

CONSOLIDATION DIAGRAM

PIN36/Surpac/Pin36-Consol
BUTTON & O'CONNOR INC: Westville

COMPONENTS:

- 1) The figure A B C e G represents Erf 1689 Pinetown vide Diagram S.G.No.5720/1946 and Deed of Transfer No.256/1948
- 2) The figure F e C D E represents Erf 1688 Pinetown vide Diagram S.G.No.5721/1946 and Deed of Transfer No.3451/1947

SERVITUDE NOTE:

- a) The figure a G A B d b represents a Road Servitude 20,12 metres wide vide Diagram S.G.No.5720/1946 and Deed of Transfer No.6770/1945

S.G. No.

1118/2014

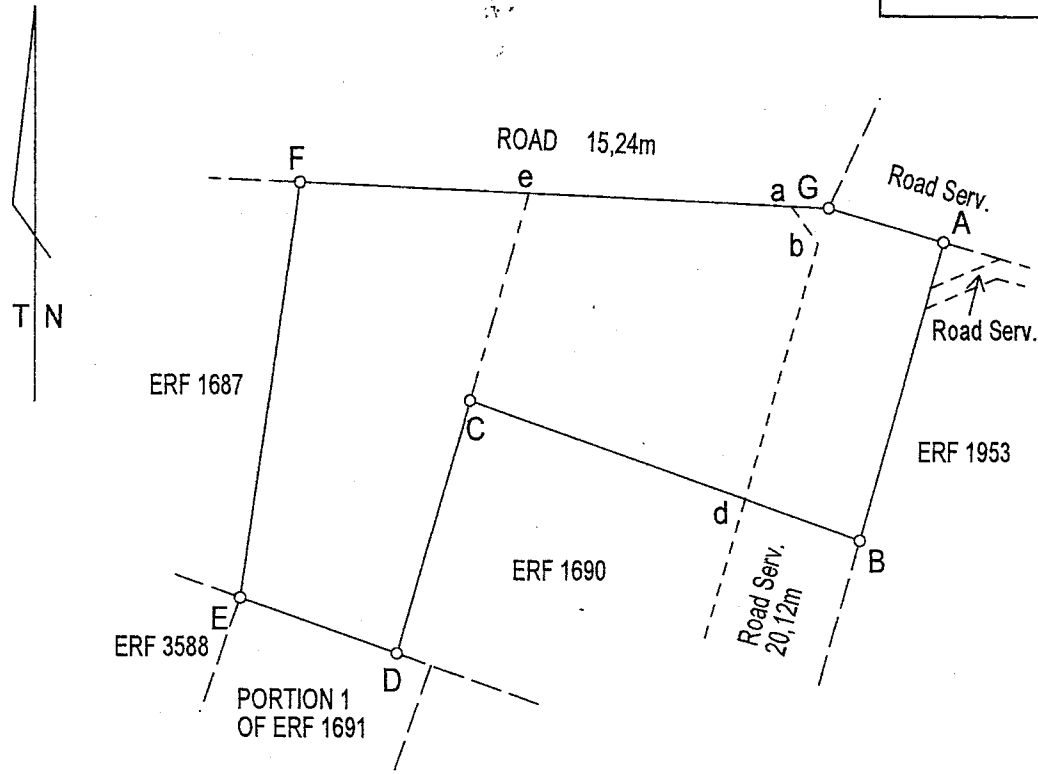
Approved



for
SURVEYOR-
GENERAL

2014-11-14

Act No. 6 of 2008
Ref con009/11/2013/1w



Scale 1:1250

The figure

A B C D E F G

represents

5516 square metres

of land being

ERF 33065 PINETOWN

(and comprises the properties 1 and 2 as quoted above)

Situate in the eThekweni Municipality Inner West Operational Entity

Registration Division FT Province of KwaZulu-Natal

Compiled in August 2014 by me

W.I.M.TURNBULL
Professional Land Surveyor
Registration Number PLS 0875

This diagram is
annexed to
No.

Registrar of Deeds

File /406 VOL 4

S.R. Compiled

Comp. FT-8B-13A1

CERTIFIED A TRUE COPY
OF THE ORIGINAL

2014-11-14

[Signature]

for SURVEYOR GENERAL KZN

31(5) z
SECTION 34(2) CERTIFICATE
1

I hereby certify that the conditions of approval for the subdivision or consolidation of land as contemplated in section 26(4) of the Kwazulu-Natal Planning and Development Act, 2008 (Act No.6 of 2008) have been complied with.

[Signature]
P. Head : Development Planning, Environment and
Management - Ethekwini Municipality

Date : 26/11/2015.