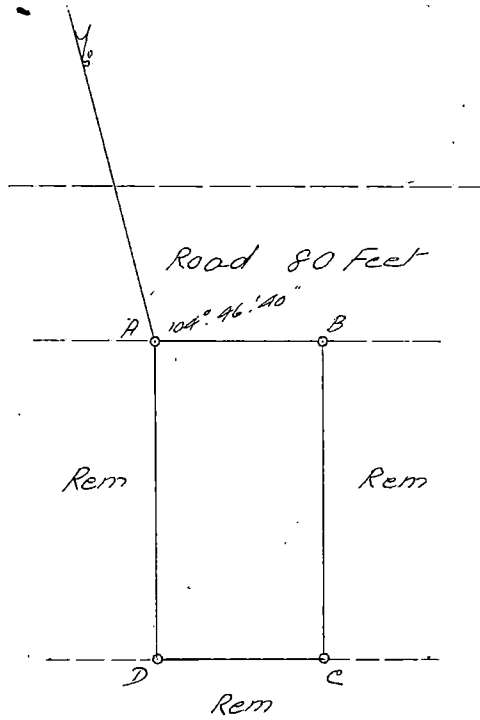


S. Hildmeyer
 Ex. of D.

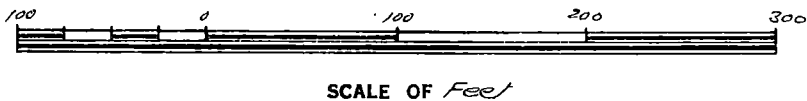
5 SEP. 1929



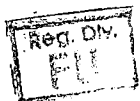
Now SUB. 10 of
 LOT 958 DURBAN NORTH

SIDES.		ANGLES.	
AB	88.08	A	90°
BC	165.	B	90
CD	88.08	C	90
DA	165.	D	90

Y	CO-ORDINATES	X



The above diagram lettered ABCD represents - Acres / Roods 13.38 Perches of land known as Lot 1A A7 of E of Lot 12 N° 1548 situated in the County of Victoria Province of Natal. Bounded as indicated above.



T. 3618/1929
 Vol. 17 Fol. 148.

Surveyed by me,
Alfred Jensen
 Government Land Surveyor.
 T.C. 722
 33053
 July 1928
 FU-7A-6A-2