

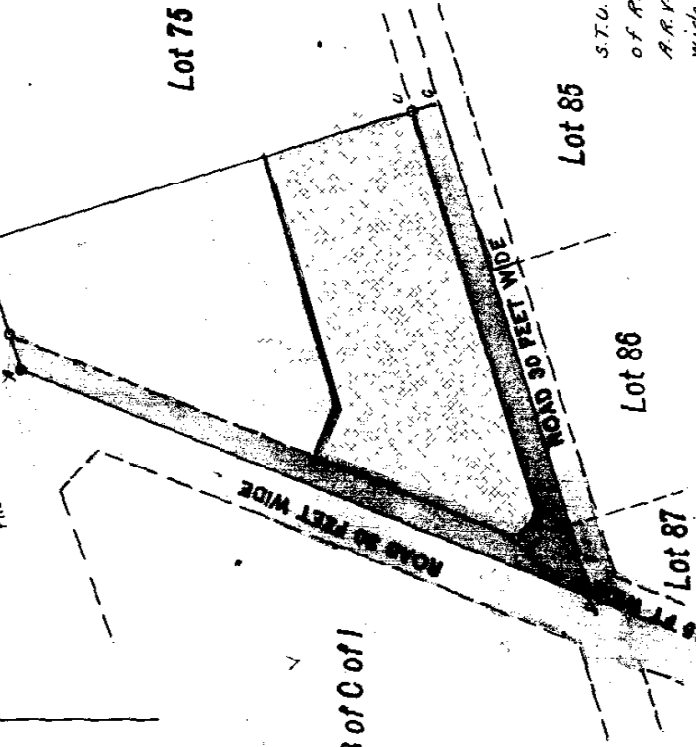
Approved

*N. Milderup-Sleming*  
Surveyor General

GENERAL PLAN No. 7141

Main Road TO DURBAN

FROM P. H. BURG



S.T.U.C.V. is servitude of half width of Road 30 ft wide and  
A.R.V.D. is servitude of Road 15 ft wide  
wide Vide D/T 994/1935

SIDES IN ENG. FEET	DIRECTION & ANGLES
AB 75.75	252° 32' 40"
BC 270.79	342° 32' 40"
CD 233.55	72° 32' 30"
DA 347.44	201° 20' 20"
AB 56.51	342° 32' 40"
BU 255.79	342° 32' 40"
UT 242.13	72° 32' 30"
TS 17.29	136° 55' 25"
SR 308.20	201° 20' 20"

Description of Beacons  
A is a 3/4" pipe in concrete  
B, C, U are 1/2" pipes  
R, S, T are 3/4" pipes  
No beacons at C, D.

CO ORDINATES Y System L. 31° X	
A	+55663.63 +16155.51
B	+55591.37 +16132.79
C	+55510.12 +16391.12
D	+55790.05 +16479.15
R	+55645.27 +16149.74
S	+55757.43 +16436.81
T	+55745.62 +16449.44
U	+55519.64 +16376.80
Constant +1080000.00	



The figure A.B.C.D.

represents 1.1475 Acres

Square Feet of Land called

Lot 74 Glenholm Township of P of the Farm Richmond No 999

situate in the County of Durban

Province of Natal

Surveyed by me in April 1984

*Robert. L. Snedden*  
Land Surveyor

REG. DM.  
FT