

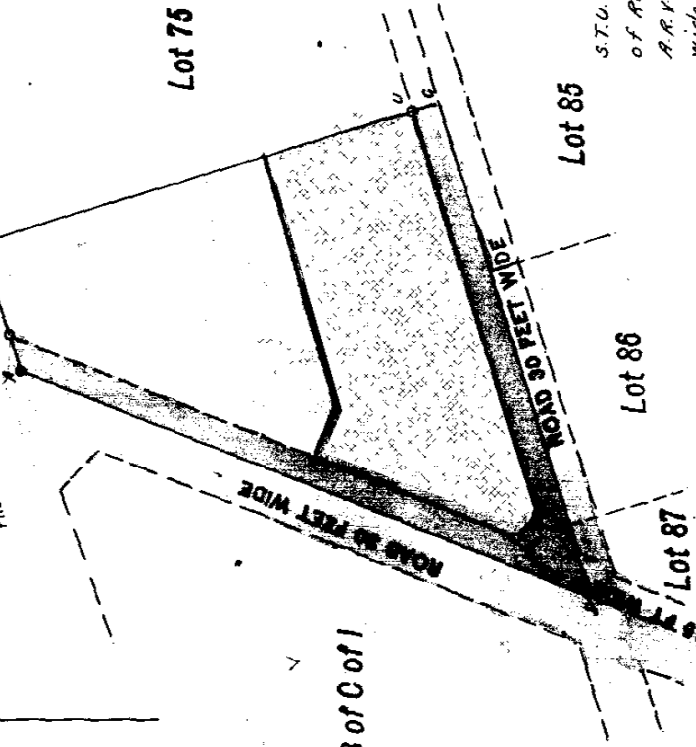
Approved

N. Middelburg
Surveyor General

GENERAL PLAN No. 71x1

Main Road TO DURBAN

FROM P. H. BURG

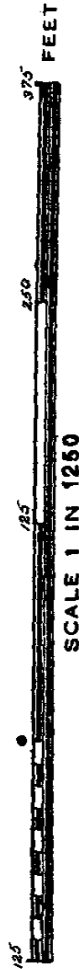


S.T.U.V. is servitude of half width of Road 30 ft wide and
A.R.V.O. is servitude of Road 15 ft wide
wide Vide DJT 974/1935

SIDES IN ENG. FEET	DIRECTION & ANGLES
AB 75.75	252° 32' 40"
BC 270.79	342° 32' 40"
CD 293.55	72° 32' 30"
DA 347.44	201° 20' 20"
AB 56.51	342° 32' 40"
BU 255.79	72° 32' 30"
UT 242.13	136° 55' 25"
TS 17.29	201° 20' 20"
SR 308.20	

Description of Beacons
A is a 3/4" pipe in concrete
B, U. are 1/2" pipes
R, S, T. are 3/4" pipes
No beacons at C, D.

CO ORDINATES Y System L. 91° X	
A	+ 55663.63 + 16155.51
B	+ 55591.37 + 16132.79
C	+ 55510.12 + 16391.12
D	+ 55790.05 + 16479.15
R	+ 55645.27 + 16149.74
S	+ 55757.43 + 16436.81
T	+ 55745.62 + 16449.44
U	+ 55519.64 + 16376.80
Constant + 1080000.00	



The figure A.B.C.D.

represents 1.1475 Acres Square Feet of Land called

Lot 74 Glenholm Township of P of the Farm Richmond No 999

situate in the County of Durban Province of Natal

Surveyed by me in April 1934

Robert. L. Snedden
Land Surveyor

