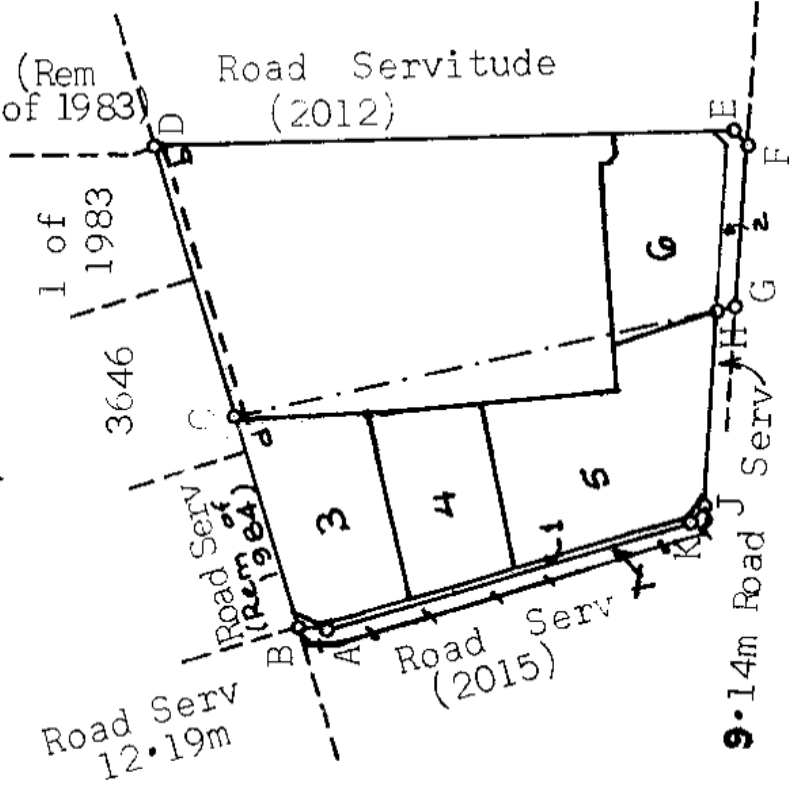


SIDES METRES	DIRECTIONS	CO-ORDINATES		S.G. No.:
		Y SYSTEM	Lo. 310 X	
AB 13.93	Constants	+ 12000.00	+3298000.00	4622/1970 Approved <i>K.A. Wink</i> Surveyor-General A. 12. 1970
BC 103.52	182 32 40	+ 840.55	251.13	
CD 133.06	253 25 20	+ 839.94	237.21	
DE 272.82	253 24 30	+ 740.72	207.67	
EF 8.59	358 15 40	+ 740.73	207.76	
FG 77.76	46 8 10	+ 613.21	169.77	
GH 9.48	94 0 50	+ 604.93	442.46	
IJ 91.29	167 31 30	+ 611.12	448.41	
JK 9.99	93 26 10	+ 688.69	442.97	
KA 178.23	128 25 20	+ 690.71	433.62	
	163 24 30	+ 781.83	428.15	
		+ 789.66	421.94	



**Beacons**

- A.G.H.J.K. 12mm pegs
- B.D.E.F. 20mm pipes
- C. 25mm pipe

SCALE 1 : 5000

BEACONS B, C, J  
REPLACED/RELOCATED  
VIDE S.R. NO.  
12/11/1987

The figure A B C D E F G H J K

represents

4.9118 Hectares

of land being

LOT 4599 PINETOWN TOWNSHIP

and comprises:-

1. The figure ABCHJK representing Lot 1995 Pinetown Township vide diagram S.G. No. 1812/60 relating to D.T. No. 9296/1960
2. The figure CDEFG representing Lot 1996 Pinetown Township vide diagram S.G. No. 377/53 relating to D.T. No. 3459/1953

situate in the Borough of Pinetown County of Durban Province of Natal

Compiled

Surveyed in October, 1970,

by me

*S.A. de Wet*  
Land Surveyor

This diagram is annexed to CCT

File No. / 263

No. 8116/1971

No. quoted above.

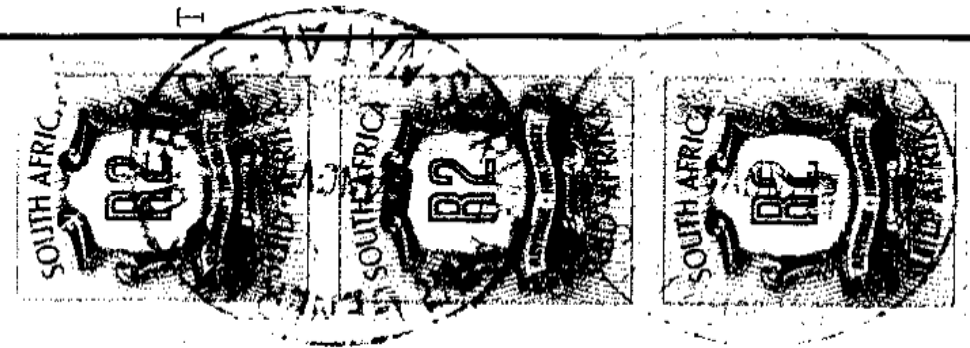
S.R. No.

Transfer

Comp. FT 8B 13 A2 & 13 A4

Registrar of Deeds

Degree Sheet 59



REG. DIV.  
FT