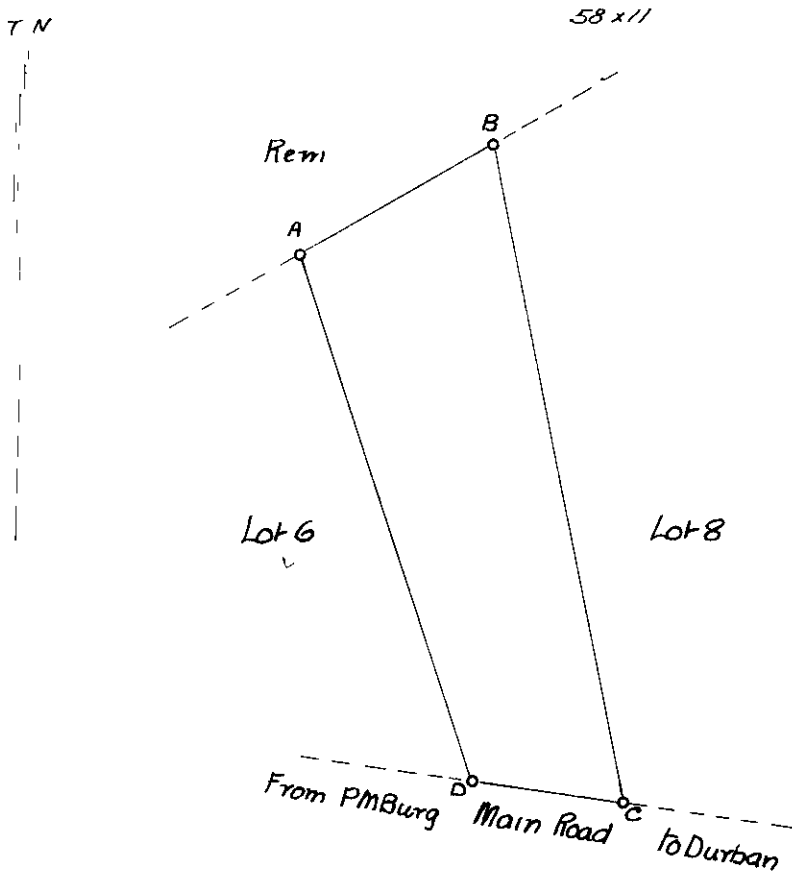


Approved

*[Signature]*  
Surveyor General



1281

Westville

DIRECTION	Co-ordinates.	
	Y	X

Description of Beacons

ABCD  
All beacons are 3/4" iron pipes

Sides ENGLISH FEET		Angles	
AB	72 16	A	101° 32' 40"
BC	218 83	B	71 43 20
CD	50 00	C	71 1 40
DA	181 19	D	115 42 20

Reg. Div.  
FT



The figure ABCD represents 11579 Square Feet of land called Lot 7 of A of Lot 47 of the farm Wandsbeck No 835

• situate in the County of Durban

Province of Natal

Surveyed in October 1933, by me

*N. Hanifan*  
Land Surveyor

S	This diagram is annexed to Deed of No dated	Original diagram is annexed to Deed of Transfer No 648 dated 29/5/1899 Sub Vol. 153 Fol. 77	File No 42/37
	Registrar of Deeds		Survey Records 4064
			Tracing
			Degree Sheet

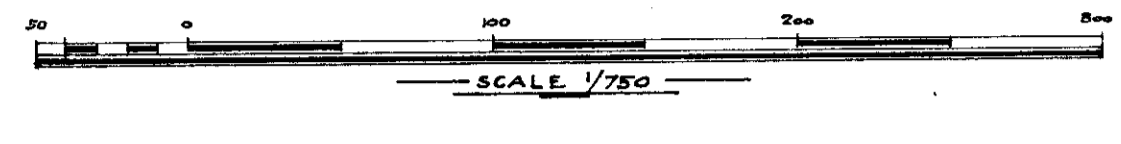
8062/23

*N. Hamilton*  
 Surveyor General.  
 2/9/1936.

# GENERAL PLAN

Reg. Div.  
 FT

1275-1287 situate on erf 1274 Westville Vide Diagram SG No. SV153F77  
 Lots 1-11 and 17 of Lot A of Lot 47 of the farm WANDSBECK No 835  
 1264-1271 situate on erf 1272 Westville Vide Diagram SG No. SV165F77  
 Lots 12-15 and 18-21 of Lot B of Lot 47 of WANDSBECK No 835  
 County of Durban Province of Natal.

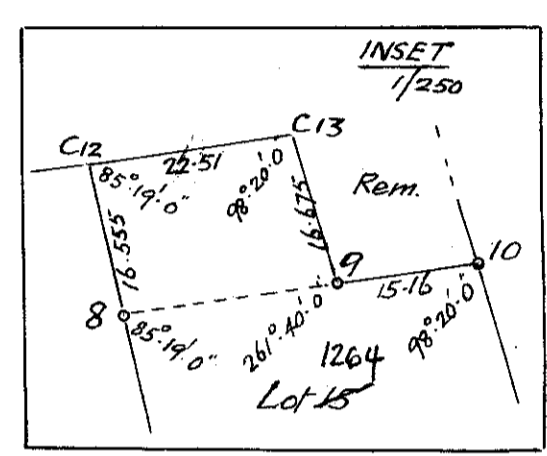
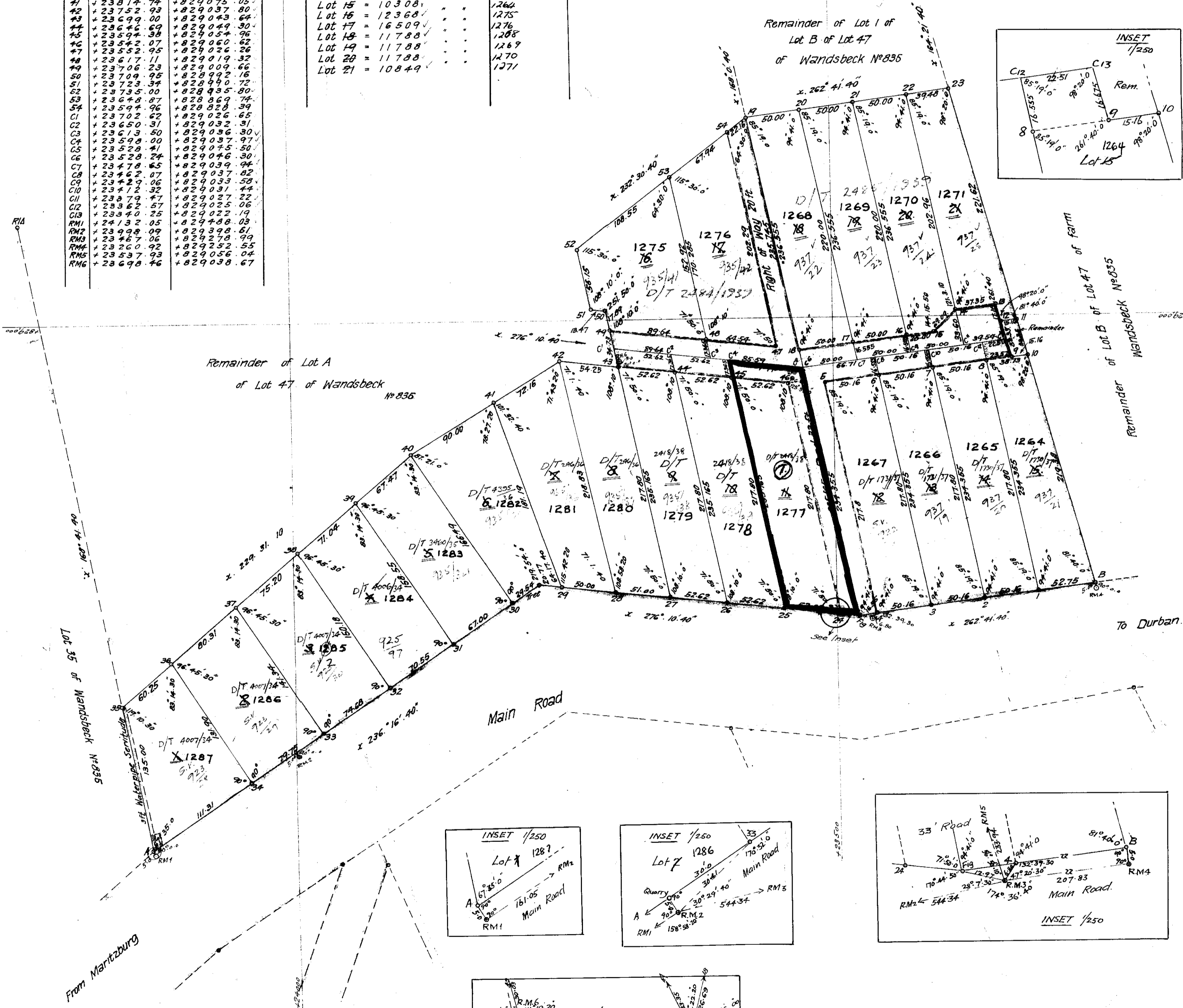


Co-ordinates System		
L <sup>o</sup> 31 <sup>o</sup>		
Y	X	const + 10,000,000
A	24137.83	+029483.87
B	23779.56	+029275.54
C	23261.56	+029247.59
D	22947.81	+029208.71
E	22913.08	+029254.30
F	22963.49	+029250.68
G	22963.13	+029273.44
H	22960.36	+029260.39
I	22958.63	+029054.01
J	22948.88	+029097.63
K	22938.13	+029041.25
L	22935.75	+029038.25
M	22920.70	+029036.39
N	22929.69	+029006.21
O	22944.73	+029006.14
P	22944.36	+029009.65
Q	22946.41	+029004.35
R	22907.67	+029014.30
S	22932.47	+029017.38
T	22902.23	+029023.74
U	22931.65	+029030.10
V	22927.31	+029016.20
W	22927.79	+029008.54
X	22949.20	+029002.18
Y	22947.95	+029017.22
Z	22939.49	+029019.80
1	22946.84	+029273.67
2	22949.29	+029251.50
3	22961.46	+029262.55
4	22963.77	+029256.64
5	22970.48	+029259.97
6	22975.18	+029255.02
7	22979.40	+029259.97
8	22982.38	+029267.77
9	22973.81	+029336.34
10	22975.97	+029377.00
11	22982.32	+029377.00
12	22982.32	+029377.00
13	22982.32	+029377.00
14	22982.32	+029377.00
15	22982.32	+029377.00
16	22982.32	+029377.00
17	22982.32	+029377.00
18	22982.32	+029377.00
19	22982.32	+029377.00
20	22982.32	+029377.00
21	22982.32	+029377.00
22	22982.32	+029377.00
23	22982.32	+029377.00
24	22982.32	+029377.00
25	22982.32	+029377.00
26	22982.32	+029377.00
27	22982.32	+029377.00
28	22982.32	+029377.00
29	22982.32	+029377.00
30	22982.32	+029377.00
31	22982.32	+029377.00
32	22982.32	+029377.00
33	22982.32	+029377.00
34	22982.32	+029377.00
35	22982.32	+029377.00
36	22982.32	+029377.00
37	22982.32	+029377.00
38	22982.32	+029377.00
39	22982.32	+029377.00
40	22982.32	+029377.00
41	22982.32	+029377.00
42	22982.32	+029377.00
43	22982.32	+029377.00
44	22982.32	+029377.00
45	22982.32	+029377.00
46	22982.32	+029377.00
47	22982.32	+029377.00
48	22982.32	+029377.00
49	22982.32	+029377.00
50	22982.32	+029377.00
51	22982.32	+029377.00
52	22982.32	+029377.00
53	22982.32	+029377.00
54	22982.32	+029377.00
55	22982.32	+029377.00
56	22982.32	+029377.00
57	22982.32	+029377.00
58	22982.32	+029377.00
59	22982.32	+029377.00
60	22982.32	+029377.00
61	22982.32	+029377.00
62	22982.32	+029377.00
63	22982.32	+029377.00
64	22982.32	+029377.00
65	22982.32	+029377.00
66	22982.32	+029377.00
67	22982.32	+029377.00
68	22982.32	+029377.00
69	22982.32	+029377.00
70	22982.32	+029377.00
71	22982.32	+029377.00
72	22982.32	+029377.00
73	22982.32	+029377.00
74	22982.32	+029377.00
75	22982.32	+029377.00
76	22982.32	+029377.00
77	22982.32	+029377.00
78	22982.32	+029377.00
79	22982.32	+029377.00
80	22982.32	+029377.00
81	22982.32	+029377.00
82	22982.32	+029377.00
83	22982.32	+029377.00
84	22982.32	+029377.00
85	22982.32	+029377.00
86	22982.32	+029377.00
87	22982.32	+029377.00
88	22982.32	+029377.00
89	22982.32	+029377.00
90	22982.32	+029377.00
91	22982.32	+029377.00
92	22982.32	+029377.00
93	22982.32	+029377.00
94	22982.32	+029377.00
95	22982.32	+029377.00
96	22982.32	+029377.00
97	22982.32	+029377.00
98	22982.32	+029377.00
99	22982.32	+029377.00
100	22982.32	+029377.00

Areas		
Lot 1	= 108924	Sq. Ft. 1287
Lot 2	= 108951	1286
Lot 3	= 108951	1285
Lot 4	= 108911	1284
Lot 5	= 108894	1283
Lot 6	= 115777	1282
Lot 7	= 115791	1281
Lot 8	= 108911	1280
Lot 9	= 117581	1279
Lot 10	= 117581	1278
Lot 11	= 158397	1277
Lot 12	= 158321	1276
Lot 13	= 117151	1267
Lot 14	= 117151	1266
Lot 15	= 103081	1265
Lot 16	= 123681	1275
Lot 17	= 165097	1276
Lot 18	= 117881	1269
Lot 19	= 117881	1270
Lot 20	= 117881	1271
Lot 21	= 108441	1271

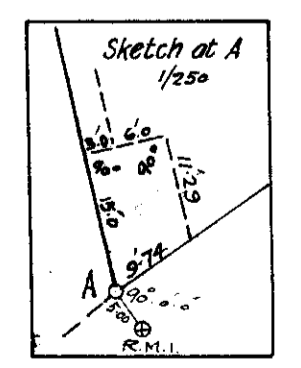
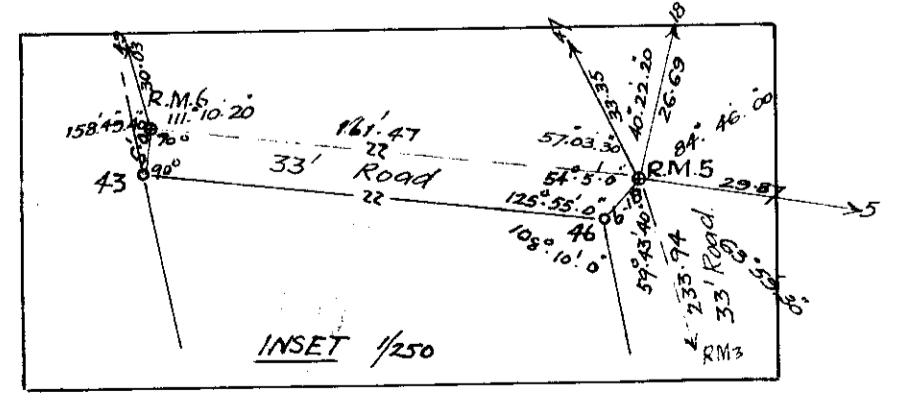
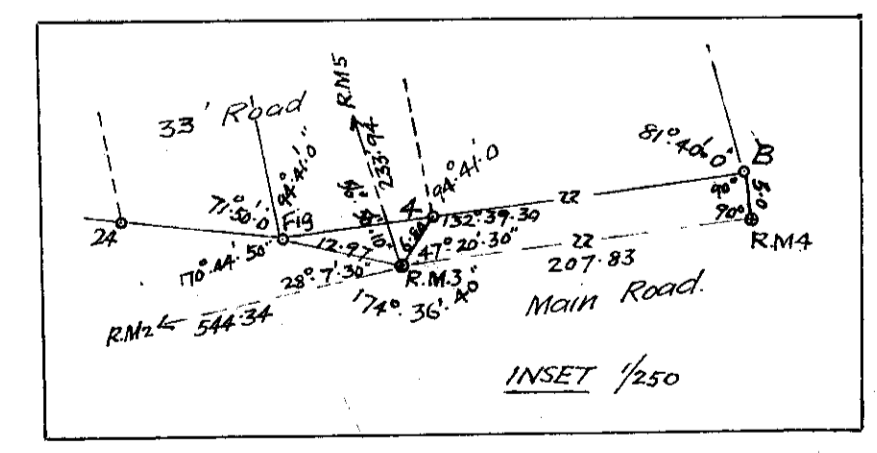
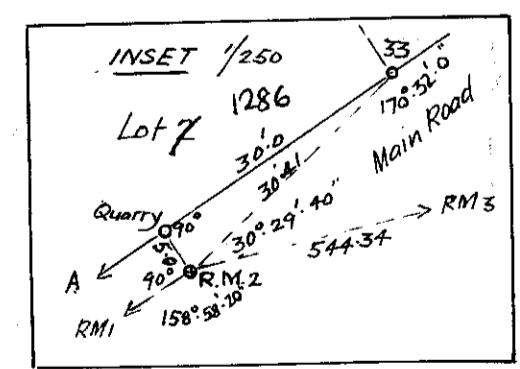
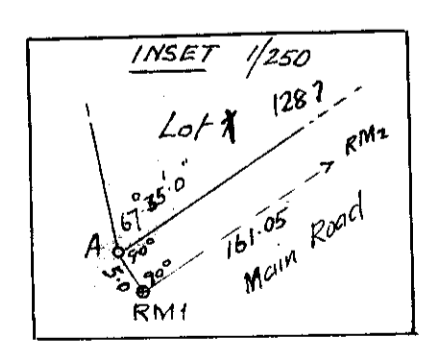
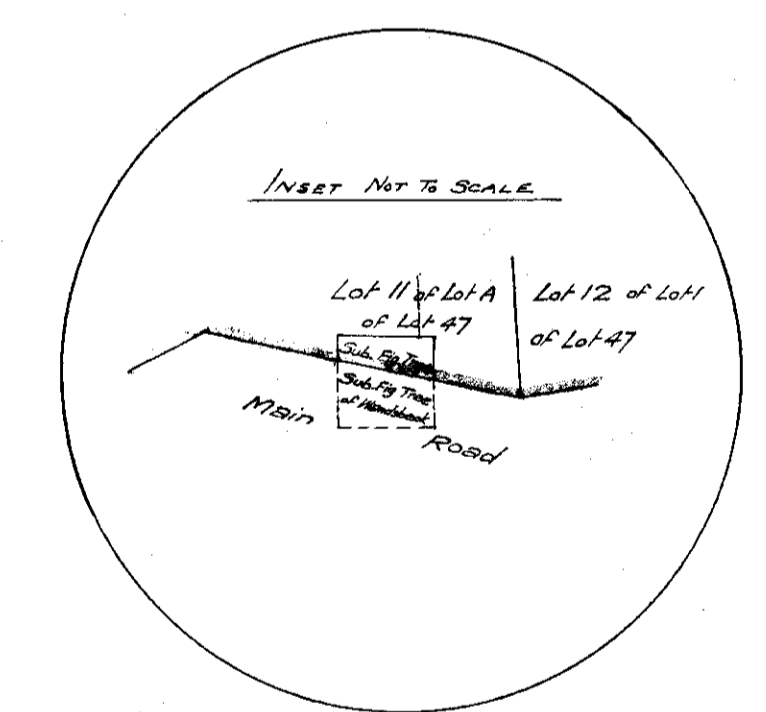
**Description of Beacons**  
 R1A is large pile of stones  
 A is a 3/4" pipe within a ring  
 of embedded stones  
 B, 1, 2, 3, 4, 5, 6, 7, 8, 9, 10, 11,  
 12, 13, 14, 15, 16, 17, 18, 19, 20,  
 21, 22, 23, 24, 25, 26, 27,  
 28, 29, 30, 31, 32, 33, 34,  
 35, 36, 37, 38, 39, 40, 41, 42,  
 43, 44, 45, 46, 47, 48, 49, 50,  
 51, 52, 53 and 54 are 3/4" pipes.  
 RM, RMs, RMs, RMs, RMs, RMs,  
 are 3/4" pipes in concrete.

The beacons of each erf represented on  
 this plan are in accordance with regulation  
 and have been placed under my supervision  
 surveyed in October 1933 by me  
 N. Hamilton  
 Land Surveyor.



RENUMBERING OF WESTVILLE

Old No	New Designation
Lot 1	1287 22
" 2	1286 21
" 3	1285 20
" 4	1284 19
" 5	1283 18
" 6	1282 17
" 7	1281 16
" 8	1280 15
" 9	1279 14
" 10	1278 13
" 11	1277 12
" 12	1276 11
" 13	1269 3
" 14	1265 2
" 15	1264 1
" 16	1275 10
" 17	1276 11
" 18	1268 5
" 19	1269 6
" 20	1270 7
" 21	1271 8
Rem.	1272 9



FOR DEDUCTIONS SEE REGISTER NO 31, FOLIO 9.

Lot A of 47 of Wandsbeck Original diagram is annexed to Deed of Transfer No 648 Dated 29 <sup>th</sup> May 1893. Sub Vol 153, Fol 77.	Lot B of 47 of Wandsbeck Original diagram is annexed to Deed of Transfer No 343. Dated 11 <sup>th</sup> May 1900. Sub Vol 165, Fol 7.	File 92/37 & 92/39 Survey Records No 406 & Tracing Deed Sheet Plan P F. B, 18, B1
---	---	--

7364  
 2200/183  
 7071