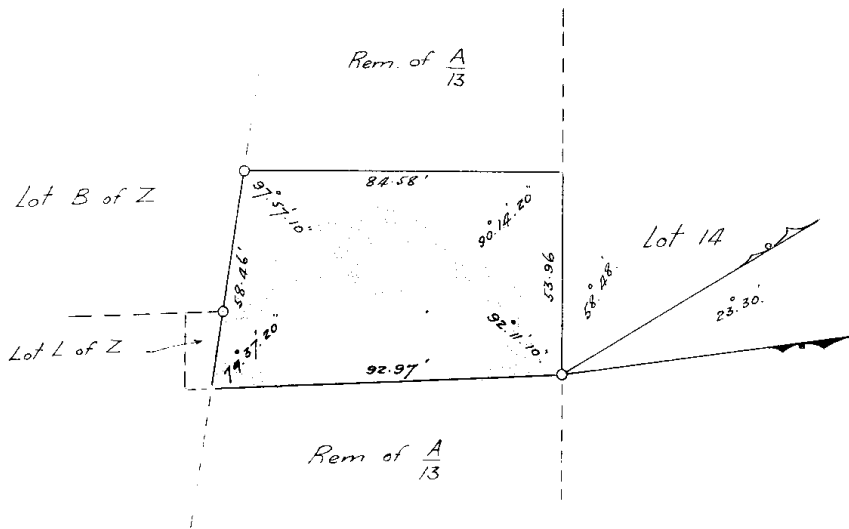
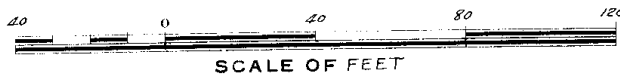


31/7/14
 J.E.D.

S V 384 F 51



Now Lot L of A Block A
 of the Town Lands of Durban No. 1737.



13 Lot 125

Now SUB 13 of
 LOT 125 DURBAN

The above diagram represents the figure and extent of

- Acres - Roads 18.20 Perches of land being

Lot L of Lot $\frac{A}{13}$ Block A situate on the

Town Lands of the Borough of Durban, ^{Province} Colony of Natal.

Bounded:- N. by Lot 14

E. by Rem of $\frac{A}{13}$

S by Lots L and B of Z

W by Rem of $\frac{A}{13}$

Surveyed by me:

W. Elton Galliers. 21134

Government Surveyor.

548

July. 1914.