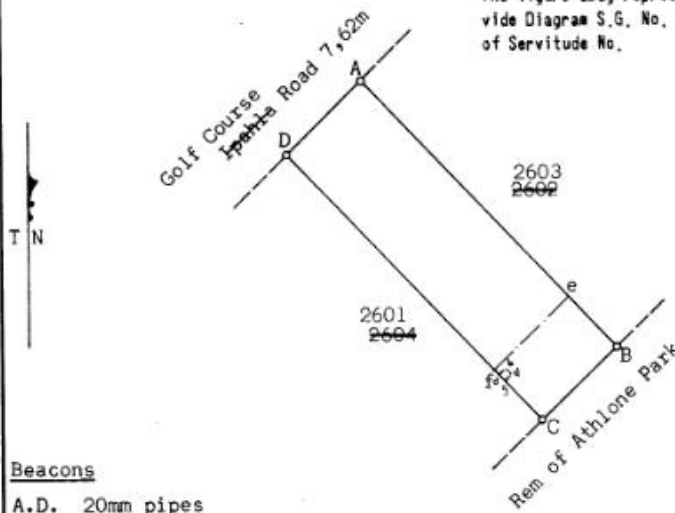


S. F. de Wet, Kenmuir & Partners,  
Land Surveyors.

CONSOLIDATED DIAGRAM

SIDES METRES		DIRECTIONS ANGLES		CO-ORDINATES SYSTEM Approx. Lo 31°		S.G. No.:
AB	81,90	A	89 06 20	Constant	+3 300 000,00	3070/1975 Approved <i>S. Holmday</i> Surveyor-General 7-12-1976
BC	22,86	B	90 23 00	B	+ 8 714,62 + 23 185,83	
CD	81,69	C	89 37 00	C	+ 8 731,01 + 23 201,77	
DA	22,86	D	90 53 40			

The figure abcd represents a Sever Servitude  
vide Diagram S.G. No. 3300/1977 and Deed  
of Servitude No.



Beacons

- A.D. 20mm pipes
- B.C. 15mm pegs

Scale 1:1250

The figure A B C D  
represents 1869 Square Metres of land being

LOT ~~2600~~ AMANZIMTOTI TOWNSHIP  
2602

and comprises:

1. The figure AefD representing Lot 740 Amanzimtoti Township, (Extension No. 1), vide diagram S.G. No. 2247/43 relating to Deed of Transfer No. 5021/1946.
2. The figure eBCf representing, <sup>Sub 19 of 2554</sup> Lot ~~2550~~ Amanzimtoti Township (Extension No. 1), vide diagram S.G. No. 3051/1975 relating to

situate in the Borough of Amanzimtoti County of Durban Province of Natal

Surveyed in Compiled in July 1975,

by me

*S. Holmday*  
Land Surveyor

This diagram is annexed to

CCT No 15486/1986

Registrar of Deeds

The Original Diagrams are as

No. quoted above

Transfer

No.

File No.

/ 88

S.R. No.

Comp. ET. 28. 9 C  
9 A.

Degree Sheet 63