

Erf 173650 Cape Town

S.G. No.
5601/2008

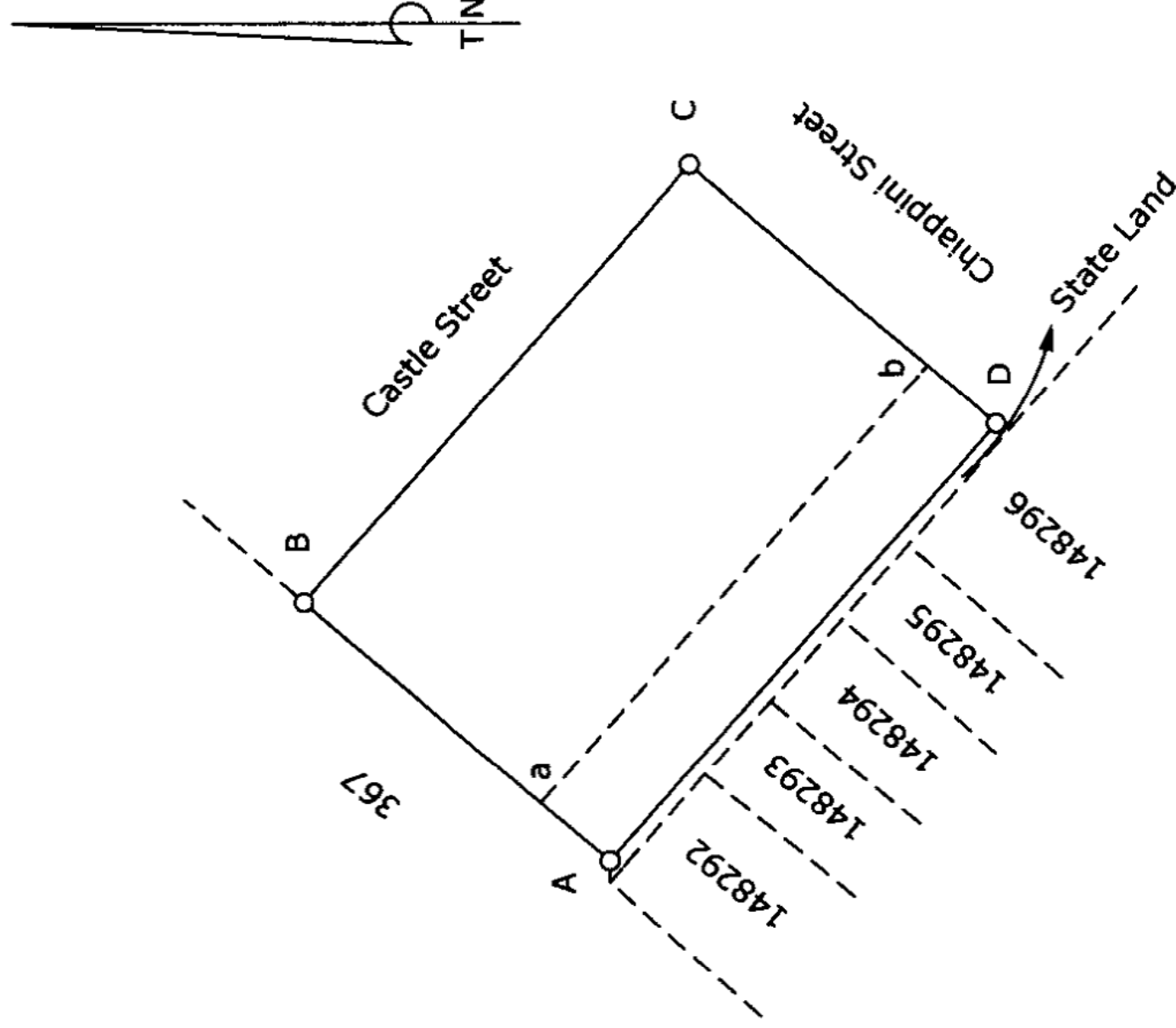
Components:

1. The figure A a b D represents Erf 933 Cape Town vide Dgm No. 5303/1937 annexed to D/T 1937- -11935
2. The figure a B C b represents remainder Erf 934 Cape Town vide Dgm No. 989/1857 annexed to D/T 1857-52-213

Approved

R. C. Abrahamse

for Surveyor-General
27 OCT 2008



Scale 1: 500

The figure A B C D
represents

705 Square metres

of land, being

Erf 173650 Cape Town comprising 1 - 2 above

Situate at Cape Town in the City of Cape Town
Administrative District of Cape
Compiled in October 2008

Province of the Western Cape

by me

R. C. Abrahamse

R. C. Abrahamse (PLS0002) Professional Land Surveyor

This diagram is annexed to
No.
dated
i.f.o.

The original diagrams are
as quoted above

File No. S/9390/295
S.R. No. Compiled
Comp. BHSX-11811(M1593)
LPI C0160007

Registrar of Deeds