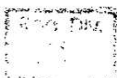
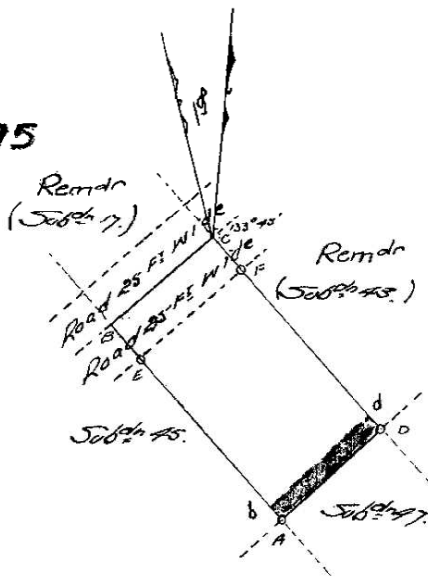


J. Hildner
 Ex. of D.

15 JUN 1931

W. P. = SV 536/95

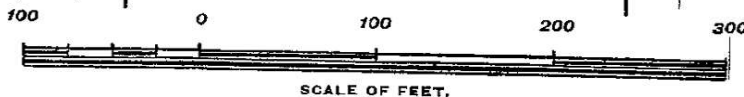


S

SIDES.		ANGLES.		
AB	145.00'	A	90°	0' 0"
BC	75.00'	B	90°	0' 0"
CD	145.00'	C	90°	0' 0"
DA	75.00'	D	90°	0' 0"
P.E.	120.00'			
D.F.	120.00'			

THIS diagram is annexed to the
 Transfer of ... 4024/1931
 dated 17 November 1931
 (Sgd) L. R. ...

Y	CO-ORDINATES.	X



The above Diagram lettered A B C D

Now SUB 44 of
 LOT 246 BLUFF

represents 0 Acres 0 Roods 5999 Perches of land known as
 Subdivision 44 of Lot 14, No. 209, (Bluff),
 situated in the County of Durban, Province of Natal. Bounded as
 indicated above.

Surveyed by me, *Ernest A. Stott*
 Government Land Surveyor,

G.V. 55/57

1383/1 November, 1922.
 527