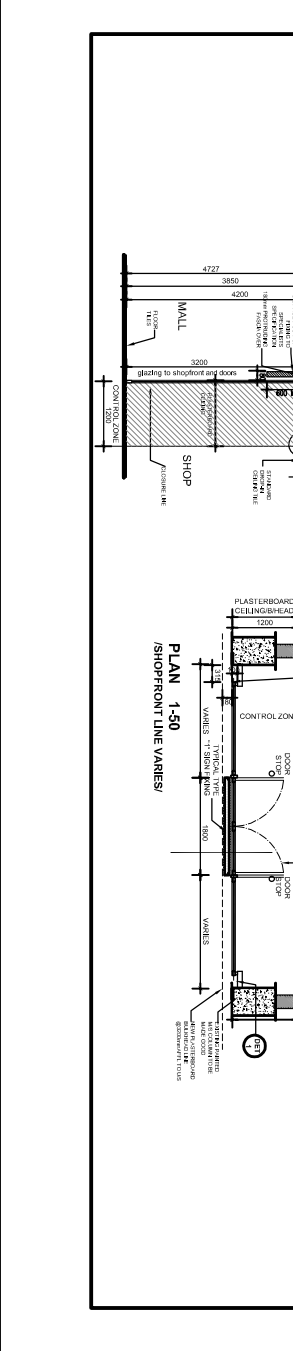
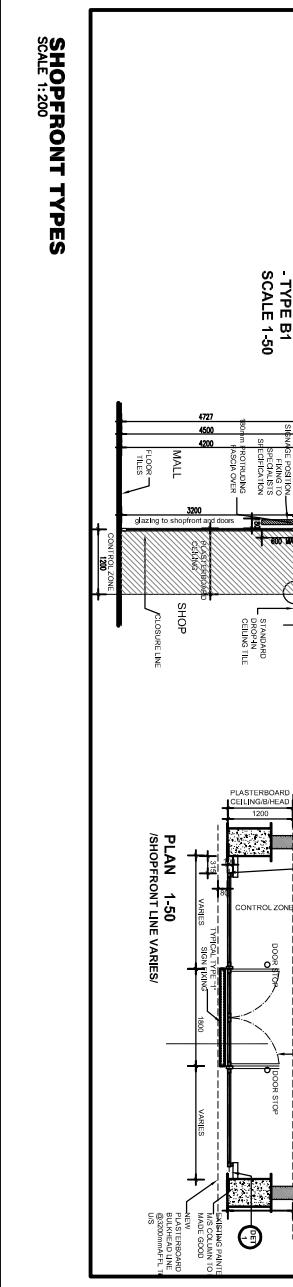
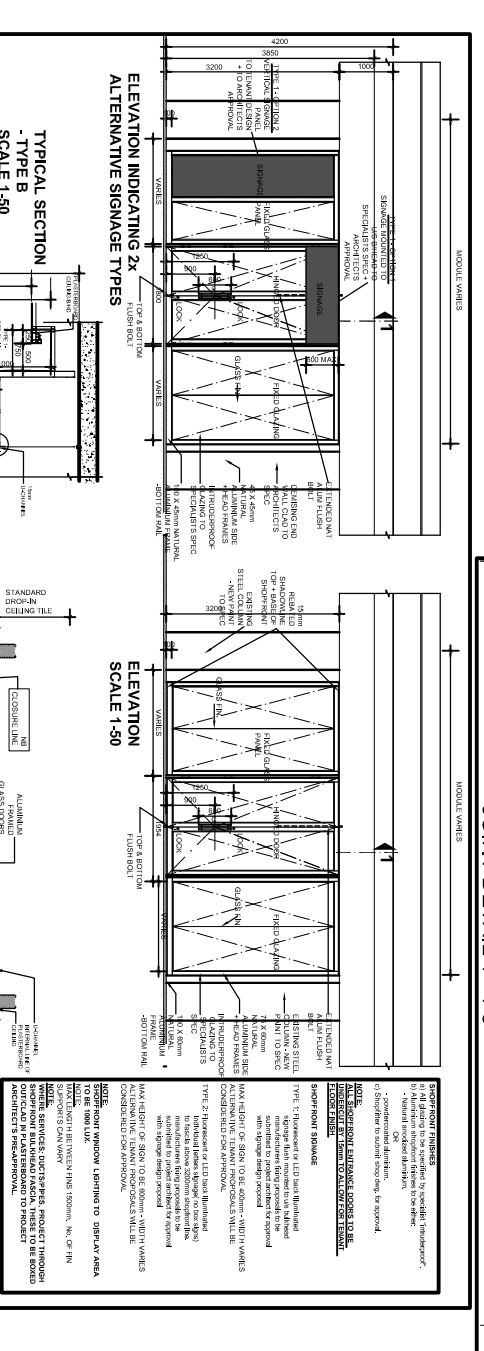
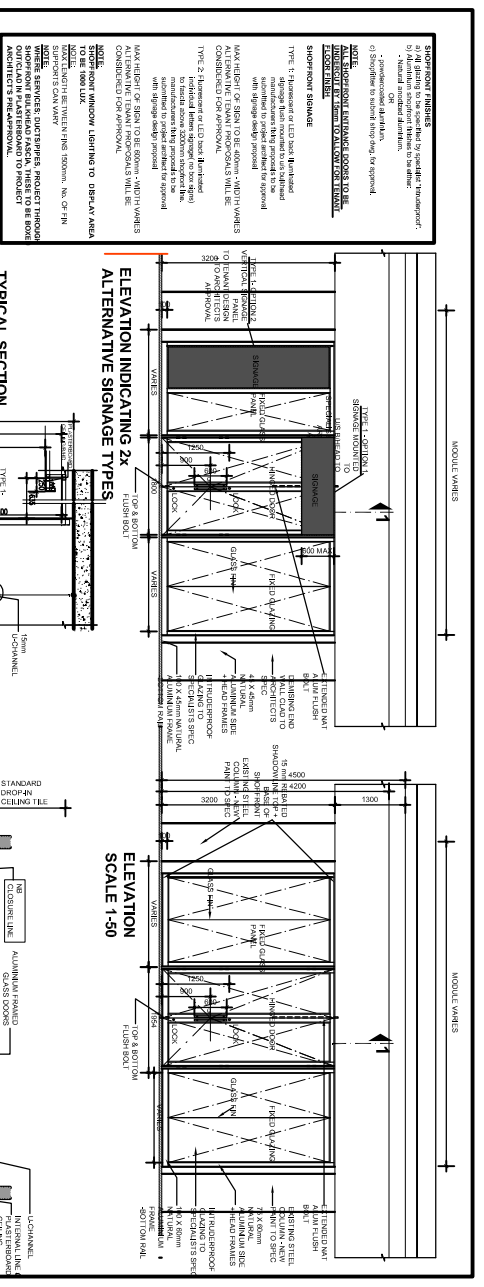
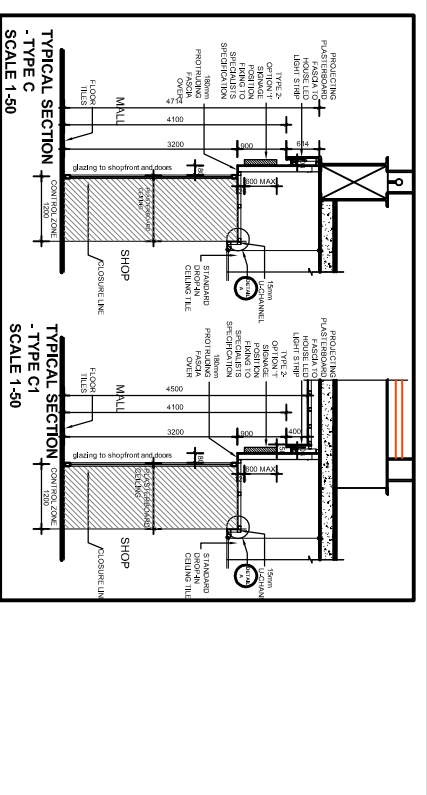
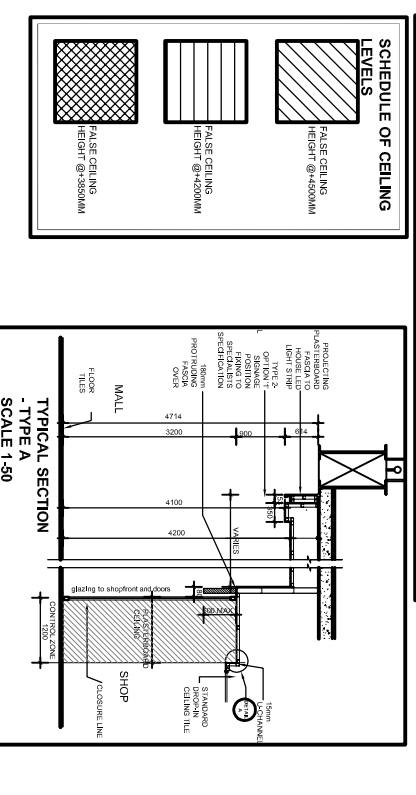
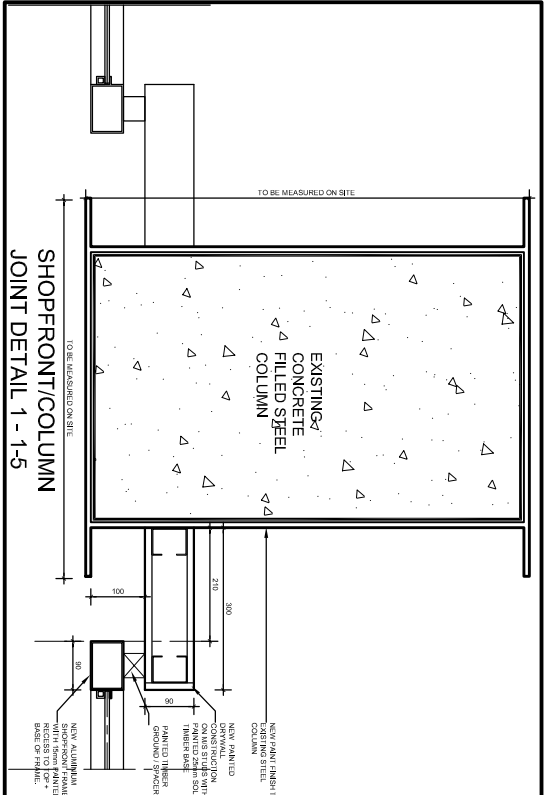
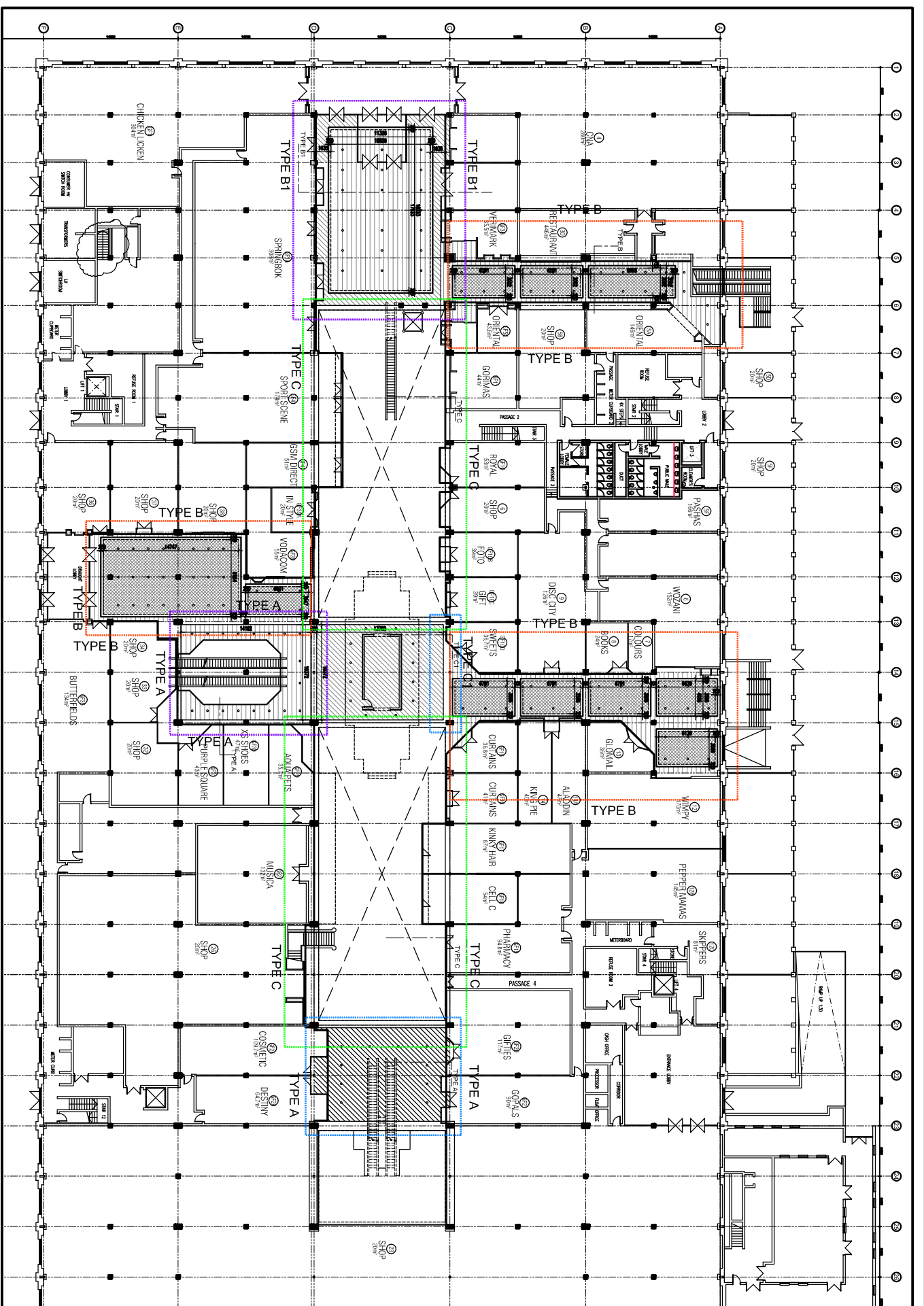


GENERAL NOTES

1. The Contractor is responsible for the correct setting out of the building and all existing structures.
2. The Contractor is to provide all necessary services for the building and to ensure that the building is completed in accordance with the approved drawings.
3. The Contractor is to ensure that the building is completed in accordance with the approved drawings.
4. The Contractor is to ensure that the building is completed in accordance with the approved drawings.
5. The Contractor is to ensure that the building is completed in accordance with the approved drawings.
6. The Contractor is to ensure that the building is completed in accordance with the approved drawings.
7. The Contractor is to ensure that the building is completed in accordance with the approved drawings.
8. The Contractor is to ensure that the building is completed in accordance with the approved drawings.

REVISIONS

| REV. | NAME | DATE       | DESCRIPTION           |
|------|------|------------|-----------------------|
| A    | SMH  | 20/11/2008 | ISSUE FOR INFORMATION |



PROJECT NO. 4609 DRAWING NO. 11.600 SECTION A

DATE: 20/11/2008

SCALE: 1:200

PROJECT TITLE: THE WORKSHOP DURBAN - NATAL

PROJECT DESCRIPTION: REFURBISHMENT OF EXISTING WORKSHOP PREMISES

DRAWING DESCRIPTION: TYPICAL SHOPFRONT SECTIONS AND PLAN LOCATION LAYOUT

DESIGNED BY: SMH

CHECKED BY: SMH

DATE: 20/11/2008

SCALE: 1:200

PROJECT NO. 4609 DRAWING NO. 11.600 SECTION A