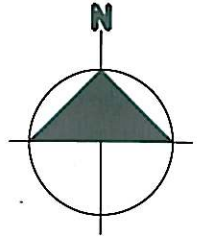


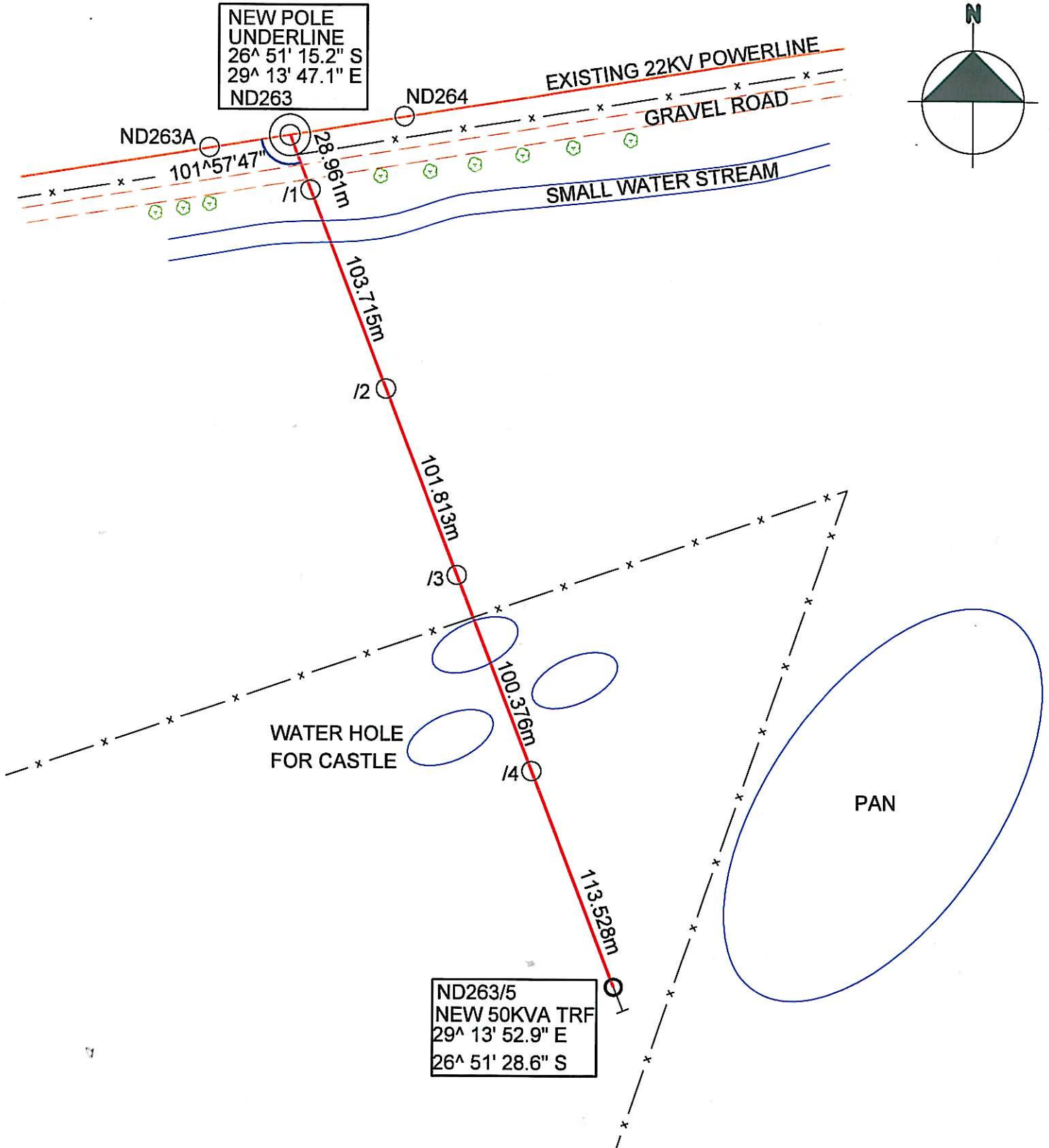
W0004

RENUMBER ND263 TO ND263A IN THE FIELD

SCALE 1:2500



NEW POLE UNDERLINE
 26° 51' 15.2" S
 29° 13' 47.1" E
 ND263



ND263/5
 NEW 50KVA TRF
 29° 13' 52.9" E
 26° 51' 28.6" S

Note: RED PEGS on site indicate structure position.

PLEASE NOTE:

No protected trees/plants may be cut/trimmed/removed unless the applicable tree permit is issued and handed to the construction contractor.

PORTION 40

VLAKFONTEIN 386 IS

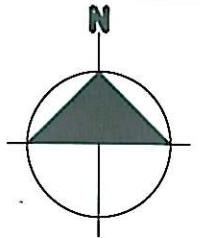
50kVA Trfr.
 Project no : BS120324401
 NAME : GERT KOCH EIEINDOMME
 Drawn by : A MABESELE
 Date : 29/07/2014
 Surveyed by : Sunny (Alex) Mahlangu
 083 656 6266

T-Off Pole no: ND263
 T-Off angle 101°57'47"
 22kV Line
 448.393m Length of Line

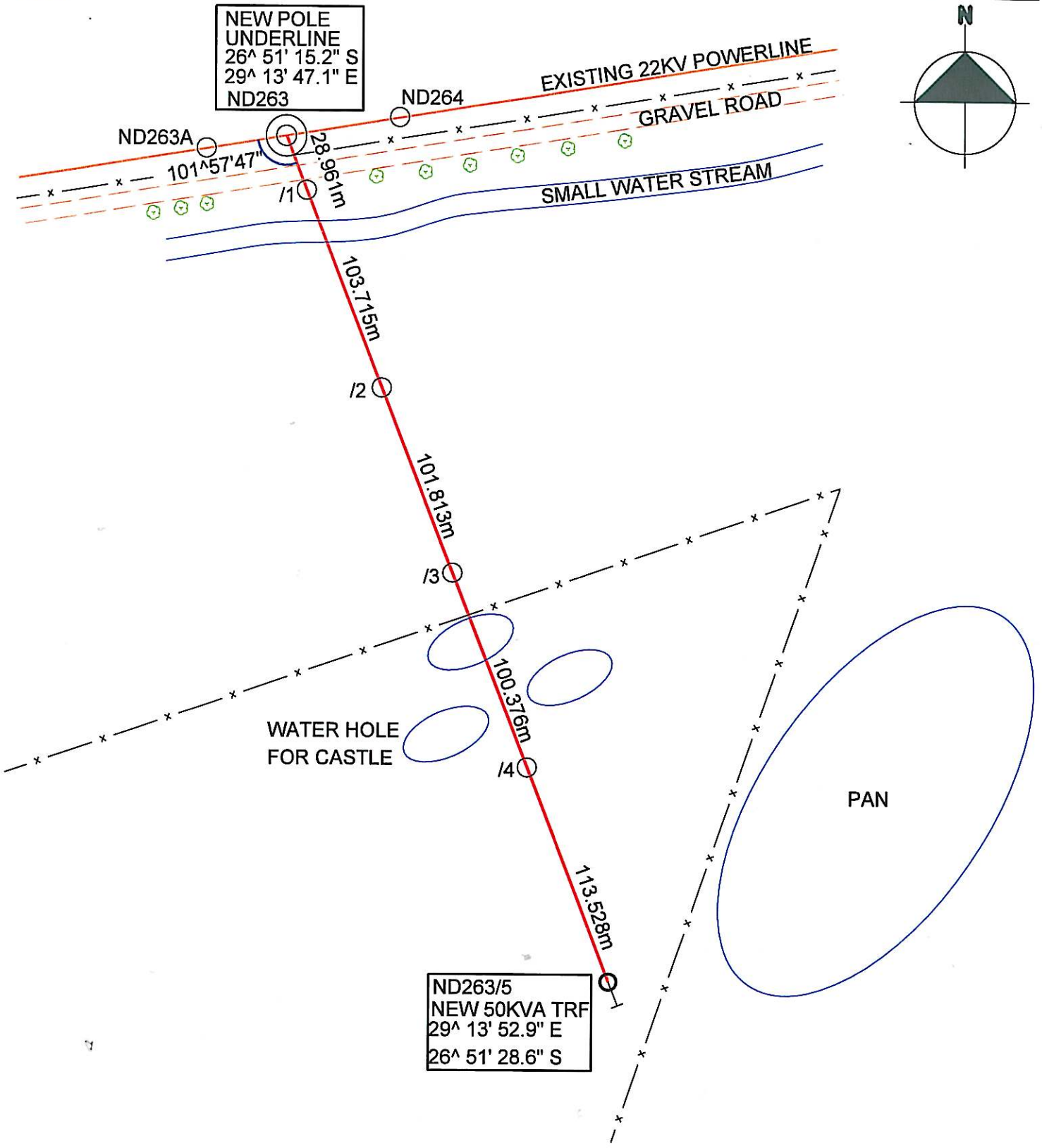
W0004

RENUMBER ND263 TO ND263A IN THE FIELD

SCALE 1:2500



NEW POLE
UNDERLINE
26° 51' 15.2" S
29° 13' 47.1" E
ND263



ND263/5
NEW 50KVA TRF
29° 13' 52.9" E
26° 51' 28.6" S

Note: RED PEGS on site indicate structure position.

PLEASE NOTE:
No protected trees/plants may be cut/trimmed/removed unless the applicable tree permit is issued and handed to the construction contractor.

PORTION 40

VLAKFONTEIN 386 IS

50kVA Trfr.
Project no : BS120324401
NAME : GERT KOCH EIEINDOMME
Drawn by : A MABESELE
Date : 29/07/2014
Surveyed by : Sunny(Alex) Mahlangu
083 656 6266

T-Off Pole no: ND263
T-Off angle 101°57'47"
22kV Line
448.393m Length of Line