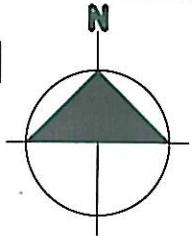


W0004

SCALE 1:2500



**NB : POLE(EXISTING) DO NOT HAVE NUMBERS AND GROUND IS UNEVEN(NOT FLAT)**

NEW 50KVA TRF  
29° 58' 51.0" E  
27° 24' 32.0" S  
ZHP2774/5

ZHP2774/4

ZHP2774/3

ZHP2774/2

ZHP2774/1

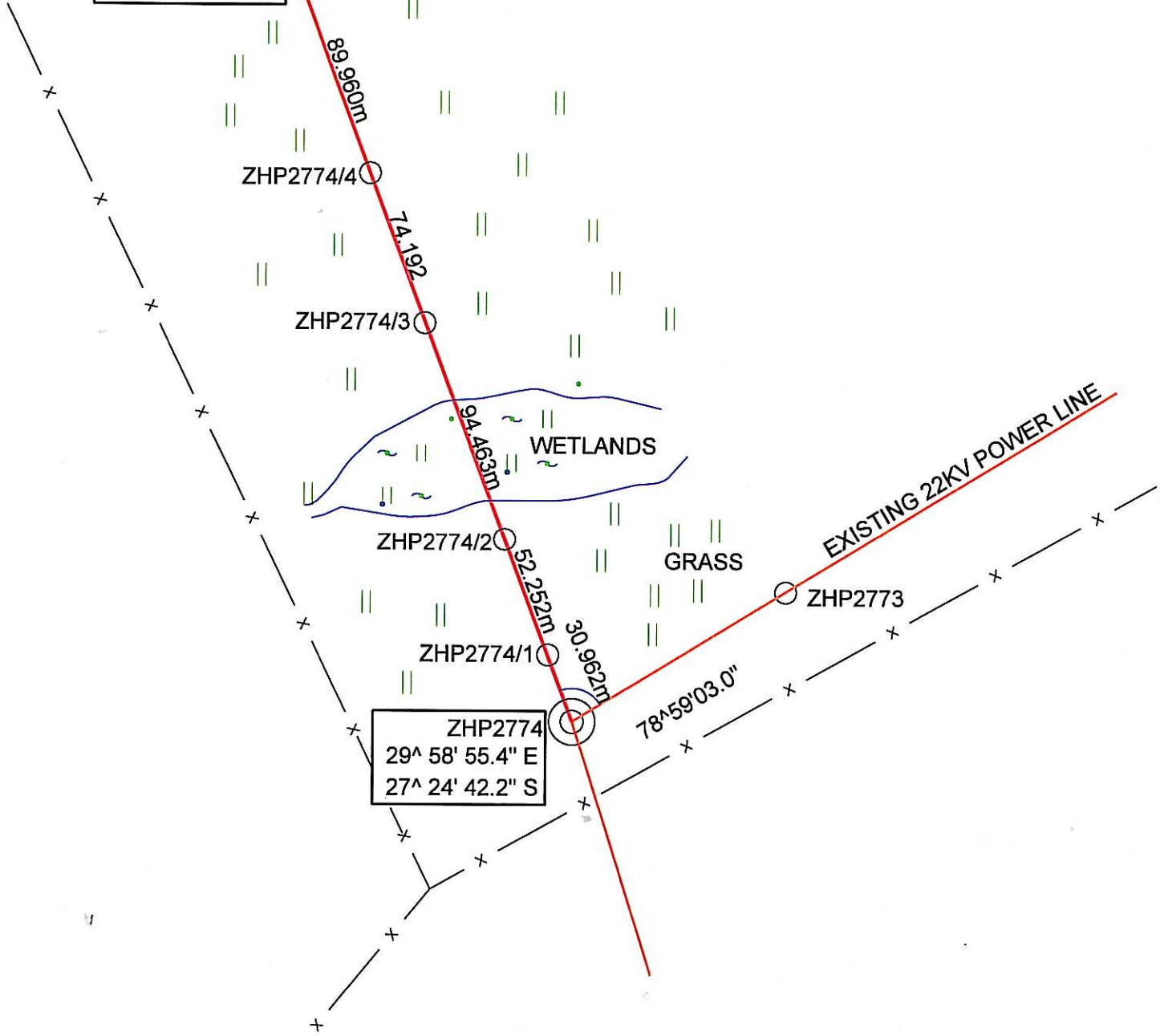
ZHP2774  
29° 58' 55.4" E  
27° 24' 42.2" S

ZHP2773

WETLANDS

GRASS

EXISTING 22KV POWER LINE



PORTION 4

VLACKDRIFT 322 HS

Note: RED PEGS on site indicate structure position.

PLEASE NOTE:  
No protected trees/plants may be cut/trimmed/removed unless the applicable tree permit is issued and handed to the construction contractor.

50kVA Trfr.  
Project no : BV120888424  
NAME : J.A LANDMAN  
Drawn by : A MABESELE  
Date : 13/08/2014  
Surveyed by: FREEDOM KHANGALE

T-Off Pole no: ZHP2774  
T-Off angle 78° 59' 03.0"  
22kV Line  
335.829m Length of Line