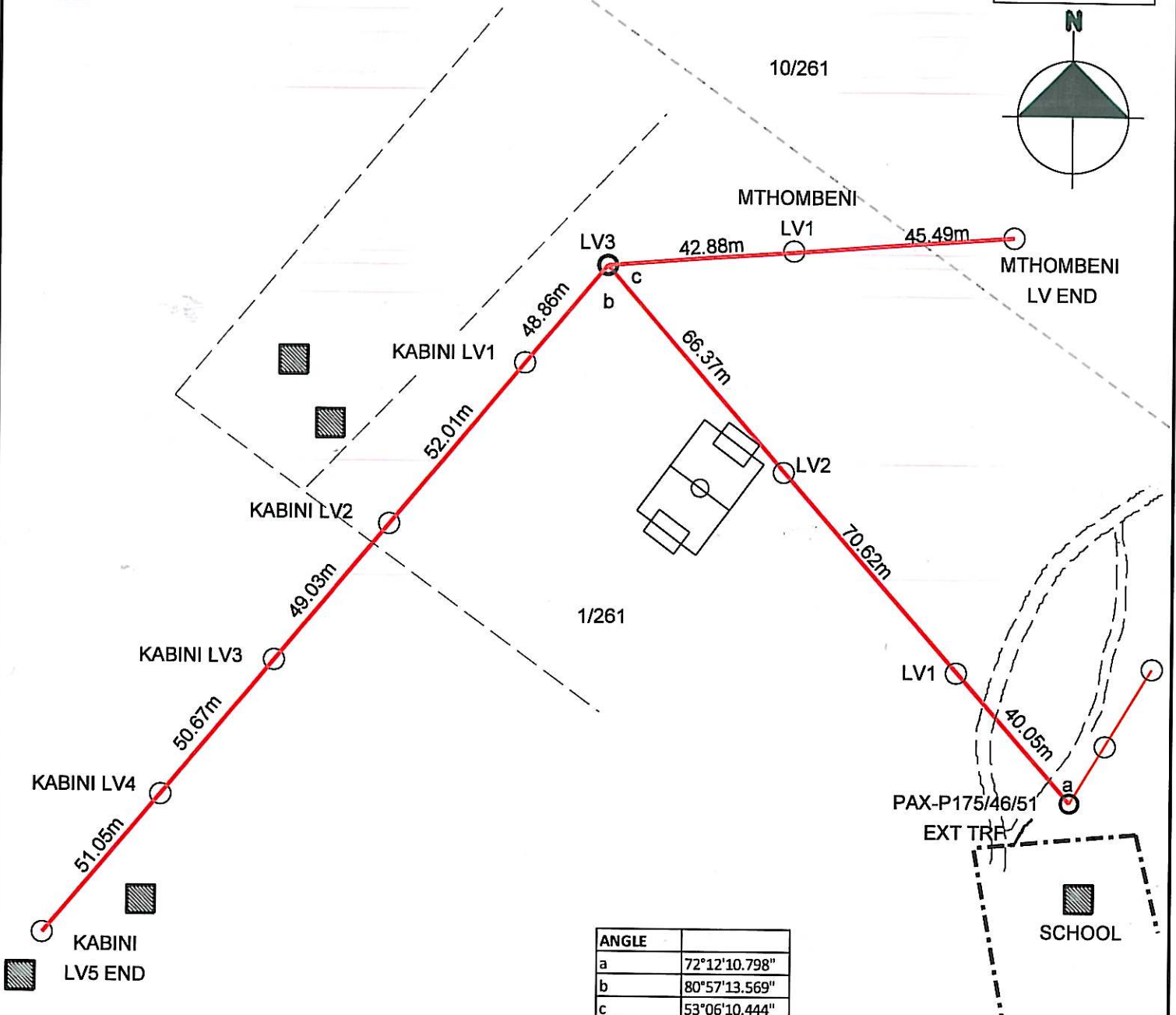
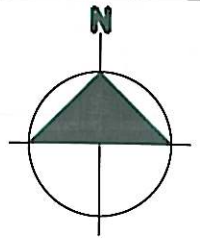




SCALE 1:1500



ANGLE	
a	72°12'10.798"
b	80°57'13.569"
c	53°06'10.444"

LABEL	X	Y	LATITUDE	LONGITUDE
PAX/P175/46/51 EXT TRFR	-20967.9	2845283	25° 42' 54.19" S	29° 12' 32.15" E
LV1	-20941.1	2845244	25° 42' 52.91" S	29° 12' 31.19" E
LV2	-20894.7	2845190	25° 42' 51.17" S	29° 12' 29.52" E
LV3	-20847	2845136	25° 42' 49.40" S	29° 12' 27.81" E
KABINI LV1	-20825	2845160	25° 42' 50.21" S	29° 12' 27.02" E
KABINI LV2	-20789	2845205	25° 42' 51.66" S	29° 12' 25.73" E
KABINI LV3	-20758.3	2845241	25° 42' 52.83" S	29° 12' 24.63" E
KABINI LV4	-20728.1	2845278	25° 42' 54.03" S	29° 12' 23.55" E
KABINI LV5	-20696.8	2845315	25° 42' 55.26" S	29° 12' 22.43" E
MTHOMBENI LV1	-20897	2845131	25° 42' 49.25" S	29° 12' 29.60" E
MTHOMBENI LV2	-20955.8	2845128	25° 42' 49.14" S	29° 12' 31.71" E

Note: RED PEGS on site indicate structure position.

PLEASE NOTE:

No protected trees/plants may be cut/trimmed/removed unless the applicable tree permit is issued and handed to the construction contractor.

PORTION 1 AND 10

KWARSSPRUIT 261 JS

LV PROJECT

Project no: WN107510988B

NAME: G MTSWENI

Drawn by: Y VENTER

Date: 14/10/2014

Surveyed by: ALEX MAHLANGU 0836566266

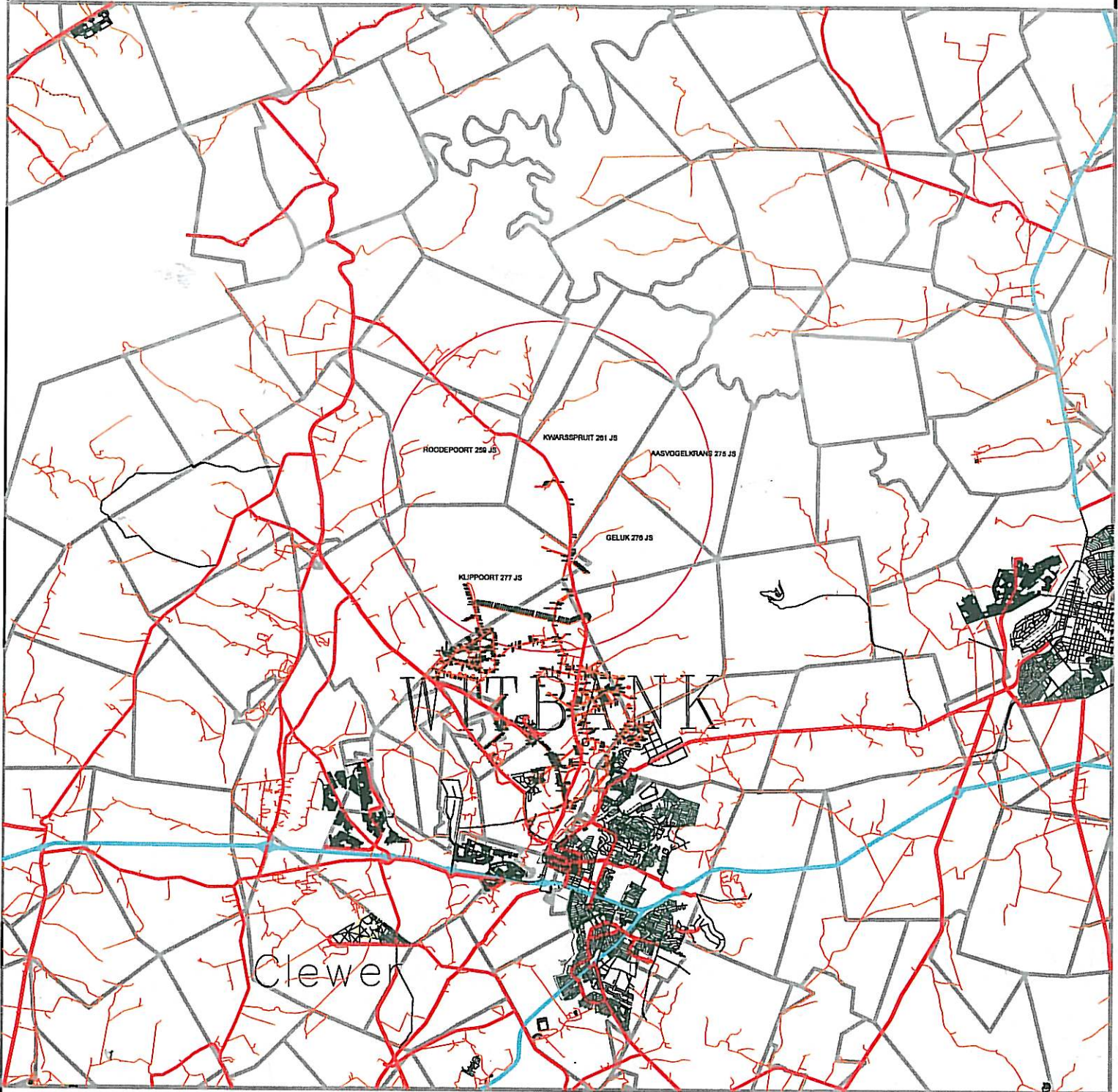
T-Off Pole no: PAX/P175/46/51

T-Off angle 73°49'49.02"

LV Line

533.293m Length of Line

LOCALITY PLAN



Disclaimer
Geographic Mapping authorities
are not responsible for any errors
in external datasets displayed on this map.



COORDINATE SYSTEM: LO84/29

SCALE 1:250 000

Information from official maps reproduced under Government printers copyright authority No. 4138 of 26/03/1969



Mpumalanga Operating Unit
Land Development

P.O.Box 223
eMalaheni 1035
Tel 013 - 693 3121
Fax 013 - 693 3261

Feeder:	PAXTON PAXTON RURAL 22 KV	Surveyor:	
Customer:	G MTSWENI	Geographic mapping:	Y VENTER
Project No:	WN107510988B	Date compiled:	11/09/2014
Portion of map no:	2529 CA S	T-OFF POLE COORD:	25°42'54.021" S 29°12'31.489" E -20946.9810 -2845277.1690
Page:	1 of 3	Revised by:	
		Revision date:	