

INVITATION TO PARTICIPATE:

SABIS SCHOOL

BACKGROUND INFORMATION DOCUMENT

Purpose

The purpose of this Background Information Document is to provide information to Interested and Affected Parties about the proposed Sabis School – School development and related infrastructure on Portion 20 of the Farm Zwartkoppies 364 JR, Gauteng Province.

The Basic Assessment Procedure is in process under the National Environmental Management Act 2014 legislation and a Notice of Intent was lodged with the Gauteng Department of Agriculture and Rural Development (GDARD). Discussions are being held with GDARD to determine the best approach to the application prior to lodging the application.

This Background Information Document explains the proposed project and the regulatory processes that must be complied with, while providing Interested and Affected Parties with the opportunity to:

- Register as stakeholders in the public participation process; and
- Make initial comments on and contributions to the proposed project.

Contact person for representation on the application:

LEAP Contact Person: Nkhensani Sithole

Tel: 012 344 3582

Fax: 086 606 6130

P.O. Box 13185 Hatfield, 0028

E-mail : env@leapenviro.co.za

Public Participation Assistant: Zelda van Wyk

Tel: (012) 344 3582

E-mail: env3@leapenviro.co.za

Affected properties

Location: A Portion 20 of the Farm Zwartkoppies 364 JR

Extent: Approximately 6,06 hectares

Project

The Applicant intends to develop a School development and related infrastructure on Portion 20 of the Farm Zwartkoppies 364 JR

Your comment is important

Your comments will ensure that all relevant issues are evaluated in the Basic Assessment Report. You are requested to complete the enclosed registration and comment sheet, write a letter, call or e-mail the public participation office in Pretoria (Nkhensani Sithole). Upon request, you will then receive further information about the proposed project and the Basic Assessment process.

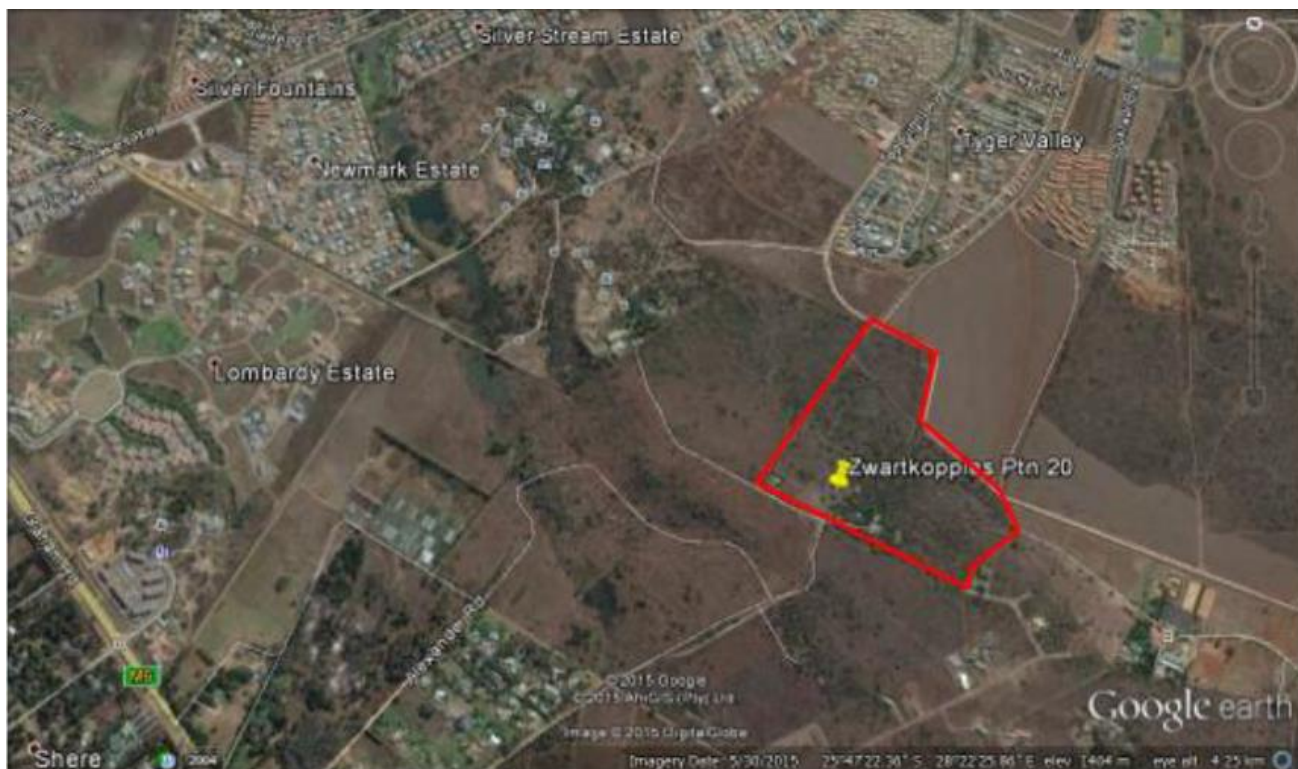


Figure 1: Approximate Location of a Portion 20 of the Farm Zwartkoppies 364 JR

What is a BA?

Sonsprop (Pty) Ltd (The Applicant) to commence with the proposed development, must conduct a Basic Assessment process and submit a Basic Assessment Report (BAR) to the regulatory authorities in support of an application for environmental authorisation to proceed with the project. A Basic Assessment process is a well-defined and regulated process, in terms of the National Environmental Management Act, involving public participation and technical studies, to identify issues of concern and to evaluate the environmental and socio-economic impacts of a proposed project.

Basic Assessments are used by planning authorities to obtain an objective view of the potential environmental and social impacts that could arise during the construction and operation of the proposed development. This information must provide a sound basis for decision-making by the authorities.

The end product of a basic assessment process is a Basic Assessment Report, which must:

- Identify the potential impacts of the proposed activities;
- Outline the public participation process undertaken; Illustrate the issues, concerns and suggestions raised by Interested and Affected Parties; and
- Outline the environmental management and mitigation measures that must be taken to avoid or reduce negative impacts and enhance positive impacts.

The activities to be applied for

Indicate the number of the relevant Government Notice: Activity No (s) (relevant notice): e.g. Listing notices 1, 2 or 3 Describe each listed activity as per the wording in the listing notices:

GN. R 983, 8 December 2014	Listing Notice 1 9	The development of infrastructure exceeding 1000 metres in length for the bulk transportation of water or storm water – (i). With an internal diameter of 0.36 metres or more; or (ii). With a peak throughput of 120 liters per second or more Excluding where – (a). Such infrastructure is for bulk transportation of water or storm water or storm water drainage inside a road reserve, or (b). Where such development will occur within an urban area
-------------------------------	-----------------------	--

GN. R 983, 8 December 2014	Listing Notice 1 11	The development and related operation of infrastructure exceeding 1000 metres in length for the bulk transportation of sewage, effluent, process water, waste water, return water, industrial discharge or slimes – (i). With an internal diameter of 0.36 metres or more; or (ii). With a peak throughput of 120 litres per second or more; Excluding where – (a). Such infrastructure is for bulk transportation of sewage, effluent, process water, waste water, return water, industrial discharge or slimes inside a road reserve; or (b). Where such development will occur within an urban area
GN. R 983, 8 December 2014	Listing Notice 1 24	The development of- (i). a road for which an environmental authorisation was obtained for the route determination in terms of activity 5 in Government Notice 387 of 2006 or activity 18 in Government Notice 545 of 2010; or (ii). a road with a reserve wider than 13,5 meters, or where no reserve exists where the road is wider than 8 metres; but excluding- (a). roads which are identified and included in activity 27 in Listing Notice 2 of 2014; or (b). roads where the entire road falls within an urban area
GN. R 983, 8 December 2014	Listing Notice 1 27	The clearance of an area of 1 hectares or more, but less than 20 hectares of indigenous vegetation, except where such clearance of indigenous vegetation is required for – (i). The undertaking of a linear activity; or (ii). Maintenance purposes undertaken in accordance with a maintenance management plan
GN. R 983, 8 December 2014	Listing Notice 1 45	The expansion of infrastructure for the bulk transportation of water or storm water where the existing infrastructure- (i). has an internal diameter of 0,36 metres or more; or (ii). has a peak throughput of 120 litres per second or more; and (a). where the facility or infrastructure is expanded by more than 1000 metres in length; or (b). where the throughput capacity of the facility or infrastructure will be increased by 10% or more; excluding where such expansion- (aa) relates to transportation of water or storm water within a road reserve; or (bb) will occur within an urban area.
GN. R 983, 8 December 2014	Listing Notice 1 46	The expansion and related operation of infrastructure for the bulk transportation of sewage, effluent, process water, waste water, return water, industrial discharge or slimes where the existing infrastructure- (i). has an internal diameter of 0,36 metres or more; or (ii). has a peak throughput of 120 litres per second or more; and (a). where the facility or infrastructure is expanded by more than 1000 metres in length; or (b). where the throughput capacity of the facility or infrastructure will be increased by 10% or more; excluding where such expansion- (aa) relates to transportation of sewage, effluent, process water, waste water, return water, industrial discharge or slimes within a road reserve; or (bb) will occur within an urban area.
GN. R 985, 8 December 2014	Listing Notice 3 4	The development of a road wider than 4 metres with a reserve less than 13,5 metres. (c) In Gauteng: i. A protected area identified in terms of NEMPAA, excluding

		<p>conservancies;</p> <p>ii. National Protected Area Expansion Strategy Focus Areas;</p> <p>iii. Gauteng Protected Area Expansion Priority Areas;</p> <p>iv. Sites identified as Critical Biodiversity Areas (CBAs) and Ecological Support Areas (ESAs) in the Gauteng Conservation Plan or in bioregional plans;</p> <p>v. Sites identified within threatened ecosystems listed in terms of the National Environmental Management Act: Biodiversity Act (Act No. 10 of 2004);</p> <p>vi. Sensitive areas identified in an environmental management framework adopted by relevant environmental authority;</p> <p>vii. Sites identified as high potential agricultural land in terms of Gauteng Agricultural Potential Atlas;</p> <p>viii. Important Bird and Biodiversity Area (IBA);</p> <p>ix. Sites or areas identified in terms of an International Convention;</p> <p>x. Sites managed as protected areas by provincial authorities, or declared as nature reserves in terms of the Nature Conservation Ordinance (Ordinance 12 of 1983) or the National Environmental Management: Protected Areas Act (Act No. 57 of 2003);</p> <p>xi. Sites designated as nature reserves within municipal SDFs; or</p> <p>xii. Sites zoned for a conservation or public open space or equivalent zoning.</p>
GN. R 985, 8 December 2014	Listing Notice 3 12	<p>The clearance of an area of 300 square metres or more of indigenous vegetation except where such clearance of indigenous vegetation is required for maintenance purposes undertaken in accordance with a maintenance management plan.</p> <p>(a) In Eastern Cape, Free State, Gauteng, Limpopo, North West and Western Cape Provinces:</p> <p>i. Within any critically endangered or endangered ecosystem listed in terms of section 52 of the NEMBA or prior to the publication of such a list, within an area that has been identified as critically endangered in the National Spatial Biodiversity Assessment 2004;</p> <p>ii. Within critical biodiversity areas identified in bioregional plans;</p> <p>iii. Within the littoral active zone or 100 metres inland from high water mark of the sea or an estuarine functional zone, whichever distance is the greater, excluding where such removal will occur behind the development setback line on erven in urban areas; or</p> <p>iv. On land, where, at the time of coming into effect of this Notice or thereafter such land was zoned open space, conservation or had an equivalent zoning.</p>

Public Participation

The public participation process during the Basic Assessment phase will enable Interested and Affected Parties to influence the course of the technical investigations and to review the findings of the independent studies that are undertaken. The environmental consultants will correspond directly with registered Interested and Affected Parties at various stages during the process to keep them informed of progress in the study and the timing of opportunities to be involved. The steps in the public participation process are outlined below.

- Letters of invitation accompanied by this Background Information Document and comment sheet to be distributed to adjacent landowners within 100m from the area of the proposed development, key individuals and organisations, announcing the project and inviting their comment
- Advertisements in Local newspaper (Citizen) announcing the proposed project and providing opportunity to comment

- Site notices to be erected at strategic places along the property in accordance with the requirements of the Basic Assessment Regulations, in order to announce the project
- Key stakeholders in the area will be informed by telephone, e-mail or facsimile.
- All issues received from stakeholders will be captured in the comments and response report (C&RR) which will be used to screen and prioritise issues for evaluation

Individual meetings with I&AP's will be held upon request, should it be required.

Due date for registration 09 January 2016

INVITATION TO PARTICIPATE: BA as per NEMA SABI SCHOOL REGISTRATION SHEET Accompanying Background Information Document October 2016	Public Participation Office LEAP Nkhensani Sithole P.O. Box 13185, Hatfield, 0028 FAX 086 606 6130 env@leapenviro.co.za Zelda van Wyk env3@leapenviro.co.za
--	--

Please complete and return to the contact details as provided, by 28th November 2016 to register

TITLE		FIRST NAME	
INITIALS		SURNAME	
ORGANISATION			
POSTAL ADDRESS			
		POSTAL CODE	
LAND LINE TEL NO		CELL NO	
FAX NO		EMAIL	

Please formally register me as an interested and affected party (I&AP) so that I may receive further information and notifications during the Basic Assessment process	YES	NO
--	------------	-----------

I would like my notifications and documents for comment as follows:					
Letter (mail)	E-mail	Fax	Telephone	On CD	Internet

In terms of this Public Participation process I disclose below any direct business, financial, personal or other interest that I may have in the approval or refusal of the application:

.....

COMMENTS (please use separate sheets if you wish)

I suggest that the following issues of concern be investigated:

.....

I suggest the following for the public participation process:

.....

Any other comments:

.....

Please register the following people as I&APs for this process:

.....

Signature

Date