

Figure 1. The black L-shaped feature shows the LiDAR footprint of Kweneng within the boundaries of the Gauteng Province.

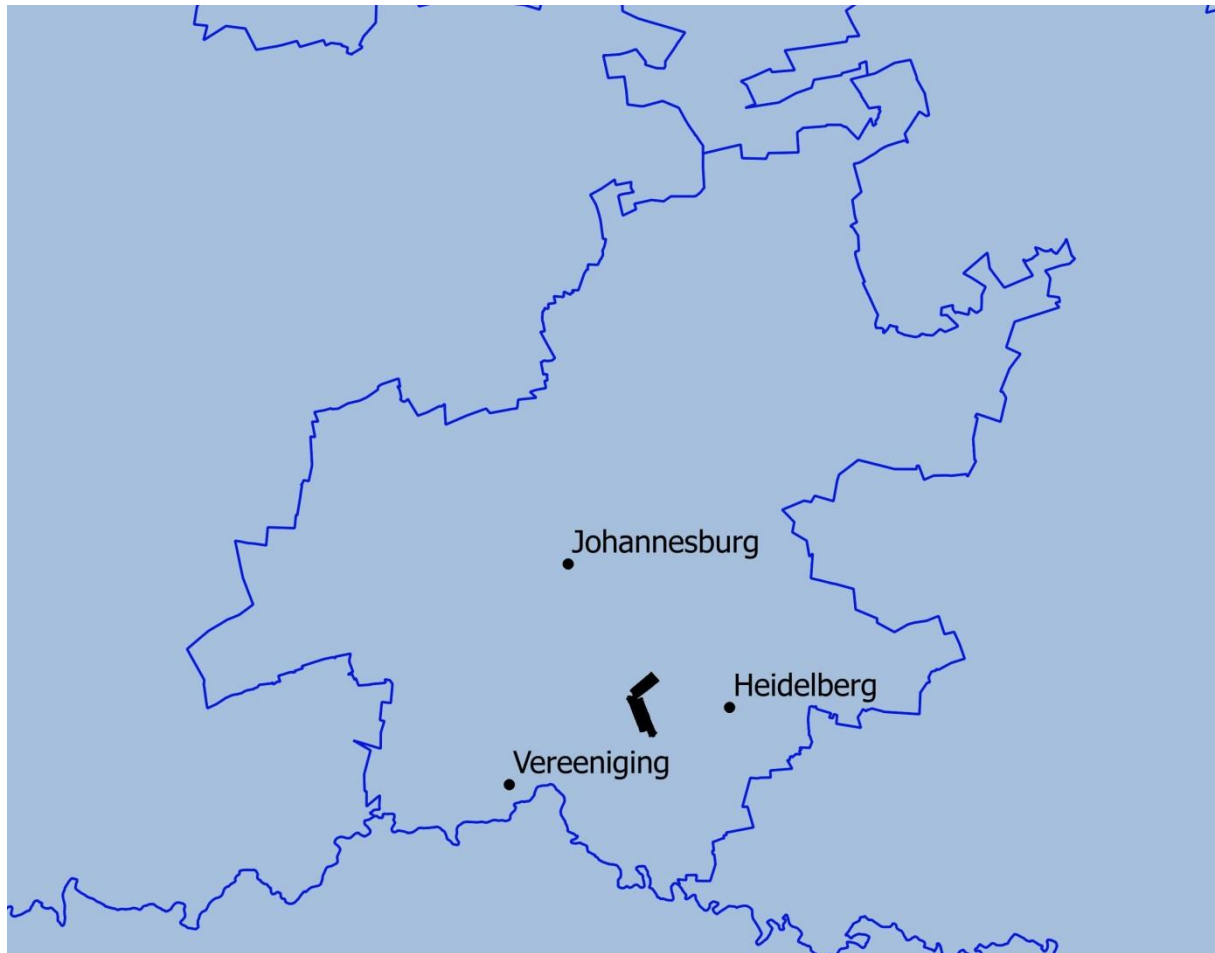


Figure 2. The green area shows the footprint of the farm 'Wagon Ranch' within the LiDAR footprint of Kweneng. The black dots are individual stone-walled compounds.



Figure 3. The red outlined area shows the footprint of Wagon Ranch against a topographic map of the area. The two compounds Porcupine and Meerkat are indicated.

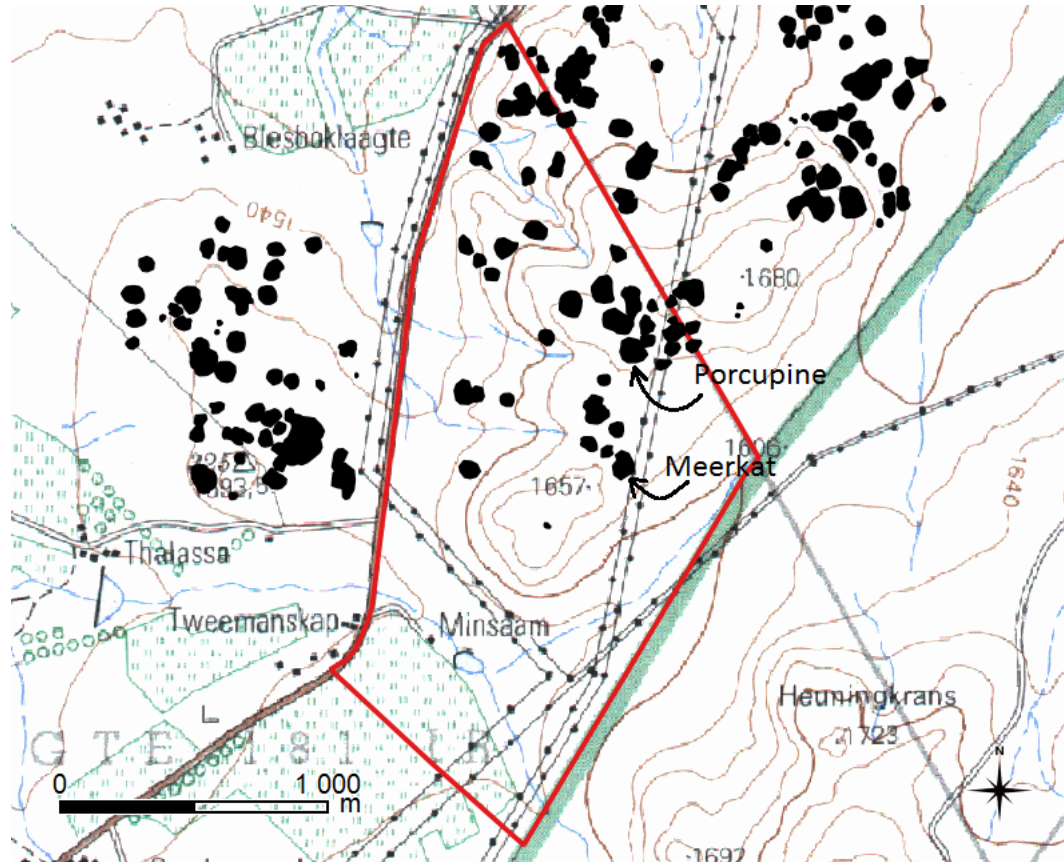


Figure 4. LiDAR image of Porcupine's compound (26°27'49.42"S; 28°10'13.18"E). The red dots show possible locations for shovel test pits.

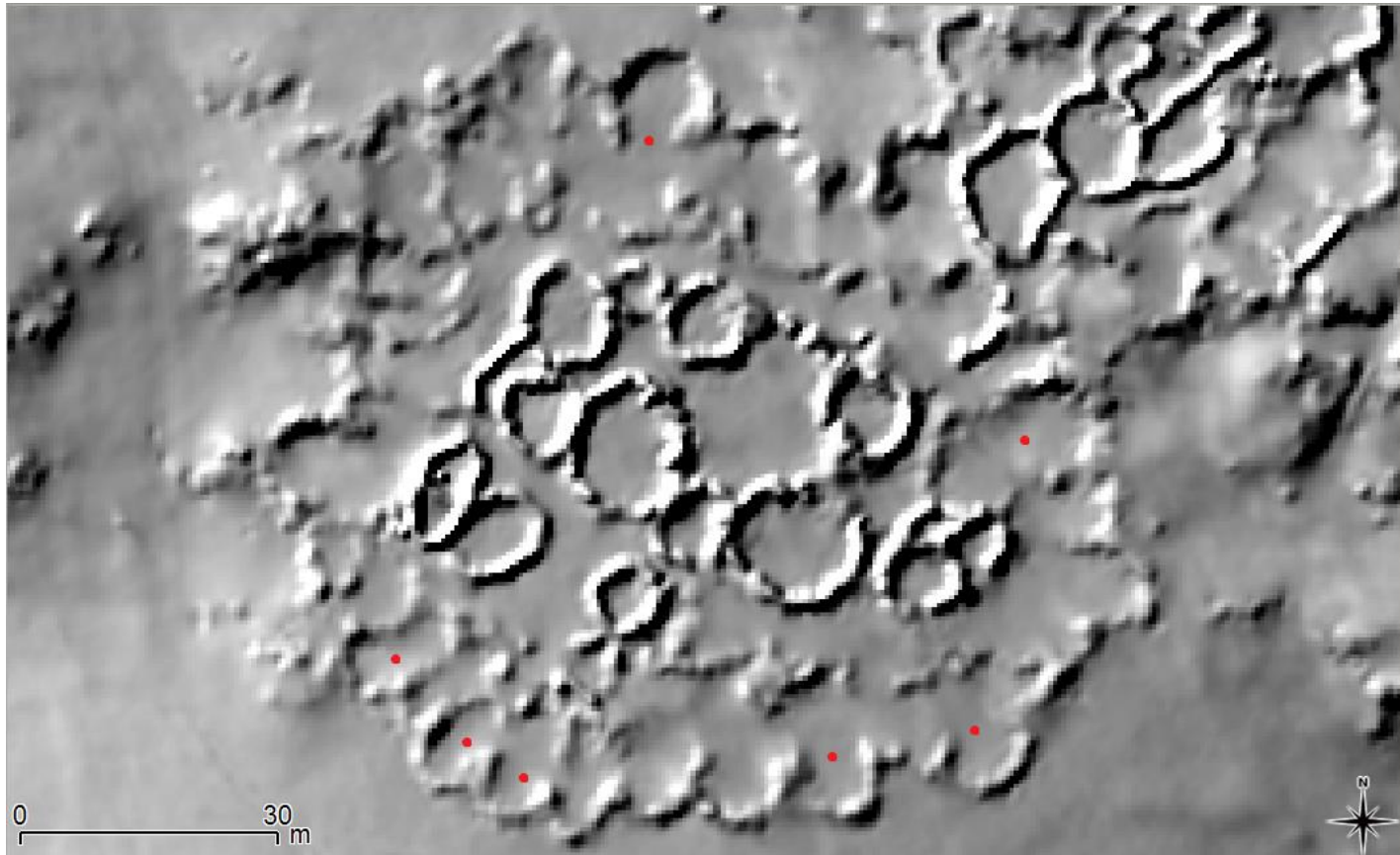


Figure 5. LiDAR image of Meerkat's compound (26°28'3.52"S; 28°10'11.92"E ). The red dots show possible locations for shovel test pits.

