



Emvelo Quality and Environmental consultant (PTY) Ltd
Promenade Building, 1st Floor, Unit D2, 24 Lira Link CBD,
Richards Bay, 3900. P.O. Box 101672, Meerensee, 3901
Tel: 035 789 0632 1 8760, Cell: (078) 2849 332 Fax: 086 577 5220,
email: info@emveloconsultants.co.za

BACKGROUND INFORMATION DOCUMENT

**THE PROPOSED PLANTING OF
POMEGRANATE TREES AT UITKOMST,
KWEKSPUIT, BOSHOFF VLEI AND
LUVUNO FARMS WITHIN THE
JURISDICTION OF THE EMADLANGENI
LOCAL MUNICIPALITY, AMAJUBA
DISTRICT, KWAZULU-NATAL**

July 2019

Prepared by:

**Emvelo Quality and Environmental
Consultant (PTY) Ltd**

On Behalf of

Saidy farming (PTY) Ltd



INTRODUCTION

Saidy farming (Pty) Ltd intends to cultivate pomegranate trees on approximately 2909.11 hectares of land. Therefore, an environmental impact assessment (EIA) has commenced, assisting Saidy farming in identifying all potential adverse environmental consequences of the project, their extent, significance and to ensure that the environmental management requirements are adequately implemented.

The purpose of this Background information document is to provide you, as an Interested or Affected Party (I&AP), with a brief description of the EIA process to be undertaken and to obtain comments and contributions from I&AP's with regards to the potential impacts to the environment by the proposed project.

PROJECT DESCRIPTION

Saidy Farming proposes to cultivate approximately 2909.11 hectares of land in order to plant pomegranates trees on the following farms:

1. Portion 1 (Remaining extent) Uitkomst Farm Number 95
2. Portion 2 (Remaining extent) of Uitkomst Farm Number 95
3. Portion 4 of Uitkomst Farm Number 95

4. Portion 1 (Remaining extent) of Kweekspruit Farm Number 22, and
5. Portion 7 (Remaining extent) of Kweekspruit Farm Number 22.
6. Boshoff Vlei No 452
7. Luvuno No 17498

There is a pan, a dam and two rivers on the border of the properties. However, the cultivation and the planting of trees would not negatively impact the aforementioned water resources, since a 50 meters buffer will be applied between the plantations and water resources, Refer to Appendix A for Locality Map.

WHAT IS AN ENVIRONMENTAL IMPACT ASSESSMENT?

An EIA is an effective planning and decision-making tool, which allows for the identification of potential adverse environmental consequences of a proposed project, and its management through the planning process.

In terms of the National Environmental Management Act, 1998 (Act No.107 of 1998), as read with the Environmental Impact Assessment (EIA) Regulations of 04 December 2017, an Environmental Authorization must be obtained from the relevant decision-making authority, the Department of Economic Development, Tourism and Environmental Affairs (DEDTEA), prior to the commencement of any of the listed activities that may result in

potential negative impacts on the environment. Thus, an environmental impact assessment is required. A full EIA process includes the Application, Scoping, and Environmental Impact Assessment phase and the public participation process.

ENVIRONMENTAL IMPACT ASSESSMENT PROCESS

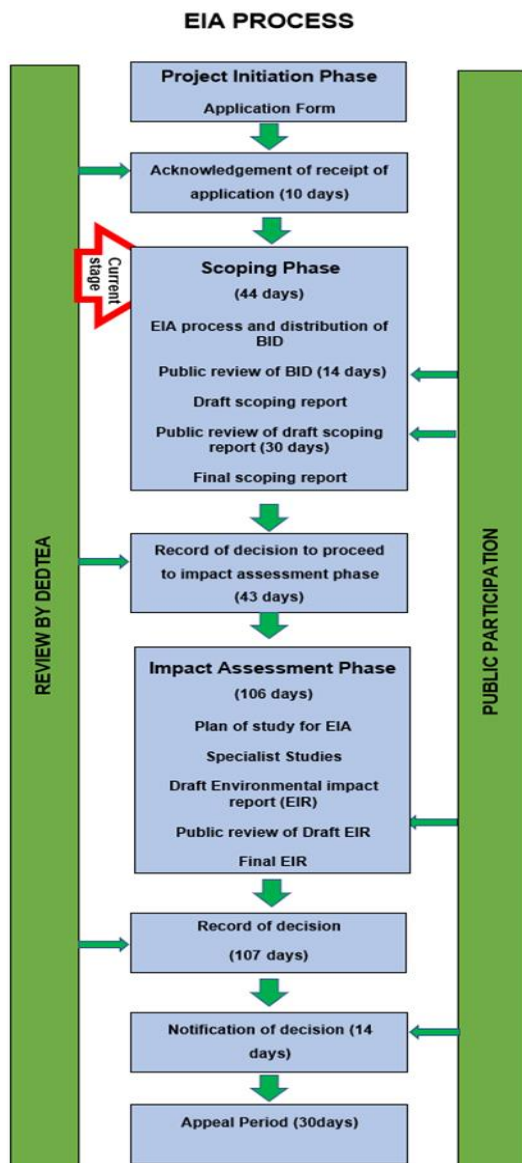


Figure 1: EIA process

In terms of the Environmental Impact Assessment (EIA) regulations, an independent Environmental Assessment Practitioner must be appointed to conduct the EIA. Therefore, Emvelo Consultant has been appointed to conduct the EIA. Emvelo will identify and assess the potential environmental impacts associated with the proposed activity by conducting an objective and independent EIA in which all the relevant information and opinions of Interested and Affected Parties (IAPs) will be collected and passed on to the Department of Economic Development Tourism and Environmental Affairs (EDTEA). In this way, an informed decision-making process can take place.

LISTED ACTIVITIES TRIGGERED BY THIS PROJECT

The proposed project triggers the following listed activities in Listing Notices of (GNR 983).

Table 1: Listed Activities

LISTING NOTICE	ACTIVITIES	DESCRIPTION OF ACTIVITY
2	Activity 13	The physical alteration of virgin soil to agriculture, or afforestation for the purpose of commercial tree, timber or wood production of 100 hectares or more

LISTING NOTICE	ACTIVITIES	DESCRIPTION OF ACTIVITY
2	Activity 15	The clearance of an area of 20 hectares or more of indigenous vegetation, excluding where such clearance of indigenous vegetation is required for (i) The undertaking of linear activity; or (ii) maintenance purposes undertaken in accordance with a maintenance management plan
1	Activity 19	The infilling or deposition of any material of more than 10m ³ into or the dredging, excavation, removal of soil, sand, shell, shell grit, pebbles or rock of more than 10m ³ from a watercourse

LISTING NOTICE	ACTIVITIES	DESCRIPTION OF ACTIVITY
3	Activity 12	The clearance of an area of 300 square meters of indigenous vegetation except where such clearance is required for the maintenance purposes undertaken in accordance with a maintenance management plan (v) Within critically biodiversity areas as identified in systemic biodiversity plans adopted by the competent authority or in bioregional plans

WHAT IS PUBLIC PARTICIPATION?

Public participation is the process that promotes information sharing, consultation and active involvement amongst stakeholders and all interested and affected parties.

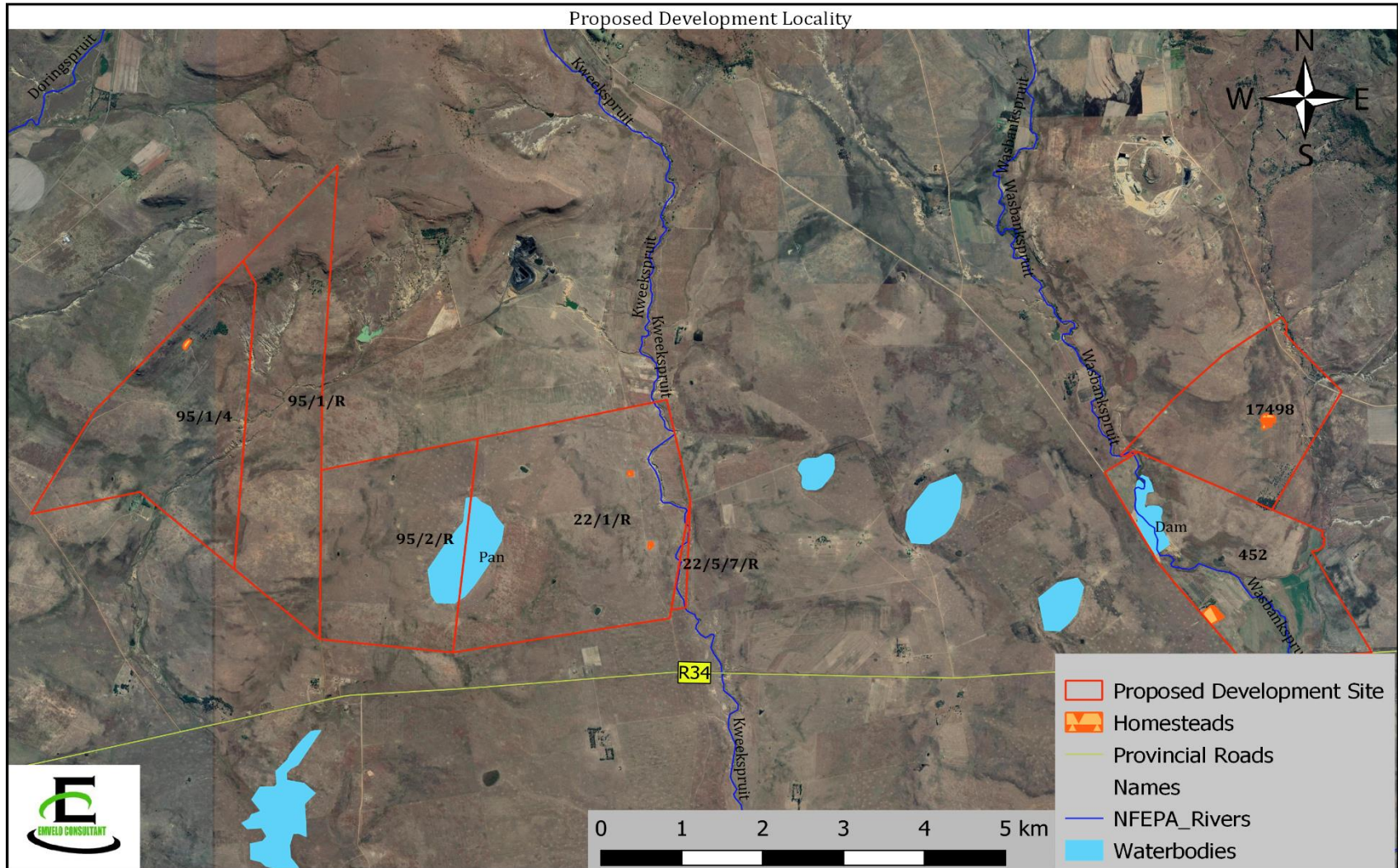
During the Public Participation Process, input from the proponent, technical experts, government authorities and the general public will be gathered to result in a better understanding of the project for all involved thus ensuring informed decision-making throughout the process.

REGISTRATION OF INTERESTED AND AFFECTED PARTIES.

Any person, company, authority or other entity that might be directly or indirectly affected by the proposed activity is invited to register as an I&AP, in order to assist the EAP in identifying possible environmental, economic and social impacts of the proposed development and to make suggestions for mitigations. These comments will be included as part of the Scoping report which will be submitted to the Department of Economic Development, Tourism and Environmental Affairs (EDTEA) for consideration.

I&APs may forward their written comments along with their contact details within 14 days from receiving the document to Phumzile Lembede. Postal address; P. O. Box 101672, Meerensee, Tel: 035 789 0632, Cell: (078) 2849 332, Fax: 086 577 5220, email: info@emveloconsultants.co.za.

APPENDIX A
(LOCALITY MAP)





Emvelo Quality and Environmental Consultant (PTY) Ltd

Promenade Building, 1st Floor, Unit D2, 24 Lira Link CBD,
Richards Bay, 3900.

REGISTRATION AND COMMENT FORM

**EIA Process for the proposed Farming of Pomegranate Tree at Uitkomst, Kweekspuit, 6.
Boshoff Vlei and Luvuno Farms.**

I wish to register as an interested and affected party and/ or bring to the attention Emvelo Consultant the following information.

<u>Personal Information</u>	
Name and Surname	
Company /organization	
Physical Address	
<u>Postal address</u>	
<u>Telephone:</u>	<u>Cell:</u>
Email:	
<u>Comments</u>	

Signature

Date