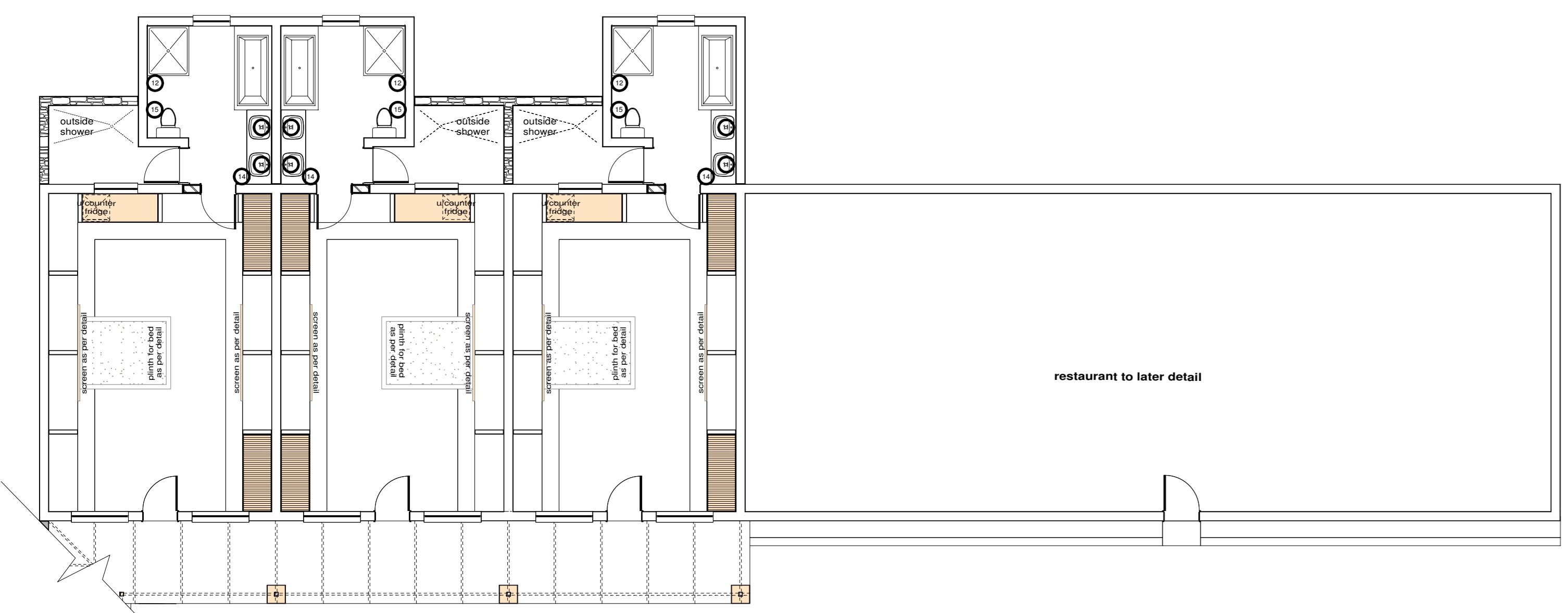
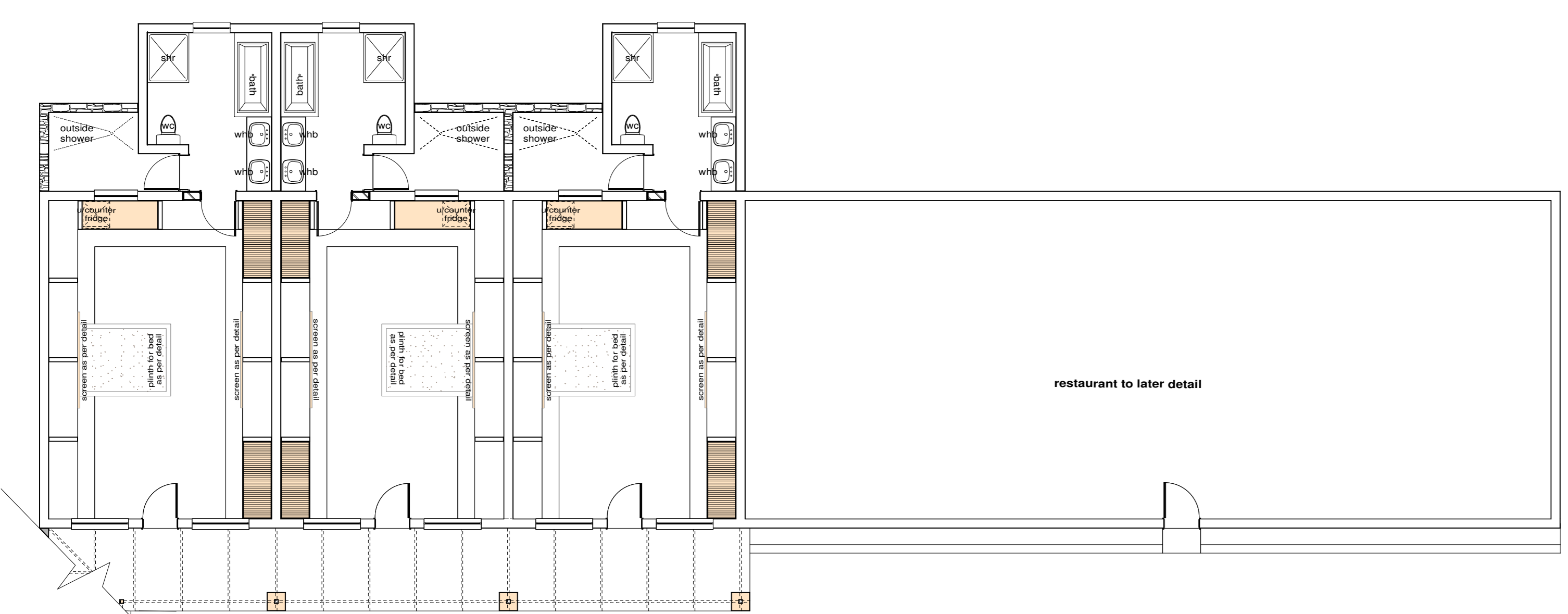


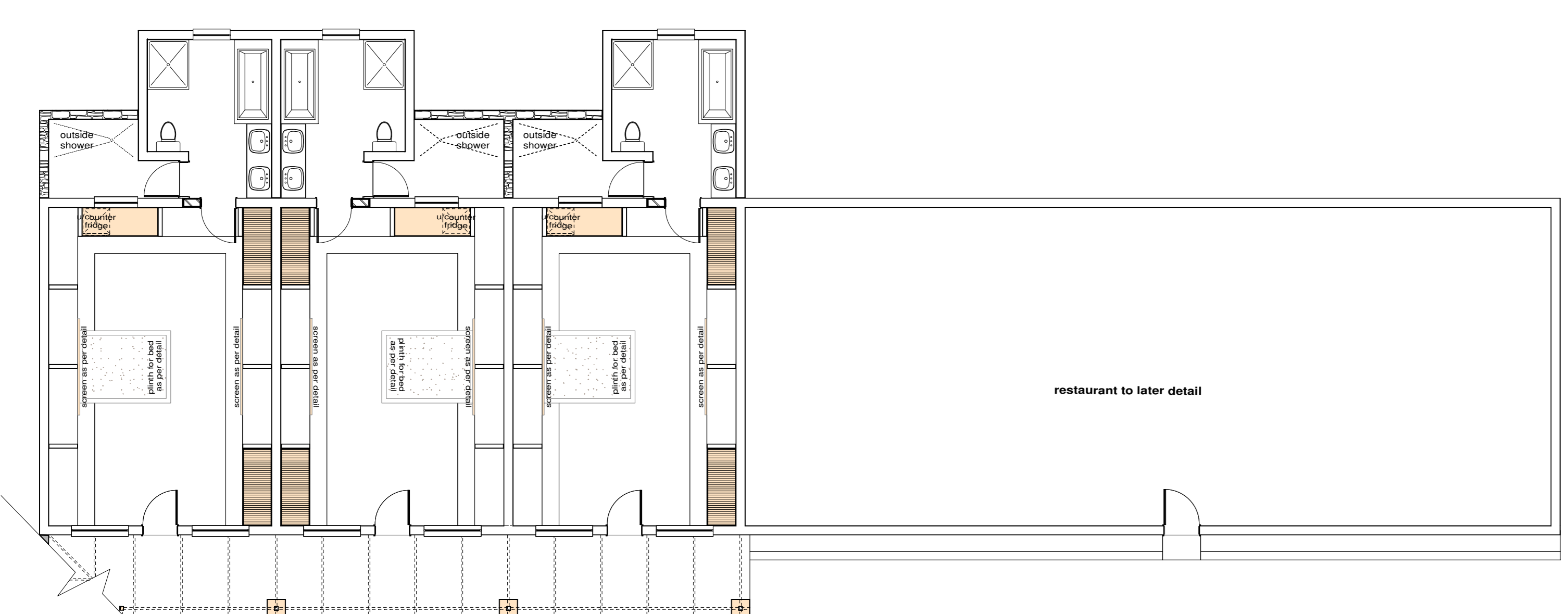
sanitary fittings key
scale 1:100



sanitary hardware key
scale 1:100



sewer plan
scale 1:100



water reticulation plan
scale 1:100

- 01 Vaal Sanitaryware Concord II CC vitreous china close coupled suite colour White (Code: 772802) comprising Soft-Close seat, comprising 90° outlet closed rim washdown pan with matching 6 litre cistern top pull flush cistern including fittings.
- 02 Vaal Sanitaryware Pearl Paraplegic vitreous china floor mounted paraplegic washdown suite colour White (Code: 73005C), comprising semi close couple 90° outlet open rim washdown pan and matching 9 litre cistern complete with lid, fittings and purpose made side-flush lever and purpose-made chromium plated side flush lever.
- 03 Vaal Sanitaryware Weaver 1TH vitreous china counter top vanity basin colour White (Code: 704201), size 575 x 455mm with one taphole. fitted onto vanity top (elsewhere specified) including fanger brackets (Code: 813123) with Cobra Watertech Callisto plain raised single tap hole basin mixer with 110mm body extension, mounting kit, angle valves with sliding flanges, flexible connection tubes and temperature and flow control cartridge (Code: CL-951R), manufactured in accordance with SANS 1480:2005 (BS EN 1286). Cobra Watertech 32mm chrome plated bottle tap (Code: 340) with 75mm deep re-seat, adjustable telescopic pipe and 32mm outlet.
- 04 Vaal Sanitaryware Weaver 1TH vitreous china counter top vanity basin colour White (Code: 704201), size 575 x 455mm with one taphole. fitted onto vanity top (elsewhere specified) including fanger brackets (Code: 813123) with Cobra Watertech Callisto plain raised single tap hole basin mixer with 110mm body extension, mounting kit, angle valves with sliding flanges, flexible connection tubes and temperature and flow control cartridge (Code: CL-951R), manufactured in accordance with SANS 1480:2005 (BS EN 1286).
- 05 DadoBaths Zenith free standing bath complete with all waste fittings etc. as per DADO Africa (Pty) Ltd. with Aqualine Square free standing bath tap and hand shower mixer, as per DADO Africa (Pty) Ltd. DADO Africa (Pty) Ltd 012 803 9431
- 06 Cobra Watertech 20mm standard brass hose bibbs (code: 108-03) with wingnut, lining and 20mm hose union, manufactured in accordance with SANS 226:2009 Type 1 (BS 1010).
- 07 Cobra Watertech Ledimo 15mm chrome plated F x F underwall stoptap (Code: LO-228-15) with sliding wall flange, manufactured in accordance with SANS 226:2004 Type 2 (BS 5412). stop taps to be installed at each toilet, basin, urinal and sink.
- 08 Cobra Watertech 15mm chrome plated Full Flow shower head (Code: 74-15), size 150mm diameter with classic spray, coupled to Cobra Watertech 15mm chrome plated shower arm (Code: 20111-205) with 250mm throw, coupled to 2x Cobra Watertech Ledimo 15mm chrome plated C x C (Compression) underwall stoptap (Code: LO-238-15) with sliding wall flange, manufactured in accordance with SANS 226:2004 Type 1 (BS 5412), one for hot water and one for cold water.

- sanitary hardware:**
- 09 Franke CNTXR 32mm diameter satin finished stainless steel cistern back rail (Code: 359912), size 750 x 250mm with Franke Fine Grip surface, plugged and screwed to the wall with stainless steel screws.
 - 10 Franke CNTX700A 32mm diameter satin finished stainless steel angle bar (Code: 359877), size 618 x 95 x 258mm with Franke Fine Grip surface, plugged and screwed to the wall with stainless steel screws.
 - 11 Franke M800HD 8mm mirrors (Code: 359922), size 600 x 500mm high, concealed thief resistant fixings, plugged and screwed to the wall with stainless steel screws.
 - 12 Franke Chronos B8610 1,25mm thick satin finished stainless steel perforated waste container (Code: 359825), size 410 x 222 x 380mm high with lock, 180 degree radius front and perforated face pattern, waste bin capacity of 23 litres, plugged and screwed to the wall with stainless steel screws.
 - 13 Franke Chronos SDB0 soap dispenser (Code: 359802), size 44mm diameter x 144 x 85mm high with a replaceable 1 litre polyethylene container.
 - 14 Franke Stratos STRK600 1,2,1 5mm thick satin finished stainless steel paper towel dispenser (Code: 359700), size 300 x 134 x 305mm high with a capacity of 300-400 towels and cylinder lock with standard Franke key, plugged and screwed to the wall with stainless steel screws.
 - 15 Franke Stratos STRK672 1,2,1 5mm thick satin finished stainless steel double toilet roll dispenser (Code: 359716), size 156 x 141 x 303mm high for 2 rolls maximum 108mm diameter with spindle system and cylinder lock with standard Franke key, plugged and screwed to the wall with stainless steel screws.

- sewer key:**
- Marley pipesystems 40mm uPVC waste pipes with all necessary bends, joints etc. installed as per manufacturers specifications and recommendations.
 - For installations above ground: Marley pipesystems 110mm uPVC plain waste pipes with all necessary bends, joints etc. installed as per manufacturers specifications and recommendations.
 - For installations under ground: Marley pipesystems 110mm uPVC socketed waste pipes with all necessary bends, joints etc. installed as per manufacturers specifications and recommendations.

- water reticulation key:**
- Isolation valves for toilets/urinals etc.
 - Cold water tap
 - Hot water tap
 - Cold water pipe (in wall or roofspace)
 - Hot water pipe (in wall or roofspace)
 - Main water feed from existing source
 - Non Return Valve
 - Isolating Valve

geyser specification:
Kwikol Kwikool direct close coupled thermosyphon solar water heating system with 180L solar vacuum tubes set system to include 150 Litre SOL 150 DIR round solar water heater complying with SANS 1307:2007, overall size 520mm diameter x 1025mm high with 20mm copper pipe and operating at 400kPa with 400kPa Kwikol Micro pressure control and expansion relief valve (Code: RHN3.114), 20mm draingcock and 25mm insulated pipe work including two Kwikol vacuum breakers (Code: KVM-200X), installed on hot and cold water supply, including all necessary brackets, frost resistant pipe seal, thermostatic mixing valve and 7 day digital geyser timer. Geyser to be positioned horizontally on roof slab, all in accordance with SANS 10284:2004 and SANS 10106:2006, connected to single phase electrical power supply with isolator 1m away from connection to geyser.

COPYRIGHT NOTICE
COPYRIGHT RESERVED
© 2017. Bakopane Architects cc
Copyright subsists in this drawing. The person or entity whose name appears in the list block of this drawing, is hereby granted a non-exclusive license to use, display, print and/or reproduce this drawing to the extent necessary to carry out and complete the project described in this title block of this drawing. This license in respect of the copyright is expressly limited as stated above and the person and/or entity referred to above shall not be entitled to grant sub-licenses in respect of the copyright in this drawing to any other entity. This license confers no ownership rights in the copyright vesting in the drawings and this drawing and the copyright subsisting therein will, at all times, remain the property of Bakopane Architects cc. Any unauthorised reproduction, publication, transmission, adaptation and/or inclusion of this drawing in a cinematograph film or television broadcast is an act of copyright infringement which will render the doer of the act liable for civil law copyright infringement and may in certain circumstances render the doer liable to criminal prosecution. Requests and enquiries concerning this drawing and the rights subsisting therein should be addressed to the copyright owner.

No.	Date	Notes	Drawn
Rev 01	2018-11-17	Revised for measurement	NOT
Rev 02	01-09-17	Issued drawings started	COU/ML

- GENERAL NOTES:**
1. Check all measurements, levels and details on site before commencement with work.
 2. Refer any discrepancies to architect.
 3. All work to be done in accordance with SANS-10400
 4. Nothing to be scaled from drawing. Request measurement from architect.
 5. Architect's & engineer's drawings to be read together.
 6. Drawing to be used for intention as mentioned in Drawing description.



CLIENTS SIGNATURE:



DEPARTMENT'S SIGNATURE:



PRINCIPAL AGENT SIGNATURE:



ARCHITECTS SIGNATURE:

TITLE:
PROPOSED ALTERATIONS & ADDITIONS TO TAUNG SKULL HERITAGE SITE FOR NORTH-WEST RURAL, ENVIRONMENTAL & AGRICULTURE DEPARTMENT PROVINCE OF NORTH-WEST

DRAWING DESCRIPTION: COMPOUND	ORIGINAL DRG. SIZE SCALE: 1:100	A1
REV.	0	

DRG No: TAUNG - 42017 - ARC - C008

n o r t h e r n b l o c k