

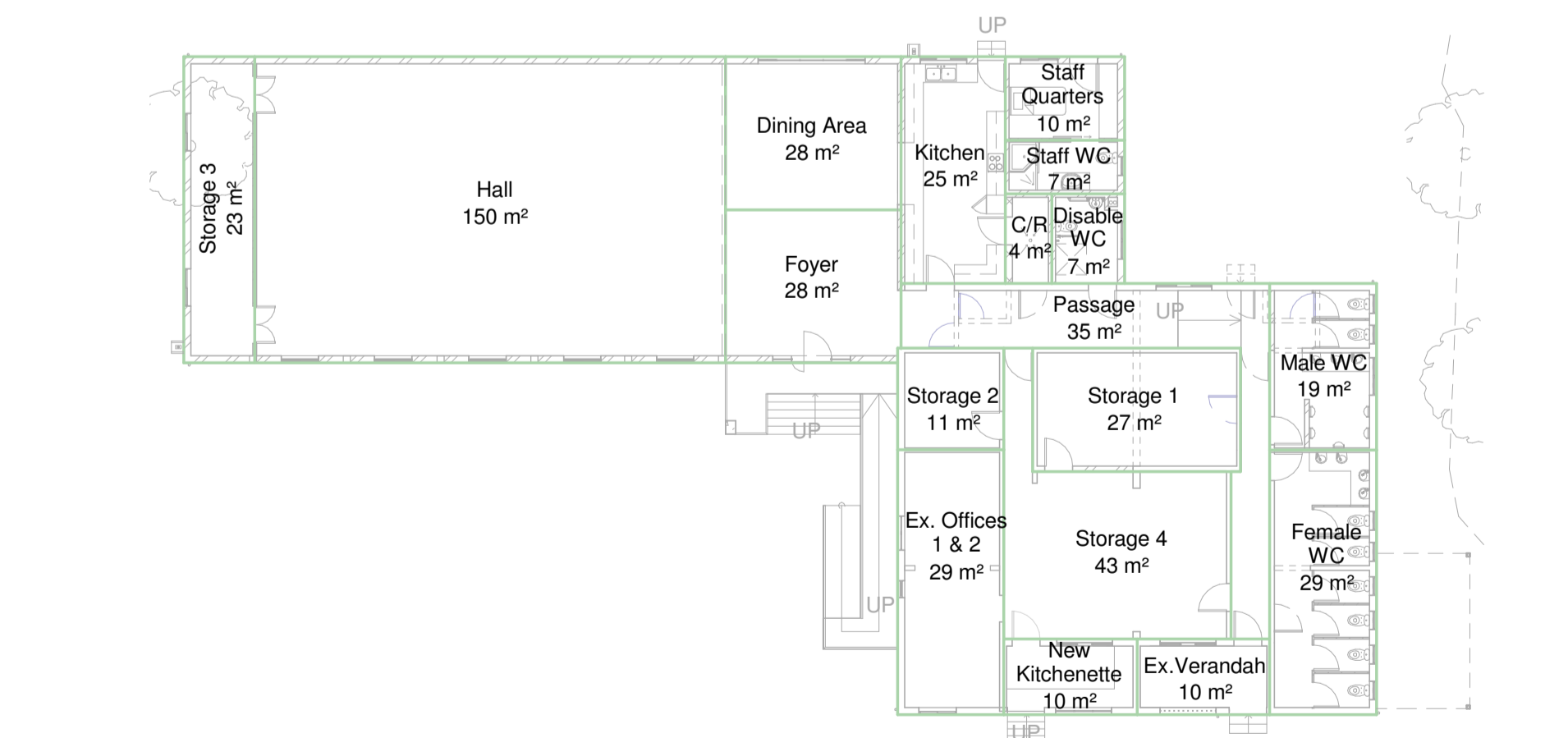
Window Schedule
1 : 50

Window Type	Width	Height	Description	Frames	Glass	Count
W1	600	2100	Powder coated fixed aluminium panes to comply with AAMSA and SANS 10400 Part B	Aluminium frame to comply with SANS 10400 Part B or SANS 727 or SANS 1553-2	Singled clear glass. Thickness of glazing to comply with SANS 10400 Part N	2
W2	1200	2100	Powder coated aluminium side hung window to comply with AAMSA and SANS 10400 Part B	Aluminium frame to comply with SANS 10400 Part B or SANS 727 or SANS 1553-2	Singled clear glass. Thickness of glazing to comply with SANS 10400 Part N	5
W3	1200	900	Powder coated aluminium side hung window to comply with AAMSA and SANS 10400 Part B	Aluminium frame to comply with SANS 10400 Part B or SANS 727 or SANS 1553-2	Singled clear glass. Thickness of glazing to comply with SANS 10400 Part N	3
W4	600	2100	Powder coated aluminium window (2 vertical top hung and 1 fixed pane) to comply with AAMSA and SANS 10400 Part B	Aluminium frame to comply with SANS 10400 Part B or SANS 727 or SANS 1553-2	Singled clear glass. Thickness of glazing to comply with SANS 10400 Part N	2
W5	2250	2100	Powder coated fixed aluminium panes to comply with AAMSA and SANS 10400 Part B	Aluminium frame to comply with SANS 10400 Part B or SANS 727 or SANS 1553-2	Singled clear glass. Thickness of glazing to comply with SANS 10400 Part N	1
W6	1500	900	Powder coated aluminium side hung window to comply with AAMSA and SANS 10400 Part B	Aluminium frame to comply with SANS 10400 Part B or SANS 727 or SANS 1553-2	Singled clear glass. Thickness of glazing to comply with SANS 10400 Part N	1
W7	600	600	Powder coated aluminium top hung window to comply with AAMSA and SANS 10400 Part B	Aluminium frame to comply with SANS 10400 Part B or SANS 727 or SANS 1553-2	Singled clear glass. Thickness of glazing to comply with SANS 10400 Part N	13

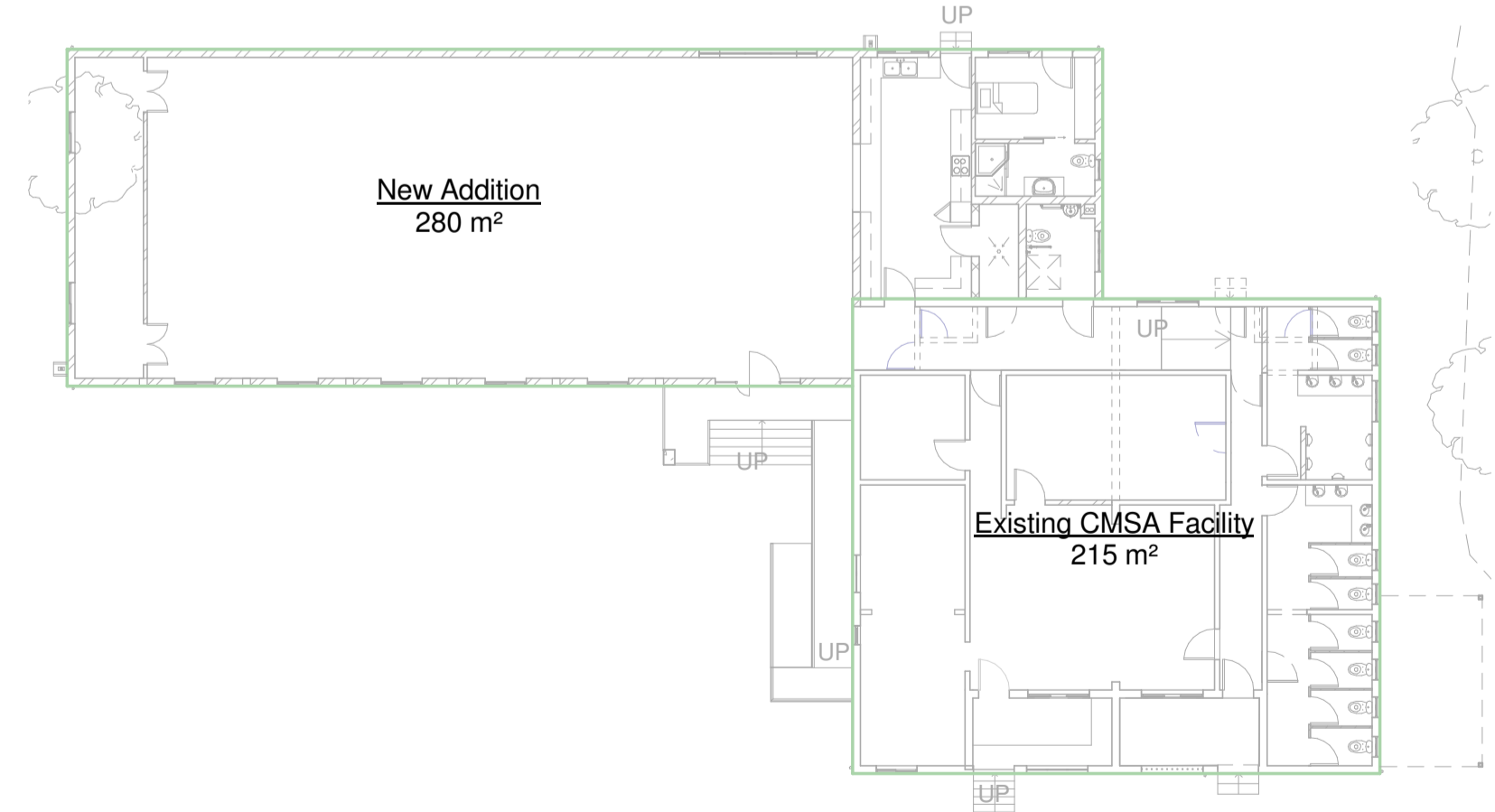
Rev	Date	Description
A	09/02/2013	Ready for Council Submission
B	21/11/2012	Costing
C	29/01/2013	Revised Design

1 Ground Floor plan
1 : 100

Final Design Fenestration																
Level	Count	Total Floor Area	Nett Floor Area	15% Nett Floor Area	Window Area	Climatic Zone	U Value	SHGC	Constant Conductance	Constant SHGC	Permissible Cu	Proposed Cu	Available Cu	Permissible SHGC	Proposed SHG	Available SHG
GROUND FLOOR	27	372.00 m ²	314.92 m ²	47.24 m ²	31.64 m ²	5	7.90	0.81	1.40	0.11	440.89	249.92	179.60	34.64	17.43	16.41



Name	Area
Storage 4	43 m ²
Storage 1	27 m ²
Storage 2	11 m ²
Ex. Offices 1 & 2	29 m ²
New Kitchenette	10 m ²
Ex. Verandah	10 m ²
Female WC	29 m ²
Male WC	19 m ²
Passage	35 m ²
Disable WC	7 m ²
C/R	4 m ²
Staff WC	7 m ²
Staff Quarters	10 m ²
Kitchen	25 m ²
Dining Area	28 m ²
Hall	150 m ²
Storage 3	23 m ²
Foyer	28 m ²
Grand total:	18 495 m ²



3 Total Area Overlay
1 : 200

2 Area Overlay
1 : 200

SIGNED FOR CONSTRUCTION

ARCHITECT:

CLIENT:

IF THIS DRAWING IS NOT SIGNED BY THE ARCHITECT IT IS NOT FOR CONSTRUCTION PURPOSES

PROJECT
Colleges of Medicine South Africa, Phase 1, ERF 9107/ 9108/ 9109/ 9110 Umbilo. 10/12/14/16 Lichfield Road

DESCRIPTION
SANS 10400 XA & Window Schedule

C A ARCHITECTS CC

Suite E MGA HOUSE
Wimble Close
Ballito Business Park
Po Box 6438 Zimbabwe 4418

Tel: +27 32 946 3830/1
Fax: +27 86624 9592

email: llewellyn@caarchitects.co.za
reg no 2621



Drawn Denise. G	Project nr: 347 Sheet nr: 347-WRK01-500	Date: 2014/01/28 10:08:08 AM Rev Nr: C
---------------------------	--	---