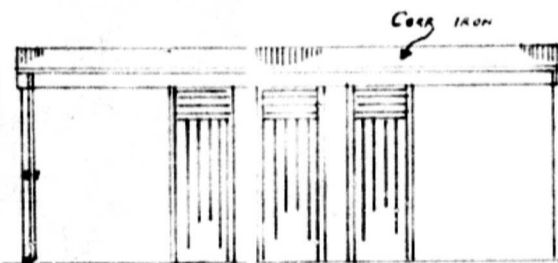


PROPOSED NATIVE QUARTERS ~ 612, MUSGRAVE ROAD ~ DURBAN.

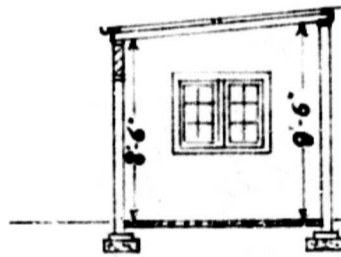
FOR

A. T. REID ESQ.

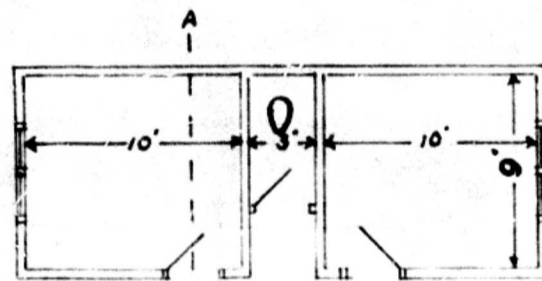
SCALE 8 FT = 1"



ELEVATION



SECTION A-A



PLAN

CITY OF DURBAN
PLANS APPROVED
SUBJECT TO CONFIRMATION BY THE
CITY COUNCIL AT ITS NEXT MEETING
NO. 26839 14-7-1937

J. H. L. Hill.

Drawn By T. JAMES 29/6/37

BLOCK PLAN

40 FT = 1"

