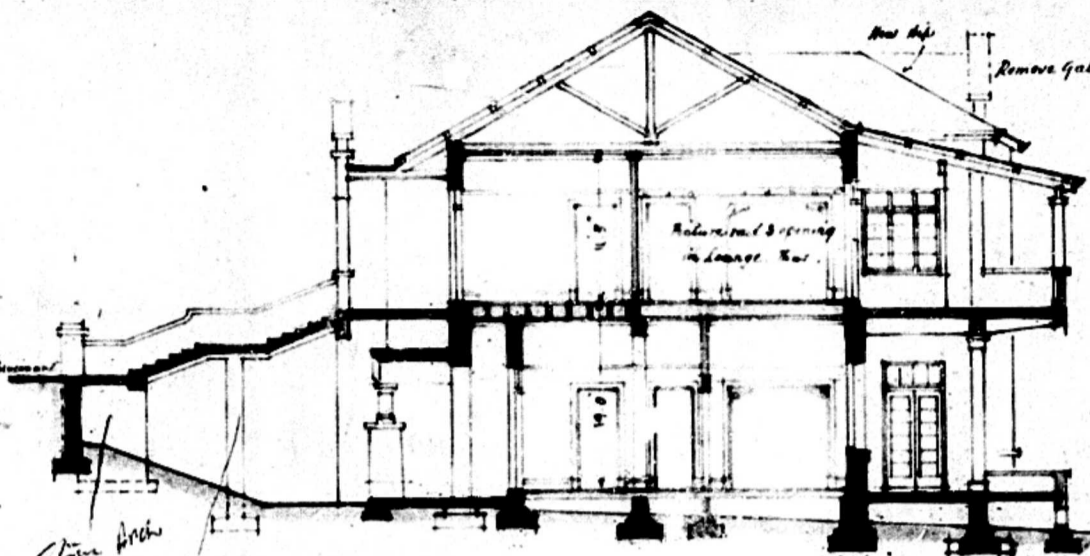
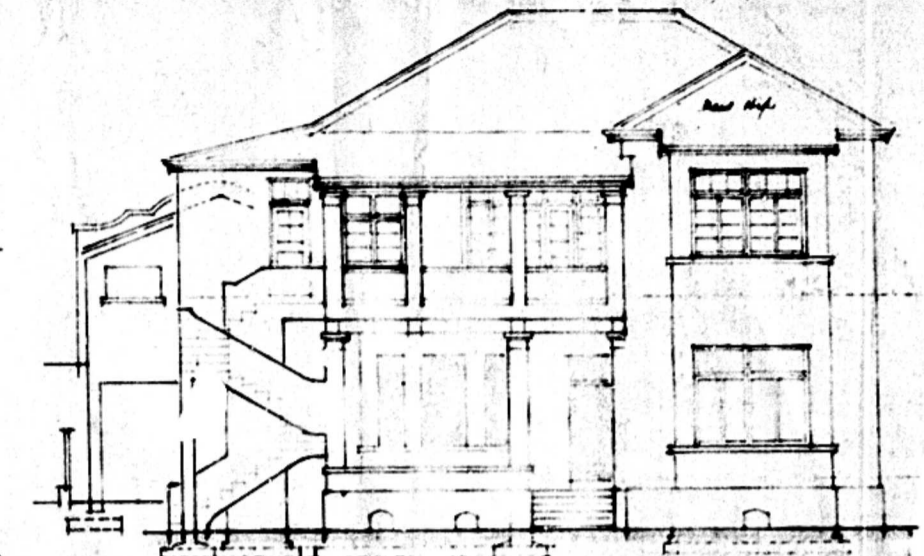


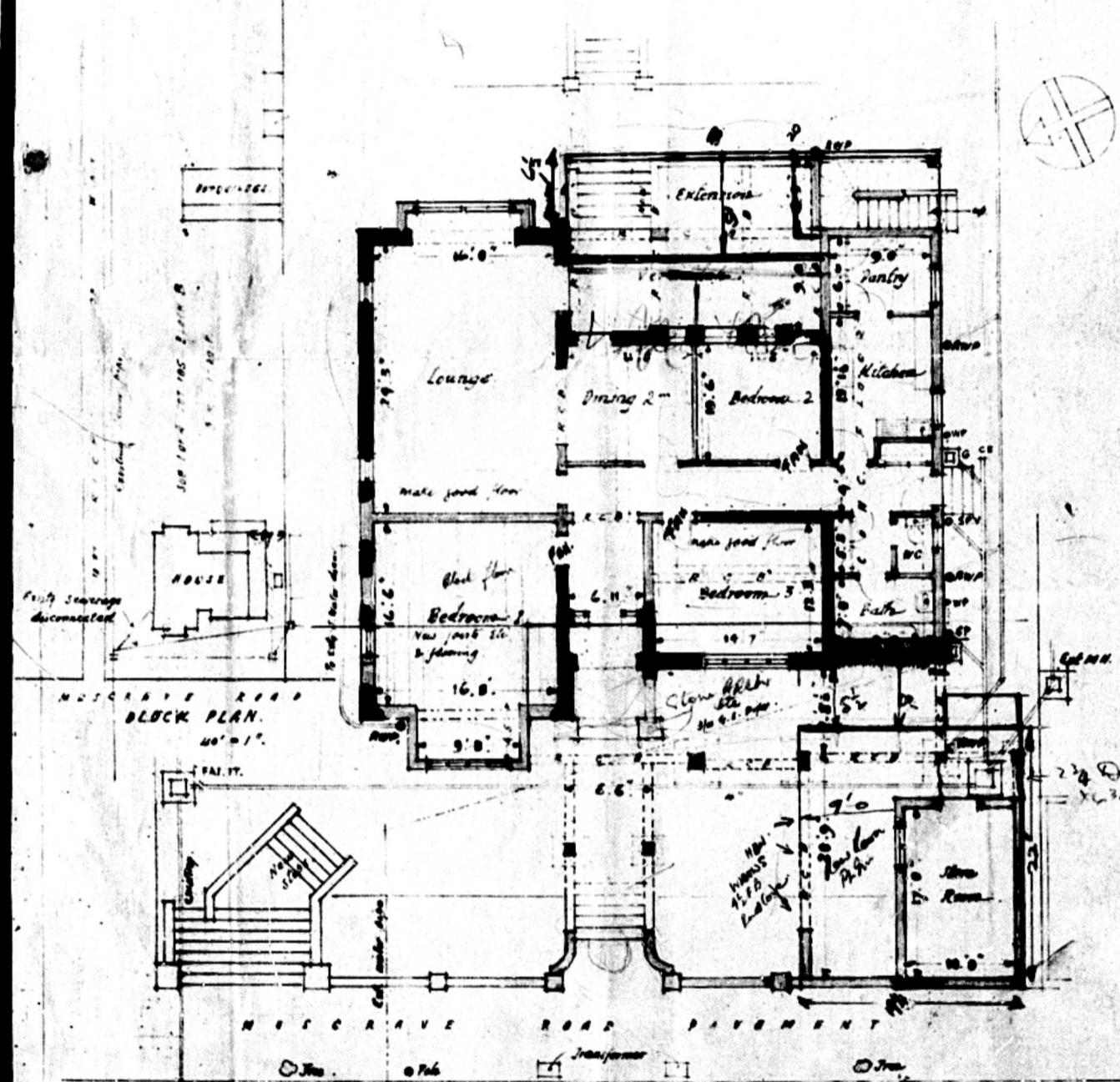
North Elevation



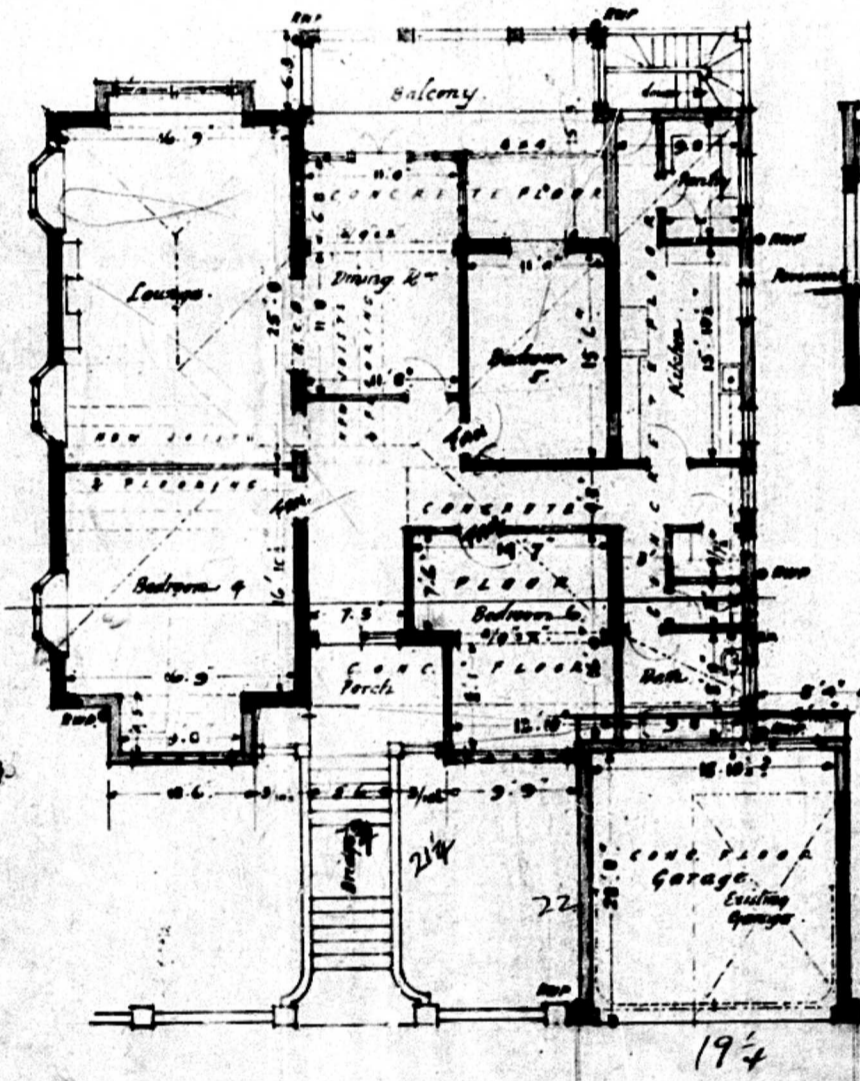
Section 1-1



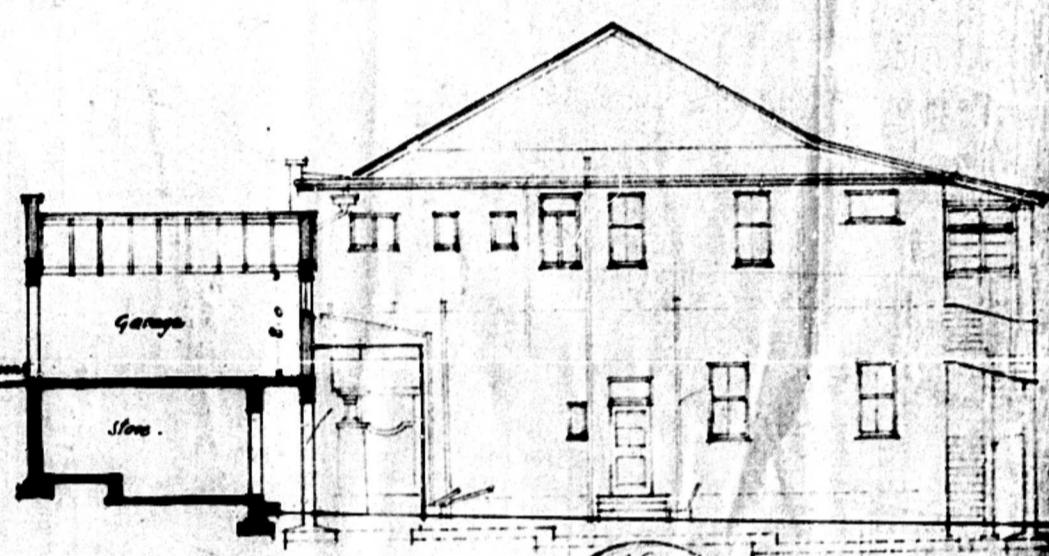
East Elevation



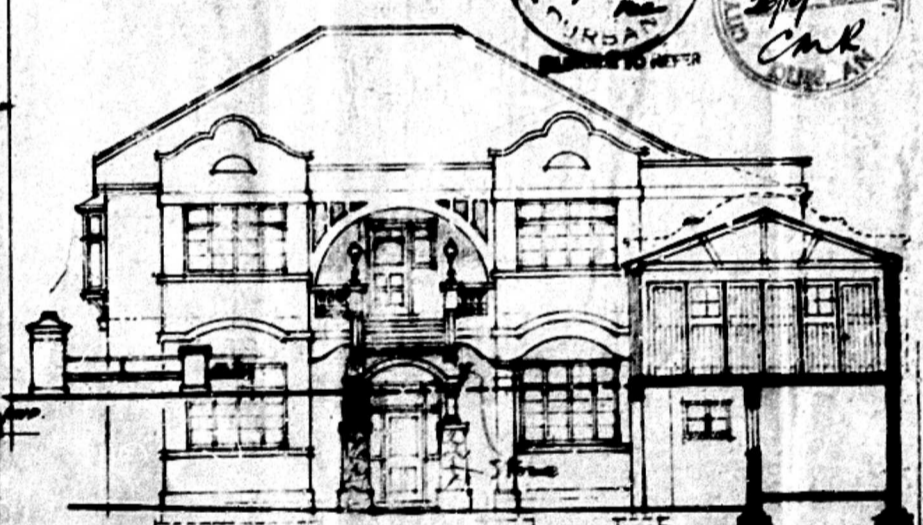
Plan of Ground Floor



Plan of First Floor



South Elevation



West Elevation



Proposed Alteration & Premises.
612 Musgrave R^d, Durban, for W. Francis Esq.
Scale 1/4" = 1'

Approved & Signed
W. Francis
July 1902. Durban

16-7
14-7
14-0
13-0
12-0
11-0
10-0
9-0
8-0
7-0
6-0
5-0
4-0
3-0
2-0
1-0
0-0