

**SCREENING REPORT FOR AN ENVIRONMENTAL AUTHORIZATION AS  
REQUIRED BY THE 2014 EIA REGULATIONS – PROPOSED SITE  
ENVIRONMENTAL SENSITIVITY**

**EIA Reference number:** Pre Submission

**Project name:** EIA642PR - CTN Mining - Farm Rooipoort 202 & Wildfontein 201

**Project title:** EIA642PR - CTN Mining - Farm Rooipoort 202 & Wildfontein 201

**Date screening report generated:** 20/01/2023 10:13:20

**Applicant:** CTN Mining

**Compiler:** Milnex CC

**Compiler signature:**  
.....

**Application Category:** Mining|Prospecting rights

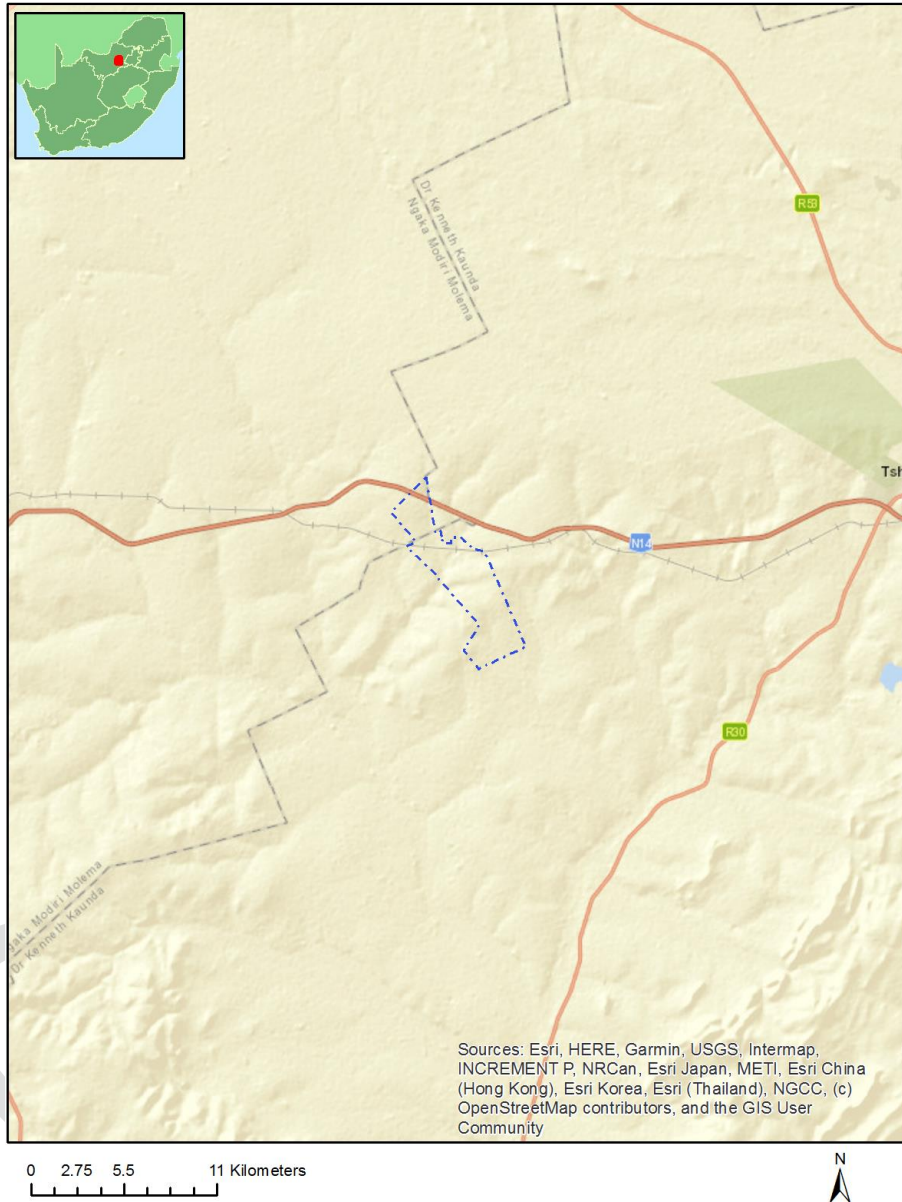
# Table of Contents

- Proposed Project Location ..... 3
  - Orientation map 1: General location ..... 3
- Map of proposed site and relevant area(s) ..... 4
  - Cadastral details of the proposed site ..... 4
  - Wind and Solar developments with an approved Environmental Authorisation or applications under consideration within 30 km of the proposed area ..... 5
  - Environmental Management Frameworks relevant to the application ..... 5
- Environmental screening results and assessment outcomes ..... 5
  - Relevant development incentives, restrictions, exclusions or prohibitions ..... 5
- Map indicating proposed development footprint within applicable development incentive, restriction, exclusion or prohibition zones ..... 6
  - Proposed Development Area Environmental Sensitivity ..... 6
  - Specialist assessments identified ..... 7
- Results of the environmental sensitivity of the proposed area ..... 9
  - MAP OF RELATIVE AGRICULTURE THEME SENSITIVITY ..... 9
  - MAP OF RELATIVE ANIMAL SPECIES THEME SENSITIVITY ..... 10
  - MAP OF RELATIVE AQUATIC BIODIVERSITY THEME SENSITIVITY ..... 11
  - MAP OF RELATIVE ARCHAEOLOGICAL AND CULTURAL HERITAGE THEME SENSITIVITY ..... 12
  - MAP OF RELATIVE CIVIL AVIATION THEME SENSITIVITY ..... 13
  - MAP OF RELATIVE DEFENCE THEME SENSITIVITY ..... 14
  - MAP OF RELATIVE PALEONTOLOGY THEME SENSITIVITY ..... 15
  - MAP OF RELATIVE PLANT SPECIES THEME SENSITIVITY ..... 16
  - MAP OF RELATIVE TERRESTRIAL BIODIVERSITY THEME SENSITIVITY ..... 17

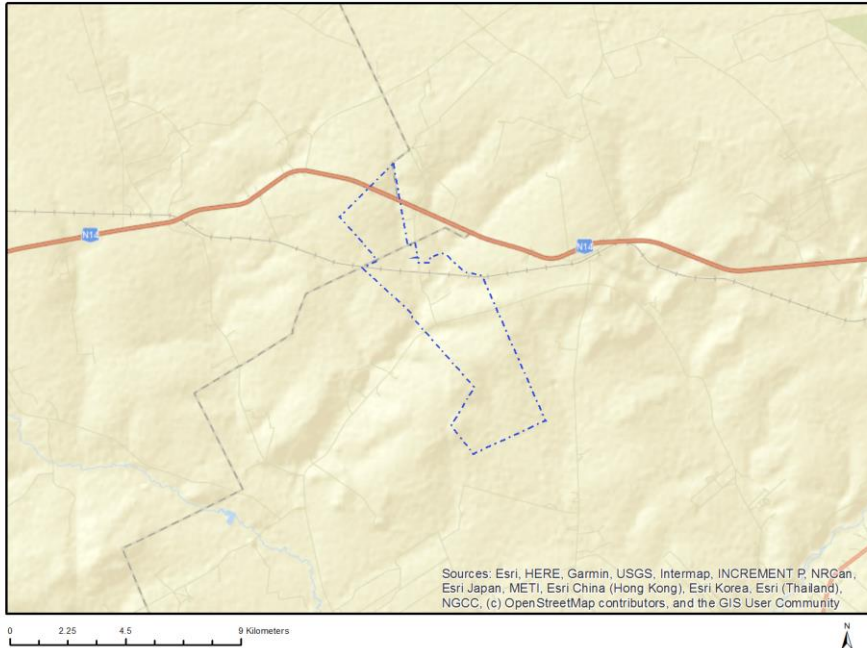
# Proposed Project Location

## Orientation map 1: General location

### General Orientation: EIA642PR - CTN Mining - Farm Rooipoort 202 & Wildfontein 201



## Map of proposed site and relevant area(s)



## Cadastral details of the proposed site

Property details:

No	Farm Name	Farm/ Erf No	Portion	Latitude	Longitude	Property Type
1	WILDFONTEIN	201	0	26°18'4.96S	26°30'38.64E	Farm
2	WITKLIP	215	0	26°24'6.84S	26°38'48E	Farm
3	MAKOKSKRAAL	203	0	26°21'5.68S	26°37'37.18E	Farm
4	GRUISPAN	217	0	26°25'32.97S	26°35'43.03E	Farm
5	ROOIKRAAL	501	0	26°20'2.38S	26°33'46.19E	Farm
6	MAKOKSKRAAL	468	0	26°19'57.93S	26°35'42.73E	Farm
7	KOPPIESKRAAL	500	0	26°19'33.21S	26°34'28.38E	Farm
8	ROOIPOORT	202	0	26°22'52.5S	26°33'43.87E	Farm
9	WILDFONTEIN	201	11	26°19'38.96S	26°32'47.99E	Farm Portion
10	ROOIPOORT	202	8	26°22'11.31S	26°34'48.24E	Farm Portion
11	WILDFONTEIN	201	20	26°19'29.27S	26°32'2.57E	Farm Portion
12	ROOIPOORT	202	9	26°20'58.97S	26°33'35.93E	Farm Portion
13	ROOIPOORT	202	0	26°20'41.36S	26°33'51.1E	Farm Portion
14	MAKOKSKRAAL	203	26	26°21'59.56S	26°35'54.78E	Farm Portion
15	WITKLIP	215	5	26°24'28.94S	26°37'3.94E	Farm Portion
16	MAKOKSKRAAL	468	1	26°20'54.73S	26°35'44.62E	Farm Portion
17	ROOIKRAAL	501	0	26°20'10.89S	26°33'49.31E	Farm Portion
18	ROOIPOORT	202	10	26°20'37.43S	26°33'51.35E	Farm Portion
19	ROOIPOORT	202	12	26°21'19.25S	26°34'25.88E	Farm Portion
20	MAKOKSKRAAL	203	46	26°20'59.91S	26°35'5.07E	Farm Portion
21	GRUISPAN	217	19	26°24'7.06S	26°35'39.99E	Farm Portion
22	WILDFONTEIN	201	19	26°18'58.28S	26°32'39.96E	Farm Portion
23	WILDFONTEIN	201	29	26°19'26.38S	26°33'2.77E	Farm Portion
24	KOPPIESKRAAL	500	0	26°19'29.75S	26°34'0.79E	Farm Portion
25	WILDFONTEIN	201	0	26°20'6.18S	26°31'57.81E	Farm Portion
26	ROOIPOORT	202	2	26°20'29.41S	26°34'30.33E	Farm Portion
27	ROOIPOORT	202	5	26°23'34.39S	26°33'43.9E	Farm Portion
28	MAKOKSKRAAL	203	27	26°21'32.61S	26°35'43.95E	Farm Portion

29	WILDFONTEIN	201	28	26°19'16.92S	26°32'38.46E	Farm Portion
30	ROOIPOORT	202	7	26°23'29.15S	26°35'23.18E	Farm Portion
31	KOPPIESKRAAL	500	1	26°19'47.48S	26°33'56.21E	Farm Portion
32	WILDFONTEIN	201	15	26°20'16.85S	26°33'0.81E	Farm Portion
33	ROOIPOORT	202	6	26°22'22.71S	26°33'43.21E	Farm Portion
34	MAKOKSKRAAL	203	18	26°21'11.28S	26°36'2.69E	Farm Portion
35	MAKOKSKRAAL	203	19	26°22'47.04S	26°36'31.09E	Farm Portion
36	ROOIKRAAL	501	1	26°19'48S	26°33'55.95E	Farm Portion

Development footprint<sup>1</sup> vertices:  
No development footprint(s) specified.

### Wind and Solar developments with an approved Environmental Authorisation or applications under consideration within 30 km of the proposed area

No nearby wind or solar developments found.

### Environmental Management Frameworks relevant to the application

No intersections with EMF areas found.

### Environmental screening results and assessment outcomes

The following sections contain a summary of any development incentives, restrictions, exclusions or prohibitions that apply to the proposed development site as well as the most environmental sensitive features on the site based on the site sensitivity screening results for the application classification that was selected. The application classification selected for this report is:

**Mining | Prospecting rights.**

### Relevant development incentives, restrictions, exclusions or prohibitions

The following development incentives, restrictions, exclusions or prohibitions and their implications that apply to this site are indicated below.

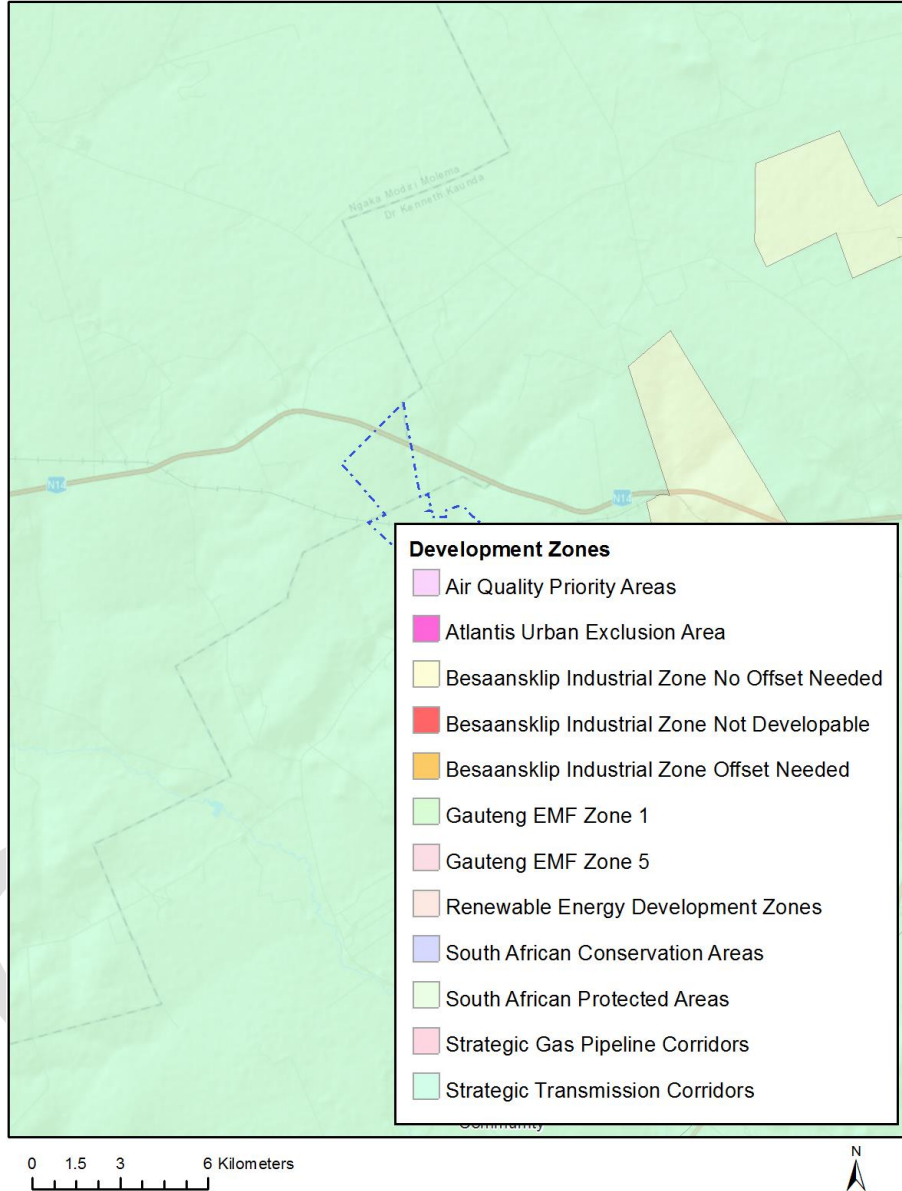
Incentive, restriction or prohibition	Implication
Strategic Transmission	<a href="https://screening.environment.gov.za/ScreeningDownloads/DevelopmentZones/Combined_EGI.pdf">https://screening.environment.gov.za/ScreeningDownloads/DevelopmentZones/Combined_EGI.pdf</a>

<sup>1</sup> “development footprint”, means the area within the site on which the development will take place and includes all ancillary developments for example roads, power lines, boundary walls, paving etc. which require vegetation clearance or which will be disturbed and for which the application has been submitted.

Corridor- Northern corridor	
-----------------------------------	--

Map indicating proposed development footprint within applicable development incentive, restriction, exclusion or prohibition zones

Project Location: EIA642PR - CTN Mining - Farm Rooipoort 202 & Wildfontein 201



**Proposed Development Area Environmental Sensitivity**

The following summary of the development site environmental sensitivities is identified. Only the highest environmental sensitivity is indicated. The footprint environmental sensitivities for the proposed development footprint as identified, are indicative only and must be verified on site by a suitably qualified person before the specialist assessments identified below can be confirmed.

Theme	Very High sensitivity	High sensitivity	Medium sensitivity	Low sensitivity
Agriculture Theme		X		
Animal Species Theme			X	
Aquatic Biodiversity Theme	X			
Archaeological and Cultural Heritage Theme				X
Civil Aviation Theme				X
Defence Theme				X
Paleontology Theme			X	
Plant Species Theme			X	
Terrestrial Biodiversity Theme	X			

### Specialist assessments identified

Based on the selected classification, and the environmental sensitivities of the proposed development footprint, the following list of specialist assessments have been identified for inclusion in the assessment report. It is the responsibility of the EAP to confirm this list and to motivate in the assessment report, the reason for not including any of the identified specialist study including the provision of photographic evidence of the site situation.

N o	Specialist assessment	Assessment Protocol
1	Agricultural Impact Assessment	<a href="https://screening.environment.gov.za/ScreeningDownloads/AssessmentProtocols/Gazetted%20General%20Agriculture%20Assessment%20Protocols.pdf">https://screening.environment.gov.za/ScreeningDownloads/AssessmentProtocols/Gazetted General Agriculture Assessment Protocols.pdf</a>
2	Archaeological and Cultural Heritage Impact Assessment	<a href="https://screening.environment.gov.za/ScreeningDownloads/AssessmentProtocols/Gazetted%20General%20Requirement%20Assessment%20Protocols.pdf">https://screening.environment.gov.za/ScreeningDownloads/AssessmentProtocols/Gazetted General Requirement Assessment Protocols.pdf</a>
3	Palaeontology Impact Assessment	<a href="https://screening.environment.gov.za/ScreeningDownloads/AssessmentProtocols/Gazetted%20General%20Requirement%20Assessment%20Protocols.pdf">https://screening.environment.gov.za/ScreeningDownloads/AssessmentProtocols/Gazetted General Requirement Assessment Protocols.pdf</a>
4	Terrestrial Biodiversity Impact Assessment	<a href="https://screening.environment.gov.za/ScreeningDownloads/AssessmentProtocols/Gazetted%20Terrestrial%20Biodiversity%20Assessment%20Protocols.pdf">https://screening.environment.gov.za/ScreeningDownloads/AssessmentProtocols/Gazetted Terrestrial Biodiversity Assessment Protocols.pdf</a>
5	Aquatic Biodiversity Impact	<a href="https://screening.environment.gov.za/ScreeningDownloads/AssessmentProtocols/Gazetted%20Aquatic%20Biodiversity%20Assessment%20Protocols.pdf">https://screening.environment.gov.za/ScreeningDownloads/AssessmentProtocols/Gazetted Aquatic Biodiversity Assessment Protocols.pdf</a>



	Assessment	
6	Noise Impact Assessment	<a href="https://screening.environment.gov.za/ScreeningDownloads/AssessmentProtocols/Gazetted_Noise_Impacts_Assessment_Protocol.pdf">https://screening.environment.gov.za/ScreeningDownloads/AssessmentProtocols/Gazetted_Noise_Impacts_Assessment_Protocol.pdf</a>
7	Radioactivity Impact Assessment	<a href="https://screening.environment.gov.za/ScreeningDownloads/AssessmentProtocols/Gazetted_General_Requirement_Assessment_Protocols.pdf">https://screening.environment.gov.za/ScreeningDownloads/AssessmentProtocols/Gazetted_General_Requirement_Assessment_Protocols.pdf</a>
8	Plant Species Assessment	<a href="https://screening.environment.gov.za/ScreeningDownloads/AssessmentProtocols/Gazetted_Plant_Species_Assessment_Protocols.pdf">https://screening.environment.gov.za/ScreeningDownloads/AssessmentProtocols/Gazetted_Plant_Species_Assessment_Protocols.pdf</a>
9	Animal Species Assessment	<a href="https://screening.environment.gov.za/ScreeningDownloads/AssessmentProtocols/Gazetted_Animal_Species_Assessment_Protocols.pdf">https://screening.environment.gov.za/ScreeningDownloads/AssessmentProtocols/Gazetted_Animal_Species_Assessment_Protocols.pdf</a>

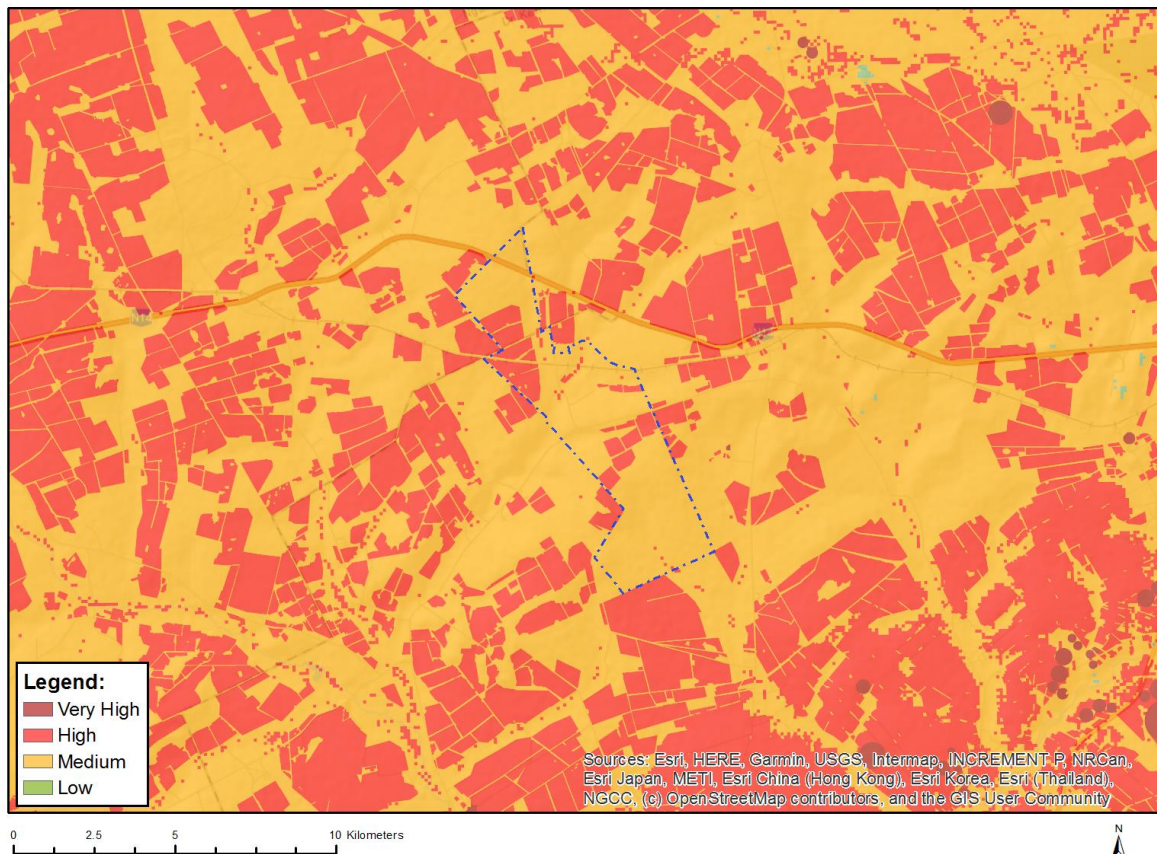
OFFICIAL



## Results of the environmental sensitivity of the proposed area.

The following section represents the results of the screening for environmental sensitivity of the proposed site for relevant environmental themes associated with the project classification. It is the duty of the EAP to ensure that the environmental themes provided by the screening tool are comprehensive and complete for the project. Refer to the disclaimer.

### MAP OF RELATIVE AGRICULTURE THEME SENSITIVITY

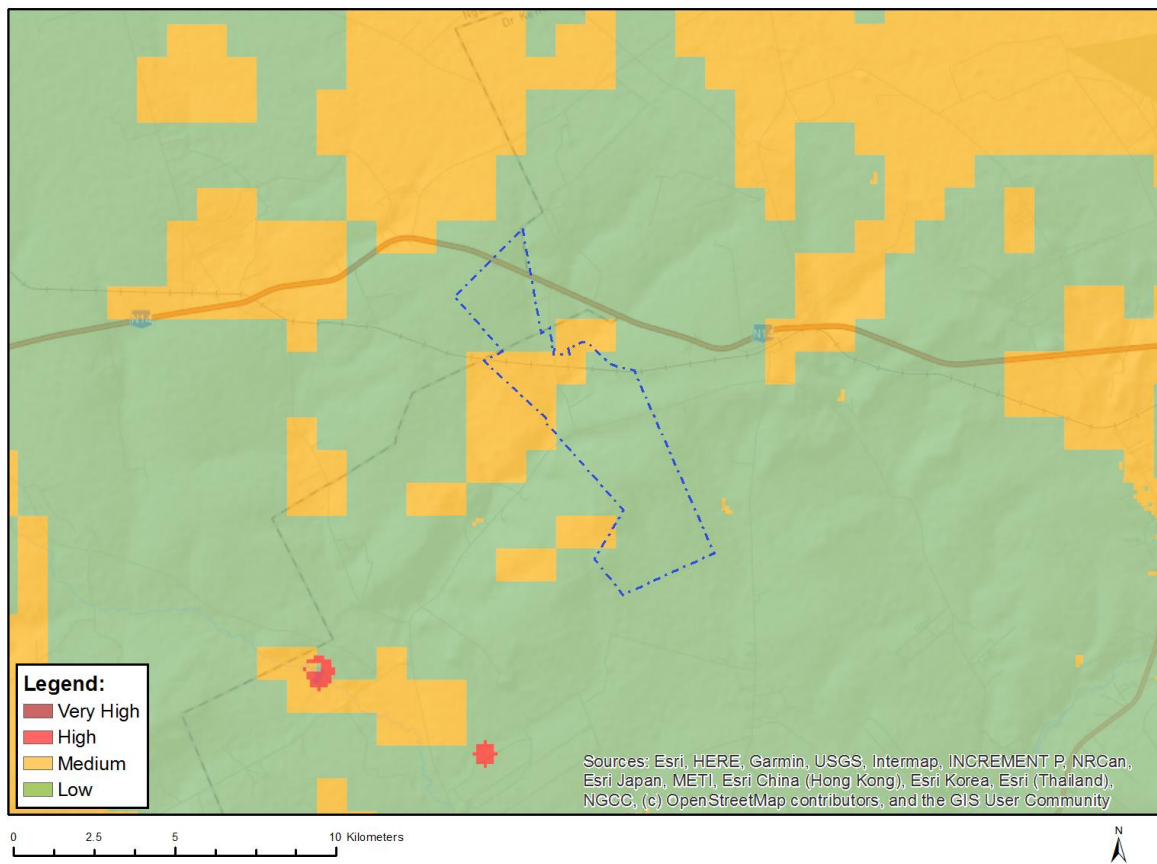


Very High sensitivity	High sensitivity	Medium sensitivity	Low sensitivity
	X		

#### Sensitivity Features:

Sensitivity	Feature(s)
High	Land capability;09. Moderate-High/10. Moderate-High
High	Annual Crop Cultivation / Planted Pastures Rotation;Land capability;06. Low-Moderate/07. Low-Moderate/08. Moderate
High	Annual Crop Cultivation / Planted Pastures Rotation;Land capability;09. Moderate-High/10. Moderate-High
Medium	Land capability;06. Low-Moderate/07. Low-Moderate/08. Moderate

## MAP OF RELATIVE ANIMAL SPECIES THEME SENSITIVITY



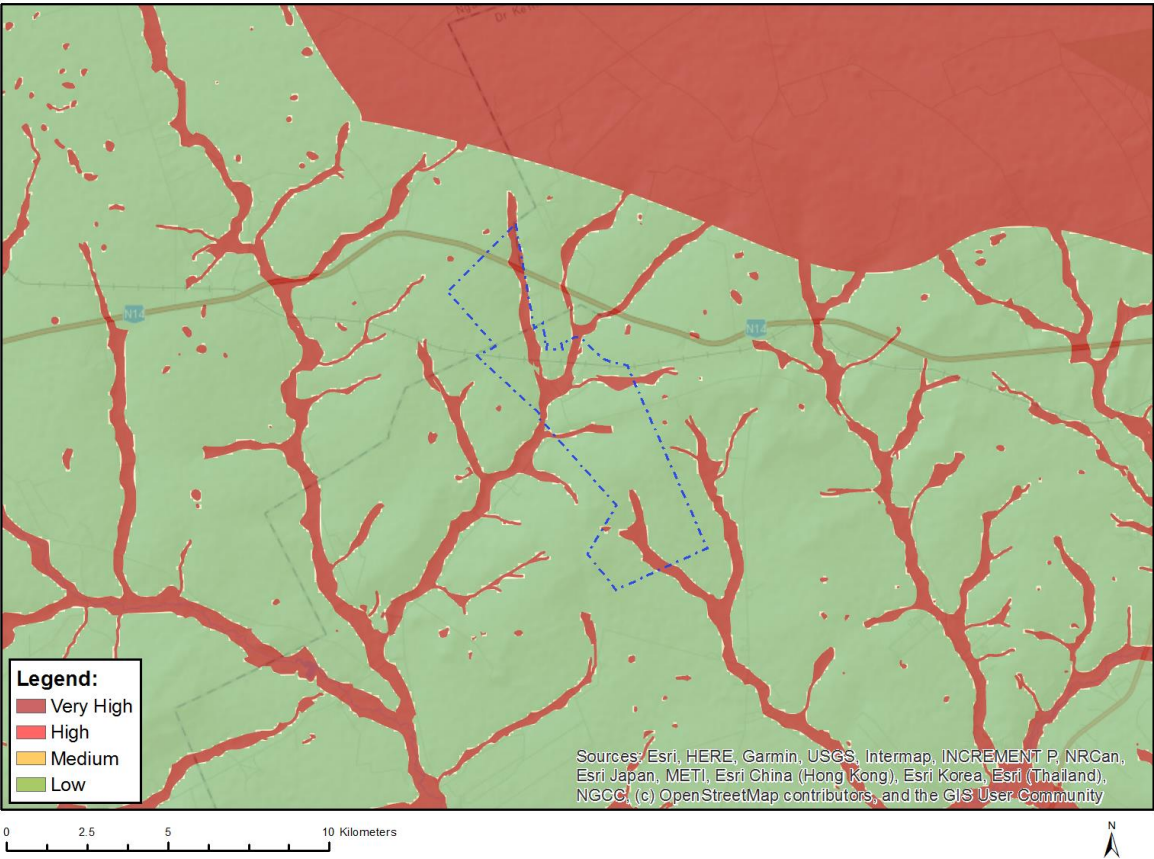
Where only a sensitive plant unique number or sensitive animal unique number is provided in the screening report and an assessment is required, the environmental assessment practitioner (EAP) or specialist is required to email SANBI at [eiadatarequests@sanbi.org.za](mailto:eiadatarequests@sanbi.org.za) listing all sensitive species with their unique identifiers for which information is required. The name has been withheld as the species may be prone to illegal harvesting and must be protected. SANBI will release the actual species name after the details of the EAP or specialist have been documented.

Very High sensitivity	High sensitivity	Medium sensitivity	Low sensitivity
		X	

### Sensitivity Features:

Sensitivity	Feature(s)
Low	Subject to confirmation
Medium	Aves-Hydroprogne caspia
Medium	Mammalia-Crocidura maquassiensis

MAP OF RELATIVE AQUATIC BIODIVERSITY THEME SENSITIVITY

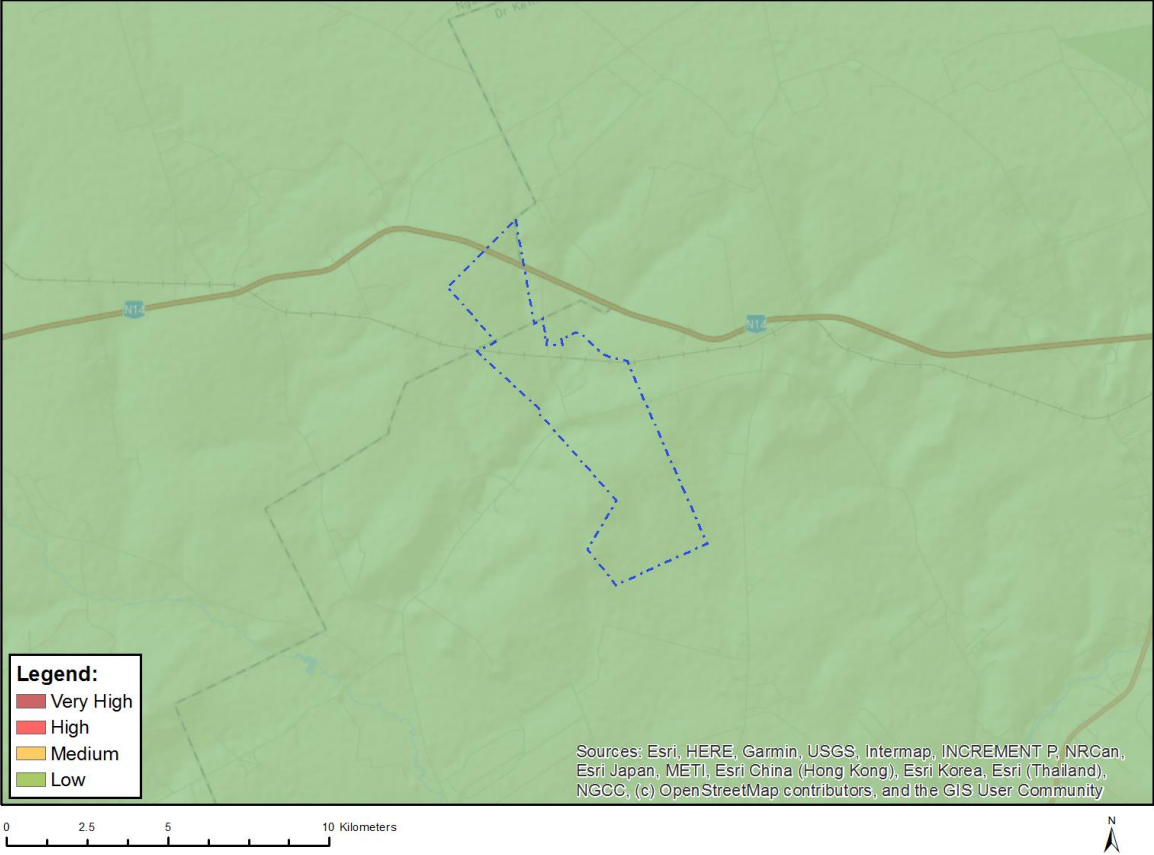


Very High sensitivity	High sensitivity	Medium sensitivity	Low sensitivity
X			

Sensitivity Features:

Sensitivity	Feature(s)
Low	Low sensitivity
Very High	Aquatic CBAs
Very High	Wetlands and Estuaries

# MAP OF RELATIVE ARCHAEOLOGICAL AND CULTURAL HERITAGE THEME SENSITIVITY



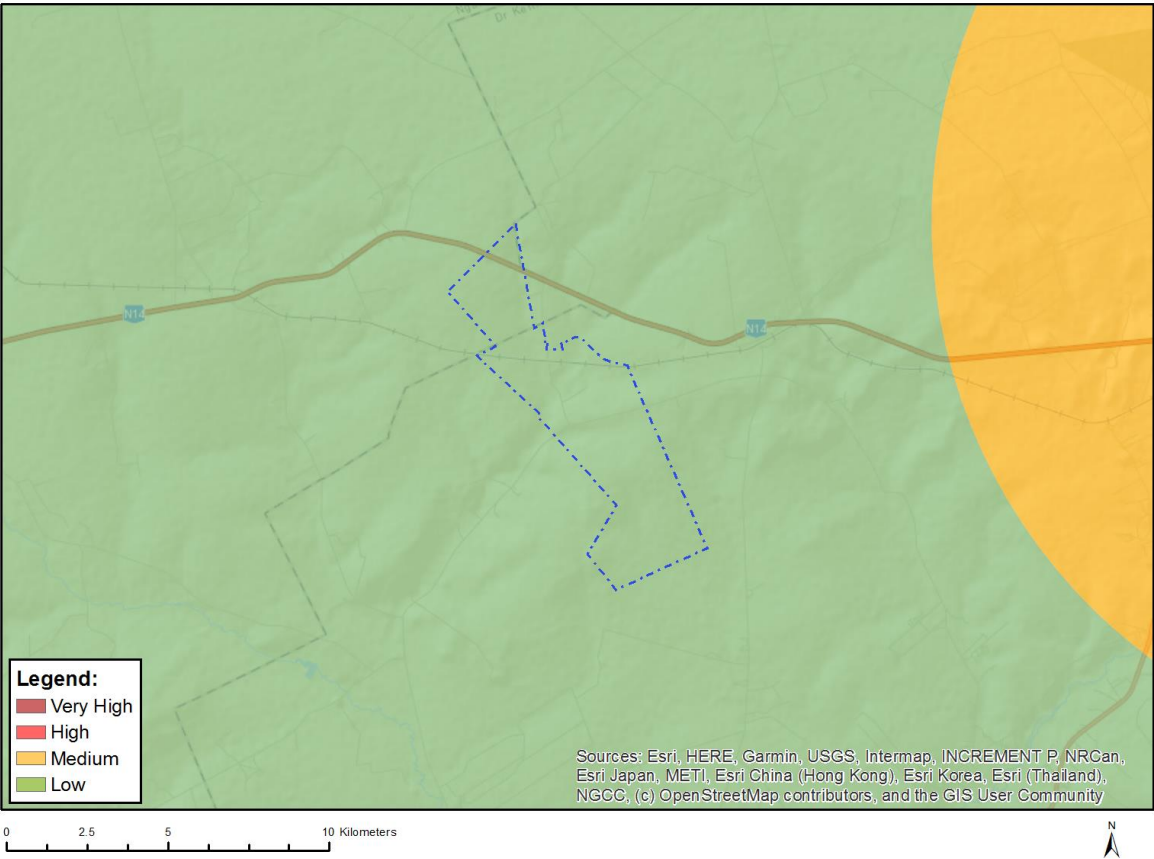
Very High sensitivity	High sensitivity	Medium sensitivity	Low sensitivity
			X

**Sensitivity Features:**

Sensitivity	Feature(s)
Low	Low sensitivity



MAP OF RELATIVE CIVIL AVIATION THEME SENSITIVITY

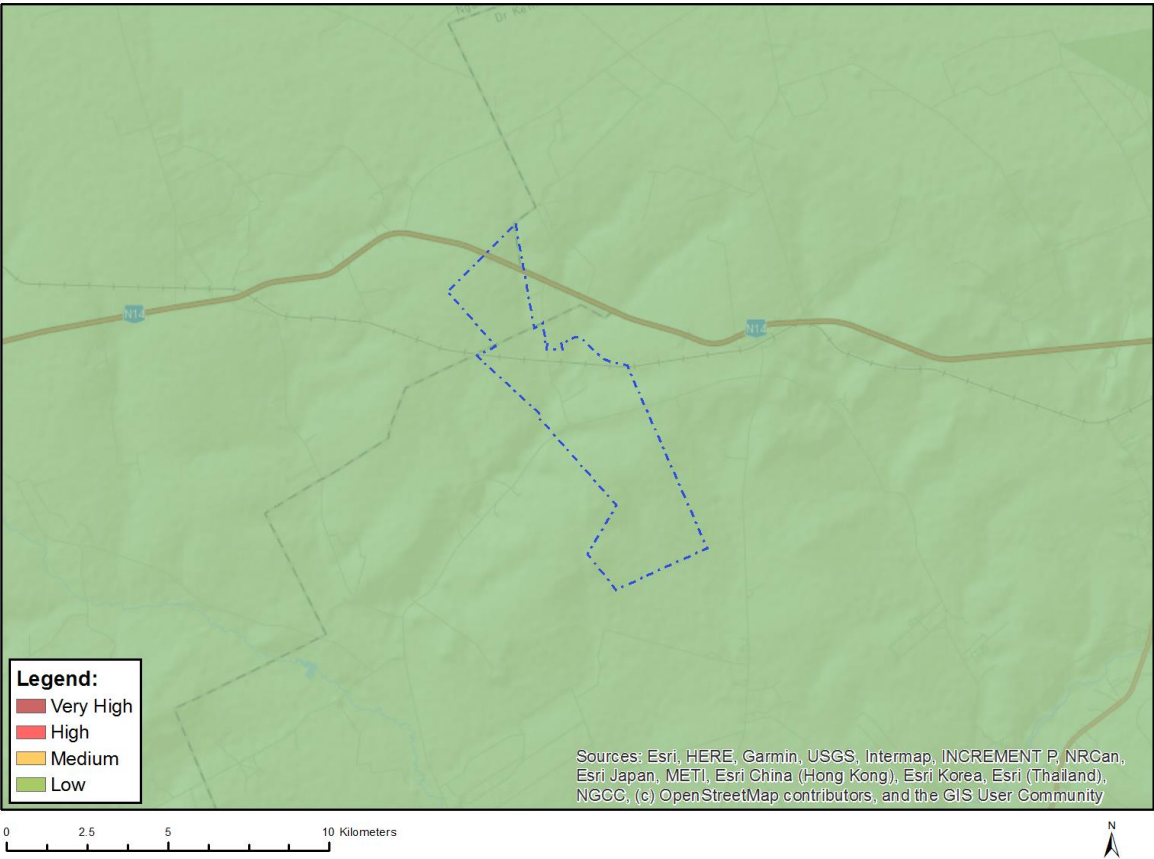


Very High sensitivity	High sensitivity	Medium sensitivity	Low sensitivity
			X

Sensitivity Features:

Sensitivity	Feature(s)
Low	Low sensitivity

# MAP OF RELATIVE DEFENCE THEME SENSITIVITY

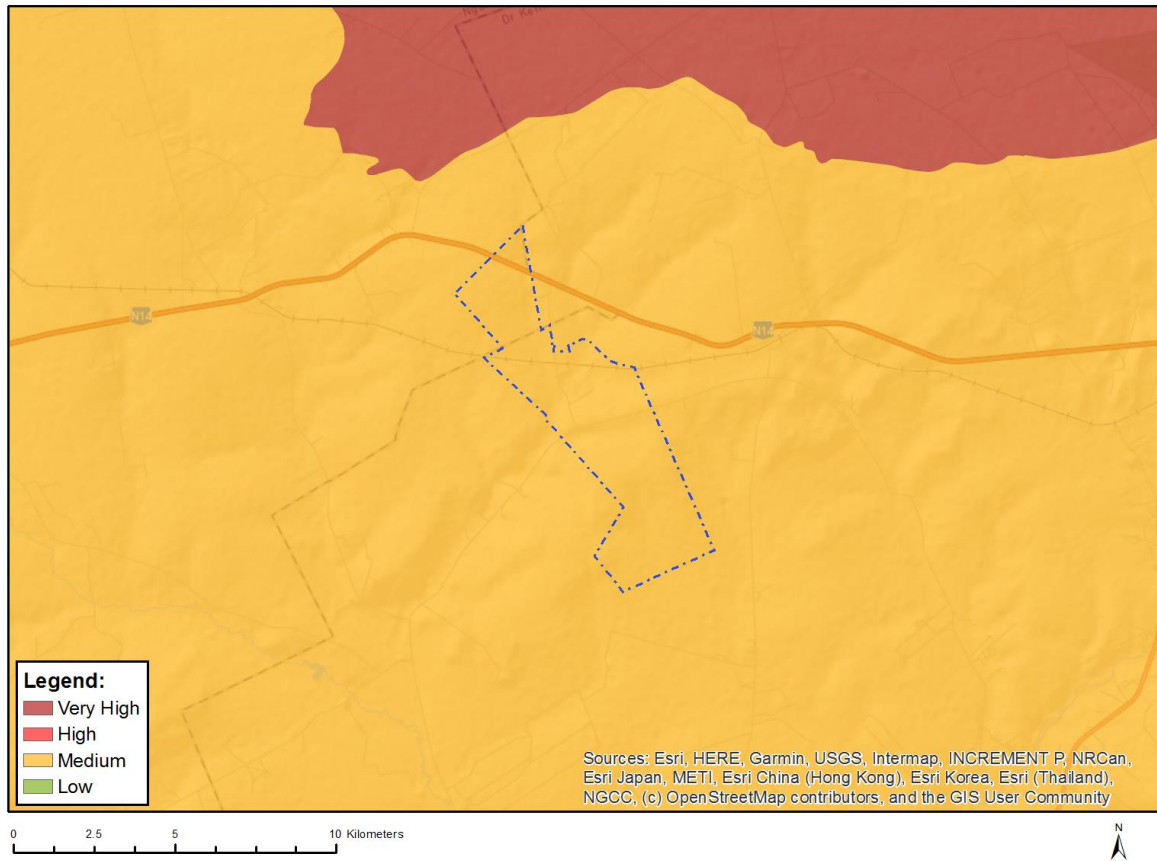


Very High sensitivity	High sensitivity	Medium sensitivity	Low sensitivity
			X

**Sensitivity Features:**

Sensitivity	Feature(s)
Low	Low Sensitivity

## MAP OF RELATIVE PALEONTOLOGY THEME SENSITIVITY



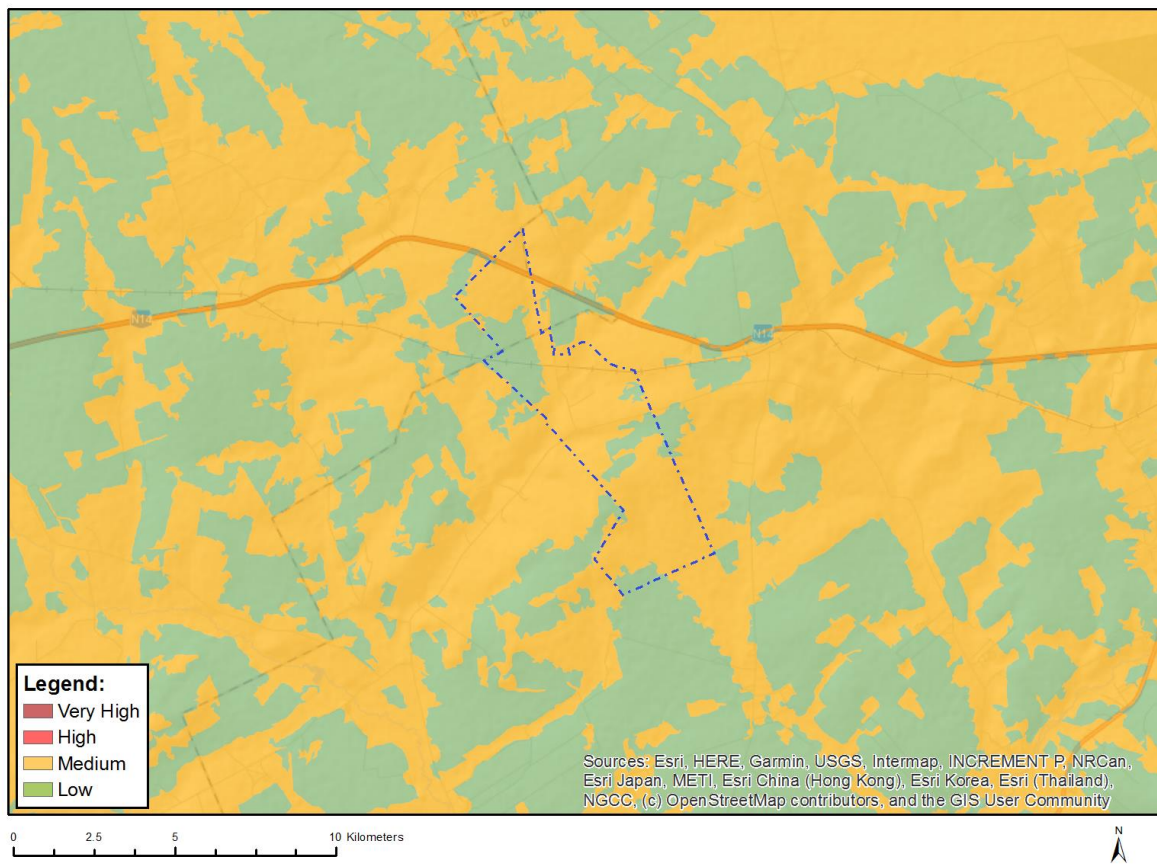
Very High sensitivity	High sensitivity	Medium sensitivity	Low sensitivity
		X	

### Sensitivity Features:

Sensitivity	Feature(s)
Low	Features with a Low paleontological sensitivity
Medium	Features with a Medium paleontological sensitivity



## MAP OF RELATIVE PLANT SPECIES THEME SENSITIVITY



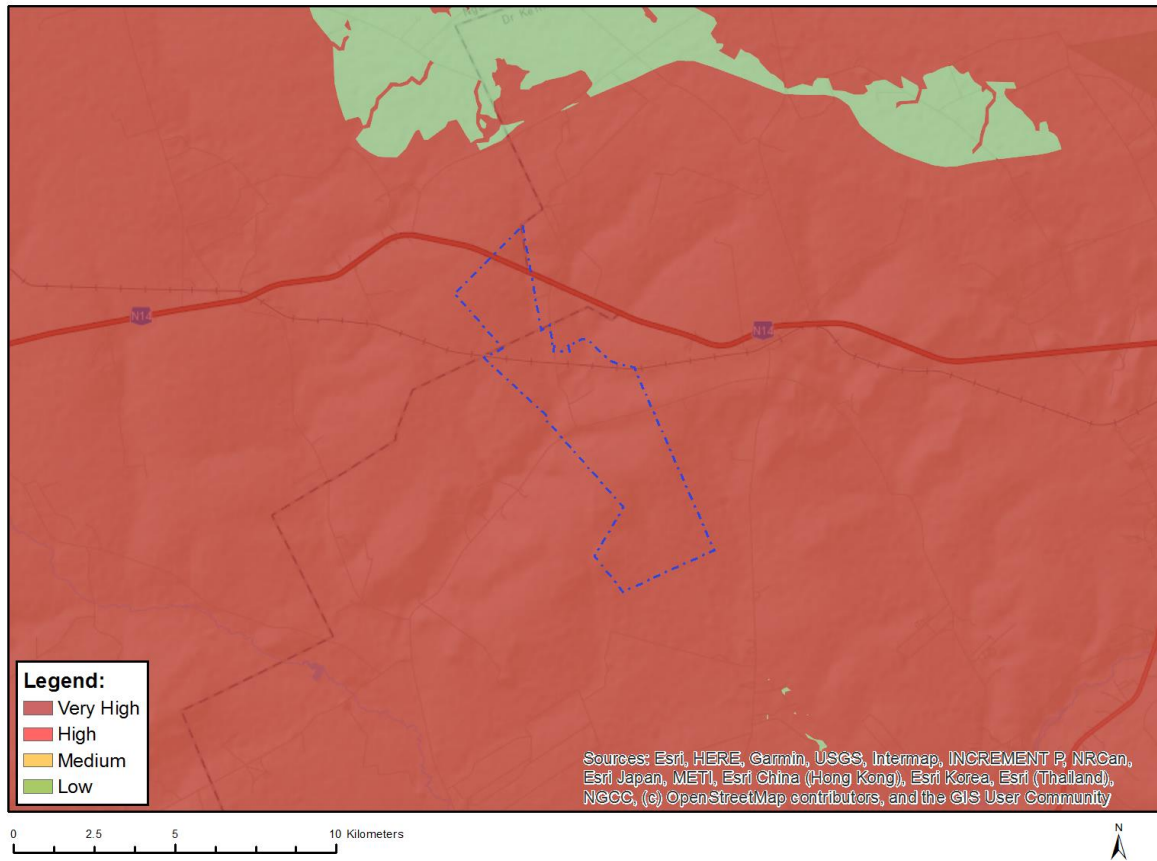
Where only a sensitive plant unique number or sensitive animal unique number is provided in the screening report and an assessment is required, the environmental assessment practitioner (EAP) or specialist is required to email SANBI at [eiadatarequests@sanbi.org.za](mailto:eiadatarequests@sanbi.org.za) listing all sensitive species with their unique identifiers for which information is required. The name has been withheld as the species may be prone to illegal harvesting and must be protected. SANBI will release the actual species name after the details of the EAP or specialist have been documented.

Very High sensitivity	High sensitivity	Medium sensitivity	Low sensitivity
		X	

### Sensitivity Features:

Sensitivity	Feature(s)
Low	Low Sensitivity
Medium	Sensitive species 1261

## MAP OF RELATIVE TERRESTRIAL BIODIVERSITY THEME SENSITIVITY



Very High sensitivity	High sensitivity	Medium sensitivity	Low sensitivity
X			

### Sensitivity Features:

Sensitivity	Feature(s)
Very High	Critical biodiversity area 1
Very High	Ecological support area 2
Very High	Protected Areas Expansion Strategy
Very High	Endangered ecosystem