

**SCREENING REPORT FOR AN ENVIRONMENTAL AUTHORIZATION AS
REQUIRED BY THE 2014 EIA REGULATIONS – PROPOSED SITE
ENVIRONMENTAL SENSITIVITY**

EIA Reference number: LP 30/5/1/1/2/ 14407 PR

Project name: Prospecting right application on farms Koedoeskop 408 KS, Matabata's location 306 KS, Plaats 304 KS, Ongegund 302 KS and Haakdoornhoek 409 KS

Project title: Prospecting right application

Date screening report generated: 21/04/2022 12:25:08

Applicant: Setleng Mining (Pty) Ltd

Compiler: TPR Mining Resources (Pty) Ltd

Compiler signature:
.....

Application Category: Mining|Prospecting rights

Table of Contents

Proposed Project Location	3
Orientation map 1: General location	3
Map of proposed site and relevant area(s)	4
Cadastral details of the proposed site	4
Wind and Solar developments with an approved Environmental Authorisation or applications under consideration within 30 km of the proposed area	5
Environmental Management Frameworks relevant to the application	6
Environmental screening results and assessment outcomes	6
Relevant development incentives, restrictions, exclusions or prohibitions	6
Map indicating proposed development footprint within applicable development incentive, restriction, exclusion or prohibition zones	8
Proposed Development Area Environmental Sensitivity	8
Specialist assessments identified	9
Results of the environmental sensitivity of the proposed area	11
MAP OF RELATIVE AGRICULTURE THEME SENSITIVITY	11
MAP OF RELATIVE ANIMAL SPECIES THEME SENSITIVITY	12
MAP OF RELATIVE AQUATIC BIODIVERSITY THEME SENSITIVITY	13
MAP OF RELATIVE ARCHAEOLOGICAL AND CULTURAL HERITAGE THEME SENSITIVITY	14
MAP OF RELATIVE CIVIL AVIATION THEME SENSITIVITY	15
MAP OF RELATIVE DEFENCE THEME SENSITIVITY	16
MAP OF RELATIVE PALEONTOLOGY THEME SENSITIVITY	17
MAP OF RELATIVE PLANT SPECIES THEME SENSITIVITY	18
MAP OF RELATIVE TERRESTRIAL BIODIVERSITY THEME SENSITIVITY	19

Proposed Project Location

Orientation map 1: General location

General Orientation: Prospecting right application on farms Koedoeskop 408 KS, Matabata's location 306 KS, Plaats 304 KS, Ongegund 302 KS and Haakdoornhoek 409 KS



Map of proposed site and relevant area(s)



Cadastral details of the proposed site

Property details:

No	Farm Name	Farm/ Erf No	Portion	Latitude	Longitude	Property Type
1	MATABATA'S LOCATION	306	0	24°13'24.69S	29°51'21.47E	Farm
2	ONGEGUND	302	0	24°12'7.99S	29°53'36.91E	Farm
3	VOORSPOED	305	0	24°11'34.46S	29°52'25.46E	Farm
4	GROOTFONTEIN	297	0	24°12'52.99S	29°55'39.99E	Farm
5		261	0	24°11'36.05S	29°51'7.41E	Farm
6	KLEINGELUK	301	0	24°11'30.04S	29°53'25.48E	Farm
7	INKOMST	308	0	24°13'38.91S	29°48'51.56E	Farm
8	HAAKDOORNHOEK	409	0	24°13'54.8S	29°54'1.02E	Farm
9	KOEDOESKOP	408	0	24°14'4.89S	29°50'1.13E	Farm
10	JAGDLUST	418	0	24°15'26.55S	29°52'48.48E	Farm
11	EBENHAEZER	303	0	24°12'50.73S	29°53'11.43E	Farm
12	PLAATS	304	0	24°12'51.45S	29°52'29.52E	Farm
13	SCHEIDING	407	0	24°14'39.87S	29°48'11.75E	Farm
14	UITRECHT	299	0	24°12'4.92S	29°54'20.98E	Farm
15	GROOTFONTEIN	297	0	24°12'52.99S	29°55'39.99E	Farm Portion
16	EBENHAEZER	303	0	24°12'50.73S	29°53'11.43E	Farm Portion
17	MATABATA'S LOCATION	306	0	24°13'31.86S	29°51'22.17E	Farm Portion
18	ONGEGUND	302	0	24°12'7.99S	29°53'36.91E	Farm Portion
19	KOEDOESKOP	408	5	24°13'42.35S	29°49'41.04E	Farm Portion
20	KOEDOESKOP	408	1	24°13'23.86S	29°49'49.76E	Farm Portion
21	UITRECHT	299	0	24°12'4.92S	29°54'20.98E	Farm Portion
22	INKOMST	308	0	24°13'38.91S	29°48'51.56E	Farm Portion
23	KOEDOESKOP	408	2	24°14'17.75S	29°49'52.49E	Farm Portion
24	PLAATS	304	0	24°12'51.45S	29°52'29.52E	Farm Portion

25	VOORSPOED	305	0	24°11'15.55S	29°52'23.32E	Farm Portion
26	INKOMST	308	0	24°13'38.91S	29°48'51.56E	Farm Portion
27	SCHEIDING	407	1	24°14'28.7S	29°48'18.18E	Farm Portion
28		261	0	24°11'36.05S	29°51'7.41E	Farm Portion
29	KOEDOESKOP	408	3	24°14'53.04S	29°49'59.5E	Farm Portion
30	JAGDLUST	418	0	24°15'25.7S	29°52'9.17E	Farm Portion
31	KOEDOESKOP	408	4	24°13'36.09S	29°49'37.91E	Farm Portion
32	KOEDOESKOP	408	2	24°14'12.09S	29°50'14.44E	Farm Portion
33	HAAKDOORNHOEK	409	0	24°13'54.8S	29°54'1.02E	Farm Portion
34	JAGDLUST	418	1	24°14'52.8S	29°53'41.66E	Farm Portion
35	KLEINGELUK	301	0	24°11'30.04S	29°53'25.48E	Farm Portion
36	MATABATA'S LOCATION	306	1	24°12'46.12S	29°51'31.41E	Farm Portion

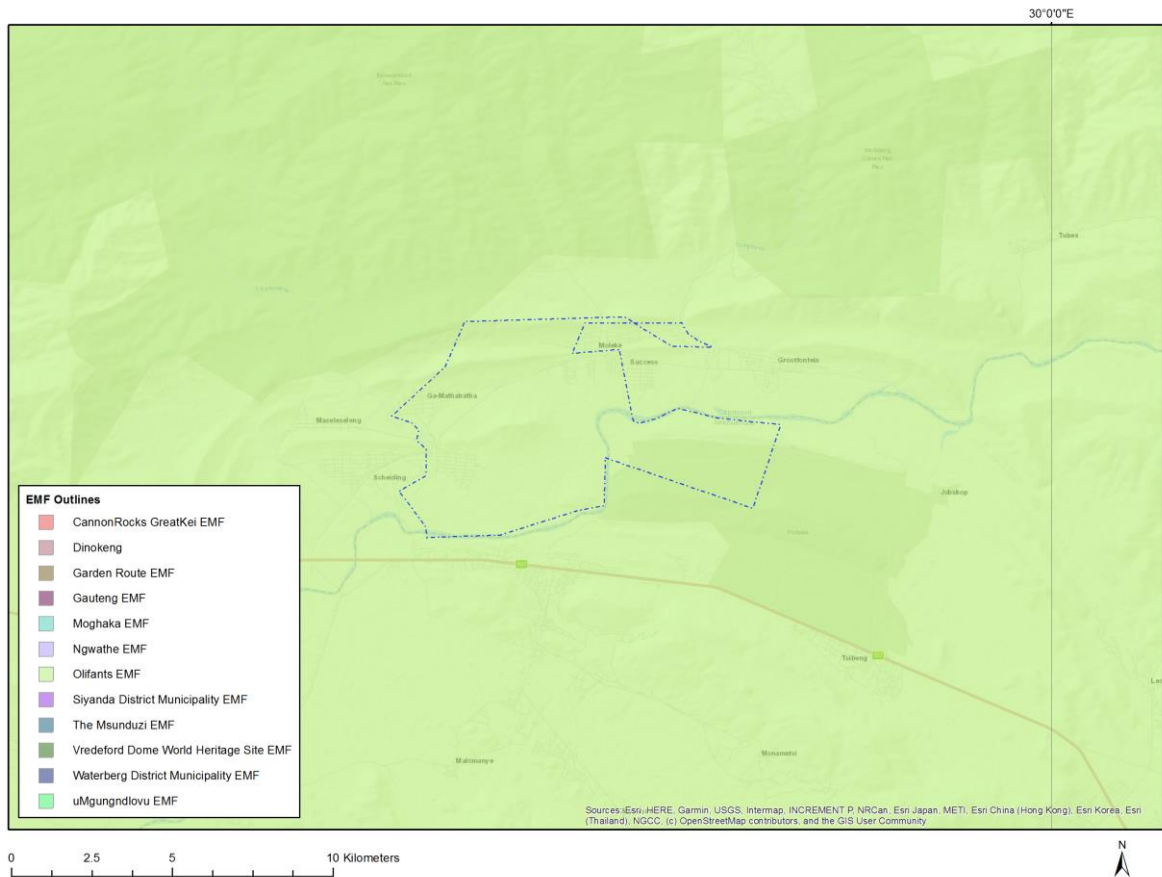
Development footprint¹ vertices:
No development footprint(s) specified.

Wind and Solar developments with an approved Environmental Authorisation or applications under consideration within 30 km of the proposed area

No nearby wind or solar developments found.

¹ "development footprint", means the area within the site on which the development will take place and includes all ancillary developments for example roads, power lines, boundary walls, paving etc. which require vegetation clearance or which will be disturbed and for which the application has been submitted.

Environmental Management Frameworks relevant to the application



Environmental Management Framework	LINK
Olifants EMF	https://screening.environment.gov.za/ScreeningDownloads/EMF/Zone 46, 67, 78, 80, 92, 103, 122, 129.pdf

Environmental screening results and assessment outcomes

The following sections contain a summary of any development incentives, restrictions, exclusions or prohibitions that apply to the proposed development site as well as the most environmental sensitive features on the site based on the site sensitivity screening results for the application classification that was selected. The application classification selected for this report is: **Mining | Prospecting rights.**

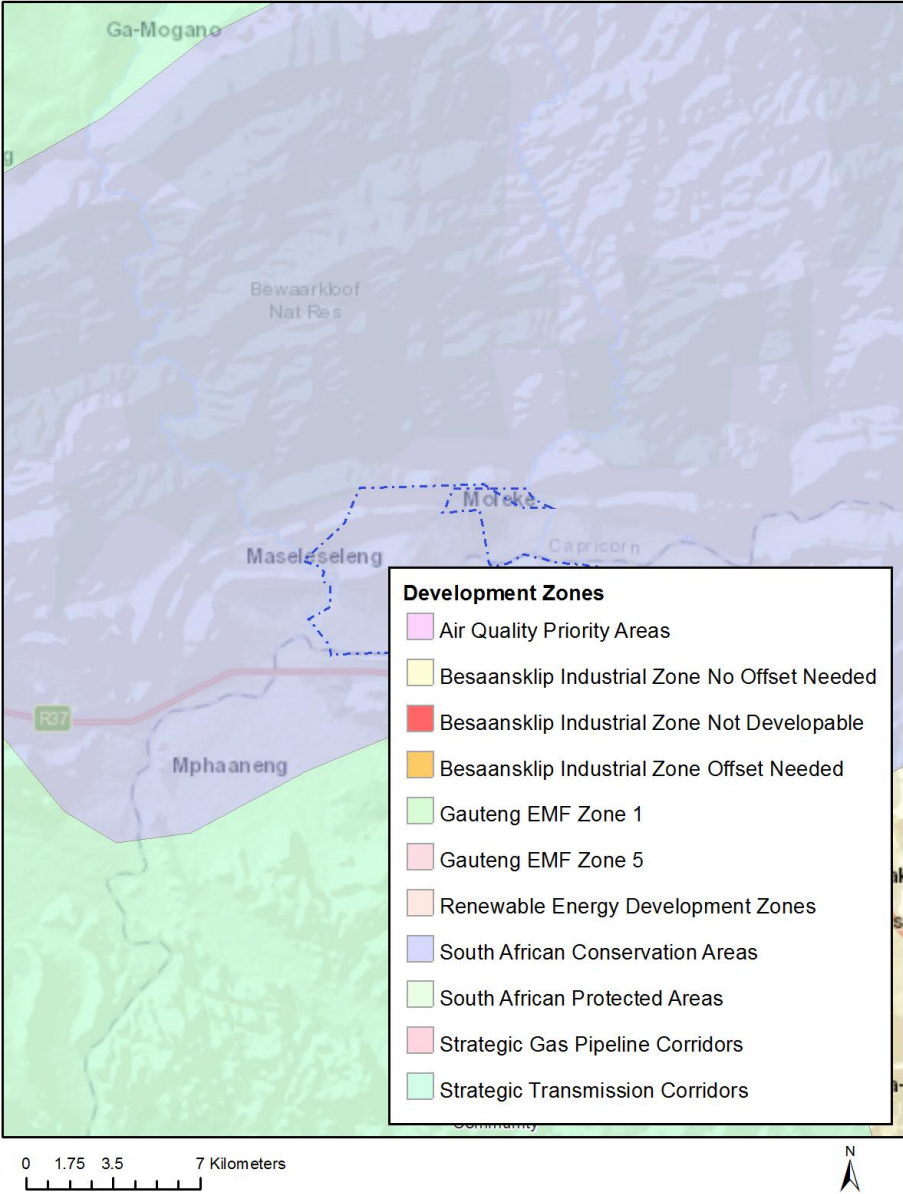
Relevant development incentives, restrictions, exclusions or prohibitions

The following development incentives, restrictions, exclusions or prohibitions and their implications that apply to this site are indicated below.

Incentive, restriction or prohibition	Implication
Strategic Transmission Corridor-International corridor	https://screening.environment.gov.za/ScreeningDownloads/DevelopmentZones/Combined_EGI.pdf
South African Protected Areas	https://screening.environment.gov.za/ScreeningDownloads/DevelopmentZones/SAPAD_OR_2021_Q3_Metadata.pdf
South African Conservation Areas	https://screening.environment.gov.za/ScreeningDownloads/DevelopmentZones/SACAD_OR_2021_Q3_Metadata.pdf

Map indicating proposed development footprint within applicable development incentive, restriction, exclusion or prohibition zones

Project Location: Prospecting right application on farms Koedoeskop 408 KS, Matabata's location 306 KS, Plaats 304 KS, Ongegund 302 KS and Haakdoornhoek 409 KS



Proposed Development Area Environmental Sensitivity

The following summary of the development site environmental sensitivities is identified. Only the highest environmental sensitivity is indicated. The footprint environmental sensitivities for the proposed development footprint as identified, are indicative only and must be verified on site by a suitably qualified person before the specialist assessments identified below can be confirmed.

Theme	Very High	High	Medium	Low
-------	-----------	------	--------	-----

	sensitivity	sensitivity	sensitivity	sensitivity
Agriculture Theme		X		
Animal Species Theme		X		
Aquatic Biodiversity Theme	X			
Archaeological and Cultural Heritage Theme				X
Civil Aviation Theme		X		
Defence Theme			X	
Paleontology Theme		X		
Plant Species Theme			X	
Terrestrial Biodiversity Theme	X			

Specialist assessments identified

Based on the selected classification, and the environmental sensitivities of the proposed development footprint, the following list of specialist assessments have been identified for inclusion in the assessment report. It is the responsibility of the EAP to confirm this list and to motivate in the assessment report, the reason for not including any of the identified specialist study including the provision of photographic evidence of the site situation.

N o	Specialist assessment	Assessment Protocol
1	Agricultural Impact Assessment	https://screening.environment.gov.za/ScreeningDownloads/AssessmentProtocols/Gazetted General Agriculture Assessment Protocols.pdf
2	Archaeological and Cultural Heritage Impact Assessment	https://screening.environment.gov.za/ScreeningDownloads/AssessmentProtocols/Gazetted General Requirement Assessment Protocols.pdf
3	Paleontology Impact Assessment	https://screening.environment.gov.za/ScreeningDownloads/AssessmentProtocols/Gazetted General Requirement Assessment Protocols.pdf
4	Terrestrial Biodiversity Impact Assessment	https://screening.environment.gov.za/ScreeningDownloads/AssessmentProtocols/Gazetted Terrestrial Biodiversity Assessment Protocols.pdf
5	Aquatic Biodiversity Impact Assessment	https://screening.environment.gov.za/ScreeningDownloads/AssessmentProtocols/Gazetted Aquatic Biodiversity Assessment Protocols.pdf

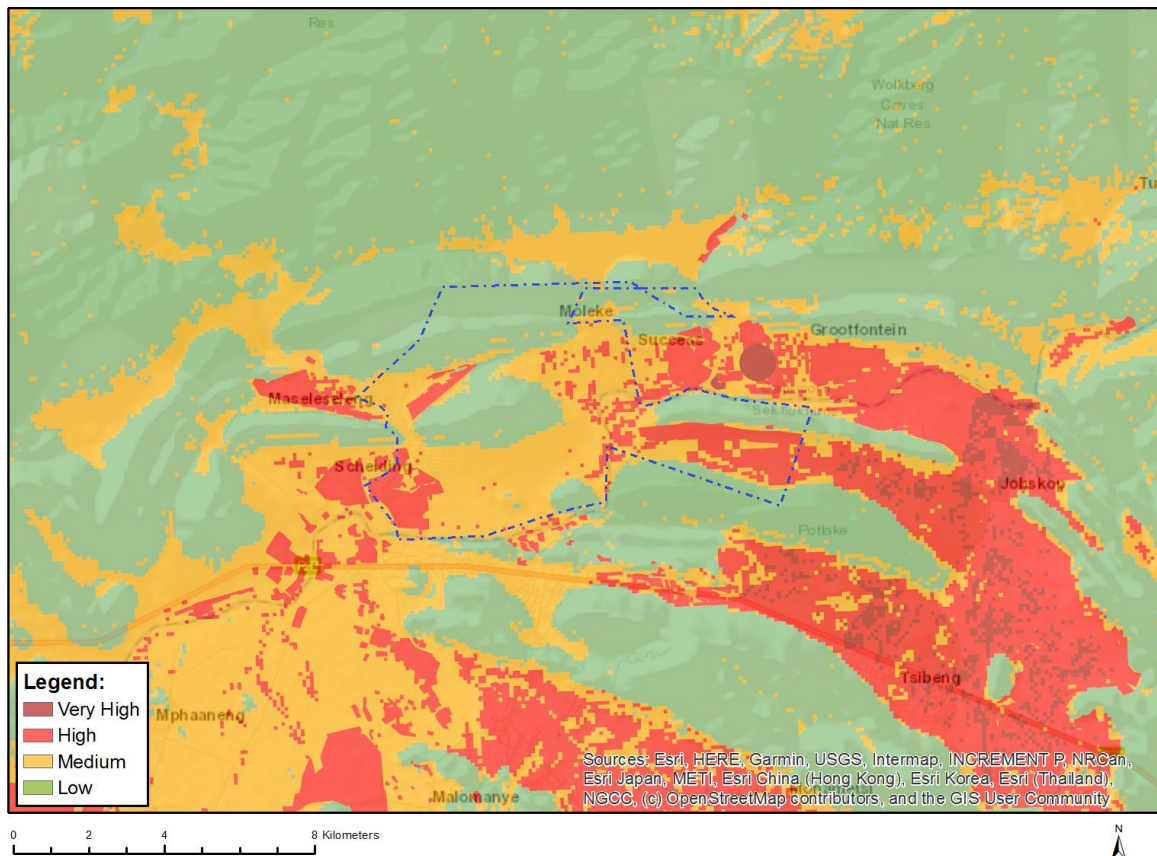
	ment	
6	Noise Impact Assessment	https://screening.environment.gov.za/ScreeningDownloads/AssessmentProtocols/Gazetted_Noise_Impacts_Assessment_Protocol.pdf
7	Radioactivity Impact Assessment	https://screening.environment.gov.za/ScreeningDownloads/AssessmentProtocols/Gazetted_General_Requirement_Assessment_Protocols.pdf
8	Plant Species Assessment	https://screening.environment.gov.za/ScreeningDownloads/AssessmentProtocols/Gazetted_Plant_Species_Assessment_Protocols.pdf
9	Animal Species Assessment	https://screening.environment.gov.za/ScreeningDownloads/AssessmentProtocols/Gazetted_Animal_Species_Assessment_Protocols.pdf

OFFICIAL

Results of the environmental sensitivity of the proposed area.

The following section represents the results of the screening for environmental sensitivity of the proposed site for relevant environmental themes associated with the project classification. It is the duty of the EAP to ensure that the environmental themes provided by the screening tool are comprehensive and complete for the project. Refer to the disclaimer.

MAP OF RELATIVE AGRICULTURE THEME SENSITIVITY

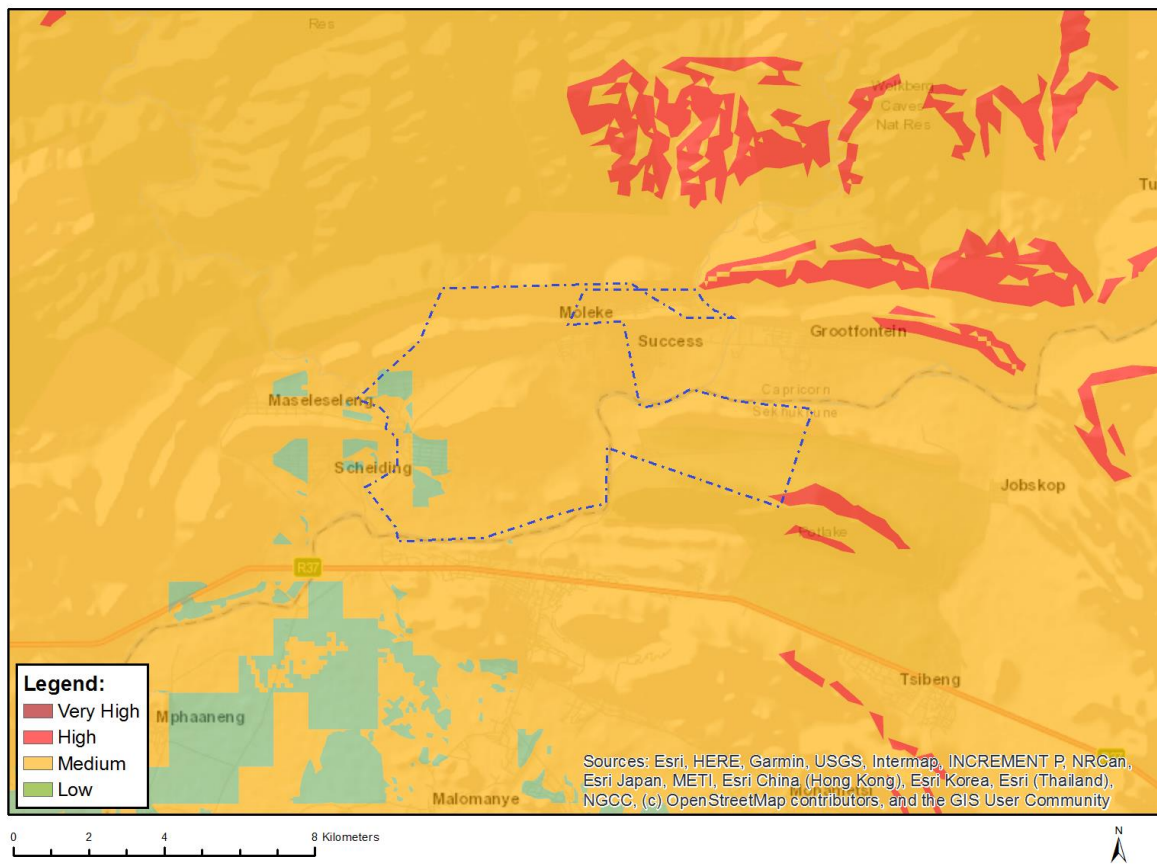


Very High sensitivity	High sensitivity	Medium sensitivity	Low sensitivity
	X		

Sensitivity Features:

Sensitivity	Feature(s)
High	Land capability;09. Moderate-High/10. Moderate-High
High	Subsistence Farming;Land capability;09. Moderate-High/10. Moderate-High
High	Subsistence Farming;Land capability;06. Low-Moderate/07. Low-Moderate/08. Moderate
High	Subsistence Farming;Land capability;01. Very low/02. Very low/03. Low-Very low/04. Low-Very low/05. Low
Low	Land capability;01. Very low/02. Very low/03. Low-Very low/04. Low-Very low/05. Low
Medium	Land capability;06. Low-Moderate/07. Low-Moderate/08. Moderate

MAP OF RELATIVE ANIMAL SPECIES THEME SENSITIVITY



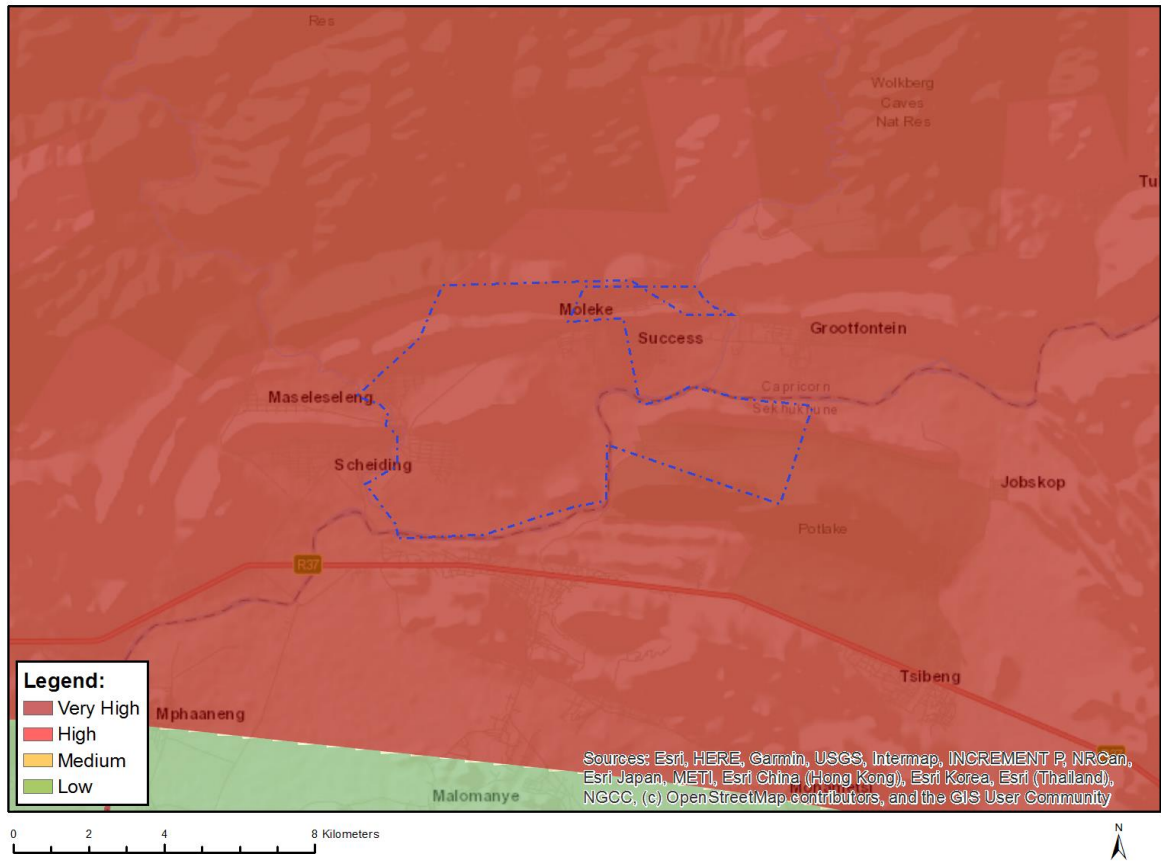
Where only a sensitive plant unique number or sensitive animal unique number is provided in the screening report and an assessment is required, the environmental assessment practitioner (EAP) or specialist is required to email SANBI at eiadatarequests@sanbi.org.za listing all sensitive species with their unique identifiers for which information is required. The name has been withheld as the species may be prone to illegal harvesting and must be protected. SANBI will release the actual species name after the details of the EAP or specialist have been documented.

Very High sensitivity	High sensitivity	Medium sensitivity	Low sensitivity
	X		

Sensitivity Features:

Sensitivity	Feature(s)
High	Aves-Gyps coprotheres
Low	Low sensitivity
Medium	Invertebrate-Thoracistus viridicus
Medium	Invertebrate-Aroegas fuscus
Medium	Aves-Terathopius ecaudatus
Medium	Aves-Sagittarius serpentarius
Medium	Mammalia-Cercopithecus albogularis schwarzi
Medium	Mammalia-Crocidura maquassiensis
Medium	Mammalia-Dasymys robertsii
Medium	Sensitive species 12

MAP OF RELATIVE AQUATIC BIODIVERSITY THEME SENSITIVITY

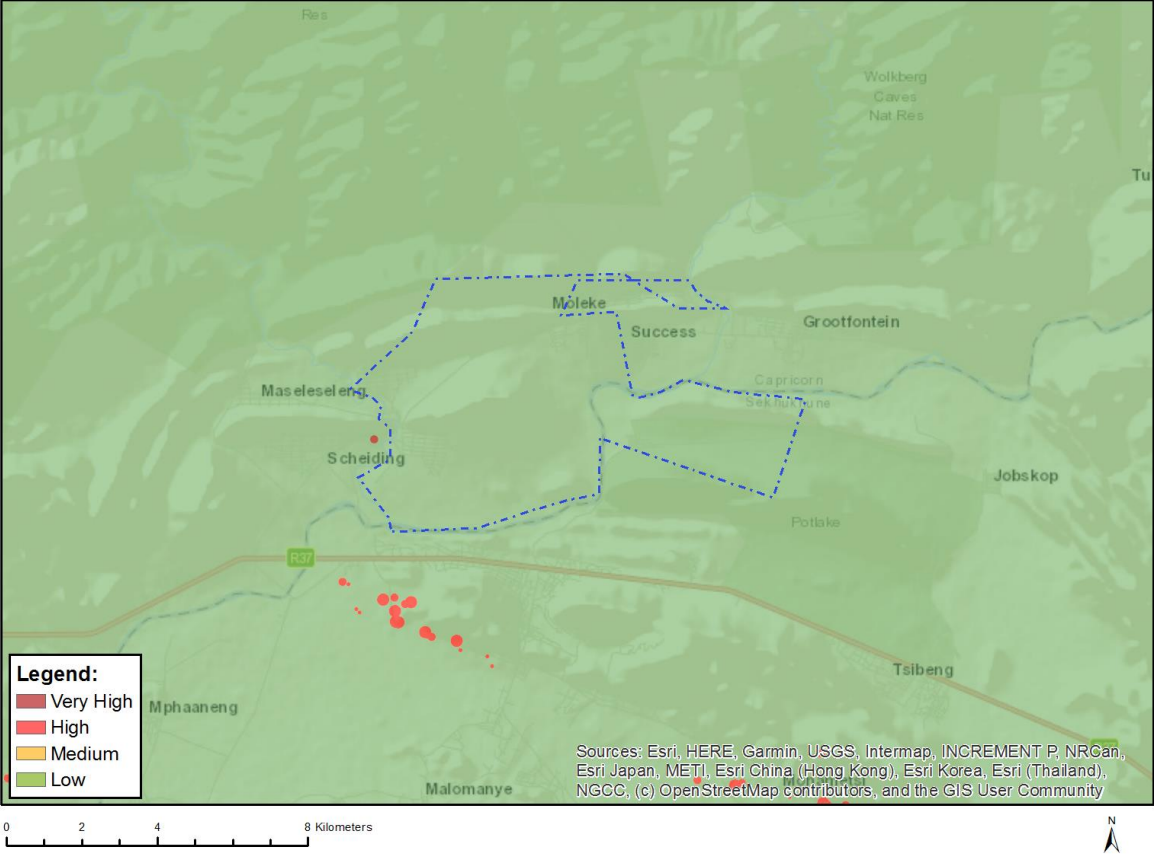


Very High sensitivity	High sensitivity	Medium sensitivity	Low sensitivity
X			

Sensitivity Features:

Sensitivity	Feature(s)
Very High	Strategic water source area
Very High	Wetlands and Estuaries

MAP OF RELATIVE ARCHAEOLOGICAL AND CULTURAL HERITAGE THEME SENSITIVITY

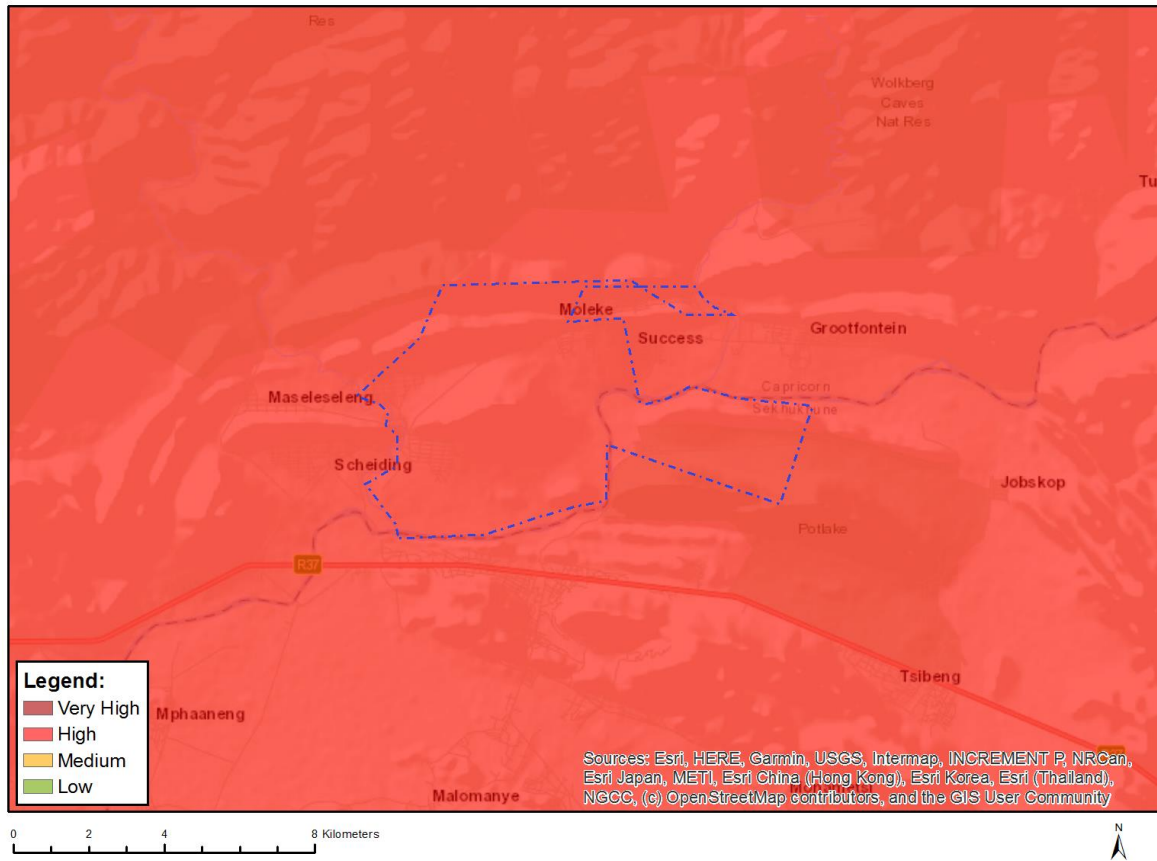


Very High sensitivity	High sensitivity	Medium sensitivity	Low sensitivity
			X

Sensitivity Features:

Sensitivity	Feature(s)
Low	Low sensitivity

MAP OF RELATIVE CIVIL AVIATION THEME SENSITIVITY

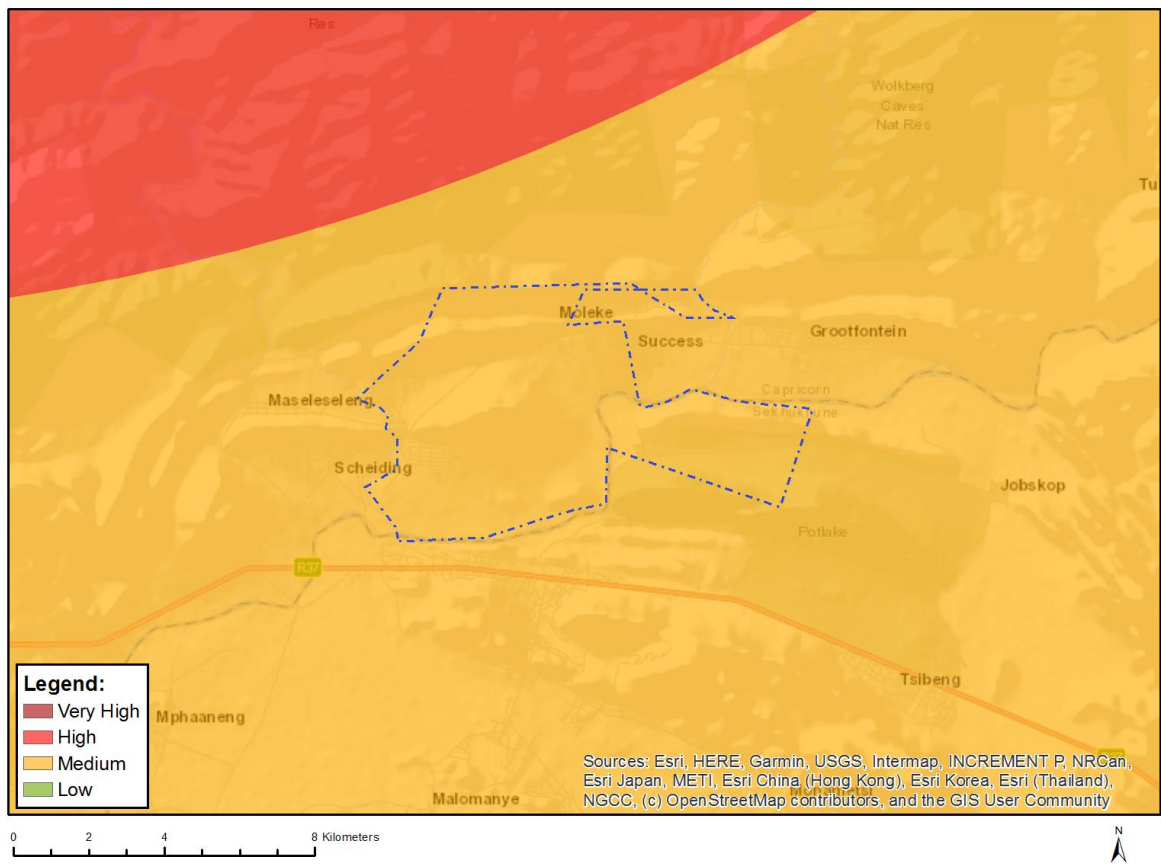


Very High sensitivity	High sensitivity	Medium sensitivity	Low sensitivity
	X		

Sensitivity Features:

Sensitivity	Feature(s)
High	Within 8 km of other civil aviation aerodrome
High	Dangerous and restricted airspace as demarcated
Medium	Between 8 and 15 km of other civil aviation aerodrome

MAP OF RELATIVE DEFENCE THEME SENSITIVITY

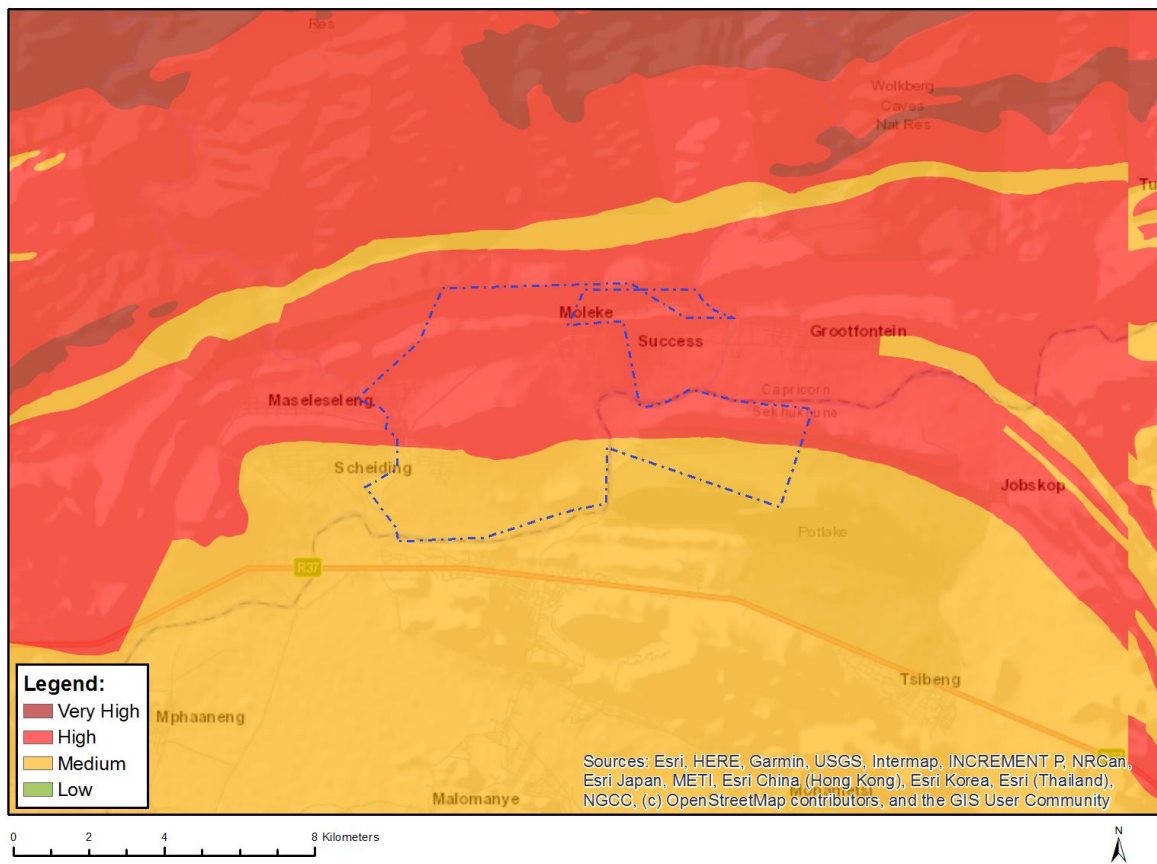


Very High sensitivity	High sensitivity	Medium sensitivity	Low sensitivity
		X	

Sensitivity Features:

Sensitivity	Feature(s)
Medium	Military and Defence Site

MAP OF RELATIVE PALEONTOLOGY THEME SENSITIVITY

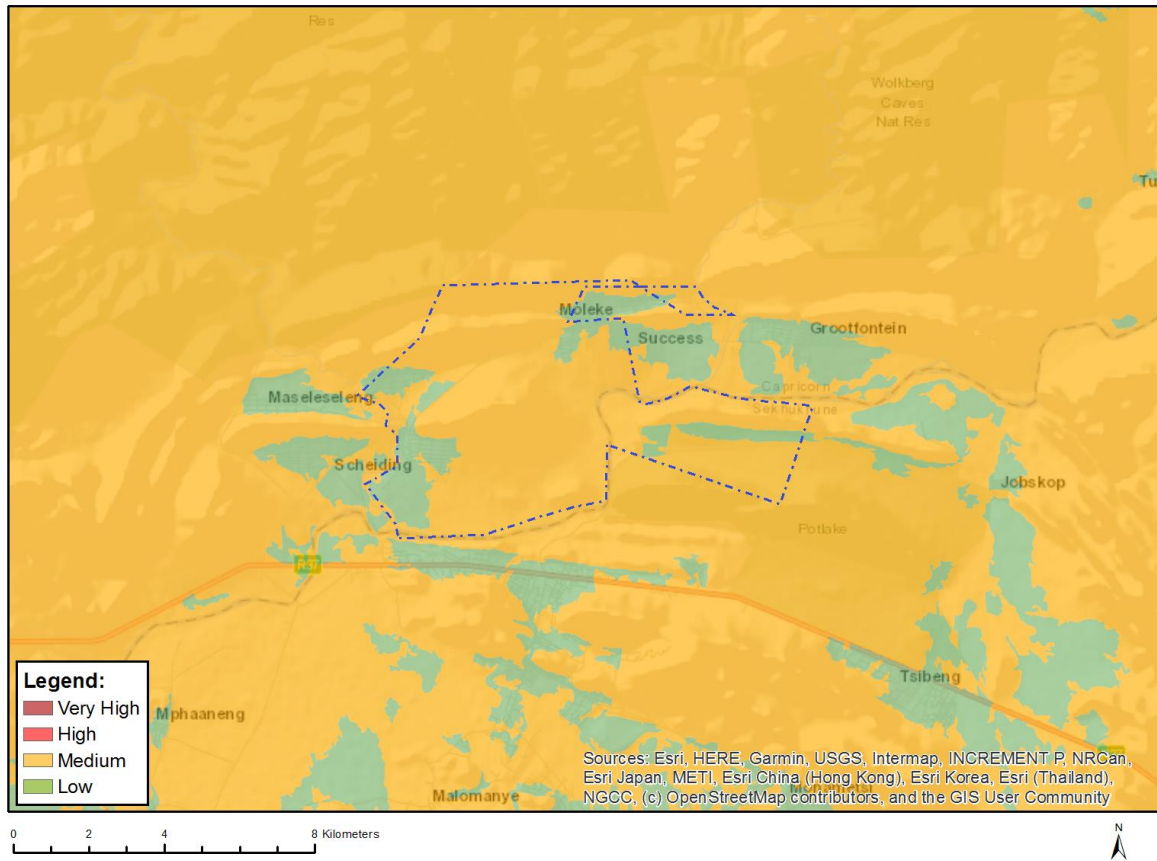


Very High sensitivity	High sensitivity	Medium sensitivity	Low sensitivity
	X		

Sensitivity Features:

Sensitivity	Feature(s)
High	Features with a High paleontological sensitivity
Medium	Features with a Medium paleontological sensitivity

MAP OF RELATIVE PLANT SPECIES THEME SENSITIVITY



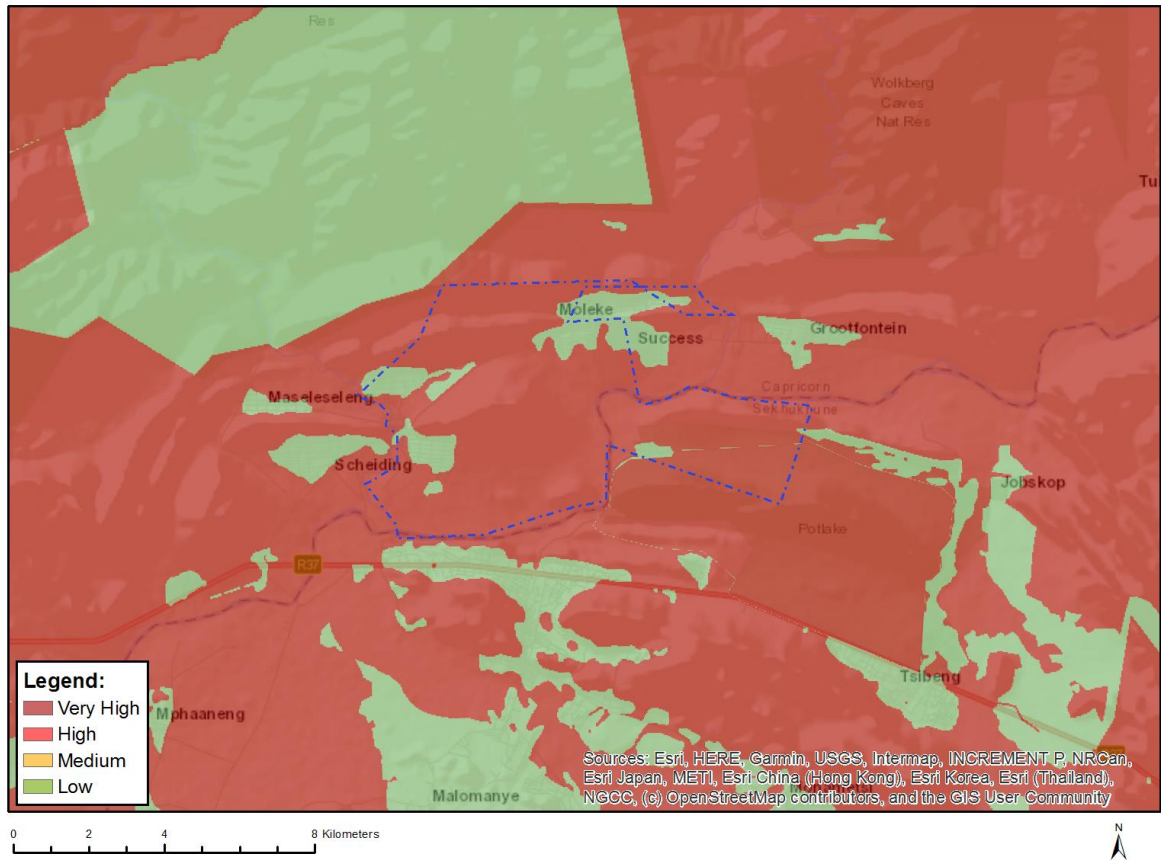
Where only a sensitive plant unique number or sensitive animal unique number is provided in the screening report and an assessment is required, the environmental assessment practitioner (EAP) or specialist is required to email SANBI at eiadatarequests@sanbi.org.za listing all sensitive species with their unique identifiers for which information is required. The name has been withheld as the species may be prone to illegal harvesting and must be protected. SANBI will release the actual species name after the details of the EAP or specialist have been documented.

Very High sensitivity	High sensitivity	Medium sensitivity	Low sensitivity
		X	

Sensitivity Features:

Sensitivity	Feature(s)
Low	Low Sensitivity
Medium	Sensitive species 1252
Medium	Sensitive species 1033
Medium	Sensitive species 587
Medium	Asparagus sekukuniensis
Medium	Asparagus hirsutus
Medium	Sensitive species 303
Medium	Plectranthus venterii
Medium	Sensitive species 485
Medium	Polygala sekhukuniensis
Medium	Combretum petrophilum

MAP OF RELATIVE TERRESTRIAL BIODIVERSITY THEME SENSITIVITY



Very High sensitivity	High sensitivity	Medium sensitivity	Low sensitivity
X			

Sensitivity Features:

Sensitivity	Feature(s)
Low	Low Sensitivity
Very High	Critical biodiversity area 1
Very High	Critical biodiversity area 2
Very High	Ecological support area 1
Very High	Ecological support area 2
Very High	Potlake Nature Reserve