

Project Details:

**BOSPOORT 558**

MINE LAYOUT

A portion of the Remainder of the farm Bospoort 558

Office reference: LWC077/P7S

Applicant:

Pitso 7Star Sand en Klip (Pty) Ltd

Contact Details:

13 Van Reenen Street  
Kroon Heuvel  
Kroonstad  
9599

Cel: 072 059 0605  
Fax: 086 503 5494

Client Signature:

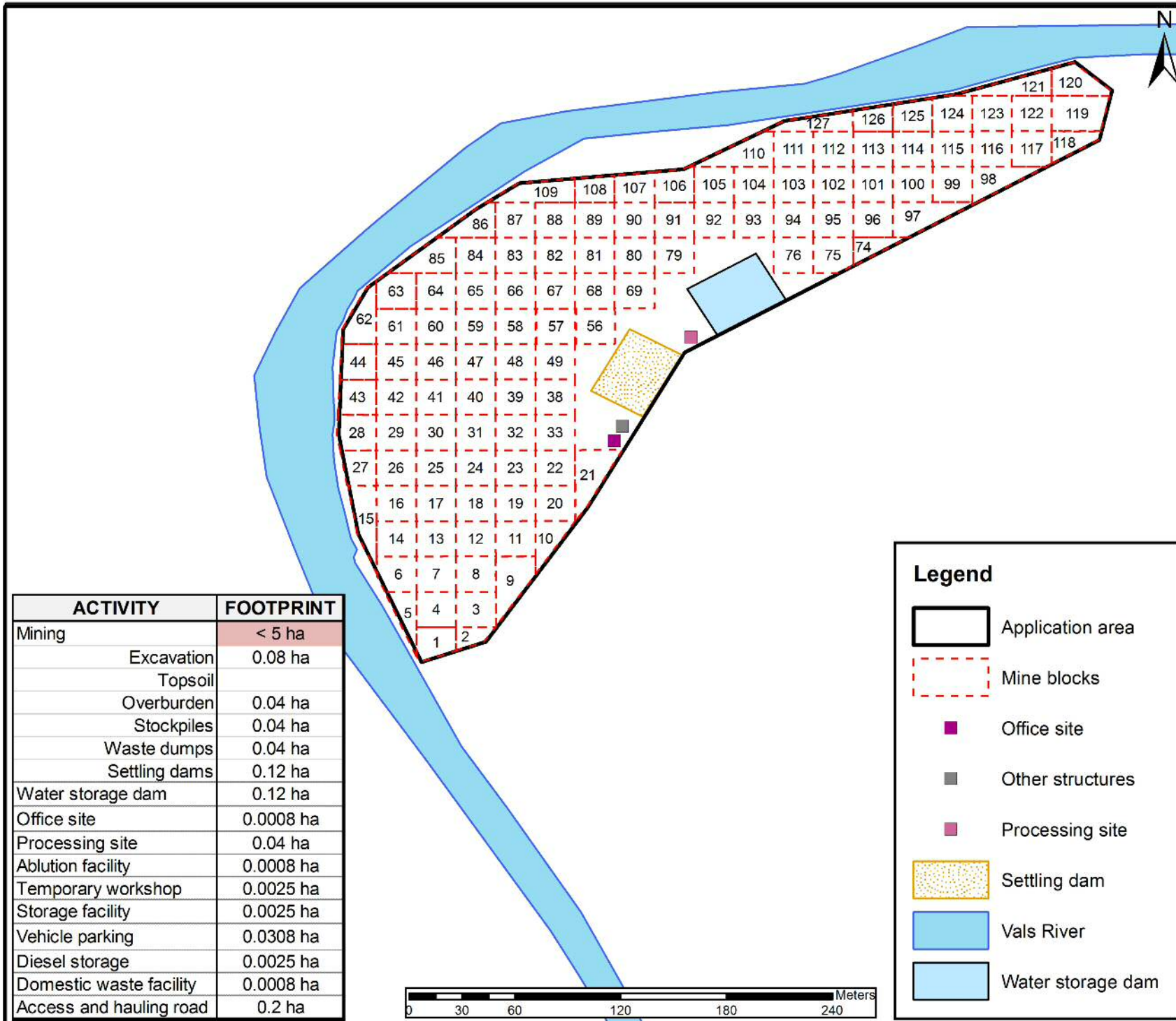
Signed:

Date: 7 February 2019

Scale:

1:3 000

**CONSULTANTS**  
 19 Park Road • Belgravia • Kimberley  
 PO Box 3226 • Kimberley • 8300  
 Tel: 053 831 7834 • Fax: 086 806 6315  
 lindie@liwico.co.za



ACTIVITY	FOOTPRINT
Mining	< 5 ha
Excavation	0.08 ha
Topsoil	
Overburden	0.04 ha
Stockpiles	0.04 ha
Waste dumps	0.04 ha
Settling dams	0.12 ha
Water storage dam	0.12 ha
Office site	0.0008 ha
Processing site	0.04 ha
Ablution facility	0.0008 ha
Temporary workshop	0.0025 ha
Storage facility	0.0025 ha
Vehicle parking	0.0308 ha
Diesel storage	0.0025 ha
Domestic waste facility	0.0008 ha
Access and hauling road	0.2 ha