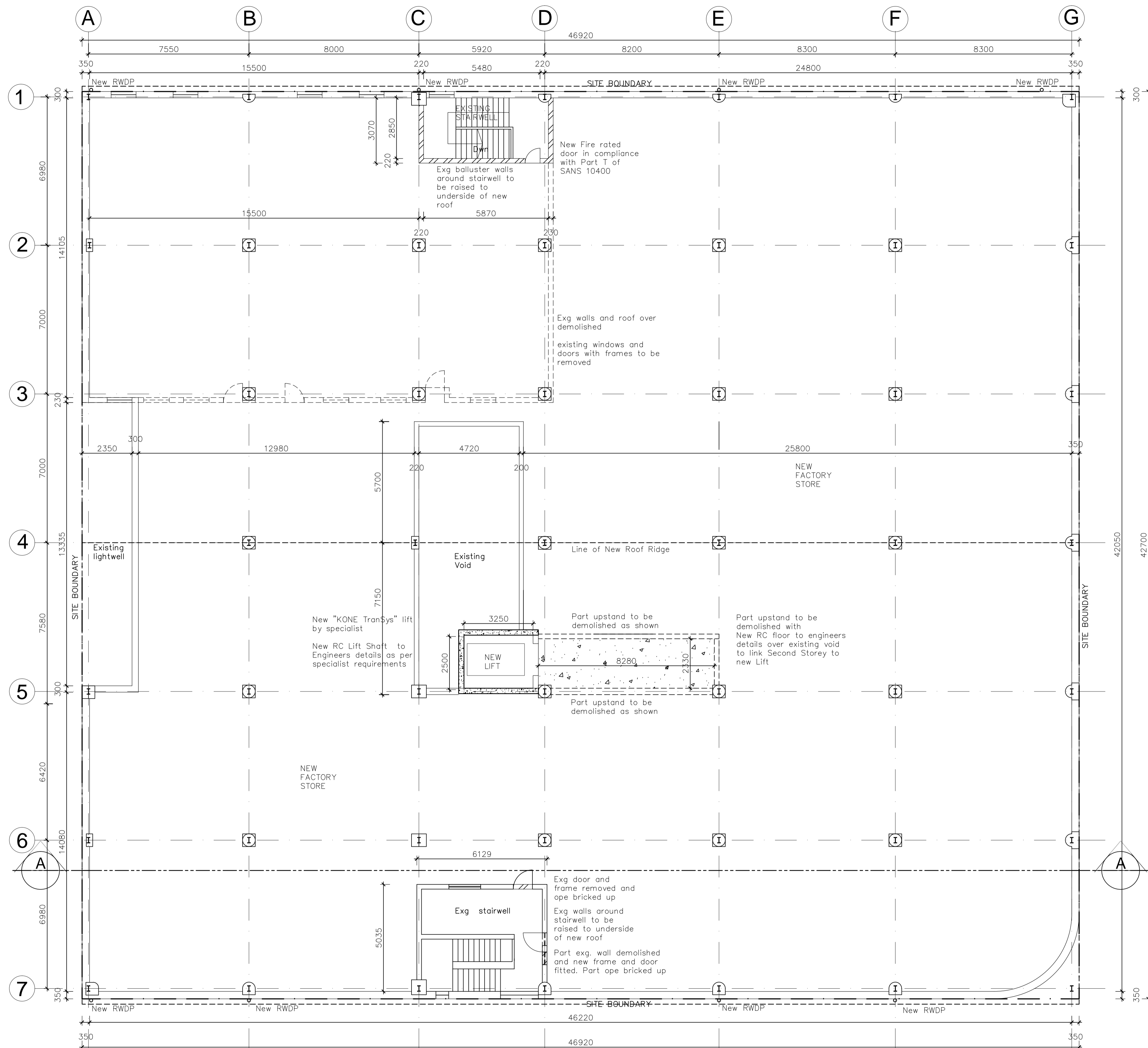


GENERAL NOTE
The Contractor is to verify all dimensions & levels on site before commencing work or producing shop drawings. Any discrepancies are to be reported to the Architect immediately.
COPYRIGHT NOTE
This drawing is subject to copyright and may not be reproduced, in whole or part, or in any manner whatsoever without written permission from the architect.



steel trusses and fixings to engineers details and design

Powdercoated aluminium Chromadek sheeting fixed to purlins in accordance with manufacturer's specifications

powdercoated aluminium rwdp and gutters by specialist to connect to exg.stormwater line as per engineers details

RC columns and beams to Engineer's detail and design

Existing waterproofing to be stripped. existing floor to be screed to level surface with selected finish over

New Clear Chromadek vertical cladding fixed to girths in accordance with manufacturer's specifications & engineers details

New Powdercoated aluminium Chromadek sheeting fixed to purlins in accordance with manufacturer's specifications & engineers details

New Powdercoated aluminium Chromadek cladding to match new roof sheeting fixed to girths in accordance with manufacturer's specifications & engineers details

OWNER/CLIENT:
MR_M_LOONAT
SIGNATURE : _____
CONTACT DETAILS: _____
IDENTITY NUMBER: _____

GIARC
designs(Pty)Ltd
P O Box 60886, Phoenix, 4080
Cell: +27 78 894 3897
Email: craigmoodley@gmail.com

RESPONSIBLE PERSON
DRAWN CRAIG MOODLEY (Pr. Arch.T-PAT 20664)
CHECKED

PROPOSED ADDITIONS AND ALTERATIONS TO EXISTING FACTORY FOR: COMET UNDIES cc
AT: 132-134 MAGWAZA MAPHALALA STREET (GALE STREET), BEREA SOUTH, DURBAN
ON: PORTION 1 OF ERF 139, DURBAN, KWA ZULU NATAL

Date: 03/08/2013 A1 Scale: AS_SHOWN
Drawn: CRAIG

Project Description
SECOND STOREY PLAN

WORKING DRAWING - SHEET 3 OF 6

- general notes:
- do not scale drawings, use figured dimensions only.
 - all dimensions are, unless otherwise specified, measured in millimeters.
 - all dimensions, angles and levels to be checked on site and any discrepancies are to be verified with the architect prior to the commencement of work.
 - all slabs, beams, columns, stairs and structural reinforced concrete and structural steel work according to engineers details.
 - these drawings are to be read in conjunction with structural, civil and mechanical engineers drawings.
 - all building work is to comply with SANS 1 0400 and local municipal by-laws.
 - all glazing thickness to comply with part N4.2.5
 - 9.1. all safety glazing in accordance with N4.4
 - public safety: all balustrading to be a minimum of one meter high and to comply with the requirements of part D of SANS 0400.
 - all stairs to comply with part M of SANS 10400.
 - all facilities for disabled persons to comply with part s of sans 10400.
- NOTE: certificate of stability to be issued on completion by structural engineer

SECOND STOREY PLAN(PROPOSED)
SCALE 1:100