

- GENERAL NOTES**
1. ALL LEVELS AND DIMENSIONS TO BE VERIFIED ON SITE.
  2. BUILDING REGULATIONS.
  3. DIMENSIONS TO BE USED IN PREFERENCE TO SCALING.
  4. FOUNDATIONS TO BE TO ENGINEER'S DESIGN AND DETAIL.
  5. STAIRS TO BE TO ENGINEER'S DESIGN AND DETAIL.
  6. FOUNDATIONS TO BE TO ENGINEER'S DESIGN AND DETAIL.
  7. FOUNDATIONS NOT TO ENCRUSH OVER BOUNDARIES.
  8. FLOOR SLABS TO BE TO ENGINEER'S DESIGN AND DETAIL.
  9. 50% POISON TO BE A 15% P.C. SOLUTION IN ACCORDANCE WITH S.A.S. 051.

**PROPOSED ADDITION AND ALTERATION TO DWELLING**  
 AT 45 DAHLIA ROAD ASHERVILLE ON  
 16 OF ERF 351 SPRINGFIELD  
 D & D.G. CHELTY

**Contact :**  
 SUB FOR : 031 208 3398  
 D 2589  
 SACAP No. 031 261 2157 072 912 3740

**Author :**  
 Author: Krishna Basdeo  
 Mayville 4091  
 Cluster Box 255  
 Cambridge Plans

**Drawn by :**  
 SITE 464 363  
 EXIST. DWELLING 121 436  
 EXIST. DWELLING OMITTED 20 400  
 EXIST. DWELLING COVERAGE 101 360  
 EXIST. OUTLINE COVERAGE 78 200  
 EXIST. DWELLING COVERAGE 153 982  
 PROPOSED FIRST FLOOR TOTAL COVERAGE 232 182

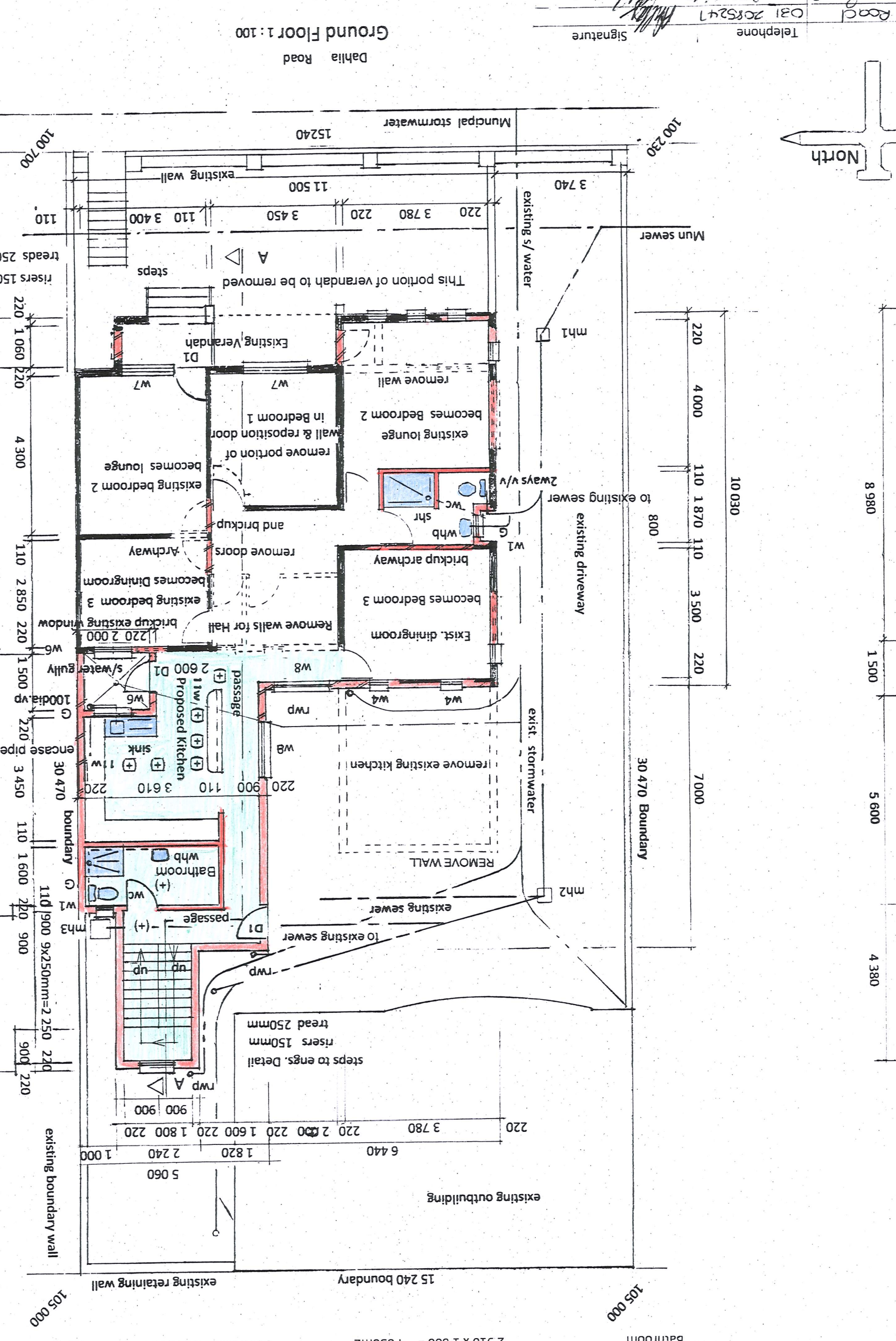
**GLAZING**

Ground Floor	Hall	4 500x3 500=15 525	2 329
Ground Floor	Kitchen	2 840x1 720=4 885	2 538
Ground Floor	Bathroom	2 910x1 400=4 074	610
Ground Floor	Bathroom	3 150x1 800=5 670	851
Ground Floor	Stairwell	3 600x 900 = 3 240	486
Ground Floor	Passage	5 980x 745=4 451	6 041
Ground Floor	Private Balcony	3 340x1 280=4 275	1 985
Ground Floor	Private Entertainment	5 980x 900=5 382	1 864
Ground Floor	Guest Room	3 780x 3 500=13 230m <sup>2</sup>	1 245
Ground Floor	Foyer	4 100 x 3 290 = 13 489m <sup>2</sup>	847
Ground Floor	Bedroom 4	8 540 x 900 = 7 686m <sup>2</sup>	1 245
Ground Floor	Bedroom 2	3 000 x 900 = 2 700m <sup>2</sup>	1 245
Ground Floor	Bedroom 3	3 610 x 1 000 = 3 610m <sup>2</sup>	698
Ground Floor	Study	3 610 x 3 450 = 12 476m <sup>2</sup>	1 245
Ground Floor	Bathroom	2 910 x 500 = 1 455m <sup>2</sup>	698
Ground Floor	Bathroom	2 910 x 500 = 1 455m <sup>2</sup>	698
Ground Floor	Bathroom	2 910 x 500 = 1 455m <sup>2</sup>	698
Ground Floor	Bathroom	2 910 x 500 = 1 455m <sup>2</sup>	698
Ground Floor	Bathroom	2 910 x 500 = 1 455m <sup>2</sup>	698
Ground Floor	Bathroom	2 910 x 500 = 1 455m <sup>2</sup>	698

Net Floor Area: 15 525

Glazing: 2 329

15% Glazing



**Window / door no.:**

Window / door no.	area	size	material	glazing	glaazing schedule / notes:
W1	900x 500	450	aluminium	gmm thick frosted safety glass	gmm thick glazing for above 1.5m to have toughened safety glass
D1	1 000x 800	800	"	"	"
W2	900x 500	450	"	"	"
W3	1 500x 1 500	2 250	"	"	"
W4	1 500x 1 000	1 500	"	"	"
W5	1 500x 1 500	2 250	"	"	"
W6	1 500x 1 000	1 500	"	"	"
W7	1 500x 1 000	1 500	"	"	"
W8	1 500x 1 500	2 250	"	"	"
W9	1 500x 1 500	2 250	"	"	"
W10	2 100x 1 000	2 100	"	"	"

**East Elevation 1:100**

GR. L 111 30  
 INV. L 110 50  
 DEPTH 0 80

Window / door no.:

Window / door no.	area	size	material	glazing
D1	900x 500	450	aluminium	gmm thick frosted safety glass
W1	1 000x 800	800	"	"
W2	900x 500	450	"	"
W3	1 500x 1 500	2 250	"	"
W4	1 500x 1 000	1 500	"	"
W5	1 500x 1 500	2 250	"	"
W6	1 500x 1 000	1 500	"	"
W7	1 500x 1 000	1 500	"	"
W8	1 500x 1 500	2 250	"	"
W9	1 500x 1 500	2 250	"	"
W10	2 100x 1 000	2 100	"	"

**South Elevation 1:100**

GR. L 111 30  
 INV. L 110 50  
 DEPTH 0 80

Window / door no.:

Window / door no.	area	size	material	glazing
D1	900x 500	450	aluminium	gmm thick frosted safety glass
W1	1 000x 800	800	"	"
W2	900x 500	450	"	"
W3	1 500x 1 500	2 250	"	"
W4	1 500x 1 000	1 500	"	"
W5	1 500x 1 500	2 250	"	"
W6	1 500x 1 000	1 500	"	"
W7	1 500x 1 000	1 500	"	"
W8	1 500x 1 500	2 250	"	"
W9	1 500x 1 500	2 250	"	"
W10	2 100x 1 000	2 100	"	"

**West Elevation 1:100**

GR. L 111 30  
 INV. L 110 50  
 DEPTH 0 80

Window / door no.:

Window / door no.	area	size	material	glazing
D1	900x 500	450	aluminium	gmm thick frosted safety glass
W1	1 000x 800	800	"	"
W2	900x 500	450	"	"
W3	1 500x 1 500	2 250	"	"
W4	1 500x 1 000	1 500	"	"
W5	1 500x 1 500	2 250	"	"
W6	1 500x 1 000	1 500	"	"
W7	1 500x 1 000	1 500	"	"
W8	1 500x 1 500	2 250	"	"
W9	1 500x 1 500	2 250	"	"
W10	2 100x 1 000	2 100	"	"

**North Elevation 1:100**

GR. L 111 30  
 INV. L 110 50  
 DEPTH 0 80

Window / door no.:

Window / door no.	area	size	material	glazing
D1	900x 500	450	aluminium	gmm thick frosted safety glass
W1	1 000x 800	800	"	"
W2	900x 500	450	"	"
W3	1 500x 1 500	2 250	"	"
W4	1 500x 1 000	1 500	"	"
W5	1 500x 1 500	2 250	"	"
W6	1 500x 1 000	1 500	"	"
W7	1 500x 1 000	1 500	"	"
W8	1 500x 1 500	2 250	"	"
W9	1 500x 1 500	2 250	"	"
W10	2 100x 1 000	2 100	"	"

1m high balustrade to have maximum 100mm space to pass  
 r/c slab to engineers detail & to be treated with an approved waterproofing compound and  
 15% glazing