

<b>TO</b>	<b>KIMOPAX EASTERN CAPE</b>
<b>FROM</b>	<b>TRANSPORT INFRASTRUCTURE - DESIGN</b>
<b>DATE</b>	<b>12 APRIL 2019</b>
<b>SUBJECT</b>	<b>DR08344 AND DR08429 SITE INFORMATION</b>

## 1. SITE LOCATION

The site is located to the North of Butterworth CBD. The project spans over two local municipality namely the Mngquma Local Municipality and Mbhashe Local Municipality both municipalities' falls under Amatole District Municipality's area of jurisdiction, within the Province of the Eastern Cape (Refer to Table 1 and Figure 1). The site can be accessed via Mazeppa Bay road in Bika form N2. The District Roads (DR08344 and DR08429) lead to Nqadu Great Place and will be upgraded to a surfaced class 3 and class 4 roads respectively. There are two Bridges, two Major Culverts and one Low Level river crossings (refer to table 2 and figure 1)) with varying lengths that accommodate single traffic which need to be upgraded to accommodate a single carriageway (one lane each direction). These structures will be upgraded to Bridges or Major Culverts depending on the hydraulic analysis.

Table 1: Project Coordinates

Road	Location		Description
	Latitude	Longitude	
DR08344	-32° 17' 39.66"	28° 13' 8.951"	Start
	-32° 14' 36.55"	28° 19' 0.232"	Mngquma/Mbhashe Border
	-32° 11' 30.41"	28° 24' 21.7"	End
DR08429	-32° 12' 45.27"	28° 22' 23.07"	Start
	-32° 14' 21.85"	28° 25' 16.45"	Nqadu Great Place
	-32° 14' 16.39"	28° 27' 47.17"	End

Table 2: Existing Structures

Number	Location		Description	Road
	Latitude	Longitude		
1	-32° 17' 5.708"	28° 13' 9.437"	Major Culvert	DR08344
2	-32° 15' 52.17"	28° 14' 35.82"	Bridge	DR08344
3	-32° 15' 22.54"	28° 15' 23.21"	Bridge	DR08344
4	-32° 13' 11.4"	28° 21' 41.66"	Major Culvert	DR08344
5	-32° 14' 43.86"	28° 26' 51.44"	Low Level Crossing/Major Culvert	DR08429



# DR08344 AND DR08429 SITE INFORMATION

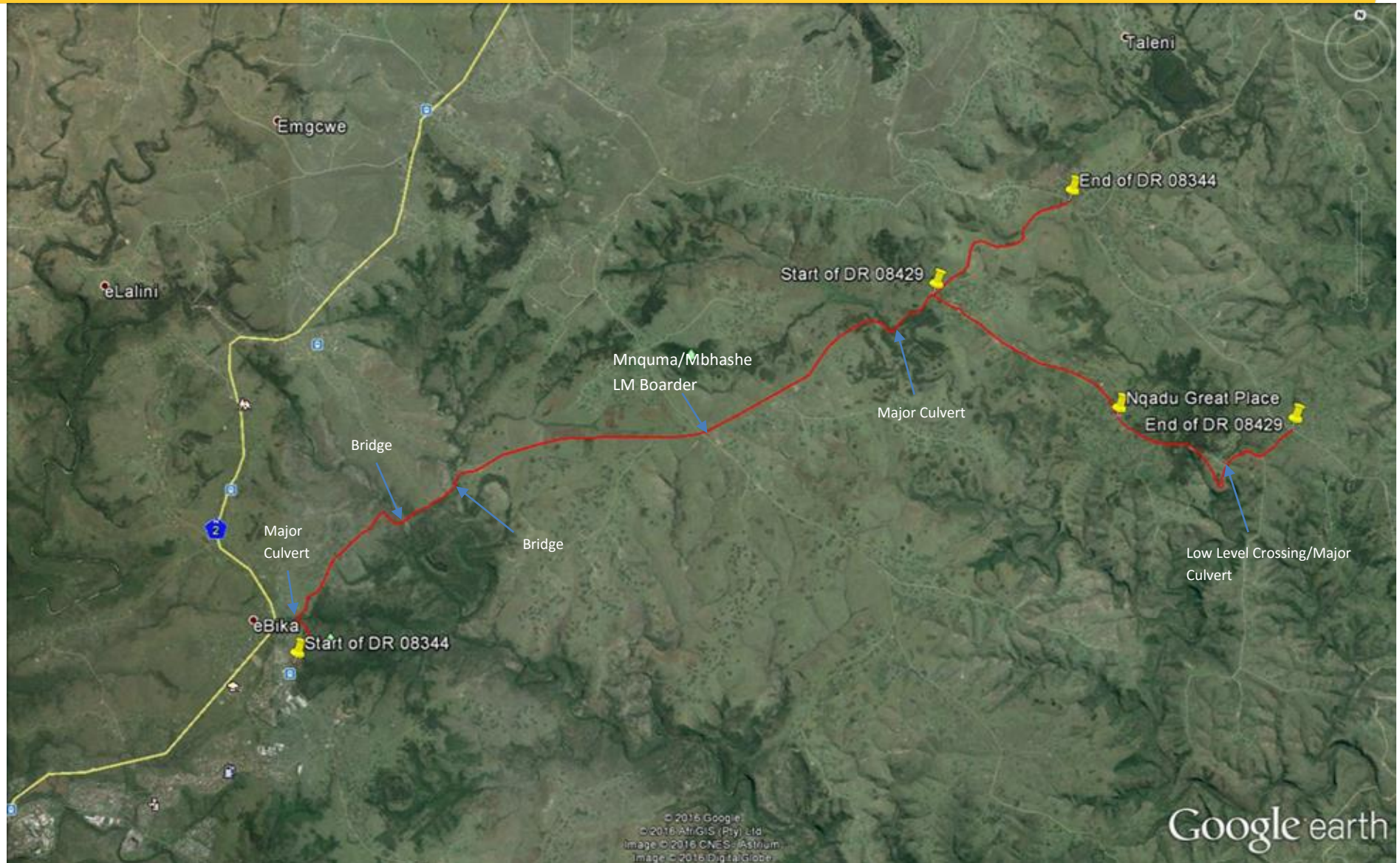


Figure 1: Locality map

An efficient, safe, sustainable, affordable and accessible transport system



## 2. PROJECT SCOPE

The construction works will involve the following:

- Bulk cut and fill operation
- Construction of layer-works (Material to be obtained from borrow pits and hard rock quarry on site)
- Sealing of new layer-work surface
- Construction of new concrete lined surface drains parallel to existing road
- Construction of subsoil drainage
- Construction of Storm water drainage
- Demolish 5 existing bridges/major culverts
- Construction of 5 new bridges/major culverts

## 3. PROPOSED FENCELINE POSITION

Currently the road is not fenced and the road reserve is not demarcated. The Eastern Cape department of Transport standard of a minimum of 5m from the road toe was applied where possible, however in some areas this distance is reduced considerably to avoid land acquisition processes. Refer to Annexure A for Fence line position.

