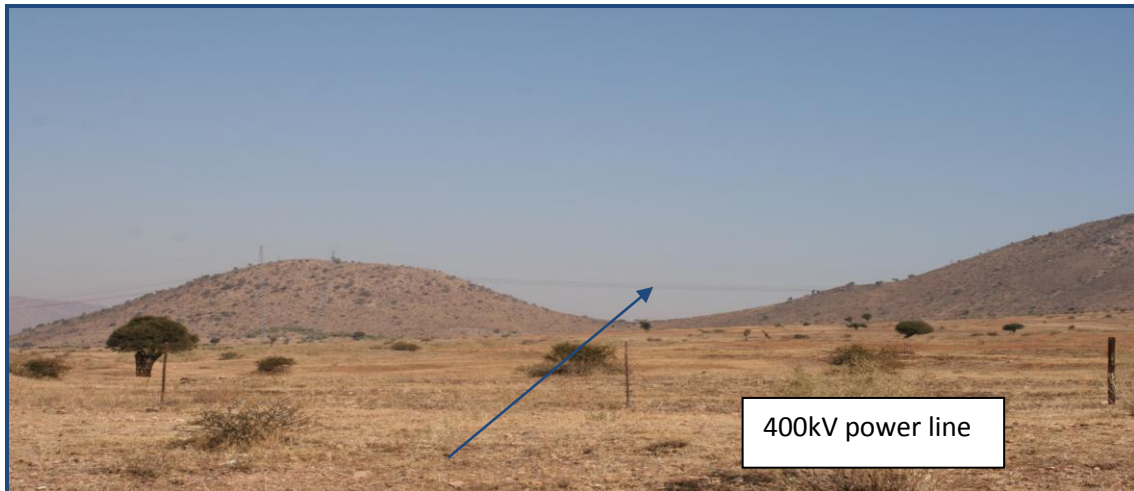


## TSHATANE TO JANE FURSE 132 kV POWER LINE



**Figure 33:** Option 2 will run parallel the 400kV power line



**Figure 34:** Option two will run parallel the existing line, next to a non-perennial river. There is no adequate ROW



**Figure 35:** Agave americana demarcates agricultural fields



**Figure 36:** View of the lanscape that the lines will traverse



**Figure 37:** The lines will traverse behind the structure/house



**Figure 38:**The lines will cross Lepellane River, absence of the riparian zone should be noted



**Figure 39:** Gravel road near Marulaneng



**Figure 40:** Alternative 1 & 2 will run parallel the existing line near Marulaneng