



Plate 1: Taken towards the south west.
Plate 8: Old quarry within corridor.



Plate 2: Taken towards the west.
Plate 7: Passing underneath an existing power line.



Plate 3: Taken towards the north west.
Plate 6: Crossing stormwater channel and S478.



Plate 4: Taken towards the north.
Plate 5: Power line will cross R30.



Plate 9: Power Line will cross over the R708.



Plate 11: Power line will have to be placed within agricultural fields for ~5,25Km.



Plate 10: Power Line will cross over Bree Street.



Plate 12: Wetland system within 200m corridor.



Plate 13: Cemetery located within corridor.



Plate 18: Power Line crossing the S494.



Plate 14: View of the R30 and a portion of power line corridor taken towards the north.



Plate 19: Waste disposal site located within corridor. Water tower visible on the horizon.



Plate 15: Beginning of power line route.

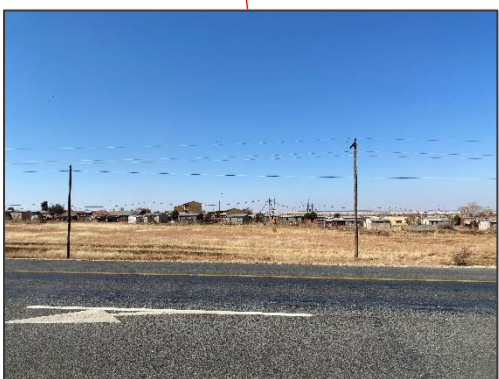


Plate 16: Masilo Informal Settlement.



Plate 17: Gravel pit located within corridor.



ENVIRONAMICS