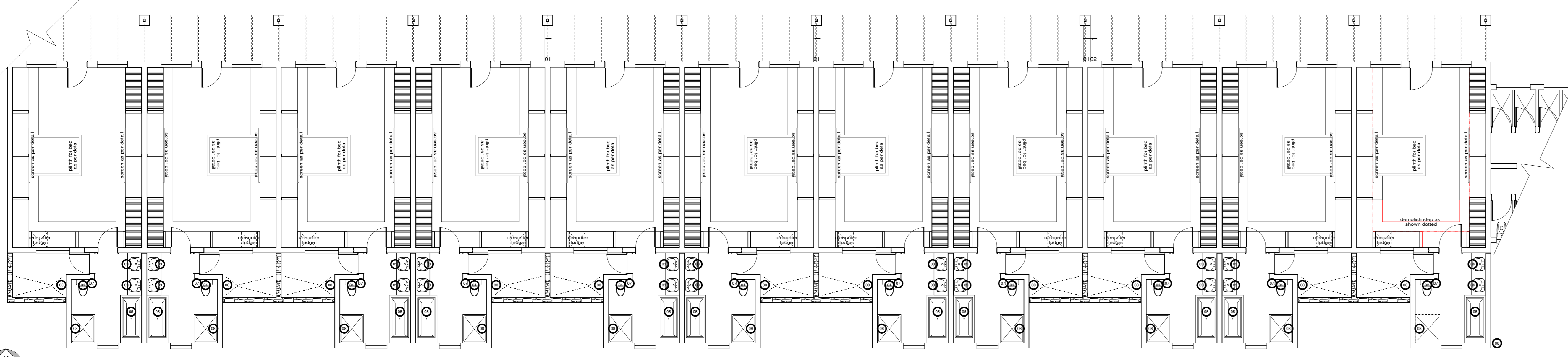
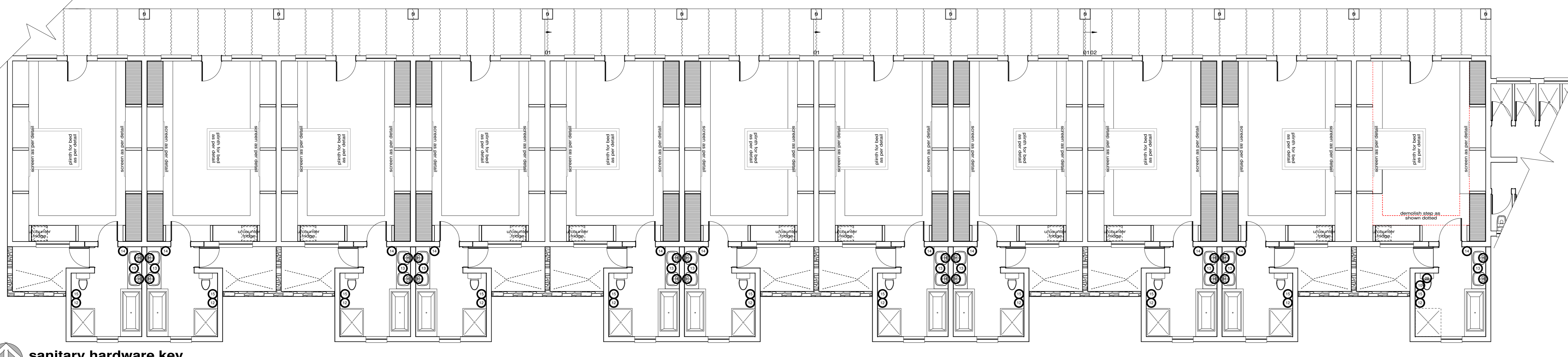


COPYRIGHT NOTICE
 COPYRIGHT © 2017, Bakopane Architects cc
 Copyright subsists in this drawing. The person or entity whose name appears in the list block of this drawing, is hereby granted a non-exclusive license to use, display, print and/or reproduce this drawing to the extent necessary to carry out and complete the project described in the title block of this drawing. This license in respect of the copyright is expressly limited as stated and the person and/or entity referred to above shall not be entitled to grant sub-licenses or in respect of the copyright in this drawing to any other entity. This license confers no ownership rights in the copyright or in respect of the copyright in this drawing to any publication, transmission, adaptation and/or inclusion of the copyright in a cinematograph film or television broadcast or an act of copyright infringement which will render the doer of the act liable for civil law copyright infringement and may in certain circumstances render the doer liable to criminal prosecution. Requests and enquiries concerning this drawing and the rights subsisting therein should be addressed to the copyright owner.

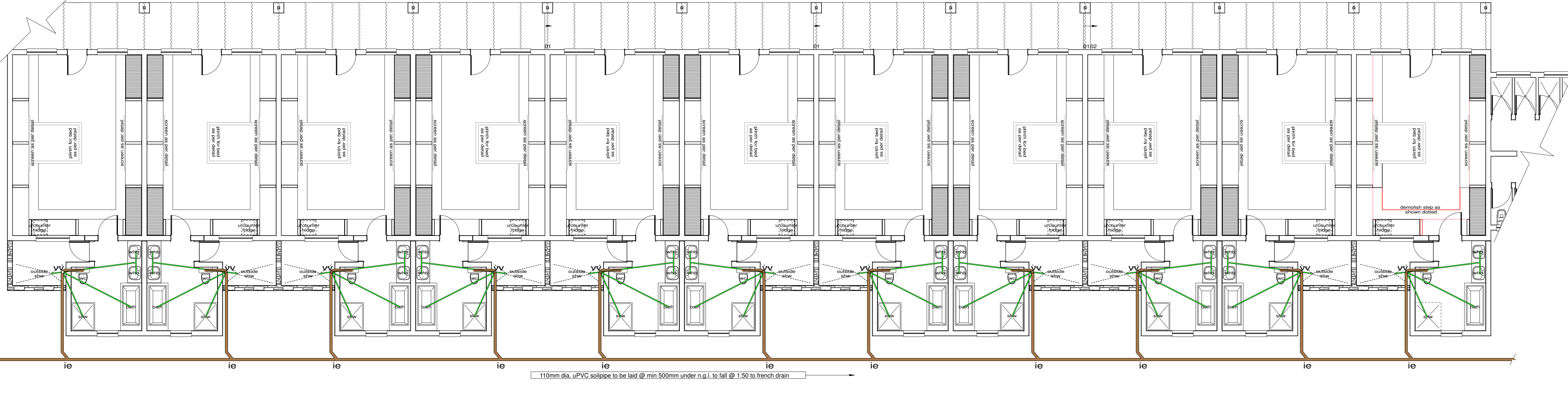
No.	Date	Notes	Drawn
Rev 08	28/08/17	Revised for measurement	NOT
Rev 09	01/09/17	Working drawings started	COUJUE



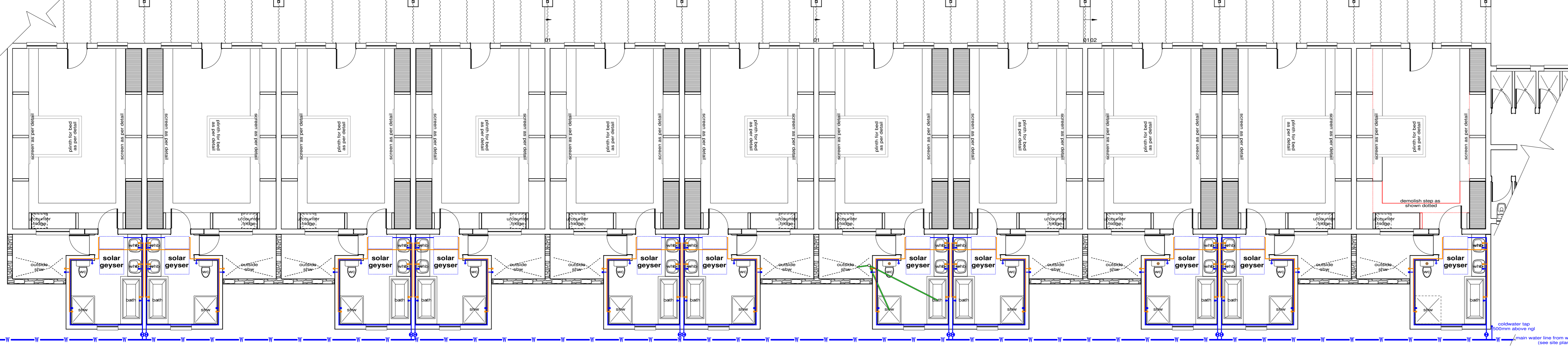
sanitary fittings key
 scale 1:100



sanitary hardware key
 scale 1:100



sewer plan
 scale 1:100



water reticulation plan
 scale 1:100

sanitary fittings:

- 01 Vaal Sanitaryware Corcorse II CC-vitreous china close coupled suite colour White (Code: 773682) with Thermostat Soft-Close seat, comprising 90° outlet closed rim washdown pan with matching 6 litre custom top dual flush-closed rim toilet.
- 02 Vaal Sanitaryware Pearl Paralegic vitreous china floor mounted paralegic washdown suite colour White (Code: 73058C), comprising semi close couple 90° outlet open rim washdown pan and matching 9 litre custom complete w.c. fittings and purpose made side-flush lever and purpose-made chromium plated side flush lever.
- 03 Vaal Sanitaryware Weaver 1TH vitreous china counter top vanity basin colour White (Code: 704201), size 770 x 455mm with one tap-hole, fitted onto vanity top (elsewhere specified) including hanger brackets (Code: 813123) with Cobra Watertech Callisto plain raised single tap hole basin mixer with 110mm body extension, mounting kit, angle valves with sliding flanges, flexible connection tubes and temperature and flow control cartridge (Code: CL-951R), manufactured in accordance with SANS 1480:2005 (BS EN 1286). Cobra Watertech 32mm chrome plated bottle trap (Code: 340), with 25mm deep re-seat, adjustable telescopic pipe and 32mm outlet.
- 04 Vaal Sanitaryware Weaver 1TH vitreous china counter top vanity basin colour White (Code: 704201), size 875 x 455mm with one tap-hole, fitted onto vanity top (elsewhere specified) including hanger brackets (Code: 813123) with Cobra Watertech Callisto plain raised single tap hole basin mixer with 110mm body extension, mounting kit, angle valves with sliding flanges, flexible connection tubes and temperature and flow control cartridge (Code: CL-951R), manufactured in accordance with SANS 1480:2005 (BS EN 1286).
- 05 Dadothas Zenith free standing bath complete with all waste fittings etc. as per DADO Africa (Pty) Ltd. with Aqualine Square free standing bath tap and hand shower mixer as per DADO Africa (Pty) Ltd. DADO Africa (Pty) Ltd 016 880 9431
- 06 Cobra Watertech 20mm standard brass hose bibtap (Code: 108-20) with vinylnut, lining and 20mm hose union, manufactured in accordance with SANS 226:2009 Type 1 (BS 1610).
- 07 Cobra Watertech Ledimo 15mm chrome plated F x F underwall stoptap (Code: LO-228-15) with sliding wall flange, manufactured in accordance with SANS 226:2004 Type 2 (BS 5412); stop tap to be installed at each toilet, basin, urinal and sink.
- 08 Cobra Watertech 15mm chrome plated Full Flow shower head (Code: 74-15), size 150mm diameter with classic spray, coupled to 2x Cobra Watertech Ledimo 15mm chrome plated swivel shower arm (Code: 271U-250) with 250mm throw, coupled to 2x Cobra Watertech Ledimo 15mm chrome plated C x C (Compressor) underwall stoptap (Code: LO-238-15) with sliding wall flange, manufactured in accordance with SANS 226:2004 Type 1 (BS 5412), one for hot water and one for cold water.

sanitary hardware:

- 09 Franke CNTXBR 32mm diameter satin finished stainless steel custom rail (Code: 359912), size 700 x 250mm with Franke Fine Grip surface, plugged and screwed to the wall with stainless steel screws.
- 10 Franke CNTX700A 32mm diameter satin finished stainless steel angle bar (Code: 359877), size 618 x 95 x 25mm with Franke Fine Grip surface, plugged and screwed to the wall with stainless steel screws.
- 11 Franke M600HD 8mm mirrors (Code: 359922), size 600 x 500mm high, concealed thief resistant fixings, plugged and screwed to the wall with stainless steel screws.
- 12 Franke Chronos BS610 1.25mm thick satin finished stainless steel perforated waste container (Code: 359825), size 410 x 222 x 308mm high with lock, 150 degree radius front and perforated face pattern, waste bin capacity of 23 litres, plugged and screwed to the wall with stainless steel screws.
- 13 Franke Chronos SD90 soap dispenser (Code: 359892), size 44mm diameter x 144 x 85mm high with a replaceable 1 litre polystyrene container.
- 14 Franke Stratos STRX600 1.21 1.5mm thick satin finished stainless steel paper towel dispenser (Code: 359700), size 302 x 134 x 305mm high with a capacity of 300-400 towels and cylinder lock with standard Franke key, plugged and screwed to the wall with stainless steel screws.
- 15 Franke Stratos STRX672 1.21 1.5mm thick satin finished stainless steel double toilet roll dispenser (Code: 359716), size 156 x 141 x 303mm high for 2 rolls maximum 108mm diameter with spindle system and cylinder lock with standard Franke key, plugged and screwed to the wall with stainless steel screws.

sewer key:

- Marley pipesystems 40mm uPVC waste pipes with all necessary bends, joints etc. installed as per manufacturers specifications and recommendations.
- For installations above ground: Marley pipesystems 110mm uPVC plain waste pipes with all necessary bends, joints etc. installed as per manufacturers specifications and recommendations.
- For installations under ground: Marley pipesystems 110mm uPVC socketed waste pipes with all necessary bends, joints etc. installed as per manufacturers specifications and recommendations.

water reticulation key:

- Isolation valves for toilets/urinals etc.
- Cold water tap
- Hot water tap
- Cold water pipe (in wall or roofspace)
- Hot water pipe (in wall or roofspace)
- Main water feed from existing source
- Non Return Valve
- Isolating Valve

geyser specification:
 Kwikol Kwikol direct close coupled thermosiphon solar water heating system with 10kva solar vacuum tubes set, system to include 150 Litre SOL 150-DIR round solar water heater complying with SANS 1307:2007, overall size 530mm diameter x 1035mm high with 22mm copper pipe and operating at 400kPa with 400kPa Kwikol Mono pressure control and expansion relief valve (Code: KHN3.14), 20mm drainage and 22mm insulated pipe work including two Kwikol vacuum breakers (Code: KHN4.2002A) installed on hot and cold water supply, including all necessary brackets, frost resistant pipe set, thermostatic mixing valve and 7 day digital geyser timer. Geyser to be positioned horizontally on roof slab, all in accordance with SANS 10254:2004 and SANS 10106:2006, connected to single phase electrical power supply with isolator 1m away from connection on geyser.

- GENERAL NOTES:**
1. Check all measurements, levels and details on site before commencement with work.
 2. Refer any discrepancies to architect.
 3. All work to be done in accordance with SANS 10400
 4. Nothing to be scaled from drawing; request measurement from architect.
 5. Architect's & engineer's drawings to be read together.
 6. Drawing to be used for intention as mentioned in Drawing description.



CLIENTS SIGNATURE:



DEPARTMENT'S SIGNATURE:



PRINCIPAL AGENT SIGNATURE:



ARCHITECTS SIGNATURE:

TITLE:
PROPOSED ALTERATIONS & ADDITIONS TO TAUNG SKULL HERITAGE SITE FOR NORTH-WEST RURAL, ENVIRONMENTAL & AGRICULTURE DEPARTMENT PROVINCE OF NORTH-WEST

DRAWING DESCRIPTION: SANITARY FITTINGS AND HARDWARE, SEWER PLAN, WATER RETICULATION PLAN	ORIGINAL Dwg. SIZE SCALE: 1:100 REV. 0	A1 0
---	---	---------

southern block