

Line Length: 21.103 km
Sheet 2 of 13
Rev: 1



DISTRIBUTION
NORTHERN CAPE OPERATING UNIT
LAND DEVELOPMENT

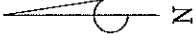
PROJECT NAME: OVAAL - LUCKYVALLEY LINE REBUILD

SURVEYED: P MTHEBEU

CONDUCTOR: FOX

FEEDER: OVAAL - LUCKYVALLEY 22kV

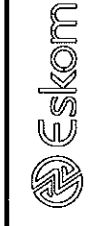
SCALE: 1:1000



PTN 17 OF 74
FARM READS DRIFT

PTN 32 OF 74
FARM READS DRIFT

Line Length: 21.103 km
Sheet 3 of 13
Rev: 1



DISTRIBUTION
NORTHERN CAPE OPERATING UNIT
LAND DEVELOPMENT

PROJECT NAME: OVAAL - LUCKYVALLEY LINE REBUILD

SURVEYED: P MTHEMBU
FEEDER: OVAAL - LUCKYVALLEY 22KV

CONDUCTOR: FOX
SCALE: 1:1000

OVL206
D-DT1870
11m POLE

OVL207
D-DT1763
11m POLE

OVL208
D-DT1870
11m POLE

OVL209
D-DT1870
11m POLE

OVL210
D-DT1870
11m POLE

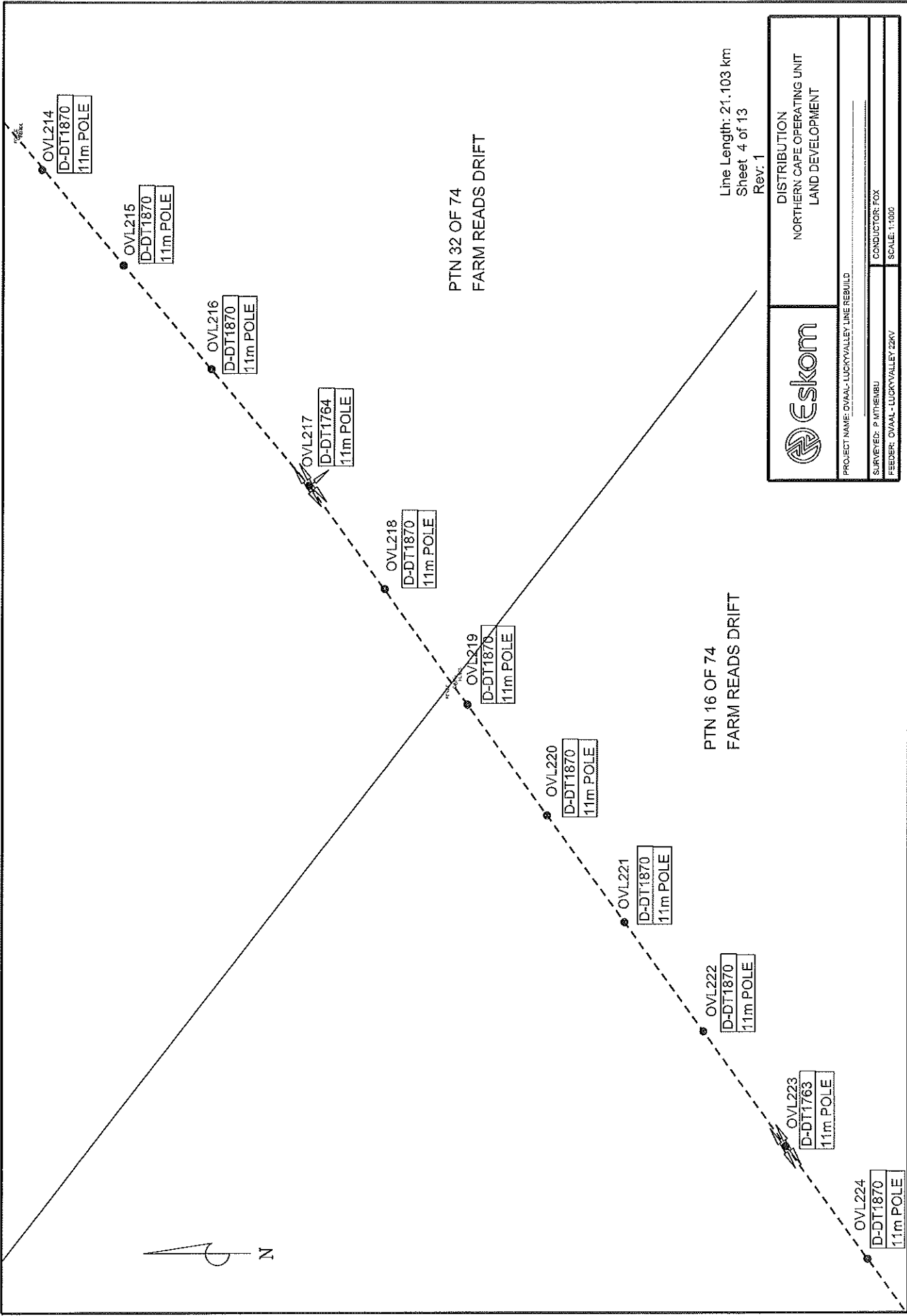
OVL211
D-DT1870
11m POLE


OVL212
D-DT1763
11m POLE

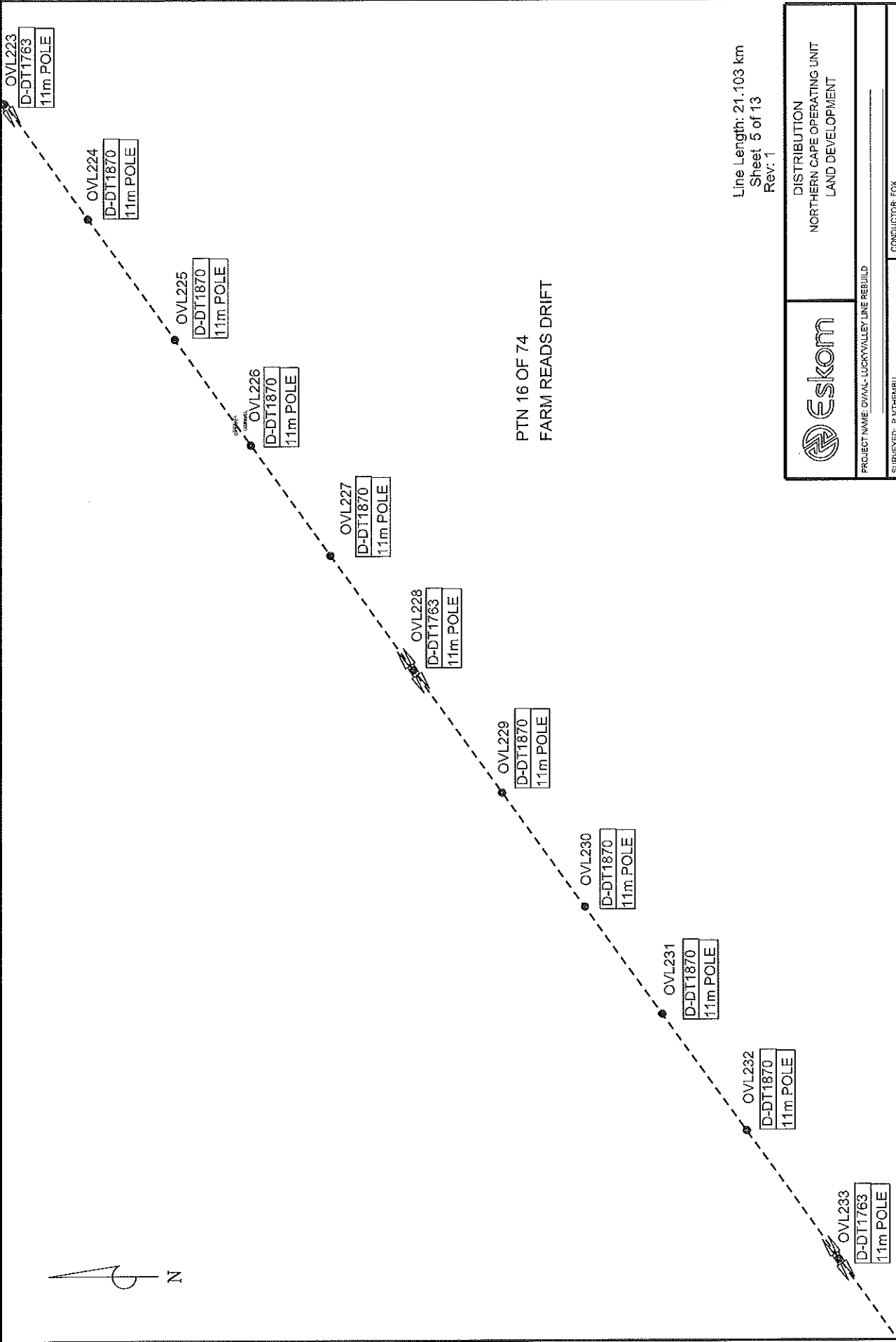
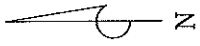
OVL213
D-DT1870
11m POLE

OVL214
D-DT1870
11m POLE

OVL215
D-DT1870
11m POLE



	DISTRIBUTION NORTHERN CAPE OPERATING UNIT LAND DEVELOPMENT	
	PROJECT NAME: OVAAL - LUCKY VALLEY LINE REBUILD	
SURVEYED: P. MTHEMBU		CONDUCTOR: FOX
READER: OVAAL - LUCKY VALLEY 22KV		SCALE: 1:5000

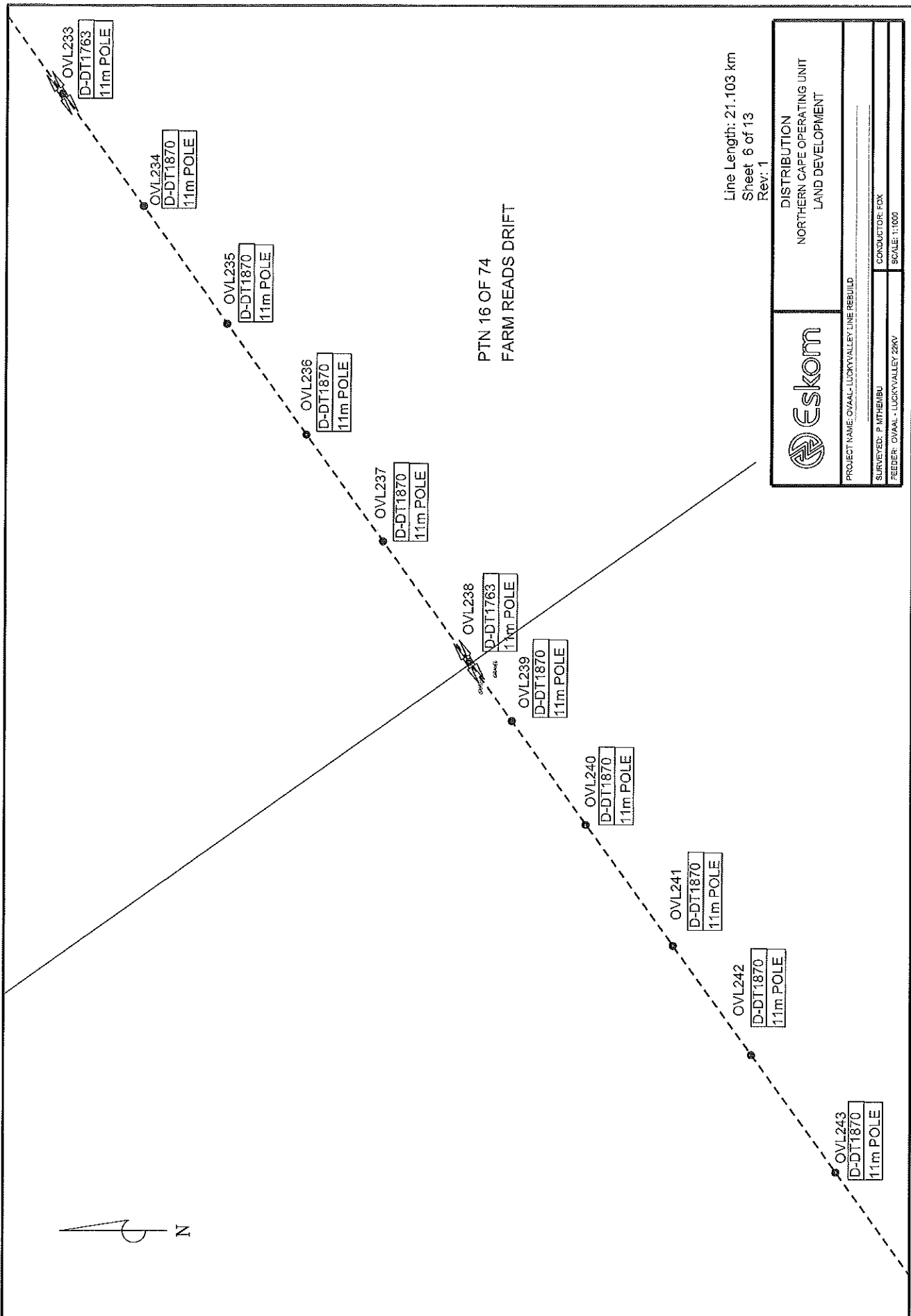
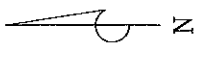


Line Length: 21.103 km
Sheet 5 of 13
Rev: 1



DISTRIBUTION
NORTHERN CAPE OPERATING UNIT
LAND DEVELOPMENT

PROJECT NAME: OVAAL - LUCKYVALLEY LINE REBUILD	
SURVEYED: P. MTHEMBU	CONDUCTOR: FOX
FEDER: OVAAL - LUCKYVALLEY 2KV	SCALE: 1:1000



PTN 16 OF 74
FARM READS DRIFT

Line Length: 21.103 km
Sheet 6 of 13
Rev: 1

	DISTRIBUTION NORTHERN CAPE OPERATING UNIT LAND DEVELOPMENT
	PROJECT NAME: O'VAAL - LUCKYVALLEY LINE REBUILD
SURVEYED: P. MTHEMBU	CONDUCTOR: FOX
FEEDER: O'VAAL - LUCKYVALLEY 22KV	SCALE: 1:1000

OVL243
D-DT1870
11m POLE

OVL244
D-DT1763
11m POLE

OVL245
D-DT1870
11m POLE

OVL246
D-DT1870
11m POLE

OVL247
D-DT1870
11m POLE

OVL248
D-DT1870
11m POLE

OVL249
D-DT1870
11m POLE

OVL250
D-DT1764
11m POLE

OVL251
D-DT1870
11m POLE

OVL252
D-DT1764
11m POLE

OVL253
D-DT1870
11m POLE

PTN 15 OF 74
FARM READS DRIFT

Line Length: 21,103 km
Sheet 7 of 13
Rev: 1



DISTRIBUTION
NORTHERN CAPE OPERATING UNIT
LAND DEVELOPMENT

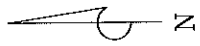
PROJECT NAME: OVAL - LUCKYVALLEY LINE REBUILD

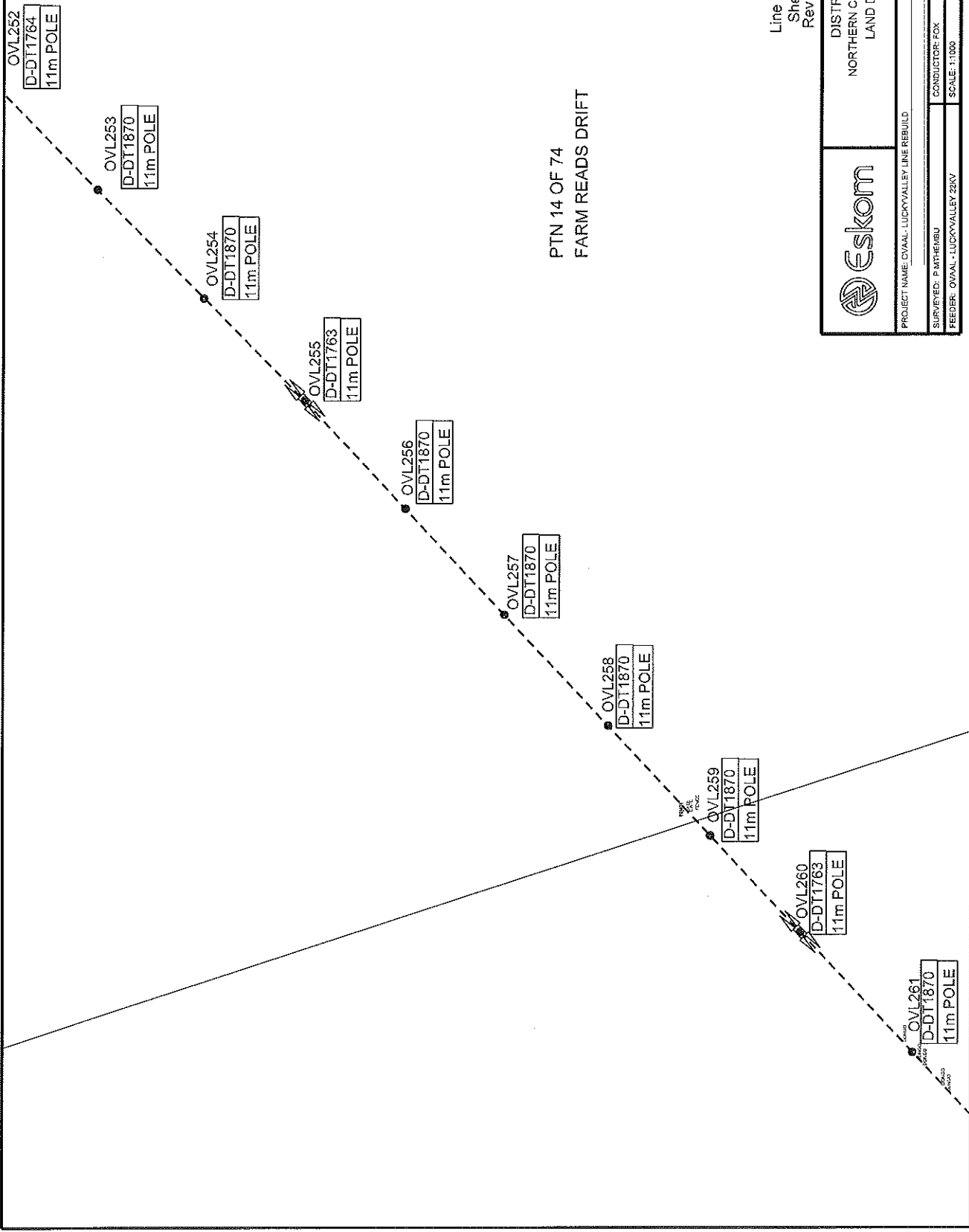
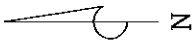
SURVEYED: P MTHEMBU

FEEDER: OVAL - LUCKYVALLEY 22KV

SCALE: 1:1000

CONDUCTOR: FOX





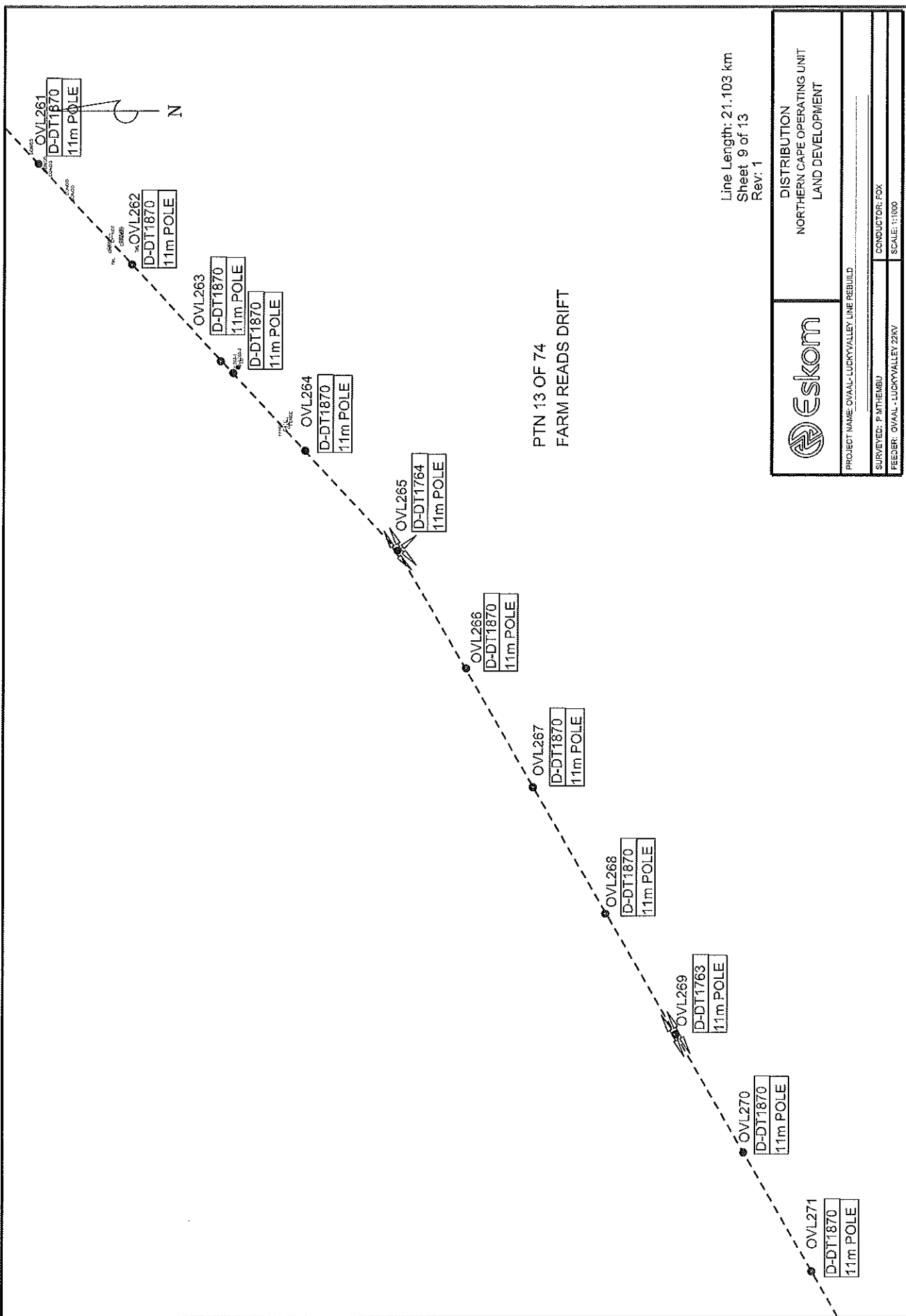
PTN 14 OF 74
FARM READS DRIFT

Line Length: 21.103 km
Sheet 8 of 13
Rev: 1



DISTRIBUTION
NORTHERN CAPE OPERATING UNIT
LAND DEVELOPMENT

PROJECT NAME: OVAL - LUCKYVALLEY LINE REBUILD	
SURVEYED: P.M. HEMBU	CONDUCTOR: FOX
FEEDER: OVAL - LUCKYVALLEY 2&V	SCALE: 1:1000



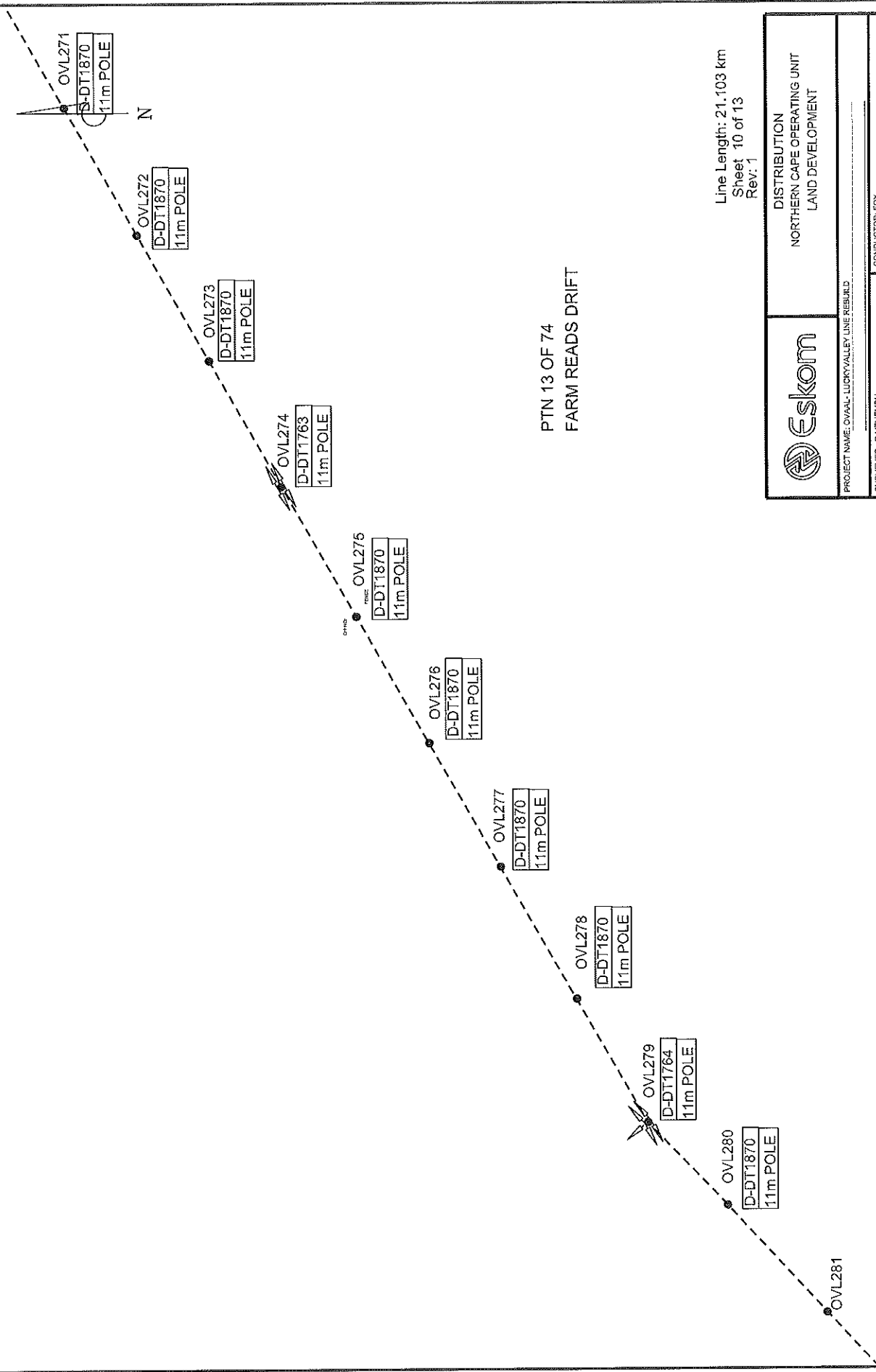
Line Length: 21.103 km
Sheet 9 of 13
Rev: 1



DISTRIBUTION
NORTHERN CAPE OPERATING UNIT
LAND DEVELOPMENT


PROJECT NAME: OVAAL - LUCKYVALLEY LINE REBUILD

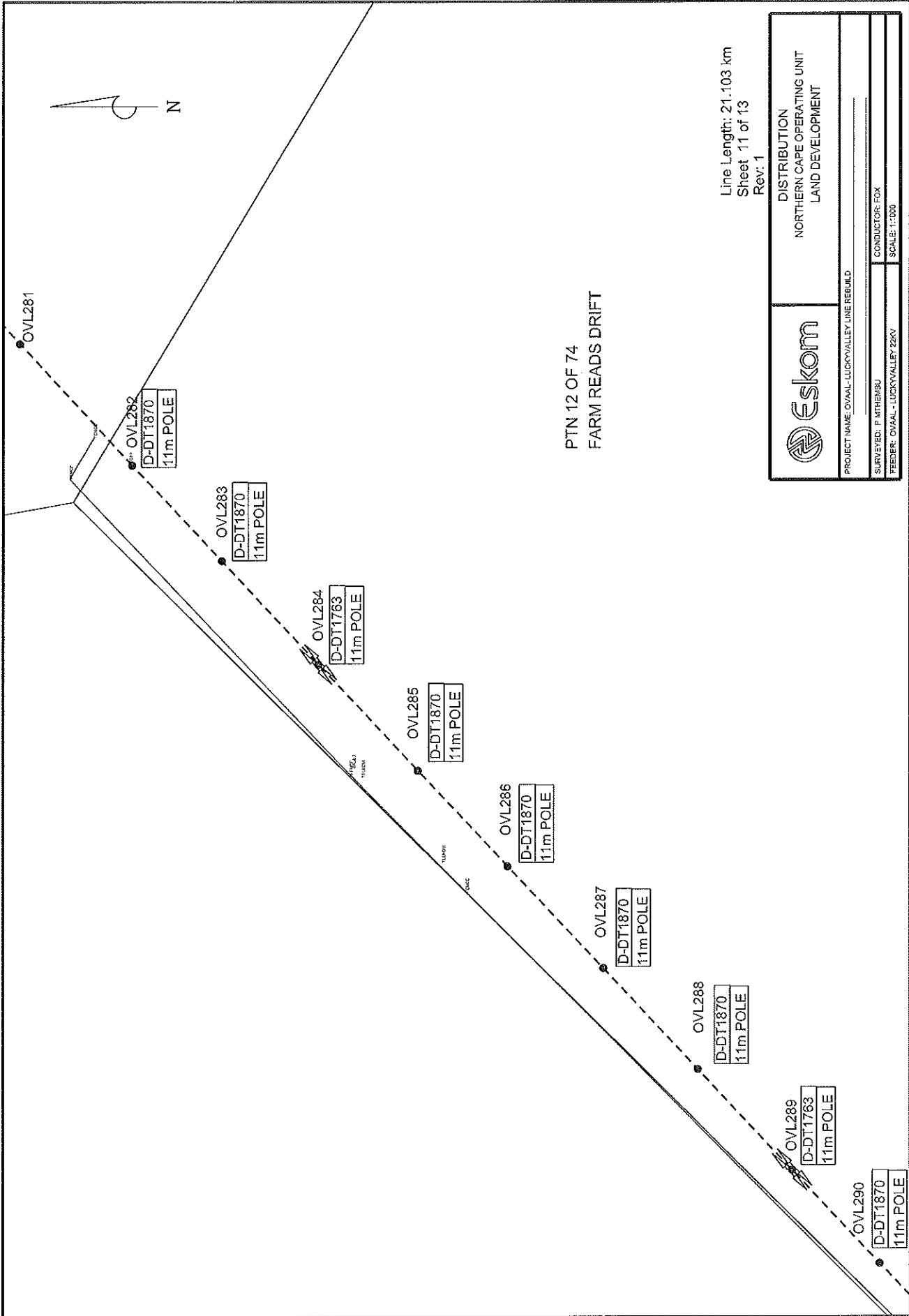
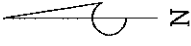
SURVEYED: P. MTHEMBU	CONDUCTOR: FOX
FEEDER: OVAAL - LUCKYVALLEY 23KV	SCALE: 1:1000



PTN 13 OF 74
FARM READS DRIFT

Line Length: 21,103 km
Sheet 10 of 13
Rev: 1

	DISTRIBUTION NORTHERN CAPE OPERATING UNIT LAND DEVELOPMENT	
	PROJECT NAME: OVAAL - LUCKYVALLEY LINE REBUILD	
SURVEYED: PMTHEBIBU	CONDUCTOR: FOX	
FEEDER: OVAAL - LUCKYVALLEY ZIKV	SCALE: 1:1000	



PTN 12 OF 74
FARM READS DRIFT

Line Length: 21.103 km
Sheet 11 of 13
Rev: 1



DISTRIBUTION
NORTHERN CAPE OPERATING UNIT
LAND DEVELOPMENT

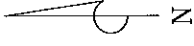
PROJECT NAME: OVAL - LUCKYVALLEY LINE REBUILD

SURVEYED: P MITHEMBU

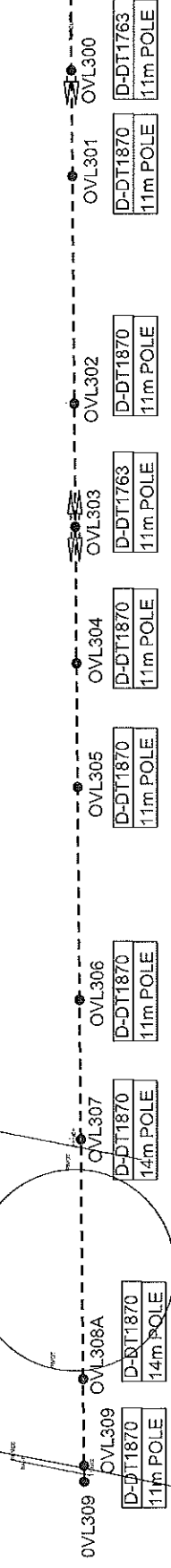
CONDUCTOR: FOX

FEEDER: OVAL - LUCKYVALLEY 22KV


SCALE: 1:200



PTN 2 OF 74
FARM READS DRIFT



Line Length: 21.103 km
Sheet 13 of 13
Rev: 1

	DISTRIBUTION NORTHERN CAPE OPERATING UNIT LAND DEVELOPMENT	
	PROJECT NAME: OVAL-LUCKYVALLEY LINE REBUILD	
SURVEYED: P. MTHEMBU		
CONDUCTOR: FOX		
FEEDER: OVAL-LUCKYVALLEY 22KV		
SCALE: 1:1000		

NORTHERN CAPE LAND SURVEY

NORTHERN CAPE OPERATING UNIT
 LAND DEVELOPMENT
 P.O. BOX 606
 8300



TEL: (053) 830 5809
 FAX: (086) 886 5137

FEEDER : OVAL LUCKYVALLEY					EXISTING POWERLINE INFORMATION					
PROJECT No.:	OVL LINE REBUILD			kV	22kVA		STRUCTURE TYPE :	T-TYPE		
CONSUMER : ESKOM					ADMIN DISTRICT : DOUGLAS					
CONDUCTOR LENGTH	FOX	MINK (m)	HARE (m)	TOTAL		SURVEYED :	P MTHEMBU		DATE : 28 AUG 2019	
	21.103 km			21.103 km		DRAWN :	P MTHEMBU		DATE : 02 SEPT 2019	

MATERIAL LIST

DRAWING No.	DESCRIPTION	QTY
DDT1870		88
DDT1763		16
DDT1743		7

POLES	9m		11m	13l	12m		13m	14m	2	15m		16m		18m	STAYS	97	STRUTS
-------	----	--	-----	-----	-----	--	-----	-----	---	-----	--	-----	--	-----	-------	----	--------

GATES D-FS-1 SHEET 2			TOTAL	CROSSINGS							GPS FILE:				
TYPE OF CROSSING	ROAD	TELKOM	RAILWAY	NATIONAL ROAD	POWERLINE	RIVER	TRANSFORMER								
TOTAL							10kVA	25kVA	50kVA	100kVA					

PROPERTY OWNER DETAIL

FARM DESCRIPTION	REGISTERED OWNER	TELEPHONE No.	CONDITIONS

THIS CERTIFIES THAT THE POWERLINE IS BUILT ACCORDING TO THE SPANNING SHEET, POLE NUMBERS AS WELL AS ANY EQUIPMENT ARE AS INDICATED ON THE SPANNING SHEET.	----- SIGNATURE ----- DATE
---	-------------------------------------