

**SCREENING REPORT FOR AN ENVIRONMENTAL AUTHORIZATION OR
FOR A PART TWO AMENDMENT OF AN ENVIRONMENTAL AUTHORISATION
AS REQUIRED BY THE 2014 EIA REGULATIONS – PROPOSED DEVELOPMENT
FOOTPRINT ENVIRONMENTAL SENSITIVITY**

EIA Reference number:

Project name: Proposed residential development: Strathearn 2154/1 (RE), Bloemfontein

Project title: Proposed residential development on the farm Strathearn 2154/1 (RE),
Bloemfontein

Date screening report generated: 16/07/2019 13:48:27

Applicant: Nunes Properties (Pty) Ltd

Compiler: Lefatse Environmental Planning Services (Pty) Ltd

Compiler signature:

.....

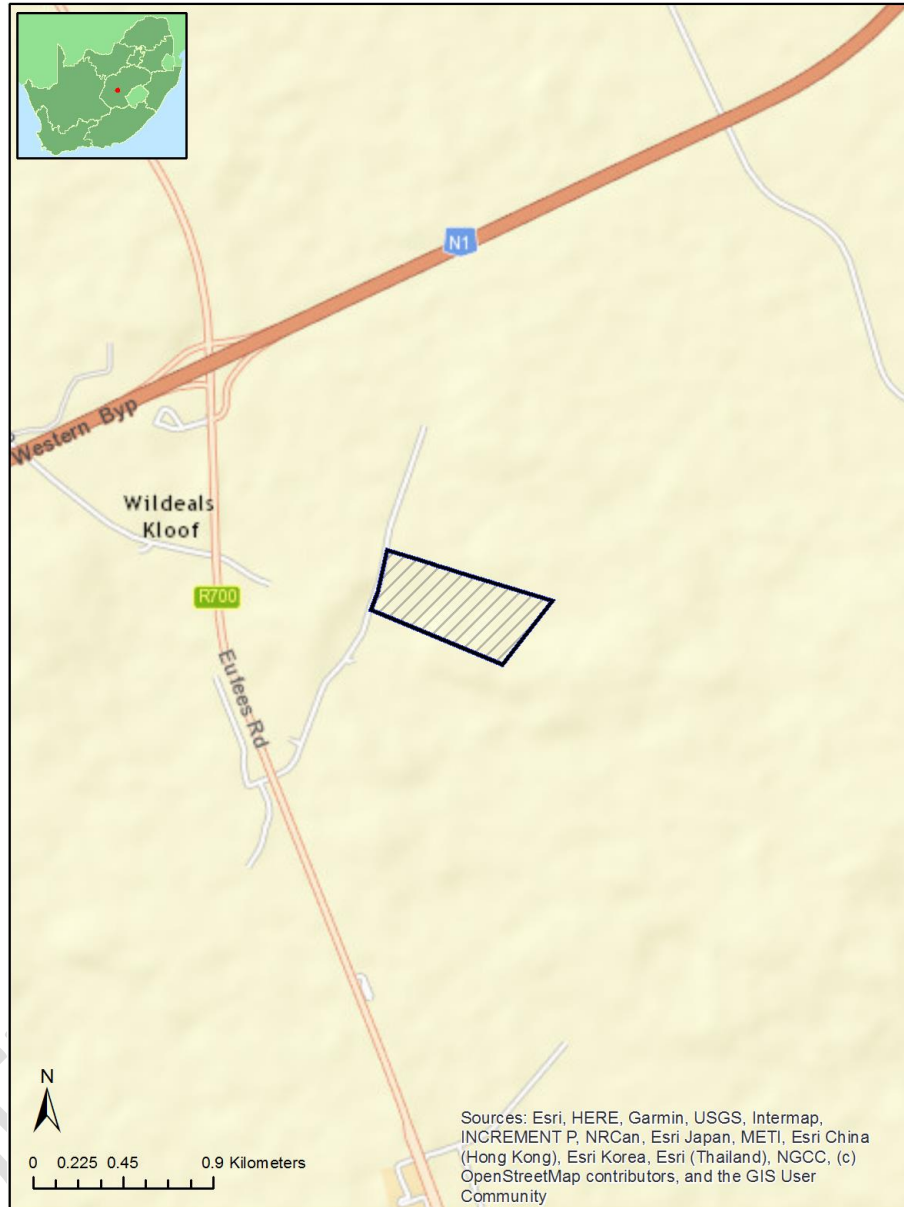
Table of Contents

Proposed Project Location	3
Orientation map 1: General location	3
Map of proposed site and relevant area(s)	4
Cadastral details of the proposed site	4
Wind and Solar developments with an approved Environmental Authorisation or applications under consideration within 30 km of the proposed area	5
Environmental Management Frameworks relevant to the application	5
Environmental screening results and assessment outcomes	6
Relevant development incentives, restrictions, exclusions or prohibitions	6
Map indicating proposed development footprint within applicable development incentive, restriction, exclusion or prohibition zones	7
Proposed Development Area Environmental Sensitivity	7
Specialist assessments identified	8
Results of the environmental sensitivity of the proposed area.	9
MAP OF RELATIVE AGRICULTURE THEME SENSITIVITY	10
MAP OF RELATIVE AQUATIC BIODIVERSITY THEME SENSITIVITY	11
MAP OF RELATIVE ARCHAEOLOGICAL AND CULTURAL HERITAGE THEME SENSITIVITY	12
MAP OF RELATIVE CIVIL AVIATION THEME SENSITIVITY	13
MAP OF RELATIVE PALEONTOLOGY THEME SENSITIVITY	14
MAP OF RELATIVE DEFENCE THEME SENSITIVITY	15
MAP OF RELATIVE TERRESTRIAL BIODIVERSITY THEME SENSITIVITY	16

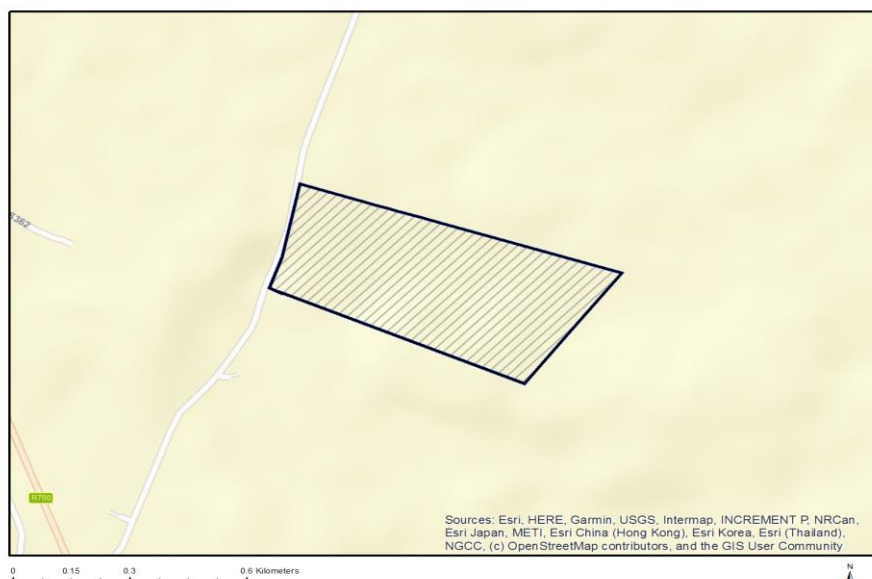
Proposed Project Location

Orientation map 1: General location

General Orientation: Proposed residential development: Strathearn 2154/1 (RE), Bloemfontein



Map of proposed site and relevant area(s)



Cadastral details of the proposed site

Property details:

No	Farm Name	Farm/Erf Number	Portion	Latitude	Longitude
1	TREDENHAM	2153	00000	-29.05113	26.23292
2	STRATHEARN	2154	00000	-29.04506	26.23771
3	STRATHEARN	2154	00001	-29.04768	26.23624

Development footprint¹ details:

Vertices	Latitude	Longitude
A	-29.047908782959	26.2326698303223
A	-29.0479202270508	26.2326641082764
A	-29.0478134155273	26.2324066162109
A	-29.0471057891846	26.2326946258545
A	-29.0454540252686	26.2331066131592
A	-29.0454883575439	26.2332286834717
A	-29.0458564758301	26.2345886230469
A	-29.0459232330322	26.2348289489746
A	-29.0460071563721	26.235143661499
A	-29.0460624694824	26.2353401184082
A	-29.0462207794189	26.2359294891357
A	-29.0463314056396	26.2363338470459
A	-29.0474720001221	26.2405319213867
A	-29.049976348877	26.2382946014404
A	-29.047908782959	26.2326698303223
B	-29.047908782959	26.2326698303223

¹ "development footprint", means the area within the site on which the development will take place and includes all ancillary developments for example roads, power lines, boundary walls, paving etc. which require vegetation clearance or which will be disturbed and for which the application has been submitted.

B	-29.0479202270508	26.2326641082764
B	-29.0478134155273	26.2324066162109
B	-29.0471057891846	26.2326946258545
B	-29.0454540252686	26.2331066131592
B	-29.0454883575439	26.2332286834717
B	-29.0458564758301	26.2345886230469
B	-29.0459232330322	26.2348289489746
B	-29.0460071563721	26.235143661499
B	-29.0460624694824	26.2353401184082
B	-29.0462207794189	26.2359294891357
B	-29.0463314056396	26.2363338470459
B	-29.0474720001221	26.2405319213867
B	-29.049976348877	26.2382946014404
B	-29.047908782959	26.2326698303223

Wind and Solar developments with an approved Environmental Authorisation or applications under consideration within 30 km of the proposed area

No	EIA Reference No	Classification	Status of application	Distance from proposed area (km)
1	14/12/16/3/3/1/1093	Solar PV	Approved	15.9
2	14/12/16/3/3/1/1092	Solar PV	Approved	15.9
3	14/12/16/3/3/1/564	Solar PV	Approved	5.4

Environmental Management Frameworks relevant to the application

No intersections with EMF areas found.

Environmental screening results and assessment outcomes

The following sections contain a summary of any development incentives, restrictions, exclusions or prohibitions that apply to the proposed development footprint as well as the most environmental sensitive features on the footprint based on the footprint sensitivity screening results for the application classification that was selected. The application classification selected for this report is:

Transformation of land | Indigenous vegetation | Transformation of land - Indigenous vegetation.

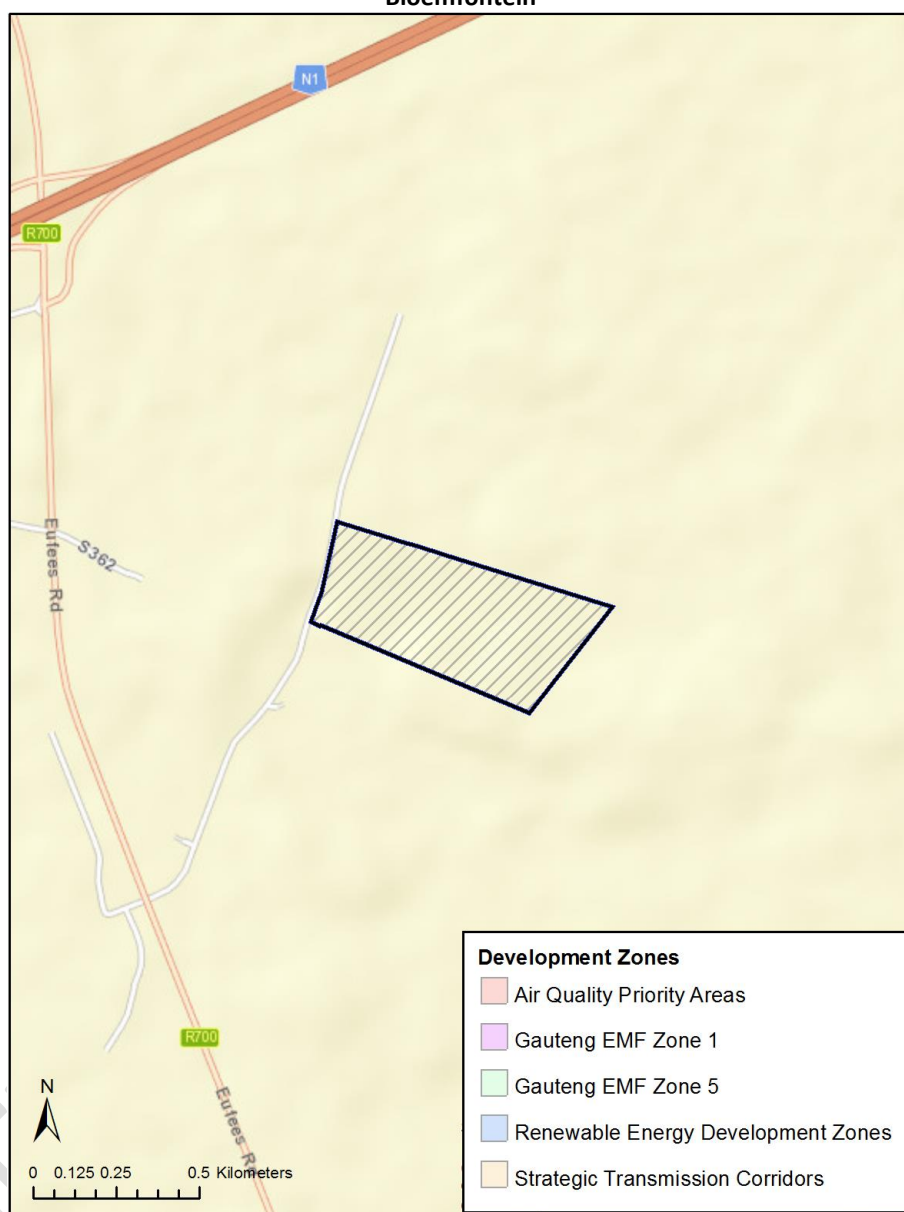
Relevant development incentives, restrictions, exclusions or prohibitions

The following development incentives, restrictions, exclusions or prohibitions and their implications that apply to this footprint are indicated below.

No intersection with any development zones found.

Map indicating proposed development footprint within applicable development incentive, restriction, exclusion or prohibition zones

Project Location: Proposed residential development: Strathearn 2154/1 (RE), Bloemfontein



Proposed Development Area Environmental Sensitivity

The following summary of the development footprint environmental sensitivities is identified. Only the highest environmental sensitivity is indicated. The footprint environmental sensitivities for the proposed development footprint as identified, are indicative only and must be verified on site by a suitably qualified person before the specialist assessments identified below can be confirmed.

Theme	Very High sensitivity	High sensitivity	Medium sensitivity	Low sensitivity
Agriculture Theme			X	
Aquatic Biodiversity Theme				X
Archaeological and Cultural		X		

Heritage Theme				
Civil Aviation Theme		X		
Paleontology Theme			X	
Defence Theme			X	
Terrestrial Biodiversity Theme	X			

Specialist assessments identified

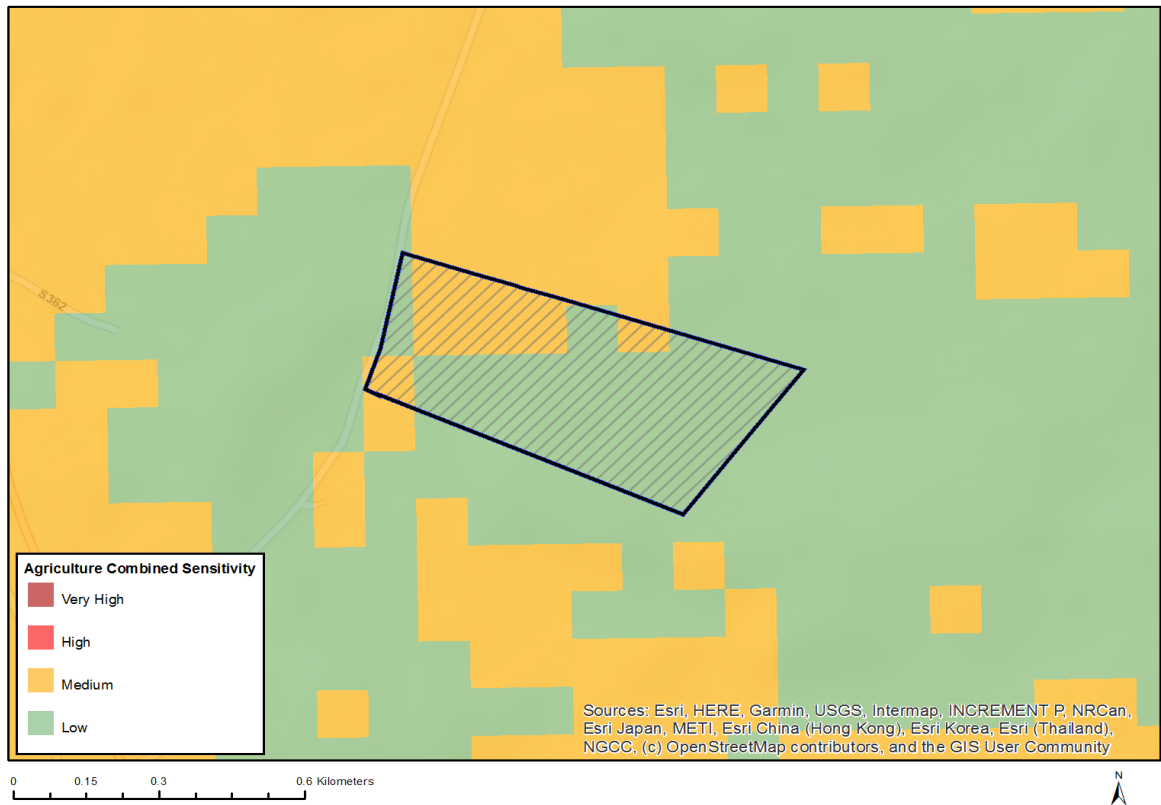
Based on the selected classification, and the environmental sensitivities of the proposed development footprint, the following list of specialist assessments have been identified for inclusion in the assessment report. It is the responsibility of the EAP to confirm this list and to motivate in the assessment report, the reason for not including any of the identified specialist study including the provision of photographic evidence of the footprint situation.

N o	Specialist assessment	Assessment Protocol
1	Landscape/Visual Impact Assessment	https://screening.environment.gov.za/ScreeningDownloads/Assessment/General/Appendix6.pdf
2	Archaeological and Cultural Heritage Impact Assessment	https://screening.environment.gov.za/ScreeningDownloads/Assessment/General/Appendix6.pdf
3	Palaeontology Impact Assessment	https://screening.environment.gov.za/ScreeningDownloads/Assessment/General/Appendix6.pdf
4	Terrestrial Biodiversity Impact Assessment	https://screening.environment.gov.za/ScreeningDownloads/Assessment/General/Appendix6.pdf
5	Aquatic Biodiversity Impact Assessment	https://screening.environment.gov.za/ScreeningDownloads/Assessment/General/Appendix6.pdf
6	Avian Impact Assessment	https://screening.environment.gov.za/ScreeningDownloads/Assessment/General/Appendix6.pdf
7	Socio-Economic Assessment	https://screening.environment.gov.za/ScreeningDownloads/Assessment/General/Appendix6.pdf

Results of the environmental sensitivity of the proposed area.

The following section represents the results of the screening for environmental sensitivity of the proposed footprint for relevant environmental themes associated with the project classification. It is the duty of the EAP to ensure that the environmental themes provided by the screening tool are comprehensive and complete for the project. Refer to the disclaimer.

MAP OF RELATIVE AGRICULTURE THEME SENSITIVITY

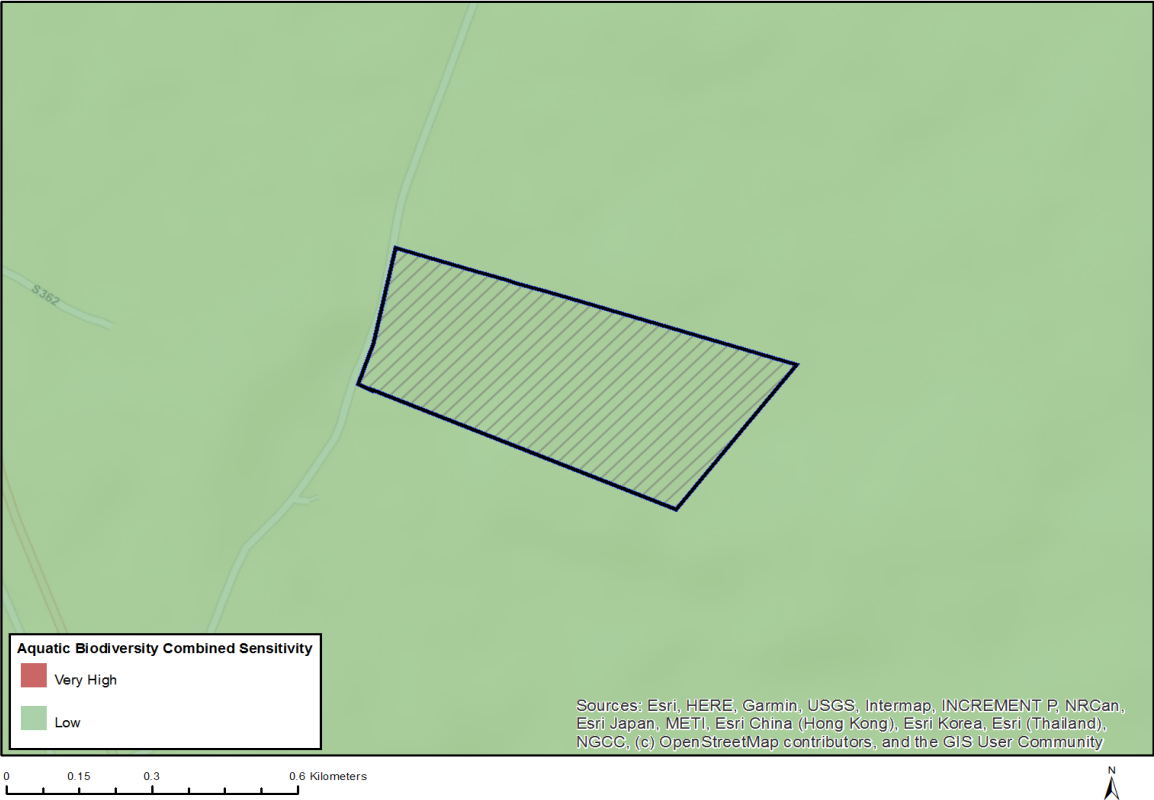


Very High sensitivity	High sensitivity	Medium sensitivity	Low sensitivity
		X	

Sensitivity Features:

Sensitivity	Feature(s)
Low	Land capability;01. Very low/02. Very low/03. Low-Very low/04. Low-Very low/05. Low
Medium	Land capability;06. Low-Moderate/07. Low-Moderate/08. Moderate

MAP OF RELATIVE AQUATIC BIODIVERSITY THEME SENSITIVITY

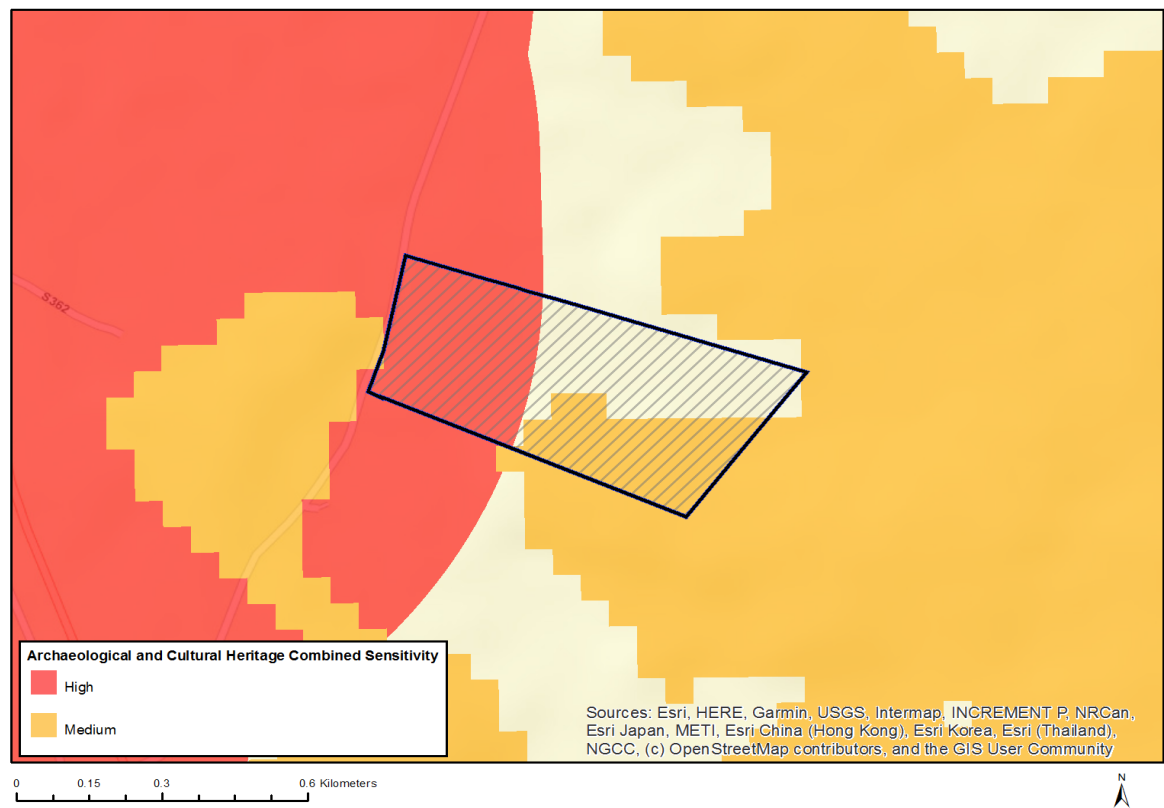


Very High sensitivity	High sensitivity	Medium sensitivity	Low sensitivity
			X

Sensitivity Features:

Sensitivity	Feature(s)
Low	Low Sensitivity Areas

MAP OF RELATIVE ARCHAEOLOGICAL AND CULTURAL HERITAGE THEME SENSITIVITY

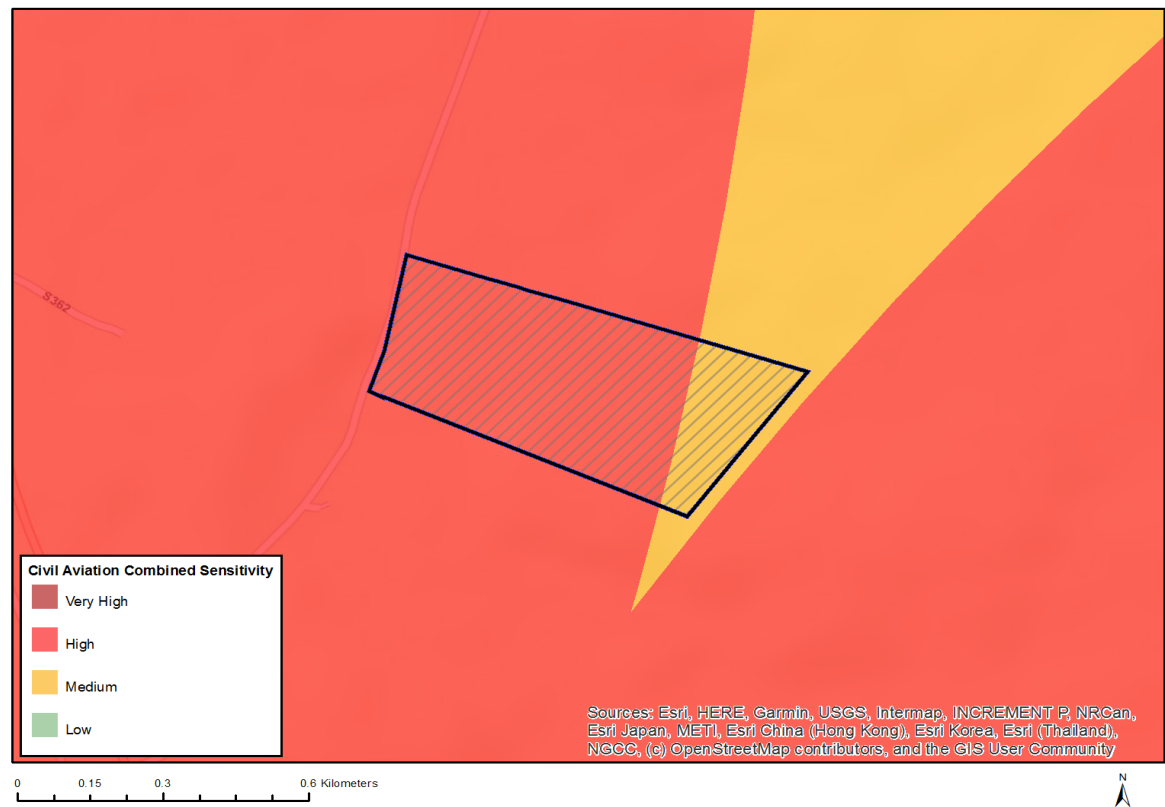


Very High sensitivity	High sensitivity	Medium sensitivity	Low sensitivity
	X		

Sensitivity Features:

Sensitivity	Feature(s)
High	Within 1 km of a protected area
Medium	Mountain or ridge

MAP OF RELATIVE CIVIL AVIATION THEME SENSITIVITY

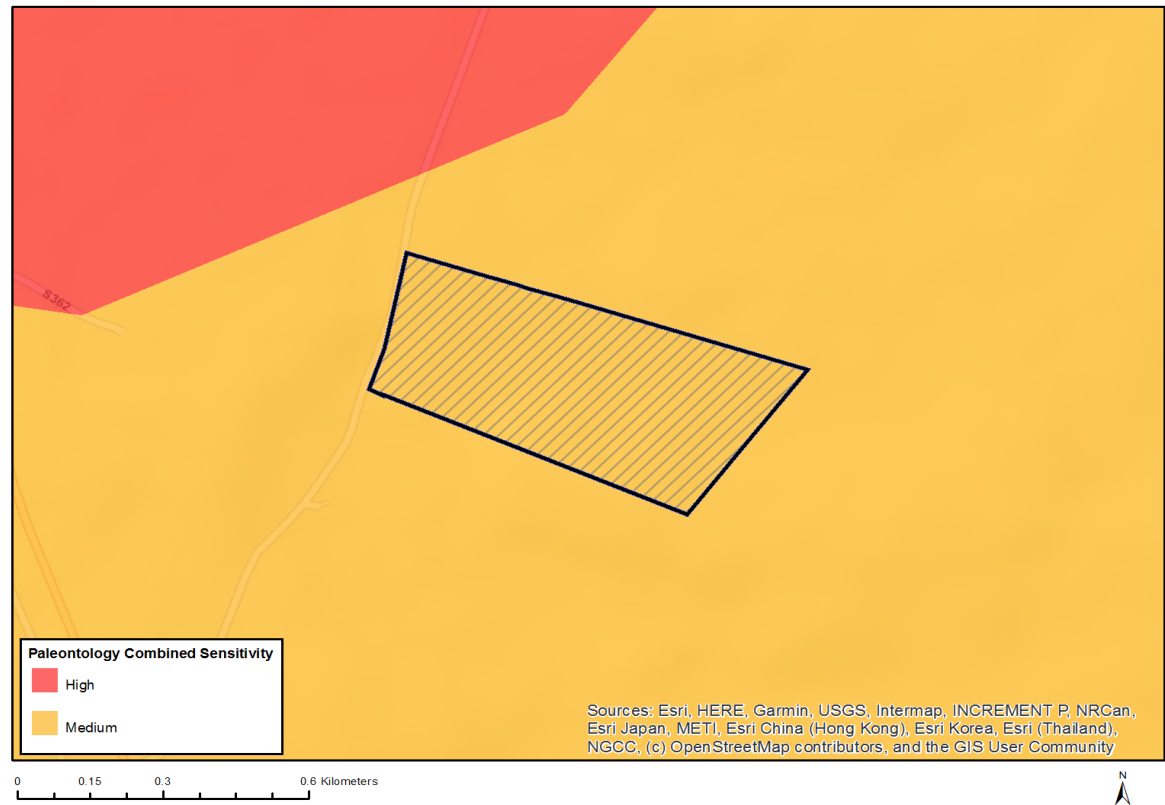


Very High sensitivity	High sensitivity	Medium sensitivity	Low sensitivity
	X		

Sensitivity Features:

Sensitivity	Feature(s)
High	Within 15 km of a civil aviation radar
High	Within 8 km of other civil aviation aerodrome
Medium	Within 5 km of an air traffic control or navigation site
Medium	Between 8 and 15 km of other civil aviation aerodrome

MAP OF RELATIVE PALEONTOLOGY THEME SENSITIVITY

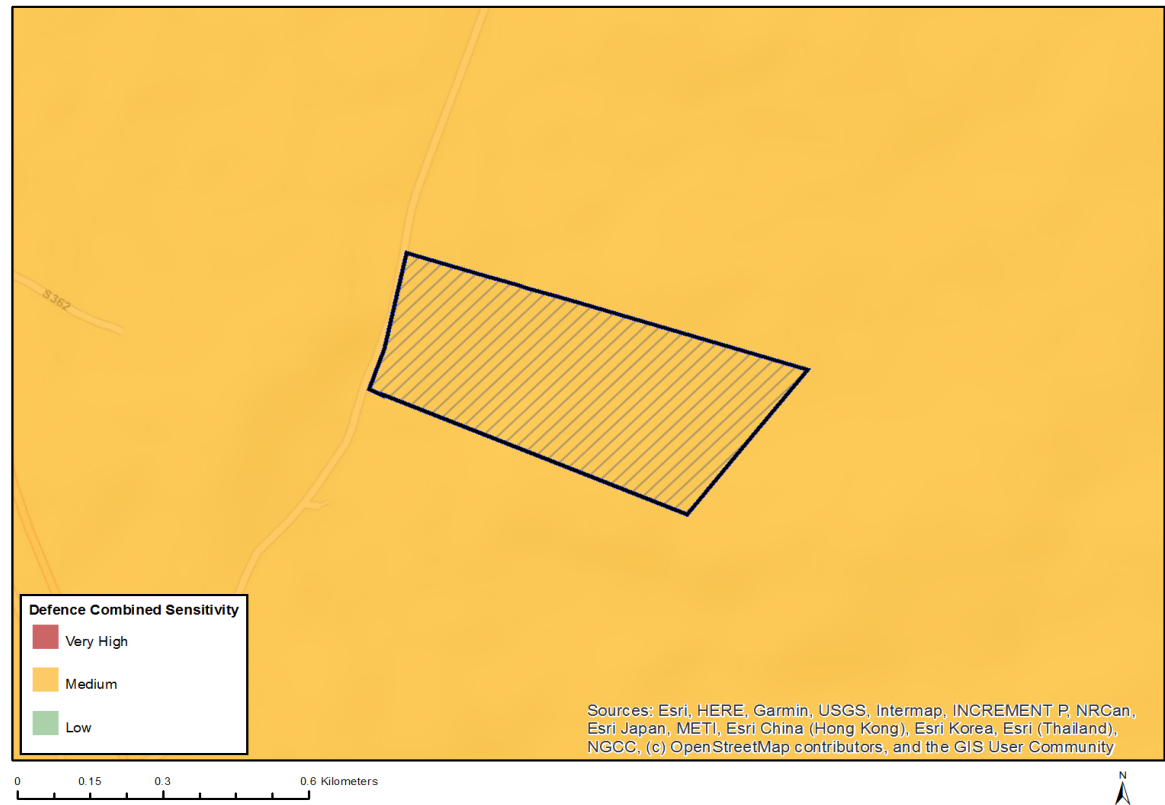


Very High sensitivity	High sensitivity	Medium sensitivity	Low sensitivity
		X	

Sensitivity Features:

Sensitivity	Feature(s)
Medium	Rock units with a medium paleontological sensitivity

MAP OF RELATIVE DEFENCE THEME SENSITIVITY

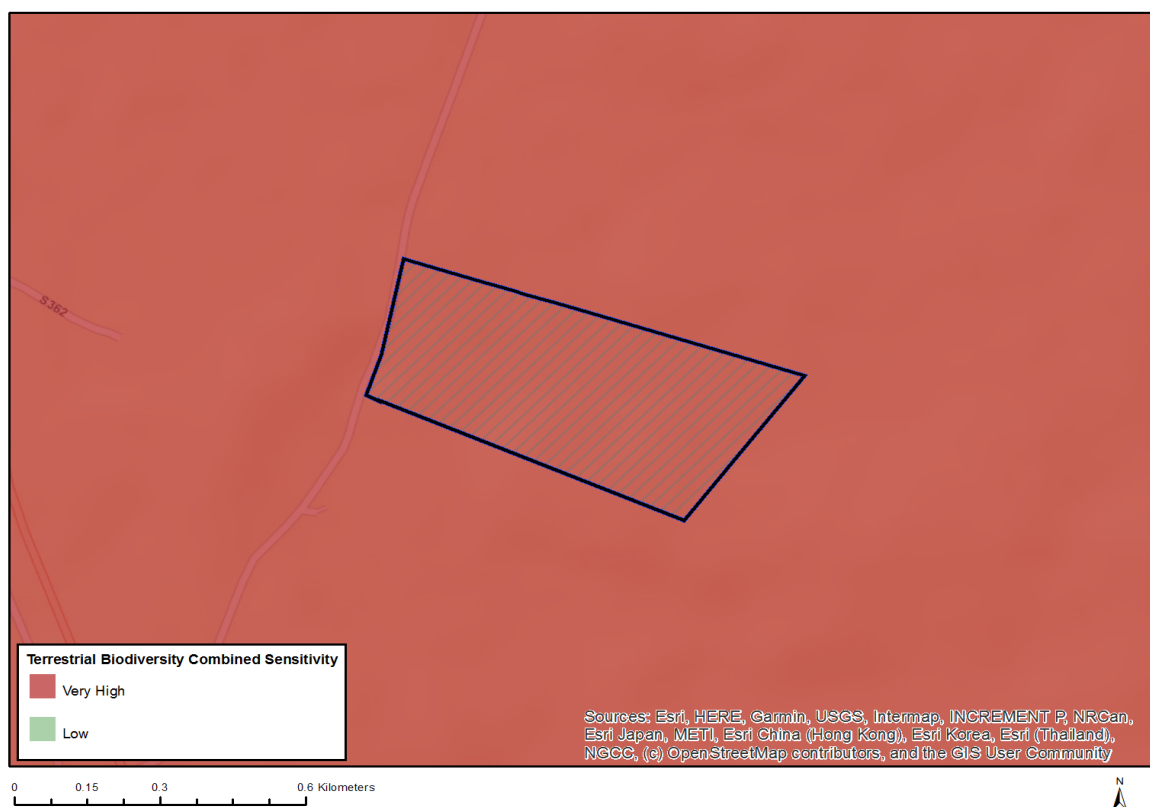


Very High sensitivity	High sensitivity	Medium sensitivity	Low sensitivity
		X	

Sensitivity Features:

Sensitivity	Feature(s)
Medium	Defence Site

MAP OF RELATIVE TERRESTRIAL BIODIVERSITY THEME SENSITIVITY



Very High sensitivity	High sensitivity	Medium sensitivity	Low sensitivity
X			

Sensitivity Features:

Sensitivity	Feature(s)
Very High	CBA,Conservation area,Protected area ,FEPA,Focus area for PAES