

- NOTES**
1. READ THIS DRAWING IN CONJUNCTION WITH THE ARCHITECTS DRAWINGS
 2. ALL DIMENSIONS MUST BE CHECKED ON SITE AND THE ENGINEER IS TO BE INFORMED IMMEDIATELY OF ANY DISCREPANCIES.
 3. ALL FOUNDATION EXCAVATIONS TO BE APPROVED BY ENGINEER PRIOR TO CONCRETING. ALL LOOSE MATERIAL IS TO BE REMOVED FROM THE EXCAVATION.
 4. PLACE ONE LAYER OF DPC AS BOND BREAKER BETWEEN LOAD BEARING WALLS AND CONCRETE SLAB.
 5. ALLOW FOR 10mm "SAGEX" OR "SOFT BOARD" VERTICAL EXPANSION JOINT BETWEEN THE FLOOR SLAB AND THE BRICKWORK.
 6. CONCRETE:
 - 6.1 WORK TO BE CARRIED OUT IN ACCORDANCE WITH SABS 1200-G.
 - 6.2 STEEL FIXING TO BE APPROVED BY THE ENGINEER PRIOR TO CONCRETING.
 - 6.3 CONCRETE STRENGTH (UNLESS SPECIFIED OTHERWISE):
 - a. 50mm SLINDING - 15 MPa
 - b. MASS CONCRETE FOUNDATIONS - 20MPa
 - c. REIN. CONCRETE FOUNDATIONS - 20MPa
 - d. COLUMNS, BEAMS, SLABS - 25MPa
 - 6.4 CONCRETE COVER (UNLESS SPECIFIED OTHERWISE):
 - a. FOUNDATIONS - 75mm
 - b. COLUMNS - 30mm
 - c. BEAMS SLABS - 30mm
 - 6.5 REINFORCING:
 - a. HIGH YIELD - 450MPa
 - b. MILD STEEL - 250MPa
 - c. MINIMUM LAP LENGTH - 45 x BAR DIAMETER

WATERPROOFING BY SPECIALIST

ALL SAP TIMBER ITEMS TO BE TREATED & ALL STEEL ITEMS TO BE HOT-DIPPED GALVANISED BEFORE INSTALLED ON SITE

ALL DIMENSIONS TO BE CHECKED ON SITE BEFORE COMMENCEMENT OF ANY CONSTRUCTION

FOR CONSTRUCTION

DATE	REVISION	DESCRIPTION
12/08/2013	A	CHANGES TO RC BASES

Any discrepancies between Architectural and Engineering Drawings to be reported to Architect and Engineer prior to construction.

PROJECT
HSE ASSANDRI
54 CHIAPPINI STREET, BO KAAP

ERF 924
GROUND FLOOR COLUMN LAYOUT

GROUND PRESSURE (kN/m ²)	-
CONCRETE STRENGTH (MPa)	SEE NOTES
LIVE LOADS (kN/m ²)	-

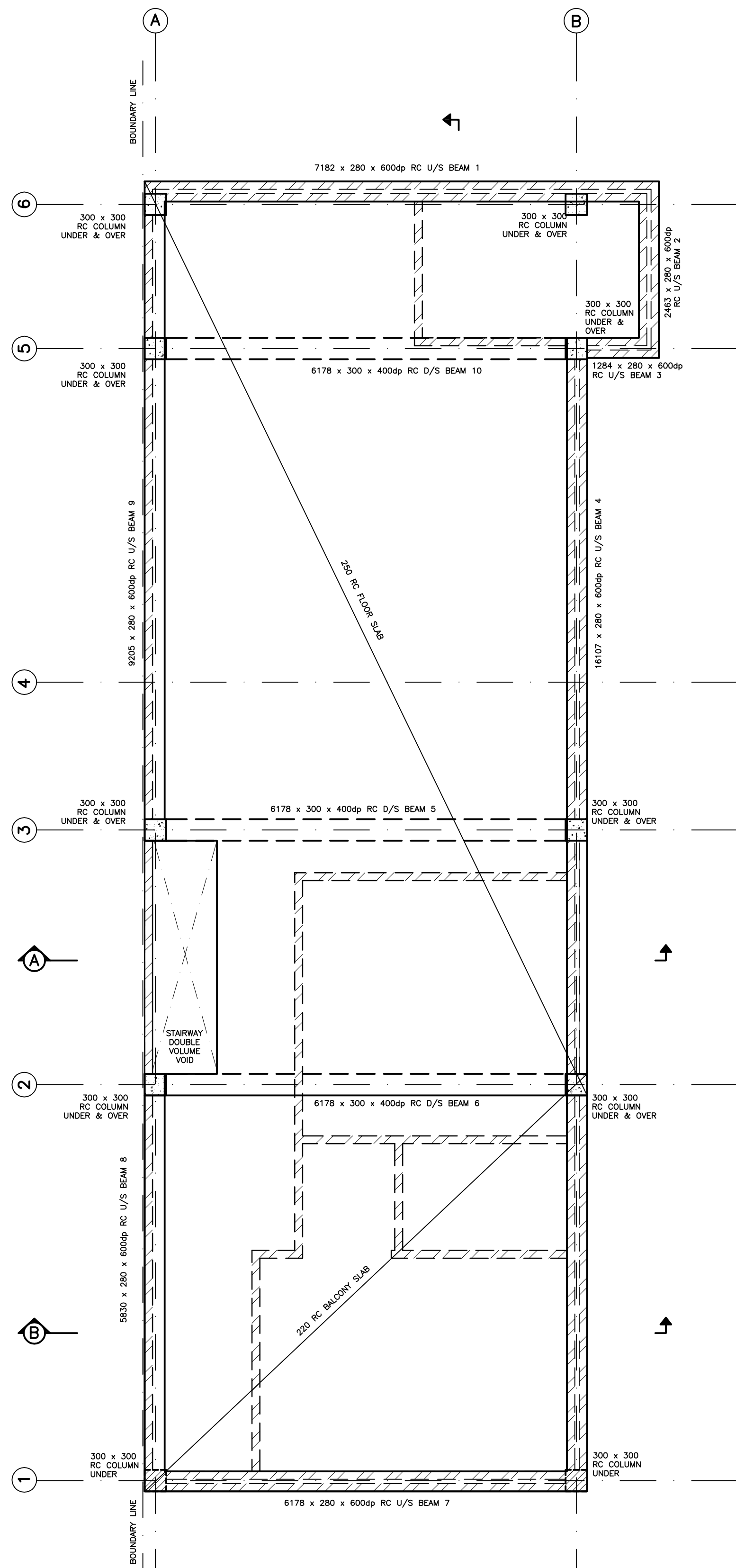
ARCHITECT : FLAVIO MANZO ARCHITECTURE
AUTOCAD DRAWING NO : 1349-13

DATE	DRAWN	CHECKED
27/06/2013	CLINT	

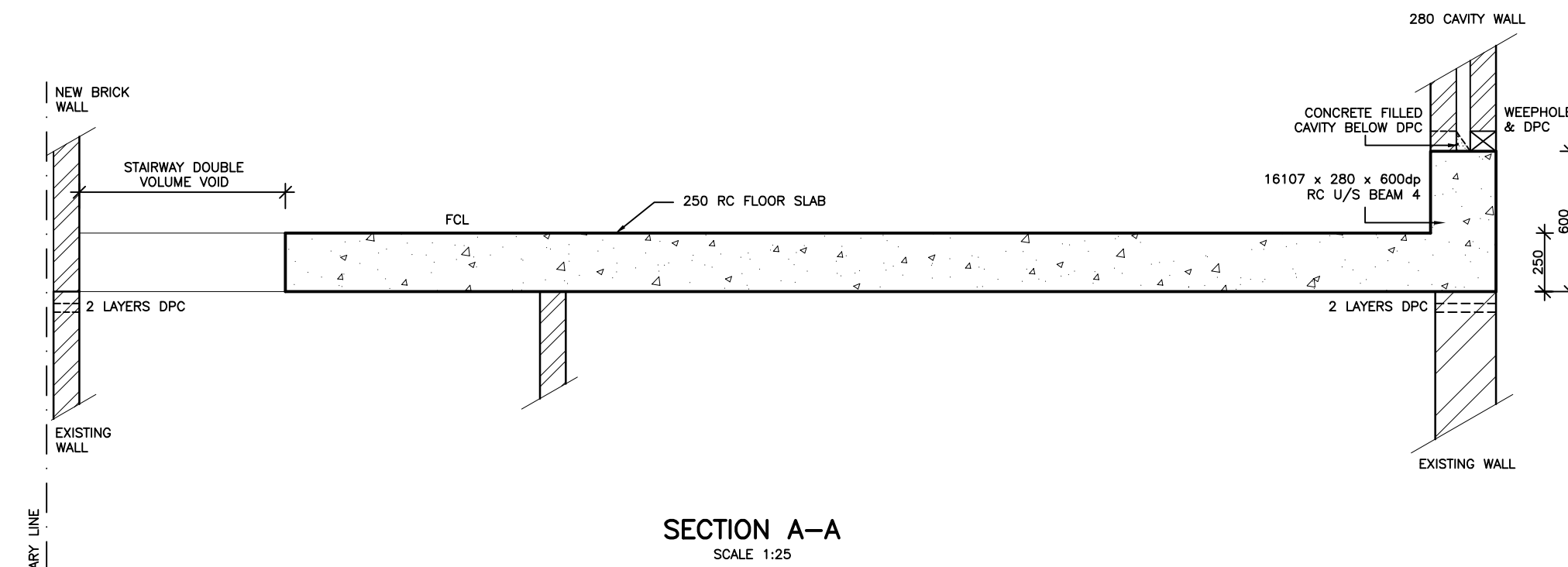
DRAWING NO. 1341-13-01 REV A SCALE AS SHOWN

GADOMSKI CONSULTING ENGINEERS
Studio 22 Victoria Junction, Prestwich Road, Green Point 8001
Tel (021) 421-7540 Fax (021) 421-7557
E-mail : info@gadomski.co.za

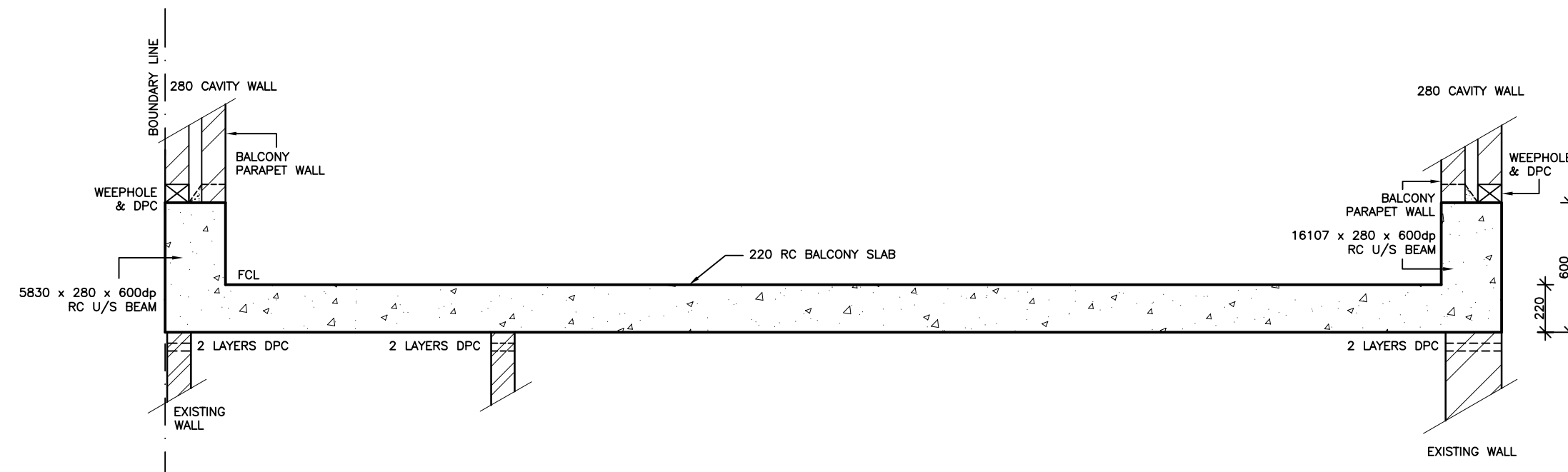
Copyright is vested in this document and no use or reproduction or duplication thereof may occur without the written consent of the designer, in terms of the Copyright Act (Act No.98 of 1978)



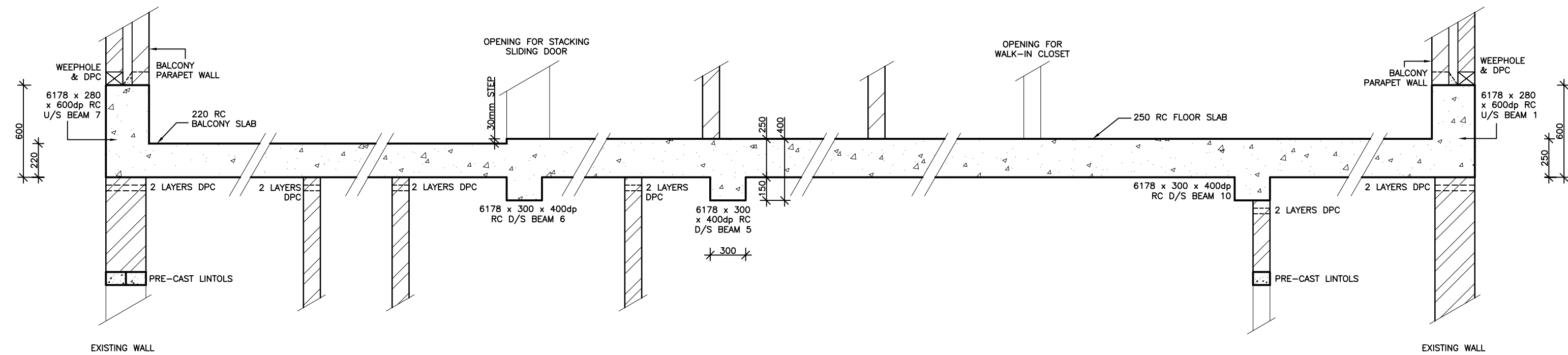
FIRST FLOOR LAYOUT
SCALE 1:50



SECTION A-A
SCALE 1:25



SECTION B-B
SCALE 1:25



SECTION C-C
SCALE 1:25

NOTES

1. READ THIS DRAWING IN CONJUNCTION WITH THE ARCHITECT'S DRAWINGS
2. ALL DIMENSIONS MUST BE CHECKED ON SITE AND THE ENGINEER IS TO BE INFORMED IMMEDIATELY OF ANY DISCREPANCIES.
3. ALL FOUNDATION EXCAVATIONS TO BE APPROVED BY ENGINEER PRIOR TO CONCRETING. ALL LOOSE MATERIAL IS TO BE REMOVED FROM THE EXCAVATION.
4. PLACE ONE LAYER OF DPC AS BOND BREAKER BETWEEN LOAD BEARING WALLS AND CONCRETE SLAB.
5. ALLOW FOR 10mm "SAGEX" OR "SOFT BOARD" VERTICAL EXPANSION JOINT BETWEEN THE FLOOR SLAB AND THE BRICKWORK.
6. CONCRETE:
 - 6.1 WORK TO BE CARRIED OUT IN ACCORDANCE WITH SABS 1200-G.
 - 6.2 STEEL FIXING TO BE APPROVED BY THE ENGINEER PRIOR TO CONCRETING.
- 6.3 CONCRETE STRENGTH (UNLESS SPECIFIED OTHERWISE):
 - a. 50mm SLINDING - 15 MPa
 - b. MASS CONCRETE FOUNDATIONS - 20MPa
 - c. REIN. CONCRETE FOUNDATIONS - 20MPa
 - d. COLUMNS, BEAMS, SLABS - 25MPa
- 6.4 CONCRETE COVER (UNLESS SPECIFIED OTHERWISE):
 - a. FOUNDATIONS - 75mm
 - b. COLUMNS - 30mm
 - c. BEAMS SLABS - 30mm
- 6.5 REINFORCING:
 - a. HIGH YIELD - 450MPa
 - b. MILD STEEL - 250MPa
 - c. MINIMUM LAP LENGTH - 45 x BAR DIAMETER

WATERPROOFING BY SPECIALIST

ALL SAP TIMBER ITEMS TO BE TREATED & ALL STEEL ITEMS TO BE HOT-DIPPED GALVANISED BEFORE INSTALLED ON SITE

ALL DIMENSIONS TO BE CHECKED ON SITE BEFORE COMMENCEMENT OF ANY CONSTRUCTION

FOR CONSTRUCTION

DATE	REVISION	CHANGES TO LAYOUT	DESCRIPTION
12/08/2013	A	CHANGES TO LAYOUT	

Any discrepancies between Architectural and Engineering Drawings to be reported to Architect and Engineer prior to construction.

PROJECT
HSE ASSANDRI
 54 CHIAPPINI STREET, BO KAAP
 ERF 924
 FIRST FLOOR LAYOUT

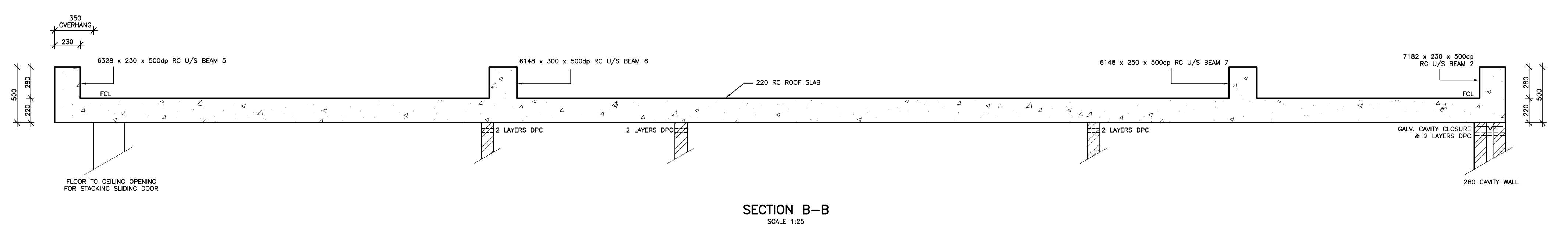
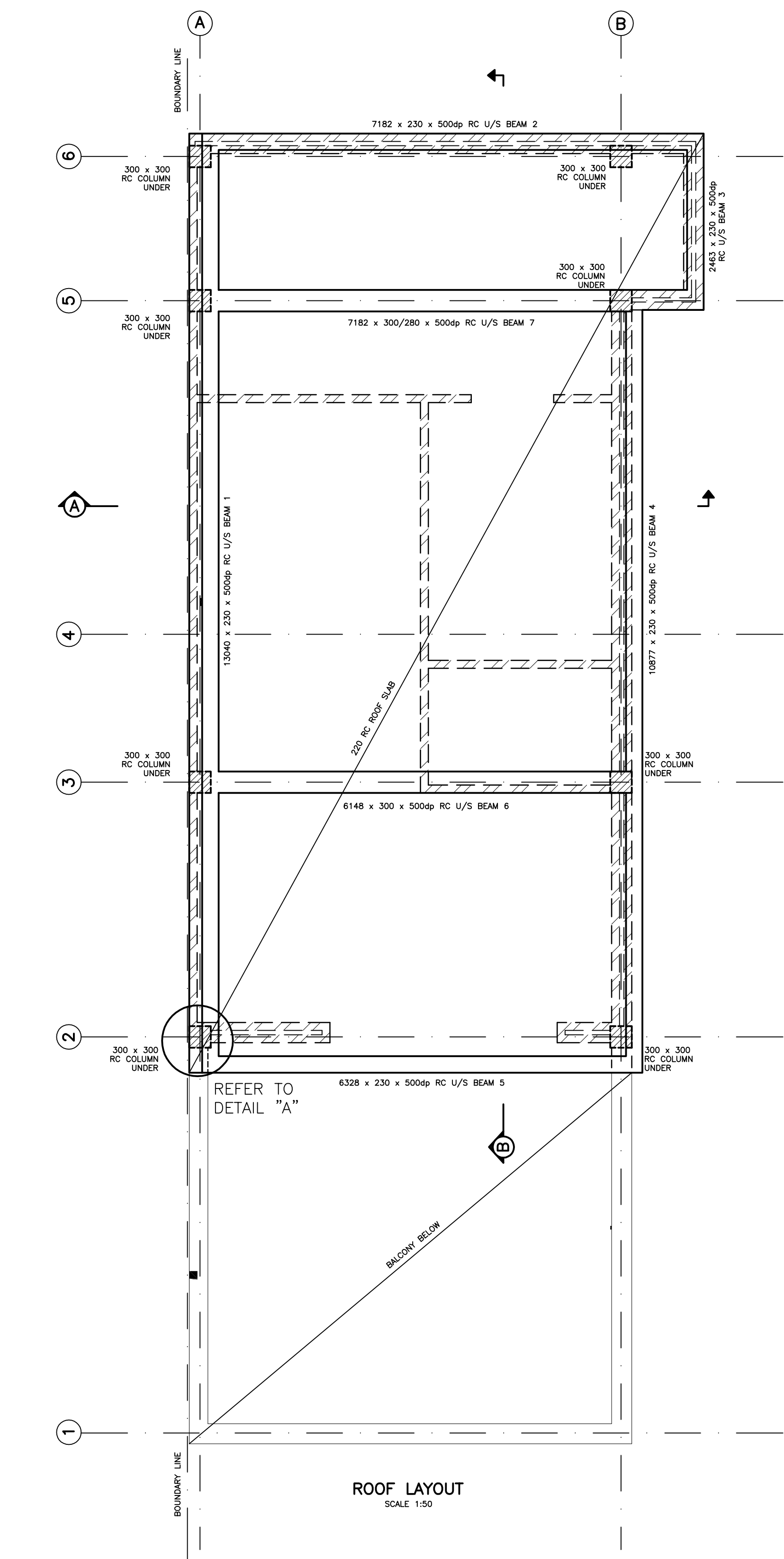
GROUND PRESSURE (kN/m ²)	-
CONCRETE STRENGTH (MPa)	SEE NOTES
LIVE LOADS (kN/m ²)	-

ARCHITECT : FLAVIO MANZO ARCHITECTURE
 AUTOCAD DRAWING NO : 1349-13

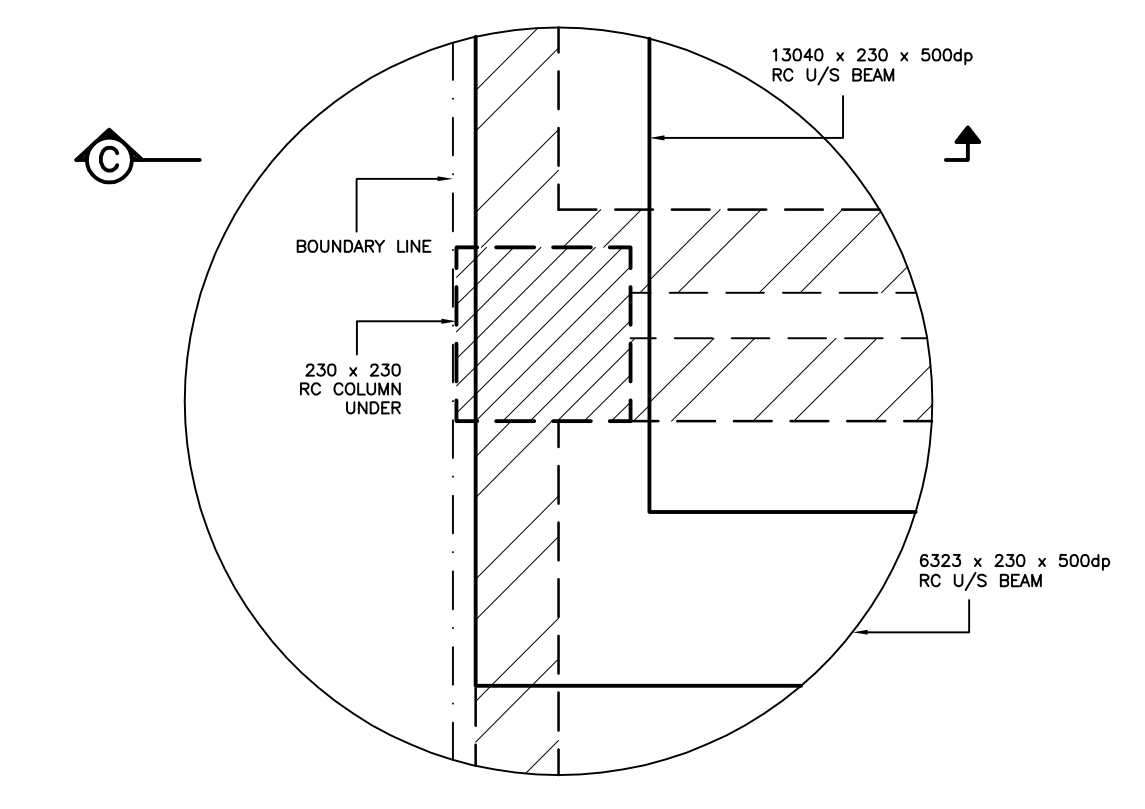
DATE	DRAWN	CHECKED
27/06/2013	CLINT	
DRAWING NO.	SCALE	AS SHOWN
1341-13-02 REV A		

GADOMSKI CONSULTING ENGINEERS
 Studio 22 Victoria Junction, Prestwich Road, Green Point 8001
 Tel (021) 421-7540 Fax (021) 421-7557
 E-mail : info@gadomski.co.za

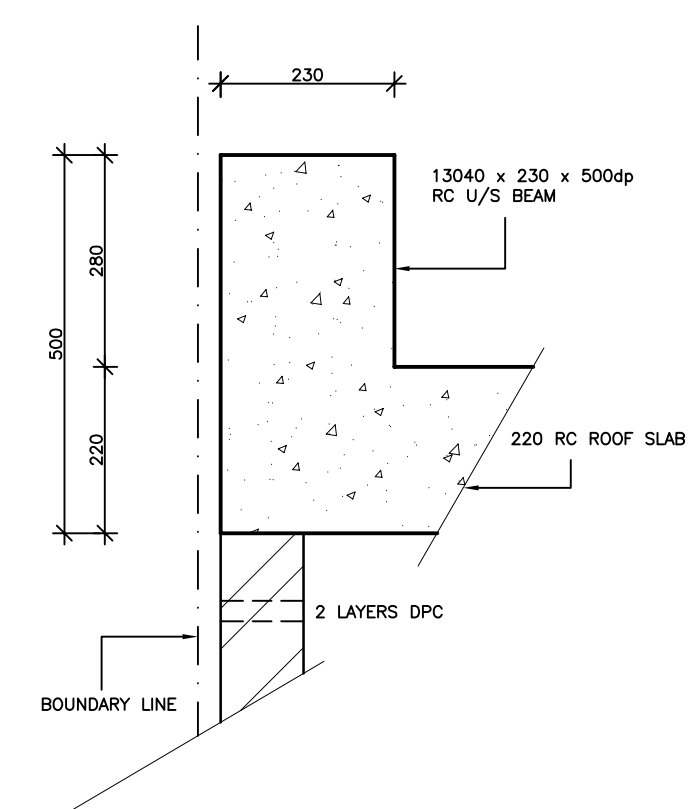
Copyright is vested in this document and no use or reproduction or duplication thereof may occur without the written consent of the designer, in terms of the Copyright Act (Act No.98 of 1978)



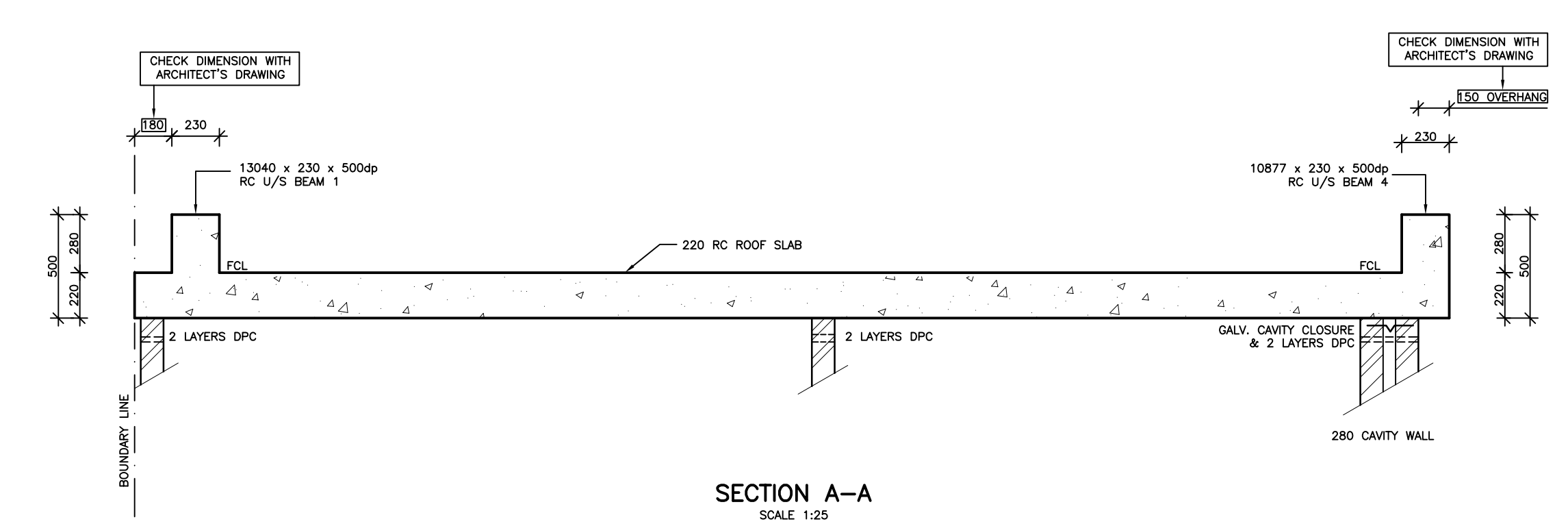
SECTION B-B
SCALE 1:25



DETAIL A
SCALE 1:10



SECTION C-C
SCALE 1:10



SECTION A-A
SCALE 1:25

- NOTES**
1. READ THIS DRAWING IN CONJUNCTION WITH THE ARCHITECTS DRAWINGS
 2. ALL DIMENSIONS MUST BE CHECKED ON SITE AND THE ENGINEER IS TO BE INFORMED IMMEDIATELY OF ANY DISCREPANCIES.
 3. ALL FOUNDATION EXCAVATIONS TO BE APPROVED BY ENGINEER PRIOR TO CONCRETING. ALL LOOSE MATERIAL IS TO BE REMOVED FROM THE EXCAVATION.
 4. PLACE ONE LAYER OF DPC AS BOND BREAKER BETWEEN LOAD BEARING WALLS AND CONCRETE SLAB.
 5. ALLOW FOR 10mm "SAGEX" OR "SOFT BOARD" VERTICAL EXPANSION JOINT BETWEEN THE FLOOR SLAB AND THE BRICKWORK.
 6. CONCRETE:
 - 6.1 WORK TO BE CARRIED OUT IN ACCORDANCE WITH SABS 1200-G.
 - 6.2 STEEL FIXING TO BE APPROVED BY THE ENGINEER PRIOR TO CONCRETING.
 - 6.3 CONCRETE STRENGTH (UNLESS SPECIFIED OTHERWISE):
 - a. 50mm SLABING - 15 MPa
 - b. MASS CONCRETE FOUNDATIONS - 20MPa
 - c. REIN. CONCRETE FOUNDATIONS - 20MPa
 - d. COLUMNS, BEAMS, SLABS - 25MPa
 - 6.4 CONCRETE COVER (UNLESS SPECIFIED OTHERWISE):
 - a. FOUNDATIONS - 75mm
 - b. COLUMNS - 30mm
 - c. BEAMS SLABS - 30mm
 - 6.5 REINFORCING:
 - a. HIGH YIELD - 450MPa
 - b. MILD STEEL - 250MPa
 - c. MINIMUM LAP LENGTH - 45 x BAR DIAMETER

WATERPROOFING BY SPECIALIST

ALL SAP TIMBER ITEMS TO BE TREATED & ALL STEEL ITEMS TO BE HOT-DIPPED GALVANISED BEFORE INSTALLED ON SITE

ALL DIMENSIONS TO BE CHECKED ON SITE BEFORE COMMENCEMENT OF ANY CONSTRUCTION

FOR CONSTRUCTION

DATE	REVISION	DESCRIPTION
12/08/2013	A	UPSTAND RC BEAMS ADDED TO ROOF SLAB

Any discrepancies between Architectural and Engineering Drawings to be reported to Architect and Engineer prior to construction.

PROJECT
HSE ASSANDRI
54 CHIAPPINI STREET, BO KAAP

ERF 924
ROOF LAYOUT

GROUND PRESSURE (kN/m ²)	-
CONCRETE STRENGTH (MPa)	SEE NOTES
LIVE LOADS (kN/m ²)	-

ARCHITECT : FLAVIO MANZO ARCHITECTURE
AUTOCAD DRAWING NO : 1341-13

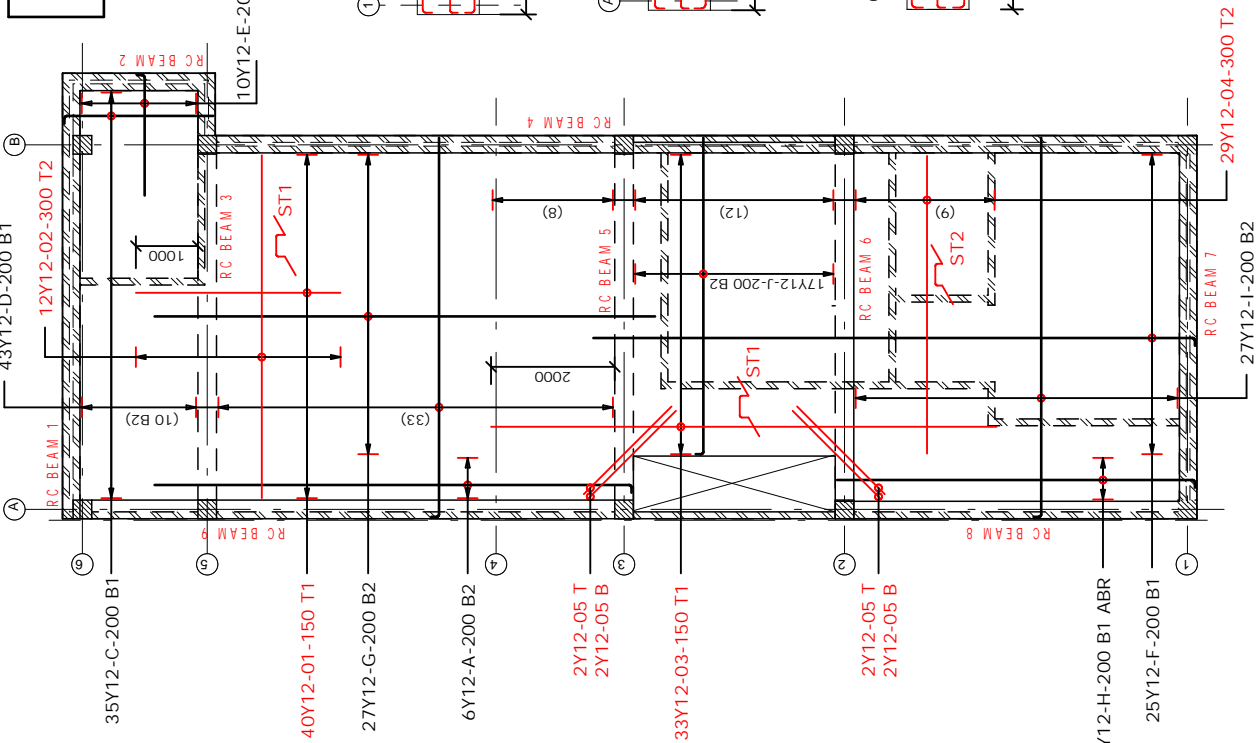
DATE	DRAWN	CHECKED
27/06/2013	CLINT	

DRAWING NO. 1341-13-03 REV A AS SHOWN

GADOMSKI CONSULTING ENGINEERS
Studio 22 Victoria Junction, Prestwich Road, Green Point 8001
Tel (021) 421-7540 Fax (021) 421-7557
E-mail : info@gadomski.co.za

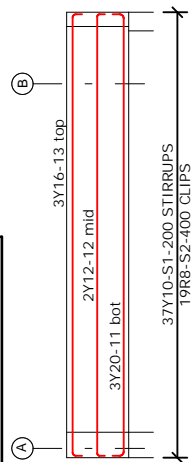
Copyright is vested in this document and no use or reproduction or duplication thereof may occur without the written consent of the designer, in terms of the Copyright Act (Act No.98 of 1978)

MEMBER	No OF	BARS PER MEMB	DIA.	LENGTH	TOTAL NUM- BER	MARK	S C	B E N D I N G						
								A	B	C	D	E/r		
Bot Rebar	1	6	Y12	7800	6	A	34	7690						
		35	Y12	2500	35	C	34	2400						
		43	Y12	6200	43	D	34	6110						
		10	Y12	2050	10	E	34	1940						
		25	Y12	9800	25	F	34	9700						
		27	Y12	8050	27	G	20	(8070)						
		4	Y12	5900	4	H	34	5770						
		27	Y12	6200	27	I	34	6110						
		17	Y12	5200	17	J	34	5100						
Top Rebar	1	40	Y12	3300	40	01	20	(3300)						
		12	Y12	5500	12	02	20	(5530)						
		33	Y12	8150	33	03	20	(8150)						
		29	Y12	4800	29	04	20	(4800)						
		8	Y12	2000	8	05	20	(2000)						
STOOLS	1	67	Y10	1250	67	ST1	83	350	140	350	(350)			
		18	Y10	1200	18	ST2	83	350	110	350	(350)			
BEAM 1	1	3	Y20	7400	3	11	35	7120						
		2	Y12	7350	2	12	35	7120						
		3	Y16	7350	3	13	35	7120						
		37	Y10	1650	37	S1	60	540	220					
		19	R8	450	19	S2	35	220						
BEAM 2	1	6	Y16	2650	6	14	35	2400						
		2	Y12	2600	2	15	35	2400						
		13	Y10	1650	13	S1	60	540	220					
		7	R8	450	7	S2	35	220						
BEAM 4	1	3	Y16	10000	3	17	34	9850						
		3	Y16	7600	3	18	34	7460						
		3	Y16	4750	3	19	34	4600						
		3	Y20	7550	3	20	20	(7550)						
		3	Y16	5600	3	21	34	5490						
		2	Y12	9750	2	22	34	9650						
		2	Y12	7400	2	23	34	7290						
		82	Y10	1650	82	S1	60	540	220					
		41	R8	450	41	S2	35	220						
BEAM 7	1	3	Y20	6400	3	24	35	6110						
		3	Y16	6350	3	25	35	6110						
		2	Y12	6300	2	26	35	6110						
		32	Y10	1650	32	S1	60	540	220					
		16	R8	450	16	S2	35	220						
BEAM 8	1	3	Y20	6050	3	27	35	5770						
		3	Y16	6000	3	28	35	5770						
		2	Y12	6000	2	29	35	5770						
		30	Y10	1650	30	S1	60	540	220					
		15	R8	450	15	S2	35	220						
	8	10	12	16	20	25	32	40	TOT	Date	2013/08/05			
R	17								17	Det. by	Aalimah			
Y		262	1655	251	203				2371	Ref Dwg				
TOT	17	262	1655	251	203				2388	Job No				
GADOMSKI					HOUSE ASSANDRI					Revision				
CONSULTING ENGINEERS					FIRST FLOOR LAYOUT					Schedule No		FFL/SLAB/01		
STUDIO 22 VICTORIA JUNCTION GREENPOINT 8001 TEL. 4217540 FAX. 4217557					250mm RC FIRST FLOOR SLAB									

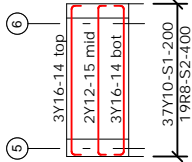


COVER = 30mm

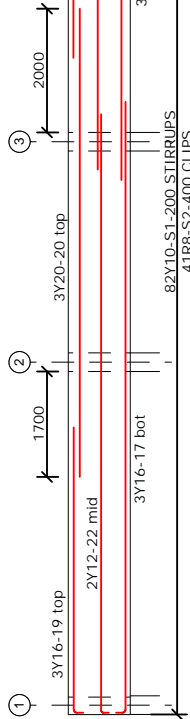
67Y10-ST1-1000 STOOLS
18Y10-ST2-1000 STOOLS



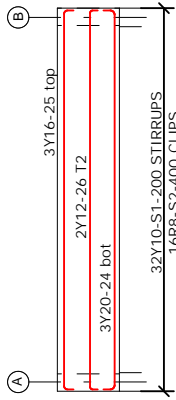
280x600 R.C. BEAM 1



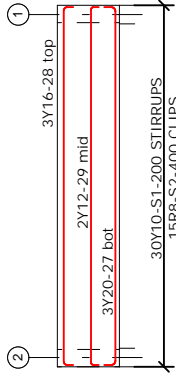
280x600 R.C. BEAM 2



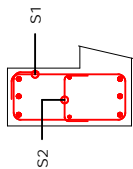
280x600 R.C. BEAM 4



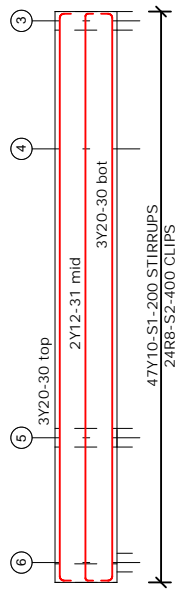
280x600 R.C. BEAM 7



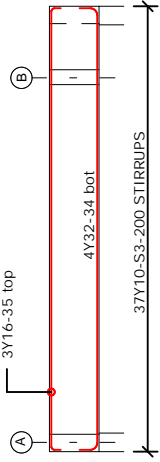
280x600 R.C. BEAM 8



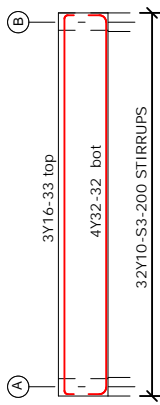
280x600 R.C. BEAM 5



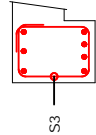
280x600 R.C. BEAM 9



300x400 R.C. D/S BEAM 3



300x400 R.C. D/S BEAM 6 & 5



280x600 R.C. BEAM 3

250mm RC 1st FLOOR SLAB

Refer Bending Schedule

FFL/SLAB/01

Ref Dwg

GADOMSKI
CONSULTING ENGINEERS

HOUSE ASSANDRI
FIRST FLOOR LAYOUT
250mm RC FIRST FLOOR SLAB

Revision

Schedule No

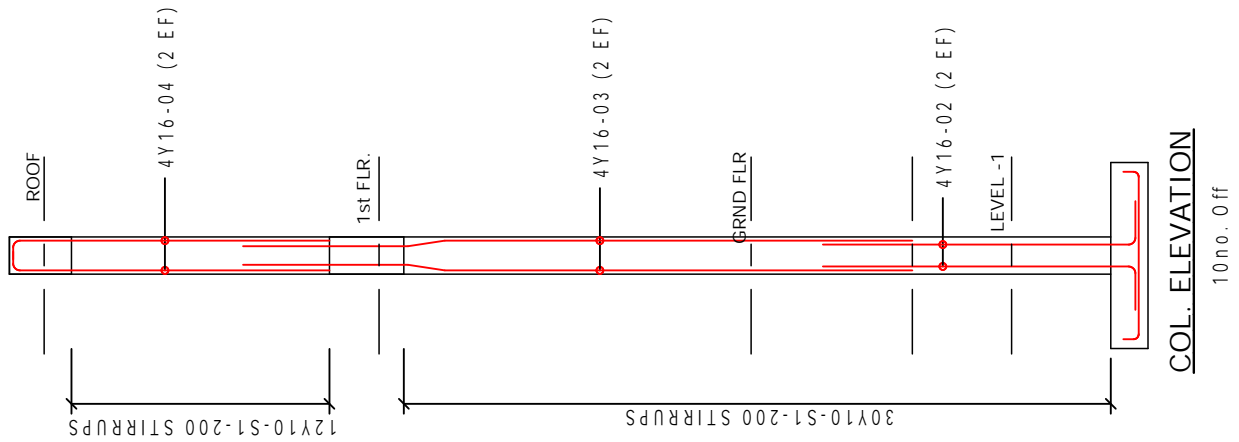
FFL/SLAB/01a

STUDIO 22 VICTORIA JUNCTION
GREENPOINT 8001
TEL. 4217540 FAX. 4217557

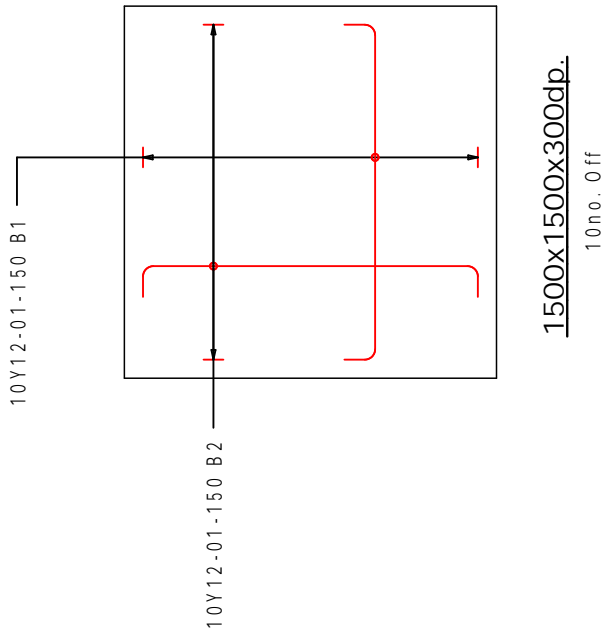
MEMBER	No OF	BARS PER MEMB	DIA.	LENGTH	TOTAL NUM- BER	MARK	S C	B E N D I N G						
								A	B	C	D	E/r		
BEAM 9	1	6	Y20	9450	6	30	35	9140	220					
		2	Y12	9350	2	31	35	9140						
		30	Y10	1650	30	S1	60	540						
		15	R8	450	15	S2	35	220						
BEAMS 6 & 5	2	4	Y32	6550	8	32	35	6110	240					
		3	Y16	6350	6	33	35	6110						
		32	Y10	1300	64	S3	60	340						
BEAM 3	1	4	Y32	7550	4	34	35	7120	240					
		3	Y16	7350	3	35	35	7120						
		37	Y10	1300	37	S3	60	340						
	8	10	12	16	20	25	32	40	TOT	Date	2013/08/05			
R	3								3	Det. by	Aalimah			
Y		111	17	95	140		521		884	Ref Dwg				
TOT	3	111	17	95	140		521		887	Job No				
GADOMSKI				HOUSE ASSANDRI						Revision				
CONSULTING ENGINEERS				FIRST FLOOR LAYOUT						Schedule No		FFL/SLAB/02		
STUDIO 22 VICTORIA JUNCTION GREENPOINT 8001 TEL. 4217540 FAX. 4217557				250mm RC FIRST FLOOR SLAB										

MEMBER	No OF	BARS PER MEMB	DIA.	LENGTH	TOTAL NUM- BER	MARK	S C	B E N D I N G						
								A	B	C	D	E/r		
1500x1500 x300dp RC Bases	10	20	Y12	1550	200	01	35	1350						
300x300 RC Cols	10	4	Y16	2850	40	02	37	350	(2520)					
		4	Y16	5400	40	03	41	3770	300	(1330)	61			
		4	Y16	2700	40	04	34	2550						
		42	Y12	1100	420	S1	60	240	240					
	8	10	12	16	20	25	32	40	TOT	Date	2013/08/12			
R										Det. by	Aalimah			
Y			685	691					1377	Ref Dwg				
TOT			685	691					1377	Job No				
GADOMSKI				HOUSE ASSANDRI						Revision				
CONSULTING ENGINEERS				FOUNDATION LAYOUT						Schedule No		FL/BASES/01		
STUDIO 22 VICTORIA JUNCTION GREENPOINT 8001 TEL. 4217540 FAX. 4217557				RC BASES & RC COLUMNS										

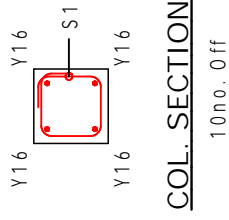
COVER :
 RC Bases = 75mm
 RC Cols. = 30mm



COL. ELEVATION
 10no. 0ff



1500x1500x300dp.
 10no. 0ff



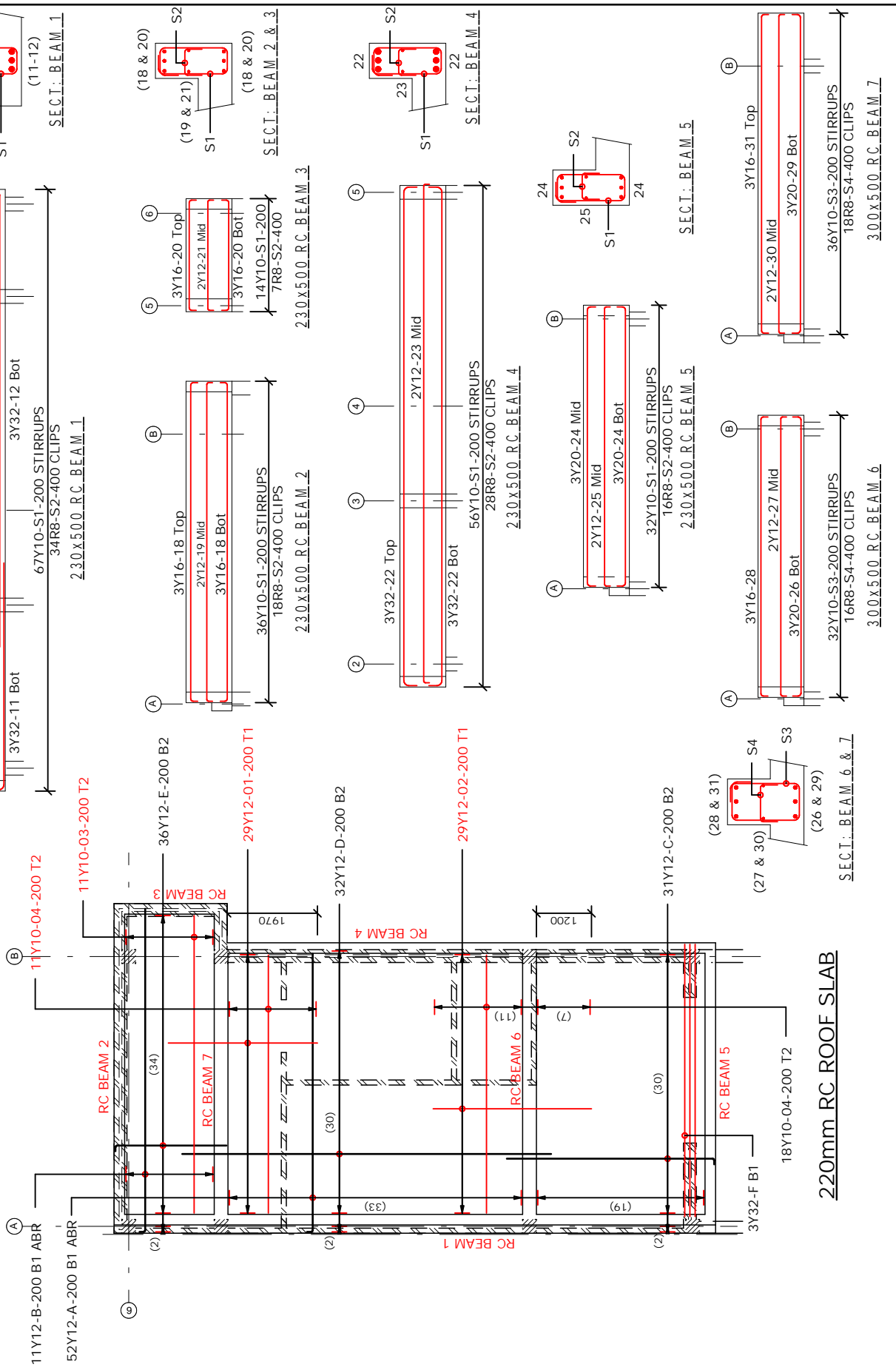
COL. SECTION
 10no. 0ff

Refer Bending Schedule	FL/BASES/01	Ref Dwg	
GADOMSKI CONSULTING ENGINEERS STUDIO 22 VICTORIA JUNCTION GREENPOINT 8001 TEL. 4217540 FAX. 4217557	HOUSE ASSANDRI FOUNDATION LAYOUT RC BASES & RC COLUMNS	Revision	
		Schedule No	FL/BASES/01a

MEMBER	No OF	BARS PER MEMB	DIA.	LENGTH	TOTAL NUM- BER	MARK	S C	B E N D I N G				
								A	B	C	D	E/r
220mm RC Roof Slab	1	52	Y12	6150	52	A	34	6060				
		11	Y12	7150	11	B	34	7040				
		36	Y12	2550	36	E	34	2420				
		32	Y12	8050	32	D	20	(8040)				
		32	Y12	4650	32	C	34	4520				
		3	Y32	5900	3	F	20	(5930)				
		29	Y12	3250	29	01	20	(3250)				
		11	Y10	6450	11	03	20	(6480)				
		29	Y10	5600	29	04	20	(5620)				
		29	Y12	3450	29	02	20	(3450)				
STOOLS		42	Y10	1200	42	ST1	83	350	110	350	(350)	
230x500 RC BEAM 1	1	3	Y32	5150	3	11	34	4940				
		3	Y32	10150	3	12	34	9940				
		3	Y32	6500	3	13	34	6270				
		3	Y32	5400	3	14	20	(5420)				
		3	Y32	4800	3	15	34	4550				
		2	Y12	5050	2	16	34	4940				
		2	Y12	10050	2	17	34	9940				
		67	Y10	1350	67	S1	60	440	170			
		34	R8	400	34	S2	35	170				
230x500 RC BEAM 2	1	6	Y16	7200	6	18	35	6940				
		2	Y12	7150	2	19	35	6940				
		36	Y10	1350	36	S1	60	440	170			
		18	R8	400	18	S2	35	170				
230x500 RC BEAM 3	1	6	Y16	2650	6	20	35	2400				
		2	Y12	2600	2	21	35	2400				
		14	Y10	1350	14	S1	60	440	170			
		7	R8	400	7	S2	35	170				
230x500 RC BEAM 4	1	6	Y32	11300	6	22	35	10860				
		2	Y12	11050	2	23	35	10860				
		32	Y10	1350	32	S1	60	440	170			
		16	R8	400	16	S2	35	170				
230x500 RC BEAM 5	1	6	Y20	6350	6	24	35	6080				
		2	Y12	6300	2	25	35	6080				
		32	Y10	1350	32	S1	60	440	170			
		16	R8	400	16	S2	35	170				
300x500 RC BEAM 6	1	3	Y20	6350	3	26	35	6080				
		2	Y12	6300	2	27	35	6080				
		3	Y16	6350	3	28	35	6080				
		32	Y10	1500	32	S3	60	440	240			
		16	R8	450	16	S4	35	240				
300x500	1	3	Y20	7250	3	29	35	6940				
	8	10	12	16	20	25	32	40	TOT	Date	2013/08/12	
R	17								17	Det. by	Aalimah	
Y		355	1055	123	195		1146		2874	Ref Dwg		
TOT	17	355	1055	123	195		1146		2891	Job No		
GADOMSKI				HOUSE ASSANDRI						Revision		
CONSULTING ENGINEERS				ROOF LAYOUT						Schedule No		RL/SLAB/01
STUDIO 22 VICTORIA JUNCTION GREENPOINT 8001 TEL. 4217540 FAX. 4217557				220mm RC ROOF SLAB								

4 2Y10-S11-1000 STOOLS

COVER = 30 mm



220mm RC ROOF SLAB

Refer Bending Schedule	RL/SLAB/01	Ref Dwg	
GADOMSKI CONSULTING ENGINEERS STUDIO 22 VICTORIA JUNCTION GREENPOINT 8001 TEL. 4217540 FAX. 4217557	HOUSE ASSANDRI	Revision	
	ROOF LAYOUT	Schedule No	RL/SLAB/01a
220mm RC ROOF SLAB			

MEMBER	No OF	BARS PER MEMB	DIA.	LENGTH	TOTAL NUM- BER	MARK	S C	B E N D I N G						
								A	B	C	D	E/r		
RC BEAM 7	1	2	Y12	7150	2	30	35	6940	240					
		3	Y16	7200	3	31	35	6940						
		32	Y10	1500	32	S3	60	440						
		16	R8	450	16	S4	35	240						
	8	10	12	16	20	25	32	40	TOT	Date	2013/08/12			
R	3								3	Det. by	Aalimah			
Y		30	13	34					76	Ref Dwg				
TOT	3	30	13	34					79	Job No				
GADOMSKI CONSULTING ENGINEERS <small>STUDIO 22 VICTORIA JUNCTION GREENPOINT 8001 TEL. 4217540 FAX. 4217557</small>				HOUSE ASSANDRI ROOF LAYOUT 220mm RC ROOF SLAB						Revision				
										Schedule No		RL/SLAB/02		