



## BASIC ASSESSMENT REPORT FOR THE PROPOSED SHELL SERVICE STATION, SUMMIT ROAD, GAUTENG PROVINCE

GDARD Ref Number: Gaut 002/12-13/E0276

ERM Ref Number: 0189017

### OVERVIEW OF THE PROJECT

Shell SA Marketing (Pty) Ltd (Shell) is proposing to construct and operate a new Service Station on Summit Road in Midrand, Gauteng. The proposed project site for the service station is an undeveloped (vacant) piece of land surrounded by cultivated land and low density residential areas (see locality map on the next page). The service station will consist of four, 46m<sup>3</sup>, Underground Storage Tanks (USTs) with associated infrastructure and further facilities such as a shop, restrooms, parking and access routes.

### PURPOSE OF THIS DOCUMENT

The purpose of this Background Information Document (BID) is to provide Interested and Affected Parties (I&APs) with information about the proposed project and to outline the Environmental Basic Assessment (BA) process to be undertaken. Further this document intends to inform I&APs on how to participate in the BA Process. You are encouraged to register as an I&AP so that you can be kept informed about the project throughout the BA process.

### WHY A BASIC ASSESSMENT?

Prior to the construction of the Summit Road Service Station, a BA process must be undertaken in terms of the National Environmental Management Act, 1998 (Act No. 107 of 1998), as amended (NEMA), in order to obtain the necessary environmental authorisation from the competent authority, the Gauteng Department of Agriculture and Rural Development (GDARD). This process is further outlined on the following

Potential Impacts Associated with Fuel Filling Service Stations	
Construction phase impacts	Operational phase impacts
<ul style="list-style-type: none"> <li>• Increased noise levels due to construction equipment;</li> <li>• Increased dust;</li> <li>• Visual impacts;</li> <li>• Increased traffic levels; and</li> <li>• Employment opportunities.</li> </ul>	<ul style="list-style-type: none"> <li>• Potential soil and groundwater contamination;</li> <li>• Risk of fires and/ or explosions;</li> <li>• Visual impacts;</li> <li>• Increased traffic levels;</li> <li>• Release of volatile organic compounds (VOCs);</li> <li>• Increased levels of convenience.</li> </ul>

### ERM's Role



Environmental Resources Management Southern Africa (Pty) Ltd (ERM) has been appointed by Shell to undertake the Basic Assessment (BA) and associated Public Participation Process.

You are invited to register as an I&AP and comment on this project.

To register please contact ERM or complete the enclosed registration/comment sheet and send to:

Tsietsi P. Monare  
 Tel: 011 798 4300  
 Email: [tsietsi.monare@erm.com](mailto:tsietsi.monare@erm.com)  
 Postal Address:  
 Postnet Suite 624,  
 Private Bag X29,  
 Gallo Manor,





- Legend**
- Shell Summit Road
  - ⚡ NGA Geosites (29 Jan 2013)
  - Buildings/Ruins
  - Contours
  - Rivers
  - Cadastral Farms
  - Transmission Lines
  - National Freeway/Routes
  - Arterial Route
  - Main Roads
  - Secondary Roads
  - Other Roads
  - Track and Hiking Trail
  - Built Up Areas
  - Nature Reserves
  - Open Areas
  - Water Bodies



TITLE:  
**Shell Basic Assessment, Summit Road  
Locality Map**

CLIENT:  
**Shell South Africa**



DATE: FEB 2013  
CHECKED: SG  
PROJECT: 0169017

DRAWN: LDT  
APPROVED: BL  
SCALE: 1 : 30 000

DRAWING:  
**Shell Basic Assessment, Summit Road -  
Locality Map.mxd**

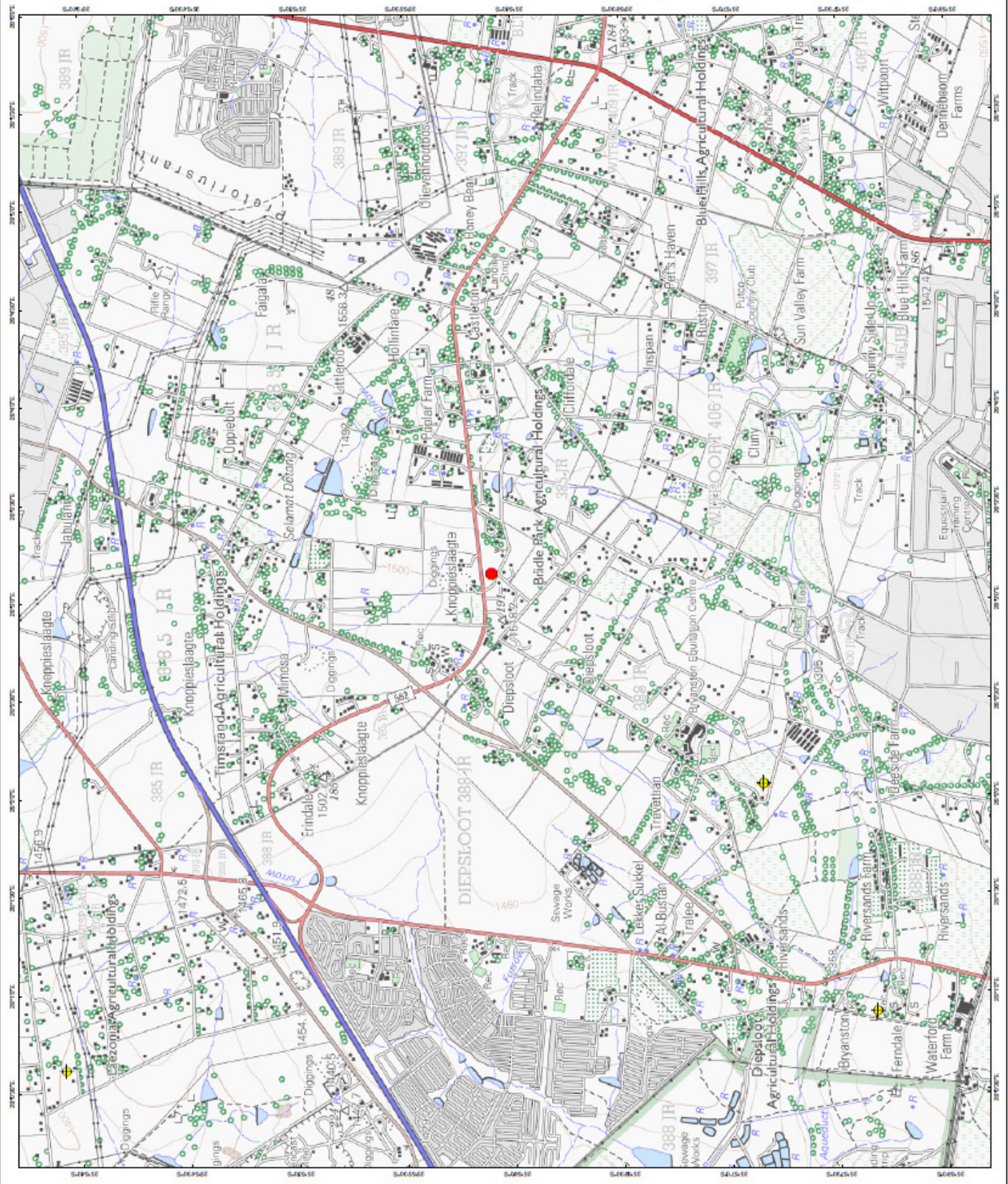
REV: 0



ERM  
ERM Southern Africa  
175 Lunnon Road,  
Hillcrest, Pretoria  
Tel: +27 12 362 0008  
Fax: +27 12 362 8388

Projection: Transverse Mercator, CA 20 Datum, WGS84  
Source: Chief Directorate National Geo-Spatial Information,  
2508-25100, EDI A 250700, EDS, GEOTIE, DWA, NGA Geosites  
1987-1991 (2013 update)

SIZE:  
A3



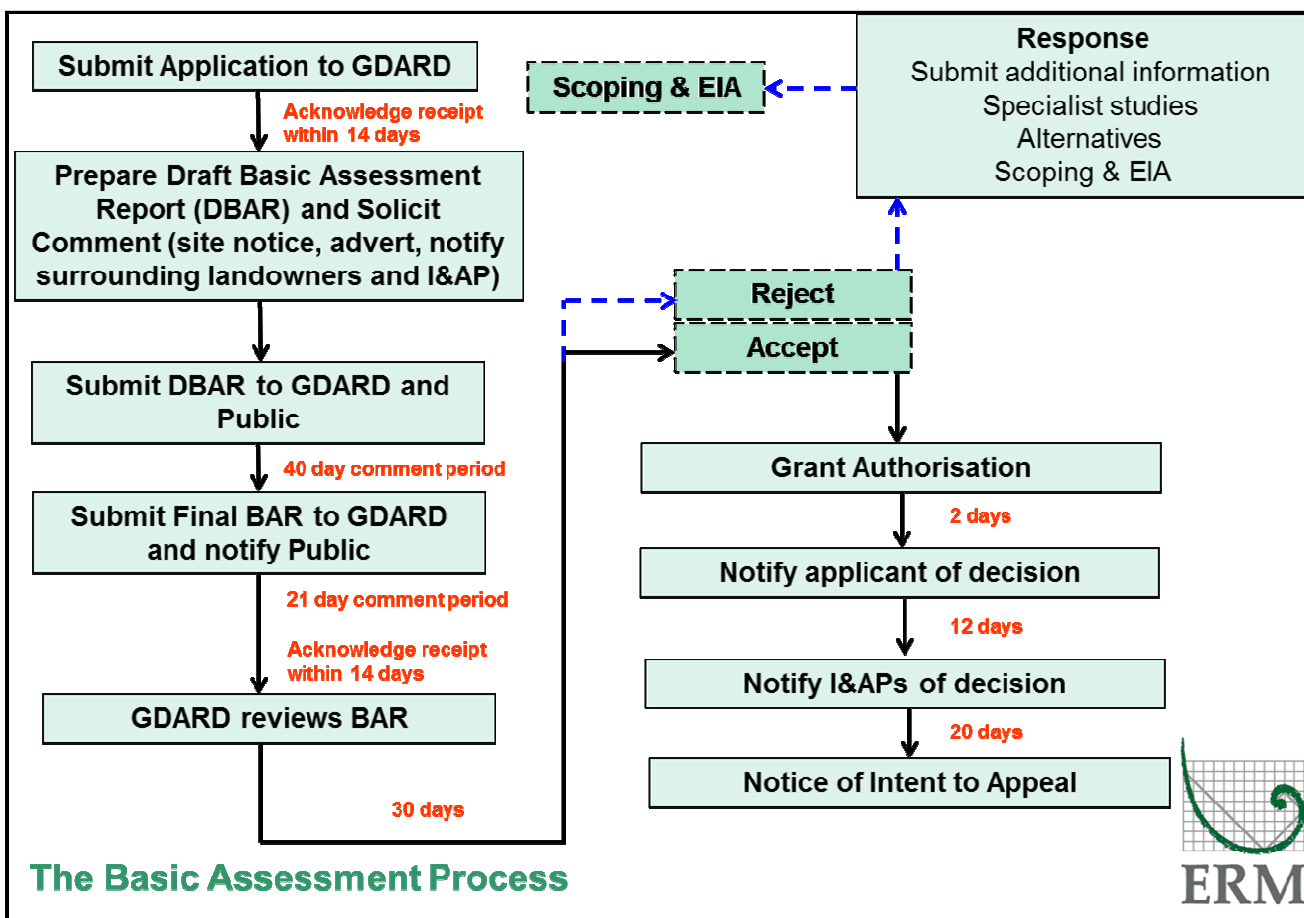


## THE BASIC ASSESSMENT PROCESS

The BA for the proposed service station is being conducted in terms of the NEMA. The construction of the service station's USTs with a combined capacity of 184m<sup>3</sup> has been identified as a listed activity in terms of the EIA Regulations GN R544.

*"The construction of facilities or infrastructure for the storage, or storage and handling of a dangerous goods, where such storage occurs in containers with a combined capacity of 80 cubic metres but not exceeding 500 cubic metres."* Activity 13, GN R544.

Activities listed in GN R544 require Environmental Authorisation through a BA process. The BA process is a simplified Environmental Impact Assessment and involves concise identification and assessment of potential impacts that the proposed project may have on the biophysical and socio-economic environment, supported by input from specialists, where required. The Draft Basic Assessment Report (DBAR) and Environmental Management Plan (EMP) will be made available for your comment.



## HAVE YOUR SAY

As a stakeholder, you are invited to identify issues and raise concerns that you have about the proposed project. There will be opportunities to comment on the project including the 30 day public notification period (11 April 2013—21 May 2013). The project team will provide a response to the questions, and all comments and responses will be included in the Final BAR that will be submitted to the GDARD for their consideration.



