

**APPENDIX C7**  
**COMMENTS RECEIVED**

## ORGANS OF STATE

Eskom SOC Ltd

## Savannah Public Process

---

**From:** John Geeringh  
**Sent:** Monday, January 25, 2021 7:53 AM  
**To:** Savannah Public Process  
**Subject:** RE: DEVELOPMENT OF A CLUSTER OF RENEWABLE ENERGY FACILITIES: Notification of commencement of Basic Assessment and Public Participation Processes  
**Attachments:** Eskom requirements for work in or near Eskom servitudes.doc; Renewable Energy Generation Plant Setbacks to Eskom Infrastructure Rev2 - signed.pdf

Please find attached Eskom general requirements for works at or near Eskom infrastructure and servitudes. Please also find attached the Eskom setbacks guideline the applicant needs to consider during planning of the layouts and positioning of infrastructure.

Kind regards

John Geeringh (Pr Sci Nat)(EAPASA)  
Senior Consultant Environmental Management  
Land and Rights  
Eskom Transmission Division  
Megawatt Park, D1Y42, Maxwell Drive, Sunninghill, Sandton.

---

**From:** Public Process <publicprocess@savannahsa.com>  
**Sent:** Friday, 22 January 2021 15:39  
**To:** John Geeringh  
**Cc:** nicolene@savannahsa.com; ronald@savannahsa.com; Nicolene Venter <nicolene@savannahsa.com>  
**Subject:** DEVELOPMENT OF A CLUSTER OF RENEWABLE ENERGY FACILITIES: Notification of commencement of Basic Assessment and Public Participation Processes

### **DEVELOPMENT OF A CLUSTER OF RENEWABLE ENERGY FACILITIES BETWEEN SOMERSET EAST AND MAKHANDA, EASTERN CAPE PROVINCE**

Dear John,

A cluster of renewable energy facilities is proposed to be developed on various project sites located between Somerset East and Makhandla within the Cookhouse Renewable Energy Development Zone (REDZ), as well as the Eastern Strategic Transmission Corridor. The cluster consists of nine (9) projects which includes six (6) wind farms, two (2) solar energy facilities and one (1) Main Transmission Substation (MTS). A suitable project site for each development has been identified by the project development companies and the entire extent of the projects is located within the Sarah Baartman District Municipality. The western section is located within the Blue Crane Route Local Municipality and the eastern section within the Makana Local Municipality.

Please find attached the Background Information Document which provides additional information

regarding the application for the six (6) wind energy facilities, the two (2) solar energy facilities and the 400MW Main Transmission Substation.

The .KMZs for the development sites and grid connection are not yet available and as soon as these become available, we will forward it to you.

Please accept my apologies for omitting you from the projects' databases at this early stage of the project.

Please do not hesitate to contact us should you require additional information and/or clarification regarding the projects. Our team welcomes your participation and look forward to your involvement throughout this process.

Kind regards,



t: 011 656 3237  
f: 086 684 0547

**Nicolene Venter**  
Public Process

e: [publicprocess@savannahsa.com](mailto:publicprocess@savannahsa.com)  
c: +27 (0) 60 978 8396

[SAWEA Award for Leading Environmental Consultant on Wind Projects in 2013 & 2015](#)

NB: This Email and its contents are subject to the Eskom Holdings SOC Ltd EMAIL LEGAL NOTICE which can be viewed at [http://www.eskom.co.za/Pages/Email\\_Legal\\_Spam\\_Disclaimer.aspx](http://www.eskom.co.za/Pages/Email_Legal_Spam_Disclaimer.aspx)

## TO WHOM IT MAY CONCERN


### Eskom requirements for work in or near Eskom servitudes.

1. Eskom's rights and services must be acknowledged and respected at all times.
2. Eskom shall at all times retain unobstructed access to and egress from its servitudes.
3. Eskom's consent does not relieve the developer from obtaining the necessary statutory, land owner or municipal approvals.
4. Any cost incurred by Eskom as a result of non-compliance to any relevant environmental legislation will be charged to the developer.
5. If Eskom has to incur any expenditure in order to comply with statutory clearances or other regulations as a result of the developer's activities or because of the presence of his equipment or installation within the servitude restriction area, the developer shall pay such costs to Eskom on demand.
6. The use of explosives of any type within 500 metres of Eskom's services shall only occur with Eskom's previous written permission. If such permission is granted the developer must give at least fourteen working days prior notice of the commencement of blasting. This allows time for arrangements to be made for supervision and/or precautionary instructions to be issued in terms of the blasting process. It is advisable to make application separately in this regard.
7. Changes in ground level may not infringe statutory ground to conductor clearances or statutory visibility clearances. After any changes in ground level, the surface shall be rehabilitated and stabilised so as to prevent erosion. The measures taken shall be to Eskom's satisfaction.
8. Eskom shall not be liable for the death of or injury to any person or for the loss of or damage to any property whether as a result of the encroachment or of the use of the servitude area by the developer, his/her agent, contractors, employees, successors in title, and assignees. The developer indemnifies Eskom against loss, claims or damages including claims pertaining to consequential damages by third parties and whether as a result of damage to or interruption of or interference with Eskom's services or apparatus or otherwise. Eskom will not be held responsible for damage to the developer's equipment.
9. No mechanical equipment, including mechanical excavators or high lifting machinery, shall be used in the vicinity of Eskom's apparatus and/or services, without prior written permission having been granted by Eskom. If such permission is granted the developer must give at least seven working days' notice prior to the commencement of work. This allows time for arrangements to be made for supervision and/or precautionary instructions to be issued by the relevant Eskom Manager

Note: Where an electrical outage is required, at least fourteen work days are required to arrange it.

10. Eskom's rights and duties in the servitude shall be accepted as having prior right at all times and shall not be obstructed or interfered with.
11. Under no circumstances shall rubble, earth or other material be dumped within the servitude restriction area. The developer shall maintain the area concerned to Eskom's satisfaction. The developer shall be liable to Eskom for the cost of any remedial action which has to be carried out by Eskom.
12. The clearances between Eskom's live electrical equipment and the proposed construction work shall be observed as stipulated by *Regulation 15 of the Electrical Machinery Regulations of the Occupational Health and Safety Act, 1993 (Act 85 of 1993)*.
13. Equipment shall be regarded electrically live and therefore dangerous at all times.
14. In spite of the restrictions stipulated by Regulation 15 of the Electrical Machinery Regulations of the Occupational Health and Safety Act, 1993 (Act 85 of 1993), as an additional safety precaution, Eskom will not approve the erection of houses, or structures occupied or frequented by human beings, under the power lines or within the servitude restriction area.
15. Eskom may stipulate any additional requirements to highlight any possible exposure to Customers or Public to coming into contact or be exposed to any dangers of Eskom plant.
16. It is required of the developer to familiarise himself with all safety hazards related to Electrical plant.
17. Any third party servitudes encroaching on Eskom servitudes shall be registered against Eskom's title deed at the developer's own cost. If such a servitude is brought into being, its existence should be endorsed on the Eskom servitude deed concerned, while the third party's servitude deed must also include the rights of the affected Eskom servitude.

John Geeringh (Pr Sci Nat)(EAPASA)  
Senior Consultant Environmental Management  
Eskom Transmission Division: Land & Rights  
Megawatt Park, D1Y42, Maxwell Drive, Sunninghill, Sandton.  
P O Box 1091, Johannesburg, 2000.  
Tel: 011 516 7233  
Cell: 083 632 7663  
Fax: 086 661 4064  
E-mail: john.geeringh@eskom.co.za

	<p style="text-align: center;"><b>SCOT</b></p>	<p style="text-align: center;"><b>Technology</b></p>
---	--	--

Title: **Renewable Energy Generation Plant Setbacks to Eskom Infrastructure** Unique Identifier: **240-65559775**

Alternative Reference Number: **N/A**

Area of Applicability: **Power Line Engineering**



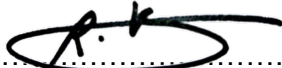
Documentation Type: **Guideline**

Revision: **2**

Total Pages: **9**

Next Review Date: **N/A**

Disclosure Classification: **CONTROLLED DISCLOSURE**

<p><b>Compiled by</b></p> <p></p> <p>.....</p> <p><b>J W Chetty</b> <b>Mechanical Engineer</b></p> <p>Date: 15 / 09 / 2020 .....</p>	<p><b>Approved by</b></p> <p></p> <p>.....</p> <p><b>B Ntshuntsha</b> <b>Chief Engineer (Lines)</b></p> <p>Date: 30/10/2020 .....</p>	<p><b>Authorised by</b></p> <p></p> <p>.....</p> <p><b>R A Vajeth</b> <b>Snr Manager (Lines) and SCOT/SC/ Chairperson</b></p> <p>Date: 30/10/2020 .....</p>
---	--	--



## **CONTENTS**

	<b>Page</b>
<b>EXECUTIVE SUMMARY .....</b>	<b>3</b>
<b>1. INTRODUCTION .....</b>	<b>4</b>
<b>2. SUPPORTING CLAUSES.....</b>	<b>4</b>
2.1 SCOPE .....	4
2.1.1 Purpose .....	5
2.1.2 Applicability.....	5
2.2 NORMATIVE/INFORMATIVE REFERENCES.....	5
2.2.1 Normative .....	5
2.2.2 Informative.....	5
2.3 DEFINITIONS.....	6
2.3.1 Disclosure Classification .....	6
2.4 ABBREVIATIONS.....	6
2.5 ROLES AND RESPONSIBILITIES.....	6
2.6 PROCESS FOR MONITORING .....	6
2.7 RELATED/SUPPORTING DOCUMENTS.....	6
<b>3. DOCUMENT CONTENT.....</b>	<b>6</b>
3.1 INTERNATIONAL SETBACK COMPARISON .....	6
3.2 ESKOM REQUIRED SETBACKS .....	7
<b>4. AUTHORISATION.....</b>	<b>9</b>
<b>5. REVISIONS .....</b>	<b>9</b>
<b>6. DEVELOPMENT TEAM .....</b>	<b>9</b>

## **FIGURES**

Figure 1: Horizontal Axis Wind Turbine.....	8
---	---

### **CONTROLLED DISCLOSURE**

When downloaded from the EDMS, this document is uncontrolled and the responsibility rests with the user to ensure it is in line with the authorised version on the system.

## **EXECUTIVE SUMMARY**

In recent decades, the use of wind turbines, concentrated solar plants and photovoltaic plants have been on the increase as it serves as an abundant source of energy. This document specifies proposed setbacks for wind turbines and the reasons for these setbacks from infrastructure as well as setbacks for concentrated solar plants and photovoltaic plants. Setbacks for wind turbines employed in other countries were compared and a general setback to be used by Eskom was suggested for use with wind turbines and other renewable energy generation plants.

### **CONTROLLED DISCLOSURE**

When downloaded from the EDMS, this document is uncontrolled and the responsibility rests with the user to ensure it is in line with the authorised version on the system.

## **1. INTRODUCTION**

During the last few decades, a large amount of wind turbines have been installed in wind farms to accommodate for the large demand of energy and depleting fossil fuels. Wind is one of the most abundant sources of renewable energy. Wind turbines harness the energy of this renewable resource for integration in electricity networks. The extraction of wind energy is its primary function and thus the aerodynamics of the wind turbine is important. There are many different types of wind turbines which will all exhibit different wind flow characteristics. The most common wind turbine used commercially is the Horizontal Axis Wind Turbine. Wind flow characteristics of this turbine are important to analyse as it may have an effect on surrounding infrastructure.

Wind turbines also cause large turbulence downwind that may affect existing infrastructure. Debris or parts of the turbine blade, in the case of a failure, may be tossed behind the turbine and may lead to damage of infrastructure in the wake path.

This document outlines the minimum distances that need to be introduced between a wind turbine and Eskom infrastructure to ensure that debris and / or turbulence would not negatively impact on the infrastructure and future expansion of infrastructure (lines and substation) as per the long term planning scenario.

Safety distances of wind turbines from other structures as implemented by other countries were also considered and the reasons for their selection were noted. All renewable energy developments are approved by The Department of Environmental Affairs, Forestry and Fisheries (DEFF) in terms of NEMA. The DEFF is aware of the setbacks guideline, however they cannot use it in terms of decision making since the setbacks document has no legal standing in SA and it would be outside of their mandate who have been advised to follow the guidelines herein.

Concentrated solar plants and photovoltaic plants setbacks away from substations were also to be considered to prevent restricting possible power line access routes to the substation and possible expansion of substations.

## **2. SUPPORTING CLAUSES**

### **2.1 SCOPE**

This document provides guidance on the safe distance that a wind turbine should be located from any Eskom power line or substation. Although it is not based on any legislative requirement, it is deemed important that Eskom's infrastructure and future network expansion planning is not impeded. The document specifies proposed setback distances for transmission lines (220 kV to 765 kV), distribution lines

**CONTROLLED DISCLOSURE**

(66 kV to 132 kV) and all Eskom substations. Proposed setbacks for concentrated solar plants and photovoltaic plants are also specified away from substations.

### **2.1.1 Purpose**

Setbacks for wind turbines and power lines / substations are required for various reasons. These include possible catastrophic failure of the turbine blade that may release fragments and which may be thrown onto nearby power lines that may result in damage with associated unplanned outages. Turbulence behind the turbine may affect helicopter flight during routine Eskom live line maintenance and inspections that may lead to safety risk of the aircraft / personnel. Concentrated solar plants and photovoltaic plants setback away from substations were required to prevent substations from being boxed in by these renewable generation plants limiting line route access to the substations and possible future substation expansion.

### **2.1.2 Applicability**

This document is applicable to the siting of all new and existing wind turbines, concentrated solar plants and photovoltaic plants near power lines and substations and in line of site between Eskom telecommunication infrastructure, including future Eskom renewable energy development.

## **2.2 NORMATIVE/INFORMATIVE REFERENCES**

### **2.2.1 Normative**

1. <http://www.envir.ee/orb.aw/class=file/action=preview/id=1170403/Hiiumaa+turbulence+impact+EMD.pdf>.
2. <http://www.energy.ca.gov/2005publications/CEC-500-2005-184/CEC-500-2005-184.PDF>
3. <http://www.adamscountywind.com/Revised%20Site/Windmills/Adams%20County%20Ordinance/Adams%20County%20Wind%20Ord.htm>
4. [http://www.dsireusa.org/incentives/incentive.cfm?Incentive\\_Code=PA11R&RE=1&EE=1](http://www.dsireusa.org/incentives/incentive.cfm?Incentive_Code=PA11R&RE=1&EE=1)
5. <http://www.wind-watch.org/documents/european-setbacks-minimum-distance-between-wind-turbines-and-habitations/>
6. <http://www.publications.parliament.uk/pa/ld201011/ldbills/017/11017.1-i.html>
7. [http://www.caw.ca/assets/pdf/Turbine\\_Safety\\_Report.pdf](http://www.caw.ca/assets/pdf/Turbine_Safety_Report.pdf)
8. Rogers J, Slegers N, Costello M. (2011) A method for defining wind turbine setback standards. Wind energy 10.1002/we.468

### **2.2.2 Informative**

None

## **CONTROLLED DISCLOSURE**

When downloaded from the EDMS, this document is uncontrolled and the responsibility rests with the user to ensure it is in line with the authorised version on the system.

## 2.3 DEFINITIONS

Definition	Description
Setback	The minimum distance between a wind turbine and boundary line/dwelling/road/infrastructure/servitude etc.
Flicker	Effect caused when rotating wind turbine blades periodically cast shadows
Tip Height	The total height of the wind turbine ie. Hub height plus half rotor diameter (see Figure1)

### 2.3.1 Disclosure Classification

**Controlled disclosure:** controlled disclosure to external parties (either enforced by law, or discretionary).

## 2.4 ABBREVIATIONS

Abbreviation	Description
None	

## 2.5 ROLES AND RESPONSIBILITIES

All parties involved in the positioning wind turbines, concentrated solar plants and photovoltaic plants near power lines/substations should endeavour to follow the setbacks outlined in this guideline.

## 2.6 PROCESS FOR MONITORING

Agreement by Eskom in writing on any encroachment of the setbacks distance should be requested via the Grid Access Unit. Eskom should ensure that every application for renewable energy (RE) developments are informed about the existence of the setbacks document early in the RE planning process to ensure maximum effect. This includes Eskom RE development.

## 2.7 RELATED/SUPPORTING DOCUMENTS

None

## 3. DOCUMENT CONTENT

### 3.1 INTERNATIONAL SETBACK COMPARISON

Wind Turbine setbacks employed by various countries were considered. It was found that setbacks were determined for various reasons that include noise, flicker, turbine blade failure and wind effects as well as

**CONTROLLED DISCLOSURE**

future network expansion planning. The distances (setbacks) varied based on these factors and were influenced by the type of infrastructure

Wind turbine setbacks varied for roads, power lines, dwellings, buildings and property and it was noted that the largest setbacks were employed for reasons of noise and flicker related issues [1-7]. Very few countries specified setbacks for power lines.

The literature survey [1-7], yielded information about studies and experiments were conducted to determine the distance that a broken fragment from a wind turbine might be thrown. Even though of low probability of hitting a power line [ $5.0 \times 10^{-5}$  <sup>[8]</sup>], the distances recorded were significant [750m <sup>[8]</sup>]

Wind turbines may also cause changes in wind patterns with turbulent effects behind the hub. These factors influence the wind turbine setbacks specified in this document.

Setbacks were thus introduced to prevent any damage to Eskom infrastructure and impedance to operation and future network expansion planning.

Renewable energy plant can also limit access into substations for power lines of all voltages. A setback distance should therefore be employed to prevent substations from being boxed in by these generation plants and preventing future network expansion. These setback distances are specified in this document.

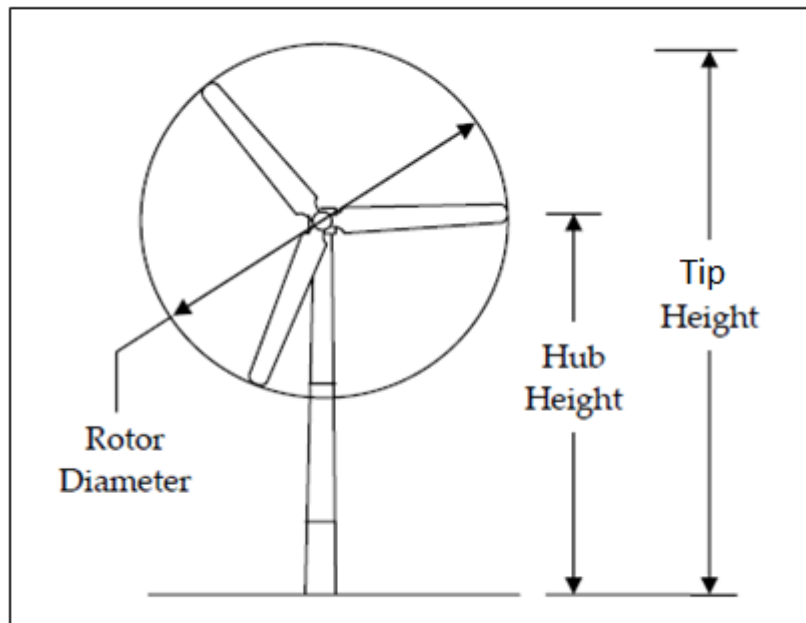
### **3.2 ESKOM RECOMMENDED SETBACKS**

Any renewable energy applicant should engage with Eskom to determine if their plant layout or positioning of turbines, CSP or PV infrastructure would encroach on the proposed setbacks provided for in this guideline and to ensure that their planning and Eskom's future expansion planning is taken into account. Eskom must inform all renewable energy developers, including Eskom RE, of the existence of the setbacks guideline early in the development process. Should there be an encroachment, a formal request should be sent to and accepted by Eskom in writing if any of the below mentioned setback distances are infringed upon:

- Eskom requests a setback distance of 3 times the tip height of the wind turbine from the edge of the closest Eskom servitude (including vacant servitudes) for transmission lines (220kV to 765kV) and Substations.
- Eskom requests a setback distance of 1 times the tip height of the wind turbine from the edge of the closest Eskom servitude (including vacant servitudes) for distribution lines (66 kV to 132 kV) and Substations.

**CONTROLLED DISCLOSURE**

- A written request should be sent to Eskom via the Grid Access Unit regarding any proposed wind turbine, concentrated solar plants and photovoltaic activity within a 5 km radius of a substation for Eskom to comment on.
- Where concentrated solar plants, photovoltaic structures, battery storage systems (BESS) and other renewable generation plants fall within a 2 km radius of the closest point of a transmission or distribution substation (66kV to 765kV), a written agreement with Eskom is recommended during the planning phase of such plant or structures to ensure Eskom's future planning is not impeded.
- Applicants should not position any wind turbine in the line of site between and two Eskom Radio Telecommunication masts. It should be proven that Eskom radio telecommunication systems (mainly microwave systems) will not be affected in any way by wind turbines due to the criticality of this infrastructure in terms of network operation. Eskom Telecommunications should be engaged on this matter.
- If the position or size of any turbine changes and subsequently infringes on any of the above stated setbacks, a request for relaxation must be sent through to Eskom as per the point mentioned above.



**Figure 1: Horizontal Axis Wind Turbine [2]**

**CONTROLLED DISCLOSURE**

#### **4. AUTHORISATION**

This document has been seen and accepted by:

<b>Name &amp; Surname</b>	<b>Designation</b>
V Naidoo	Chief Engineer
Dr P Pretorius	Electrical Specialist
J Geeringh	Snr Consultant Environ Mngt
B Haridass	Snr Consultant Engineer
B Ntshunsha	Chief Engineer
R Vajeth	Snr Manager (Lines)
D A Tunncliff	Snr Manager L&R (Acting)
B Branfield	Snr Consultant Engineer

#### **5. REVISIONS**

<b>Date</b>	<b>Rev.</b>	<b>Compiler</b>	<b>Remarks</b>
November 2013	0	J W Chetty	First Publication - No renewable energy generation plant setback specification in existence.
October 2018	1	JW Chetty	Modification to sub-section 3.2 to provide more clarity for application procedure.
June 2020	2	JW Chetty	Content within the guideline was re-worded to explain the benefits of mutual agreements between the applicants and ESKOM rather than the application being a legal obligation.

#### **6. DEVELOPMENT TEAM**

The following people were involved in the development of this document:

Jonathan Chetty (Mechanical Engineer)

Vivendhra Naidoo (Chief Engineer)

Dr Pieter Pretorius (Electrical Specialist)

John Geeringh (Snr Consultant Environ Mngt)

Bharat Haridass (Snr Consultant Engineer)

Riaz Vajeth (Snr Manager (Lines))

Bruce Ntshunsha (Chief Engineer)

David Tunncliff (Snr Manager L&R Acting)

**CONTROLLED DISCLOSURE**



SANRAL



Please consider the environment before printing.

---

**Disclaimer**

This message contains confidential information and is intended only for the individual named. If you are not the named addressee you should not disseminate, distribute or copy this e-mail. Please notify the sender immediately by e-mail if you have received this e-mail by mistake and delete this e-mail from your system. E-mail transmission cannot be guaranteed to be secure or without errors as information could be intercepted, corrupted, lost, destroyed, arrive late or incomplete, or contain viruses. The sender therefore does not accept liability for any errors or omissions in the contents of this message, which arise as a result of e-mail transmission. If verification is required please request a hard-copy version. The South African National Roads Agency SOC Ltd, PO Box 415, Pretoria, 0001, South Africa, Tel +27-(0)12 844 8000, [www.nra.co.za](http://www.nra.co.za). This Disclaimer is deemed to form part of the content of this email in terms of Section 11 of the Electronic Communications and Transactions Act, 25 of 2002.

---

---

**From:** Mpati Makoa (HO)  
**Sent:** 18 November 2020 08:09 AM  
**To:** Chumisa Njingana (SR)  
**Cc:** Nenekazi Songxaba (SR)  
**Subject:** FW: DEVELOPMENT OF A CLUSTER OF RENEWABLE ENERGY FACILITIES: Notification of commencement of Basic Assessment and Public Participation Processes

Good morning ladies

Please see attached for your information and attention.

Kind regards  
Mpati

---

**From:** Public Process <[publicprocess@savannahsa.com](mailto:publicprocess@savannahsa.com)>  
**Sent:** Tuesday, November 17, 2020 5:03 PM  
**To:** Mpati Makoa (HO)  
**Subject:** DEVELOPMENT OF A CLUSTER OF RENEWABLE ENERGY FACILITIES: Notification of commencement of Basic Assessment and Public Participation Processes

## **DEVELOPMENT OF A CLUSTER OF RENEWABLE ENERGY FACILITIES BETWEEN SOMERSET EAST AND MAKHANDA, EASTERN CAPE PROVINCE**

Dear Interested and Affected Parties,

A cluster of renewable energy facilities is proposed to be developed on various project sites located between Somerset East and Makhanda within the Cookhouse Renewable Energy Development Zone (REDZ), as well as the Eastern Strategic Transmission Corridor. The cluster consists of nine (9) projects which includes six (6) wind farms, two (2) solar energy facilities and one (1) Main Transmission Substation (MTS). A suitable project site for each development has been identified by the project development companies and the entire

extent of the projects is located within the Sarah Baartman District Municipality. The western section is located within the Blue Crane Route Local Municipality and the eastern section within the Makana Local Municipality.

Please find attached the Background Information Document which provides additional information regarding the application for the six (6) wind energy facilities, the two (2) solar energy facilities and the 400MW Main Transmission Substation.

We kindly request you to complete the attached stakeholder registration and comment form to formally register on the project databases and indicate in which of the nine (9) projects (or all) your interest lies.

Please do not hesitate to contact us should you require additional information and/or clarification regarding the projects. Our team welcomes your participation and look forward to your involvement throughout this process.

Kind regards,

[Unsubscribe this type of email](#)



t: 011 656 3237  
f: 086 684 0547

**Nicolene Venter**  
Public Process

e: [publicprocess@savannahsa.com](mailto:publicprocess@savannahsa.com)  
c: +27 (0) 60 978 8396

SAWEA Award for Leading Environmental Consultant on Wind Projects in 2013 & 2015

## INTERESTED AND AFFECTED PARTIES

## Savannah Public Process

---

**From:** Savannah Public Process  
**Sent:** Tuesday, February 23, 2021 1:59 PM  
**To:**  
**Subject:** RE: public participation notice.

Dear Sir,

This e-mail serves to confirm our telephone discussion a few minutes ago in which I requested your name and surname to register you on the projects' databases and to inform you of the availability of the Basic Assessment Reports.

You informed us that there is no need to obtain your information and that the matter can be considered attended to.

Kind regards,



t: +27 (0)11 656 3237  
f: +27 (0) 86 684 0547

Nicolene Venter  
**Public Process**

e: [Publicprocess@savannahsa.com](mailto:Publicprocess@savannahsa.com)  
c: +27 (0)60 978 8396

SAWEA Award for Leading Environmental Consultant on Wind Projects in 2013 & 2015

---

**From**  
**Sent:** Thursday, November 12, 2020 11:29 AM  
**To:** Savannah Public Process <publicprocess@savannahsa.com>  
**Subject:** public participation notice.

I suggest that your half page advert in The Herald today is possibly not legal. The headline refers to an area between Somerset East and a town that I believe no longer exists. Perhaps you should consult your lawyers on the matter to ascertain the correctness of the issue.

Sent from my Galaxy

## Savannah Public Process

---

**From:** Savannah Public Process  
**Sent:** Wednesday, November 18, 2020 1:13 PM  
**To:** stevonh@easpe.co.za  
**Cc:** Ronald Baloyi  
**Subject:** RE: Registration as an IAP for Development of a Cluster of Renewable Energies Between Somerset East and Makhandha, Eastern Cape  
**Attachments:** EASPE-HOBSON Stevon (2020.11.18).pdf; SE2602-WindRelic RegCommForm-FINAL.pdf

Tracking:	Recipient	Delivery
	stevonh@easpe.co.za	
	Ronald Baloyi	Delivered: 11/18/2020 1:13 PM

Dear Stevon,

Please receive herewith confirmation that you are registered as an interested and affected party on the above-projects databases as requested.

Would you please be so kind and complete the attached registration form by indicating in which project (or all projects) you would like to register for.

Kind regards,

---

**From:** Stevonh@easpe.co.za <stevonh@easpe.co.za>  
**Sent:** Wednesday, November 18, 2020 8:44 AM  
**To:** Savannah Public Process <publicprocess@savannahsa.com>  
**Subject:** Registration as an IAP for Development of a Cluster of Renewable Energies Between Somerset East and Makhandha, Eastern Cape

Good Morning Nicolene

I trust this finds you well.

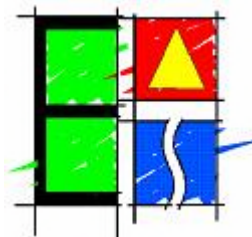
I would like to register as an Interested and Affected Party for the Development of a Cluster of Renewable Energies Between Somerset East and Makhandha, Eastern Cape Project.

As an Eastern Cape resident I have a keen interest in the development of the province and these projects could bring much needed development and jobs to the region.

Regards,

**Stevon Hobson**  
**Engineering Advice & Services (Pty) Ltd**

Tel : 041 581 2421  
Cell : 072 447 8257  
Fax : 086 683 9899  
Web : [www.easpe.co.za](http://www.easpe.co.za)



The information transmitted hereby is confidential and may be legally privileged. If not the intended recipient, you may not read, use or disseminate that information. Engineering Advice and Services does not accept liability for any personal views expressed in this message.

## Savannah Public Process

---

**From:** Savannah Public Process  
**Sent:** Wednesday, November 18, 2020 1:06 PM  
**To:**  
**Cc:** Tsheko Ratsheko; Ronald Baloyi  
**Subject:** Interest in renewable energy projects: Confirmation of Registration  
**Attachments:** ARMINCO-BRITCHFORD Grahame (2020.11.18).pdf; SE2602-WindRelic RegCommForm-FINAL.pdf

<b>Tracking:</b>	<b>Recipient</b>	<b>Delivery</b>
	Tsheko Ratsheko	
	Ronald Baloyi	Delivered: 11/18/2020 1:06 PM

Dear Grahame,

Please receive herewith confirmation that you are registered as an interested and affected party on the above-projects databases as requested.

Would you please be so kind and complete the attached registration form by indicating in which project (or all projects) you would like to register for.

Kind regards,

---

**From:** grahame@armincopiping.com  
**Sent:** Wednesday, November 18, 2020 9:31 AM  
**To:** Savannah Public Process <publicprocess@savannahsa.com>  
**Cc:** Tsheko Ratsheko  
**Subject:** Interest in renewable energy projects

Good day

I would like to register on this platform in order to participate in public commentary and to gain more information on renewable energy projects.

My company is a specialist piping fabricator and constructor and we, as a team, would like to engage in more renewable energy projects as opportunities present themselves. Our interests lie in wind, Solar and gas to power projects.

Many thanks

Warmest Regards

Grahame Britchford

 **arminco**  
ARMINCO PIPING PROJECTS  
Project Managers; Fabricators and Constructors  
A Level 2 B-BBEE Contributor



## Savannah Public Process

---

**From:** Savannah Public Process  
**Sent:** Thursday, November 26, 2020 3:33 AM  
**To:** Taylor Shaun  
**Cc:** Nicolene Venter; Ronald Baloyi; savannahenvironmentalsa@gmail.com; Nicolene Venter  
**Subject:** RE: DEVELOPMENT OF A CLUSTER OF RENEWABLE ENERGY FACILITIES: Notification of commencement of Basic Assessment and Public Participation Processes  
**Attachments:** SE2602 Wind Relic BID (Eng).pdf; SE2602-WindRelic RegCommForm-FINAL.pdf

<b>Tracking:</b>	<b>Recipient</b>	<b>Delivery</b>
	Taylor Shaun	
	Nicolene Venter	Delivered: 11/26/2020 3:33 AM
	Ronald Baloyi	Delivered: 11/26/2020 3:33 AM
	savannahenvironmentalsa@gmail.com	
	Nicolene Venter	

Dear Shaun,

The applicants are:

Project Name	Hamlett Wind Farm	Ripponn Wind Farm	Redding Wind Farm	Aeolus Wind Farm	Wind Garden Wind Farm	Fronteer Wind Farm	REDZ 3 Power Corridor 400MTS	Solaris Fields Solar Energy Facility	Sun Garden Solar Energy Facility
Applicant	Hamlett (Pty) Ltd	Ripponn (Pty) Ltd	Redding Wind (Pty) Ltd	Aeolus (Pty) Ltd	Wind Garden (Pty) Ltd	Fronteer (Pty) Ltd	Wind Relic (Pty) Ltd	Solaris Fields (Pty) Ltd	Sun Garden (Pty) Ltd

Please find attached the Background Information Document which will provide enel with additional information regarding the proposed developments.

It will be appreciated if you can please complete the attached registration form by indicating in which (or all) of the projects your interest lies.

Kind regards,

---

**From:** Taylor Shaur  
**Sent:** Saturday, November 21, 2020 1:52 PM  
**To:** Savannah Public Process <publicprocess@savannahsa.com>  
**Cc:** Nicolene Venter <nicolene@savannahsa.com>; Ronald Baloyi <Ronald@savannahsa.com>; savannahenvironmentalsa@gmail.com; Nicolene Venter <nicolene@savannahsa.com>  
**Subject:** RE: DEVELOPMENT OF A CLUSTER OF RENEWABLE ENERGY FACILITIES: Notification of commencement of Basic Assessment and Public Participation Processes

Thank you Nicolene

Could you please provide details about who the applicant is?

Regards

Shaun Taylor  
Pr. Nat. Sci (Reg No: 118409)  
Environment, Archaeology & Biodiversity  
South Africa



102 Rivonia Road, Sandton  
2196, Johannesburg

---

**From:** Public Process [<mailto:publicprocess@savannahsa.com>]

**Sent:** Wednesday, 18 November 2020 01:50

**To:** Taylor Shaun Taylor Shaun

**Cc:** [nicolene@savannahsa.com](mailto:nicolene@savannahsa.com); [ronald@savannahsa.com](mailto:ronald@savannahsa.com); [savannahenvironmentalsa@gmail.com](mailto:savannahenvironmentalsa@gmail.com); Nicolene Venter <[nicolene@savannahsa.com](mailto:nicolene@savannahsa.com)>

**Subject:** DEVELOPMENT OF A CLUSTER OF RENEWABLE ENERGY FACILITIES: Notification of commencement of Basic Assessment and Public Participation Processes

**DEVELOPMENT OF A CLUSTER OF RENEWABLE ENERGY FACILITIES BETWEEN SOMERSET EAST AND MAKHANDA,  
EASTERN CAPE PROVINCE**

Dear Shaun,

A cluster of renewable energy facilities is proposed to be developed on various project sites located between Somerset East and Makhanda within the Cookhouse Renewable Energy Development Zone (REDZ), as well as the Eastern Strategic Transmission Corridor. The cluster consists of nine (9) projects which includes six (6) wind farms, two (2) solar energy facilities and one (1) Main Transmission Substation (MTS). A suitable project site for each development has been identified by the project development companies and the entire extent of the projects is located within the Sarah Baartman District Municipality. The western section is located within the Blue Crane Route Local Municipality and the eastern section within the Makana Local Municipality.

As per your telephone request to our colleague, Gideon Raath, yesterday afternoon to be registered on the above-mentioned projects, please find attached the Background Information Document which provides additional information regarding the application for the six (6) wind energy facilities, the two (2) solar energy facilities and the 400MW Main Transmission Substation.

We kindly request you to complete the attached stakeholder registration and comment form to formally register on the project databases and indicate in which of the nine (9) projects (or all) your interest lies.

Please do not hesitate to contact us should you require additional information and/or clarification regarding the projects. Our team welcomes your participation and look forward to your involvement throughout this process.

Kind regards,



t: 011 656 3237  
f: 086 684 0547

**Nicolene Venter**  
Public Process

e: [publicprocess@savannahsa.com](mailto:publicprocess@savannahsa.com)  
c: +27 (0) 60 978 8396

SAWEA Award for Leading Environmental Consultant on Wind Projects in 2013 & 2015

## Savannah Public Process

---

**From:** Savannah Public Process  
**Sent:** Tuesday, December 1, 2020 4:10 AM  
**To:** Sam Ralston  
**Cc:** Nicolene Venter; Ronald Baloyi  
**Subject:** DEVELOPMENT OF A CLUSTER OF RENEWABLE ENERGY FACILITIES: Confirmation of Registration  
**Attachments:** SE2602 Wind Relic, Solar & Grid Notification I&APs-FINAL.pdf; SE2602 Wind Relic BID (Eng).pdf; SE2602-WindRelic RegCommForm-FINAL.pdf

<b>Tracking:</b>	<b>Recipient</b>	<b>Delivery</b>
	Sam Ralston	
	Nicolene Venter	Delivered: 12/1/2020 4:10 AM
	Ronald Baloyi	Delivered: 12/1/2020 4:10 AM

Dear Samantha,

All well here in Gauteng!

Yes, I can confirm that BirdLife SA is an I&AP on the cluster of project's database.

However, I notice that our BID and notification of commencement of the Basic Assessment processes was not sent as part of the 'campaign' sent on the 17<sup>th</sup> of November 2020.

Attached for BirdLife's attention and information is the BID, including the registration and comment form although we always register BirdLife as a key stakeholder on renewable energy projects.

Samantha, thank you for checking on BirdLife's inclusion on the projects' databases.

The enquiry regarding the Cape Vulture Guidelines Guidelines is forwarded to the EAP for confirmation.

Kind regards,

---

**From:** Sam Ralston  
**Sent:** Monday, November 30, 2020 2:20 PM  
**To:** Savannah Public Process <publicprocess@savannahsa.com>  
**Subject:** Re: DEVELOPMENT OF A CLUSTER OF RENEWABLE ENERGY FACILITIES: Notification of commencement of Basic Assessment and Public Participation Processes

Dear Nicole

I hope you are well? I presume that BirdLife South Africa is a I&AP for these projects and that our Cape Vulture Guidelines are being applied, but just double-checking?

Thanks  
Sam

Samantha Ralston-Paton  
Birds and Renewable Energy Project Manager

<http://www.birdlife.org.za>



BirdLife South Africa's Birds and Renewable Energy Project is sponsored by Investec Corporate and Institutional Banking

Sponsored by



**LIMITATION OF LIABILITY**

Any information present or attached must be regarded as the communication of information and does not under any circumstance constitute formal advice unless otherwise stated to the contrary. This information has been prepared solely for the use of the addressee. It is not intended for use by any other party and may not be relied upon by any other party. No acceptance of any liability for any unauthorised use of this information or any associated attachment will be given. Further, this information is based on the facts provided by the addressee and on the law as promulgated at the date of this document. No responsibility will be taken for advising on any changes to the information which may arise as a result of subsequent changes to law or practice.

---

**From:** Public Process [<mailto:publicprocess@savannahsa.com>]

**Sent:** 17 November 2020 05:05 PM

**To:** Andre Van der Spuy

**Subject:** DEVELOPMENT OF A CLUSTER OF RENEWABLE ENERGY FACILITIES: Notification of commencement of Basic Assessment and Public Participation Processes

**DEVELOPMENT OF A CLUSTER OF RENEWABLE ENERGY FACILITIES  
BETWEEN SOMERSET EAST AND MAKHANDA, EASTERN CAPE PROVINCE**

Dear Interested and Affected Parties,

A cluster of renewable energy facilities is proposed to be developed on various project sites located between Somerset East and Makhanda within the Cookhouse Renewable Energy Development Zone (REDZ), as well as the Eastern Strategic Transmission Corridor. The cluster consists of nine (9) projects which includes six (6) wind farms, two (2) solar energy facilities and one (1) Main Transmission Substation (MTS). A suitable project site for each development has been identified by the project development companies and the entire extent of the projects is located within the SarahBaartman District Municipality. The western section is located within the Blue Crane Route Local Municipality and the eastern section within the Makana Local Municipality.

Please find attached the Background Information Document which provides additional information regarding the application for the six (6) wind energy facilities, the two (2) solar energy facilities and the 400MW Main Transmission Substation.

We kindly request you to complete the attached stakeholder registration and comment form to formally register on the project databases and indicate in which of the nine (9) projects (or all) your interest lies.

Please do not hesitate to contact us should you require additional information and/or clarification regarding the projects. Our team welcomes your participation and look forward to your involvement throughout this process.

Kind regards,

[Unsubscribe this type of email](#)

<image001.jpg>

t: 011 656 3237  
f: 086 684 0547

**Nicolene Venter**

Public Process

<0.gif>

e: [publicprocess@savannahsa.com](mailto:publicprocess@savannahsa.com)  
c: +27 (0) 60 978 8396

---

SAWEA Award for Leading Environmental Consultant on Wind Projects in 2013 & 2015



Virus-free. [www.avast.com](http://www.avast.com)

<SE2602\_Wind\_Reloc\_BID\_(Afr).Final.pdf><SE2602-WindReloc\_RegCommForm-FINAL.pdf><SE2602\_Wind\_Reloc\_BID\_(Eng)\_Final.pdf><SE2602\_Wind\_Reloc,\_Solar\_&\_Grid\_Notification\_I&APs-FINAL.pdf>

2 December 2020

Me Nicolene Venter  
Savannah International  
[publicprocess@savannahsa.com](mailto:publicprocess@savannahsa.com)

Dear Me Venter

**Basic Assessment Process  
Development of a cluster of renewable energy facilities between Somerset East and  
Makhanda  
November 2020**

We have received information (two documents) from a farmer about the envisaged projects referred to above.

Alien invader cacti, predominantly the spiny *Opuntia ficus-indica* and *O. engelmannii* have infested to various degrees the Eastern Cape Province.

Our Company, *Spiny Cactus Pear Processing (Pty) Ltd* has been involved in preparing the construction sites for the erection of a wind turbine project near Bedford. We were specifically engaged to clear the invader alien spiny cacti from the access roads and platforms stands for the contractors to erect the wind turbine towers and auxiliary facilities.

Considerable competency and expertise have been developed in harvesting and processing alien spiny invader plants as livestock feed.

Attached please find a document providing some background in this regard.

We assume our expertise will be required to implement the envisaged projects.

Please advise how and with whom we can engage to participate.

Yours sincerely



Name: HO de Waal  
Director: Spiny Cactus Pear Processing (Pty) Ltd



## Savannah Public Process

---

**From:** Savannah Public Process  
**Sent:** Thursday, December 17, 2020 11:18 AM  
**To:** Gwen Theron  
**Cc:** Michael van Staden; Ronald Baloyi  
**Subject:** Proposed Wind Farm Developments in the Eastern Cape:  
**Attachments:** LEAP Environment-THERON Dr Gwen (2020.12.15).pdf; SE2602-WindRelic RegCommForm-FINAL.pdf; VAN STADEN Michael (2020.12.15).pdf; WRSA-YORK Richard (2020.12.15).pdf; KWANDWE-SHOLTO-DOUGLAS Angus.pdf; HEYNEKE G (2020.12.15).pdf; TALIS HOLDINGS-MOGASHOA Tebogo (2020.12.15).pdf; ENGELBRECHT Colin (2020.12.15).pdf; JURGENS Thinus (2020.12.15).pdf

<b>Tracking:</b>	<b>Recipient</b>	<b>Delivery</b>
	Gwen Theron	
	Michael van Staden	
	Ronald Baloyi	Delivered: 12/17/2020 11:18 AM

Dear Dr Theron,

Thank you for your e-mail below requesting registration of yourself and other stakeholders on the proposed project's database.

Attached for your perusal is the proof of the registrations (yourself and the other I&APs listed in your e-mail below). Please note that Mr Angus Sholto-Douglas is already a registered I&AP.

To register on the project's database we need a name and surname please – would you kindly provide the information as this e-mail address has not yet been captured on the project's database.

At this stage it is envisaged that the BARs will be made available for review and comment in the new year. As registered I&APs, all will be notified of the availability of the BARs for your review and comments.

Dr Theron, it is required that yourself and those I&APs that have been registered as per your e-mail below, complete the attached registration and comment form to ensure that the relevant parties are registered to the applicable projects.

Please do not hesitate to contact us should you require any additional information at this stage.

Kind regards,

---

**From:** Gwen Theron  
**Sent:** Tuesday, December 15, 2020 9:32 AM  
**To:** Savannah Public Process <publicprocess@savannahsa.com>  
**Cc:** Michael van Staden  
**Subject:** FW: Proposed Wind Farm Developments in the Eastern Cape

Dear Nicolene,

Please register me and the persons listed below as interested and Affected parties for this application.



1. Michael van Staden  
VAN STADEN & BOOYSEN INC.

4 IBIS PLACE, MEYERSDAL EXT 21.

Our website: [www.vsbattorneys.co.za](http://www.vsbattorneys.co.za)

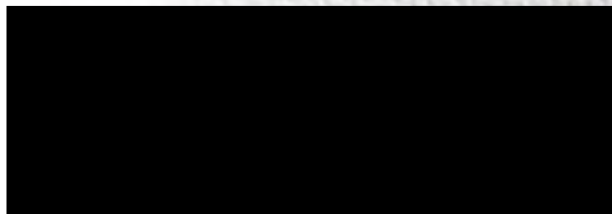
2. Richard York

The President-WRSA-Mr Gerhard Heynecke  
Deputy President-WRSA-Mr Colin Engelbrecht  
Director-High Level Affairs-Mr Tebogo Mogashoa  
CEO-WRSA-Mr Richard York  
EC Provincial Chair-Mr Thinus Jurgens

**Richard York - Chief Executive Officer**



*"Governed by nature,  
driven by passion,  
focussed on results"*



3. **ANGUS SHOLTO-DOUGLAS**  
MANAGING DIRECTOR

Web: [www.kwandwe.com](http://www.kwandwe.com)

**KWANDWE**

Heatherton Towers, Kwandwe Private Game Reserve, Fort Brown District, Eastern Cape, 6140, South Africa

Also

Tebogo Mogashoa'

Colin Engelbrecht'

Thinus Jurgens'

Please acknowledge the request

I will also appreciate it if you can give me a schedule or time frame for the submission of comments to the process.  
Much appreciated.

Dr. Gwen Theron



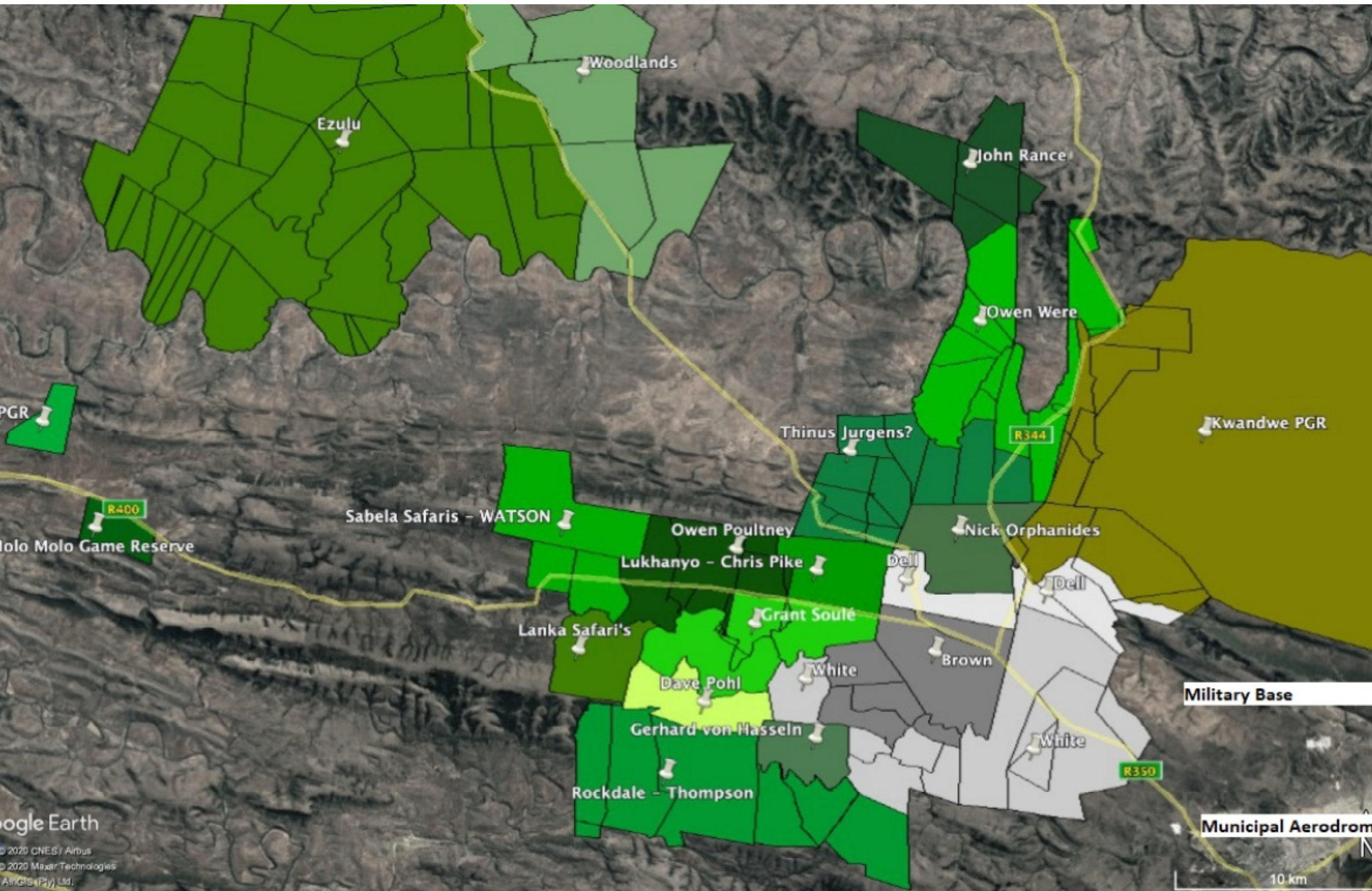
**LEAP**

Dr. Gwen Theron • PrLArch No 97082

Landscape Architect • Environmental Planner

Imbrilinx cc 2010/089810/23





## Savannah Public Process

---

**From:** Savannah Public Process  
**Sent:** Wednesday, February 24, 2021 8:25 AM  
**To:** Chad Comley  
**Subject:** Eastern Cape Development of a Cluster of Renewable Energy Facilities

Hi Chad,

In response to your e-mails dated 16 & 17 February 2021, please be informed that queries / requests relating to company information and/or matters do not fall within the ambit of the Basic Assessment processes being undertaken for the Eastern Cape Renewable Energy Facility Clusters.

The information requested can be obtained from the Companies and Intellectual Property Commission (CIPC).

Please do not hesitate to submit any further comments that you may have relating to the environmental studies being undertaken for these proposed developments.

Kind regards,



t: +27 (0)11 656 3237  
f: +27 (0) 86 684 0547

**Nicolene Venter**

Public Participation & Social  
Consultant

e: [nicolene@savannahsa.com](mailto:nicolene@savannahsa.com)  
c: +27 (0) 83 377 9112

SAWEA Award for Leading Environmental Consultant on Wind Projects in 2013 & 2015

---

**From:** Savannah Public Process  
**Sent:** Thursday, February 18, 2021 7:23 AM  
**To:** Chad Comley  
**Subject:** RE: Se2602 development of a cluster of renewable energy facilities

Hi Chad,

Please receive herewith acknowledgement of your e-mail below.

Your request for information has been forwarded to the project team for a response.

Kind regards,



t: +27 (0)11 656 3237  
f: +27 (0) 86 684 0547

**Nicolene Venter**  
**Public Process**

e: [Publicprocess@savannahsa.com](mailto:Publicprocess@savannahsa.com)  
c: +27 (0)60 978 8396

SAWEA Award for Leading Environmental Consultant on Wind Projects in 2013 & 2015

---

**From:** Chad Comley  
**Sent:** Wednesday, February 17, 2021 12:21 PM  
**To:** Savannah Public Process <[publicprocess@savannahsa.com](mailto:publicprocess@savannahsa.com)>  
**Subject:** Se2602 development of a cluster of renewable energy facilities

Hi Nicolene

This is to confirm Wind Relic and Dimsum partnership  
From yesterday question

Pls could you also supply me with answer to the following questions

1) who is the project manager of the clusters of renewable energy facilities

2) who are the directors of wind relic and all the applicants company's

3) could you pls provide me with the shareholders certificates in wind relic  
And all the other applicant companies

It would be appreciated if you could get back to me with a response as soon as possible  
Maybe by the end of the week

Could you also acknowledge receipt of mail  
And yesterdays mail

Kind regards  
Chad Comley



WIND RELIC is Dimsum Energy's privately-owned partner in the current development of two significant wind projects in the Eastern Cape – the first, just South of Somerset East and the second, just West of Grahamstown. Once completed, these two utilities will combine to

## Savannah Public Process

---

**From:** Savannah Public Process  
**Sent:** Tuesday, March 2, 2021 1:18 PM  
**To:** Estelle Pillay  
**Subject:** RE: Development of a cluster of renewable energy facility between Somerset East and Grahamstown, Eastern Cape.

Dear Estelle,

Thank you for your e-mail below.

Please be informed that Savannah Environmental is the appointed Environmental Assessment Practitioner undertaking the various environmental studies for the Basic Assessment process and are not associated with or responsible for the Town Planning application referred to in your e-mail below. Also, we are not part of the procurement / construction phase of these projects.

Herewith the response to your enquiries below:

- EIA Consultant: Savannah Environmental
- Town Planners: Not part of our scope of work
- Client: Information for all the project are included in the Background Information Document (available on our website)
- Private Developer: Yes

You are most welcome to access the Background Information Document and any other project related information from our website at: <https://savannahsa.com/public-documents/energy-generation/eastern-cape-cluster-of-renewable-energy-facilities/>.

Please be informed that you are registered on the projects' databases and will receive all future environmental authorization process notifications regarding these applications.

Kind regards,



t: +27 (0)11 656 3237  
f: +27 (0) 86 684 0547

Nicolene Venter  
**Public Process**

e: [Publicprocess@savannahsa.com](mailto:Publicprocess@savannahsa.com)  
c: +27 (0)60 978 8396

SAWEA Award for Leading Environmental Consultant on Wind Projects in 2013 & 2015

---

**From:** Estelle Pillay <EstelleP@l2b.co.za>  
**Sent:** Monday, February 22, 2021 11:09 AM  
**To:** Savannah Public Process <publicprocess@savannahsa.com>  
**Subject:** Re: Development of a cluster of renewable energy facility between Somerset East and Grahamstown, Eastern Cape.

Good Day Nicolene,

I hope you are well. I wonder if you could please assist me with a development. I came across in a Town

Planning Notice for the development of a cluster of renewable energy facility between Somerset East and Grahamstown, Eastern Cape.

I do not have any objections, I am an interested party and I wanted to know if you would please provide me with the details of the client or any professionals involved.

I am interested in following the progress of the various stages of this development from the town planning stages, through design and construction. I follow all the building and construction projects in South Africa and Africa right from the conceptual stages up until construction is complete.

EIA Consultant: ?  
Town Planners: ?  
Client: ?  
Private Developer: ?

Please can you provide me with the copy of the Background Information Document for this development?

Any information would be greatly appreciated. Looking forward to your response.

--

Kind regards,



Our Business is about growing Yours. Find out Who is building What, When & Where.

## Estelle Pillay | Regional Content Researcher Projects

T : +27 86 083 6337 | F: +27 33 343 5882 | E: [EstelleP@L2B.co.za](mailto:EstelleP@L2B.co.za) | W: [www.L2B.co.za](http://www.L2B.co.za)



**L2B: Comprehensive, Online Business Leads for the Construction Industry.**

---

This e-mail is for the intended addressee only. If you have received it in error, please notify the sender by e-mail. View our Privacy Policy [here](#).