

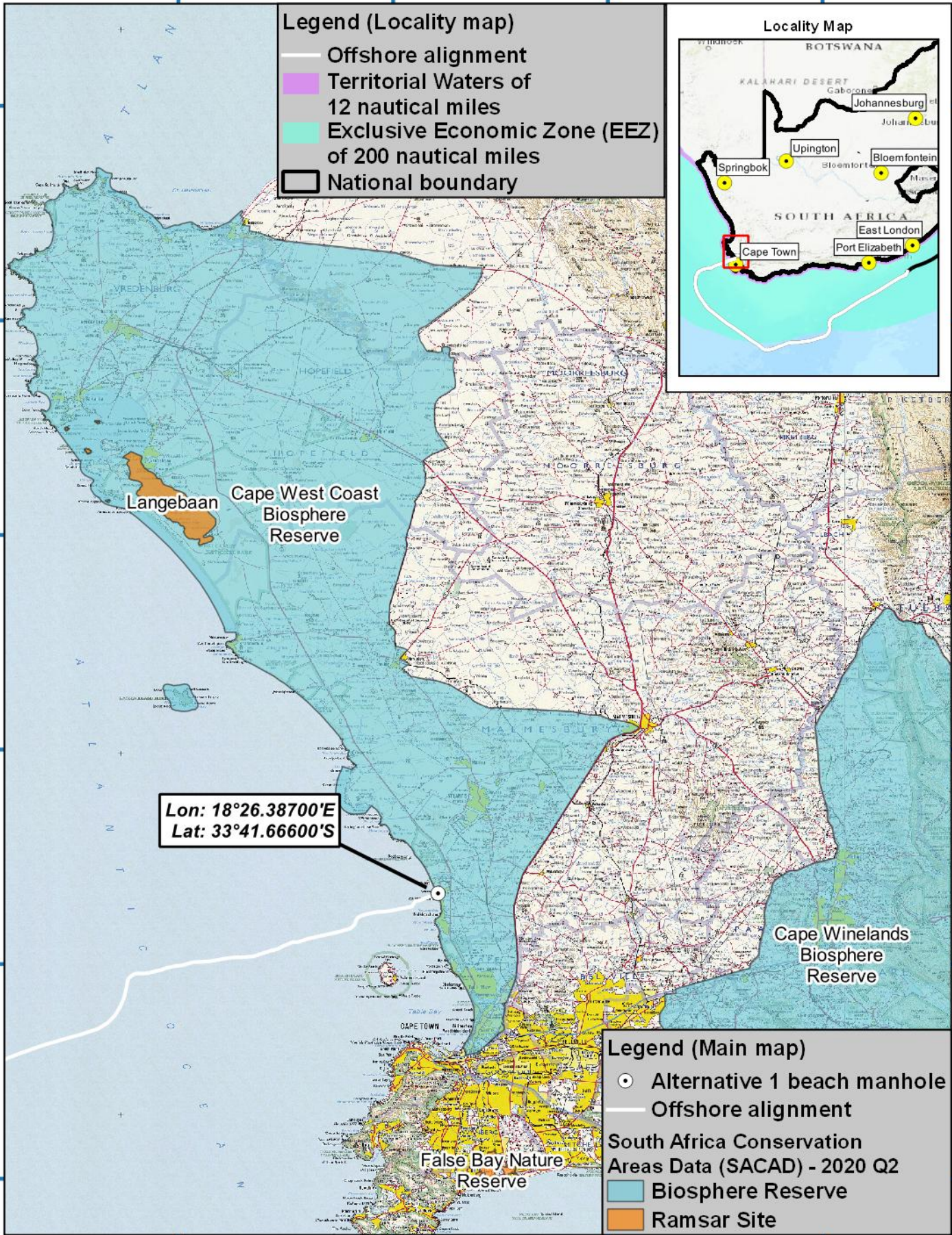
18°4'54"E 18°22'41"E 18°40'28"E 18°58'15"E

32°36'22"S
32°54'9"S
33°11'56"S
33°29'43"S
33°47'30"S
34°5'18"S

32°36'22"S
32°54'9"S
33°11'56"S
33°29'43"S
33°47'30"S
34°5'18"S

Legend (Locality map)

- Offshore alignment
- Territorial Waters of 12 nautical miles
- Exclusive Economic Zone (EEZ) of 200 nautical miles
- National boundary



Lon: 18°26.38700'E
Lat: 33°41.66600'S

Legend (Main map)

- Alternative 1 beach manhole
- Offshore alignment

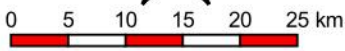
South Africa Conservation Areas Data (SACAD) - 2020 Q2

- Biosphere Reserve
- Ramsar Site

18°4'54"E 18°22'41"E 18°40'28"E 18°58'15"E

Mapping and layout by

For Giles Churchill



1:500000

when printed at A4 (297 x 210 mm)

Date of print: 06 Nov 2020

Co-Ordinate system
Projection: Transverse Mercator
Datum: Harthebeeshoek 1994
Ellipsoid: WGS84
Meridian: Lo19°
Units: Metres

Main map grid coordinates
Degrees and Decimal Minutes

Distance notes

1 nautical mile = 1.852km

1km = 0.539957nm

2AFRICA Landing

Duynfontein

Offshore alignment
with South Africa Conservation
Areas Data (SACAD) - 2020 Q2

18°20 179'E 18°21 976'E 18°23 774'E 18°25 572'E 18°27 370'E 18°29 167'E

33°35 197'S
33°36 994'S
33°38 792'S
33°40 590'S
33°42 387'S
33°44 185'S
33°45 983'S
33°47 781'S
33°49 578'S

33°35 197'S
33°36 994'S
33°38 792'S
33°40 590'S
33°42 387'S
33°44 185'S
33°45 983'S
33°47 781'S
33°49 578'S

Legend (Main map)

- Alternative 1 beach manhole
- Alternative 2 beach manhole
- MTN CLS
- Alternative 2 front haul alignment
- Existing ACE front haul
- Offshore alignment
- Landing site and onshore alignment buffer (500m)
- River lines (NGI)
- ▨ Wetlands (CTT 2017)

Critical Biodiversity Area category (CTT 2017):

- Protected: In Perpetuity
- Protected: Not In Perpetuity
- Conservation Area
- CBA 1a
- CBA 1b
- CBA 1c
- CBA 1d
- CBA 1e
- CBA 2
- ESA
- OESA
- Other Natural Areas

Critical Biodiversity Area Category	Definition
Conservation Area	Protected Area that is not yet proclaimed
CBA 1b	Irreplaceable High and Medium Condition site
CBA 1d	Irreplaceable Consolidation site
CBA 1e	Connectivity site
ESA	
CESA	Transformed site of conservation significance
Other Natural Vegetation/Areas	Unselected Natural Vegetation: high/med/restorable condition

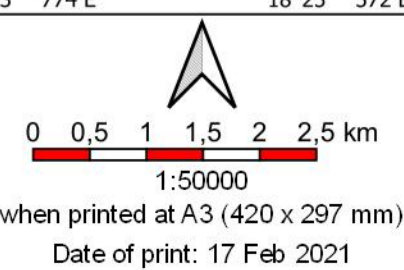
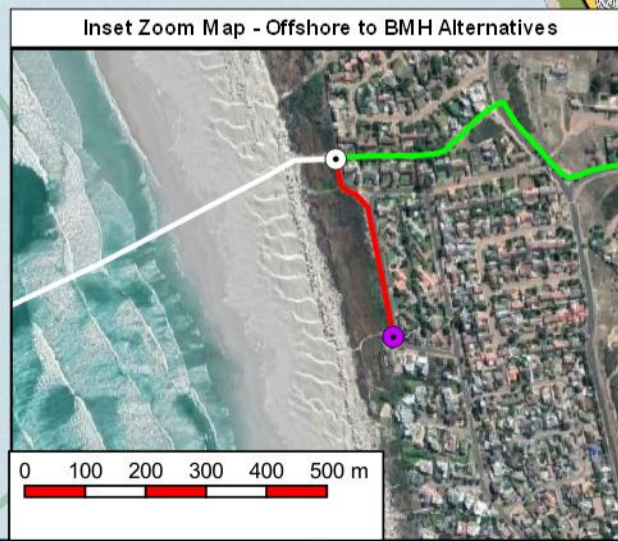
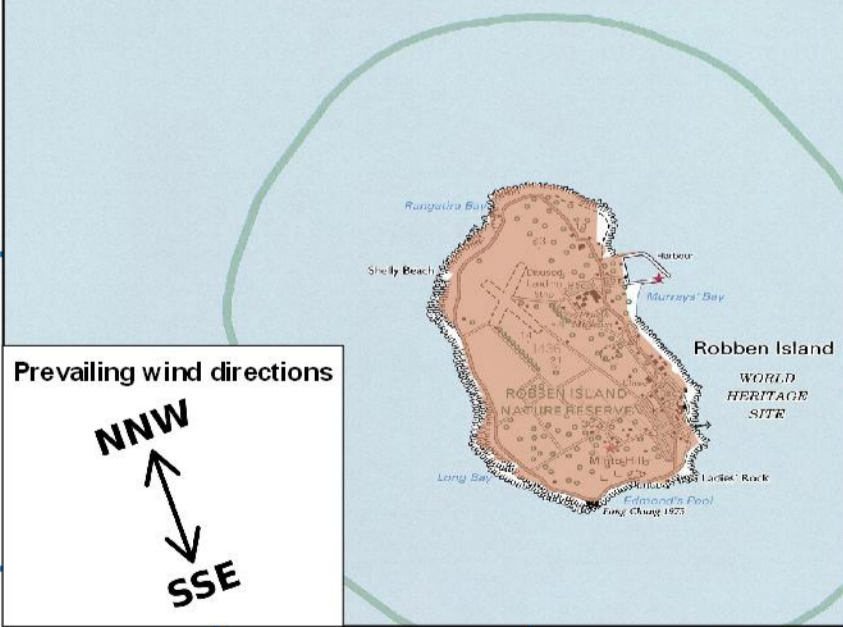
Locality Map



Legend (Locality map)

- Offshore alignment
- Offshore Trunk line
- Territorial Waters of 12 nautical miles
- Exclusive Economic Zone (EEZ) of 200 nautical miles
- National boundary

Lon: 18°26.38700'E
Lat: 33°41.66600'S



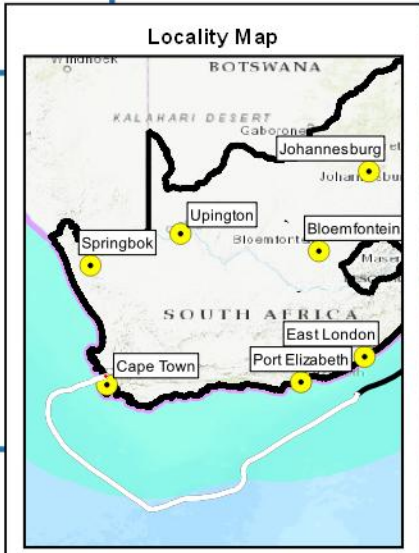
Co-Ordinate system
Projection: Unprojected (Geographic)
Ellipsoid: WGS84
Units: Decimal Degrees
Main map grid coordinates
Degrees and Decimal Minutes
Distance notes
1 nautical mile = 1.852km
1km = 0.539957m

- 2AFRICA Landing
- Duynfontein
- Locality Map

18°26 145'E 18°26 374'E 18°26 603'E 18°26 832'E 18°27 061'E

33°41 022'S
33°41 251'S

33°41 022'S
33°41 251'S



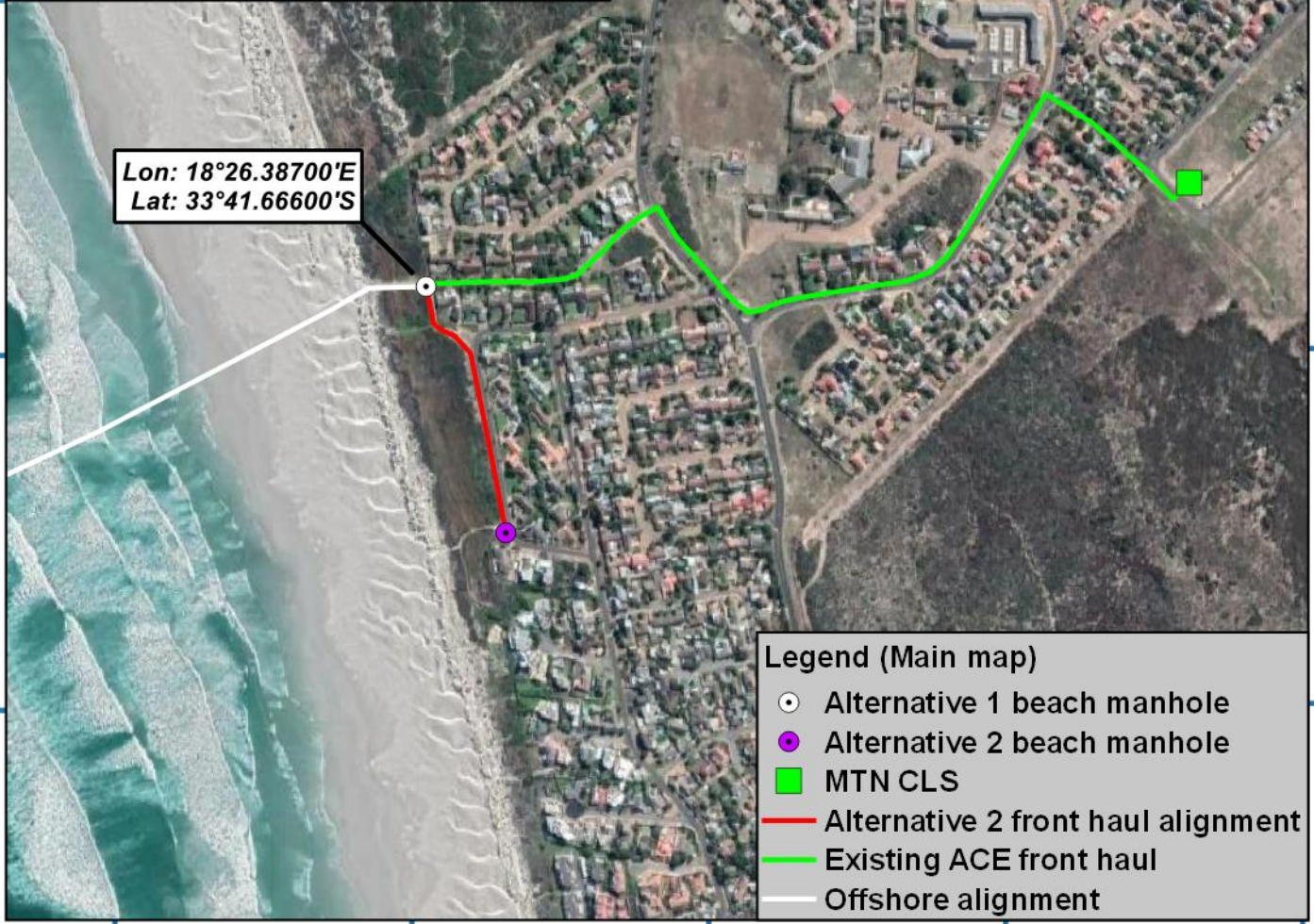
Legend (Locality map)

- Offshore alignment
- Territorial Waters of 12 nautical miles
- Exclusive Economic Zone (EEZ) of 200 nautical miles
- National boundary

Lon: 18°26.38700'E
Lat: 33°41.66600'S

33°41 480'S
33°41 709'S

33°41 480'S
33°41 709'S



Legend (Main map)

- Alternative 1 beach manhole
- Alternative 2 beach manhole
- MTN CLS
- Alternative 2 front haul alignment
- Existing ACE front haul
- Offshore alignment

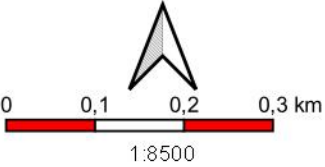
33°41 938'S

33°41 938'S

18°26 145'E 18°26 374'E 18°26 603'E 18°26 832'E 18°27 061'E

Mapping and layout by **S3 Technologies** Spatial Systems Solutions

For Giles Churchill **acer AFRICA**



when printed at A4 (297 x 210 mm)
Date of print: 10 Feb 2021

Co-Ordinate system
Projection: Transverse Mercator
Datum: Harthebeeshoek 1994
Ellipsoid: WGS84
Meridian: Lo19°
Units: Metres

Main map grid coordinates
Degrees and Decimal Minutes

Distance notes
1 nautical mile = 1.852km
1km = 0.539957nmi

2AFRICA Landing

Duynfontein

Onshore alignment with alternatives, landing point and other points of interest

18°26.319'E 18°26.346'E 18°26.373'E 18°26.400'E 18°26.427'E

33°41.600'S
33°41.627'S
33°41.654'S
33°41.681'S
33°41.708'S

33°41.600'S
33°41.627'S
33°41.654'S
33°41.681'S
33°41.708'S



Legend (Locality map)

- Offshore alignment
- Territorial Waters of 12 nautical miles
- Exclusive Economic Zone (EEZ) of 200 nautical miles
- National boundary



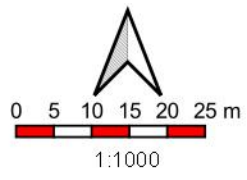
Legend (Main map)

- ACE Anchor Block
- Alternative 1 beach manhole
- Alternative 2 front haul alignment
- Existing ACE front haul
- Offshore alignment

18°26.319'E 18°26.346'E 18°26.373'E 18°26.400'E 18°26.427'E

Mapping and layout by **S3 Technologies** **acer AFRICA**

For Giles Churchill



when printed at A4 (297 x 210 mm)
Date of print: 16 Mar 2021

Co-Ordinate system
Projection: Transverse Mercator
Datum: Harthebeeshoek 1994
Ellipsoid: WGS84
Meridian: Lo19°
Units: Metres

Main map grid coordinates
Degrees and Decimal Minutes

Distance notes
1 nautical mile = 1.852km
1km = 0.539957km

2AFRICA Landing

Duynfontein

Onshore alignment with alternatives, landing point and other points of interest

2 AFRICA GERA (EAST)

DUYNEFONTEIN

SEGMENT E01_01

**CHART SHOWING 2 AFRICA (EAST)
PROPOSED ROUTES FOR SYSTEM
CABLE APPROACH AND EARTH PLATE**

ACE SYSTEM
& EARTH CABLES



2 AFRICA PROPOSED
SYSTEM & EARTH
ROUTE



SEA EARTH PLATE



BMH POSITION 33° 41.666'S 18° 26.387'E

EARTH PLATE 33° 41.716'S 18° 26.274'E



This document may only be used for the purpose for which it was commissioned and in accordance with the terms of engagement for that commission.
Unauthorised use of this document in any form whatsoever is undertaken entirely at the user's risk

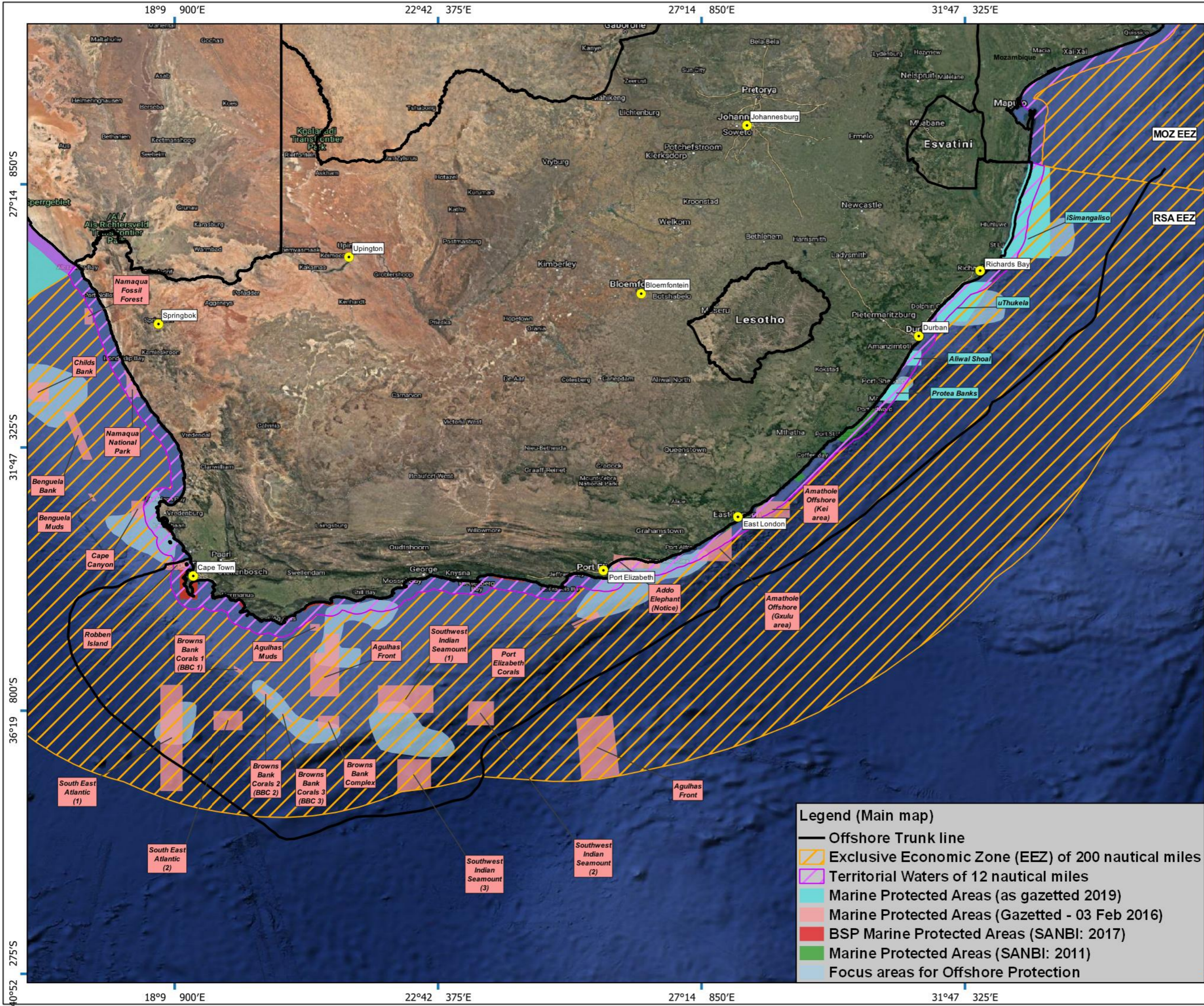
2 AFRICA (EAST) CABLE SYSTEM SEGMENT E01_01
DUYNEFONTEIN EARTH PLATE
CHART NO.01 OF 01

Contact Details:

Max Boyce – Cable Route Engineer, Alcatel Submarine Networks,
Christchurch way, Greenwich, SE10 0AG. UK.
max.boyce@asn.com

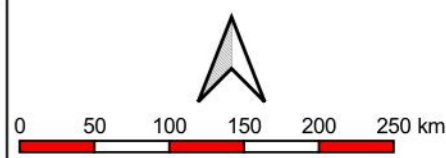
REV	DESCRIPTION	BY	CHKD	APPR
1	Issued for Review	MB	MB	JC
2	Adjusted for Topo Survey	MB	MB	JC





2AFRICA Landing
Duynefontein
Locality Map with trunk line to Mozambique and Marine Protected Areas

27°14' 850'S
 31°47' 325'S
 36°19' 800'S
 40°52' 275'S



1:4250000
 when printed at A3 (297 x 420 mm)

Co-Ordinate system
 Projection: Unprojected (Geographic)
 Ellipsoid: WGS84
 Units: Decimal Degrees
 Main map grid coordinates
 Degrees and Decimal Minutes

Distance notes
 1 nautical mile = 1.852km
 1km = 0.539957km



For Giles Churchill



Date of print: 09 Nov 2020

- Legend (Main map)**
- Offshore Trunk line
 - Exclusive Economic Zone (EEZ) of 200 nautical miles
 - Territorial Waters of 12 nautical miles
 - Marine Protected Areas (as gazetted 2019)
 - Marine Protected Areas (Gazetted - 03 Feb 2016)
 - BSP Marine Protected Areas (SANBI: 2017)
 - Marine Protected Areas (SANBI: 2011)
 - Focus areas for Offshore Protection

18°9' 900'E
 22°42' 375'E
 27°14' 850'E
 31°47' 325'E
 36°19' 800'S
 40°52' 275'S

17°24'10"E

17°57'51"E

18°31'32"E

19°5'13"E

35°22'1"S
35°55'42"S

35°22'1"S
35°55'42"S

36°29'23"S

36°29'23"S

37°3'4"S

37°3'4"S

37°36'45"S

37°36'45"S

17°24'10"E

17°57'51"E

18°31'32"E

19°5'13"E

Locality Map

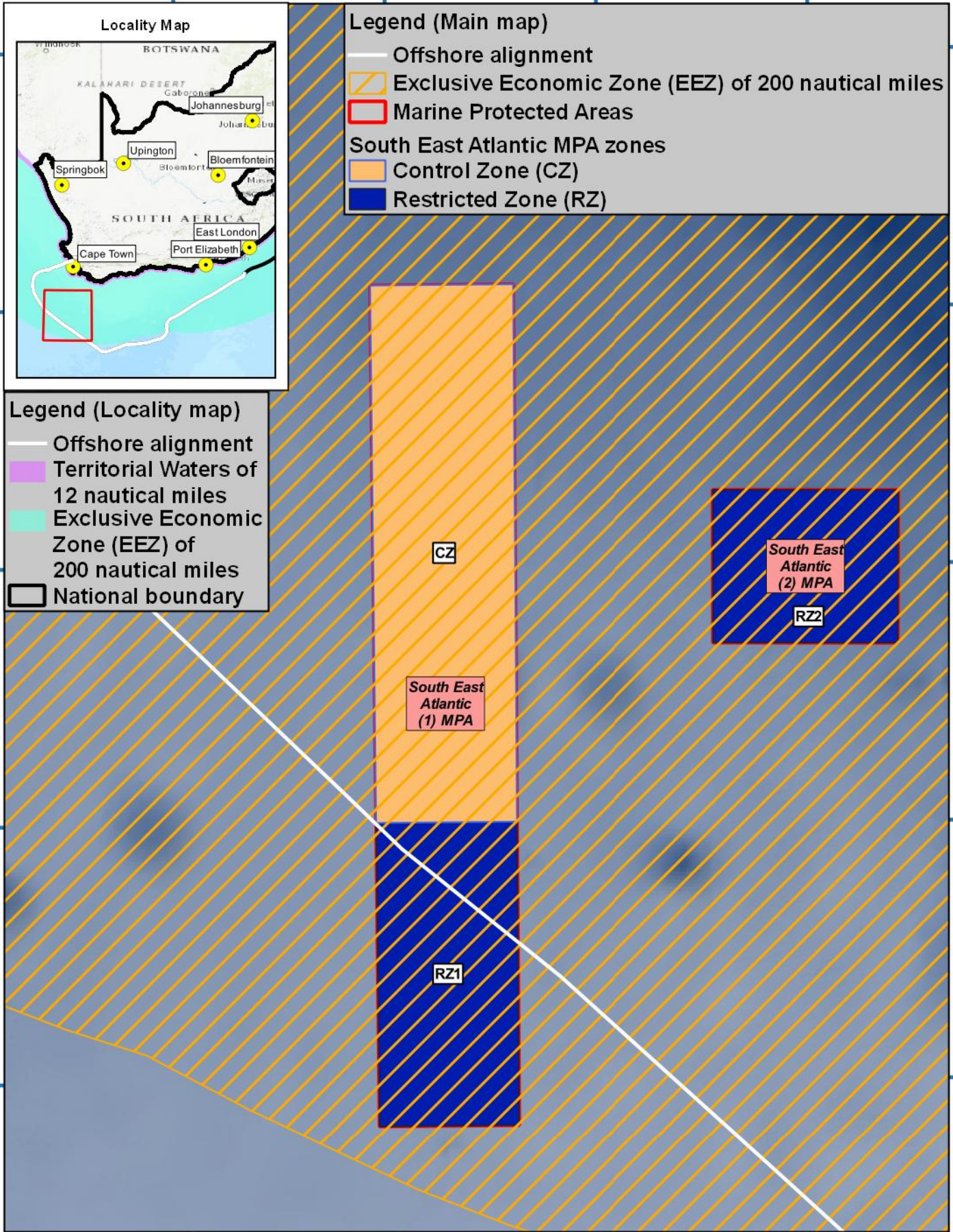


Legend (Locality map)

- Offshore alignment
- Territorial Waters of 12 nautical miles
- Exclusive Economic Zone (EEZ) of 200 nautical miles
- National boundary

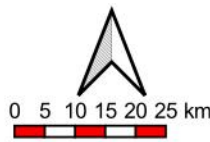
Legend (Main map)

- Offshore alignment
- Exclusive Economic Zone (EEZ) of 200 nautical miles
- Marine Protected Areas
- South East Atlantic MPA zones
- Control Zone (CZ)
- Restricted Zone (RZ)



Mapping and layout by

For Giles Churchill



when printed at A4 (297 x 210 mm)
Date of print: 17 Mar 2021

Co-Ordinate system
Projection: Transverse Mercator
Datum: Hartbeeshoek 1994
Ellipsoid: WGS84
Meridian: Lo19°
Units: Metres

Distance notes

1 nautical mile = 1.852km
1km = 0.539957nmi

2AFRICA Landing

Duynfontein

Offshore alignment RSA
territorial waters focusing on the
South East Atlantic Seamount MPA

18°4'39"E

18°11'23"E

18°18'7"E

18°24'51"E

33°27'36"S

33°34'20"S

33°41'5"S

33°47'49"S

33°54'33"S

33°27'36"S

33°34'20"S

33°41'5"S

33°47'49"S

33°54'33"S

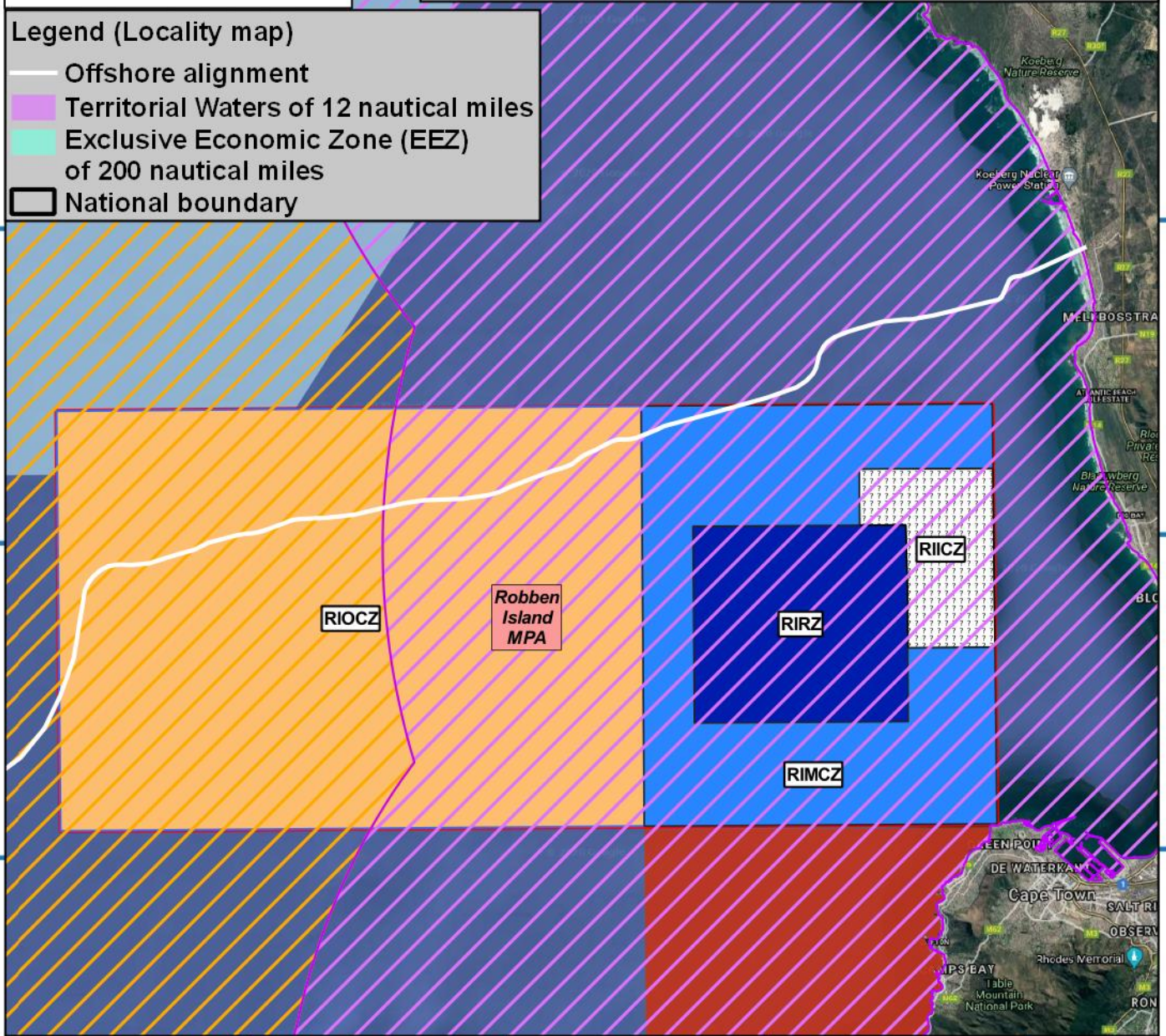


Legend (Main map)

- Offshore alignment
- ▨ Territorial Waters of 12 nautical miles
- ▨ Exclusive Economic Zone (EEZ) of 200 nautical miles
- Robben island MPA zones**
- ▨ Middle Control Zone (RIMCZ)
- ▨ Middle Inner Zone (RIICZ)
- ▨ Offshore Control Zone (RIOCZ)
- ▨ Restricted Zone (RIRZ)
- ▨ BSP Marine Protected Areas (SANBI: 2017)
- ▨ Marine Protected Areas (Gazetted - 03 Feb 2016)
- ▨ Marine Protected Areas (SANBI: 2011)
- ▨ Focus areas for Offshore Protection

Legend (Locality map)

- Offshore alignment
- ▨ Territorial Waters of 12 nautical miles
- ▨ Exclusive Economic Zone (EEZ) of 200 nautical miles
- ▭ National boundary



18°4'39"E

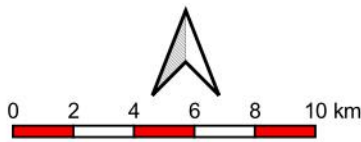
18°11'23"E

18°18'7"E

18°24'51"E

Mapping and layout by

For Giles Churchill



1:250000

when printed at A4 (297 x 210 mm)

Date of print: 09 Nov 2020

Co-Ordinate system
 Projection: Transverse Mercator
 Datum: Hartbeeshoek 1994
 Ellipsoid: WGS84
 Meridian: Lo19°
 Units: Metres

Distance notes

1 nautical mile = 1.852km

1km = 0.539957km

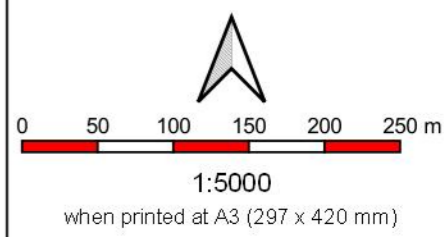
2AFRICA Landing

Duynfontein

Offshore alignment
 RSA territorial waters
 focusing on Robben Island MPA



2AFRICA Landing
Duynefortein
Onshore alignment with alternatives, Sensitivity and Specialist assessments



Co-Ordinate system
 Projection: Transverse Mercator
 Datum: Hartebeeshoek 1994
 Ellipsoid: WGS84
 Meridian: Lo19°
 Units: Metres

Main map grid coordinates
 Degrees and Decimal Minutes

Distance notes
 1 nautical mile = 1.852km
 1km = 0.539957km



For Giles Churchill



Date of print: 10 Feb 2021

- | | | |
|--|--|--------------------------|
| Legend (Main map) | | |
| MTN CLS | Longitudinal dune crest | Wetlands |
| Offshore alignment | Transverse dune crest | Protected: In Perpetuity |
| Alternative 2 front haul alignment | Moist frontal dune slack | CBA 1b |
| Existing ACE front haul | Wetlands (Specialist assessment) | CBA 1e |
| SANBI Vegmap (2018 Beta) | Dune slack wetland | Other Natural Areas |
| Atlantis Sand Fynbos | Disturbed vegetation (Specialist assessment) | |
| Cape Flats Dune Strandveld | Natural Vegetation | |
| Cape Seashore Vegetation | Stormwater Facility (Reed dominated) | |
| Threatened ecosystems remaining (SANBI 2011) | Road | |
| Critically Endangered | | |
| Endangered | | |

18°26 374'E 18°26 603'E 18°26 832'E 18°27 061'E

33°40 793'S
33°41 022'S
33°41 251'S
33°41 480'S
33°41 709'S

33°40 793'S
33°41 022'S
33°41 251'S
33°41 480'S
33°41 709'S



FARM 1552

Legend (Locality map)

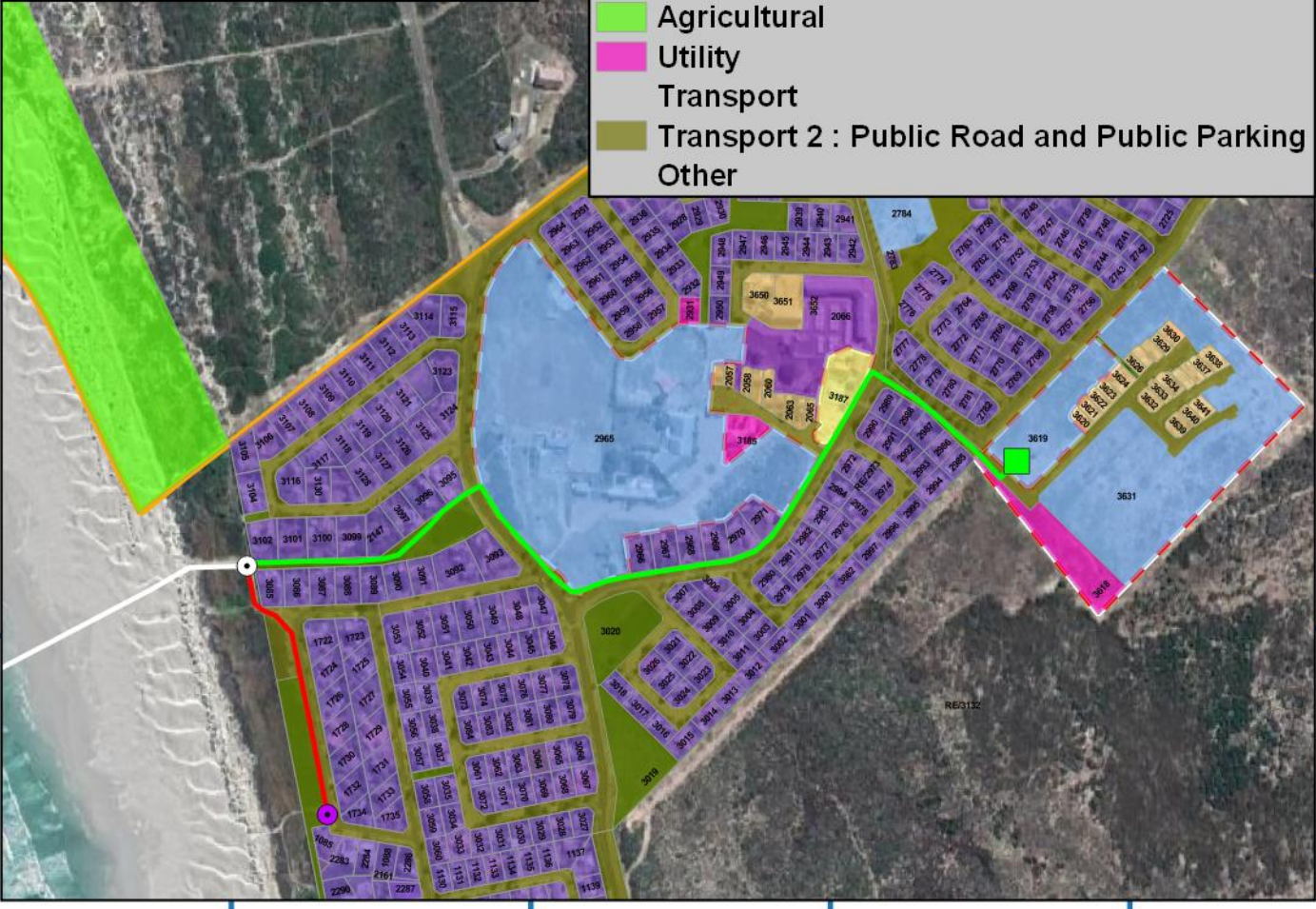
- Offshore alignment
- Territorial Waters of 12 nautical miles
- Exclusive Economic Zone (EEZ) of 200 nautical miles
- National boundary

Legend (Main map)

- Alternative 1 beach manhole
- Alternative 2 beach manhole
- MTN CLS
- Alternative 2 front haul alignment
- Existing ACE front haul
- Offshore alignment
- ▭ Affected cadastral

City of Cape Town cadastral zonations (2017)

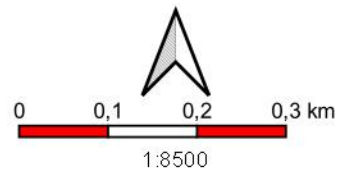
- Community
- Community 1 : Local
- Open Space 2 : Public Open Space
- Business/Industry
- General Business 1
- Local Business 2 : Local Business
- Residential/Rural
- General Residential 1 : Group Housing
- General Residential 2
- Single Residential 1 : Conventional Housing
- General
- Agricultural
- Utility
- Transport
- Transport 2 : Public Road and Public Parking
- Other



18°26 374'E 18°26 603'E 18°26 832'E 18°27 061'E

Mapping and layout by
S3 Technologies
Spatial Systems Solutions
Pty Ltd

For Giles Churchill
acer
AFRICA



when printed at A4 (297 x 210 mm)
Date of print: 10 Feb 2021

Co-Ordinate system
Projection: Transverse Mercator
Datum: Harthebeeshoek 1994
Ellipsoid: WGS84
Meridian: Lo19°
Units: Metres

Main map grid coordinates
Degrees and Decimal Minutes

Distance notes
1 nautical mile = 1.852km
1km = 0.539957nm

2AFRICA Landing

Duynfontein

Onshore alignment with alternatives, landing point and cadastral with zonations

18°26 374'E 18°26 603'E 18°26 832'E 18°27 061'E

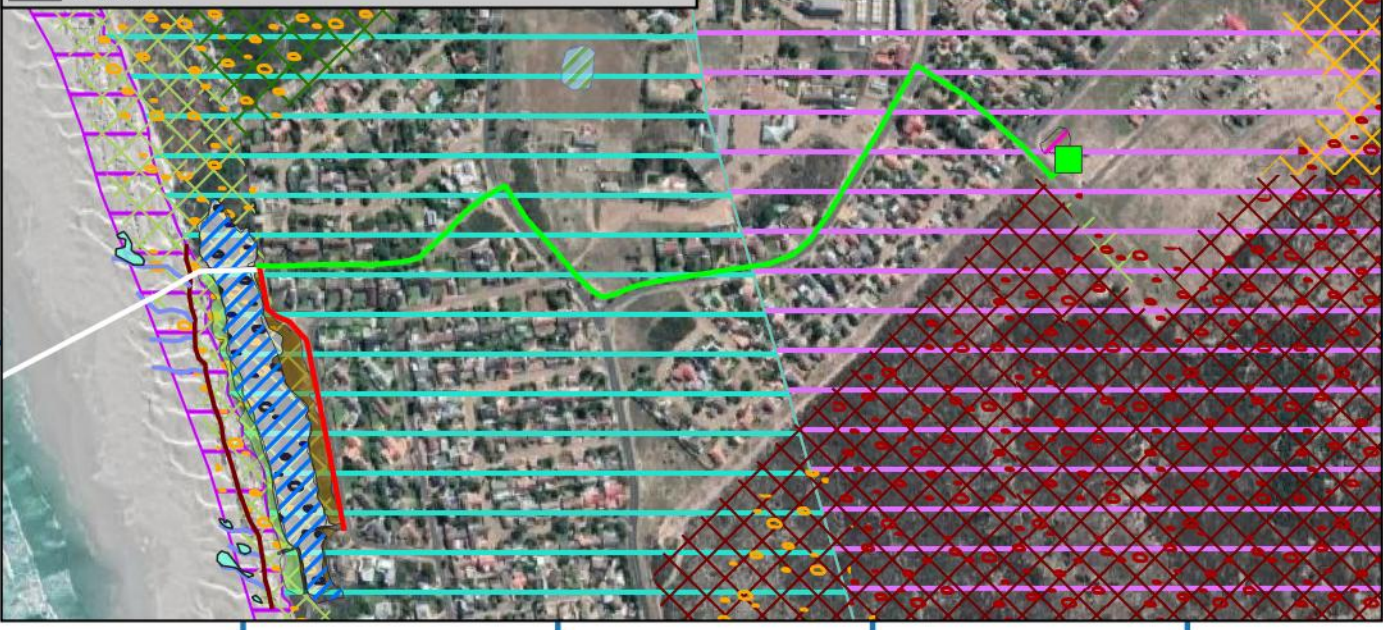
793°S
33°40
022°S
33°41
251°S
33°41
480°S
33°41
709°S

33°40
793°S
33°41
022°S
33°41
251°S
33°41
480°S
33°41
709°S

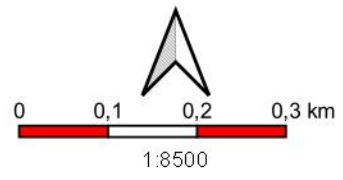
- Legend (Main map)**
- MTN CLS
 - Alternative 2 front haul alignment
 - Existing ACE front haul
- Key morphological features**
- Longitudinal dune crest
 - Transverse dune crest
 - Moist frontal dune slack
- SANBI Vegmap (2018 Beta)**
- ▨ Atlantis Sand Fynbos
 - ▨ Cape Flats Dune Strandveld
 - ▨ Cape Seashore Vegetation
- Critical Biodiversity Area category (CTT 2017):**
- ▨ Protected: In Perpetuity
 - ▨ CBA 1b
 - ▨ CBA 1e
 - ▨ Other Natural Areas
- Threatened ecosystems remaining (SANBI 2011)**
- Critically Endangered
 - Endangered
- Wetlands (Specialist assessment)**
- ▨ Artificial wetland
 - ▨ Dune slack wetland
- Disturbance units (Specialist assessment)**
- ▨ Disturbed vegetation (Alien vegetation)
 - ▨ Natural Vegetation
 - ▨ Stormwater Facility (Reed dominated)
 - ▨ Road



- Legend (Locality map)**
- Offshore alignment
 - ▨ Territorial Waters of 12 nautical miles
 - ▨ Exclusive Economic Zone (EEZ) of 200 nautical miles
 - ▭ National boundary



18°26 374'E 18°26 603'E 18°26 832'E 18°27 061'E



Co-Ordinate system
Projection: Transverse Mercator
Datum: Harthebeeshoek 1994
Ellipsoid: WGS84
Meridian: Lo19°
Units: Metres

Main map grid coordinates
Degrees and Decimal Minutes

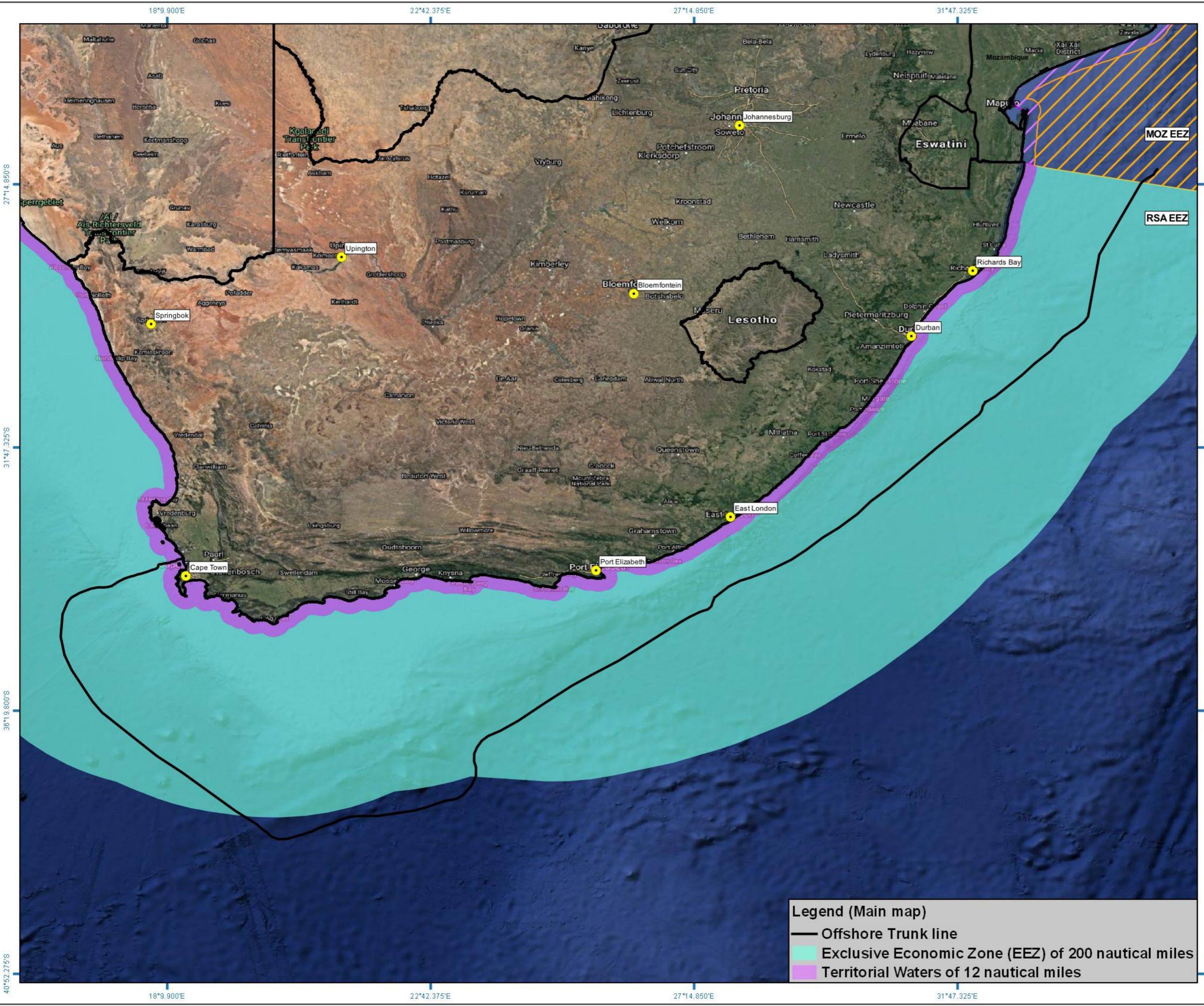
Distance notes
1 nautical mile = 1.852km
1km = 0.539957km

2AFRICA Landing

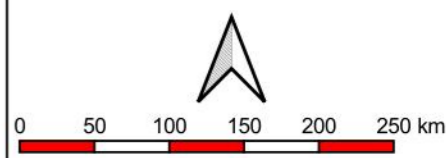
Duynfontein

Onshore alignment with alternatives, Sensitivity and Specialist assessments

when printed at A4 (297 x 210 mm)
Date of print: 10 Feb 2021



2AFRICA Landing
Duynefontein
Locality Map with offshore alignment and trunk line to Mozambique



1:4250000
 when printed at A3 (297 x 420 mm)

Co-Ordinate system
 Projection: Unprojected (Geographic)
 Ellipsoid: WGS84
 Units: Decimal Degrees
 Main map grid coordinates
 Degrees and Decimal Minutes

Distance notes
 1 nautical mile = 1.852km
 1km = 0.539957km



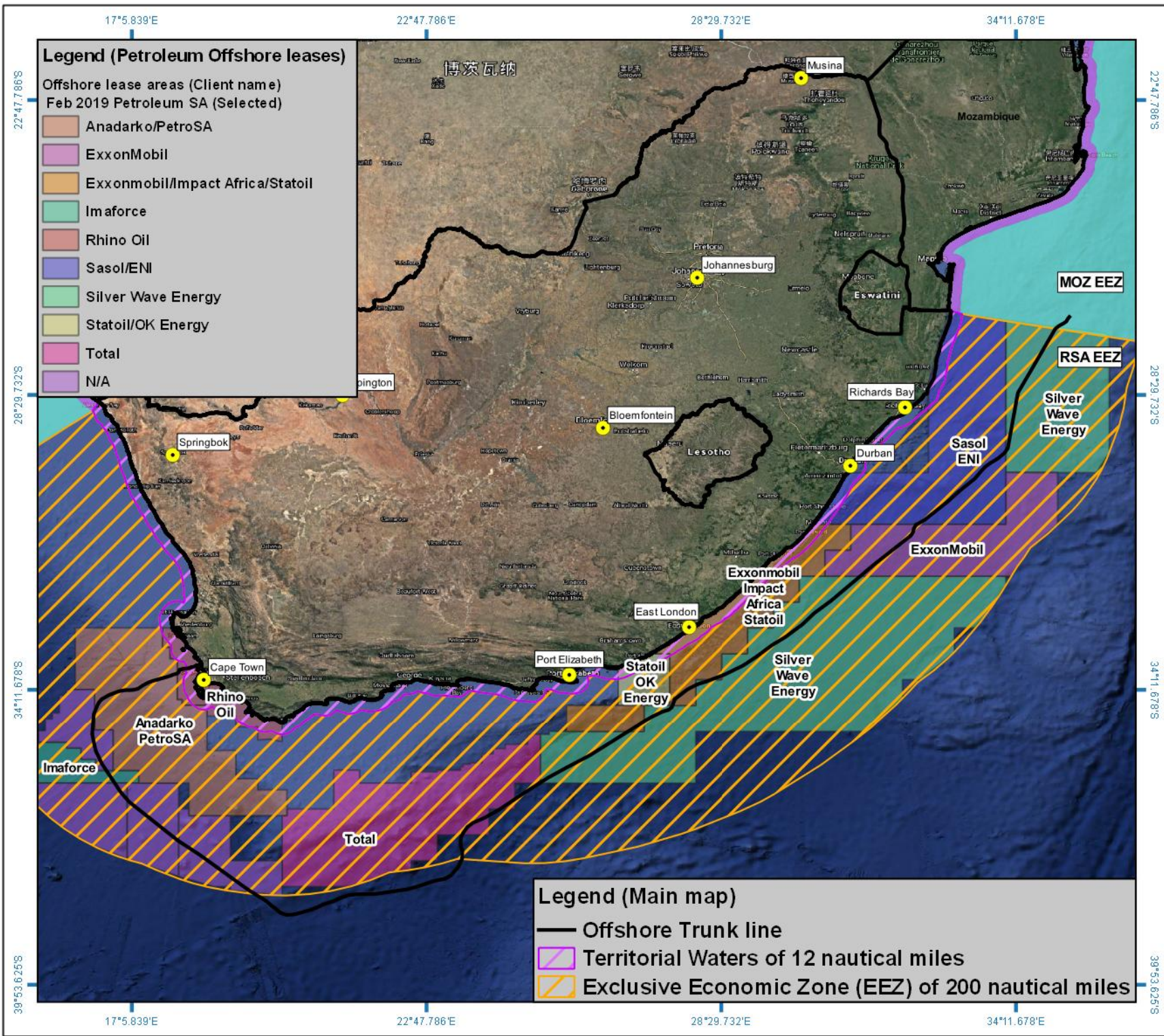
For Giles Churchill



Date of print: 26 Oct 2020

Legend (Main map)

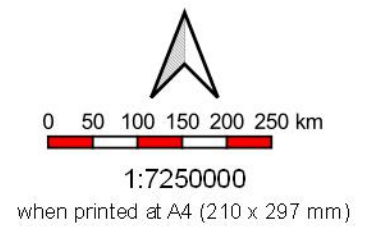
- Offshore Trunk line
- Exclusive Economic Zone (EEZ) of 200 nautical miles
- Territorial Waters of 12 nautical miles



2AFRICA Landing

Duynfontein

Locality Map with offshore alignment and trunk line to Mozambique



Co-Ordinate system
 Projection: Unprojected (Geographic)
 Ellipsoid: WGS84
 Units: Decimal Degrees

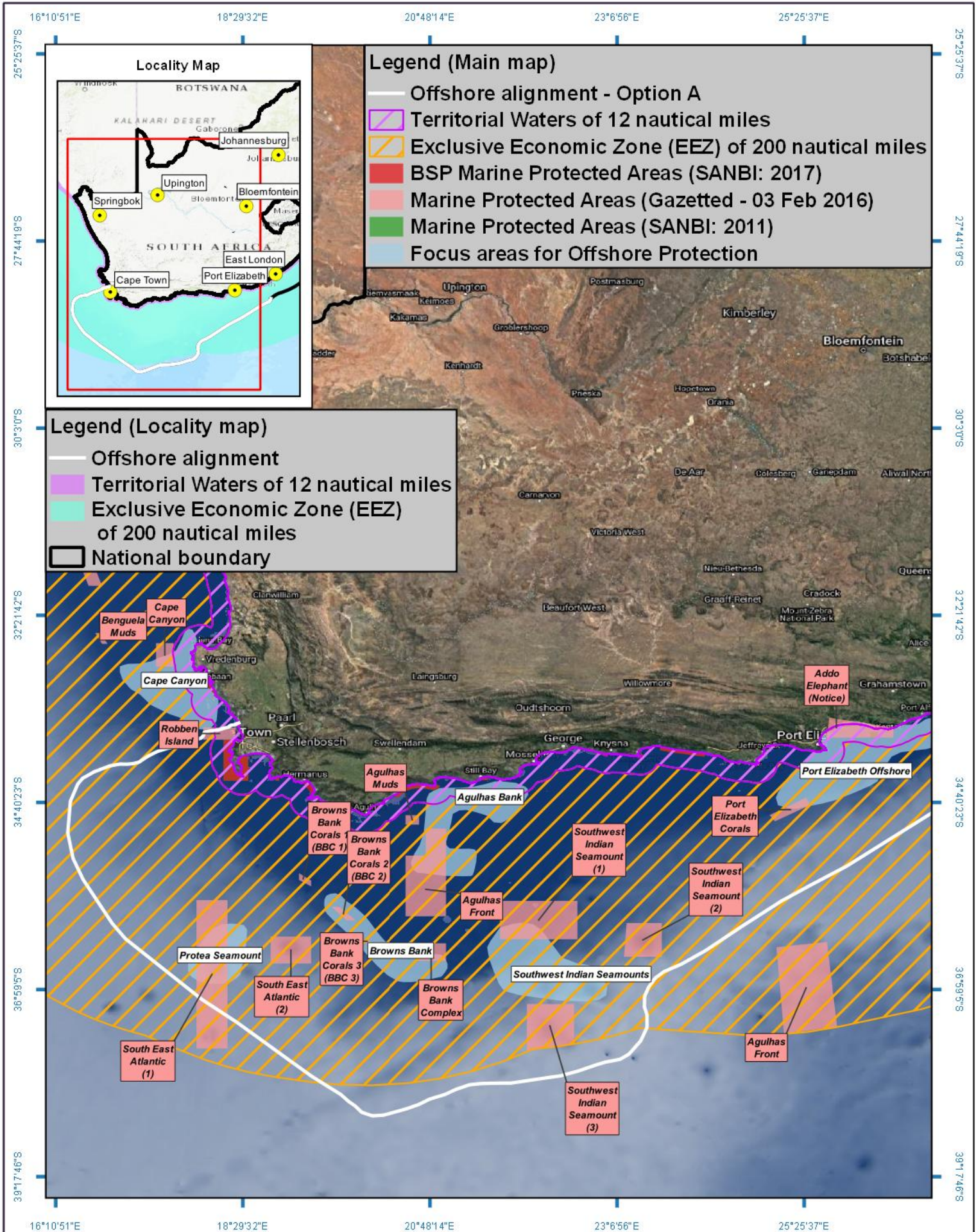
Main map grid coordinates
 Degrees and Decimal Minutes

Distance notes
 1 nautical mile = 1.852km
 1km = 0.539957km



For Giles Churchill





17°57'54"E 18°4'38"E 18°11'22"E 18°18'6"E 18°24'51"E



Legend (Main map)

- Offshore alignment
- ▨ Territorial Waters of 12 nautical miles
- ▨ Exclusive Economic Zone (EEZ) of 200 nautical miles
- BSP Marine Protected Areas (SANBI: 2017)
- Marine Protected Areas (Gazetted - 03 Feb 2016)
- Marine Protected Areas (SANBI: 2011)
- Focus areas for Offshore Protection

Legend (Locality map)

- Offshore alignment
- ▨ Territorial Waters of 12 nautical miles
- ▨ Exclusive Economic Zone (EEZ) of 200 nautical miles
- ▭ National boundary



17°57'54"E 18°4'38"E 18°11'22"E 18°18'6"E 18°24'51"E

Mapping and layout by **S3 Technologies** Spatial Systems Solutions

For Giles Churchill **acer AFRICA**

Scale bar: 0 2 4 6 8 10 km

1:250000

when printed at A4 (297 x 210 mm)

Date of print: 26 Oct 2020

Co-Ordinate system
 Projection: Transverse Mercator
 Datum: Hartebeeshoek 1994
 Ellipsoid: WGS84
 Meridian: Lo19°
 Units: Metres

Distance notes
 1 nautical mile = 1.852km
 1km = 0.539957nmi

2AFRICA Landing

Duynfontein

**Offshore alignment
 RSA territorial waters
 focusing on Robben Island MPA**

33°34'19"S 33°41'3"S 33°47'48"S 33°54'32"S

33°34'19"S 33°41'3"S 33°47'48"S 33°54'32"S