

18°20.179'E 18°21.976'E 18°23.774'E 18°25.572'E 18°27.370'E 18°29.167'E

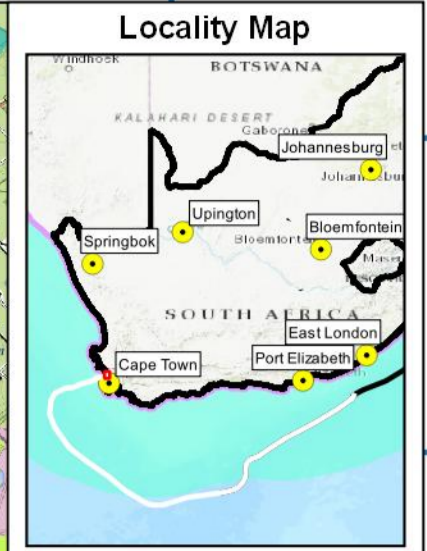
Legend (Main map)

- Alternative 1 beach manhole
- Alternative 2 beach manhole
- MTN CLS
- Alternative 2 front haul alignment
- Existing ACE front haul
- Offshore alignment
- Rivers (NFEPA)
- ▨ Wetlands

Critical Biodiversity Area category:

- Protected: In Perpetuity
- Protected: Not In Perpetuity
- Conservation Area
- CBA 1a
- CBA 1b
- CBA 1c
- CBA 1d
- CBA 1e
- CBA 2
- ESA
- OESA
- Other Natural Areas

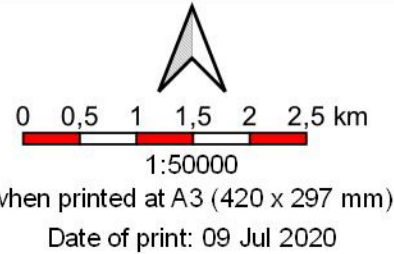
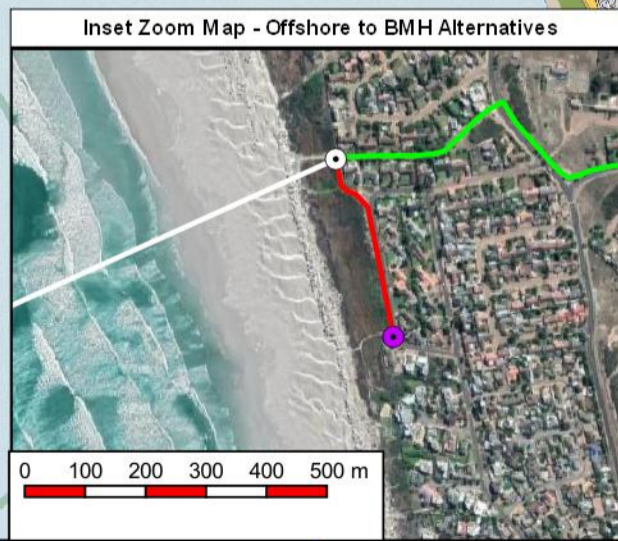
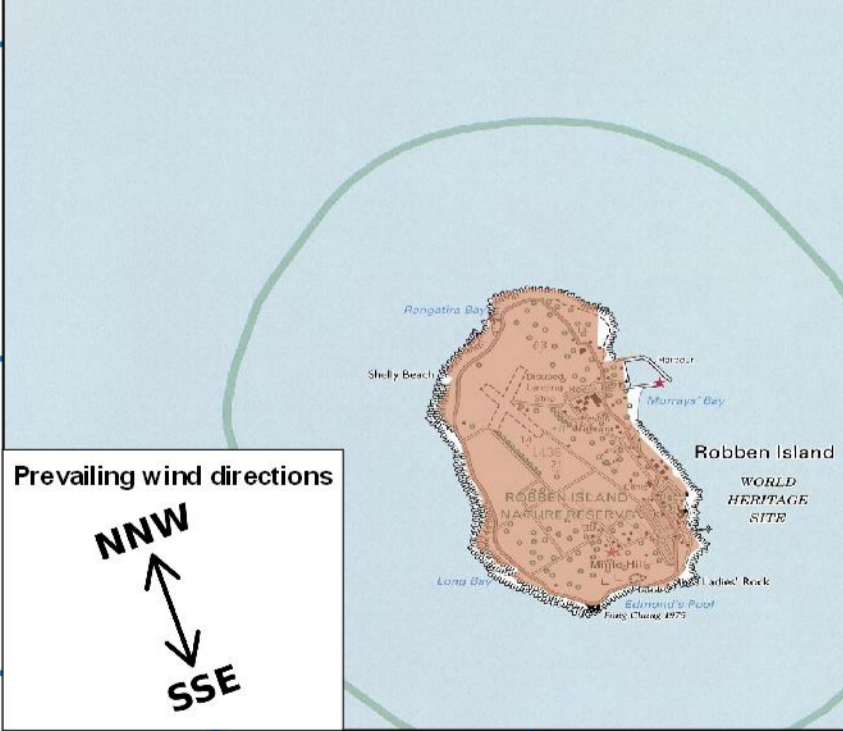
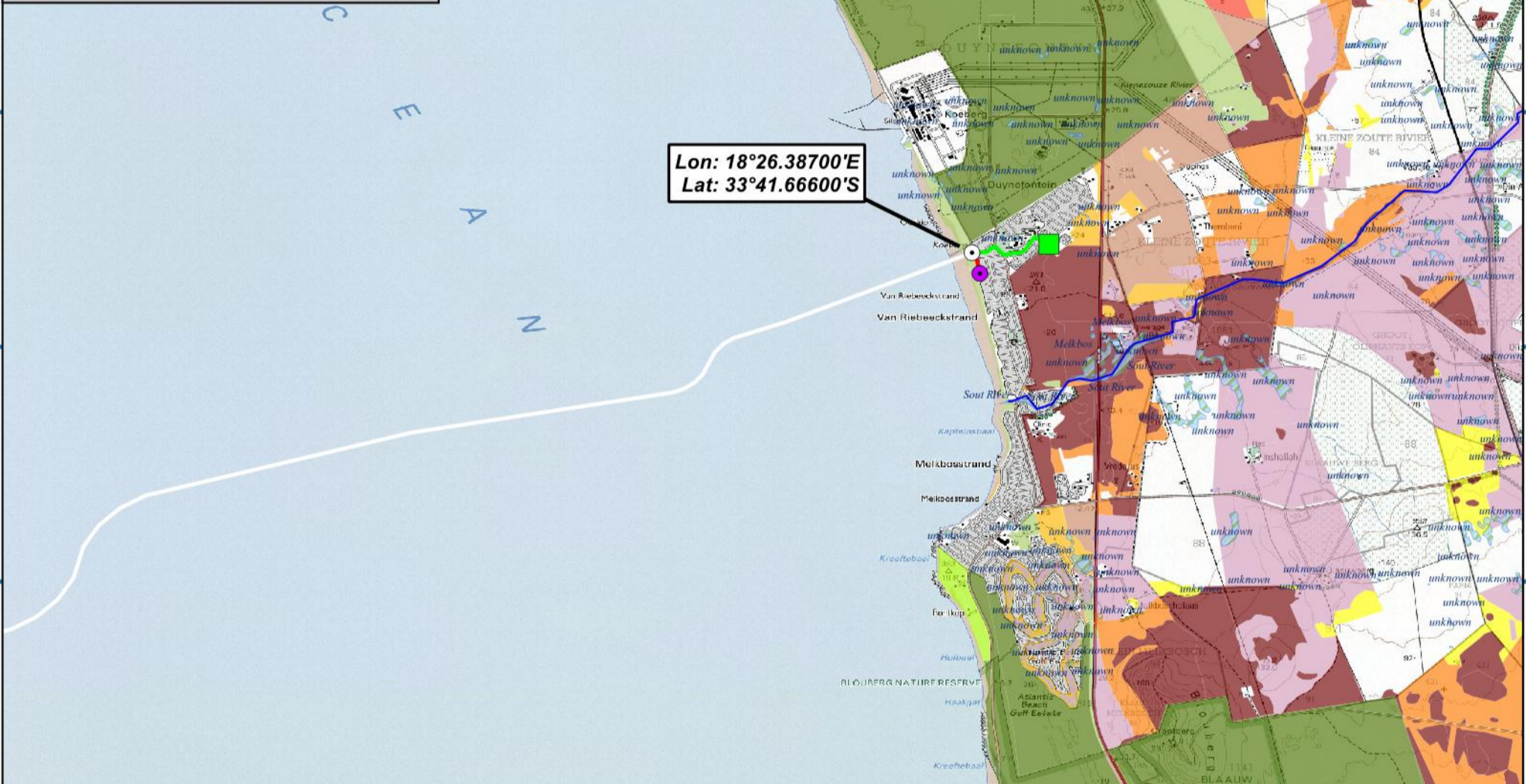
Critical Biodiversity Area Category	Definition
Conservation Area	Protected Area that is not yet proclaimed
CBA 1b	Irreplaceable High and Medium Condition site
CBA 1d	Irreplaceable Consolidation site
CBA 1e	Connectivity site
ESA	
CESA	Transformed site of conservation significance
Other Natural Vegetation/Areas	Unselected Natural Vegetation: high/med/restorable condition



Legend (Locality map)

- Offshore alignment
- Offshore Trunk line
- Territorial Waters of 12 nautical miles
- Exclusive Economic Zone (EEZ) of 200 nautical miles
- National boundary

Lon: 18°26.38700'E
Lat: 33°41.66600'S

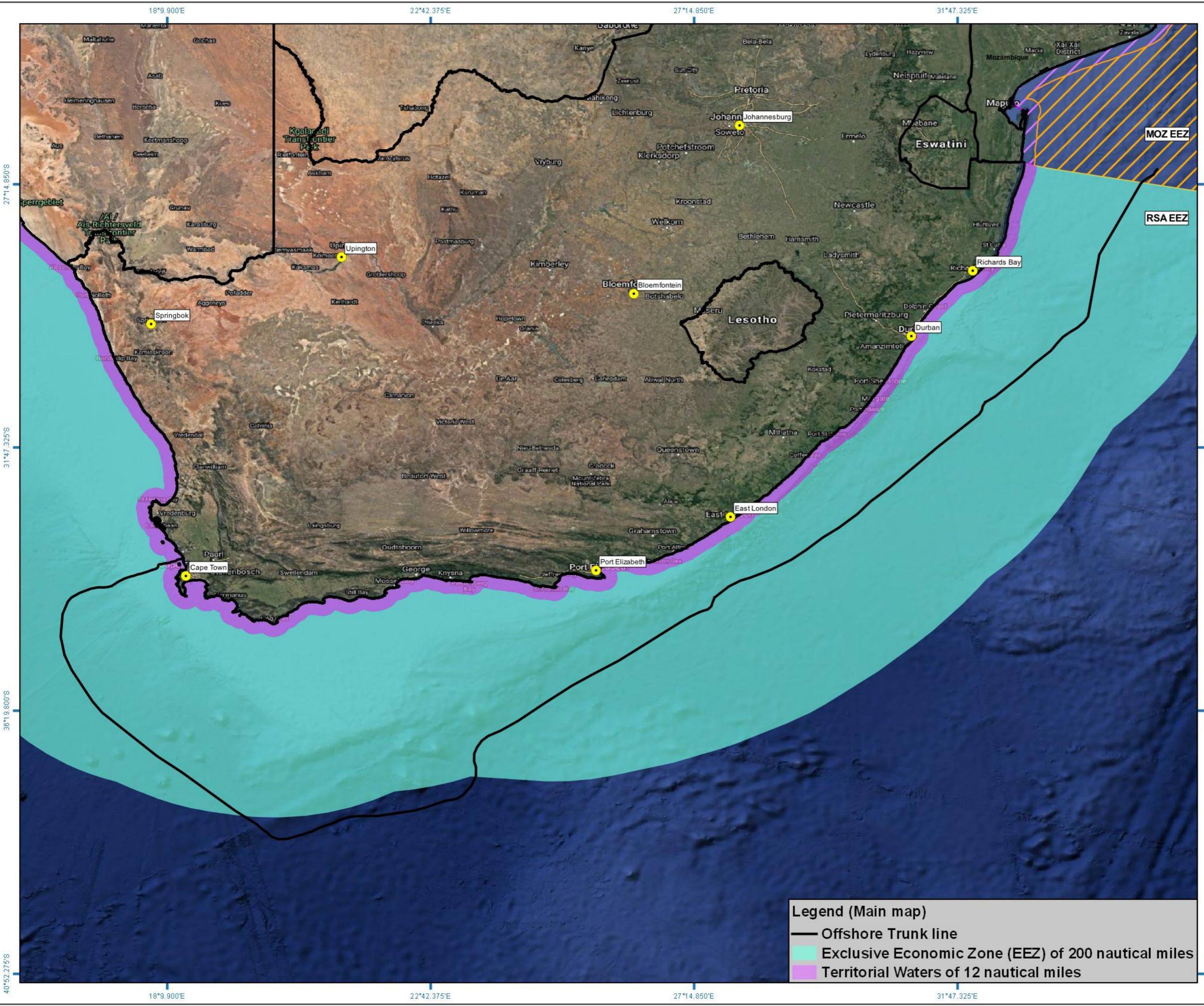


Co-Ordinate system
Projection: Unprojected (Geographic)
Ellipsoid: WGS84
Units: Decimal Degrees
Main map grid coordinates
Degrees and Decimal Minutes
Distance notes
1 nautical mile = 1.852km
1km = 0.539957km

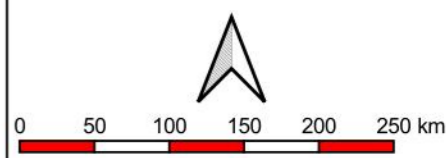
2AFRICA Landing

Duynfontein

Locality Map



2AFRICA Landing
Duynefontein
Locality Map with offshore alignment and trunk line to Mozambique



1:4250000
 when printed at A3 (297 x 420 mm)

Co-Ordinate system
 Projection: Unprojected (Geographic)
 Ellipsoid: WGS84
 Units: Decimal Degrees
 Main map grid coordinates
 Degrees and Decimal Minutes

Distance notes
 1 nautical mile = 1.852km
 1km = 0.539957km

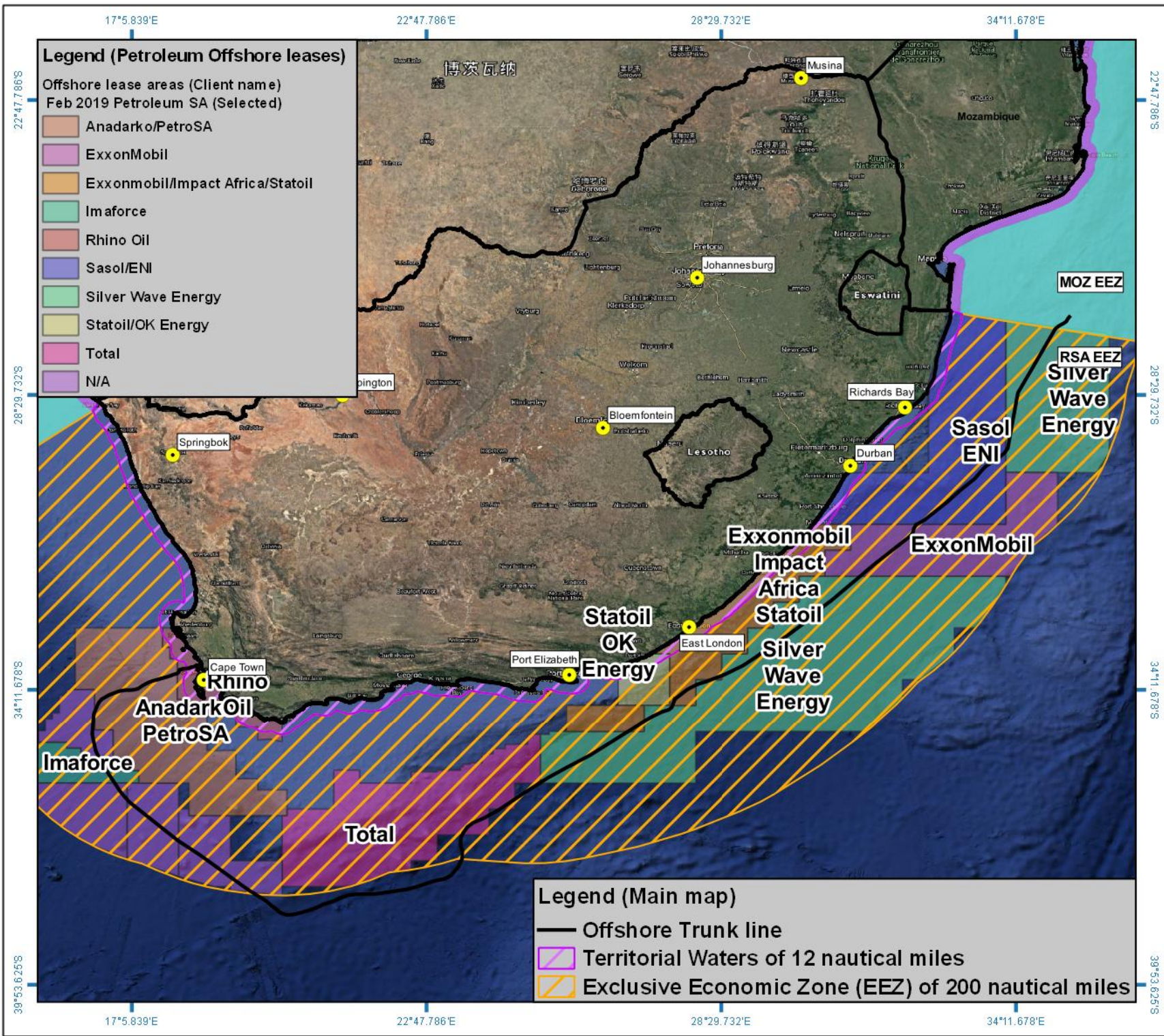


For Giles Churchill



Date of print: 26 Oct 2020

- Legend (Main map)**
- Offshore Trunk line
 - Exclusive Economic Zone (EEZ) of 200 nautical miles
 - Territorial Waters of 12 nautical miles



2AFRICA Landing

Duynfontein

Locality Map with offshore alignment and trunk line to Mozambique

0 50 100 150 200 250 km

1:7250000
 when printed at A4 (210 x 297 mm)

Co-Ordinate system
 Projection: Unprojected (Geographic)
 Ellipsoid: WGS84
 Units: Decimal Degrees

Main map grid coordinates
 Degrees and Decimal Minutes

Distance notes
 1 nautical mile = 1.852km
 1km = 0.539957nm

Mapping and lay out by

For Giles Churchill

acer
 AFRICA

Date of print: 26 Oct 2020

18°2'44"E 18°9'54"E 18°17'5"E 18°24'15"E 18°31'25"E

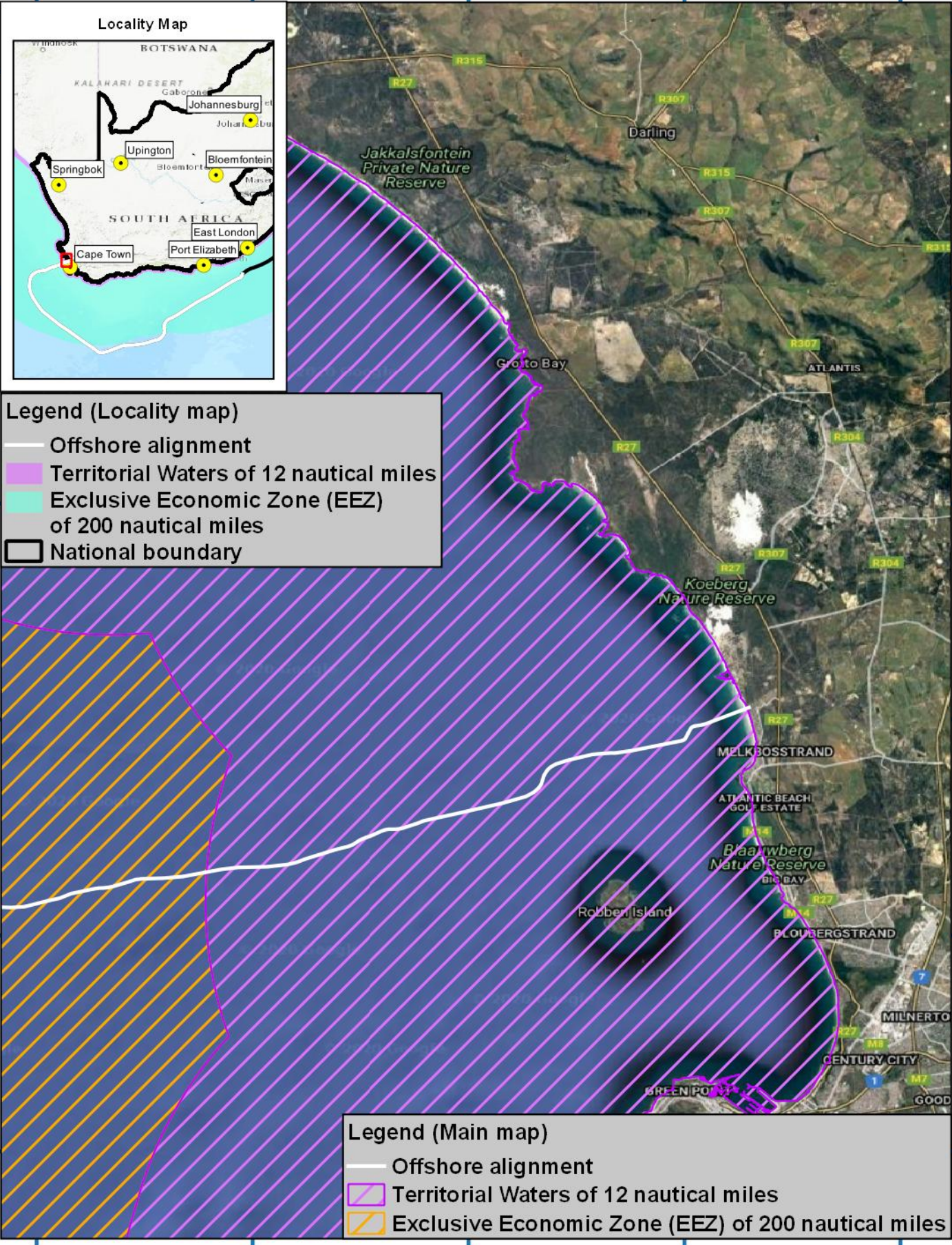
33°20'33"S
33°27'43"S
33°34'53"S
33°42'4"S
33°49'14"S
33°56'24"S

33°20'33"S
33°27'43"S
33°34'53"S
33°42'4"S
33°49'14"S
33°56'24"S



Legend (Locality map)

- Offshore alignment
- Territorial Waters of 12 nautical miles
- Exclusive Economic Zone (EEZ) of 200 nautical miles
- National boundary



Legend (Main map)

- Offshore alignment
- Territorial Waters of 12 nautical miles
- Exclusive Economic Zone (EEZ) of 200 nautical miles

18°2'44"E 18°9'54"E 18°17'5"E 18°24'15"E 18°31'25"E

Mapping and layout by **S3 Technologies** Spatial Systems Solutions

For Giles Churchill **acer AFRICA**

0 2 4 6 8 10 km

1:200000

when printed at A4 (297 x 210 mm)

Date of print: 26 Oct 2020

Co-Ordinate system
Projection: Unprojected
(Geographic)
Ellipsoid: WGS84
Units: Decimal Degrees

2AFRICA Landing

Duynfontein

Offshore alignment up to
RSA territorial waters
12 nautical miles offshore

Distance notes
1 nautical mile = 1.852km
1km = 0.539957km

17°57'54"E 18°4'38"E 18°11'22"E 18°18'6"E 18°24'51"E



Legend (Main map)

- Offshore alignment
- Territorial Waters of 12 nautical miles
- Exclusive Economic Zone (EEZ) of 200 nautical miles
- BSP Marine Protected Areas (SANBI: 2017)
- Marine Protected Areas (Gazetted - 03 Feb 2016)
- Marine Protected Areas (SANBI: 2011)
- Focus areas for Offshore Protection

Legend (Locality map)

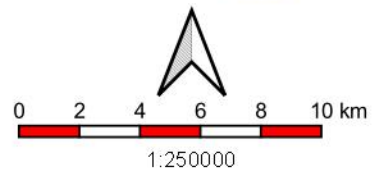
- Offshore alignment
- Territorial Waters of 12 nautical miles
- Exclusive Economic Zone (EEZ) of 200 nautical miles
- National boundary



17°57'54"E 18°4'38"E 18°11'22"E 18°18'6"E 18°24'51"E

Mapping and layout by **S3 Technologies** Spatial Systems Solutions

For Giles Churchill
acer AFRICA



Co-Ordinate system
Projection: Transverse Mercator
Datum: Hartebeeshoek 1994
Ellipsoid: WGS84
Meridian: Lo19°
Units: Metres

2AFRICA Landing

Duynfontein

**Offshore alignment
RSA territorial waters
focusing on Robben Island MPA**

Distance notes
1 nautical mile = 1.852km
1km = 0.539957nmi

33°34'19"S
33°41'3"S
33°47'48"S
33°54'32"S
33°34'19"S
33°41'3"S
33°47'48"S
33°54'32"S

18°26.145'E 18°26.374'E 18°26.603'E 18°26.832'E 18°27.061'E

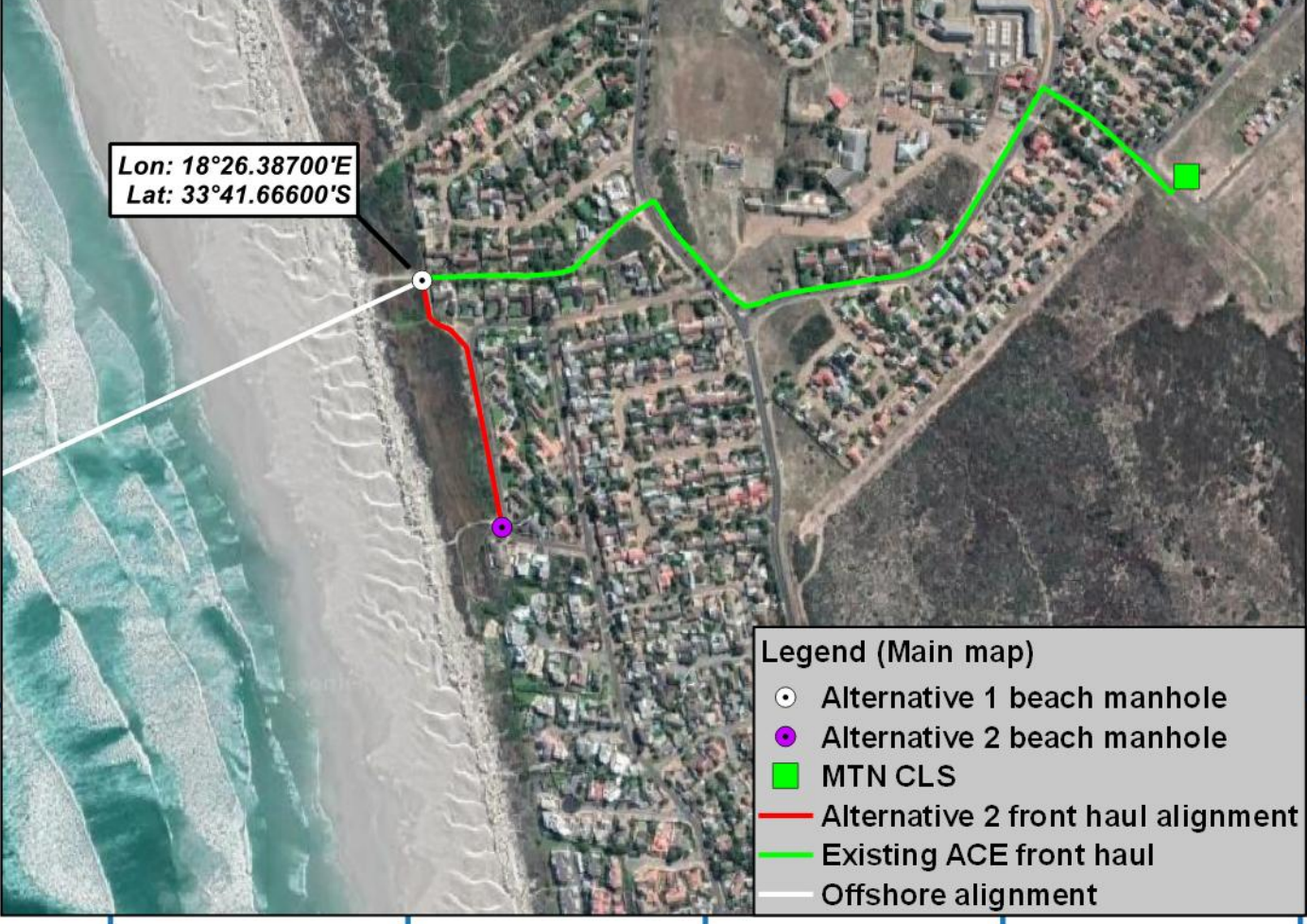
33°41.022'S
33°41.251'S
33°41.480'S
33°41.709'S
33°41.938'S

33°41.022'S
33°41.251'S
33°41.480'S
33°41.709'S
33°41.938'S



Legend (Locality map)

- Offshore alignment
- Territorial Waters of 12 nautical miles
- Exclusive Economic Zone (EEZ) of 200 nautical miles
- National boundary



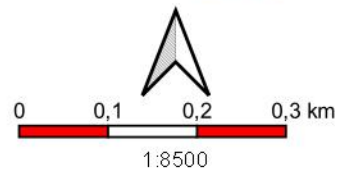
Legend (Main map)

- Alternative 1 beach manhole
- Alternative 2 beach manhole
- MTN CLS
- Alternative 2 front haul alignment
- Existing ACE front haul
- Offshore alignment

18°26.145'E 18°26.374'E 18°26.603'E 18°26.832'E 18°27.061'E

Mapping and layout by **S3 Technologies** Spatial Systems Solutions

For Giles Churchill **acer AFRICA**



Co-Ordinate system
Projection: Transverse Mercator
Datum: Harthebeeshoek 1994
Ellipsoid: WGS84
Meridian: Lo19°
Units: Metres

Main map grid coordinates
Degrees and Decimal Minutes

Distance notes
1 nautical mile = 1.852km
1km = 0.539957km

2AFRICA Landing

Duynfontein

Onshore alignment with alternatives, landing point and other points of interest

when printed at A4 (297 x 210 mm)
Date of print: 26 Oct 2020

18°26.374'E 18°26.603'E 18°26.832'E 18°27.061'E

33°40.793'S

33°41.022'S

33°41.251'S

33°41.480'S

33°41.709'S

33°40.793'S

33°41.022'S

33°41.251'S

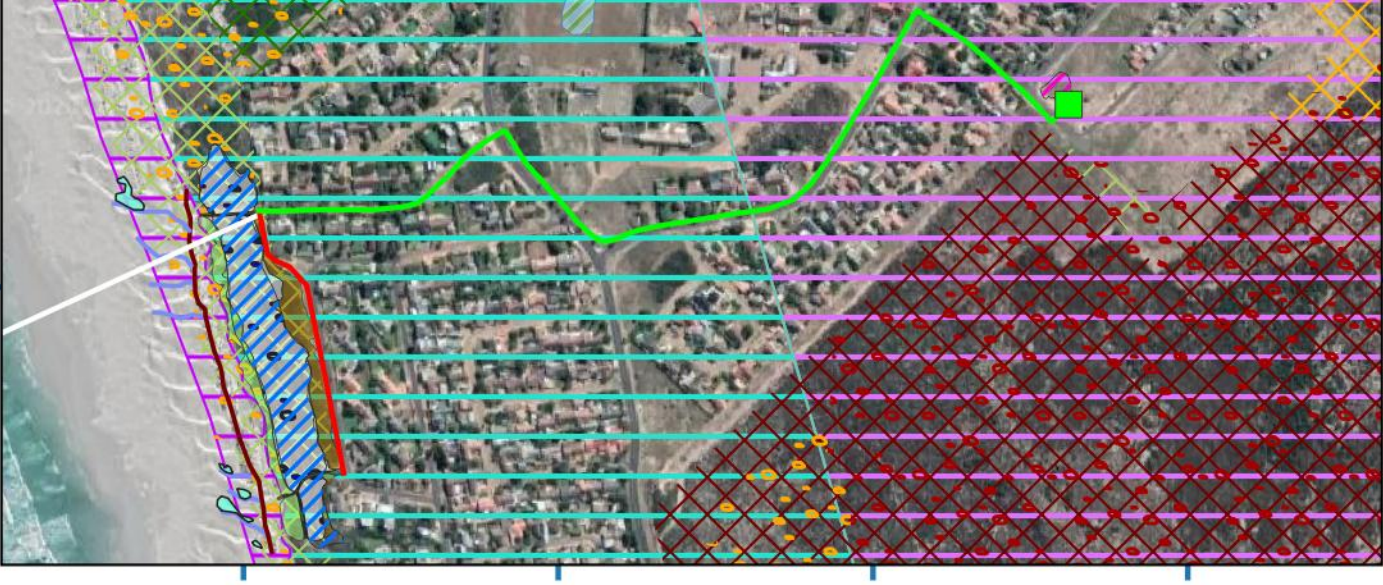
33°41.480'S

33°41.709'S

- Legend (Main map)**
- MTN CLS
 - Alternative 2 front haul alignment
 - Existing ACE front haul
 - Offshore alignment
- Key morphological features**
- Longitudinal dune crest
 - Transverse dune crest
 - Moist frontal dune slack
- SANBI Vegmap (2018 Beta)**
- Atlantis Sand Fynbos
 - Cape Flats Dune Strandveld
 - Cape Seashore Vegetation
- Critical Biodiversity Area category (CTT 2017):**
- ⊗ Protected: In Perpetuity
 - ⊗ CBA 1b
 - ⊗ CBA 1e
 - ⊗ Other Natural Areas
- Threatened ecosystems remaining (SANBI 2011)**
- Critically Endangered
 - Endangered
- Wetlands (Specialist assessment)**
- ▨ Artificial wetland
 - ▨ Dune slack wetland
- Disturbance units (Specialist assessment)**
- Disturbed vegetation (Alien vegetation)
 - Natural Vegetation
 - Stormwater Facility (Reed dominated)
 - Road



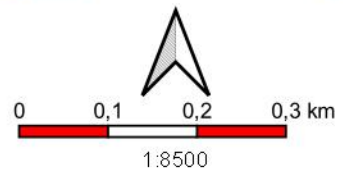
- Legend (Locality map)**
- Offshore alignment
 - Territorial Waters of 12 nautical miles
 - Exclusive Economic Zone (EEZ) of 200 nautical miles
 - National boundary



18°26.374'E 18°26.603'E 18°26.832'E 18°27.061'E

Mapping and layout by

For Giles Churchill



when printed at A4 (297 x 210 mm)
Date of print: 26 Oct 2020

Co-Ordinate system
Projection: Transverse Mercator
Datum: Harthebeeshoek 1994
Ellipsoid: WGS84
Meridian: Lo19°
Units: Metres

Main map grid coordinates
Degrees and Decimal Minutes

Distance notes
1 nautical mile = 1.852km
1km = 0.539957km

2AFRICA Landing

Duynfontein

Onshore alignment with alternatives, Sensitivity and Specialist assessments