

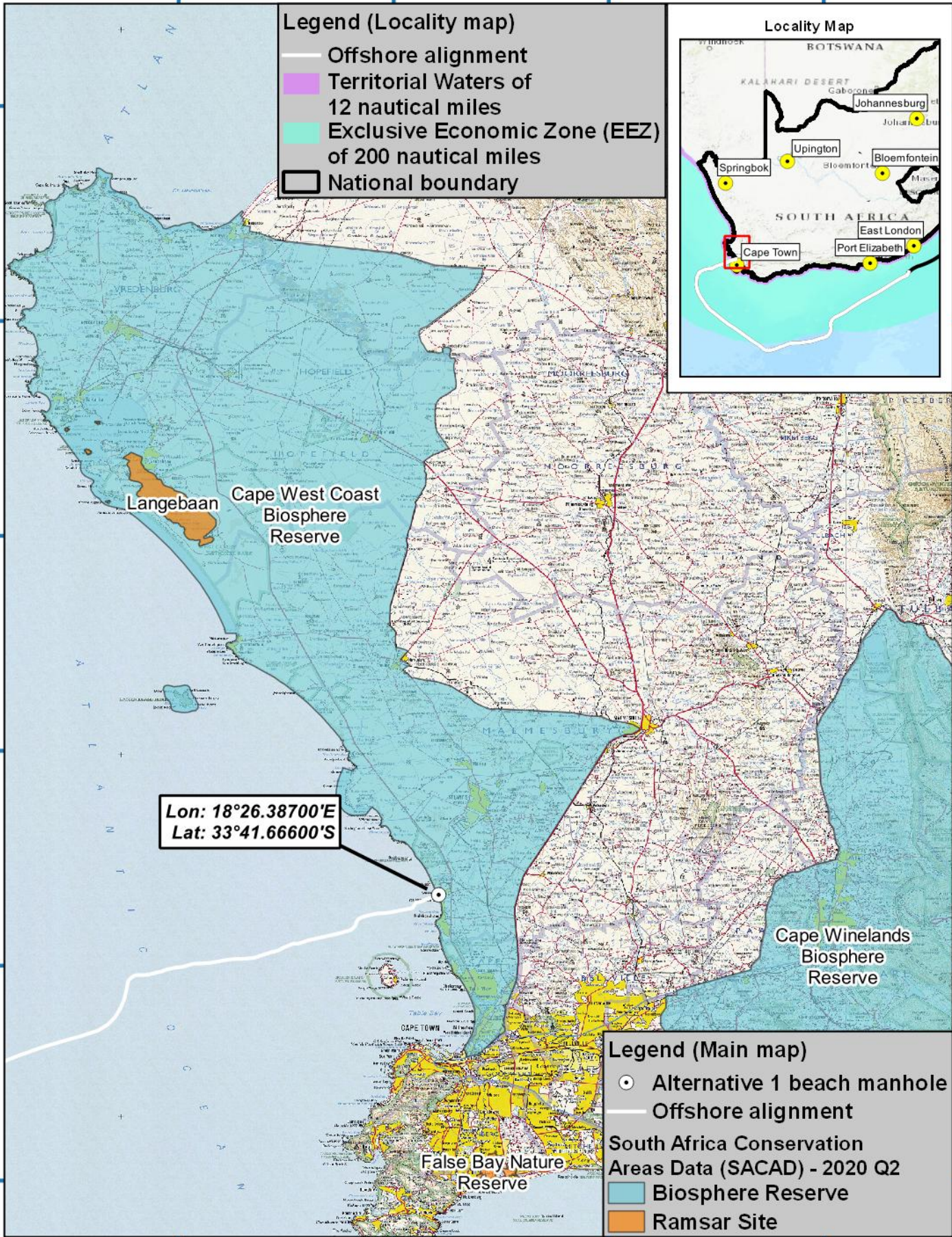
18°4'54"E 18°22'41"E 18°40'28"E 18°58'15"E

32°36'22"S
32°54'9"S
33°11'56"S
33°29'43"S
33°47'30"S
34°5'18"S

32°36'22"S
32°54'9"S
33°11'56"S
33°29'43"S
33°47'30"S
34°5'18"S

Legend (Locality map)

- Offshore alignment
- Territorial Waters of 12 nautical miles
- Exclusive Economic Zone (EEZ) of 200 nautical miles
- National boundary



Legend (Main map)

- Alternative 1 beach manhole
- Offshore alignment

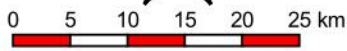
South Africa Conservation Areas Data (SACAD) - 2020 Q2

- Biosphere Reserve
- Ramsar Site

18°4'54"E 18°22'41"E 18°40'28"E 18°58'15"E

Mapping and layout by

For Giles Churchill



1:500000

when printed at A4 (297 x 210 mm)

Date of print: 06 Nov 2020

Co-Ordinate system
Projection: Transverse Mercator
Datum: Harthebeeshoek 1994
Ellipsoid: WGS84
Meridian: Lo19°
Units: Metres

Main map grid coordinates
Degrees and Decimal Minutes

Distance notes

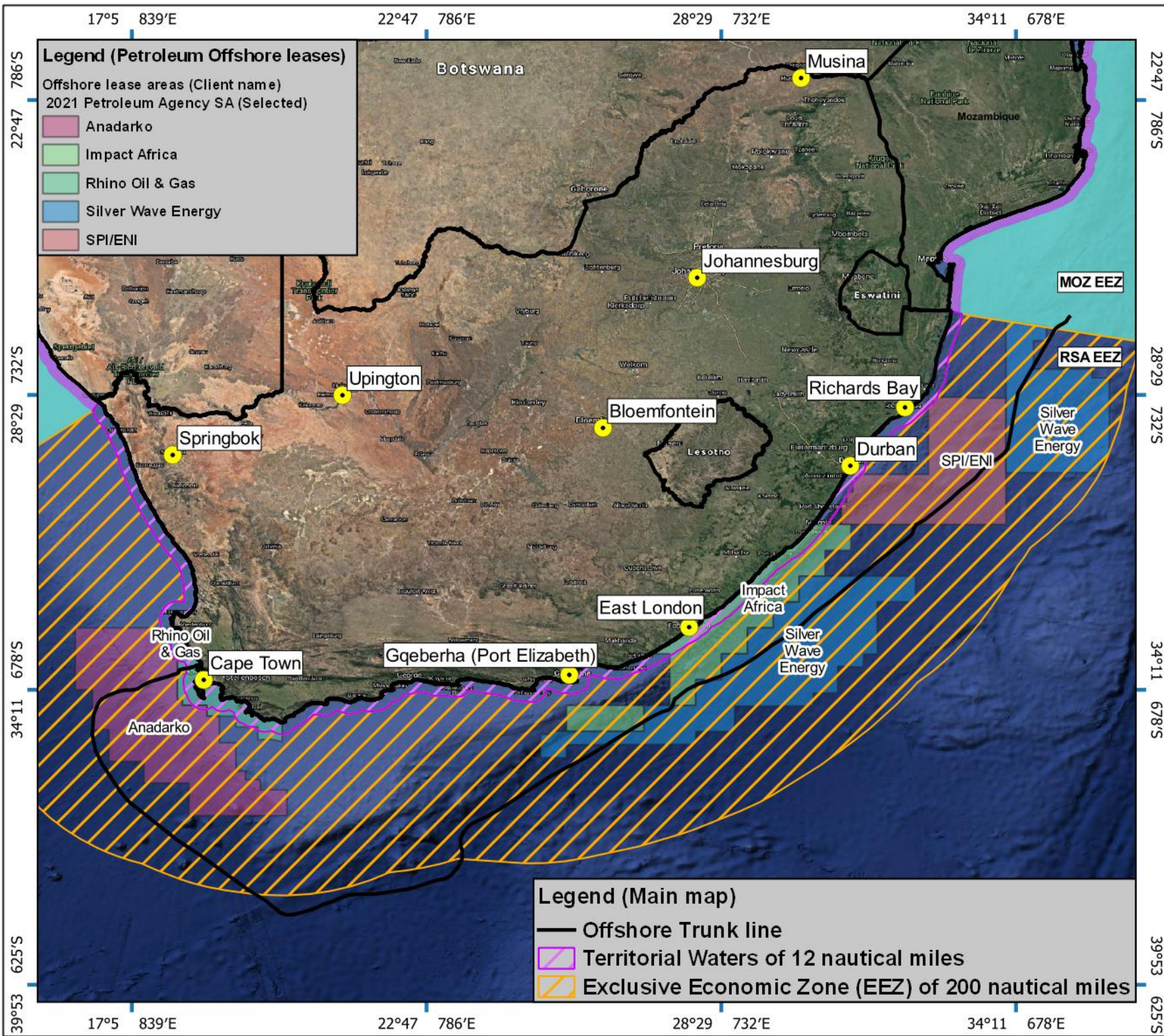
1 nautical mile = 1.852km

1km = 0.539957km

2AFRICA Landing

Duynfontein

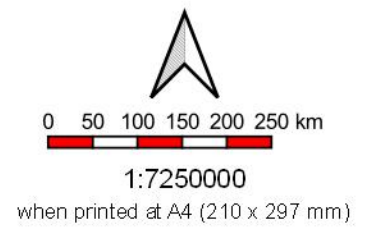
Offshore alignment
with South Africa Conservation
Areas Data (SACAD) - 2020 Q2



2AFRICA Landing

Duynfontein

Locality Map with offshore alignment and trunk line to Mozambique with Offshore Lease Areas



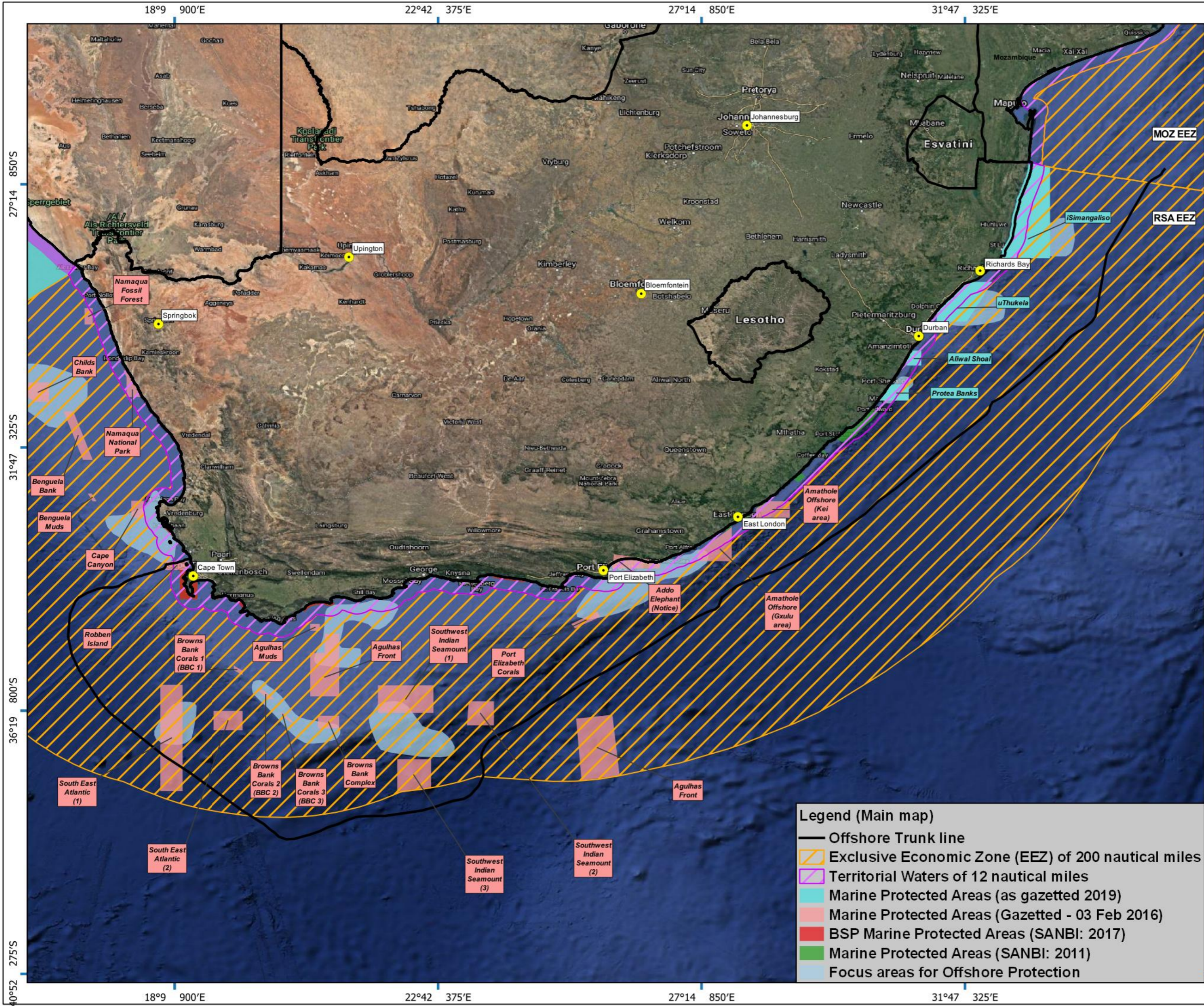
Co-Ordinate system
 Projection: Unprojected (Geographic)
 Ellipsoid: WGS84
 Units: Decimal Degrees

Main map grid coordinates
 Degrees and Decimal Minutes

Distance notes
 1 nautical mile = 1.852km
 1km = 0.539957km

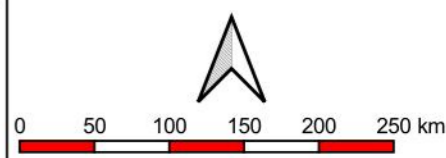
Mapping and lay out by

For Giles Churchill



2AFRICA Landing
Duynefontein
Locality Map with trunk line to Mozambique and Marine Protected Areas

27°14' 850'S
 31°47' 325'S
 36°19' 800'S
 40°52' 275'S



1:4250000
 when printed at A3 (297 x 420 mm)

Co-Ordinate system
 Projection: Unprojected (Geographic)
 Ellipsoid: WGS84
 Units: Decimal Degrees
 Main map grid coordinates
 Degrees and Decimal Minutes

Distance notes
 1 nautical mile = 1.852km
 1km = 0.539957km



For Giles Churchill



Date of print: 09 Nov 2020

- Legend (Main map)**
- Offshore Trunk line
 - ▨ Exclusive Economic Zone (EEZ) of 200 nautical miles
 - ▨ Territorial Waters of 12 nautical miles
 - ▨ Marine Protected Areas (as gazetted 2019)
 - ▨ Marine Protected Areas (Gazetted - 03 Feb 2016)
 - ▨ BSP Marine Protected Areas (SANBI: 2017)
 - ▨ Marine Protected Areas (SANBI: 2011)
 - ▨ Focus areas for Offshore Protection

18°9' 900'E
 27°14' 850'S
 31°47' 325'S
 36°19' 800'S
 40°52' 275'S

22°42' 375'E
 27°14' 850'E
 31°47' 325'E

27°14' 850'E
 31°47' 325'E
 36°19' 800'S
 40°52' 275'S

18°4'39"E

18°11'23"E

18°18'7"E

18°24'51"E

33°27'36"S

33°34'20"S

33°41'5"S

33°47'49"S

33°54'33"S

33°27'36"S

33°34'20"S

33°41'5"S

33°47'49"S

33°54'33"S

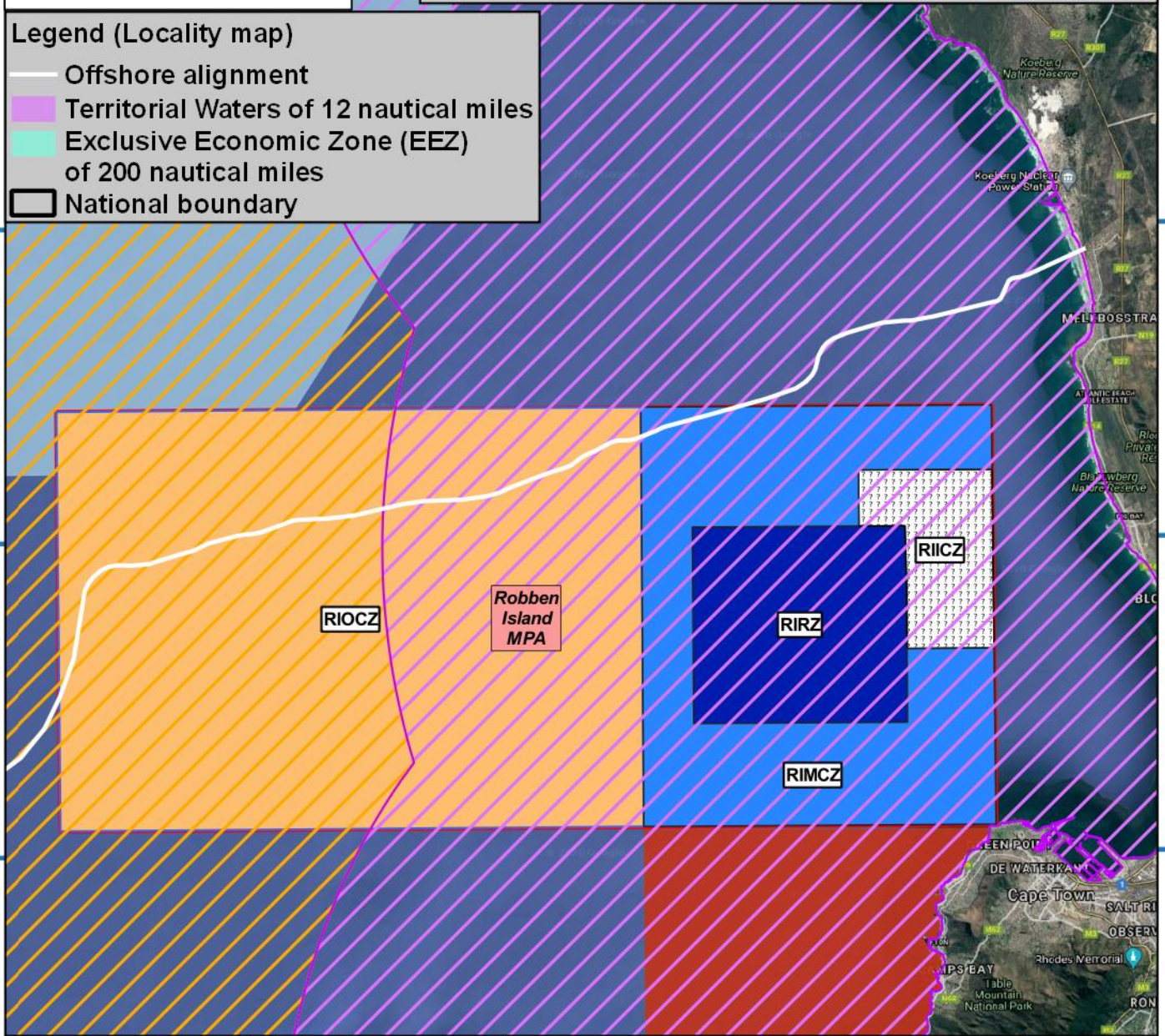


Legend (Main map)

- Offshore alignment
- ▨ Territorial Waters of 12 nautical miles
- ▨ Exclusive Economic Zone (EEZ) of 200 nautical miles
- Robben island MPA zones**
- ▨ Middle Control Zone (RIMCZ)
- ▨ Middle Inner Zone (RIICZ)
- ▨ Offshore Control Zone (RIOCZ)
- ▨ Restricted Zone (RIRZ)
- ▨ BSP Marine Protected Areas (SANBI: 2017)
- ▨ Marine Protected Areas (Gazetted - 03 Feb 2016)
- ▨ Marine Protected Areas (SANBI: 2011)
- ▨ Focus areas for Offshore Protection

Legend (Locality map)

- Offshore alignment
- ▨ Territorial Waters of 12 nautical miles
- ▨ Exclusive Economic Zone (EEZ) of 200 nautical miles
- ▭ National boundary



18°4'39"E

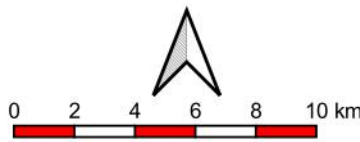
18°11'23"E

18°18'7"E

18°24'51"E

Mapping and layout by

For Giles Churchill



1:250000

when printed at A4 (297 x 210 mm)

Date of print: 09 Nov 2020

Co-Ordinate system
 Projection: Transverse Mercator
 Datum: Hartbeeshoek 1994
 Ellipsoid: WGS84
 Meridian: Lo19°
 Units: Metres

Distance notes

1 nautical mile = 1.852km

1km = 0.539957km

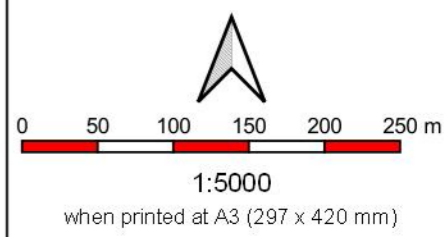
2AFRICA Landing

Duynfontein

Offshore alignment
 RSA territorial waters
 focusing on Robben Island MPA



2AFRICA Landing
Duynefortein
Onshore alignment with alternatives, Sensitivity and Specialist assessments



Co-Ordinate system
 Projection: Transverse Mercator
 Datum: Hartebeeshoek 1994
 Ellipsoid: WGS84
 Meridian: Lo19°
 Units: Metres

Main map grid coordinates
 Degrees and Decimal Minutes

Distance notes
 1 nautical mile = 1.852km
 1km = 0.539957km



For Giles Churchill



Date of print: 10 Feb 2021

- | | | |
|--|---|--------------------------|
| Legend (Main map) | | |
| MTN CLS | Longitudinal dune crest | Wetlands |
| Offshore alignment | Transverse dune crest | Protected: In Perpetuity |
| Alternative 2 front haul alignment | Moist frontal dune slack | CBA 1b |
| Existing ACE front haul | Artificial wetland | CBA 1e |
| SANBI Vegmap (2018 Beta) | Dune slack wetland | Other Natural Areas |
| Atlantis Sand Fynbos | Disturbed vegetation (Alien vegetation) | |
| Cape Flats Dune Strandveld | Natural Vegetation | |
| Cape Seashore Vegetation | Stormwater Facility (Reed dominated) | |
| Threatened ecosystems remaining (SANBI 2011) | Road | |
| Critically Endangered | | |
| Endangered | | |

18°26 374'E 18°26 603'E 18°26 832'E 18°27 061'E

33°40 793'S
33°41 022'S
33°41 251'S
33°41 480'S
33°41 709'S

33°40 793'S
33°41 022'S
33°41 251'S
33°41 480'S
33°41 709'S



FARM 1552

Legend (Main map)

- Alternative 1 beach manhole
- Alternative 2 beach manhole
- MTN CLS
- Alternative 2 front haul alignment
- Existing ACE front haul
- Offshore alignment
- ▭ Affected cadastral

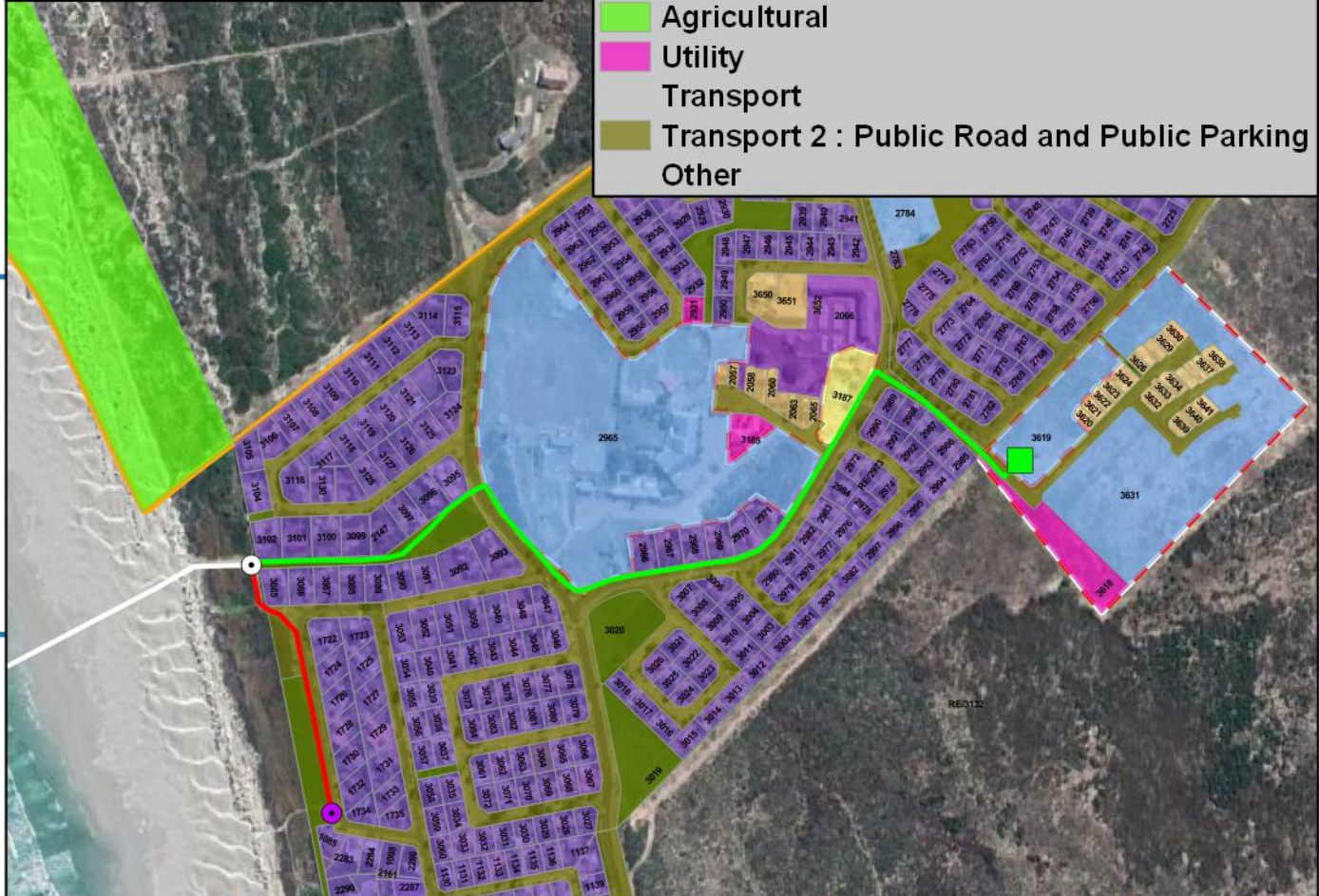
City of Cape Town cadastral zonations (2017)

Community

- Community 1 : Local
- Open Space 2 : Public Open Space
- Business/Industry
- General Business 1
- Local Business 2 : Local Business
- Residential/Rural
- General Residential 1 : Group Housing
- General Residential 2
- Single Residential 1 : Conventional Housing
- General
- Agricultural
- Utility
- Transport
- Transport 2 : Public Road and Public Parking
- Other

Legend (Locality map)

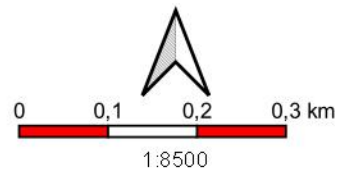
- Offshore alignment
- Territorial Waters of 12 nautical miles
- Exclusive Economic Zone (EEZ) of 200 nautical miles
- ▭ National boundary



18°26 374'E 18°26 603'E 18°26 832'E 18°27 061'E

Mapping and layout by
S3 Technologies
Spatial Systems Solutions
Pty Ltd

For Giles Churchill
acer
AFRICA



when printed at A4 (297 x 210 mm)
Date of print: 10 Feb 2021

Co-Ordinate system
Projection: Transverse Mercator
Datum: Harthebeeshoek 1994
Ellipsoid: WGS84
Meridian: Lo19°
Units: Metres

Main map grid coordinates
Degrees and Decimal Minutes

Distance notes
1 nautical mile = 1.852km
1km = 0.539957nm

2AFRICA Landing

Duynfontein

Onshore alignment with alternatives, landing point and cadastral with zonations

18°20 179'E 18°21 976'E 18°23 774'E 18°25 572'E 18°27 370'E 18°29 167'E

33°35 197'S
33°36 994'S
33°38 792'S
33°40 590'S
33°42 387'S
33°44 185'S
33°45 983'S
33°47 781'S
33°49 578'S

33°35 197'S
33°36 994'S
33°38 792'S
33°40 590'S
33°42 387'S
33°44 185'S
33°45 983'S
33°47 781'S
33°49 578'S

Legend (Main map)

- Alternative 1 beach manhole
- Alternative 2 beach manhole
- MTN CLS
- Alternative 2 front haul alignment
- Existing ACE front haul
- Offshore alignment
- Landing site and onshore alignment buffer (500m)
- River lines (NGI)
- ▨ Wetlands (CTT 2017)

Critical Biodiversity Area category (CTT 2017):

- Protected: In Perpetuity
- Protected: Not In Perpetuity
- Conservation Area
- CBA 1a
- CBA 1b
- CBA 1c
- CBA 1d
- CBA 1e
- CBA 2
- ESA
- OESA
- Other Natural Areas

Critical Biodiversity Area Category	Definition
Conservation Area	Protected Area that is not yet proclaimed
CBA 1b	Irreplaceable High and Medium Condition site
CBA 1d	Irreplaceable Consolidation site
CBA 1e	Connectivity site
ESA	
CESA	Transformed site of conservation significance
Other Natural Vegetation/Areas	Unselected Natural Vegetation: high/med/restorable condition

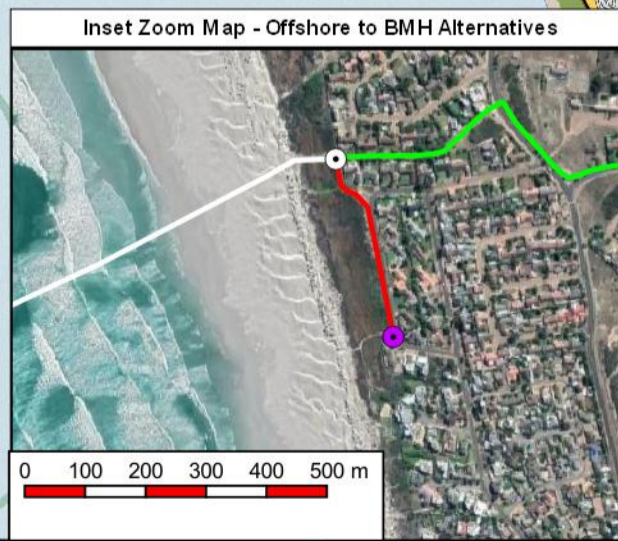
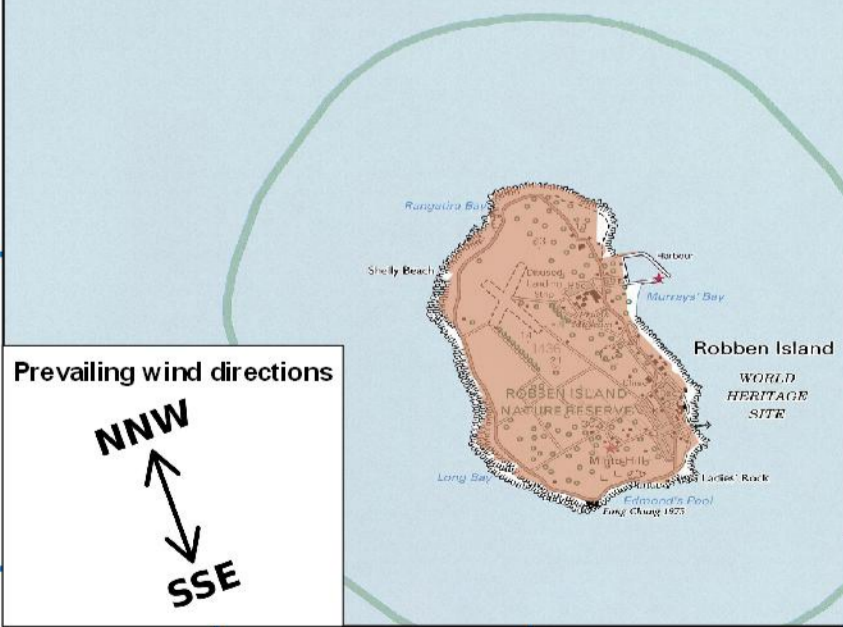
Locality Map



Legend (Locality map)

- Offshore alignment
- Offshore Trunk line
- Territorial Waters of 12 nautical miles
- Exclusive Economic Zone (EEZ) of 200 nautical miles
- National boundary

Lon: 18°26.38700'E
Lat: 33°41.66600'S



0 0,5 1 1,5 2 2,5 km
1:50000
when printed at A3 (420 x 297 mm)
Date of print: 17 Feb 2021

Co-Ordinate system
Projection: Unprojected (Geographic)
Ellipsoid: WGS84
Units: Decimal Degrees
Main map grid coordinates
Degrees and Decimal Minutes
Distance notes
1 nautical mile = 1.852km
1km = 0.539957km

2AFRICA Landing
Duynfontein
Locality Map

17°24'10"E

17°57'51"E

18°31'32"E

19°5'13"E

35°22'1"S
35°55'42"S

35°22'1"S
35°55'42"S

36°29'23"S

36°29'23"S

37°3'4"S

37°3'4"S

37°36'45"S

37°36'45"S

17°24'10"E

17°57'51"E

18°31'32"E

19°5'13"E

Locality Map

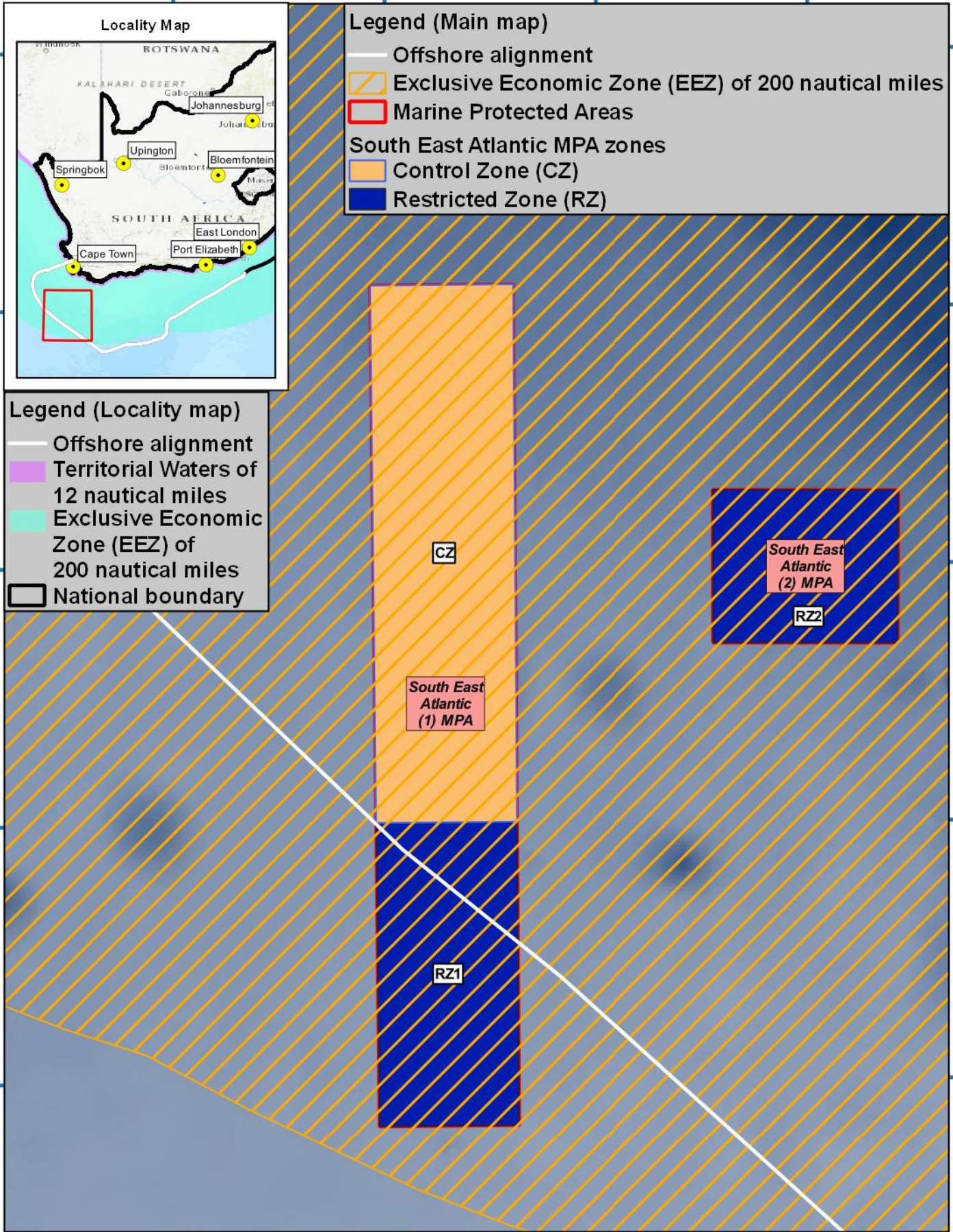


Legend (Locality map)

- Offshore alignment
- █ Territorial Waters of 12 nautical miles
- █ Exclusive Economic Zone (EEZ) of 200 nautical miles
- ▭ National boundary

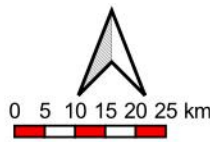
Legend (Main map)

- Offshore alignment
- █ Exclusive Economic Zone (EEZ) of 200 nautical miles
- ▭ Marine Protected Areas
- █ South East Atlantic MPA zones
- █ Control Zone (CZ)
- █ Restricted Zone (RZ)



Mapping and layout by

For Giles Churchill



when printed at A4 (297 x 210 mm)
Date of print: 17 Mar 2021

Co-Ordinate system
Projection: Transverse Mercator
Datum: Hartebeeshoek 1994
Ellipsoid: WGS84
Meridian: Lo19°
Units: Metres

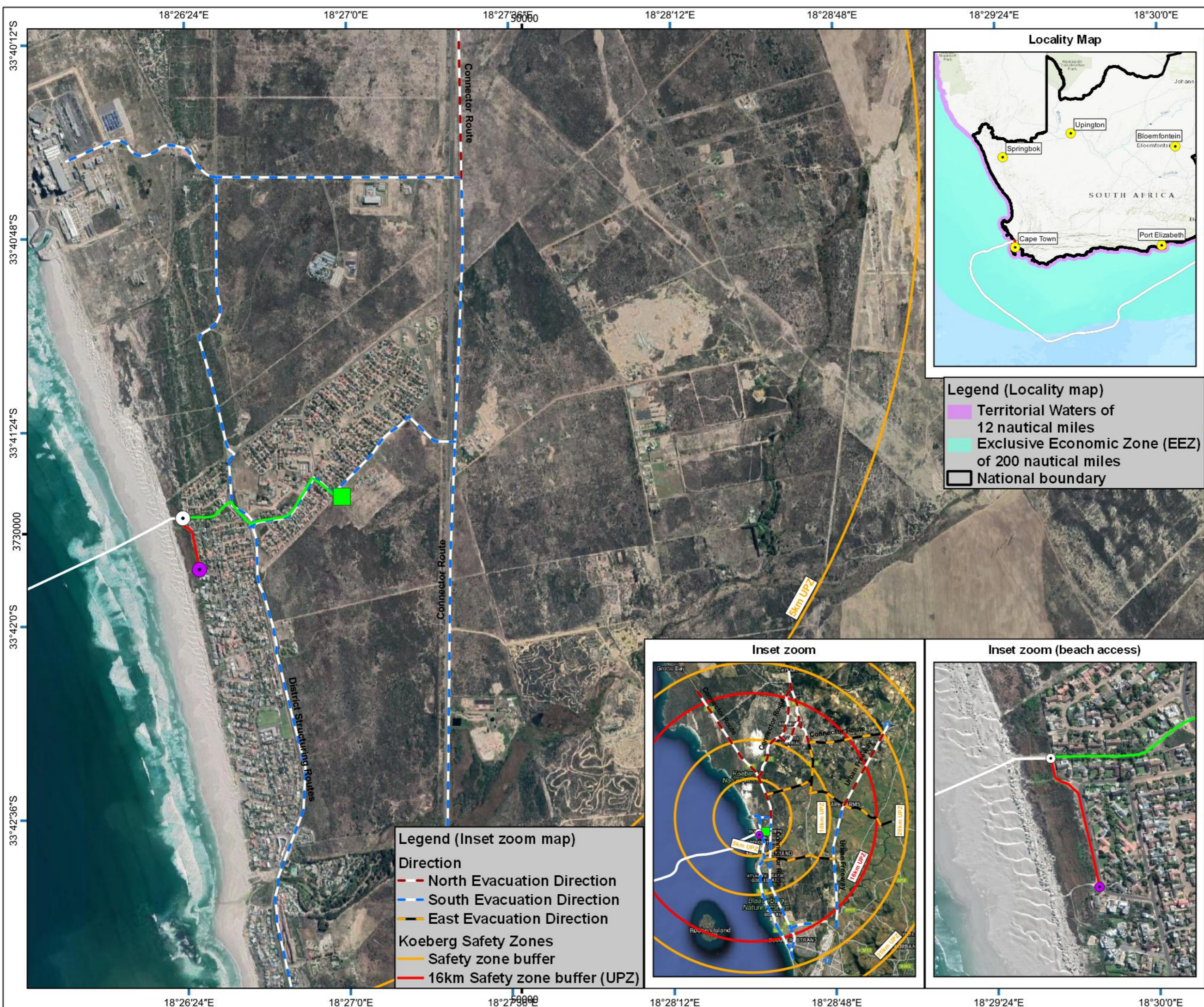
Distance notes

1 nautical mile = 1.852km
1km = 0.539957nmi

2AFRICA Landing

Duynfontein

Offshore alignment RSA
territorial waters focusing on the
South East Atlantic Seamount MPA



2AFRICA Landing

Onshore alignment with alternatives, landing point and other points of interest

Legend (Main map)

- Alternative 1 beach manhole
- Alternative 2 beach manhole
- MTN CLS
- Alternative 2 front haul alignment
- Existing ACE front haul
- Offshore alignment

Direction

- North Evacuation Direction
- South Evacuation Direction

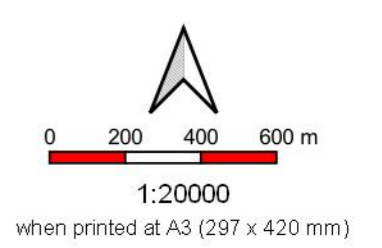
Koeberg Safety Zones

- Safety zone buffer

Locality Map

Legend (Locality map)

- Territorial Waters of 12 nautical miles
- Exclusive Economic Zone (EEZ) of 200 nautical miles
- National boundary



Projection: Transverse Mercator
 Datum: Hartbeeshoek 1994
 Ellipsoid: WGS84
 Central Meridian: 19°
 Scale Factor: 1
 Units: Metres

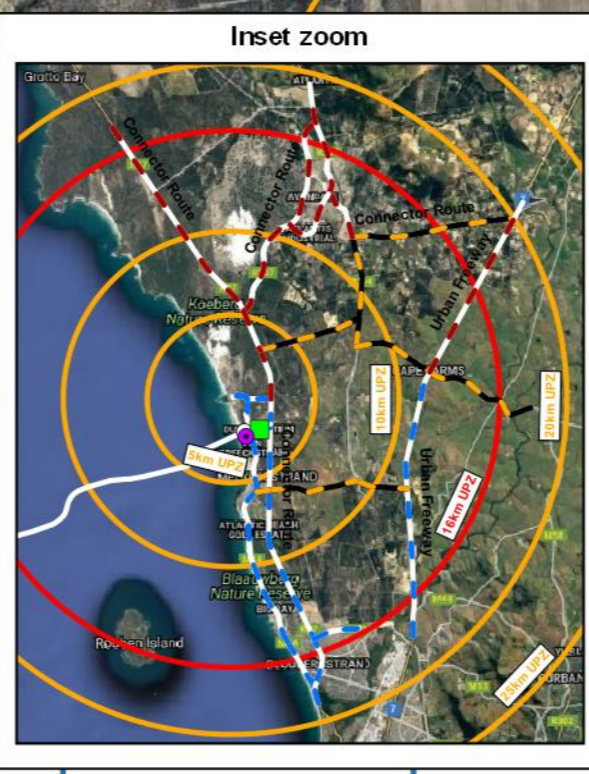
Legend (Inset zoom map)

Direction

- North Evacuation Direction
- South Evacuation Direction
- East Evacuation Direction

Koeberg Safety Zones

- Safety zone buffer
- 16km Safety zone buffer (UPZ)



18°26.145'E

18°26.374'E

18°26.603'E

18°26.832'E

18°27.061'E

33°41.022'S

33°41.251'S

33°41.480'S

33°41.709'S

33°41.938'S

33°41.022'S

33°41.251'S

33°41.480'S

33°41.709'S

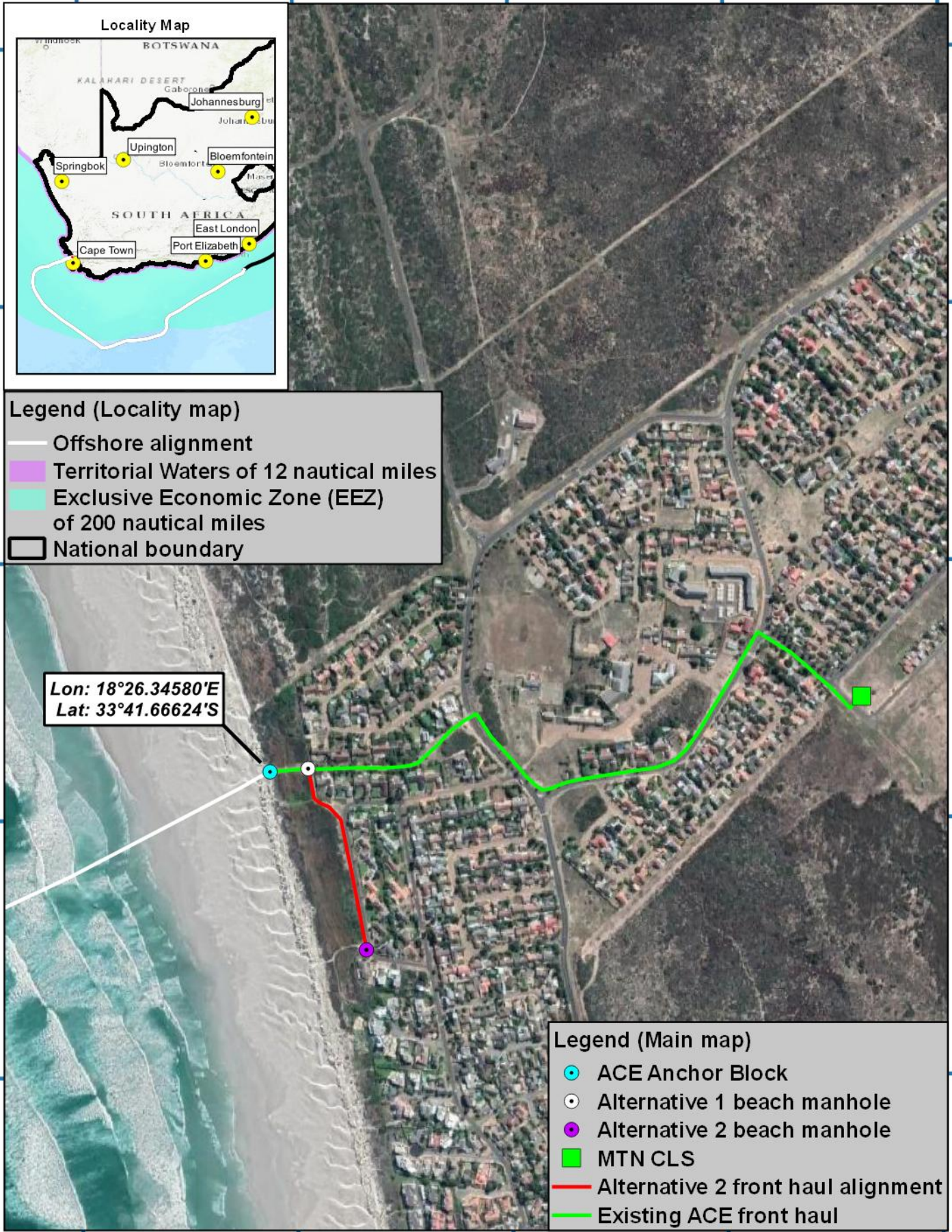
33°41.938'S



Legend (Locality map)

- Offshore alignment
- █ Territorial Waters of 12 nautical miles
- █ Exclusive Economic Zone (EEZ) of 200 nautical miles
- ▭ National boundary

Lon: 18°26.34580'E
 Lat: 33°41.66624'S



18°26.145'E

18°26.374'E

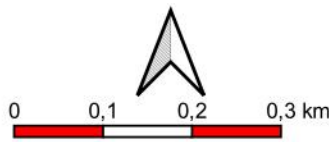
18°26.603'E

18°26.832'E

18°27.061'E

Mapping and layout by

For Giles Churchill



when printed at A4 (297 x 210 mm)

Date of print: 20 May 2021

Co-Ordinate system
 Projection: Transverse Mercator
 Datum: Harthebeeshoek 1994
 Ellipsoid: WGS84
 Meridian: Lo19°
 Units: Metres

Main map grid coordinates
Degrees and Decimal Minutes

Distance notes

1 nautical mile = 1.852km

1km = 0.539957km

2AFRICA Landing

Duynfontein

Onshore alignment
 with alternatives, landing point
 and other points of interest

18°26.171'E

18°26.238'E

18°26.306'E

18°26.373'E

33°41.546'S

33°41.546'S

33°41.613'S

33°41.613'S

33°41.681'S

33°41.681'S

33°41.748'S

33°41.748'S

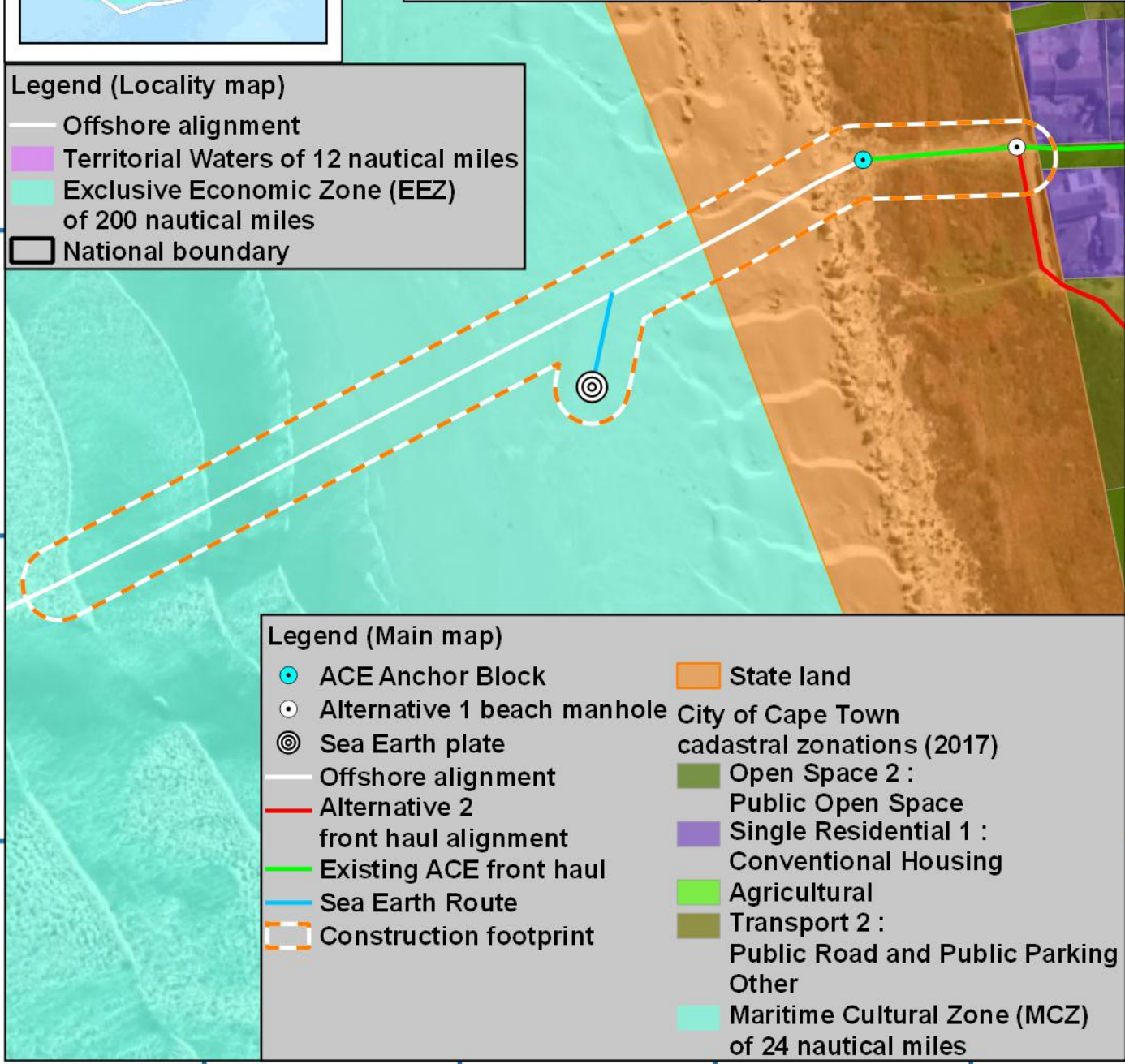
33°41.815'S

33°41.815'S



Legend (Locality map)

- Offshore alignment
- █ Territorial Waters of 12 nautical miles
- █ Exclusive Economic Zone (EEZ) of 200 nautical miles
- ▭ National boundary



Legend (Main map)

- ACE Anchor Block
- Alternative 1 beach manhole
- ⊙ Sea Earth plate
- Offshore alignment
- Alternative 2 front haul alignment
- Existing ACE front haul
- Sea Earth Route
- ▭ Construction footprint
- █ State land
- █ City of Cape Town cadastral zonations (2017)
- █ Open Space 2 : Public Open Space
- █ Single Residential 1 : Conventional Housing
- █ Agricultural
- █ Transport 2 : Public Road and Public Parking
- █ Other
- █ Maritime Cultural Zone (MCZ) of 24 nautical miles

18°26.171'E

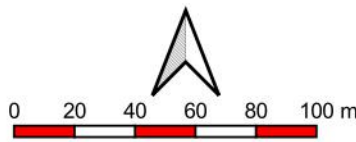
18°26.238'E

18°26.306'E

18°26.373'E

Mapping and layout by

For Giles Churchill



when printed at A4 (297 x 210 mm)

Date of print: 06 Jul 2021

Co-Ordinate system
Projection: Transverse Mercator
Datum: Harthebeeshoek 1994
Ellipsoid: WGS84
Meridian: Lo19°
Units: Metres

Main map grid coordinates
Degrees and Decimal Minutes

Distance notes

1 nautical mile = 1.852km

1km = 0.539957km

2AFRICA Landing

Duynfontein

Onshore alignment
with alternatives, landing point,
Sea plate information and
construction footprint

2 AFRICA GERA (EAST)

DUYNEFONTEIN

SEGMENT E01_01

**CHART SHOWING 2 AFRICA (EAST)
PROPOSED ROUTES FOR SYSTEM
CABLE APPROACH AND EARTH PLATE**

ACE SYSTEM
& EARTH CABLES



2 AFRICA PROPOSED
SYSTEM & EARTH
ROUTE



SEA EARTH PLATE



BMH POSITION 33° 41.666'S 18° 26.387'E

EARTH PLATE 33° 41.716'S 18° 26.274'E



This document may only be used for the purpose for which it was commissioned and in accordance with the terms of engagement for that commission.
Unauthorised use of this document in any form whatsoever is undertaken entirely at the user's risk

2 AFRICA (EAST) CABLE SYSTEM SEGMENT E01_01
DUYNEFONTEIN EARTH PLATE
CHART NO.01 OF 01

Contact Details:
Max Boyce – Cable Route Engineer, Alcatel Submarine Networks,
Christchurch way, Greenwich, SE10 0AG. UK.
max.boyce@asn.com

REV	DESCRIPTION	BY	CHKD	APPR
1	Issued for Review	MB	MB	JC
2	Adjusted for Topo Survey	MB	MB	JC



18°26.171'E

18°26.238'E

18°26.306'E

18°26.373'E

33°41.546'S

33°41.546'S

33°41.613'S

33°41.613'S

33°41.681'S

33°41.681'S

33°41.748'S

33°41.748'S

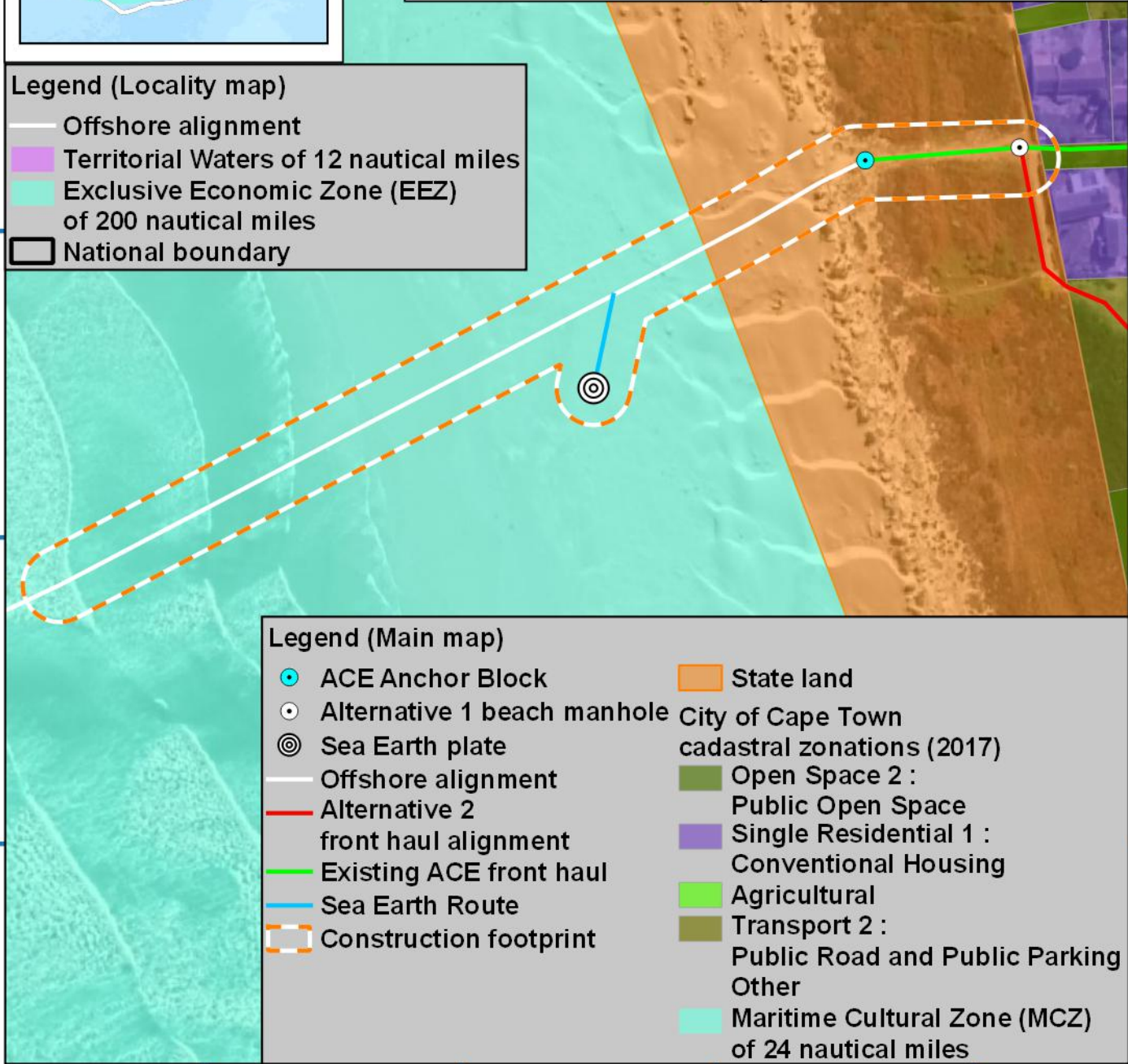
33°41.815'S

33°41.815'S



Legend (Locality map)

- Offshore alignment
- █ Territorial Waters of 12 nautical miles
- █ Exclusive Economic Zone (EEZ) of 200 nautical miles
- ▭ National boundary



Legend (Main map)

- ACE Anchor Block
- Alternative 1 beach manhole
- ⊙ Sea Earth plate
- Offshore alignment
- Alternative 2 front haul alignment
- Existing ACE front haul
- Sea Earth Route
- ▭ Construction footprint
- █ State land
- █ City of Cape Town cadastral zonations (2017)
- █ Open Space 2 : Public Open Space
- █ Single Residential 1 : Conventional Housing
- █ Agricultural
- █ Transport 2 : Public Road and Public Parking
- █ Other
- █ Maritime Cultural Zone (MCZ) of 24 nautical miles

18°26.171'E

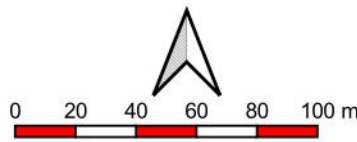
18°26.238'E

18°26.306'E

18°26.373'E

Mapping and layout by

For Giles Churchill



1:2500

when printed at A4 (297 x 210 mm)

Date of print: 06 Jul 2021

Co-Ordinate system
 Projection: Transverse Mercator
 Datum: Harthebeeshoek 1994
 Ellipsoid: WGS84
 Meridian: Lo19°
 Units: Metres

Main map grid coordinates Degrees and Decimal Minutes

Distance notes

1 nautical mile = 1.852km

1km = 0.539957km

2AFRICA Landing

Duynfontein

Onshore alignment
 with alternatives, landing point,
 Sea plate information and
 construction footprint