

14°0'0"E

16°0'0"E

18°0'0"E

28°0'0"S

28°0'0"S

30°0'0"S

30°0'0"S

32°0'0"S

32°0'0"S

34°0'0"S

34°0'0"S

Locality Map



Legend (Locality map)

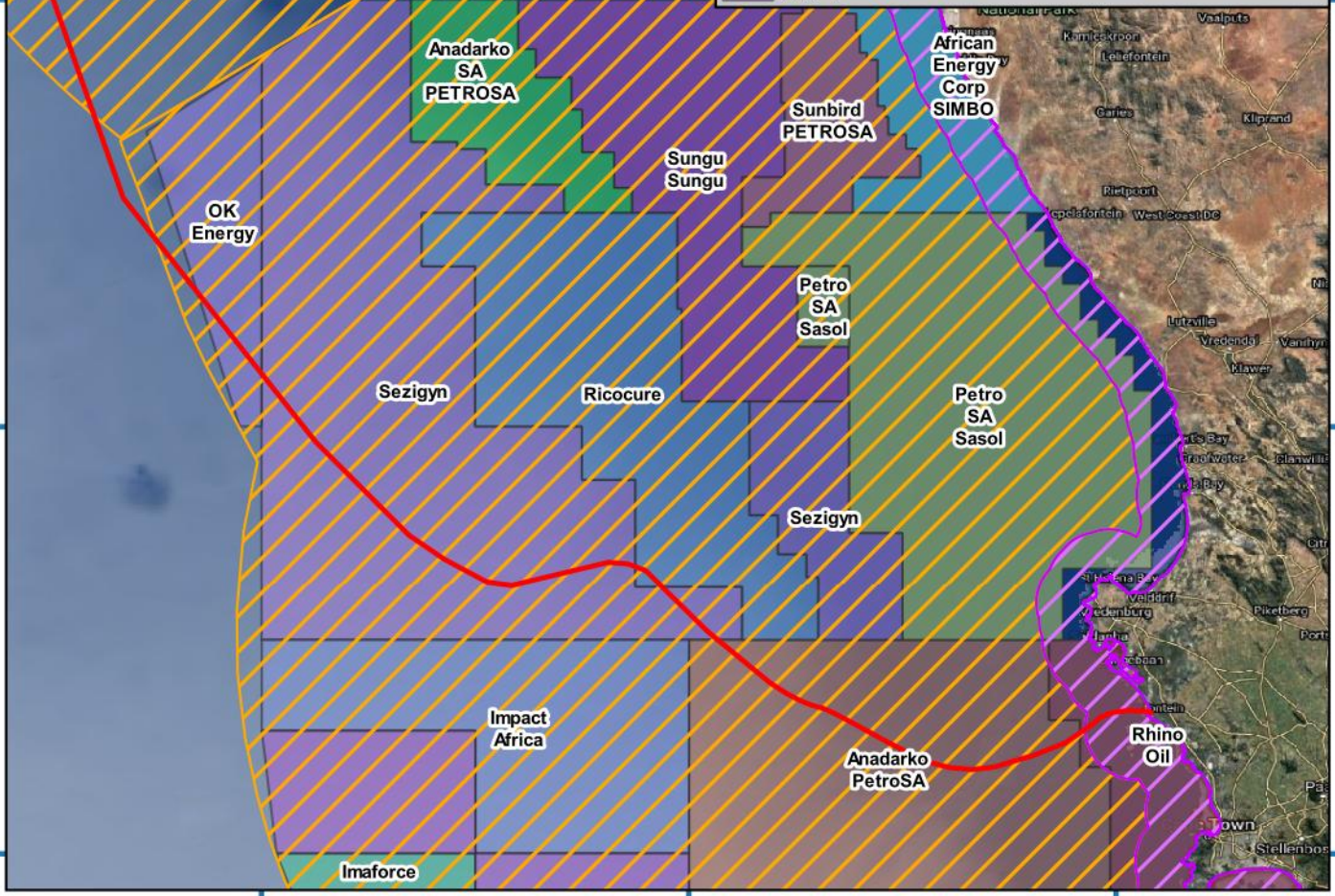
- Preferred offshore alignment
- Territorial Waters of 12 nautical miles
- Exclusive Economic Zone (EEZ) of 200 nautical miles
- National boundary

Legend (Main map)

- Preferred offshore alignment
- Territorial Waters of 12 nautical miles
- Exclusive Economic Zone (EEZ) of 200 nautical miles

Offshore lease areas (Client name)  
Feb 2019 Petroleum SA (Selected)

- African Energy Corp/SIMBO
- Anadarko SA/PETROSA
- Anadarko/PetroSA
- Imaforce
- Impact Africa
- OK Energy
- Petro SA/Sasol
- Rhino Oil
- Ricocure
- Sezign
- Sunbird/PETROSA
- Sungu Sungu
- Totasco/PetroSA
- N/A



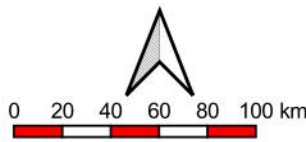
14°0'0"E

16°0'0"E

18°0'0"E

Mapping and layout by

For Giles Churchill



when printed at A4 (297 x 210 mm)

Date of print: 13 May 2021

Co-Ordinate system  
Projection: Unprojected  
(Geographic)  
Ellipsoid WGS84  
Units: Decimal Degrees

Distance notes

1 nautical mile = 1.852km

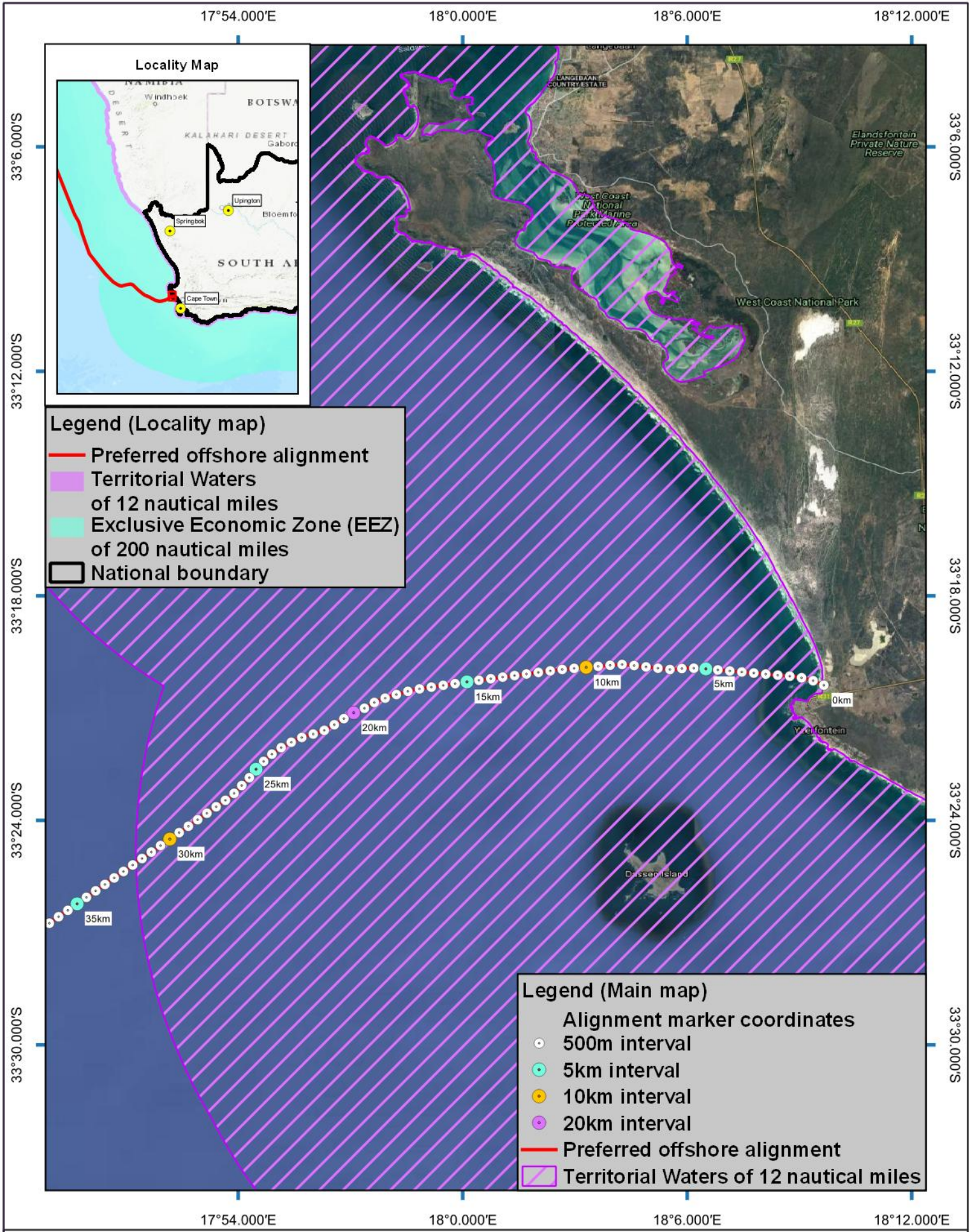
1km = 0.539957km

2AFRICA Landing

Yzerfontein

Offshore alignment  
with Offshore Lease Areas





**Legend (Locality map)**

- Preferred offshore alignment
- Territorial Waters of 12 nautical miles
- Exclusive Economic Zone (EEZ) of 200 nautical miles
- National boundary

**Legend (Main map)**

- Alignment marker coordinates
- 500m interval
- 5km interval
- 10km interval
- 20km interval
- Preferred offshore alignment
- Territorial Waters of 12 nautical miles



14°0'0"E 16°0'0"E 18°0'0"E

28°0'0"S

28°0'0"S

30°0'0"S

30°0'0"S

32°0'0"S

32°0'0"S

34°0'0"S

34°0'0"S

Locality Map

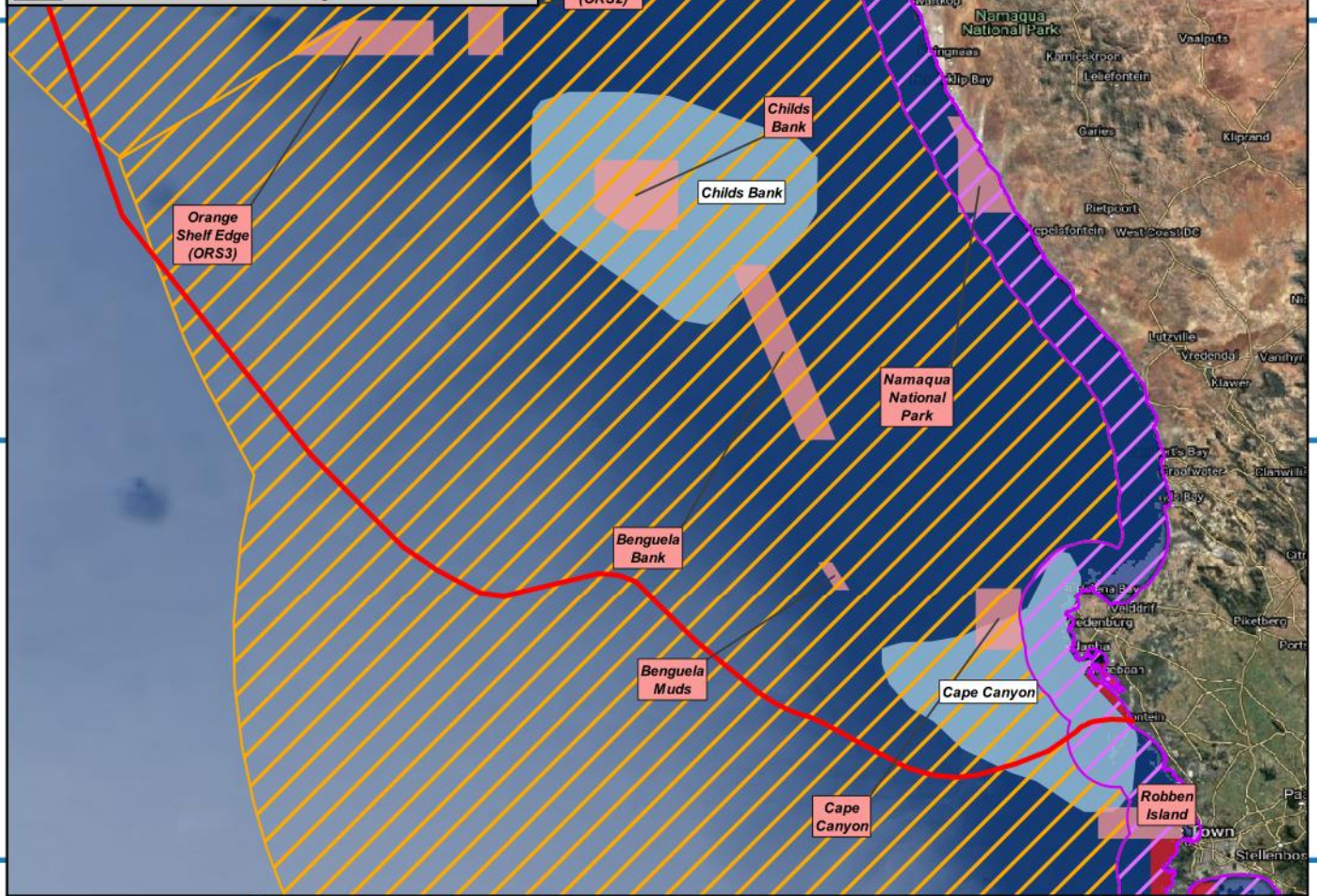


Legend (Main map)

- Preferred offshore alignment
- ▨ Territorial Waters of 12 nautical miles
- ▨ Exclusive Economic Zone (EEZ) of 200 nautical miles
- BSP Marine Protected Areas (SANBI: 2017)
- Marine Protected Areas (Gazetted - 03 Feb 2016)
- Focus areas for Offshore Protection

Legend (Locality map)

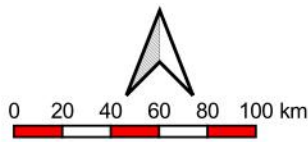
- Preferred offshore alignment
- ▨ Territorial Waters of 12 nautical miles
- ▨ Exclusive Economic Zone (EEZ) of 200 nautical miles
- ▭ National boundary



14°0'0"E 16°0'0"E 18°0'0"E

Mapping and layout by

For Giles Churchill



when printed at A4 (297 x 210 mm)  
Date of print: 13 May 2021

Co-Ordinate system  
Projection: Unprojected  
(Geographic)  
Ellipsoid: WGS84  
Units: Decimal Degrees

Distance notes  
1 nautical mile = 1.852km  
1km = 0.539957km

2AFRICA Landing

Yzerfontein

Offshore alignment up to  
Namibia territorial waters  
200 nautical miles (EEZ) offshore



18°4.474'E

18°22.252'E

18°40.030'E

18°57.808'E

32°35.608'S

32°53.386'S

33°11.165'S

33°28.943'S

33°46.721'S

34°4.499'S

32°35.608'S

32°53.386'S

33°11.165'S

33°28.943'S

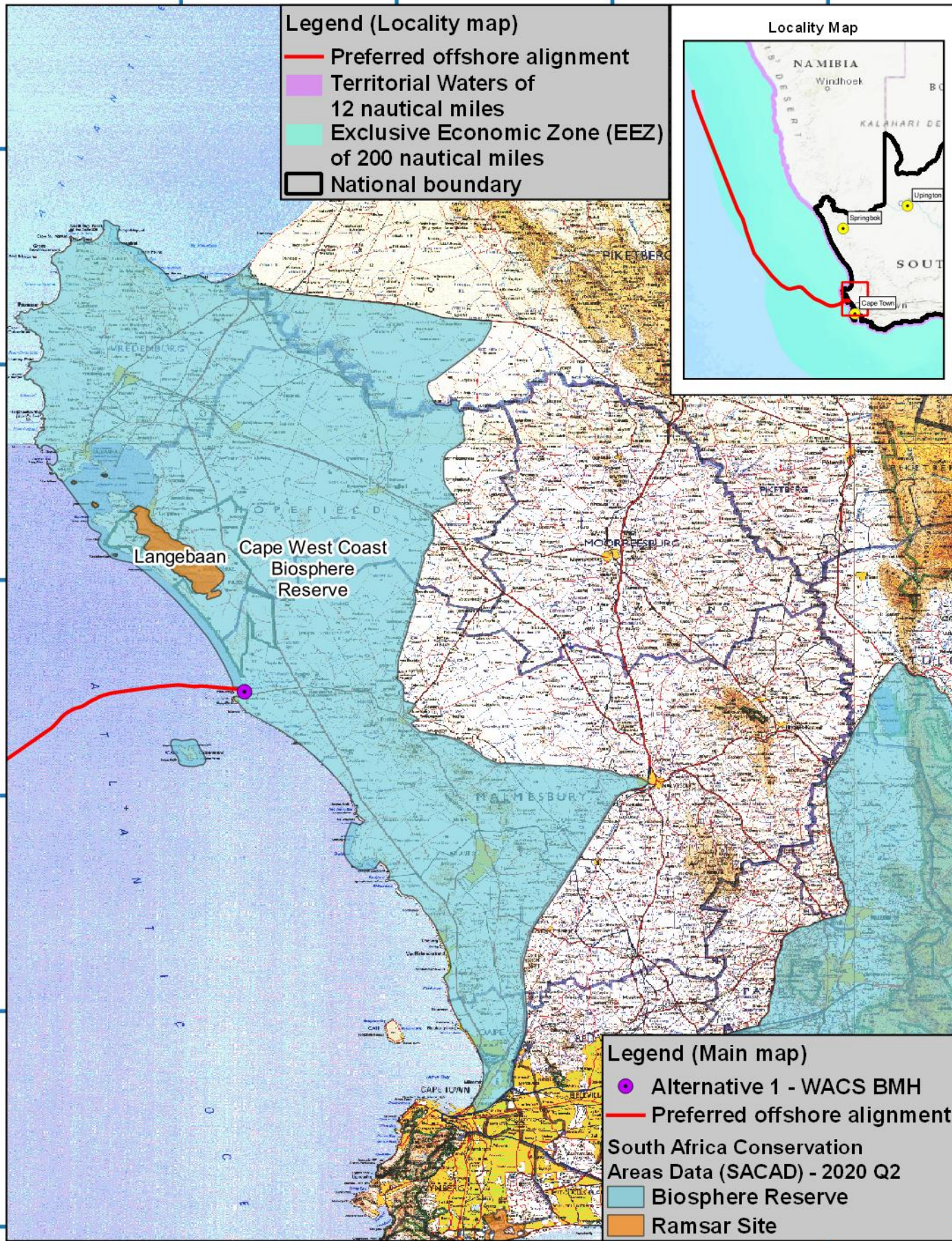
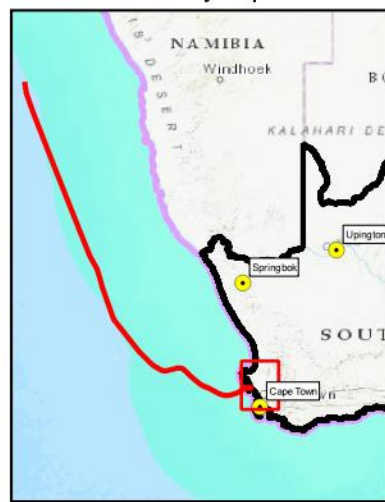
33°46.721'S

34°4.499'S

### Legend (Locality map)

- Preferred offshore alignment
- Territorial Waters of 12 nautical miles
- Exclusive Economic Zone (EEZ) of 200 nautical miles
- National boundary

### Locality Map



### Legend (Main map)

- Alternative 1 - WACS BMH
- Preferred offshore alignment
- South Africa Conservation Areas Data (SACAD) - 2020 Q2**
- Biosphere Reserve
- Ramsar Site

18°4.474'E

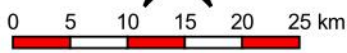
18°22.252'E

18°40.030'E

18°57.808'E

Mapping and layout by

For Giles Churchill



1:500000

when printed at A4 (297 x 210 mm)

Date of print: 13 May 2021

Co-Ordinate system  
 Projection: Unprojected  
 (Geographic)  
 Ellipsoid: WGS84  
 Units: Decimal Degrees

Main map grid coordinates  
 Degrees and Decimal Minutes

Distance notes  
 1 nautical mile = 1.852km  
 1km = 0.539957nm

2AFRICA Landing

Yzerfontein

**Offshore alignment  
 with South Africa Conservation  
 Areas Data (SACAD) - 2020 Q2**



18°9'36"E

18°10'12"E

18°10'48"E

18°11'24"E

18°12'0"E

33°18'36"S

33°19'12"S

33°19'48"S

33°20'24"S

33°21'0"S

33°18'36"S

33°19'12"S

33°19'48"S

33°20'24"S

33°21'0"S

Locality Map



Inset Zoom Map



Legend (Locality map)

- Preferred offshore alignment
- Territorial Waters of 12 nautical miles
- Exclusive Economic Zone (EEZ) of 200 nautical miles
- National boundary

Alternative 2 - BMH

Alternative 1 - WACS BMH

Legend (Main map)

- Alternative 1 - WACS BMH
- Alternative 2 - BMH
- Alternative 1 - Existing WACS CLS
- Alternative 1 - Existing WACS Front haul
- Preferred offshore alignment
- Protected Dune

18°9'36"E

18°10'12"E

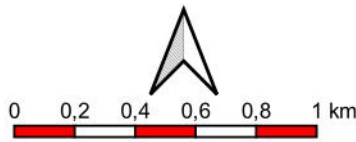
18°10'48"E

18°11'24"E

18°12'0"E

Mapping and layout by

For Giles Churchill



when printed at A4 (297 x 210 mm)  
Date of print: 13 May 2021

Co-Ordinate system  
Projection: Transverse Mercator  
Datum: Hartbeeshoek 1994  
Ellipsoid: WGS84  
Meridian: Lo19°  
Units: Metres

Distance notes

1 nautical mile = 1.852km  
1km = 0.539957nmi

2AFRICA Landing

Yzerfontein

Onshore alignment with alternatives, landing point and other points of interest



18°9.592'E      18°9.619'E      18°9.646'E      18°9.673'E      18°9.700'E

33°20.335'S

33°20.362'S

33°20.389'S

33°20.416'S

33°20.335'S

33°20.362'S

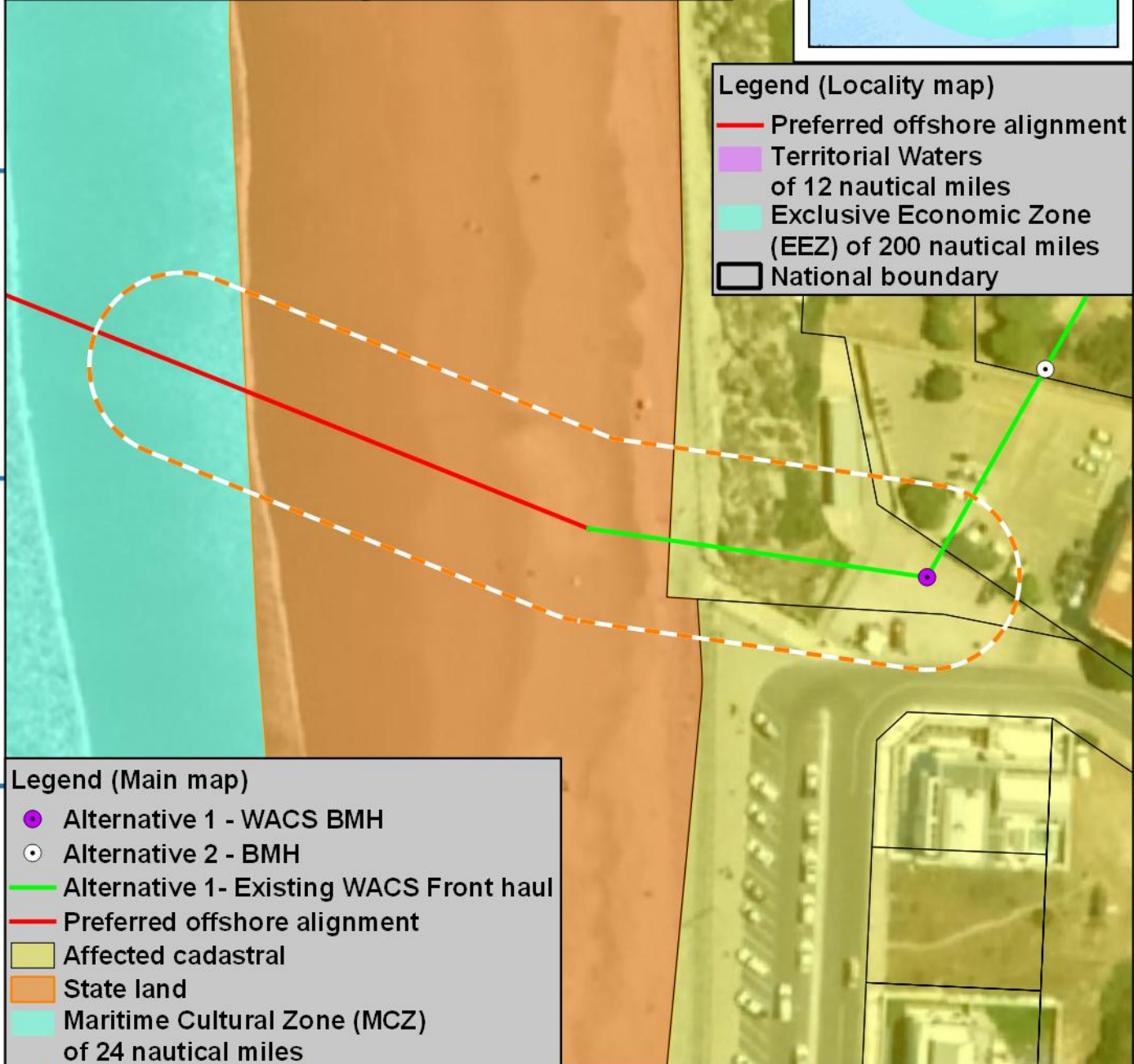
33°20.389'S

33°20.416'S



**Legend (Locality map)**

- Preferred offshore alignment
- Territorial Waters of 12 nautical miles
- Exclusive Economic Zone (EEZ) of 200 nautical miles
- National boundary



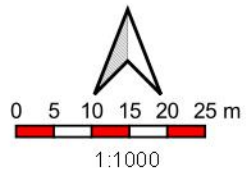
**Legend (Main map)**

- Alternative 1 - WACS BMH
- Alternative 2 - BMH
- Alternative 1- Existing WACS Front haul
- Preferred offshore alignment
- Affected cadastral
- State land
- Maritime Cultural Zone (MCZ) of 24 nautical miles

18°9.592'E      18°9.619'E      18°9.646'E      18°9.673'E      18°9.700'E

Mapping and layout by **S3 Technologies** Spatial Systems Solutions

For Giles Churchill **acer AFRICA**



when printed at A4 (297 x 210 mm)  
Date of print: 13 May 2021

Co-Ordinate system  
Projection: Transverse Mercator  
Datum: Hartebeeshoek 1994  
Ellipsoid: WGS84  
Meridian: Lo19°  
Units: Metres

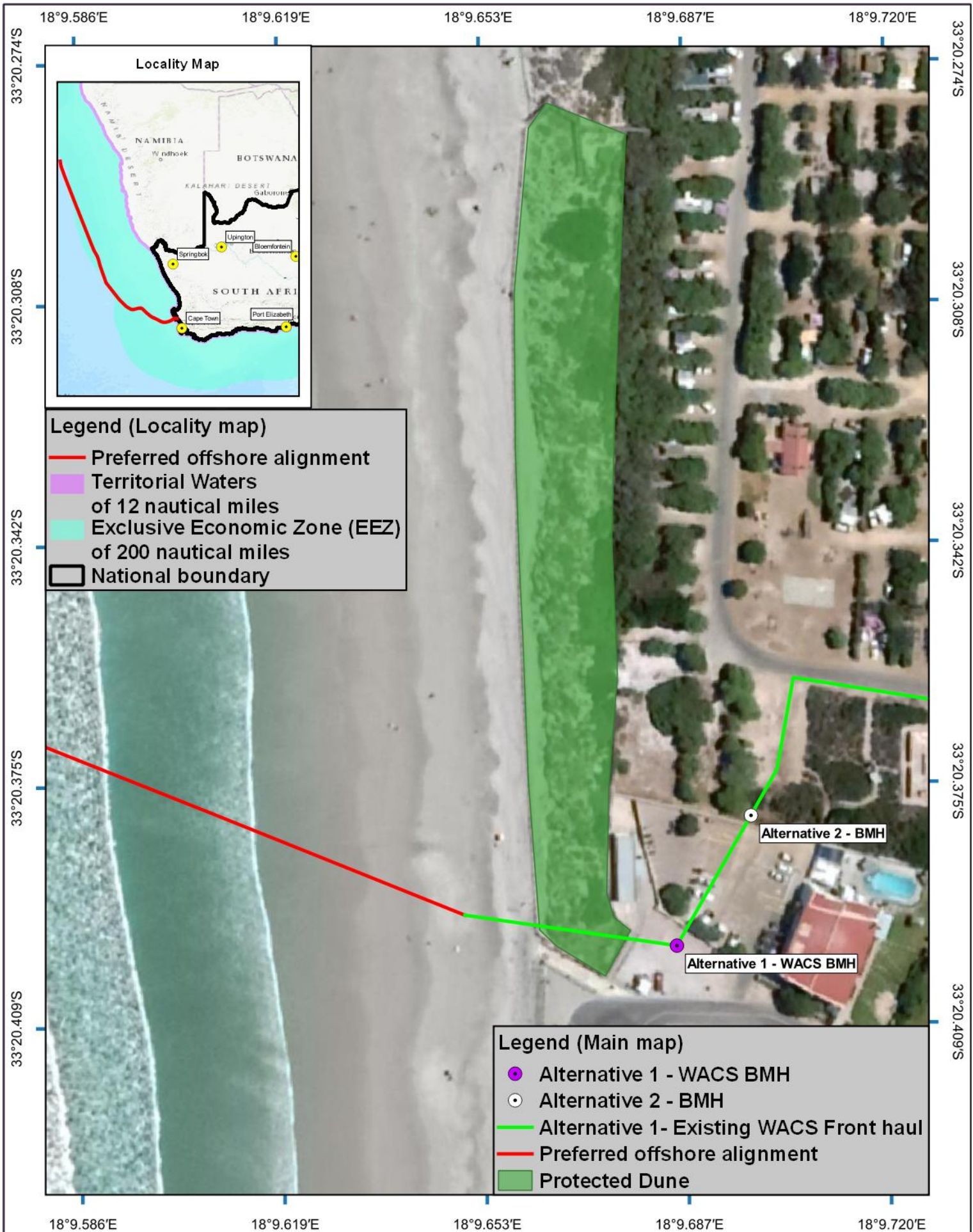
**2AFRICA Landing**

**Yzerfontein**

**Onshore alignment with alternatives, landing point and construction footprint**

Distance notes  
1 nautical mile = 1.852km  
1km = 0.539957km







18°9'36"E 18°10'12"E 18°10'48"E 18°11'24"E 18°12'0"E

33°18'36"S  
33°19'12"S

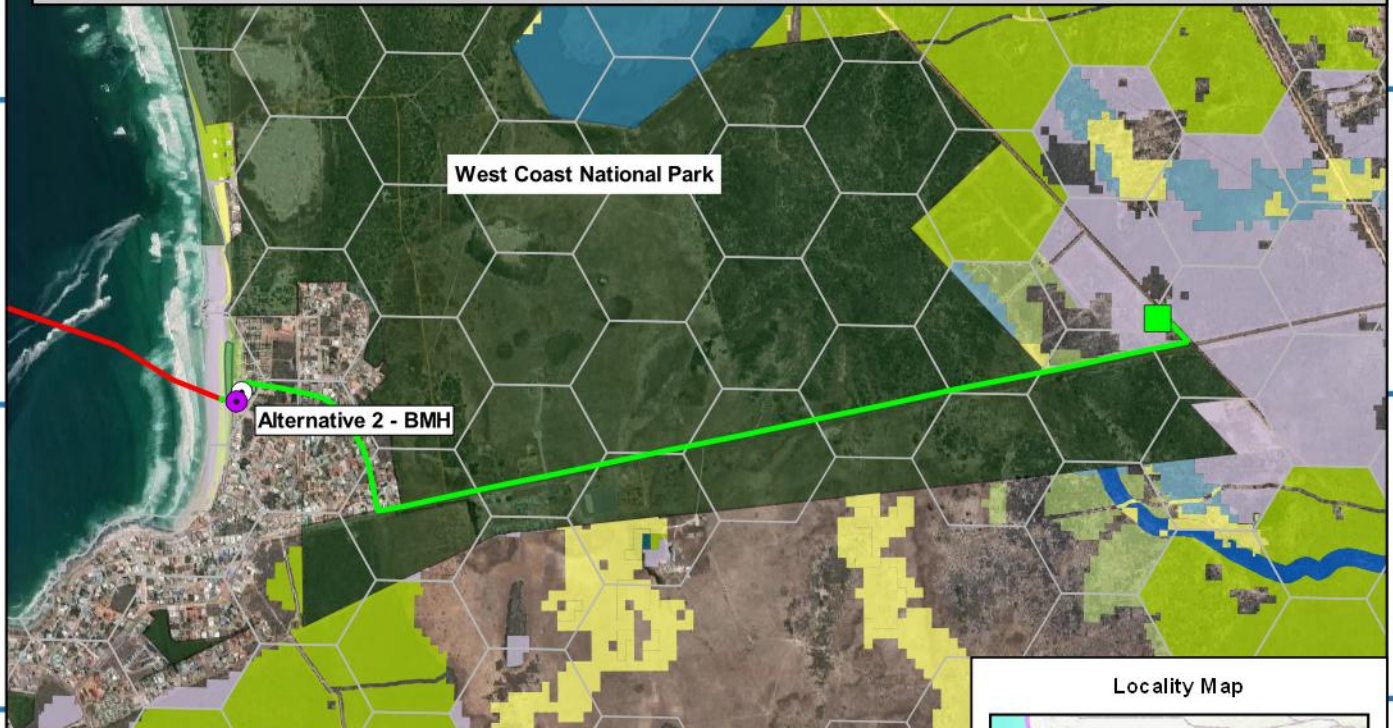
33°18'36"S  
33°19'12"S

**Legend (Main map)**

- Alternative 1 - WACS BMH
- Alternative 2 - BMH
- Alternative 1 - Existing WACS CLS
- Alternative 1- Existing WACS Front haul
- Preferred offshore alignment
- Protected Dune
- Critical Biodiversity Area (CBA 1) category
  - CBA: River
  - CBA: Terrestrial
  - CBA: Wetland
- Ecological Support Area (ESA 1) category
  - ESA: Aquatic
  - ESA: Terrestrial
- Ecological Support Area (ESA 2) category
  - ESA2: Restore from other land use
- Other Natural Area (ONA)
- Reasons

33°19'48"S  
33°20'24"S

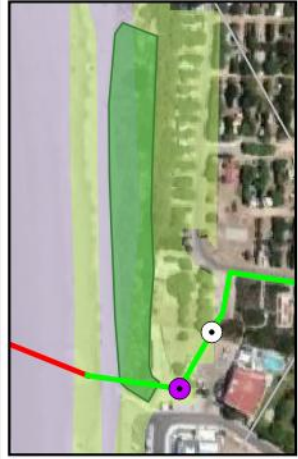
33°19'48"S  
33°20'24"S



33°21'0"S  
33°21'36"S

33°21'0"S  
33°21'36"S

**Inset Zoom Map**



**Locality Map**



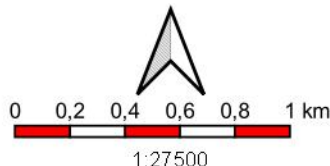
**Legend (Locality map)**

- Preferred offshore alignment
- Territorial Waters of 12 nautical miles
- Exclusive Economic Zone (EEZ) of 200 nautical miles
- National boundary

18°9'36"E 18°10'12"E 18°10'48"E 18°11'24"E 18°12'0"E

Mapping and layout by

For Giles Churchill



when printed at A4 (297 x 210 mm)  
Date of print: 13 May 2021

Co-Ordinate system  
Projection: Transverse Mercator  
Datum: Hartebeeshoek 1994  
Ellipsoid: WGS84  
Meridian: Lo19°  
Units: Metres

Distance notes

1 nautical mile = 1.852km  
1km = 0.539957nmi

**2AFRICA Landing**

**Yzerfontein**

**Onshore alignment with alternatives, landing point and Sensitivity and Veg map data**



18°9'36"E      18°10'12"E      18°10'48"E      18°11'24"E      18°12'0"E

33°18'36"S  
33°19'12"S

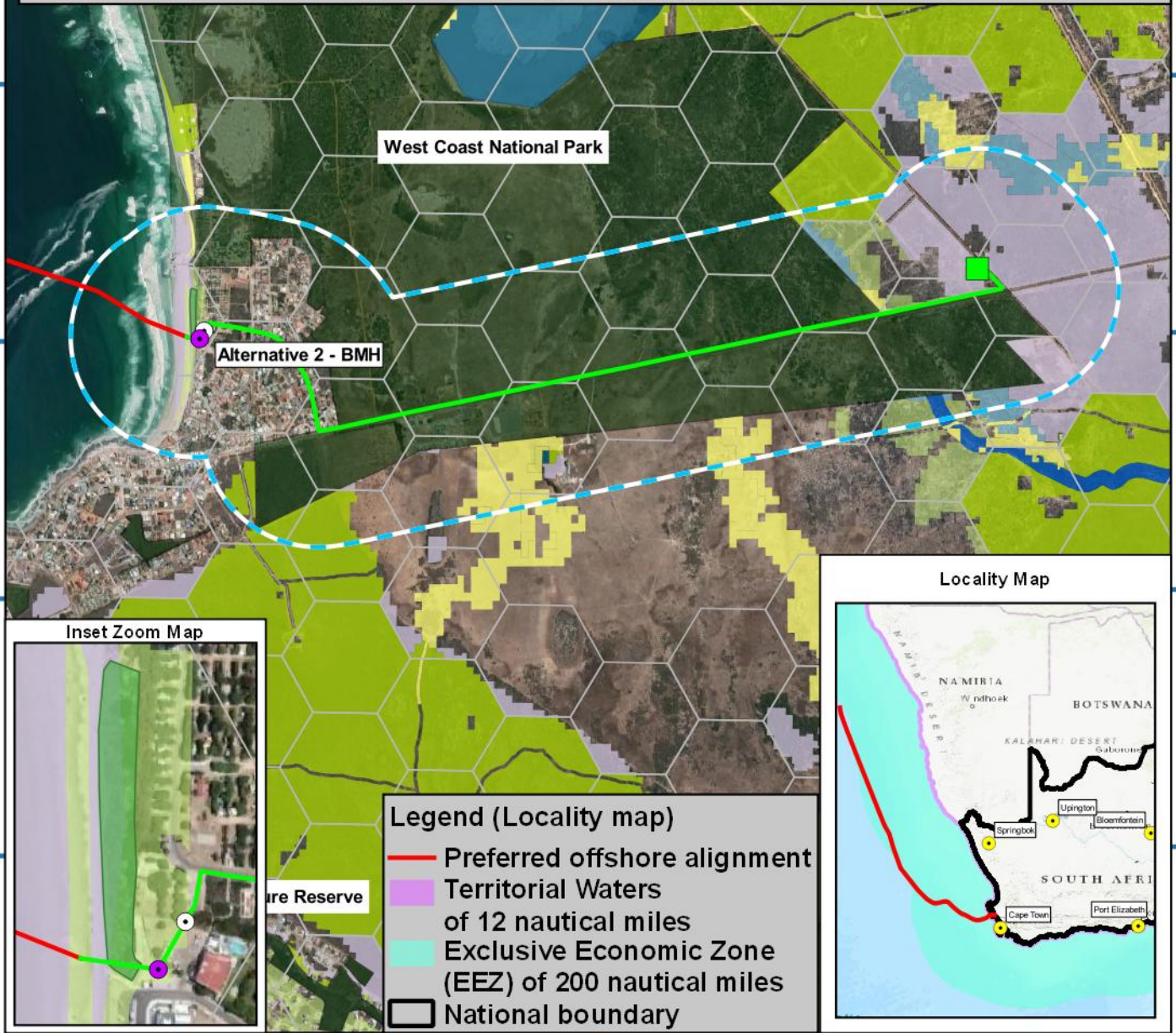
33°18'36"S  
33°19'12"S

**Legend (Main map)**

- Alternative 1 - WACS BMH
- Alternative 2 - BMH
- Alternative 1 - Existing WACS CLS
- Alternative 1- Existing WACS Front haul
- Preferred offshore alignment
- Protected Dune
- Critical Biodiversity Area (CBA 1) category
  - CBA: River
  - CBA: Terrestrial
  - CBA: Wetland
- Ecological Support Area (ESA 1) category
  - ESA: Aquatic
  - ESA: Terrestrial
- Ecological Support Area (ESA 2) category
  - ESA2: Restore from other land use
- Other Natural Area (ONA)
- Reasons
- Landing site and onshore alignment buffer (500m)

33°19'48"S  
33°20'24"S

33°19'48"S  
33°20'24"S



33°21'0"S  
33°21'36"S

33°21'0"S  
33°21'36"S

**Inset Zoom Map**



**Locality Map**



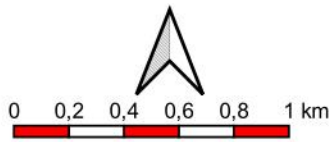
**Legend (Locality map)**

- Preferred offshore alignment
- Territorial Waters of 12 nautical miles
- Exclusive Economic Zone (EEZ) of 200 nautical miles
- National boundary

18°9'36"E      18°10'12"E      18°10'48"E      18°11'24"E      18°12'0"E

Mapping and layout by

For Giles Churchill



1:27500

when printed at A4 (297 x 210 mm)

Date of print: 13 May 2021

Co-Ordinate system  
Projection: Transverse Mercator  
Datum: Hartebeeshoek 1994  
Ellipsoid: WGS84  
Meridian: Lo19°  
Units: Metres

Distance notes

1 nautical mile = 1.852km

1km = 0.539957km

**2AFRICA Landing**

**Yzerfontein**

**Onshore alignment with alternatives, landing point and Sensitivity and Veg map data**



18°9'36"E      18°10'12"E      18°10'48"E      18°11'24"E      18°12'0"E

33°18'36"S  
33°19'12"S

33°18'36"S  
33°19'12"S

33°19'48"S

33°19'48"S

33°20'24"S

33°20'24"S

33°21'0"S

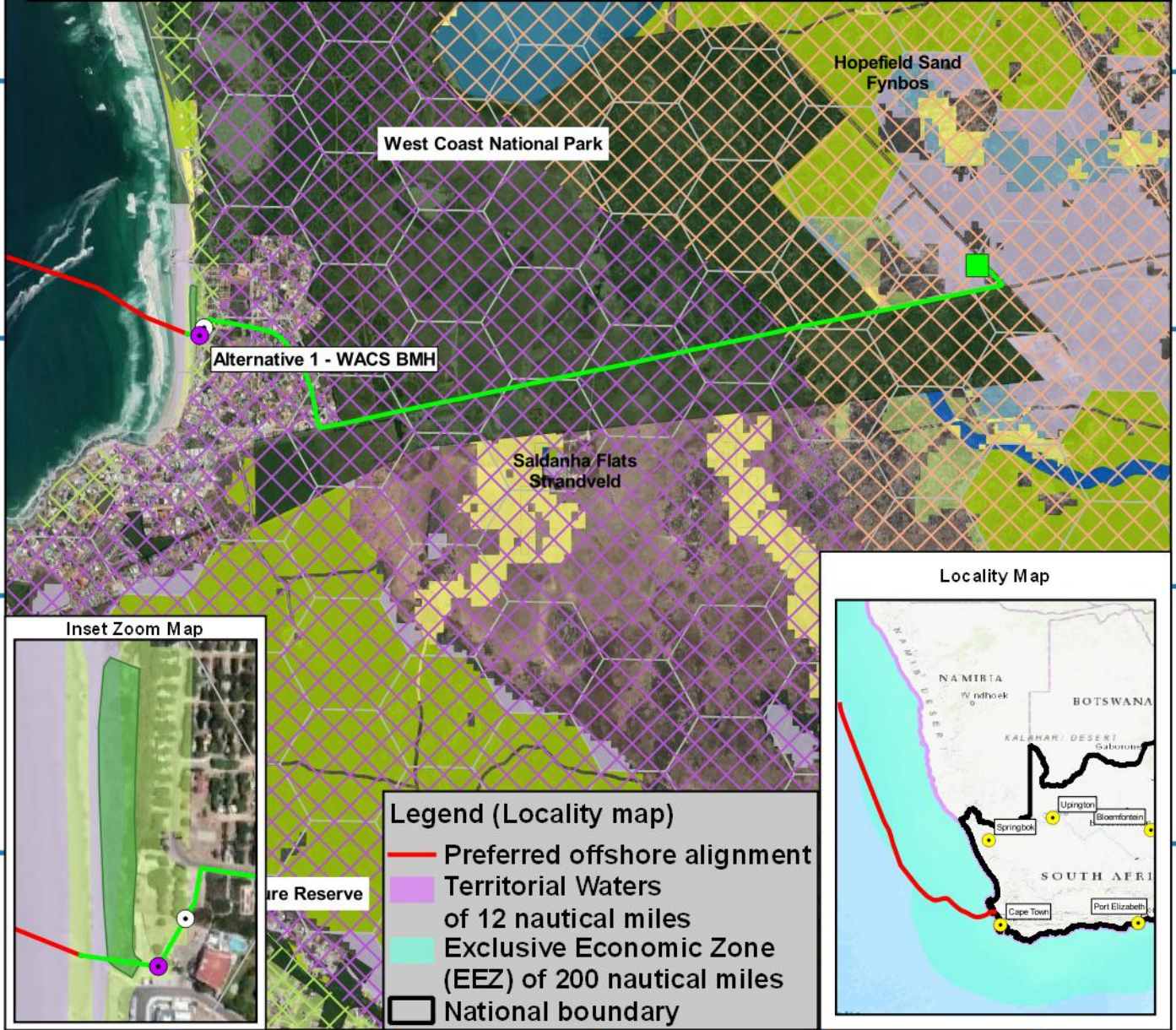
33°21'0"S

33°21'36"S

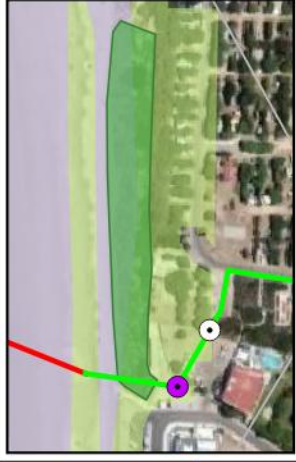
33°21'36"S

**Legend (Main map)**

- Alternative 1 - WACS BMH
- Alternative 2 - BMH
- Alternative 1 - Existing WACS CLS
- Alternative 1- Existing WACS Front haul
- Preferred offshore alignment
- Protected Dune
- Critical Biodiversity Area (CBA 1) category
  - CBA: River
  - CBA: Terrestrial
  - CBA: Wetland
- Ecological Support Area (ESA 1) category
  - ESA: Aquatic
  - ESA: Terrestrial
- Ecological Support Area (ESA 2) category
  - ESA2: Restore from other land use
- Other Natural Area (ONA)
- Reasons
- SANBI Vegmap (2018 Beta)
  - ⊗ Cape Seashore Vegetation
  - ⊗ Hopefield Sand Fynbos
  - ⊗ Langebaan Dune Strandveld
  - ⊗ Saldanha Flats Strandveld



**Inset Zoom Map**



**Locality Map**



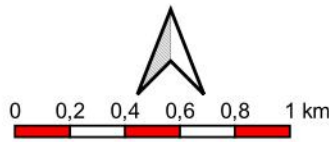
**Legend (Locality map)**

- Preferred offshore alignment
- Territorial Waters of 12 nautical miles
- Exclusive Economic Zone (EEZ) of 200 nautical miles
- National boundary

18°9'36"E      18°10'12"E      18°10'48"E      18°11'24"E      18°12'0"E

Mapping and layout by

For Giles Churchill



when printed at A4 (297 x 210 mm)  
Date of print: 13 May 2021

Co-Ordinate system  
Projection: Transverse Mercator  
Datum: Hartebeeshoek 1994  
Ellipsoid: WGS84  
Meridian: Lo19°  
Units: Metres

Distance notes

1 nautical mile = 1.852km  
1km = 0.539957km

**2AFRICA Landing**

**Yzerfontein**

**Onshore alignment with alternatives, landing point and Sensitivity and Veg map data**



18°9'36"E 18°10'12"E 18°10'48"E 18°11'24"E 18°12'0"E

33°18'36"S  
33°19'12"S  
33°19'48"S  
33°20'24"S  
33°21'0"S  
33°21'36"S

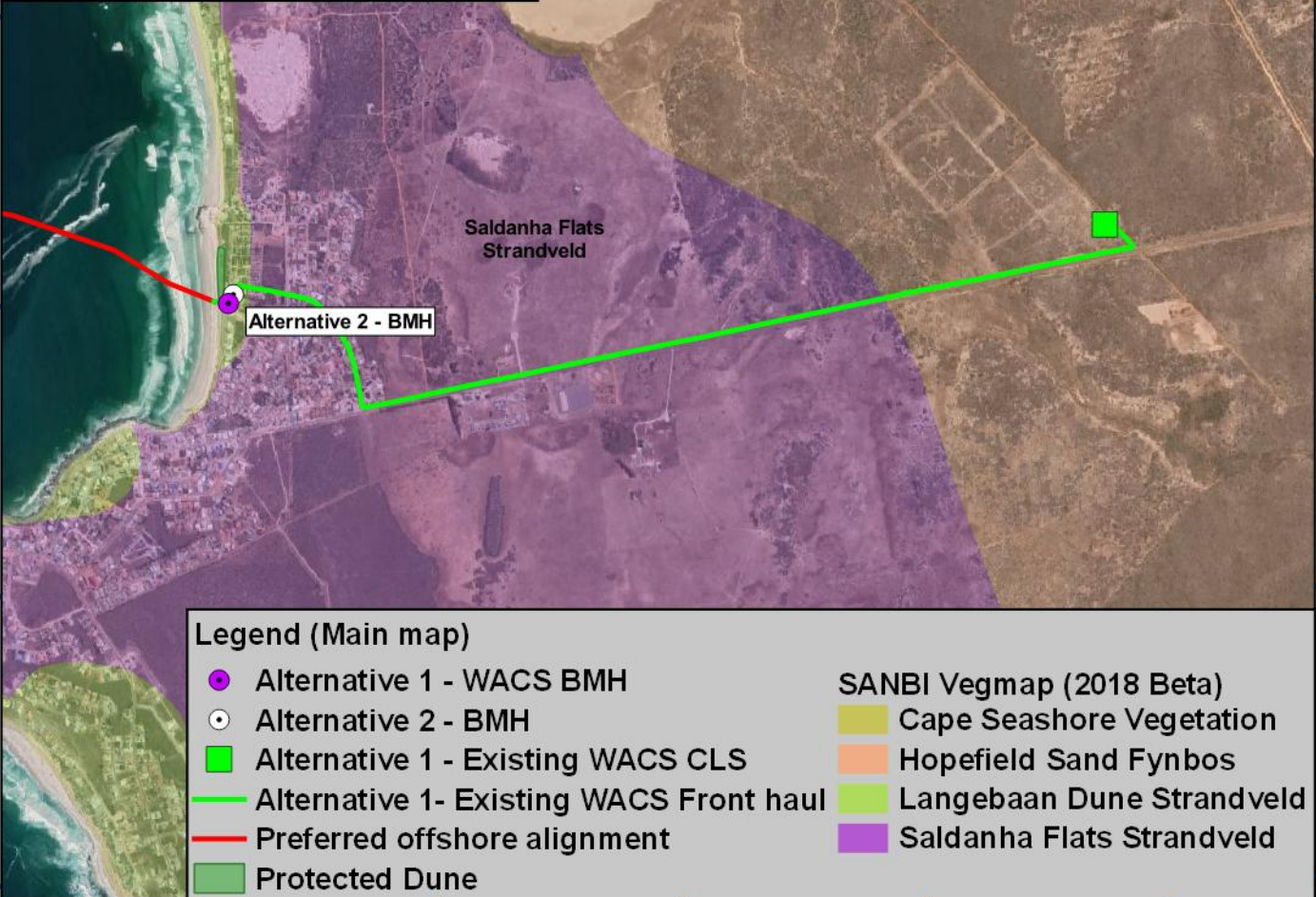
33°18'36"S  
33°19'12"S  
33°19'48"S  
33°20'24"S  
33°21'0"S  
33°21'36"S

**Locality Map**



**Legend (Locality map)**

- Preferred offshore alignment
- Territorial Waters of 12 nautical miles
- Exclusive Economic Zone (EEZ) of 200 nautical miles
- National boundary



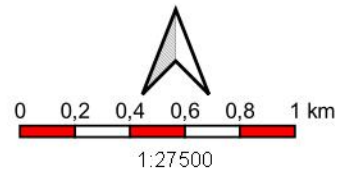
**Legend (Main map)**

<span style="color: purple;">●</span> Alternative 1 - WACS BMH	<span style="background-color: #9ACD32; border: 1px solid black; display: inline-block; width: 10px; height: 10px;"></span> Cape Seashore Vegetation
<span style="color: black;">○</span> Alternative 2 - BMH	<span style="background-color: #FFDAB9; border: 1px solid black; display: inline-block; width: 10px; height: 10px;"></span> Hopefield Sand Fynbos
<span style="color: green;">■</span> Alternative 1 - Existing WACS CLS	<span style="background-color: #90EE90; border: 1px solid black; display: inline-block; width: 10px; height: 10px;"></span> Langebaan Dune Strandveld
<span style="color: green;">—</span> Alternative 1- Existing WACS Front haul	<span style="background-color: #800080; border: 1px solid black; display: inline-block; width: 10px; height: 10px;"></span> Saldanha Flats Strandveld
<span style="color: red;">—</span> Preferred offshore alignment	
<span style="background-color: #90EE90; border: 1px solid black; display: inline-block; width: 10px; height: 10px;"></span> Protected Dune	

18°9'36"E 18°10'12"E 18°10'48"E 18°11'24"E 18°12'0"E

Mapping and layout by **S3 Technologies** Spatial Systems Solutions

For Giles Churchill **acer AFRICA**



Co-Ordinate system  
Projection: Transverse Mercator  
Datum: Hartbeeshoek 1994  
Ellipsoid: WGS84  
Meridian: Lo19°  
Units: Metres

**2AFRICA Landing**

**Yzerfontein**

**Onshore alignment with alternatives, landing point and Veg Map**

when printed at A4 (297 x 210 mm)  
Date of print: 13 May 2021

Distance notes  
1 nautical mile = 1.852km  
1km = 0.539957nmi



18°9'36"E 18°10'12"E 18°10'48"E 18°11'24"E 18°12'0"E

33°18'36"S  
33°19'12"S  
33°19'48"S  
33°20'24"S  
33°21'0"S  
33°21'36"S

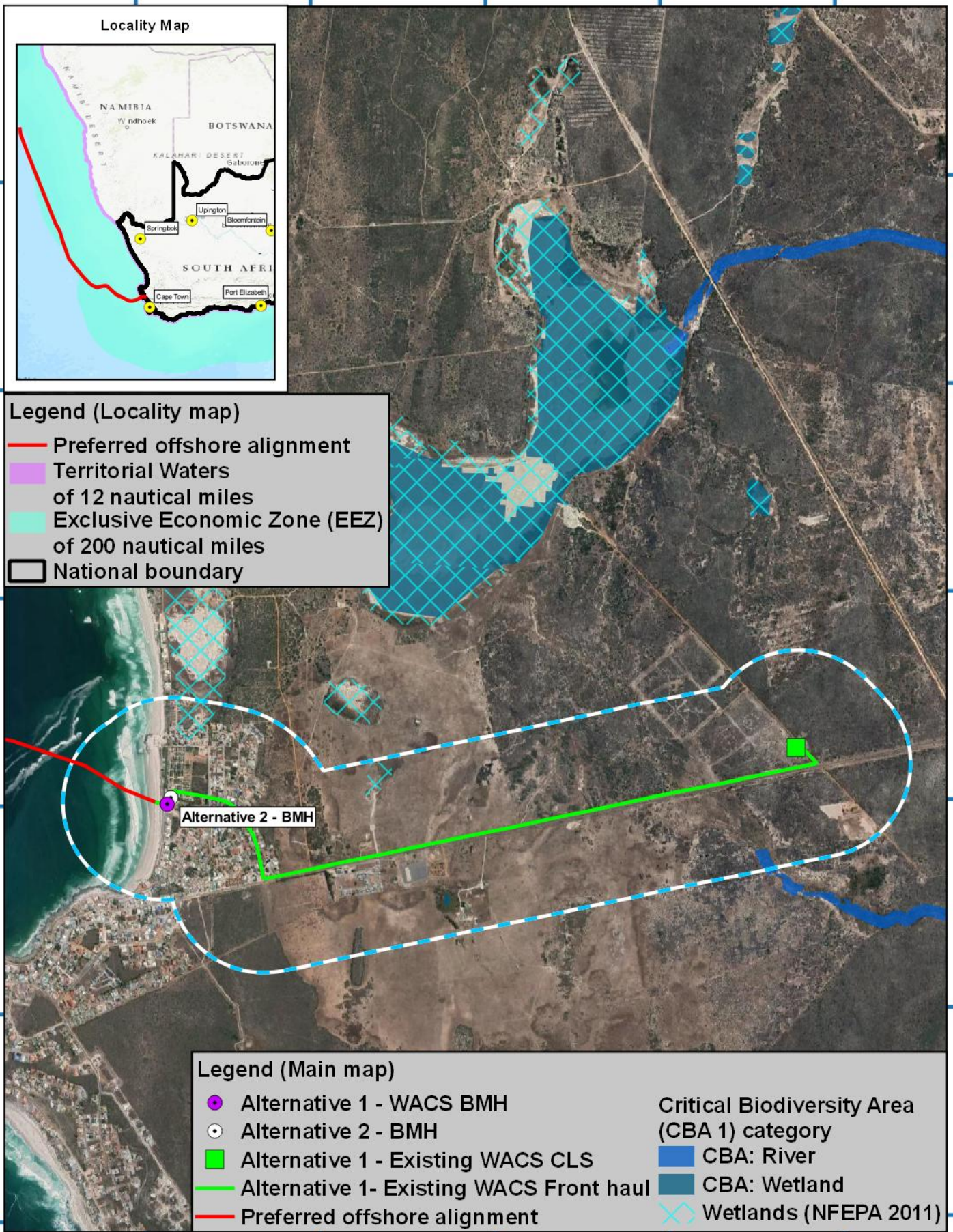
33°18'36"S  
33°19'12"S  
33°19'48"S  
33°20'24"S  
33°21'0"S  
33°21'36"S

**Locality Map**



**Legend (Locality map)**

- Preferred offshore alignment
- Territorial Waters of 12 nautical miles
- Exclusive Economic Zone (EEZ) of 200 nautical miles
- National boundary



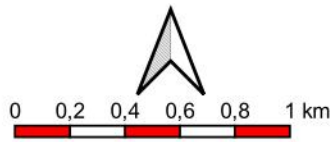
**Legend (Main map)**

- Alternative 1 - WACS BMH
- Alternative 2 - BMH
- Alternative 1 - Existing WACS CLS
- Alternative 1- Existing WACS Front haul
- Preferred offshore alignment
- Critical Biodiversity Area (CBA 1) category
- CBA: River
- CBA: Wetland
- Wetlands (NFEPA 2011)

18°9'36"E 18°10'12"E 18°10'48"E 18°11'24"E 18°12'0"E

Mapping and layout by

For Giles Churchill



1:27500

when printed at A4 (297 x 210 mm)

Date of print: 13 May 2021

Co-Ordinate system  
Projection: Transverse Mercator  
Datum: Hartebeeshoek 1994  
Ellipsoid: WGS84  
Meridian: Lo19°  
Units: Metres

Distance notes

1 nautical mile = 1.852km

1km = 0.539957km

**2AFRICA Landing**

**Yzerfontein**

**Onshore alignment with alternatives, landing point and Wetland data**



18°9'36"E 18°10'12"E 18°10'48"E 18°11'24"E 18°12'0"E

33°18'36"S  
33°19'12"S  
33°19'48"S  
33°20'24"S  
33°21'0"S  
33°21'36"S

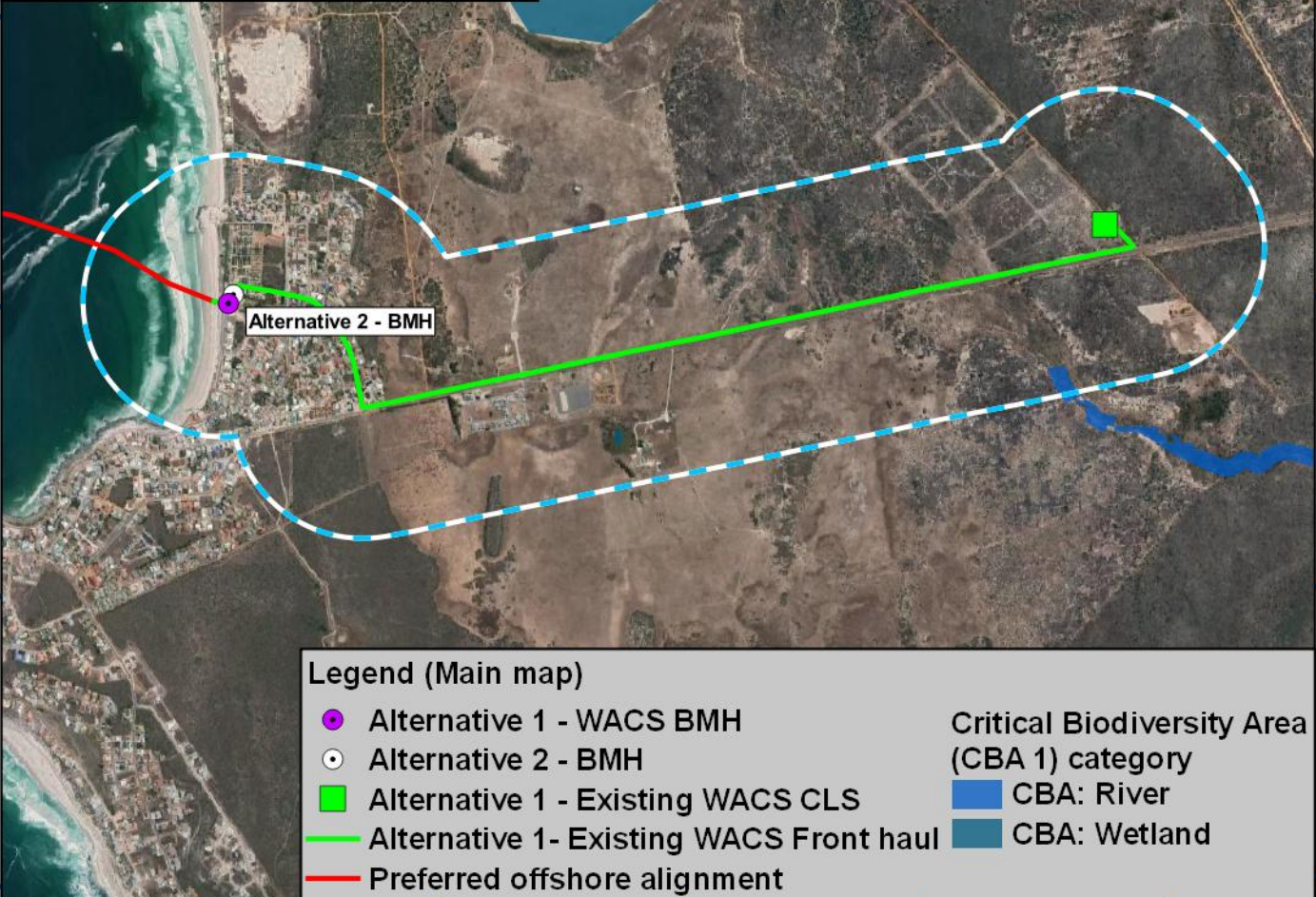
33°18'36"S  
33°19'12"S  
33°19'48"S  
33°20'24"S  
33°21'0"S  
33°21'36"S

**Locality Map**



**Legend (Locality map)**

- Preferred offshore alignment
- Territorial Waters of 12 nautical miles
- Exclusive Economic Zone (EEZ) of 200 nautical miles
- National boundary



**Legend (Main map)**

- Alternative 1 - WACS BMH
- Alternative 2 - BMH
- Alternative 1 - Existing WACS CLS
- Alternative 1 - Existing WACS Front haul
- Preferred offshore alignment

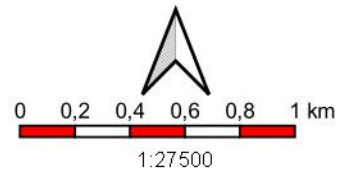
**Critical Biodiversity Area (CBA 1) category**

- CBA: River
- CBA: Wetland

18°9'36"E 18°10'12"E 18°10'48"E 18°11'24"E 18°12'0"E

Mapping and layout by  
**S3 Technologies**  
Spatial Systems Solutions

For Giles Churchill  
**acer**  
AFRICA



when printed at A4 (297 x 210 mm)  
Date of print: 13 May 2021

Co-Ordinate system  
Projection: Transverse Mercator  
Datum: Hartebeeshoek 1994  
Ellipsoid: WGS84  
Meridian: Lo19°  
Units: Metres

Distance notes  
1 nautical mile = 1.852km  
1km = 0.539957km

**2AFRICA Landing**

**Yzerfontein**

**Onshore alignment with alternatives, landing point and Wetland data**



18°5.130'E 18°6.923'E 18°8.717'E 18°10.511'E 18°12.304'E 18°14.098'E

33°12.693'S 33°14.487'S 33°16.280'S 33°18.074'S 33°19.867'S 33°21.661'S 33°23.455'S 33°25.248'S

33°12.693'S 33°14.487'S 33°16.280'S 33°18.074'S 33°19.867'S 33°21.661'S 33°23.455'S 33°25.248'S

**Legend (Main map)**

- Alternative 1 - WACS BMH
- Alternative 2 - BMH
- Alternative 1 - Existing WACS CLS
- Alternative 1 - Existing WACS Front haul
- Preferred offshore alignment

**Critical Biodiversity Area (CBA 1) category**

- CBA: River
- CBA: Terrestrial
- CBA: Wetland

**Ecological Support Area (ESA 1) category**

- ESA: Aquatic
- ESA: Terrestrial

**Ecological Support Area (ESA 2) category**

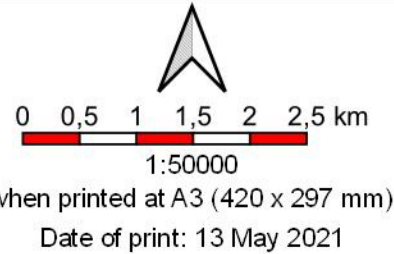
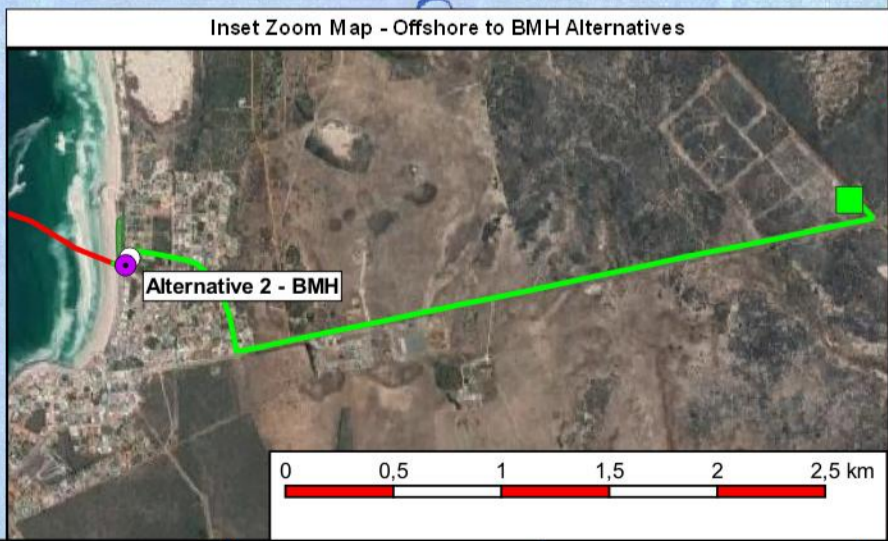
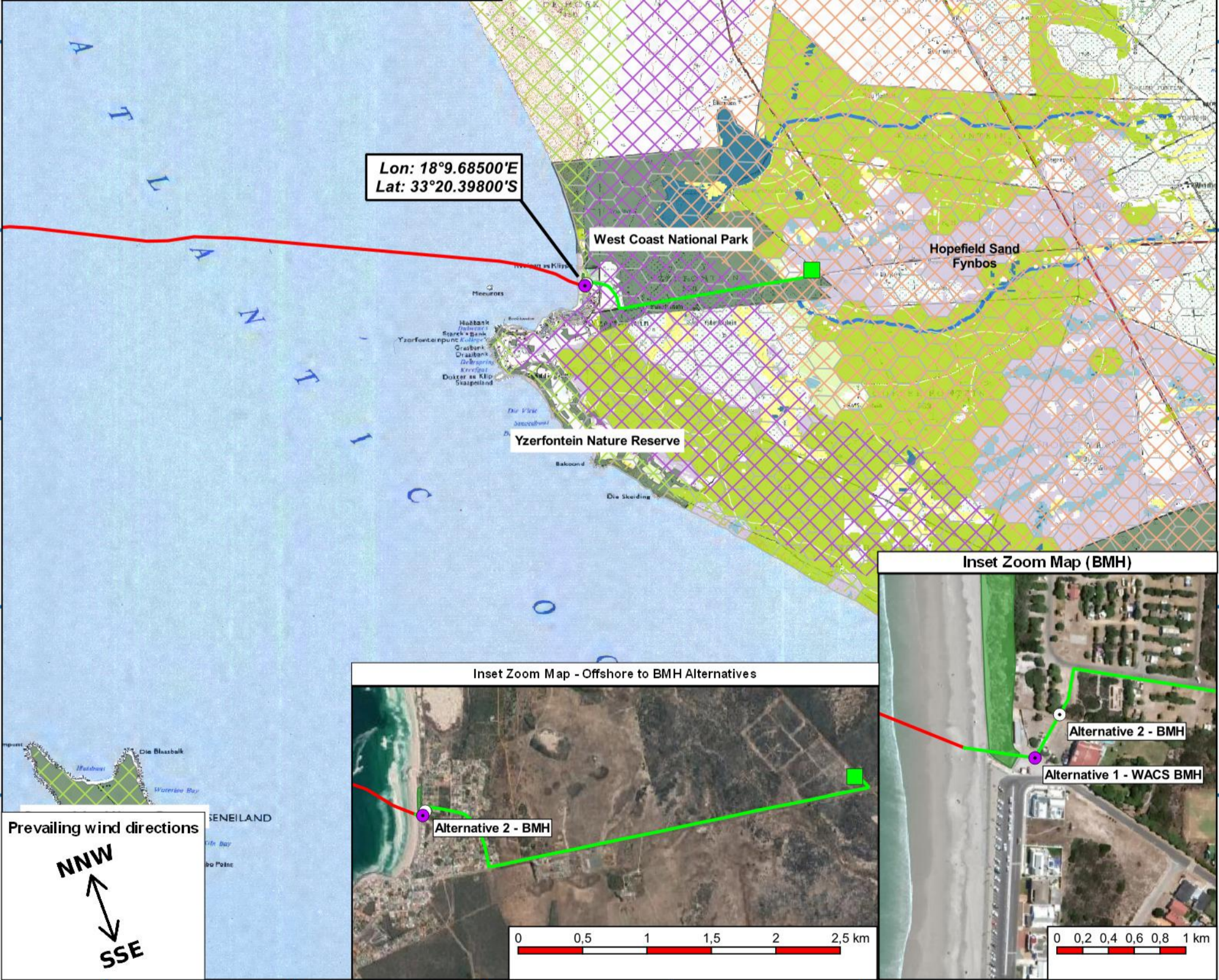
- ESA2: Restore from other land use
- ESA2: Restore from plantation or high density IAP
- Other Natural Area (ONA)
- Protected areas (PA)
- Protected Dune
- Reasons

**SANBI Vegmap (2018 Beta)**

- Cape Seashore Vegetation
- Hopefield Sand Fynbos
- Langebaan Dune Strandveld
- Saldanha Flats Strandveld

**Legend (Locality map)**

- Preferred offshore alignment
- Territorial Waters of 12 nautical miles
- Exclusive Economic Zone (EEZ) of 200 nautical miles
- National boundary



Co-Ordinate system  
 Projection: Unprojected (Geographic)  
 Ellipsoid: WGS84  
 Units: Decimal Degrees  
 Main map grid coordinates  
 Degrees and Decimal Minutes  
 Distance notes  
 1 nautical mile = 1.852km  
 1km = 0.539957km

**2AFRICA Landing**

**Yzerfontein**

**Locality Map**



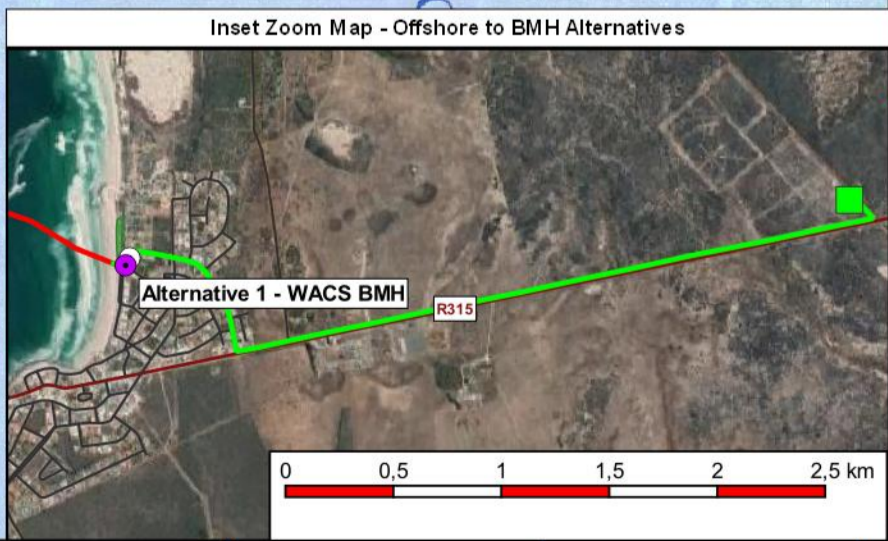
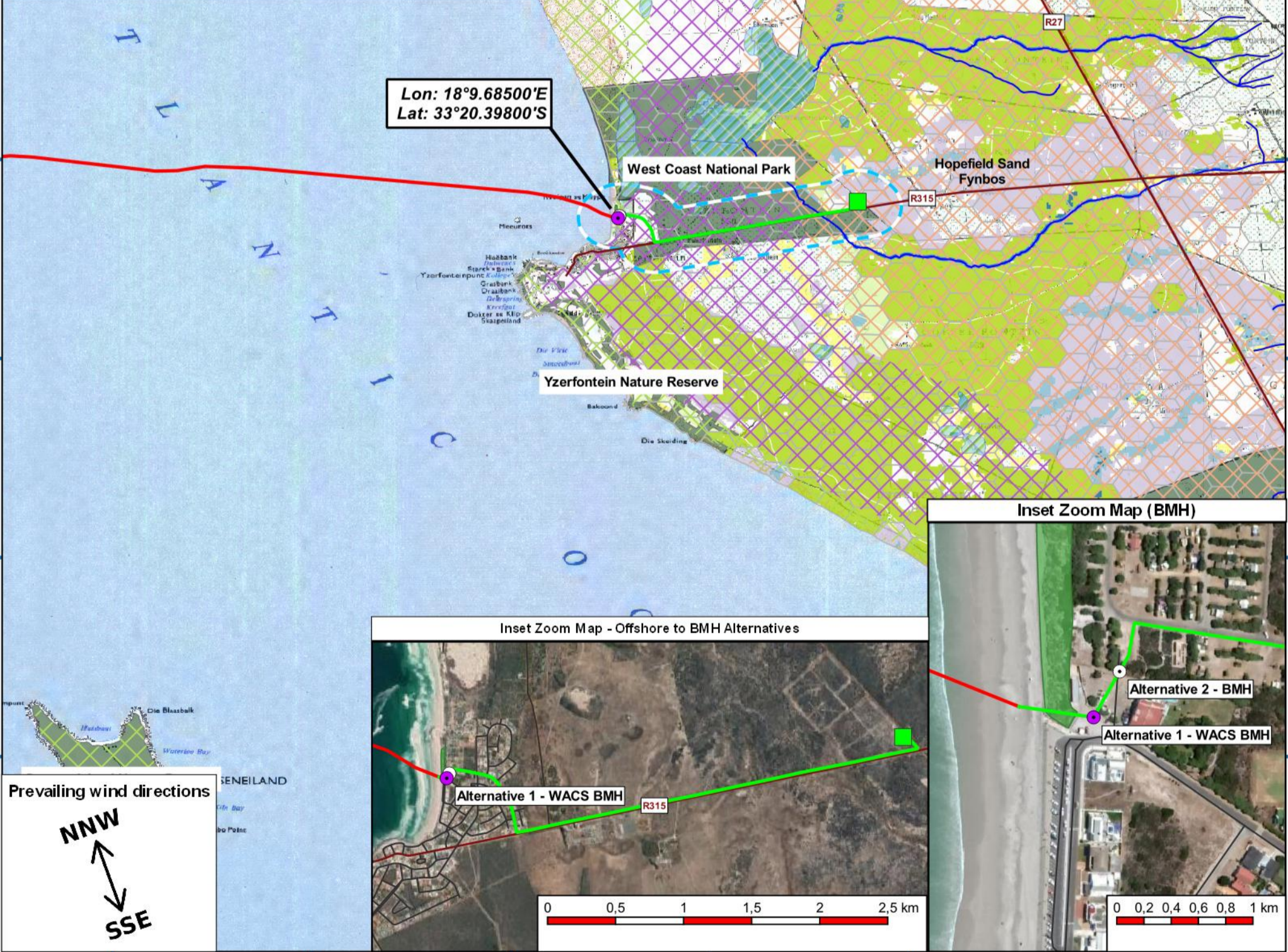
18°5.130'E 18°6.923'E 18°8.717'E 18°10.511'E 18°12.304'E 18°14.098'E

33°12.693'S 33°14.487'S 33°16.280'S 33°18.074'S 33°19.867'S 33°21.661'S 33°23.455'S 33°25.248'S

33°12.693'S 33°14.487'S 33°16.280'S 33°18.074'S 33°19.867'S 33°21.661'S 33°23.455'S 33°25.248'S

- Legend (Main map)**
- Alternative 1 - Existing WACS Front haul
  - Preferred offshore alignment
  - Alternative 1 - WACS BMH
  - Alternative 2 - BMH
  - Alternative 1 - Existing WACS CLS
  - Landing site and onshore alignment buffer (500m)
  - Wetlands (NFEPA 2011)
  - River lines (NGI)
- Critical Biodiversity Area (CBA 1) category**
- CBA: River
  - CBA: Terrestrial
  - CBA: Wetland
- Ecological Support Area (ESA 1) category**
- ESA: Aquatic
  - ESA: Terrestrial
- Ecological Support Area (ESA 2) category**
- ESA2: Restore from other land use
  - ESA2: Restore from plantation or high density IAP
  - Other Natural Area (ONA)
  - Protected areas (PA)
  - Protected Dune
  - Reasons
- SANBI Vegmap (2018 Beta)**
- Cape Seashore Vegetation
  - Hopefield Sand Fynbos
  - Langebaan Dune Strandveld
  - Saldanha Flats Strandveld

- Legend (Locality map)**
- Preferred offshore alignment
  - Territorial Waters of 12 nautical miles
  - Exclusive Economic Zone (EEZ) of 200 nautical miles
  - National boundary



Mapping and layout by  
  
Spatial Systems Solutions

For Giles Churchill

0 0,5 1 1,5 2 2,5 km  
 1:50000  
 when printed at A3 (420 x 297 mm)  
 Date of print: 13 May 2021

Co-Ordinate system  
 Projection: Unprojected (Geographic)  
 Ellipsoid: WGS84  
 Units: Decimal Degrees  
 Main map grid coordinates  
 Degrees and Decimal Minutes  
 Distance notes  
 1 nautical mile = 1.852km  
 1km = 0.539957km

**2AFRICA Landing**  
 Yzerfontein  
 Locality Map



18°9.592'E      18°9.619'E      18°9.646'E      18°9.673'E      18°9.700'E

33°20.335'S

33°20.362'S

33°20.389'S

33°20.416'S

33°20.335'S

33°20.362'S

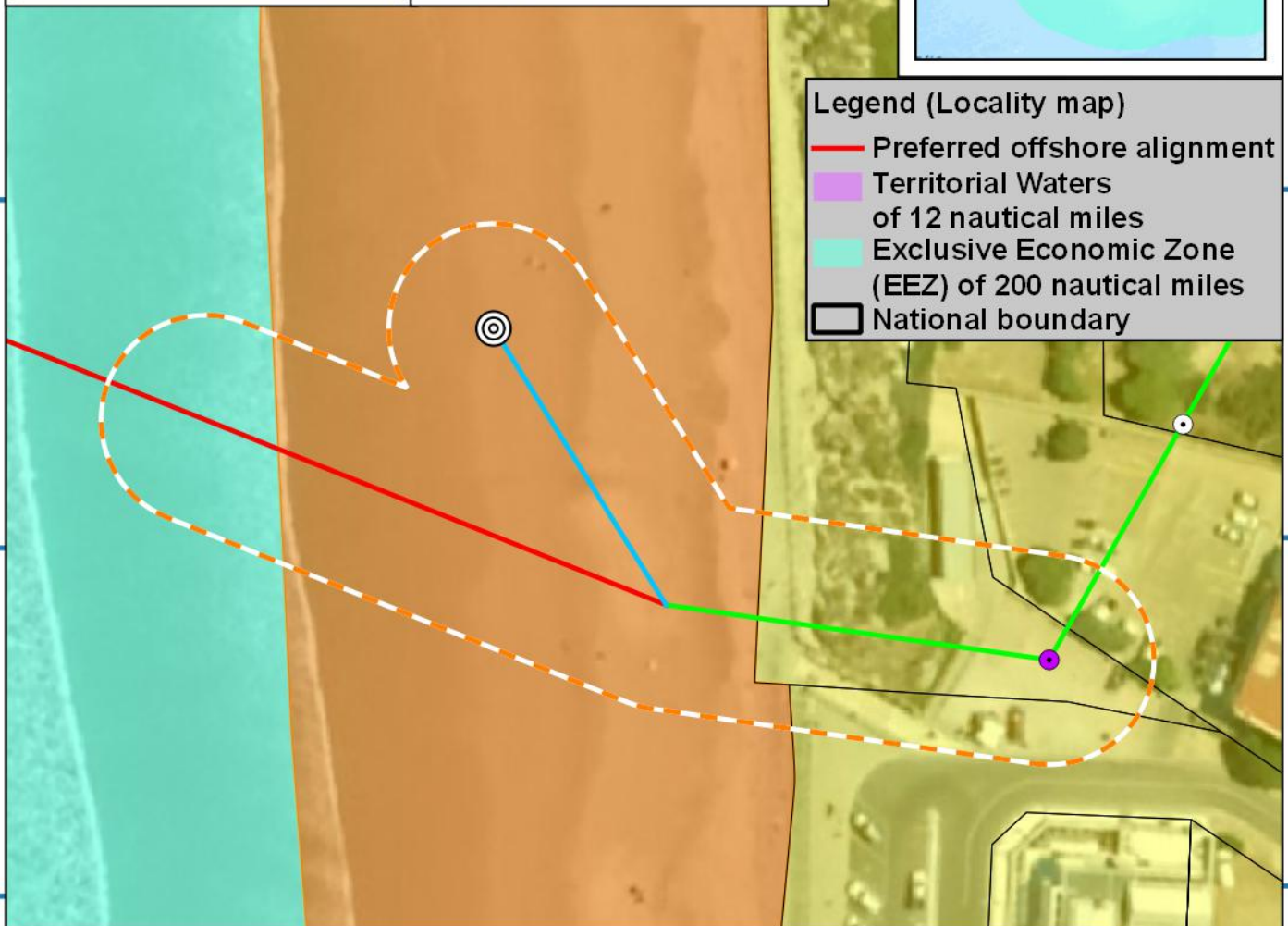
33°20.389'S

33°20.416'S



**Legend (Locality map)**

- Preferred offshore alignment
- Territorial Waters of 12 nautical miles
- Exclusive Economic Zone (EEZ) of 200 nautical miles
- National boundary



**Legend (Main map)**

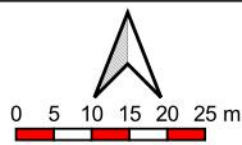
- Alternative 1 - WACS BMH
- Alternative 2 - BMH
- ◎ Sea Earth plate
- Alternative 1- Existing WACS Front haul
- Preferred offshore alignment
- Sea Earth route
- Construction footprint
- Affected cadastral
- State land
- Maritime Cultural Zone (MCZ) of 24 nautical miles

18°9.592'E      18°9.619'E      18°9.646'E      18°9.673'E      18°9.700'E

Mapping and layout by



For Giles Churchill



1:1000

when printed at A4 (297 x 210 mm)

Date of print: 06 Jul 2021

Co-Ordinate system  
 Projection: Transverse Mercator  
 Datum: Hartebeeshoek 1994  
 Ellipsoid: WGS84  
 Meridian: Lo19°  
 Units: Metres

Distance notes

1 nautical mile = 1.852km

1km = 0.539957km

**2AFRICA Landing**

**Yzerfontein**

**Onshore alignment with alternatives, landing point, Sea plate information and construction footprint**