

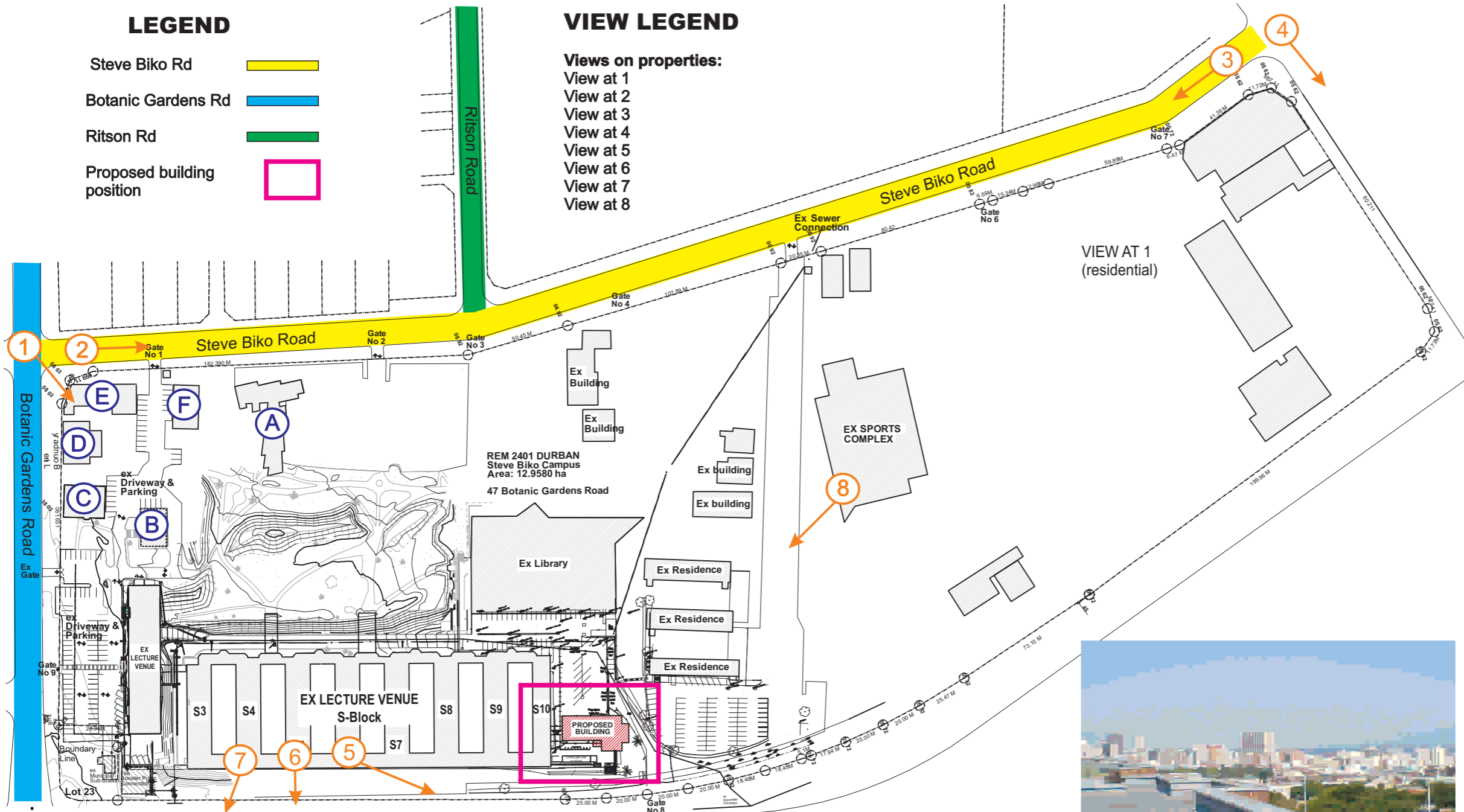
**LEGEND**

- Steve Biko Rd
- Botanic Gardens Rd
- Ritson Rd
- Proposed building position

**VIEW LEGEND**

**Views on properties:**

- View at 1
- View at 2
- View at 3
- View at 4
- View at 5
- View at 6
- View at 7
- View at 8



VIEW AT 1  
(Building E - Existing un-changed office)



VIEW AT 2  
(Down Steve Biko Rd)



VIEW AT 5  
(From above the S-Block and across the N3 highway)



VIEW AT 3  
(Steve Biko and )



VIEW AT 8  
(Ariel view from above)



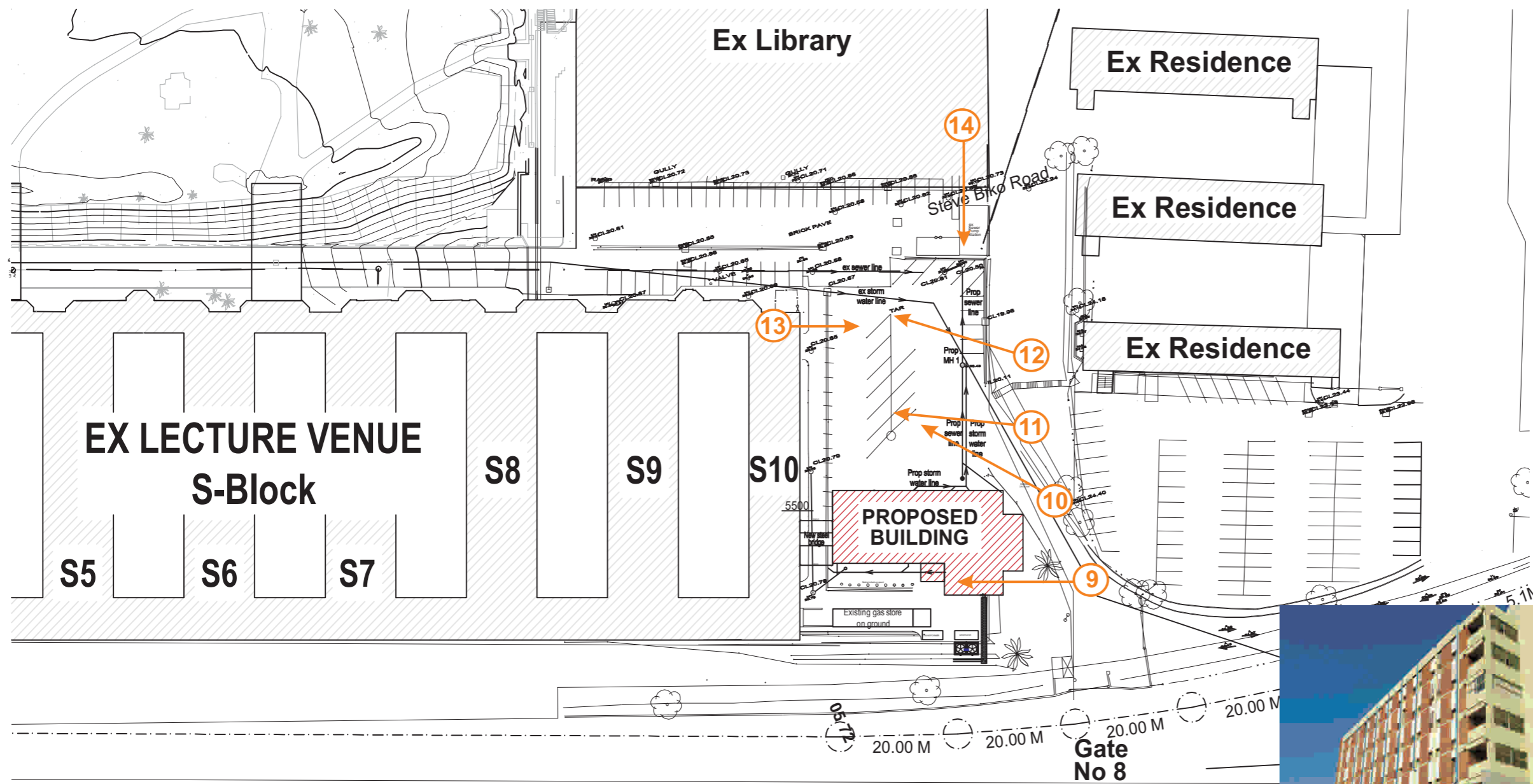
VIEW AT 7  
(From above the S-Block and across the N3 highway)



VIEW AT 6  
(From above the S-Block and across the N3 highway)



VIEW AT 4  
(residential at Hoylake Drive)



VIEW AT 9  
(Position of proposed building)



VIEW AT 10



VIEW AT 11



VIEW AT 12

VIEW AT 14  
(from the existing library)



DETAILED SITE PLAN  
Scale : NTS

**VIEW LEGEND**

- Views on properties:**  
 View at 9  
 View at 10  
 View at 11  
 View at 12  
 View at 13  
 View at 14

VIEW AT 13



NEIGHBOURING BUILDINGS ON SITE, 47 BOTANIC GARDENS RD

