



**SUSTAINPOWER**

---

# Gas to Power Solutions

SustainPower offers containerised, high-quality, durable solutions for sustainable power and heat generation using biogas, landfill gas and natural gas.



# SUSTAINPOWER DELIVERS GAS TO POWER SOLUTIONS

Cape Town-based SustainPower designs and manufactures high-quality, rugged containerised gas gensets and cogeneration equipment, using market-leading components and technology.

Africa-proof design, paired with comprehensive service contracts, and extensive spare parts availability, ensures highest up-time and longevity.

## BIOGAS

Combined heat and power (CHP) systems generating electricity and hot water from biogas.



## NATURAL GAS

Continuous power supply and CHP solutions using pipeline gas and CNG.



## GAS POWERED STANDBY

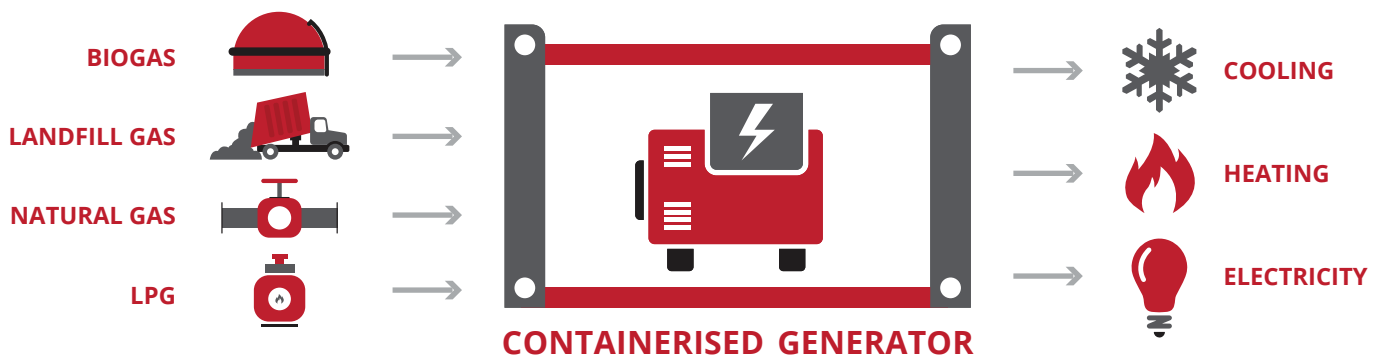
Residential, small business and industrial standby power from natural gas and LPG.



# COMBINED HEAT AND POWER (CHP)

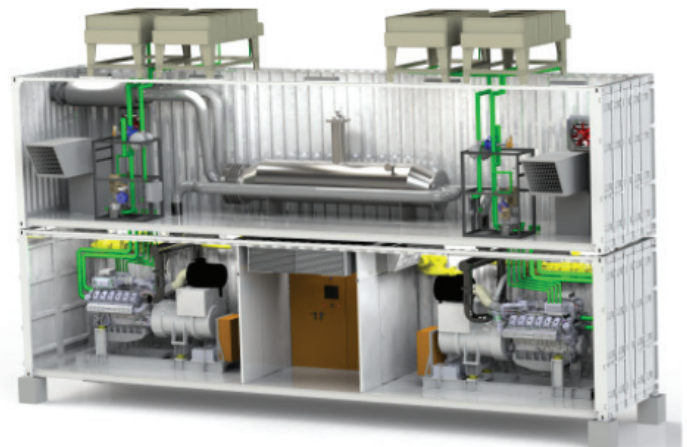
Combined Heat and Power generation, also known as cogeneration, is a highly efficient power generation process, which utilises approximately 90% of the energy contained in a gaseous fuel. Using heat exchangers, the

high efficiency is reached by harvesting the mechanical energy from the generator and the thermal energy from the combustion process. The harvested heat can also be converted into cooling for refrigeration.



## GAS GENERATORS AND COMBINED HEAT AND POWER (CHP) PLANTS

Containerised gas gensets and CHPs from 100kW to 2MW producing hot water, steam, or cooling in addition to electricity.



### Technical Specifications:

- Rugged product design for maximised mobility, protection and durability.
- Compact containerisation of up to 550kW in 20ft container.
- Twin Pack double engine design for up to 1.1MW in 40ft container.
- MAN gas engines power output from 100 kW to 550kW per engine.
- Market-leading MOTORTECH ignition controller, gas mixer and CHP management system.
- Engine cooling and heat recovery system installed on top or inside of the container.
- 24-Month warranty on MAN engines. 12-Month warranty on all other components.

*1.1MW Twin Pack gas CHP with steam generator*

### Optional Features:

- CHP with additional exhaust heat exchanger for maximum heat recovery.
- Sound attenuation and container fit-out per customer requirements.
- Turnkey solutions including gas treatment and grid connection.
- Operations and Maintenance option including Lifecycle Service Plan.
- Equipment rental and rent-to-own financing available.



# STANDBY GAS POWER BUSINESS, INDUSTRIAL & RESIDENTIAL

## BEST-IN-CLASS PRAMAC STANDBY GAS GENERATORS

Given the serious harm being caused to small and medium-sized businesses by load-shedding, this range of standby gas-powered gensets for residences, SME's, and larger businesses is the silent, clean, low maintenance standby power alternative to dirty diesel. These standby units can run on LPG or natural gas and range from 8kVA through 20kVA 3-phase. PRAMAC gas standby generators are best used in:

- Hotels, restaurant, and guesthouses;
- Small and medium size businesses;
- Residential estates and individual homes.

## THE #1 CHOICE IN STANDBY POWER

- Clean and quiet standby power.
- Connects to the existing gas source being used for cooking, heating, etc.
- Mobile phone app allows you to track run-time and maintenance intervals with ease.
- True Power™ Technology delivers best-in-class power quality.
- The Generac G-Force Engines are purpose-built, pressure-lubricated engines capable of handling the rigors of generator use, resulting in power that's more reliable and requiring less routine maintenance than any competitive engine.
- Automatic backup power means your home and business are always protected - even when you're away.
- Options come in liquefied petroleum gas (LPG) or natural gas. The direct connection means never dealing with carrying diesel or petrol cans again.
- 5-Year Limited Warranty for automatic standby generators.

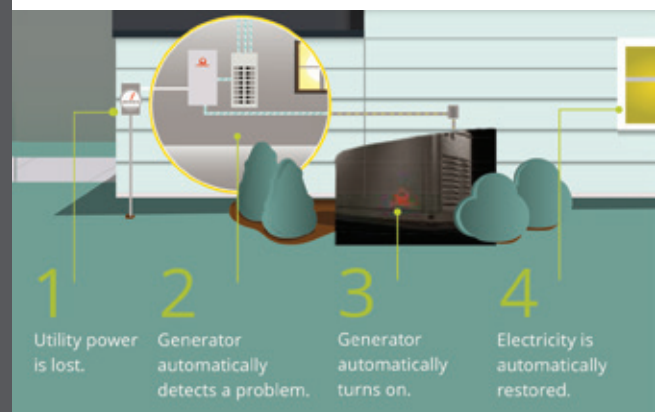
## IN CASE OF BLACKOUT OUR ENERGY SAVES YOUR BUSINESS!

If your power goes out, your generator comes on - automatically. It's really that simple. The generator system consists of a generator and transfer switch. The generator sits outside of your home or business just like a central air conditioner, while the transfer switch is located next to the main breaker box, and in some cases replaces it entirely.



## TOUGH. DURABLE. RELIABLE POWER.

Generators are often required to run for hours, days or even weeks at a time. Continuous use can cause a lot of strain on engines not specifically engineered to withstand extended run times. We have developed robust engine solutions to ensure our generators provide the reliability necessary to power through even the most demanding situations.



# PROJECTS



## EFFLUENT WATER TREATMENT

- Large, effluent treatment plant producing up to 3000m<sup>3</sup> of high grade biogas per day
- Continuous operation
- 440kW electrical output
- Delivered on time and under budget



## ORGANIC WASTE TO ENERGY

- Waste material from large abattoir processing 3000 head per day
- 220kW Combined Heat and Power (CHP)
- Converting biogas to electricity and hot water
- Eliminates the need for hazardous landfill waste

---

# WORK WITH US

## THINKING INSIDE THE BOX

Multiple sustainable power solutions

Our use of containerisation allows for multiple power solutions such as solar containers, water purification plants, battery banks, gas conditioning and other solutions to suit customer requirements.

## TOUGH PACKAGES

Containers built for any environment

We supply rugged power generation containers for ease of transportation, simplified commissioning, and the highest equipment protection standards.

## CUSTOMER FIRST

Commitment to service excellence

Customer satisfaction is at the forefront of everything we do. We provide an international network of service crews and reliable spare parts availability.

## STRATEGIC PARTNERSHIPS

Giving you every possible advantage

We have formed strategic partnerships with leading local and international technology partners, thus ensuring a superior product, unsurpassed service capability, excellent warranties and spare parts availability.

## LEAN AND MEAN

State-of-the-art production system

We implement standardised, lean product development and manufacturing processes, ensuring best quality and cost effectiveness.

## LOCAL IS LEKKER

First class, Made in SA

We implement South African design, engineering, assembly, fabrication and commissioning using world-class suppliers offering technical support and product warranties.

## TECHNOLOGY PARTNERS



[www.man-engines.com](http://www.man-engines.com)

- MAN engines are developed specifically for natural and special gas applications.
- MAN is the industry leader in reliability and energy efficiency.
- Designed for combined heat and power generation, MAN offers low pollution, natural gas and special gas engines ranging from 37kW to 550kW.
- MAN high-speed gas engines come with a 24 month, 10 000 hour factory warranty.
- MAN gas engines have proven themselves through their ruggedness, and high performance in peak-load and continuous operation.
- With long service intervals and service life, MAN gas engines ensure low total cost of ownership.



[www.pramac.com](http://www.pramac.com)

- PRAMAC produces and sells power generation systems and material handling equipment and has built a worldwide presence.
- PRAMAC was established in 1966 and is since headquartered in Siena, Italy. Since 2016 PRAMAC is part of the global leader in power generation, Generac Holdings from USA.
- The company offers solutions in stationary and mobile power generators for a variety of commercial and industrial applications as well as portable generators for numerous residential, light construction and recreational purposes.
- PRAMAC's power division offers traditional diesel and petrol generator sets but also developed specific competences in cleaner energy options such as natural gas, LPG and other alternative fuels.



[www.uniquegroup.com](http://www.uniquegroup.com)

Unique Group is among the world's prominent integrated subsea and offshore solution providers. Specialists in design and manufacturing of complex systems, packaged in modular and containerised solutions for the marine, diving, and energy market sectors. Contribution to SustainPower:

- Product design and engineering.
- Custom-built container fabrication ready for genset installation.
- Assembly of water system, heat recovery, cooling circuits, gas train and electrical installation including switch gear and CHP controls.
- Product financing such as rent-to-own options and complete project funding.



[www.motortech.de](http://www.motortech.de)

- MOTORTECH GmbH was founded in 1988 in Celle near Hanover. Initially it was just a service and trade enterprise, which specialized in engine replacement parts and stationary gas engine accessories.
- Today, the company is among the most efficient system suppliers in this industry and offers customers throughout the world a complete product range for all popular gas engines.
- In 2017, MOTORTECH was acquired by GENERAC Holdings from USA.
- A number of MOTORTECH in-house developments increase the operational safety, provide better environmental impact, longer intervals between maintenance, a longer overall life, and thus higher cost-effectiveness of gas engines.