

SECTION F: APPENDICES

Basic Assessment for the Proposed Construction and Operation of Electrical Grid Infrastructure to support the Sutherland Wind Energy Facility (WEF), Northern and Western Cape Provinces (Sutherland WEF – Electrical Grid Infrastructure): BASIC ASSESSMENT REPORT

BASIC ASSESSMENT REPORT

APPENDIX E: PUBLIC PARTICIPATION

contents

| | | |
|--------------|--|----|
| Appendix E.1 | Proof of Placement of Newspaper Advertisements and Site Notice Board _____ | 2 |
| Appendix E.2 | Correspondence Sent to I&APs, Stakeholders and Stakeholders _____ | 13 |
| Appendix E.3 | Comments and Response Report _____ | 14 |
| Appendix E.4 | Database of I&APs and Organs of State _____ | 15 |
| Appendix E.5 | Copies of Comments Received and Minutes of Meetings _____ | 26 |

SECTION F: APPENDICES

Basic Assessment for the Proposed Construction and Operation of Electrical Grid Infrastructure to support the Sutherland, Sutherland 2 and Rietrug Wind Energy Facilities (WEFs), Northern and Western Cape Provinces: DRAFT BASIC ASSESSMENT REPORT

Appendix E.1 Proof of Placement of Newspaper Advertisements and Site Notice Board

Note from the CSIR: The proof of placement of the Newspaper Advertisements (i.e. tear sheets) will be included in the finalised BA Report for submission to the DEFF. Nevertheless, the text that has been included in the Newspaper Advertisements is provided below.

Release of Draft BA Report for 30-day comment period: Text included in the Newspaper Advertisement – The Cape Times (English)

NOTICE OF BASIC ASSESSMENT (BA) PROCESS: THE PROPOSED CONSTRUCTION AND OPERATION OF ELECTRICAL GRID INFRASTRUCTURE TO SUPPORT THE PROPOSED SUTHERLAND, SUTHERLAND 2 AND RIETRUG WIND ENERGY FACILITIES, NEAR SUTHERLAND IN THE NORTHERN CAPE AND WESTERN CAPE PROVINCES

Notice is hereby given of the proposed development of Electrical Grid Infrastructure, including a 132 kV power line (approximately 41 km long), a 400 kV power line (approximately 4 km long), service roads and a Major Transmission Substation (MTS) (covering an area of approximate 16 Ha) to support three separately authorised Wind Energy Facilities (WEFs), namely the Sutherland, Sutherland 2 and Rietrug WEFs, near Sutherland, in the Northern and Western Cape provinces. The Applicant is South Africa Mainstream Renewable Power Developments (Pty) Ltd.

Notice of this proposed project is given in terms of the National Environmental Management Act (Act 107 of 1998, as amended) (NEMA) and the 2014 Environmental Impact Assessment (EIA) Regulations (as amended), under regulation 41 (2) (a). Notice is also given in terms of the National Heritage Resources Act (Act 25 of 1999).

The proposed Electrical Grid Infrastructure is located within the gazetted Central Power Corridor and Komsberg Renewable Energy Development Zone (REDZ 2). In line with the gazetted process for projects located within the Power Corridors, the proposed project will be subject to a **Basic Assessment (BA)** process instead of a full Scoping and EIA process in terms of the NEMA and the 2014 EIA Regulations (as amended). The proposed Electrical Grid Infrastructure may potentially trigger the following listed activities: GN R327 Listing Notice (LN) 1: 11 (i), 12 (ii), 19, 27, 28 (ii); GN R325 LN 2: 9; GN R324 LN 3: 4, 12, 14. The Council for Scientific and Industrial Research (CSIR) (Minnelise Levendal) has been appointed as the Environmental Assessment Practitioner.

The Draft BA Report is being released for a 30-day comment period extending from **4 October 2019 to 4 November 2019**. Comments must be submitted to the CSIR on or before this date using the details provided below. A hard copy of the report is available at the Sutherland and Laingsburg Public Libraries. The report can also be downloaded from the following website (<https://www.csir.co.za/environmental-impact-assessment>). Comments received during the comment period will be recorded and addressed (as applicable) in the finalised report that will be submitted to the Competent Authority for decision-making (i.e. the National Department of Environment, Forestry and Fisheries).

Should you be interested in registering as an Interested and/or Affected Party (I&AP) and to provide comments on this proposed project, you are kindly requested to e-mail, fax or mail your name contact details, and comments to the EAP at CSIR: Minnelise Levendal; Postal address: PO Box 320, Stellenbosch, 7599; Fax: 021 888 2693 or e-mail: MLevendal@csir.co.za

SECTION F: APPENDICES

Basic Assessment for the Proposed Construction and Operation of Electrical Grid Infrastructure to support the Sutherland, Sutherland 2 and Rietrug Wind Energy Facilities (WEFs), Northern and Western Cape Provinces: DRAFT BASIC ASSESSMENT REPORT

Release of Draft BA Report for 30-day comment period: Text included in the Newspaper Advertisement – Die Burger and Noordwester (Afrikaans)

KENNISGEWING VAN 'N BASIESE OMGEWINGSIMPAK STUDIE PROSES VIR DIE VOORGESTELDE ONTWIKKELING VAN DIE ELEKTRIESE INFRASTRUKTUUR OM DIE GOEDGEKEURDE SUTHERLAND, SUTHERLAND 2 EN RIETRUG WIND ENERGIE FASILITEITE TE ONDERSTEUN, GELEË NABY SUTHERLAND IN DIE NOORD-KAAP EN WES-KAAP PROVINSIES

Kennis word hiermee gegee van die voorgestelde ontwikkeling van die elektriese infrastruktuur, insluitende 'n 132 kV kraglyn (ongeveer 41 km lank), 'n 400 kV kraglyn (ongeveer 4 km lank), diens paaie en 'n Hoof Transmissie Substasie ("Major Transmission Substation") (met 'n oppervlak van ongeveer 16 Ha). Hierdie elektriese infrastruktuur gaan ontwikkel word om die Sutherland, Sutherland 2 en Rietrug Wind Energie Fasiliteite te ondersteun naby Sutherland in die Noord en Wes-Kaap provinsies. Die Aansoeker is "South Africa Mainstream Renewable Power Developments (Pty) Ltd".

Kennis van die voorgestelde projek word gegee ingevolge die Nasionale Omgewingsbestuurswet (Wet 107 van 1998, soos gewysig) (NEMA) en die 2014 NEMA Omgewingsimpakstudie Regulasies, soos gewysig, onder regulasie 41 (2)(a). Kennis word ook gegee ingevolge die Wet op Nasionale Erfenis Bronne (Wet 25 van 1999).

Die voorgestelde elektriese infrastruktuur is geleë in die gepromulgeerde Sentraal Kraglyn Korridor ("Central Power Corridor") en in die Komsberg Hernubare Energie Ontwikkeling Sone (REDZ 2). In ooreenstemming met die gepromulgeerde proses vir projekte wat in die gepromulgeerde Korridor geleë is, is die projek onderhewig aan 'n **Basiese Omgewingsimpakstudie Proses** in plaas van 'n volle Omvangsbepaling-en Omgewingsevaluering (OIE) proses ("EIA") ingevolge NEMA en die 2014 NEMA Omgewingsimpakstudie Regulasies, soos gewysig. Die volgende gelyste aktiwiteite is van toepassing op die voorgestelde elektriese infrastruktuur projek: GN R327 Listing Notice (LN) 1: 11 (i), 12 (ii), 19, 27, 28 (ii); GN R325 LN 2: 9; GN R324 LN 3: 4, 12, 14. Die Wetenskaplike Nywerheids- en Navorsingsraad (WNNR) ("CSIR") (Minnelise Levendal) is aangestel as die omgewingspraktisyn om die proses te behartig.

Die Konsep Basiese Omgewingsimpakstudie word tans vrygestel vir 'n 30-dae kommentaar periode vanaf 4 Oktober 2019 tot 4 November 2019. Kommentaar moet gelewer word op of voor hierdie datum aan WNNR via die kontak besonderhede verskaf hieronder. 'n Harde kopie van die verslag is beskikbaar by the Sutherland en Laingsburg publieke biblioteke. Die verslag kan ook afgelaai word vanaf die volgende webtuiste (<https://www.csir.co.za/environmental-impact-assessment>). Kommentaar ontvang gedurende hierdie kommentaar periode sal ingesluit en geadresseer word (waar van toepassing) in die finale verslag wat ingedien sal word by die Nasionale Departement van Omgewingsake, Bosbou en Visserye "National Department of Environment, Forestry and Fisheries (DEFF), voorheen bekend as "DEA".

Sou u belangstel om te registreer as 'n Geïnteresseerde en/of Belanghebbende Party (G&BP), en om kommentaar op die voorgestelde projek te lewer, word u vriendelik versoek om u naam, kontakbesonderhede en kommentaar te stuur aan die Omgewingspraktisyn by die WNNR: Minnelise Levendal; Posadres: Posbus 320, Stellenbosch, 7599; Tel: 021 888 2495; Faks: 021 888 2693 of e-pos: MLevendal@csir.co.za.

SECTION F: APPENDICES

Basic Assessment for the Proposed Construction and Operation of Electrical Grid Infrastructure to support the Sutherland, Sutherland 2 and Rietrug Wind Energy Facilities (WEFs), Northern and Western Cape Provinces: DRAFT BASIC ASSESSMENT REPORT

Copy of the Site Notice Boards: English and Afrikaans

PUBLIC PARTICIPATION PROCESS FOR THE PROPOSED CONSTRUCTION AND OPERATION OF ELECTRICAL GRID INFRASTRUCTURE TO SUPPORT THE PROPOSED SUTHERLAND, SUTHERLAND 2 AND RIETRUG WIND ENERGY FACILITIES, NEAR SUTHERLAND IN THE NORTHERN CAPE AND WESTERN CAPE PROVINCES

South Africa Mainstream Renewable Power Developments (Pty) Ltd (hereinafter referred to as Mainstream) received three Amended Environmental Authorisations (EAs), dated 10 November 2016 (DEA Reference Numbers: 12/12/20/1782/1; 12/12/20/1782/2; and 12/12/20/1782/3), from the National Department of Environmental Affairs (DEA) (now operating as the Department of Environment, Forestry and Fisheries (DEFF)) to construct and operate the Sutherland Wind Energy Facility (WEF), Sutherland 2 WEF, and Rietrug WEF. The Applications for EA are currently being amended under a separate process. Mainstream proposes to develop Electrical Grid Infrastructure, including a 132 kV power line (approximately 41 km long), a 400 kV power line (approximately 4 km long), service roads and a Major Transmission Substation (MTS) (covering an area of approximate 16 Ha) to support the separately authorised abovementioned WEFs, near Sutherland, in the Northern and Western Cape provinces of South Africa. The proposed Electrical Grid Infrastructure is located within the Laingsburg and Karoo Hoogland Local Municipalities, which respectively fall within the Central Karoo and Namakwa District Municipalities, respectively.

The proposed Electrical Grid Infrastructure is located within the Central Power Corridor and Komsberg Renewable Energy Development Zone (REDZ 2), which were formally gazetted in South Africa for the purpose of the development of large-scale transmission and distribution infrastructure, and solar and wind energy generation facilities. In line with the gazetted process for projects located within the gazetted Power Corridors, the proposed project will be subject to a Basic Assessment (BA) process instead of a full Scoping and Environmental Impact Assessment (EIA) process in terms of the National Environmental Management Act (Act 107 of 1998) (NEMA), as amended and the EIA Regulations of 2014 (as amended). The proposed Electrical Grid Infrastructure may potentially trigger the following listed activities: GN R327 Listing Notice (LN) 1: 11 (i), 12 (ii), 19, 27, 28 (ii); GN R325 LN 2: 9; GN R324 LN 3: 4, 12, 14. Please note that an application will be lodged with the South African Heritage Resources Agency (SAHRA) and Heritage Western Cape (HWC) in terms of the National Heritage Resources Act (Act 25 of 1999).

The Council for Scientific and Industrial Research (CSIR) has been appointed to undertake and manage the BA process for the proposed project on behalf of the project applicant. The respective farm portions affected and the relative location of the proposed project, as well as a description of the proposed and authorised project components are shown below.

Should you be interested in registering as an Interested and/or Affected Party (I&AP) and to provide comments on this proposed project, you are kindly requested to e-mail, fax or mail your name, contact details (preferred method of notification, e.g. e-mail address, fax number or postal address) with an indication of any direct business, financial, personal or other interest which you may have in the application to the Environmental Assessment Practitioner (EAP) at CSIR: Minnelise Levendal; Postal address: PO Box 320, Stellenbosch, 7599; Fax: 021 888 2693 or e-mail: MLevendal@csir.co.za

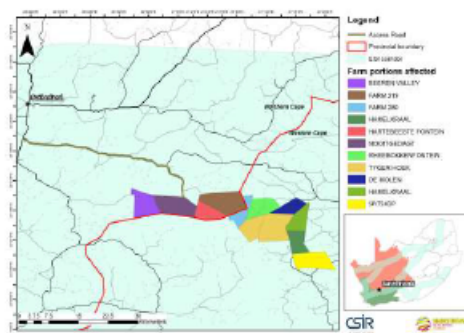


Figure A: Affected Farm Portions and Locality Map

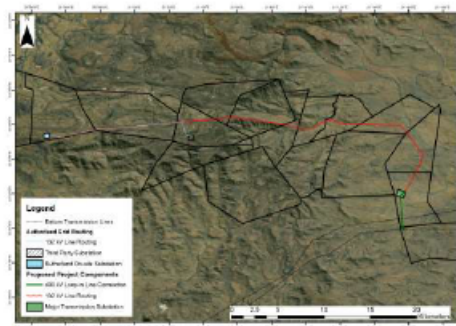


Figure B: Authorised and Proposed Project Components

SECTION F: APPENDICES

Basic Assessment for the Proposed Construction and Operation of Electrical Grid Infrastructure to support the Sutherland, Sutherland 2 and Rietrug Wind Energy Facilities (WEFs), Northern and Western Cape Provinces: DRAFT BASIC ASSESSMENT REPORT

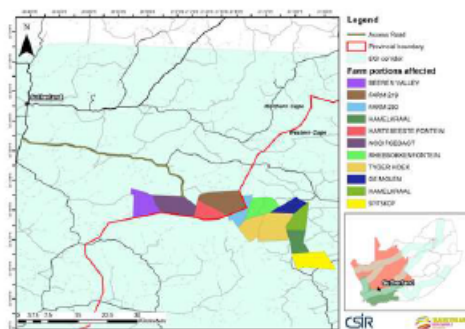
OPENBARE DEELNAME PROSES VIR DIE VOORGESTELDE ONTWIKKELING VAN DIE ELEKTRIESE INFRASTRUKTUUR OM DIE VOORGESTELDE SUTHERLAND, SUTHERLAND 2 EN RIETRUG WIND ENERGIE FASILITEITE TE ONDERSTEUN, GELEË NABY SUTHERLAND IN DIE NOORD-KAAP EN WES-KAAP PROVINSIES

South Africa Mainstream Renewable Power Developments (Pty) Ltd (hierna verwys na as "Mainstream") het drie Gewysigde Omgewingsgoedkeurings ("EAs"), gedateer 10 November 2016 (DEA Verwysings Nommers: 12/12/20/1782/1; 12/12/20/1782/2; en 12/12/20/1782/3), ontvang vanaf die Nasionale Departement van Omgewingsake ("DEA") vir die ontwikkeling van die Sutherland Wind Energie Fasiliteit (WEF), Sutherland 2 WEF, en Rietrug WEF. Hierdie Omgewingsgoedkeurings is tans onderworpe aan aparte Wysigings Aansoeke ("Amendment Applications"). Mainstream is van voorneme om die gepaardgaande elektriese infrastruktuur te installeer en te bedryf, insluitende 'n 132 kV kraglyn (ongeveer 41 km lank), 'n 400 kV kraglyn (ongeveer 4 km lank), diens pad en 'n Hoof Transmissie Substasie ("Major Transmission Substation") (met 'n oppervlak van ongeveer 16 Ha). Hierdie elektriese infrastruktuur gaan ontwikkel word om die bogenoemde goedgekeurde wind plase te ondersteun naby Sutherland in die Noord en Wes-Kaap provinsies. Die voorgestelde elektriese infrastruktuur is geleë in die Laingsburg en Karoo Hoogland Plaaslike Munisipaliteite, wat geleë is in die Sentraal-Karoo en Namakwa Distriksmunisipaliteite, onderskeidelik.

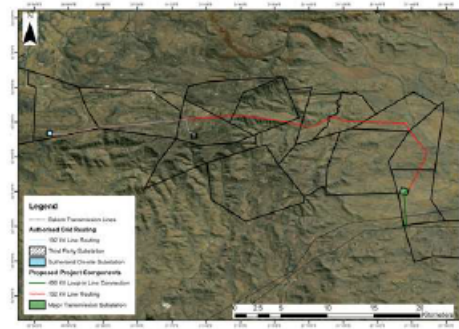
Die voorgestelde elektriese infrastruktuur is geleë in die Sentraal Kraglyn Korridor ("Central Power Corridor") en in die Komsberg Hernubare Energie Ontwikkeling Sone (REDZ 2), wat amptelik in Suid-Afrika gepromulgeer is met die doel om elektriese infrastruktuur, sowel as son en wind energie opwekkingsaanlegte op groot skaal te ontwikkel. In ooreenstemming met die gepromulgeerde prosedure vir projekte wat in die gepromulgeerde Korridor geleë is, is die projek onderhewig aan 'n Basiese Omgewingsimpakstudie Proses in plaas van 'n volle Omvangsbepaling en Omgewingsevaluering (OIE) proses ("EIA") ingevolge die Nasionale Omgewingsbestuurswet (Wet 107 van 1998, soos gewysig) (NEMA) en die 2014 NEMA Omgewingsimpakstudie Regulasies, soos gewysig. Die volgende gelyste aktiwiteite is van toepassing op die voorgestelde elektriese infrastruktuur projek: GN R327 Listing Notice (LN) 1: 11 (i), 12 (ii), 19, 27, 28 (ii); GN R325 LN 2: 9; GN R324 LN 3: 4, 12, 14. Let wel, 'n aansoek sal ook ingedien word by die Suid Afrikaanse Erfenis Bronne Genootskap ["South African Heritage Resources Agency (SAHRA)"] en by Erfenis Wes-Kaap "Heritage Western Cape" ingevolge die Wet op Nasionale Erfenis Bronne (Wet 25 van 1999).

Die Wetenskaplike Nywerheids- en Navorsingsraad (WNNR) ("CSIR") is aangestel om die omgewingsimpakstudie proses vir die voorgestelde projek te behartig en te bestuur namens die aansoeker. Die onderstaande figuur gee 'n aanduiding van die ligging van die voorgestelde projek, die geaffekteerde plase en 'n beskrywing van die goedgekeurde projek komponente.

Sou u belangstel om te registreer as 'n Geïnteresseerde en/of Belanghebbende Party (G&BP), en om kommentaar op die voorgestelde projek te lewer, word u vriendelik versoek om u naam en kontakbesonderhede (voorkeur van kommunikasie metode byv. e-pos, faks of pos), asook 'n aanduiding van enige direkte besigheid, finansiële, persoonlike of ander redes vir u belangstelling in die projek, te stuur aan die onafhanklike Omgewingspraktisyn by die WNNR: Minnelise Levendal; Posadres: Posbus 320, Stellenbosch, 7599; Tel: 021 888 2495; Faks: 021 888 2693 of e-pos: MLevendal@csir.co.za.



Figuur A: Ligging van projek en geaffekteerde plase

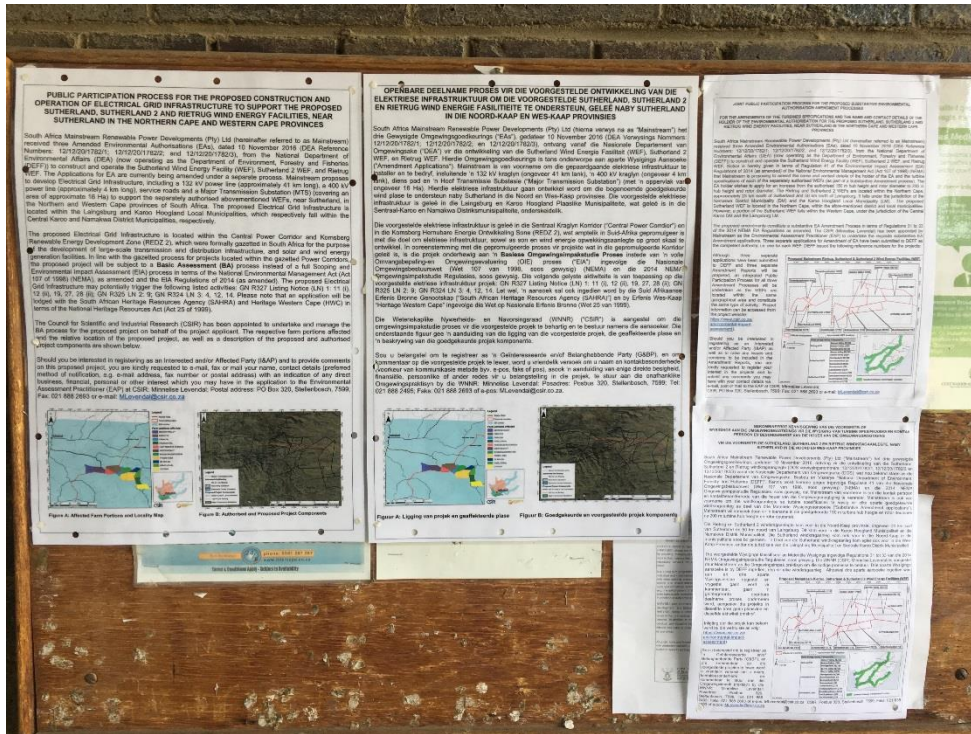


Figuur B: Goedgekeurde en voorgestelde projek komponente

SECTION F: APPENDICES

Basic Assessment for the Proposed Construction and Operation of Electrical Grid Infrastructure to support the Sutherland, Sutherland 2 and Rietrug Wind Energy Facilities (WEFs), Northern and Western Cape Provinces: DRAFT BASIC ASSESSMENT REPORT

Proof of Placement of Site Notice Boards: September 2019



Site Notice Board 1 (English and Afrikaans) placed at the Laingsburg Local Municipality Office (Municipal Notice Board), Western Cape.



Site Notice Board 2 (English and Afrikaans) placed at the Beaufort West Municipality Office and Public Library (Municipal Notice Board at the Entrance), Western Cape.

SECTION F: APPENDICES

Basic Assessment for the Proposed Construction and Operation of Electrical Grid Infrastructure to support the Sutherland, Sutherland 2 and Rietrug Wind Energy Facilities (WEFs), Northern and Western Cape Provinces: DRAFT BASIC ASSESSMENT REPORT



Site Notice Board 3 (English and Afrikaans) placed at the Muller General Dealer on Voortrekker Street in Merweville (at the Shop Entrance), Western Cape.



Site Notice Board 4 (English and Afrikaans) placed along the proposed 132 kV Power Line Route on Portion 6 of Farm Hamelkraal 16.

SECTION F: APPENDICES

Basic Assessment for the Proposed Construction and Operation of Electrical Grid Infrastructure to support the Sutherland, Sutherland 2 and Rietrug Wind Energy Facilities (WEFs), Northern and Western Cape Provinces: DRAFT BASIC ASSESSMENT REPORT



Site Notice Board 5 (English and Afrikaans) placed along the proposed 132 kV Power Line Route and Major Transmission Substation site on Portion 7 of Farm Hamelkraal 16.



Site Notice Board 6 (English and Afrikaans) placed along the proposed 400 kV Power Line Route near Remaining Extent of Spitskop Farm 20.

SECTION F: APPENDICES

Basic Assessment for the Proposed Construction and Operation of Electrical Grid Infrastructure to support the Sutherland, Sutherland 2 and Rietrug Wind Energy Facilities (WEFs), Northern and Western Cape Provinces: DRAFT BASIC ASSESSMENT REPORT



Site Notice Board 7 (English and Afrikaans) placed along the proposed 400 kV Power Line Route near Remaining Extent of Spitskop Farm 20.



Site Notice Board 8a (English and Afrikaans) placed at the Merweville – Sutherland Road R356 Gate.



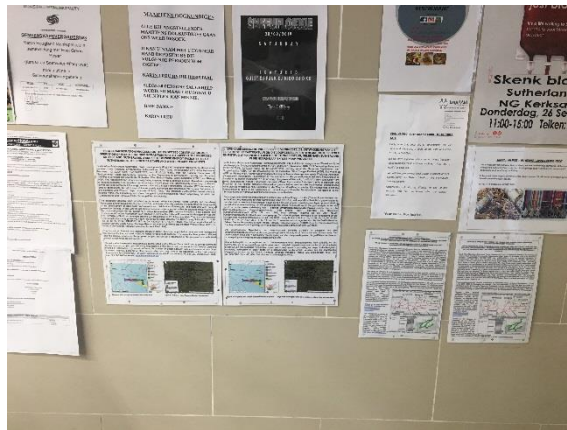
Site Notice Board 8b (English and Afrikaans) placed at the Merweville – Sutherland Road R356 Gate.

SECTION F: APPENDICES

Basic Assessment for the Proposed Construction and Operation of Electrical Grid Infrastructure to support the Sutherland, Sutherland 2 and Rietrug Wind Energy Facilities (WEFs), Northern and Western Cape Provinces: DRAFT BASIC ASSESSMENT REPORT



Site Notice Board 8c (English and Afrikaans) placed at the Merweville – Sutherland Road R356 Gate.



Site Notice Board 9 (English and Afrikaans) placed at the Sutherland OK Bazaar, Sutherland, Northern Cape.



Site Notice Board 10 (English and Afrikaans) placed at the Karoo Hoogland Local Municipality, Sutherland, Northern Cape.

SECTION F: APPENDICES

Basic Assessment for the Proposed Construction and Operation of Electrical Grid Infrastructure to support the Sutherland, Sutherland 2 and Rietrug Wind Energy Facilities (WEFs), Northern and Western Cape Provinces: DRAFT BASIC ASSESSMENT REPORT



Site Notice Board 11 (English and Afrikaans) placed at the boundary of the Sutherland WEF Site (Farm Entrance), Sutherland, Northern Cape.



Site Notice Board 12a (English and Afrikaans) placed at the boundary of the Rietrug WEF Site (Farm Entrance), Sutherland, Northern Cape.

SECTION F: APPENDICES

Basic Assessment for the Proposed Construction and Operation of Electrical Grid Infrastructure to support the Sutherland, Sutherland 2 and Rietrug Wind Energy Facilities (WEFs), Northern and Western Cape Provinces: DRAFT BASIC ASSESSMENT REPORT



Site Notice Board 12b (English and Afrikaans) placed at the boundary of the Rietrug WEF Site (Farm Entrance), Sutherland, Northern Cape.

SECTION F: APPENDICES

Basic Assessment for the Proposed Construction and Operation of Electrical Grid Infrastructure to support the Sutherland, Sutherland 2 and Rietrug Wind Energy Facilities (WEFs), Northern and Western Cape Provinces: DRAFT BASIC ASSESSMENT REPORT

Appendix E.2 Correspondence Sent to I&APs, Stakeholders and Stakeholders

Copies of Correspondence Sent to I&APs, Stakeholders and Organs of State for the Release of the Basic Assessment Report for I&AP Review (i.e. during the Project Initiation Phase)

Note from the CSIR: This appendix will be populated following the closure of the comment period on the Draft BA Report, and will be included in the finalised BA Report for submission to the DEFF.

SECTION F: APPENDICES

Basic Assessment for the Proposed Construction and Operation of Electrical Grid Infrastructure to support the Sutherland, Sutherland 2 and Rietrug Wind Energy Facilities (WEFs), Northern and Western Cape Provinces: DRAFT BASIC ASSESSMENT REPORT

Appendix E.3 Comments and Response Report

Note from the CSIR: The Comments and Responses Report will be populated following the closure of the comment period on the Draft BA Report, and will be included in the finalised BA Report for submission to the DEFF.

SECTION F: APPENDICES

Basic Assessment for the Proposed Construction and Operation of Electrical Grid Infrastructure to support the Sutherland, Sutherland 2 and Rietrug Wind Energy Facilities (WEFs), Northern and Western Cape Provinces: DRAFT BASIC ASSESSMENT REPORT

Appendix E.4 Database of I&APs and Organs of State

| Number | First Name and Surname | Company/ Organisation | Deregister interest | Automatically registered I&APs | Letter 1: Notice of Release of Consultation BA Reports | Comment on Consultation BA Reports | Email: Notice of Submission of BA Reports to DEA | Let 2: Notice of EA for BAs | Email 3: Outcome of Appeal Process |
|-------------------------------|-----------------------------|---|---------------------|--------------------------------|--|------------------------------------|--|-----------------------------|------------------------------------|
| AFFECTED LANDOWNERS | | | | | | | | | |
| 1. | Abrie De Wet | Remaining Extent of Beeren Valley Farm 150 (GVA Boerdery CC) - Project Landowner | | X | | | | | |
| 2. | Sybrand and Hannelie Burger | Remaining Extent of Nooitgedacht Farm 148 - Project Landowner | | X | | | | | |
| 3. | Andre Knoop | Remaining Extent of Hartbeesfontein Farm 147 - Project Landowner | | X | | | | | |
| 4. | Piet van Heerden | Portion 1 of Farm 219 (Eiendomme Beleggings PTY LTD) - Project Landowner | | X | | | | | |
| 5. | Arend de Waal | Remaining Extent of Farm 219, Farm 280, Portion 1 of Rheeboekfontein Farm 4, and Portion 2 of Rheeboekfontein Farm (Nova Vita Boerdery (PTY) Ltd) - Project Landowner | | X | | | | | |
| 6. | Charles Muller | Portion 2 of Farm de Molen 5 and Portion 7 of Hamelkraal 16 - Project Landowner | | X | | | | | |
| 7. | Abraham & Belia Muller | Portion 6 of Hamelkraal 16 - Project Landowner | | X | | | | | |
| 8. | Frans Bothma | Remainder of Farm Spitskop Portion 20 - Project Landowner | | X | | | | | |
| SURROUNDING LANDOWNERS | | | | | | | | | |
| 9. | Francois Conradie | Portion 2 and Remaining Extent of Farm 9 Boschmans Kloof | | X | | | | | |
| 10. | Abrie De Wet | Remaining Extent Botmanshoek RE/10; Portion 1/10 of Botmanshoek | | X | | | | | |
| 11. | Dawid & Tossie Muller | Portion 1 Schietfontein 1/179; Portion 1 of Tonteldoosfontein Farm 152; Portion 6/152 Tonteldoosfontein; Portion 1/178 Van Wykskraal; Portion 2/178 Van Wykskraal | | X | | | | | |

SECTION F: APPENDICES

Basic Assessment for the Proposed Construction and Operation of Electrical Grid Infrastructure to support the Sutherland, Sutherland 2 and Rietrug Wind Energy Facilities (WEFs), Northern and Western Cape Provinces: DRAFT BASIC ASSESSMENT REPORT

| Number | First Name and Surname | Company/ Organisation | Deregister interest | Automatically registered I&APs | Letter 1: Notice of Release of Consultation BA Reports | Comment on Consultation BA Reports | Email: Notice of Submission of BA Reports to DEA | Let 2: Notice of EA for BAs | Email 3: Outcome of Appeal Process |
|---|--|---|---------------------|--------------------------------|--|------------------------------------|--|-----------------------------|------------------------------------|
| 12. | Andreas & Lynette Muller | Portion 1 of Gunsfontein Farm 151 & Portion 2 of Gunsfontein Farm 151 | | X | | | | | |
| 13. | Ria Laynes | Portion 1 of Beeren Valley Farm 150 | | X | | | | | |
| 14. | Anna Catharina Du Plessis & Elbe du Toit | Portion 2 on Farm 144 (Vinke Kuil); Portion 3 of Farm 2 (Wilgebosch Kloof); Remaining Extent of Farm 143 | | X | | | | | |
| 15. | Thys Heyns | Remaining Extent of Farm 145 (Klippekraal) | | X | | | | | |
| 16. | Kobus le Roux | Portions 2 and 3 of farm 14 (Dwars Rivier), Farm 30 (Klipfontein Extension), Remaining extent of Farm 31 (Klipfontein), Portion 1 and remaining extent of Farm 7 Modderfontein; Remaining extent of Farm 30 (Klipfontein Extension) | | X | | | | | |
| 17. | Elias Nel Basson | Remaining Extent of Portugalsrivier Farm 218 | | X | | | | | |
| 18. | Cornelius Jacobus Symington | Portion 5 of Tonteldoosfontein Farm 152 & Remaining Extent of de Vreede Farm 133 | | X | | | | | |
| 19. | Albie Olivier Boliden PTY LTD | Portion 1 of Portugalsrivier Farm 218 | | X | | | | | |
| 20. | Andre Jordaan | Rogge Cloof Estate & Sutherland Space Port Manager | | X | | | | | |
| 21. | Ian & Becky | Komsberg Private Nature Reserve & Wild Life For All | | X | | | | | |
| 22. | Tommie Potgieter | Moyeng Consultant and Advisor Suurplaat Wind Energy Facility | | X | | | | | |
| AUTHORITIES (COMPETENT AUTHORITY AND PROVINCIAL AUTHORITY) | | | | | | | | | |
| 23. | Mr Muhammad Essop | Department of Environment, Forestry and Fisheries (DEFF) | | X | | | | | |
| 24. | Ms Milicent Solomons | DEFF | | X | | | | | |
| 25. | Mr StanleyTshitwamulomoni | DEFF - Biodiversity and Conservation Directorate | | X | | | | | |
| 26. | Ms Wilma Lutsch | DEFF - Biodiversity and Conservation Directorate | | X | | | | | |
| 27. | Mr Zaahir Toefy | Western Cape Department of Environmental Affairs and Development Planning (DEADP) | | X | | | | | |

SECTION F: APPENDICES

Basic Assessment for the Proposed Construction and Operation of Electrical Grid Infrastructure to support the Sutherland, Sutherland 2 and Rietrug Wind Energy Facilities (WEFs), Northern and Western Cape Provinces: DRAFT BASIC ASSESSMENT REPORT

| Number | First Name and Surname | Company/ Organisation | Deregister interest | Automatically registered I&APs | Letter 1: Notice of Release of Consultation BA Reports | Comment on Consultation BA Reports | Email: Notice of Submission of BA Reports to DEA | Let 2: Notice of EA for BAs | Email 3: Outcome of Appeal Process |
|-------------------------------|-----------------------------|--|---------------------|--------------------------------|--|------------------------------------|--|-----------------------------|------------------------------------|
| 28. | Ms Adri La Meyer | DEA&DP | | X | | | | | |
| 29. | Mr Danie Swanepoel | DEA&DP (Central Karoo) | | X | | | | | |
| 30. | Ms Tania De Waal | DEA&DP (Spatial Planning) | | X | | | | | |
| 31. | Mr Raudhiyah Dien | DEA&DP (Spatial Planning) | | X | | | | | |
| 32. | Mr Mandla Ndzilili | Northern Cape Department of Environment and Nature Conservation (DENC) | | X | | | | | |
| 33. | Ms Gale Letimela | DENC | | X | | | | | |
| 34. | Mr Tsholo Madaudi-Leburu | DENC | | X | | | | | |
| 35. | Mr Onwabile Ndzumo | DENC | | X | | | | | |
| 36. | Ms Elsabe Swart | DENC | | X | | | | | |
| 37. | Ms Nanine van Olmen | DENC | | X | | | | | |
| 38. | Mr Bryan Fisher | DENC | | X | | | | | |
| COMMENTING AUTHORITIES | | | | | | | | | |
| 39. | Mr Fabion Smith | National Department of Human Settlements, Water and Sanitation (DHSWS) (Previously Department of Water and Sanitation) | | X | | | | | |
| 40. | Ms Chantel Schwartz | National DHSWS | | X | | | | | |
| 41. | Ms Mashudu Kgaphola | National DHSWS | | X | | | | | |
| 42. | Mr Rashid Khan | DHSWS (Western Cape) | | X | | | | | |
| 43. | Ms Melissa Lintnaar-Strauss | DHSWS (Western Cape) | | X | | | | | |
| 44. | Mr Mosala Ntoi | DHSWS (Northern Cape) | | X | | | | | |
| 45. | Makhosi Mthimkhulu | Breede-Gouritz Catchment Management Agency | | X | | | | | |

SECTION F: APPENDICES

Basic Assessment for the Proposed Construction and Operation of Electrical Grid Infrastructure to support the Sutherland, Sutherland 2 and Rietrug Wind Energy Facilities (WEFs), Northern and Western Cape Provinces: DRAFT BASIC ASSESSMENT REPORT

| Number | First Name and Surname | Company/ Organisation | Deregister interest | Automatically registered I&APs | Letter 1: Notice of Release of Consultation BA Reports | Comment on Consultation BA Reports | Email: Notice of Submission of BA Reports to DEA | Let 2: Notice of EA for BAs | Email 3: Outcome of Appeal Process |
|--------|------------------------|---|---------------------|--------------------------------|--|------------------------------------|--|-----------------------------|------------------------------------|
| 46. | Andiswa Sam | Breede-Gouritz Catchment Management Agency | | X | | | | | |
| 47. | Ms Mary Jean Gabriel | Department of Agriculture, Land Reform and Rural Development (DALRRD) (Previously the Department of Agriculture, Forestry and Fisheries (DAFF)) | | X | | | | | |
| 48. | Ms Anneliza Collet | National DALRRD | | X | | | | | |
| 49. | Mr Andile Hawes | National DALRRD | | X | | | | | |
| 50. | Ms Mashudu Marubin | National DALRRD | | X | | | | | |
| 51. | Ms Jacoline Mans | DALRRD | | X | | | | | |
| 52. | Ms Thoko Buthelezi | DALRRD: AgriLand Liaison office | | X | | | | | |
| 53. | Mr Cor van der Walt | Western Cape Department of Agriculture | | X | | | | | |
| 54. | Ms Phyllis Pienaar | Western Cape Department of Agriculture | | X | | | | | |
| 55. | Mr Paul Herselman | Western Cape Department of Agriculture | | X | | | | | |
| 56. | Mr Ali Diteme | Northern Cape DALRRD | | X | | | | | |
| 57. | L. Manong | Northern Cape DALRRD | | X | | | | | |
| 58. | Mr Nico Toerien | Northern Cape DALRRD | | X | | | | | |
| 59. | Mpho Mabaso | Department of Energy (DoE): Director: Renewable Energies | | X | | | | | |
| 60. | Mr Solly Fourie | Department of Economic Development and Tourism: Head of Department | | X | | | | | |
| 61. | The Director General | National Department of Economic Development | | X | | | | | |
| 62. | Head of Department | Northern Cape Department of Economic Development and Tourism | | X | | | | | |
| 63. | Mr Luchen Reddy | Eskom: Department: Science & Technology | | X | | | | | |
| 64. | Duduzile Kunene | Department of Mineral Resources (Western Cape): Regional Manager | | X | | | | | |

SECTION F: APPENDICES

Basic Assessment for the Proposed Construction and Operation of Electrical Grid Infrastructure to support the Sutherland, Sutherland 2 and Rietrug Wind Energy Facilities (WEFs), Northern and Western Cape Provinces: DRAFT BASIC ASSESSMENT REPORT

| Number | First Name and Surname | Company/ Organisation | Deregister interest | Automatically registered I&APs | Letter 1: Notice of Release of Consultation BA Reports | Comment on Consultation BA Reports | Email: Notice of Submission of BA Reports to DEA | Let 2: Notice of EA for BAs | Email 3: Outcome of Appeal Process |
|--------|------------------------|--|---------------------|--------------------------------|--|------------------------------------|--|-----------------------------|------------------------------------|
| 65. | Mr Jacob Dikgang | Department of Transport | | X | | | | | |
| 66. | Mr Ben Welman | Western Cape Department of Transport and Public Works | | X | | | | | |
| 67. | Ms Jacqui Gooch | Western Cape Department of Transport and Public Works (Strategy, Planning and Co-ordination) | | X | | | | | |
| 68. | Mr Malcolm Watters | Western Cape Department of Transport and Public Works | | X | | | | | |
| 69. | Mr Jaco Roelofse | Northern Cape Department of Roads and Public Works (Roads) | | X | | | | | |
| 70. | Mr Denver van Heerden | Northern Cape Department of Roads and Public Works | | X | | | | | |
| 71. | P. Mguza | Northern Cape Department of Transport, Safety and Liaison (Transport Operations) | | X | | | | | |
| 72. | Mr Colin Fordham | CapeNature | | X | | | | | |
| 73. | Ms Alana Duffel-Canham | CapeNature | | X | | | | | |
| 74. | Mr Andrew September | Heritage Western Cape | | X | | | | | |
| 75. | Ms Colette Scheermeyer | Heritage Western Cape | | X | | | | | |
| 76. | Mr Zwelibanzi Shiceka | Heritage Western Cape (Assistant Director) | | X | | | | | |
| 77. | Ms Natasha Higgitt | SAHRA | | X | | | | | |
| 78. | Mr Lucky Legodi | DALRRD | | X | | | | | |
| 79. | Mr Gerhard De Bruin | DALRRD | | X | | | | | |
| 80. | Mr Itumeleng Thatelo | South African Local Government Association (SALGA) (Northern Cape) | | X | | | | | |
| 81. | Mr Chantal Harigobin | SALGA (Western Cape) | | X | | | | | |
| 82. | Herman Coetzee | Transnet: Radio Communication Department | | X | | | | | |
| 83. | Devon Govender | Department (Cape Town) | | X | | | | | |

SECTION F: APPENDICES

Basic Assessment for the Proposed Construction and Operation of Electrical Grid Infrastructure to support the Sutherland, Sutherland 2 and Rietrug Wind Energy Facilities (WEFs), Northern and Western Cape Provinces: DRAFT BASIC ASSESSMENT REPORT

| Number | First Name and Surname | Company/ Organisation | Deregister interest | Automatically registered I&APs | Letter 1: Notice of Release of Consultation BA Reports | Comment on Consultation BA Reports | Email: Notice of Submission of BA Reports to DEA | Let 2: Notice of EA for BAs | Email 3: Outcome of Appeal Process |
|-----------------------|------------------------|---|---------------------|--------------------------------|--|------------------------------------|--|-----------------------------|------------------------------------|
| 84. | Nicole Abrahams | SANRAL (Environmental coordinator) | | X | | | | | |
| 85. | Colene Runkel | SANRAL (Northern Cape-Western region) | | X | | | | | |
| 86. | René de Kock (WR) | SANRAL | | X | | | | | |
| 87. | Mr Gawie Bestbier | Civil Aviation Authority (CAA) | | X | | | | | |
| 88. | Ms Lizell Stroh | CAA | | X | | | | | |
| 89. | Ms Chinga Mazhetese | CAA | | X | | | | | |
| 90. | Mr John Geeringh | Senior Consultant Environmental Management: Eskom GC: Land Development & EIA Review | | X | | | | | |
| 91. | Mr Owen Peters | Eskom: Land and Development | | X | | | | | |
| 92. | Mr Elroy Saaynan | Eskom Holdings Limited | | X | | | | | |
| 93. | Ms Andrea Van Gensen | Eskom Holdings Limited | | X | | | | | |
| 94. | Mr Luchen Reddy | Eskom Holdings Limited (Liaison to Department of Science and Technology) | | X | | | | | |
| 95. | Ms Justine Wyngaardt | Eskom Holdings Limited (Distribution - Western Operating Unit) | | X | | | | | |
| 96. | Ms Ambrose Hector | Eskom (in charge of Kappa / Brandkop) | | X | | | | | |
| 97. | Mr Andre Crous | Eskom Holdings Limited (Telecommunications) | | X | | | | | |
| 98. | Mr Fanie Berg | Eskom Holdings Limited (Senior Engineer) | | X | | | | | |
| MUNICIPALITIES | | | | | | | | | |
| 99. | Stefanus Jooste | Central Karoo District Municipality: Municipal Manager | | X | | | | | |
| 100. | J. Venter | Laingsburg Local Municipality: Head of Technical Department | | X | | | | | |
| 101. | Ms Winnie Miles | Laingsburg Local Municipality (PA to Municipal Manager) | | X | | | | | |

SECTION F: APPENDICES

Basic Assessment for the Proposed Construction and Operation of Electrical Grid Infrastructure to support the Sutherland, Sutherland 2 and Rietrug Wind Energy Facilities (WEFs), Northern and Western Cape Provinces: DRAFT BASIC ASSESSMENT REPORT

| Number | First Name and Surname | Company/ Organisation | Deregister interest | Automatically registered I&APs | Letter 1: Notice of Release of Consultation BA Reports | Comment on Consultation BA Reports | Email: Notice of Submission of BA Reports to DEA | Let 2: Notice of EA for BAs | Email 3: Outcome of Appeal Process |
|---|------------------------|--|---------------------|--------------------------------|--|------------------------------------|--|-----------------------------|------------------------------------|
| 102. | Ms Magie Bobbejee | Laingsburg Local Municipality Ward 1 Councilor (Laingsburg) | | X | | | | | |
| 103. | Pietie Williams | Laingsburg Local Municipality: Municipal Manager | | X | | | | | |
| 104. | Ms Sandra Isaacs | Karoo Hoogland Local Municipality | | X | | | | | |
| 105. | Mr Jannie Fortuin | Karoo Hoogland Local Municipality (Municipal Manager) | | X | | | | | |
| 106. | Mr Allistar Gibbons | Karoo Hoogland Local Municipality (Sutherland Office) | | X | | | | | |
| 107. | Mr Jeremy Davids | Karoo Hoogland Local Municipality (Councillor Ward 4)) | | X | | | | | |
| 108. | Mr Chris Fortuin | Namakwa District Municipality (Municipal Manager) | | X | | | | | |
| NPOs, NGO, OTHER ORGANISATIONS AND I&APS | | | | | | | | | |
| 109. | Phillip De Lange | ATNS: Manager of Western and Northern Cape | | X | | | | | |
| 110. | Johan Koegelenberg | Sentech Broadcast Coverage Planner: RF Networks. Manager: Measurements and GIS | | X | | | | | |
| 111. | Mr Frank Creese | Sentech Inc. (Senior TCC Manager: Operations and Maintenance - Western Region) | | X | | | | | |
| 112. | Mr. Serame Motlhake | Network Planning Manager | | X | | | | | |
| 113. | Alisha Pretorius | Sentech | | X | | | | | |
| 114. | Anne Flynn | Falcon Oil and Gas Ltd | | X | | | | | |
| 115. | Coert Smit | BreedeNet: Network Operations Director | | X | | | | | |
| 116. | Ferdi Smit | System Specialist Radar, Technical Services Cape Town International Airport | | X | | | | | |
| 117. | Stakeholder | Altech Fleetcall | | X | | | | | |
| 118. | Stakeholder | Altech Netstar | | X | | | | | |
| 119. | Andre Crous | Eskom Telecommunications | | X | | | | | |
| 120. | Danie Erasmus | Police Radio Communications, SA Police | | X | | | | | |

SECTION F: APPENDICES

Basic Assessment for the Proposed Construction and Operation of Electrical Grid Infrastructure to support the Sutherland, Sutherland 2 and Rietrug Wind Energy Facilities (WEFs), Northern and Western Cape Provinces: DRAFT BASIC ASSESSMENT REPORT

| Number | First Name and Surname | Company/ Organisation | Deregister interest | Automatically registered I&APs | Letter 1: Notice of Release of Consultation BA Reports | Comment on Consultation BA Reports | Email: Notice of Submission of BA Reports to DEA | Let 2: Notice of EA for BAs | Email 3: Outcome of Appeal Process |
|--------|------------------------|---|---------------------|--------------------------------|--|------------------------------------|--|-----------------------------|------------------------------------|
| 121. | Mr Abel Hanekom | Supervisor Police Radio Communications | | X | | | | | |
| 122. | Lt Colonel A. De Reuck | South African Police Service (SAPS) (Police Radio Communications) | | X | | | | | |
| 123. | Stakeholder | Department of Defence/ SA Army | | X | | | | | |
| 124. | Stakeholder | Department of Defence/ SA Army | | X | | | | | |
| 125. | Colonel Loy de Jager | Department of Defence/ SA Army | | X | | | | | |
| 126. | Phillip De Lange | Manager: Technical Support, Technical Services, Cape Town International Airport | | X | | | | | |
| 127. | Ms Stephanie Kot | African Clean Energy Developments (ACED) | | X | | | | | |
| 128. | Mr Henning Myburgh | Agri Northern Cape | | X | | | | | |
| 129. | Mr Carl Opperman | Agri Western Cape | | X | | | | | |
| 130. | Mr Japie Grobler | AgriSA | | X | | | | | |
| 131. | Mr Nic Opperman | AgriSA | | X | | | | | |
| 132. | Mr Ferdi Smit | Air Traffic and Navigation Services (ATNS) (System Specialist Radar / Technical Services Cape Town International Airport) | | X | | | | | |
| 133. | Mr Johan Schoeman | Altech Fleetcall | | X | | | | | |
| 134. | Mr Frans Swart | Altech Netstar | | X | | | | | |
| 135. | Mr Michael Barnes | Biotherm Energy | | X | | | | | |
| 136. | Ms Tania Anderson | BirdLife South Africa | | X | | | | | |
| 137. | Mr Simon Gear | Birdlife South Africa | | X | | | | | |
| 138. | Ms Samantha Ralston | Birdlife South Africa (Western Region) | | X | | | | | |
| 139. | Mr Coert Smit | Breedenet: Network Operations | | X | | | | | |

SECTION F: APPENDICES

Basic Assessment for the Proposed Construction and Operation of Electrical Grid Infrastructure to support the Sutherland, Sutherland 2 and Rietrug Wind Energy Facilities (WEFs), Northern and Western Cape Provinces: DRAFT BASIC ASSESSMENT REPORT

| Number | First Name and Surname | Company/ Organisation | Deregister interest | Automatically registered I&APs | Letter 1: Notice of Release of Consultation BA Reports | Comment on Consultation BA Reports | Email: Notice of Submission of BA Reports to DEA | Let 2: Notice of EA for BAs | Email 3: Outcome of Appeal Process |
|--------|---------------------------|---|---------------------|--------------------------------|--|------------------------------------|--|-----------------------------|------------------------------------|
| 140. | Ms Vivien Kiewitz | Cell C Tele Communications | | X | | | | | |
| 141. | Mr Brian Joubert | Cell C Tele Communications | | X | | | | | |
| 142. | Head Office | Cell C Head Office | | X | | | | | |
| 143. | D. Ngwenya | Independent Communications Authority of South Africa (ICASA) | | X | | | | | |
| 144. | Ms Mona Lakhani | Earthlife Africa | | X | | | | | |
| 145. | Mabule Mokhine | Earthlife Africa | | X | | | | | |
| 146. | Mr Constant Hoogstad | Endangered Wildlife Trust | | X | | | | | |
| 147. | Christy B. | Endangered Wildlife Trust: Renewable Energy Project Manager | | X | | | | | |
| 148. | Mr Lourens Leeuwner | Endangered Wildlife Trust | | X | | | | | |
| 149. | Dr Harriet Davies-Mostert | Endangered Wildlife Trust (Wildlife and Energy Programme) | | X | | | | | |
| 150. | Ms Francisca Jansen | Laingsburg Public Library | | X | | | | | |
| 151. | Madre Walters | Laingsburg Tourism | | X | | | | | |
| 152. | The Director | Laingsburg Business Chamber | | X | | | | | |
| 153. | Ms Mercia Grimbeek | Mainstream Renewable Power Developments | | X | | | | | |
| 154. | Mr Charles Van Reenen | MTN - Innovation Centre Engineering | | X | | | | | |
| 155. | Mr Renier Nel | MTN South Africa Tele Communications | | X | | | | | |
| 156. | Mr Pieter Buys | National Energy Regulator of South Africa (NERSA) | | X | | | | | |
| 157. | Ms Sweetness Maletse | National Energy Regulator of South Africa (NERSA) | | X | | | | | |
| 158. | Mr Brian Dryer | Neotell Tele Communications | | X | | | | | |
| 159. | The Project Manager | Northern Cape Economic Development, Trade and Investment Promotion Agency | | X | | | | | |

SECTION F: APPENDICES

Basic Assessment for the Proposed Construction and Operation of Electrical Grid Infrastructure to support the Sutherland, Sutherland 2 and Rietrug Wind Energy Facilities (WEFs), Northern and Western Cape Provinces: DRAFT BASIC ASSESSMENT REPORT

| Number | First Name and Surname | Company/ Organisation | Deregister interest | Automatically registered I&APs | Letter 1: Notice of Release of Consultation BA Reports | Comment on Consultation BA Reports | Email: Notice of Submission of BA Reports to DEA | Let 2: Notice of EA for BAs | Email 3: Outcome of Appeal Process |
|--------|------------------------|--|---------------------|--------------------------------|--|------------------------------------|--|-----------------------------|------------------------------------|
| | | (NCEDA) - Agriculture | | | | | | | |
| 160. | Ms Sharon Steyn | Northern Cape Chamber of Commerce and Industry | | X | | | | | |
| 161. | Dr Warren Joubert | South African Weather Services | | X | | | | | |
| 162. | Mlungisi Ngwenya | South African Weather Services | | X | | | | | |
| 163. | Ms Lynne Hannay | Shell South Africa Exploration (Pty) Ltd | | X | | | | | |
| 164. | Dr Ramotholo Sefako | South African Astronomical Observatory (SAAO) (Cape Town & Sutherland) | | X | | | | | |
| 165. | Administration | SALT (The Southern African Large Telescope) | | X | | | | | |
| 166. | Ms Kate McEwan | South African Bat Assessment Association (SABAA) | | X | | | | | |
| 167. | Mr Chris Coetzee | Southern African Large Telescope (SALT) | | X | | | | | |
| 168. | Mr Ferdi Smit | Southern African Large Telescope (SALT) | | X | | | | | |
| 169. | Mavela Hlazo | Southern African Large Telescope (SALT) and South African Astrological Observatory (SAAO) (Sutherland) | | X | | | | | |
| 170. | Dr Adrian Tiplady | Square Kilometre Array South Africa (SKA) | | X | | | | | |
| 171. | Mr Tshegofatso Monama | Square Kilometre Array South Africa (SKA) | | X | | | | | |
| 172. | Ms Adriana Chickesh | Sustainable Energy Society of Southern Africa (SESSA) | | X | | | | | |
| 173. | Mr Henning Holm | Sustainable Energy Society of Southern Africa (SESSA) | | X | | | | | |
| 174. | Ms Ronel Cloete | Sutherland Public Library | | X | | | | | |
| 175. | Mr Keverne Thurling | Telkom Tele Communications | | X | | | | | |
| 176. | Mr Leonard Shaw | Telkom Tele Communications | | X | | | | | |
| 177. | Mr Johan Smit | Telkom Tele Communications (Executive/Senior Specialist Regulatory Affairs) | | X | | | | | |

SECTION F: APPENDICES

Basic Assessment for the Proposed Construction and Operation of Electrical Grid Infrastructure to support the Sutherland, Sutherland 2 and Rietrug Wind Energy Facilities (WEFs), Northern and Western Cape Provinces: DRAFT BASIC ASSESSMENT REPORT

| Number | First Name and Surname | Company/ Organisation | Deregister interest | Automatically registered I&APs | Letter 1: Notice of Release of Consultation BA Reports | Comment on Consultation BA Reports | Email: Notice of Submission of BA Reports to DEA | Let 2: Notice of EA for BAs | Email 3: Outcome of Appeal Process |
|--------------------------|----------------------------------|---|---------------------|--------------------------------|--|------------------------------------|--|-----------------------------|------------------------------------|
| 178. | Mr Craig Barnes | Vodacom South Africa Tele Communications | | X | | | | | |
| 179. | Mr Nico Fourie | Vodacom South Africa Tele Communications | | X | | | | | |
| 180. | Mr Danie Oosthuizen | Vodacom South Africa Tele Communications | | X | | | | | |
| 181. | Mr Abra Van Wyk | Sutherland Framers Association | | X | | | | | |
| 182. | Mr P Francois Theron | Komsberg Farmers Association | | X | | | | | |
| 183. | Mr Antonie Botes | Merweville Farmers Association | | X | | | | | |
| 184. | Mr Morgan Griffiths | Wildlife and Environmental Society of South Africa (WESSA) (Environmental Governance Programme) | | X | | | | | |
| 185. | Dr Morne Du Plessis | World Wide Fund South Africa | | X | | | | | |
| 186. | Mr Sharief Harris | Building Energy South Africa (PTY) Ltd | | X | | | | | |
| 187. | Ms Magdalena Kaaryna Michalowska | Building Energy South Africa (PTY) Ltd | | X | | | | | |
| 188. | Ms Veronique Fyfe | G7 Renewables (PTY) Ltd | | X | | | | | |
| 189. | Dr Joh Henschel | South African Environmental Observation Network (SAEON) | | X | | | | | |
| PROJECT APPLICANT | | | | | | | | | |
| 190. | Mr Eugene Marais | South Africa Mainstream Renewable Power Developments | | X | | | | | |
| 191. | Ms Gesie Theron | South Africa Mainstream Renewable Power Developments | | X | | | | | |
| 192. | Ms Rafeeqah Kamish | South Africa Mainstream Renewable Power Developments | | X | | | | | |

SECTION F: APPENDICES

Basic Assessment for the Proposed Construction and Operation of Electrical Grid Infrastructure to support the Sutherland, Sutherland 2 and Rietrug Wind Energy Facilities (WEFs), Northern and Western Cape Provinces: DRAFT BASIC ASSESSMENT REPORT

Appendix E.5 Copies of Comments Received and Minutes of Meetings

Note from the CSIR: The comments received will be populated following the closure of the comment period on the Draft BA Report, and will be included in the finalised BA Report for submission to the DEFF.