



**THE PROPOSED CONSTRUCTION OF AN 88KV PETRUSDAM
SWITCH STATION WITHIN RAMOTSHERE MOILOA LOCAL
MUNICIPALITY, NORTH WEST PROVINCE.**

July 2017

**ENVIRONMENTAL IMPACT ASSESSMENT PROCESS
BACKGROUND INFORMATION DOCUMENT**

Project Applicant:

Eskom Holdings SOC Limited

Environmental Assessment Practitioner & Public Participation Practitioner:

Baagi Environmental Consultancy

Postnet Suite 412, Private Bag X4, Menlo Park, 0102



INTRODUCTION

Baagi Environmental Consultancy has been appointed by Eskom Holdings SOC Limited to undertake a Basic Assessment (BA) for the proposed development of an 88KV Petrusdam Switch Station. The proposed plant will require an Environmental Authorisation in terms of section 24 of the National Environmental Management Act, 1998 (Act No. 107 of 1998).

Through the BA process, various alternatives will be assessed based on the proposed development and preferred alternatives will be considered.

This Background information Document (BID) serves to inform all the Interested and Affected Parties (I&APs) that Eskom Holdings SOC Limited proposes to construct an 88KV Switch Station in Zeerust, North West. In order to comply with all the relevant legislation, it is a requirement that Public Participation Process be undertaken in terms of section 41 of the National Environmental Management Act, 1998 (Act No. 107 of 1998) as amended 07 April 2017, which amongst others include the following activities:

1. Notifying and Consulting I&APs; and
2. Conduct a Basic Assessment (BA) to be submitted to the Department of Environmental Affairs (DEA) for decision making.

AIM OF THIS DOCUMENT

A Public Participation Process (PPP) forms an integral part of the Basic Assessment process. This Background Information Document (BID) aims to provide basic information regarding the project and offers the reader the opportunity to obtain information so as to make informed comments, raise issues of concern and collaborate in the development of the process. The distribution of this document is a crucial step in advising the reader on how to become involved in the process. This BID includes the following:

- An introduction to the project, including location details;
- An overview of the legal framework in which the project is executed;
- An explanation of the Public Participation Process (PPP) to be followed; and
- An explanation of how to get involved as an I&AP.

LIST OF ABBREVIATIONS AND ACRONYMS

Baagi -Baagi Environmental Consultancy	NEMA -National Environmental Management Act (Act 107 of 1998)
EIA -Environmental Impact Assessment	EIA REGS -EIA Regulations promulgated under NEMA on 07 April 2017:
BA - Basic Assessment	GNR 326 - Process Regulation
BID -Background Information Document	GNR 327,325 and 324 - Notices of listed activities
DEA -Department of Environmental Affairs	
EA -Environmental Authorisation	
EAP -Environmental Assessment Practitioner	
I&AP -Interested and Affected Party	

OVERVIEW OF THE PROPOSED PROJECT

Introduction

An Environmental Authorisation is required by means of a Basic Assessment (BA) issued by the Department of Environmental Affairs (DEA), under the provisions of the National Environmental Management Act, 1998 (Act No 107 of 1998, NEMA) as amended 07 April 2017, to enable Eskom Holdings SOC Limited to embark on a process to construct the Switch Station.

In order to ensure that the potential negative and positive impacts are investigated, understood, and mitigated (made less severe) the DEA promulgated regulations under the National Environmental Management Act (Act 107 of 1998) that (a) identify the activities that require a Basic Assessment (BA) or Full Scoping and Environmental Impact Assessment (S&EIA); and (b) govern how these studies must be conducted. These regulations are called the EIA Regulations of 07 April 2017 and can be found in Gazette No. 40772 and consists of the following regulations:

- Regulation 326 – Environmental Impact Assessment Regulations.
- Regulation 327 – Listing Notice 1.
- Regulation 325 – Listing Notice 2.
- Regulation 324 – Listing Notice 3.

The Study Area/Project Location

The proposed development of an 88KV Petrusdam Switch Station is within the Ramotshere Moiloa Local Municipality area, coordinates for the development are as follows:

- **Preferred Alternative:** -25⁰ 09'59.63" S ; 26⁰ 08'46.13" E
- **Site Alternative:** -25⁰ 09' 36,95" S ; 26⁰ 08 52', 61" E

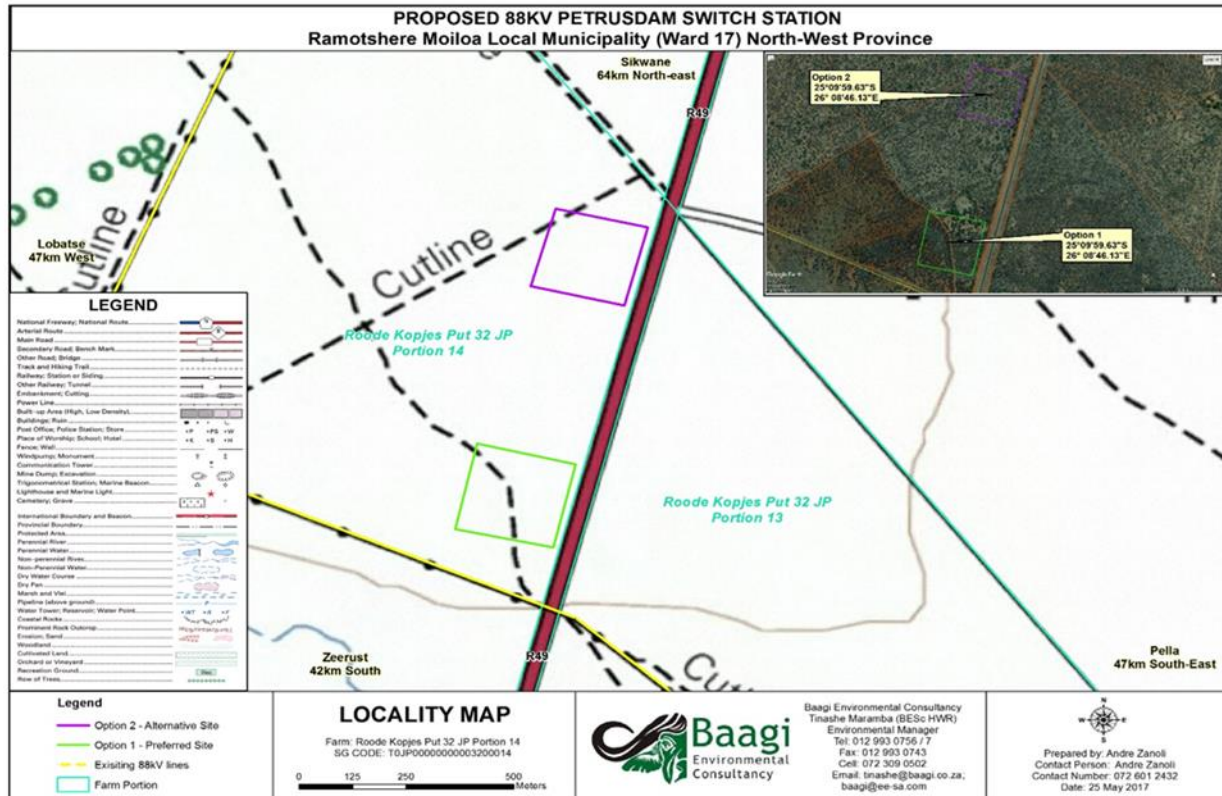


Figure 1: Locality map

The proposed development of an 88kV Petrusdam Switch Station Switch Station will affect the following property listed below:

ITEM NO	FARM NAME	PORTION/S
1.	ROODE KOPJESPUT/JP 32	14

Project Description (What the project Entails)

The Proposed Construction of the Petrusdam 88kV Switching Station entails but is not limited to:

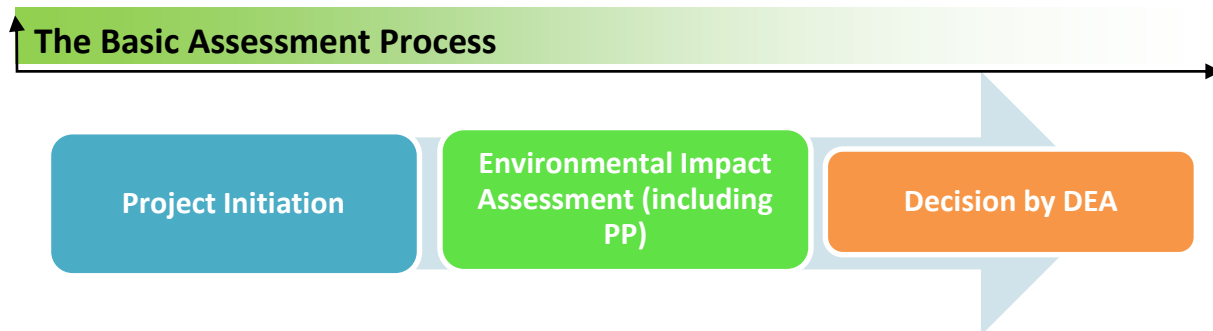
An establishment of an 88kV switching station at Petrusdam. The switching station will be equipped with 3 x 88kV feeder bays and make provision for a spare 88kV feeder bay. It will also consist of reconnecting three existing 88kV power lines to the following switching station by;

- Building 100m Petrusdam SWS Straatdrift Switch Station 88kV interconnector
- Building 100m Petrusdam SWS Marico minerals 88kV interconnector
- Building 100m Petrusdam SWS Gopani mine 88kV interconnector
- 6m wide access road to be constructed.

THE BASIC ASSESSMENT PROCESS

A Basic Assessment Process is a Planning and decision-making process with the aim to describe and assess the physical, social and economic impacts, which a given development may have. This enables the decision-making authority to make an informed decision regarding whether the project should be allowed. During the process much emphasis is placed on issues, concerns and questions raised by the public as this enables the Environmental Assessment Practitioner to pay particular attention to these issues.

The Basic Assessment Process allows for the environmental consequences of a proposed project to be identified and investigated prior to any decision being taken on the desirability of the project. During the Assessment, the Environmental Assessment Practitioner, the Public and the various specialists identify potential negative and positive impacts that could arise as a result of the proposed project and identify mitigation measures required to avoid or reduce negative impacts and to enhance positive impacts. This identification assists the decision-making authority (the DEA in this instance) in making a well-informed decision (whether to authorise the proposed development or not).



THE ENVIRONMENTAL ASSESSMENT PRACTITIONER

The Environmental Assessment Practitioner (EAP) for this project is Baagi Environmental Consultancy cc. According to NEMA, the EAP must be an independent professional with no links to the proponent or downstream interest in the project. Baagi Environmental Consultancy is such a consultant and will therefore lead this study.

THE PUBLIC PARTICIPATION PROCESS

What is a Public Participation Process?

A Public Participation Process (PPP) is a "...process leading to a joint effort by stakeholders, technical specialists, the authorities and the proponent who work together to produce better decisions than if they had acted independently" (Greyling, 1999). Throughout this process the public and specifically the Interested and or Affected Parties (I&APs) that registered will be consulted and involved. This involvement will be through dissemination of information by means of the BID, and making the Draft Scoping Assessment Report available for perusal and comment. The I&APs are encouraged to participate as far as possible.

Responsibilities of an Interested & Affected Party

Firstly, you need to register as an I&AP. This is done by contacting the representative of Baagi, providing him/her with your name and contact details. As a registered I&AP your name will be placed on an I&AP database that contains your name and contact details. Your responsibility as an I&AP is three-fold:

- To register officially as an I&AP;
- To comment on reports and other requests timeously;
- To inform the EAP of your interest in the BA process.

Public Participation Practitioner-Contact Details



Contact Person: Mr. Tinashe Maramba

Cell Number: 012 993 0756/7

Fax Number: 012 993 0743

E-Mail Address: tinashe@baagi.co.za

Postal Address: PostNet Suite 412
Private Bag X4
MENLO PARK
0102