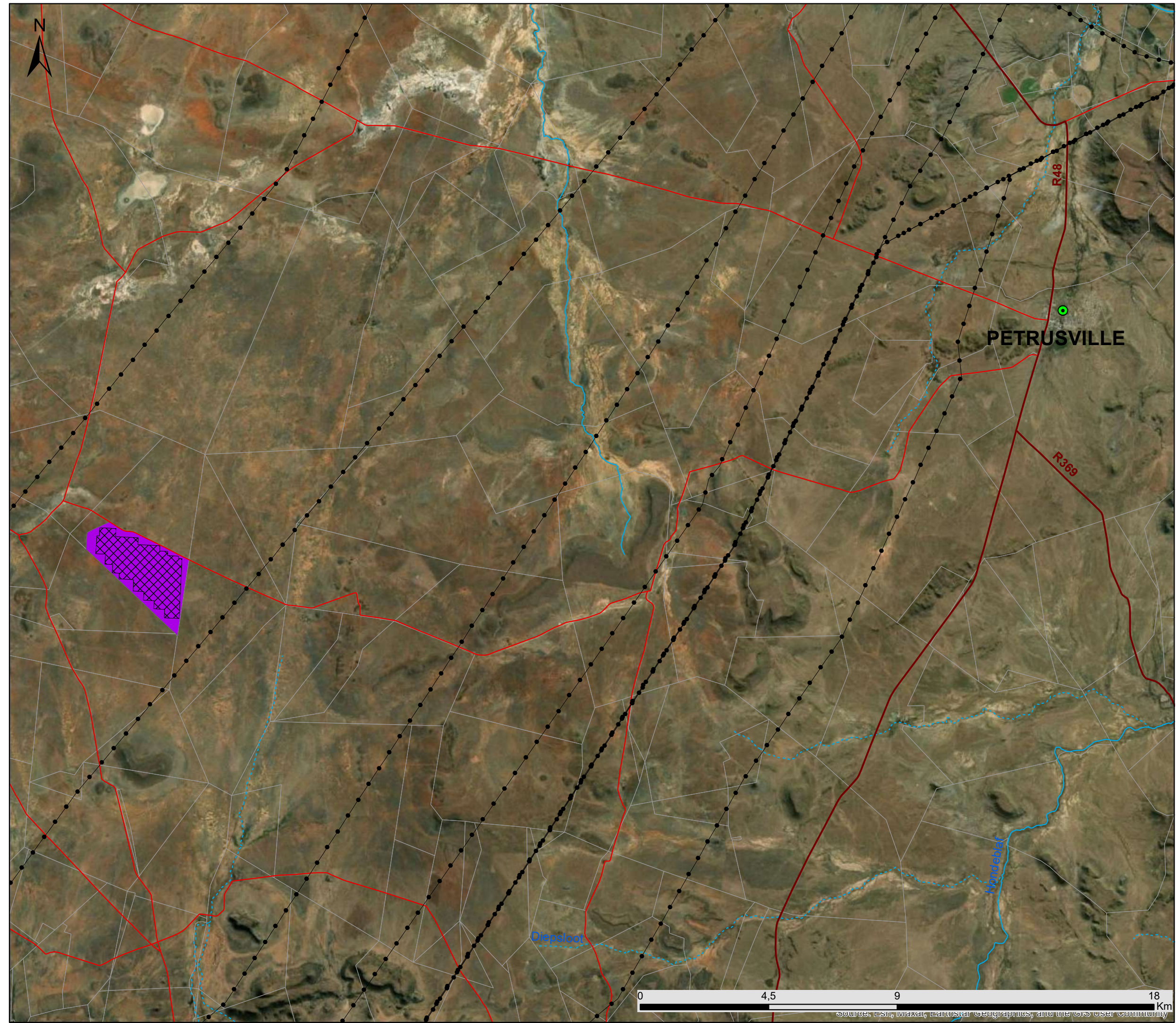


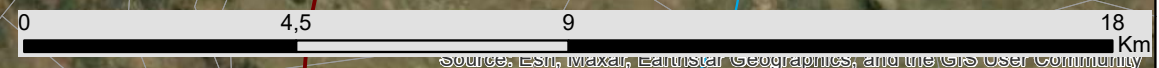
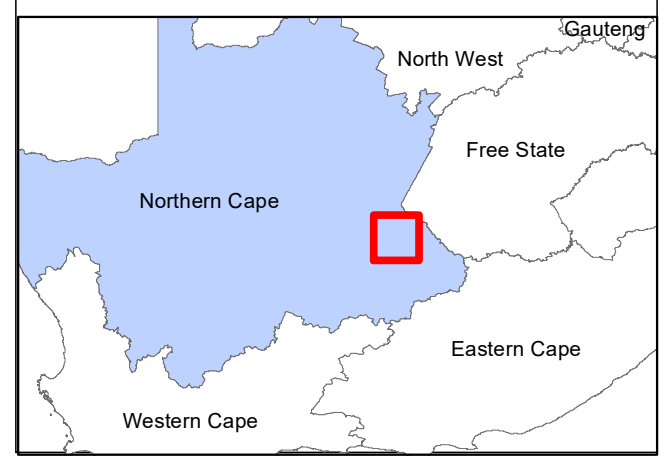
Tafelkop Solar PV Facility Crossroads Green Energy Cluster Northern Cape Province

Locality Map

- Legend**
- Town
 - Eskom Substation
 - Existing Power Line
 - National Road
 - Regional Road
 - Main Road
 - Non-perennial River
 - Perennial River
 - Tafelkop Solar PV Facility Development Area
 - Tafelkop Solar PV Facility Proposed Footprint
 - Farm Portions



Scale: 125 000
Projection: GCS_WGS_1984
Map Ref: Crossroads Green Energy Cluster



Source: Esri, Maxar, Earthstar Geographics, and the GIS User Community

Crossroads Green Energy Cluster Northern Cape Province

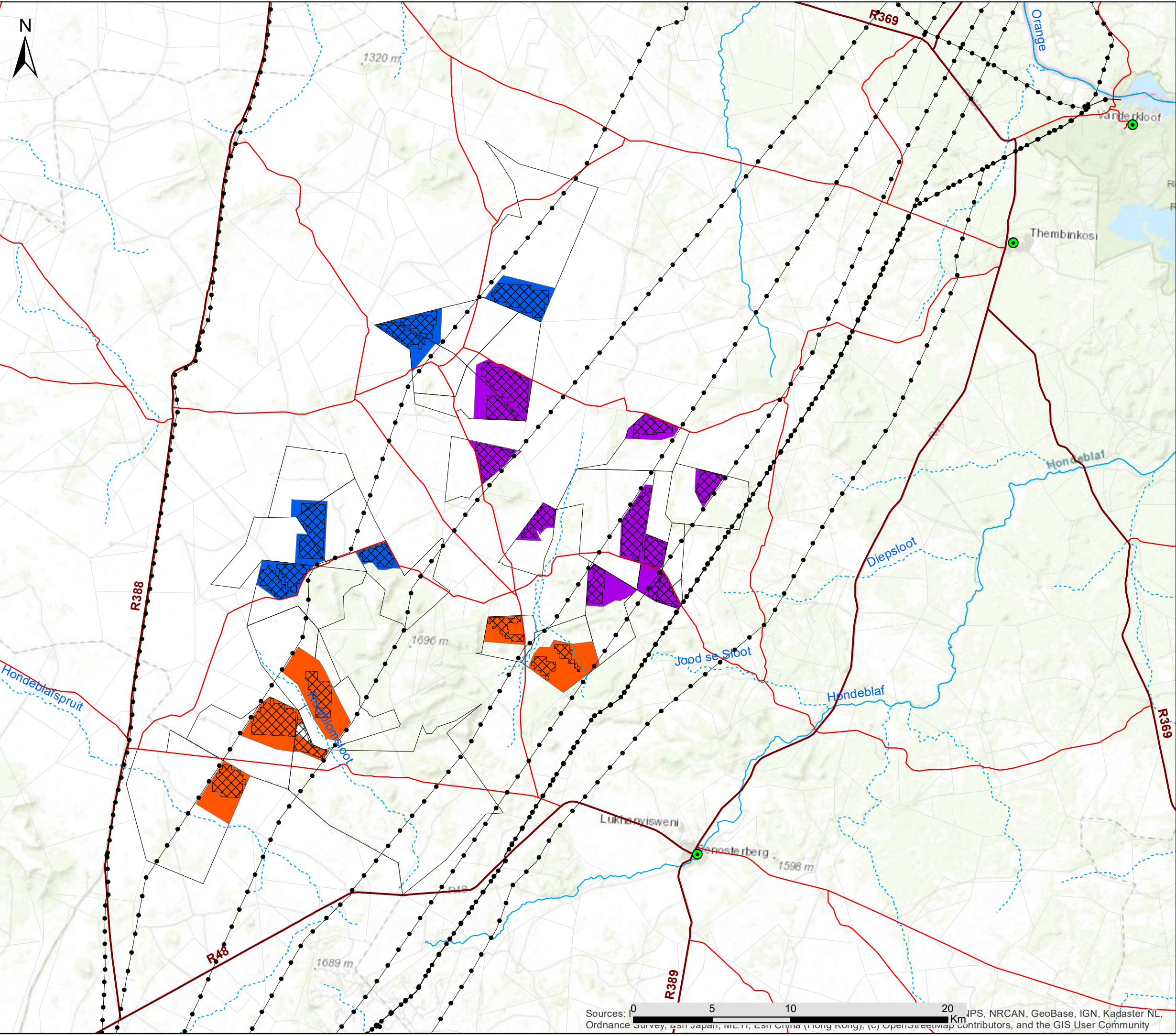
Locality Map

Legend

-  Town
-  Eskom Substation
-  Existing Power Line
-  National Road
-  Regional Road
-  Main Road
-  Non-perennial River
-  Perennial River
-  Phase 1 Solar Facilities
-  Phase 2 Solar Facilities
-  Phase 3 Solar Facilities
-  Affected Farm Portion



Scale: 230 000
 Projection: GCS_WGS_1984
 Map Ref: Hydra B Renewable Energy Cluster



Sources: 0 5 10 20 km
 IPS, NRCAN, GeoBase, IGN, Kadaster NL, Ordnance Survey, Esri Japan, METI, Esri China (Hong Kong), (c) OpenStreetMap contributors, and the GIS User Community

Crossroads Green Energy Cluster Northern Cape Province

Cumulative Map

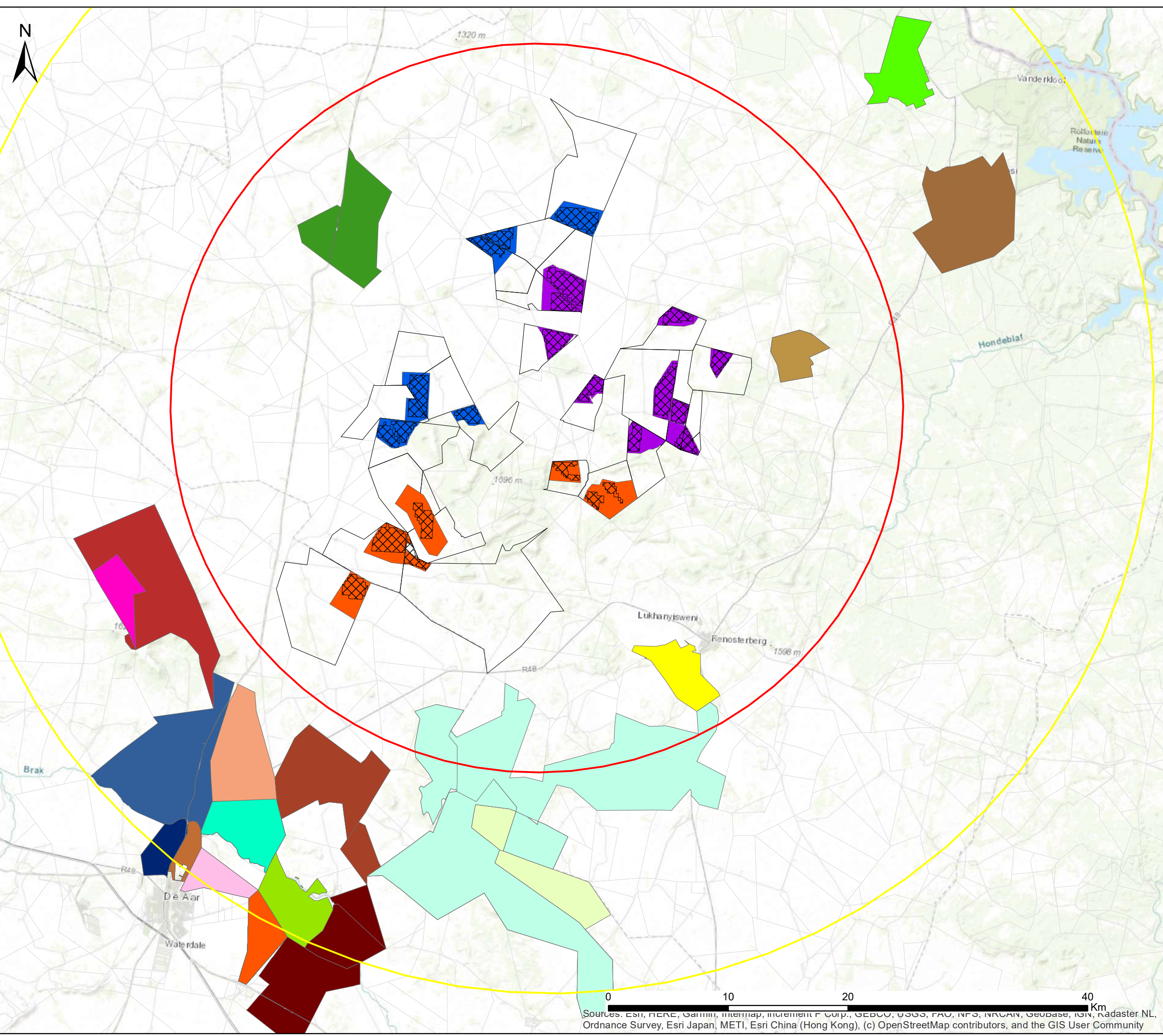
Legend

- 30 km radius
- 50 km radius
- Phase 1 Solar Facilities
- Phase 2 Solar Facilities
- Phase 3 Solar Facilities
- Affected Farm Portion

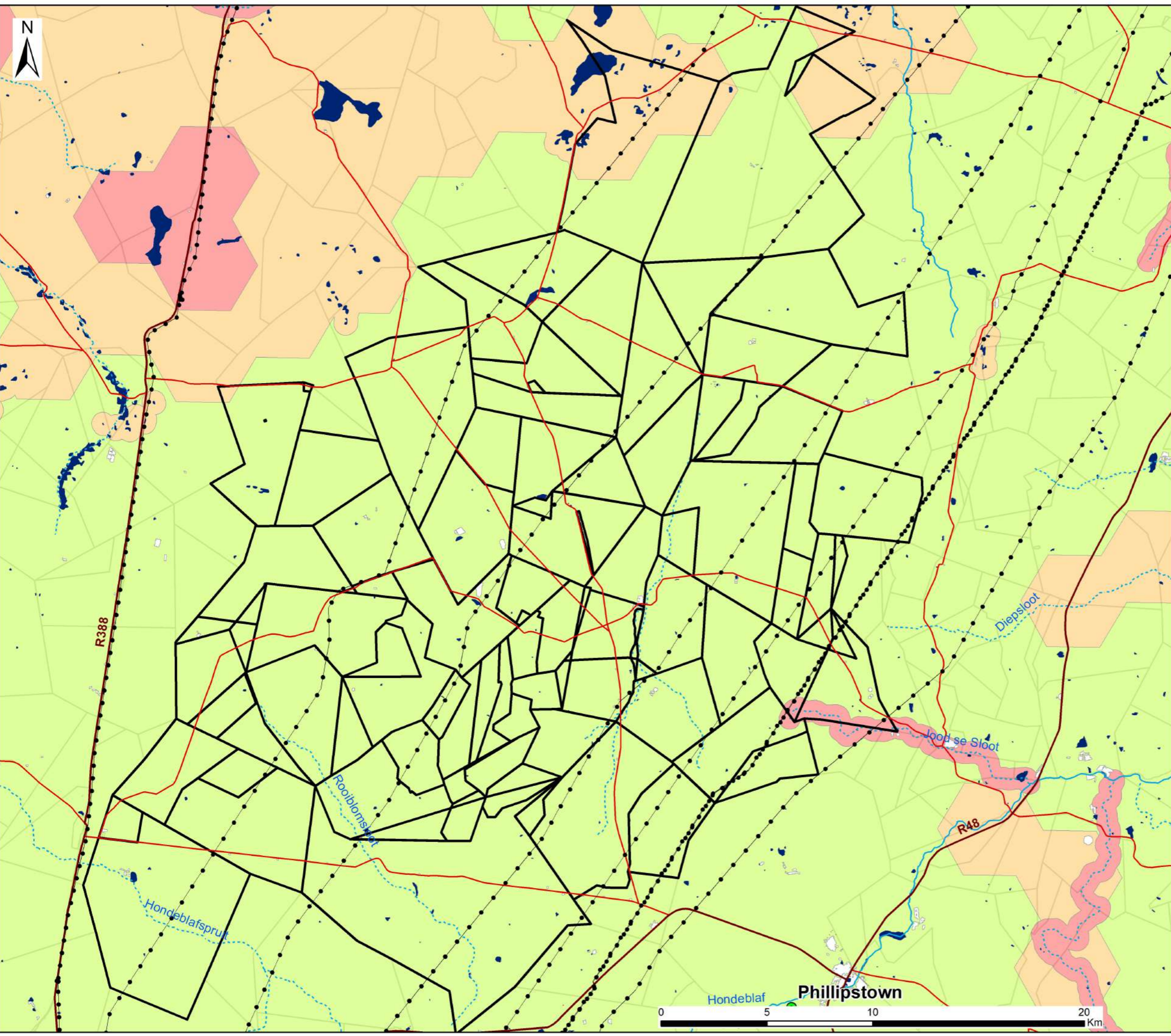
Other Renewable Energy Developments within 50km of the Hydra B Cluster

- 300MW Solar Power Plant in Phillipstown (Approved)
- 70 - 100 MW Solar Power Plant in Petrusville (In Progress)
- Castle wind energy facility project (In Process)
- Proposed PV facility on farm Blaauwkratz near De Aar (In Process)
- PV facility on farm Caroluspoot near De Aar (Approved)
- PV facility on farm Jakhalsfontein near De Aar (Approved)
- Solar Capital (PV facility on farm Loskop (In Process)
- Renosterberg PV power plant (Approved)
- Solar Power Generation Facility on the farm Vetlaagte 4 (Approved)
- Swartwater 75MW solar PV power facility (Approved)
- Ilanga Lethemba 2 PV energy facility (In Process)
- PV facility on farm Blaauwkratz near De Aar (In Process)
- Renewable energy farm on portion 5 of farm Kleinplaas No. 193 (In Process)
- 75-150mw Photovoltaic Solar Energy Facility on Paarde Valley Farm (Approved)
- Photovoltaic (Pv) Plant On Portion 29 Of The Farm Paarde 145 (In Process)
- ACED Renewables De AarSolar Energy Facility (Approved)
- The Proposed Construction Of Ilanga Lethemba Pv Solar Energy Facility
- Photovoltaic (Solar) Energy Facilities On Du Plessis Dam Farm (In Process)
- Renosterberg Wind Energy Facility (Approved)
- The Mulilo De Aar 2 South (Pty) Ltd Wind Energy Facility (Approved)
- 75MW PV SEF on the Remaining Extent of the Farm Vetlaagte 4 (Approved)
- Scatec Solar Photovoltaic Farms (Approved)

Scale: 300 000
 Projection: WGS_GCS_1984
 Map Ref: Crossroad Green Energy Cluster










Sources: Esri, HERE, Garmin, Intermap, increment P Corp., GEBCO, USGS, FAO, NPS, NRCAN, Geobase, IGN, Radaster NL, Ordnance Survey, Esri Japan, METI, Esri China (Hong Kong), (c) OpenStreetMap contributors, and the GIS User Community



Hydra B Renewable Energy Cluster Northern Cape Province

Sensitivity Map

Legend

-  Town
-  Non-perennial River
-  Perennial River
-  Existing Power Line
-  Regional Road
-  Main Road
-  Hydra B Renewable Energy Cluster

Environmental Sensitivities

-  NFEPA Wetlands
-  Critical Biodiversity Area One
-  Critical Biodiversity Area Two
-  Ecological Support Area

Scale: 1:170 000
 Projection: LO19
 Map Ref: Hydra B Renewable Energy Cluster

