

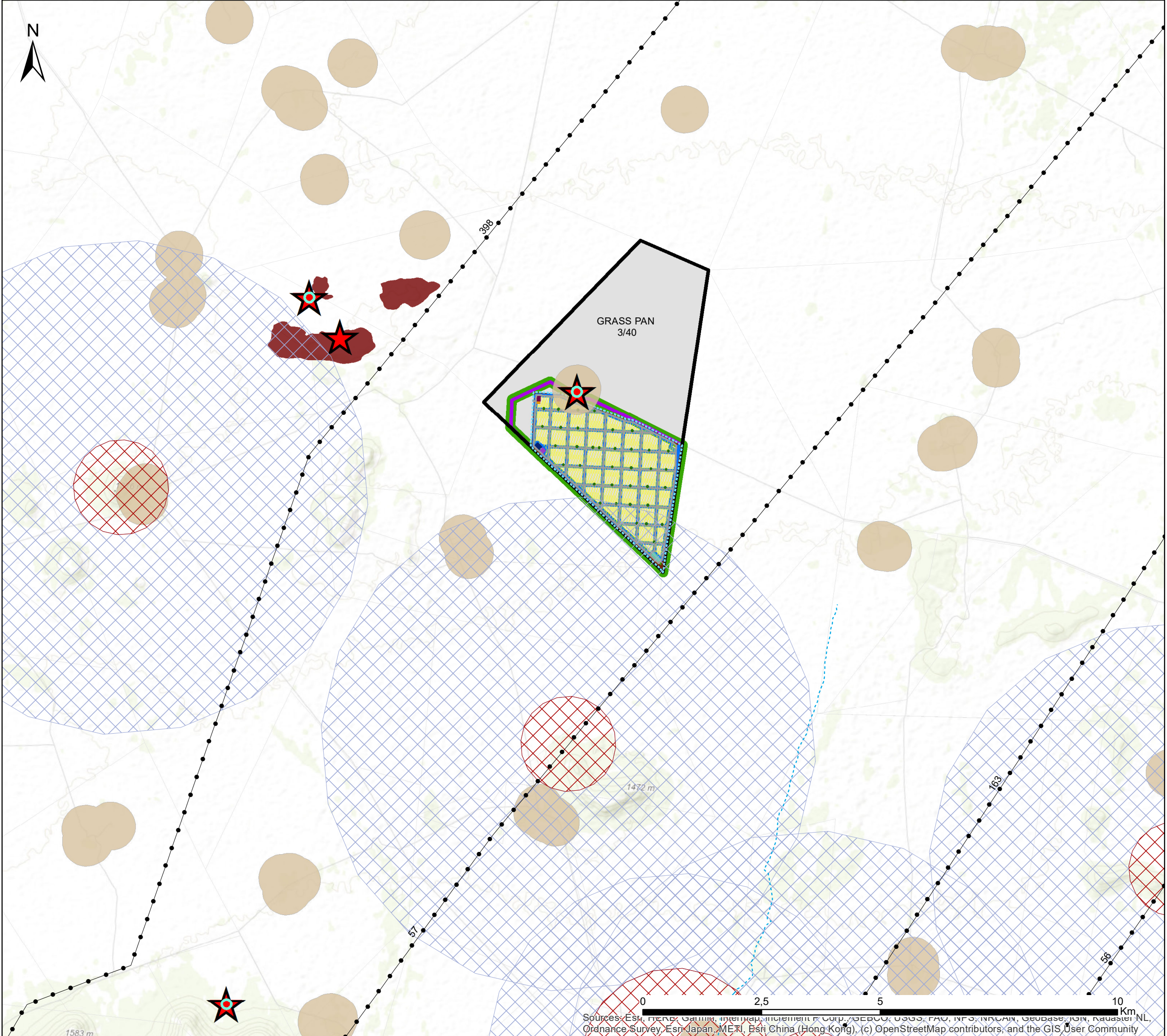


Crossroads Green Energy Tafelkop Solar PV Facility Northern Cape Province

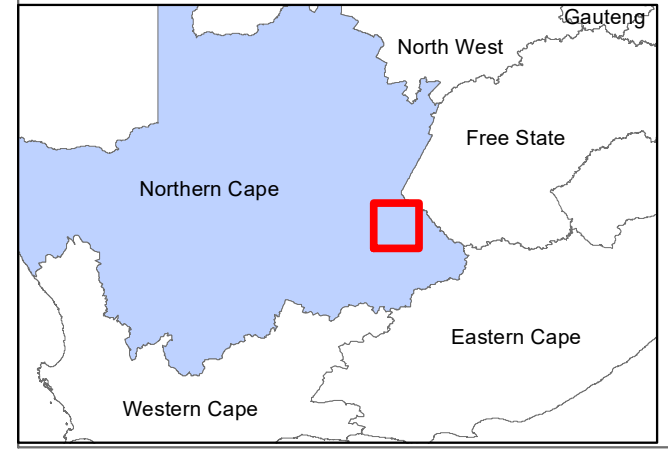
Layout & Sensitivity Map

Legend

- Transmission Lines
- Non-perennial River
- Perennial River
- Facility Layout**
- Internal Roads
- Power Stations
- ▭ Project Site
- ▭ Facility Fenceline
- ▭ Fire Break (50m)
- ▭ Development Area
- ▭ Development Footprint
- ▭ Solar PV Arrays
- ▭ On-Site Substation
- ▭ Office and Storage
- ▭ Laydown Area
- ▭ Parking Area
- ▭ BESS
- Avifauna Sensitivities**
- ▭ Nest buffers 2km - No Go areas
- ▭ Nest buffers - Low Sensitivity
- Heritage Sensitivities**
- ▭ Heritage 100m Buffer
- ★ Heritage Resources - Moderate Sensitivity
- ▭ No-go Areas
- Visual Sensitivities**
- ▭ Residences - Moderate Sensitivity
- Terrestrial Ecology Sensitivities**
- ▭ Karoo Grassland - Medium Sensitivity
- ▭ Affected Property



Scale: 1:75 000
 Projection: WGS_GCS_1984
 Map Ref: Crossroad Green Energy Cluster Tafelkop



Sources: Esri, DeLorme, Garmin, Intermap, increment Corp., GEBCO, USGS, FAO, NPS, NRCAN, Geobase, IGN, NAUSTAR NL, Ordnance Survey, Esri Japan, METI, Esri China (Hong Kong), (c) OpenStreetMap contributors, and the GIS User Community