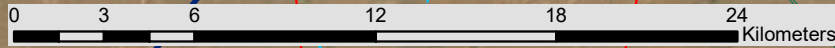
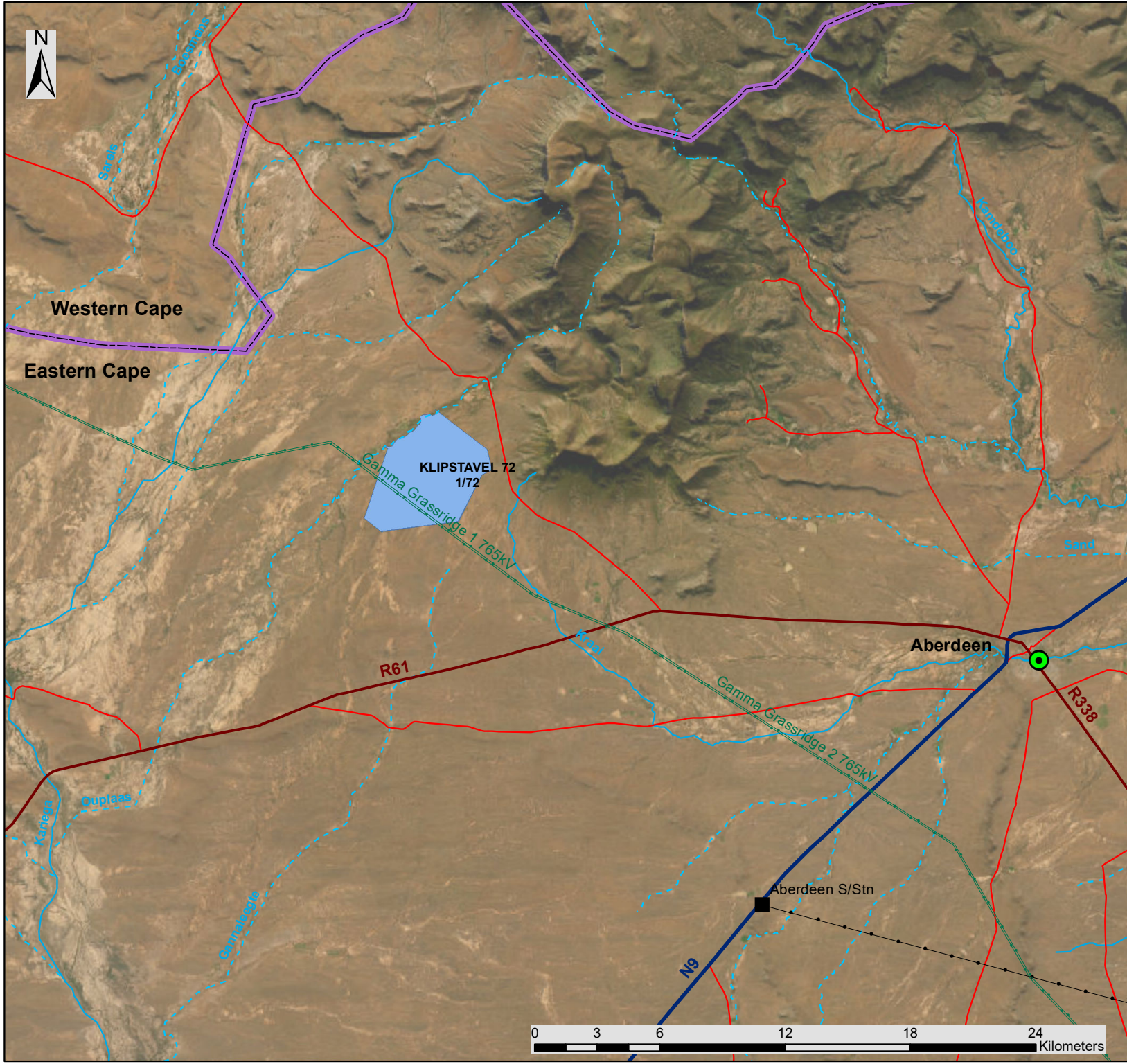




# FE Tango Wind Energy Facility Eastern Cape Locality Map

## Legend

- Town
- Existing Substation
- Eskom Power Line (Existing)
- Eskom Power Line (Approved)
- Regional Road
- National Road
- Main Road
- Perennial River
- Non Perennial River
- Provincial Boundary
- FE Tango Development Area
- Affected Property (Project Site)



Scale: 1:250 000  
Projection: GCS\_WGS\_1984  
Map Ref: FE Tango Locality Map















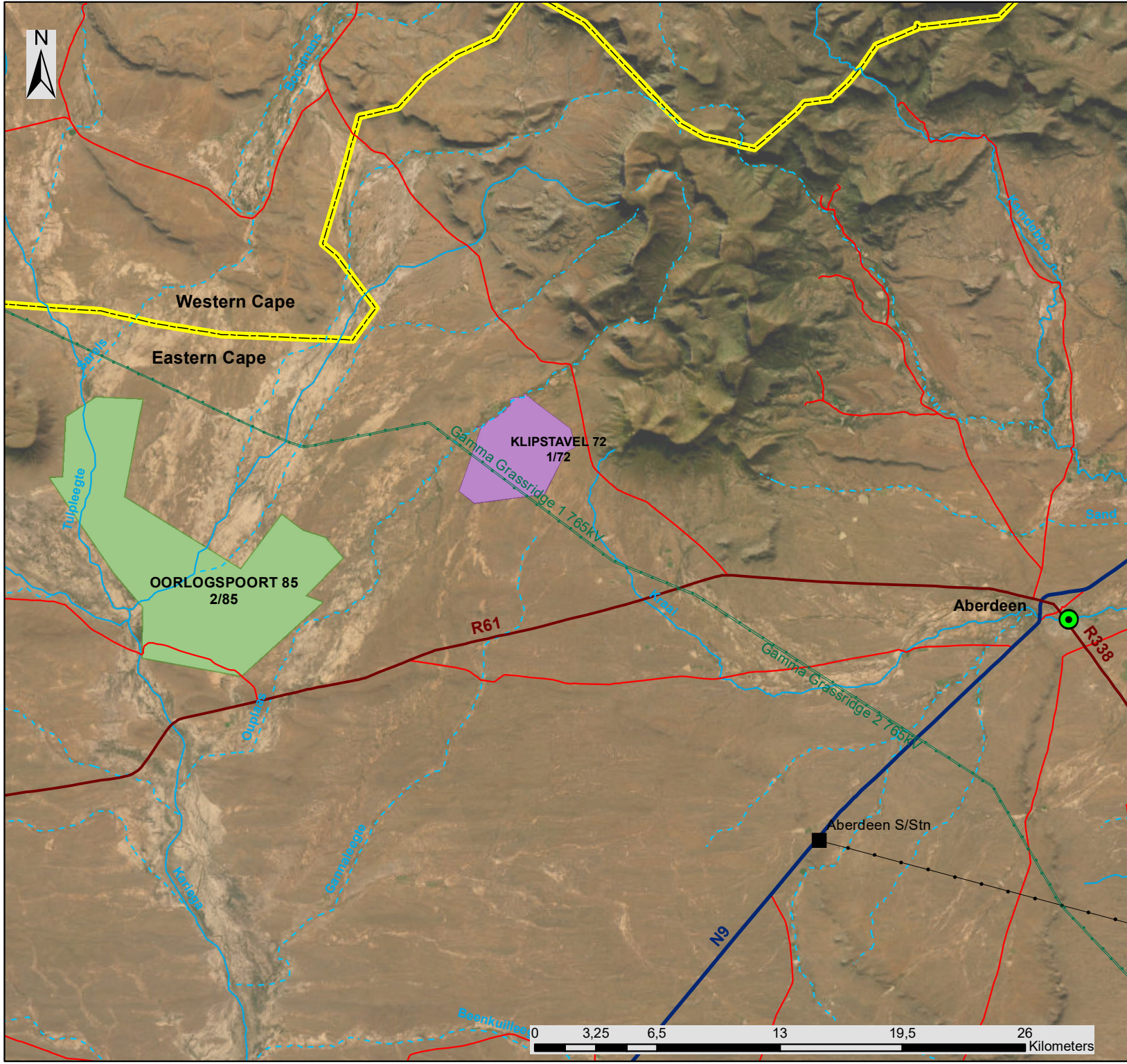


# FE Tango & Kudu Wind Energy Facilities Eastern Cape

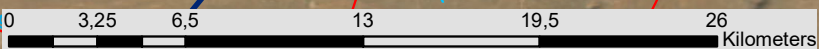
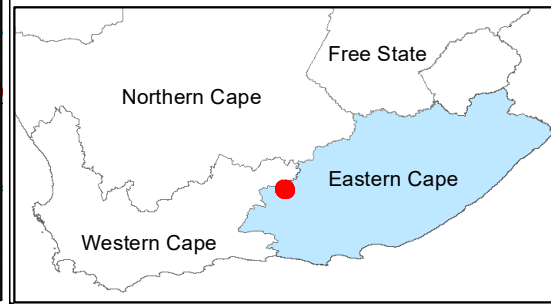
Combined Locality Map

## Legend

-  Town
-  Existing Substation
-  Eskom Power Line (Existing)
-  Eskom Power Line (Authorised Servitude)
-  Regional Road
-  National Road
-  Main Road
-  Perennial River
-  Non Perennial River
-  Provincial Boundary
-  FE Kudu Development Area
-  FE Tango Development Area



Scale: 1:250 000  
 Projection: GCS\_WGS\_1984  
 Map Ref: FE Tango & Kudu Combined Locality Map





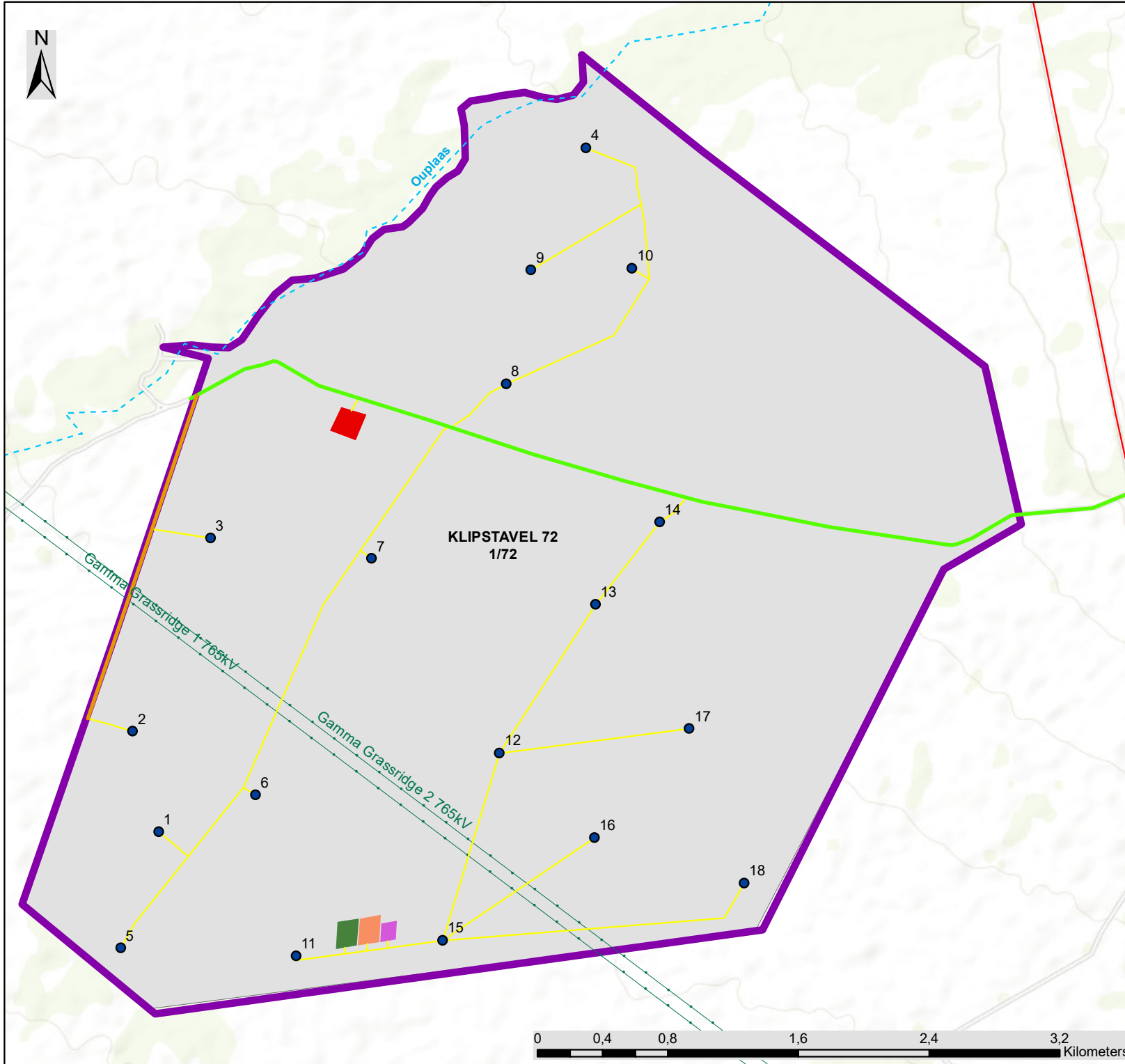
# FE Tango Wind Energy Facility Eastern Cape Layout Map

## Legend

- Eskom Power Line (Approved)
- Main Road
- Perennial River
- - - Non Perennial River
- ▭ FE Tango Development Area
- ▭ Affected Property (Project Site)

## Layout Plan:

- Turbines
- Existing Farm Road
- Main Access Road (Existing)
- Internal Roads
- ▭ BESS
- ▭ O&M Buildings
- ▭ On-Site Substation
- ▭ Laydown Area



Scale: 1:38 000  
Projection: GCS\_WGS\_1984  
Map Ref: FE Tango Layout Map





# FE Tango Wind Energy Facility Eastern Cape Sensitivity & Layout Map

## Legend

- Main Road
- Perennial River
- - - Non Perennial River
- Gamma-Grassridge 765kV Power Line 420m Setback Buffer (Authorised Servitude)
- FE Tango Development Area

## Layout Plan:

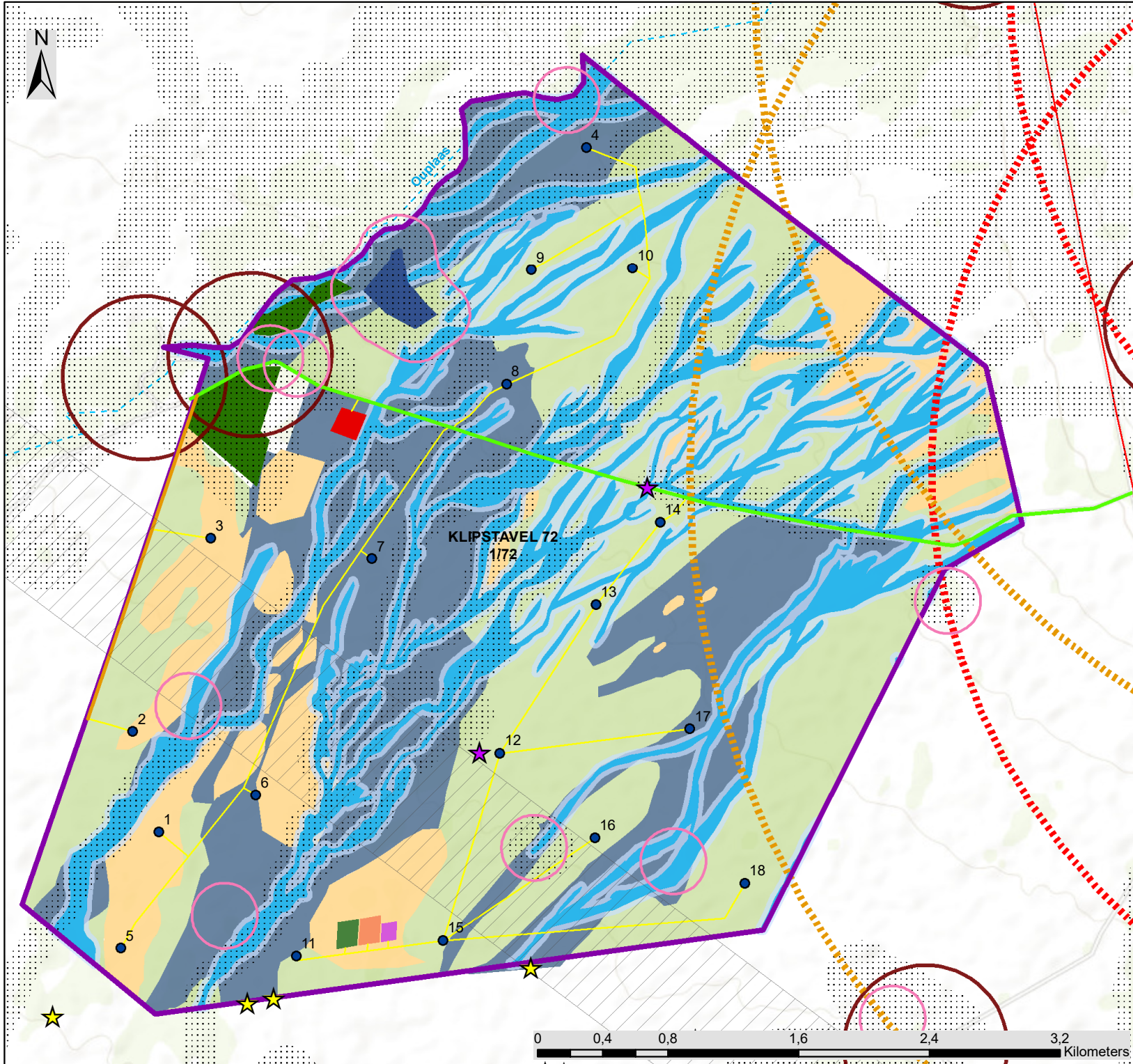
- Turbines
- Existing Farm Road
- Main Access Road
- Internal Roads
- BESS
- O&M Buildings
- On-Site Substation
- Laydown Area

## Environmental Sensitivities

- ★ Palaeontological Resources (Low Heritage Sensitivity)
- ★ Archaeological Resources (Low Heritage Sensitivity)
- Werf 500m Buffer (Turbine Exclusion Zone)
- 5.2km Verreux Eagle Nest Buffer (Medium Avifaunal Sensitivity)
- 3.7km Verreux Eagle Nest Buffer (Turbine Exclusion Zone)
- 200m Dams & Boreholes Buffer (Turbine Exclusion Zones)
- Very High Bat Sensitivity (Turbine Exclusion Zone)
- Agricultural Sensitive Area (Turbine Exclusion Zone)
- 32m Watercourse Buffer (High Aquatic Sensitivity)
- Watercourse (High Ecological Sensitivity)
- Dam (High Ecological Sensitivity)
- Transitional Vegetation (Medium Ecological Sensitivity)
- Alluvial Vegetation (Medium Ecological Sensitivity)
- Karroid Vegetation (Medium Ecological Sensitivity)

savannah  
environmental

Scale: 1:38 000  
Projection: GCS\_WGS\_1984  
Map Ref: FE Tango Sens & Layout Map







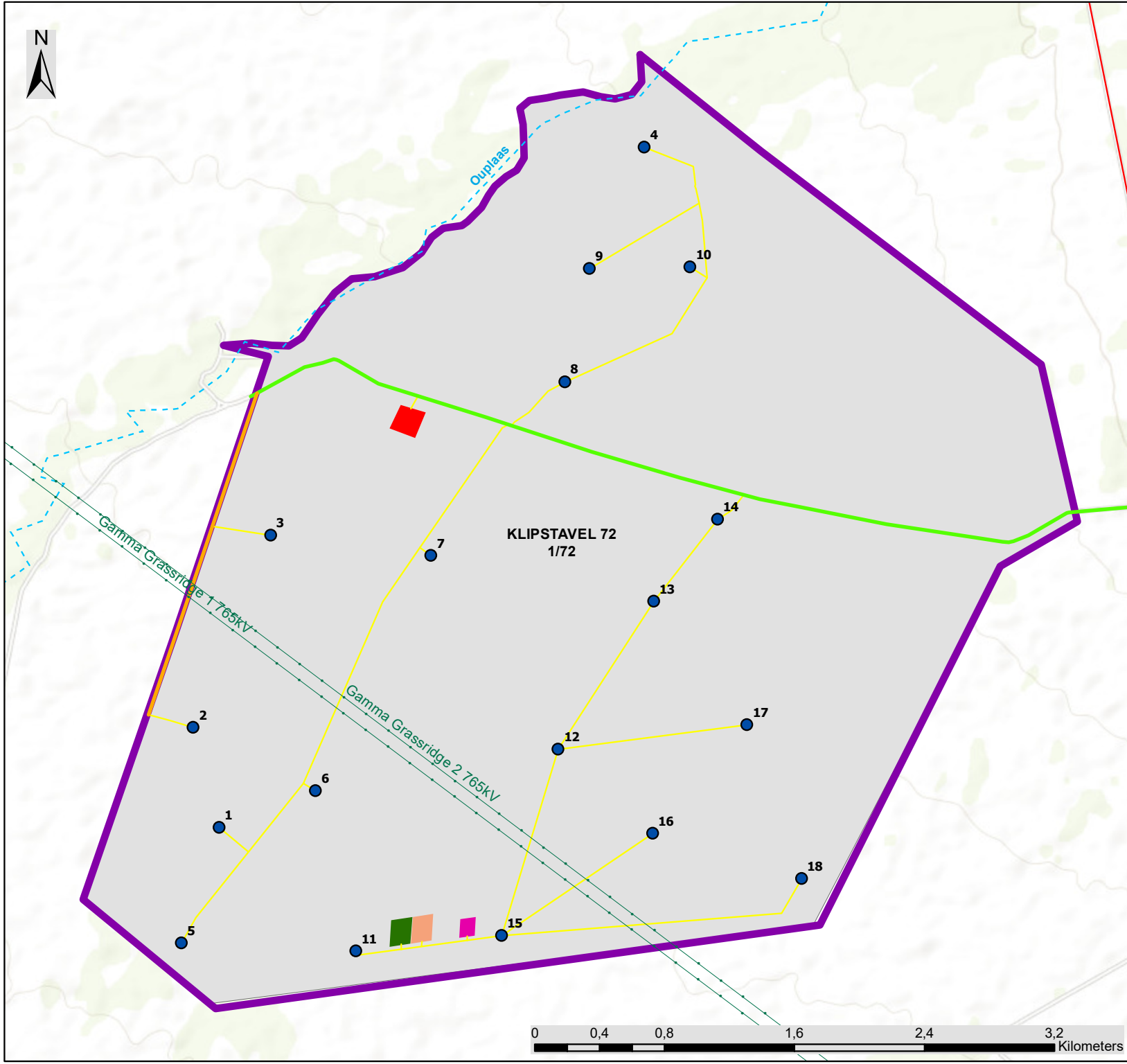
# FE Tango Wind Energy Facility Eastern Cape Adjusted Layout Map

## Legend

- Eskom Power Line (Authorised Servitude)
- Main Road
- Perennial River
- Non Perennial River
- FE Tango Development
- Affected Property (Project Site)

## Adjusted Layout Plan:

- Turbines
- Existing Farm Road
- Main Access Road
- Internal Roads
- BESS
- O&M Buildings
- On-Site Substation
- Laydown Area



Scale: 1:38 000  
Projection: GCS\_WGS\_1984  
Map Ref: FE Tango AdjustedLayout Map





# FE Tango Wind Energy Facility Eastern Cape

## Sensitivity & Adjusted Layout Map

### Legend

- Main Road
- Perennial River
- Non Perennial River
- Gamma-Grassridge 765KV Power Line 420m Setback Buffer (Authorised Servitude)
- FE Tango Development

### Adjusted Layout Plan:

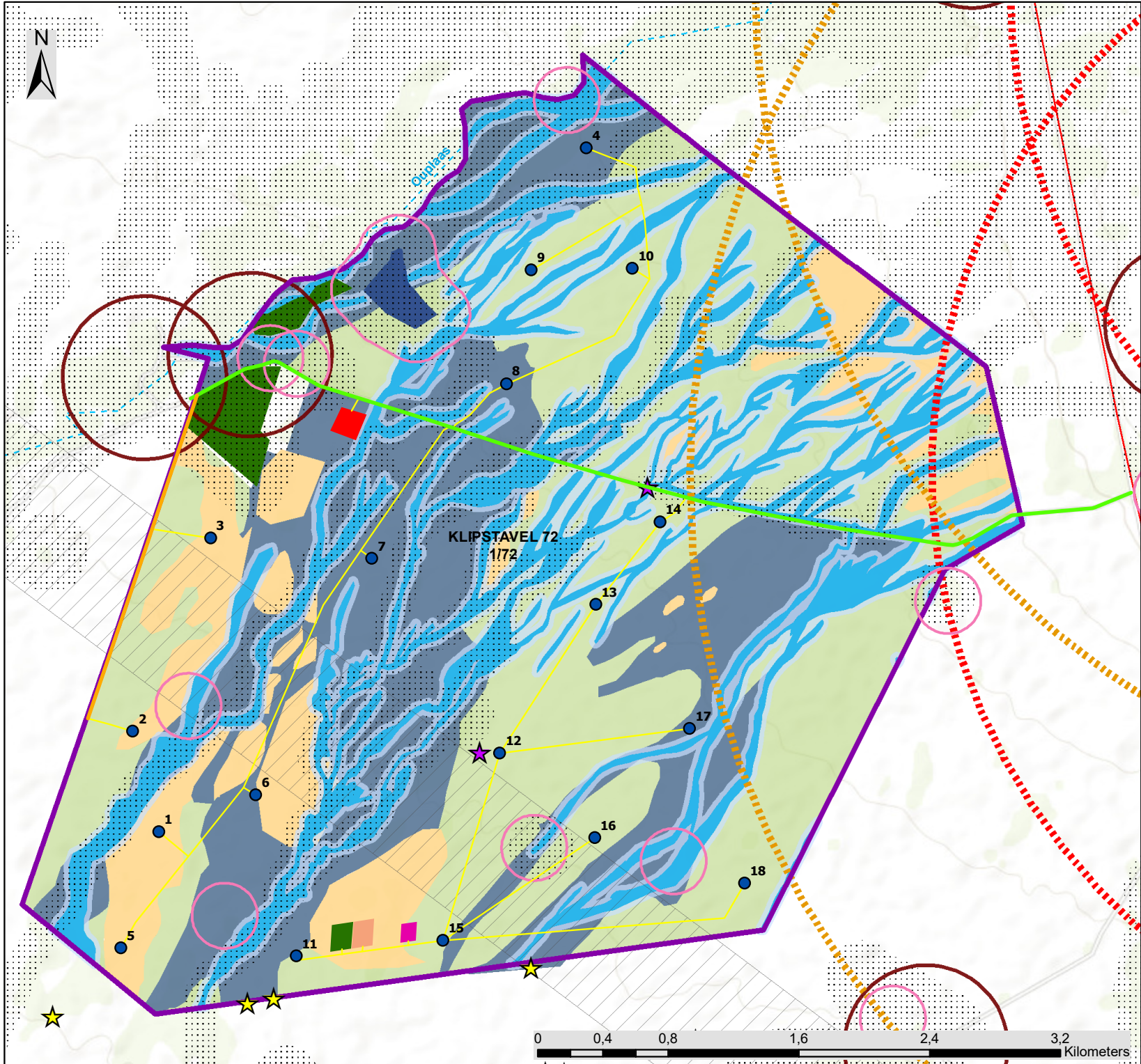
- Turbines
- Existing Farm Road
- Main Access Road
- Internal Roads
- BESS
- O&M Buildings
- On-Site Substation
- Laydown Area

### Environmental Sensitivities

- Palaeontological Resources (Low Heritage Sensitivity)
- Archaeological Resources (Low Heritage Sensitivity)
- Werf 500m Buffer (Turbine Exclusion Zone)
- 5.2km Verreux Eagle Nest Buffer (Medium Avifaunal Sensitivity)
- 3.7km Verreux Eagle Nest Buffer (Turbine Exclusion Zone)
- 200m Dams & Boreholes Buffer (Turbine Exclusion Zones)
- Very High Bat Sensitivity (Turbine Exclusion Zone)
- Agricultural Sensitive Area (Turbine Exclusion Zone)
- 32m Watercourse Buffer (High Aquatic Sensitivity)
- Watercourse (High Ecological Sensitivity)
- Dam (High Ecological Sensitivity)
- Transitional Vegetation (Medium Ecological Sensitivity)
- Alluvial Vegetation (Medium Ecological Sensitivity)
- Karrooid Vegetation (Medium Ecological Sensitivity)

savannah  
environmental

Scale: 1:38 000  
Projection: GCS\_WGS\_1984  
Map Ref: FE Tango Sens & Adjusted Layout Map












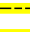




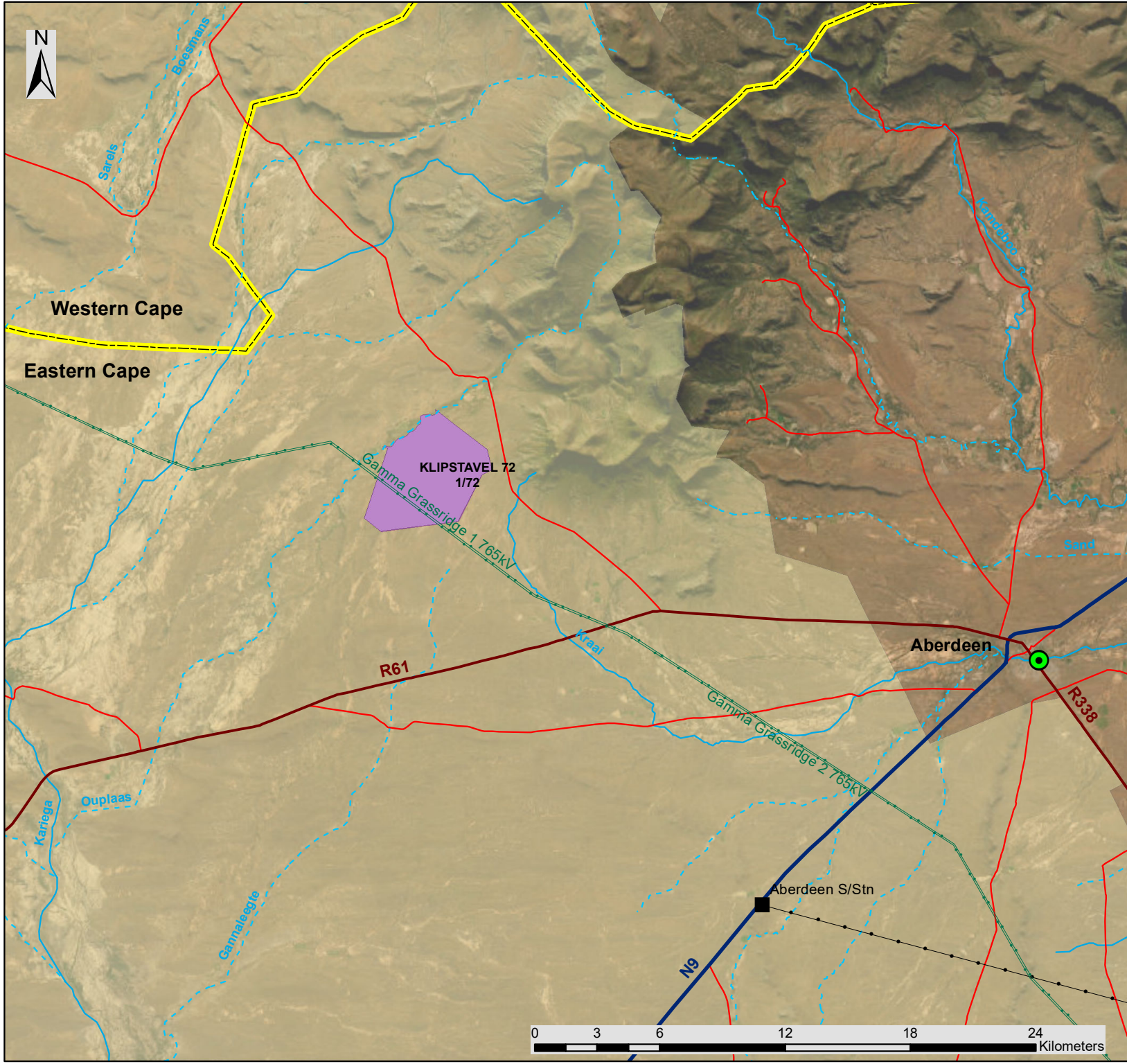


# FE Tango Wind Energy Facility Eastern Cape

## REDZ Map

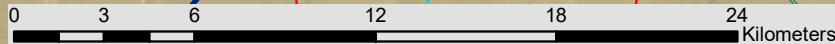
### Legend

-  Town
-  Existing Substation
-  Eskom Power Line (Existing)
-  Eskom Power Line (Authorised Servitude)
-  Regional Road
-  National Road
-  Main Road
-  Perennial River
-  Non Perennial River
-  Provincial Boundary
-  FE Tango Development Area
-  Beaufort West REDZ



savannah  
environmental

Scale: 1:250 000  
Projection: GCS\_WGS\_1984  
Map Ref: FE Tango REDZ Map



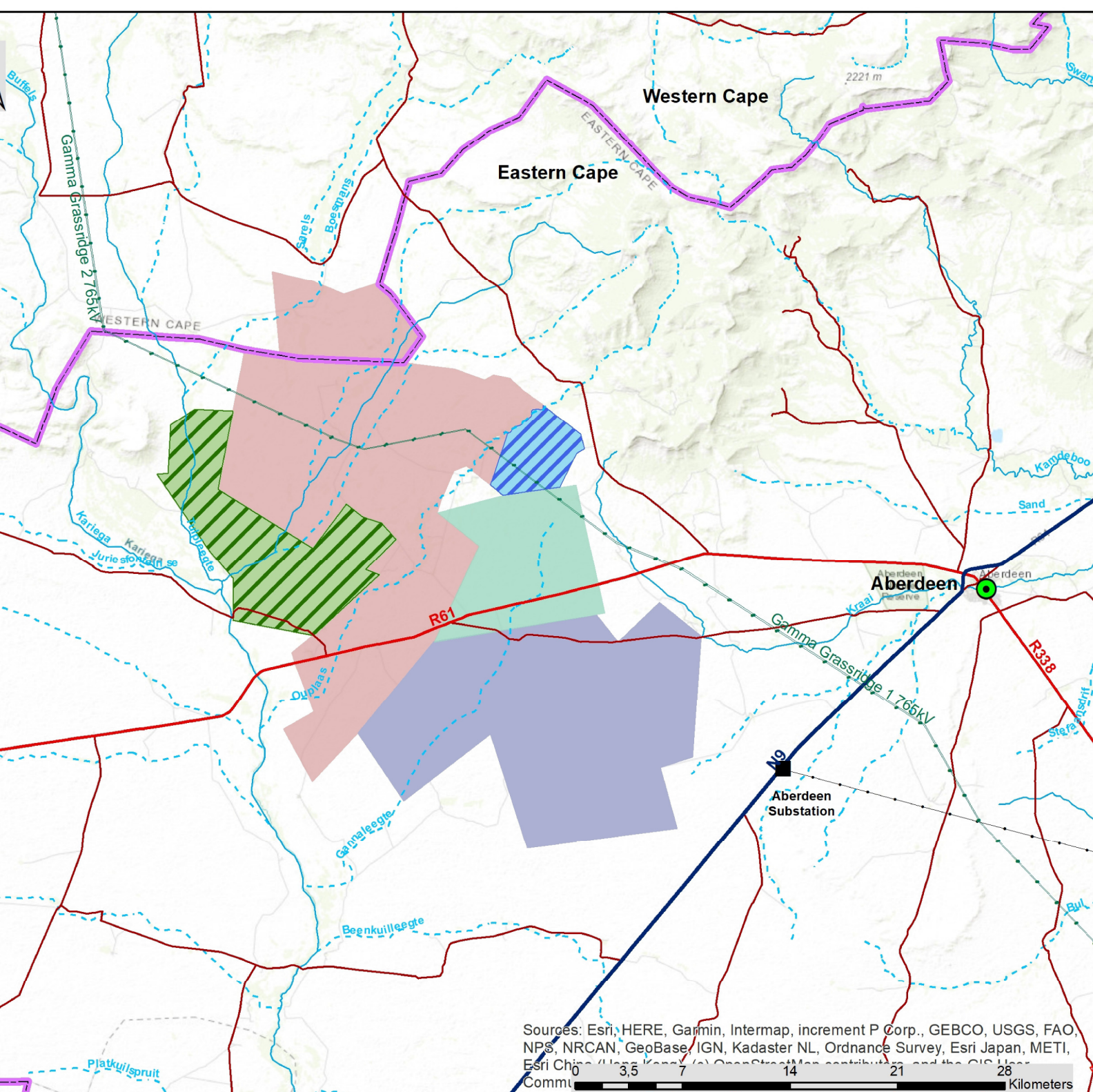


# FE Kudu & Tango Wind Energy Facilities Eastern Cape Province

Cumulative Map

## Legend

- Town
  - Existing Substation
  - Eskom Power Line (Existing)
  - Eskom Power Line (Authorised Servitude)
  - National Road
  - Regional Road
  - Main Road
  - Perennial River
  - - - Non Perennial River
  - Provincial Boundary
  - FE Kudu Development Area
  - FE Tango Development Area
- ### Properties linked to Renewable Energy Facilities (REEA 2022 Q3)
- Eskom Aberdeen Wind Farm (Authorised)
  - Aberdeen 1, 2 and 3 Wind Farms (Authorised)
  - Kariega Wind Facility Cluster (In Process)



Scale: 1:350 000  
 Projection: GCS\_WGS\_1984  
 Map Ref: FE Kudu & Tango Cumulative Map



Sources: Esri, HERE, Garmin, Intermap, increment P Corp., GEBCO, USGS, FAO, NPS, NRCAN, GeoBase, IGN, Kadaster NL, Ordnance Survey, Esri Japan, METI, Esri China (Hong Kong), Swisstopo, Mapbox Contributors, and the GIS User Community

