

# WETLAND ASSESSMENT

**Proposed Benicon 2 Industrial, approximately 10 km south of the centre of Emalahleni, Mpumalanga Province, South Africa**



View from beyond the site towards the Witbank Dam.  
Photo: Reinier F. Terblanche.

**MARCH 2020**

**COMPILED BY:**

**Reinier F. Terblanche**

(M.Sc, *Cum Laude*; Pr.Sci.Nat, Reg. No. 400244/05)

## TABLE OF CONTENTS

<b>1. INTRODUCTION .....</b>	<b>6</b>
<b>2. STUDY AREA .....</b>	<b>9</b>
<b>3. METHODS .....</b>	<b>12</b>
<b>4. RESULTS AND DISCUSSION .....</b>	<b>20</b>
<b>5. CONCLUSION .....</b>	<b>22</b>
<b>6. REFERENCES .....</b>	<b>23</b>

## I) SPECIALIST EXPERTISE

### SYNOPTIC CV: REINIER. F. TERBLANCHE

Reinier is an ecologist and in particular a habitat specialist with an exceptional combination of botanical and zoological expertise which he keeps fostering, updating and improving. He is busy with a PhD for which he registered at the Department of Conservation Ecology at the University of Stellenbosch in July 2013. The PhD research focuses on the landscape ecology of selected terrestrial and wetland butterflies in South Africa. Reinier's experience includes being a lecturer in ecology and zoology at the North West University, Potchefstroom Campus (1998-2008). Reinier collaborates with a number of institutes, organizations and universities on animal, plant and habitat research.

#### Qualifications:

Qualification	Main subject matter	University
<b>M.Sc Cum Laude, 1998:</b> Botany: Ecology	Quantitative study of invertebrate assemblages and plant assemblages of rangelands in grasslands.	North-West University, Potchefstroom
<b>B.Sc Honns Cum Laude, 1992</b> Botany: Taxonomy	Distinctions in all subjects: Plant Anatomy, Taxonomy, Modern Systematics, System Modelling, Plant Ecology, Taxonomy Project. Also included: Statistics Attendance Course.	North-West University, Potchefstroom
<b>B.Sc</b> Botany, Zoology	Main subjects: Botany, Zoology.	North-West University, Potchefstroom
<b>Higher Education Diploma, 1990</b>	Numerous subjects aimed at holistic training of teachers.	North-West University, Potchefstroom

In research Reinier specializes in conservation biology, threatened butterfly species, vegetation dynamics and ant assemblages at terrestrial and wetland butterfly habitats as well as enhancing quantitative studies on butterflies of Africa. He has published extensively in the fields of taxonomy, biogeography and ecology in popular journals, peer-reviewed scientific journals and as co-author and co-editor of books (see 10 examples beneath).

Reinier practices as an ecological consultant and has been registered as a Professional Natural Scientist by SACNASP since 2005: Reg. No. 400244/05. His experience in consultation includes: Flora and fauna habitat surveys, Threatened species assessments, Riparian vegetation index surveys, Compilation of Ecological Management Plans, Biodiversity Action Plans and Status quo of biodiversity for Environmental Management Frameworks, Wetland Assessments, Management of Rare Wetland Species.

*Recent activities/ awards:* Best Poster Award at Oppenheimer De Beers Group Research Conference 2015, Johannesburg. One of the co-authors of Guidelines for Standardised Global Butterfly Monitoring, 2015, Group on Earth Observations Biodiversity Observation Network, Leipzig, Germany (UNEP-WCMC), GEO BON Technical Series 1. Awarded the prestigious Torben Larsen Memorial Tankard in October 2017; one is awarded annually to the person responsible for the most outstanding written account on Afrotropical Lepidoptera. Lectured as Conservationist-in-Residence in the Wildlife Conservation Programme of the African Leadership University, Kigali, Rwanda, 9-23 February 2019. Reinier won a photographic competition which resulted his photograph of the Critically Endangered *Erikssonia edgei* (Waterberg Copper) being on the front cover of the Synthesis Report of the National Biodiversity Assessment (2018) prepared by SANBI. Reinier is a Research Fellow at the University of South Africa (Unisa) from 1 January 2020.

## EXPERIENCE

Lecturer: Zoology 1998-2008	Main subject matter and level	Organization
Lectured subjects	- 3 <sup>rd</sup> year level Ecology, Plantparasitology - 2 <sup>nd</sup> year level Ethology - <i>Master's degree</i> Evolutionary Ethology, Systematics in Practice, Morphology and Taxonomy of Insect Pests, Wetlands.	North-West University, Potchefstroom and University of South Africa
Co-promoter	PhD: Edge, D.A. 2005. Ecological factors that influence the survival of the Brenton Blue butterfly	North-West University, Potchefstroom
Study leader/ assistant study leader	Six MSc students, One BSc Honn student: Various quantitative biodiversity studies (terrestrial and aquatic).	North-West University, Potchefstroom
Teacher 1994-1998	Biology and Science, Secondary School	Afrikaans Hoër Seunskool, Pretoria
Owned Anthene Ecological CC 2008 – present	- Flora and Fauna habitat surveys - Highly specialized ecological surveys - Riparian vegetation index surveys - Ecological Management Plans - Biodiversity Action Plans - Biodiversity section of Environmental Management Frameworks - Wetland assessments	Private Closed Corporation that has been subcontracted by many companies
Herbarium assistant 1988-1991	- Part-time assistant at the A.P. Goossens herbarium, Botany Department, North-West University, 1988, 1989, 1990 and 1991 (as a student).	North-West University, Potchefstroom

## 10 EXAMPLES OF PUBLICATIONS OF WHICH R.F. TERBLANCHE IS AUTHOR/ CO-AUTHOR

(Three books, two chapters in books and five articles are listed here as examples)

- HENNING, G.A., TERBLANCHE, R.F. & BALL, J.B. (eds) 2009. *South African Red Data Book: butterflies*. SANBI Biodiversity Series 13. South African National Biodiversity Institute, Pretoria. 158p. ISBN 978-1-919976-51-8
- MECENERO, S., BALL, J.B., EDGE, D.A., HAMER, M.L., HENNING, G.A., KRÜGER, M., PRINGLE, E.L., TERBLANCHE, R.F. & WILLIAMS, M.C. (eds). 2013. *Conservation Assessment of Butterflies of South Africa, Lesotho and Swaziland: Red List and atlas*. Saffronics (Pty) Ltd., Johannesburg & Animal Demography Unit, Cape Town.
- VAN SWAAY, C., REGAN, E., LING, M., BOZHINOVSKA, E., FERNANDEZ, M., MARINI-FILHO, O.J., HUERTAS, B., PHON, C.-K., KÖRÖSI, A., MEERMAN, J., PE'ER, G., UEHARA-PRADO, M., SÁFIÁN, S., SAM, L., SHUEY, J., TARON, D., TERBLANCHE, R.F. & UNDERHILL, L. 2015. Guidelines for Standardised Global Butterfly Monitoring. Group on Earth Observations Biodiversity Observation Network, Leipzig, Germany. GEO BON Technical Series 1.
- TERBLANCHE, R.F. & HENNING, G.A. 2009. *A framework for conservation management of South African butterflies in practice*. In: Henning, G.A., Terblanche, R.F. & Ball, J.B. (eds). *South African Red Data Book: Butterflies*. SANBI Biodiversity Series 13. South African National Biodiversity Institute, Pretoria. p. 68 – 71.
- EDGE, D.A., TERBLANCHE, R.F., HENNING, G.A., MECENERO, S. & NAVARRO, R.A. 2013. Butterfly conservation in southern Africa: Analysis of the Red List and threats. In: Mecenero, S., Ball, J.B., Edge, D.A., Hamer, M.L., Henning, G.A., Krüger, M., Pringle, E.L., Terblanche, R.F. & Williams, M.C. (eds). *Conservation Assessment of Butterflies of South Africa, Lesotho and Swaziland: Red List and Atlas*. pp. 13-33. Saffronics (Pty) Ltd., Johannesburg & Animal Demography Unit, Cape Town.
- TERBLANCHE, R.F., SMITH, G.F. & THEUNISSEN, J.D. 1993. Did Scott typify names in *Haworthia* (Asphodelaceae: Aloioideae)? *Taxon* 42(1): 91–95. (International Journal of Plant Taxonomy).
- TERBLANCHE, R.F., MORGENTHAU, T.L. & CILLIERS, S.S. 2003. The vegetation of three localities of the threatened butterfly species *Chrysoritis aureus* (Lepidoptera: Lycaenidae). *Koedoe* 46(1): 73-90.
- EDGE, D.A., CILLIERS, S.S. & TERBLANCHE, R.F. 2008. Vegetation associated with the occurrence of the Brenton blue butterfly. *South African Journal of Science* 104: 505 - 510.
- GARDINER, A.J. & TERBLANCHE, R.F. 2010. Taxonomy, biology, biogeography, evolution and conservation of the genus *Erikssonia* Trimen (Lepidoptera: Lycaenidae). *African Entomology* 18(1): 171-191.
- TERBLANCHE, R.F. 2016. *Acraea trimeni* Aurivillius, [1899], *Acraea stenobea* Wallengren, 1860 and *Acraea neobule* Doubleday, [1847] on host-plant *Adenia repanda* (Burch.) Engl. at Tswalu Kalahari Reserve, South Africa. *Metamorphosis* 27: 92-102.

\* A detailed CV with more complete publication list is available.

## II) SPECIALIST DECLARATION

I, Reinier F. Terblanche, as the appointed independent specialist, in terms of the 2014 EIA Regulations (as amended), hereby declare that I:

- I act as the independent specialist in this application;
- I perform the work relating to the application in an objective manner, even if this results in views and findings that are not favourable to the applicant;
- regard the information contained in this report as it relates to my specialist input/study to be true and correct, and do not have and will not have any financial interest in the undertaking of the activity, other than remuneration for work performed in terms of the NEMA, the Environmental Impact Assessment Regulations, 2014 (as amended) and any specific environmental management Act;
- I declare that there are no circumstances that may compromise my objectivity in performing such work;
- I have expertise in conducting the specialist report relevant to this application, including knowledge of the Act, Regulations and any guidelines that have relevance to the proposed activity;
- I will comply with the Act, Regulations and all other applicable legislation;
- I have no, and will not engage in, conflicting interests in the undertaking of the activity;
- I have no vested interest in the proposed activity proceeding;
- I undertake to disclose to the applicant and the competent authority all material information in my possession that reasonably has or may have the potential of influencing - any decision to be taken with respect to the application by the competent authority; and the objectivity of any report, plan or document to be prepared by myself for submission to the competent authority;
- I have ensured that information containing all relevant facts in respect of the specialist input/study was distributed or made available to interested and affected parties and the public and that participation by interested and affected parties was facilitated in such a manner that all interested and affected parties were provided with a reasonable opportunity to participate and to provide comments on the specialist input/study;
- I have ensured that the comments of all interested and affected parties on the specialist input/study were considered, recorded and submitted to the competent authority in respect of the application;
- all the particulars furnished by me in this specialist input/study are true and correct; and
- I realise that a false declaration is an offence in terms of regulation 48 and is punishable in terms of section 24F of the Act.

Name of Specialist: Reinier F. Terblanche



Signature of the specialist

Date: 13 May 2020

# 1 INTRODUCTION

A wetland assessment is required for proposed the proposed Benicon 2 Industrial development, approximately 10 km south of the centre of Emalahleni, Mpumalanga Province (elsewhere referred to as the site), and if wetlands are present an assessment of these wetlands. Such an assessment, if wetlands are present, would then focus on the hydro-geomorphic setting, an estimate of the properties of the wetlands, an assessment of the functional aspects of wetlands and an impact assessment to wetlands, should the development be approved.

## 1.1 Wetlands in South Africa

Wetlands are defined by the National Water Act (Act 36 of 1998) as:

“land which is transitional between terrestrial and aquatic ecosystems where the water table is usually at or near the surface, or the land is periodically covered with shallow water, and which land in normal circumstances supports or would support vegetation typically adapted to life in saturated soil”.

According to *A practical field procedure for identification and delineation of wetlands and riparian areas* (DWAF 2005) wetlands must have one or more of the following attributes:

- Wetland (hydromorphic) soils that display characteristics resulting from prolonged saturation
- The presence, at least occasionally, of water loving plants (hydrophytes)
- A high-water table that results in saturation at or near the surface, leading to anaerobic conditions developing in the top 50cm of the soil

Wetlands, according to the definition of DWAF (2005) are at the interface of aquatic systems and the terrestrial environment. As such the characteristics of the surface water or near surface water in space and time at this interface between the terrestrial and aquatic environment are fundamental to understand the functioning of a particular wetland. At the higher elevations of South Africa surface water at wetlands are characterised by considerable contrasts between seasons and periodic precipitation events. Generally accepted definitions of wetlands which focus on the wetland attributes of soil and vegetation are therefore useful because of its consistency despite seasonal fluctuations.

The Classification System for Wetlands and other Aquatic Ecosystems in South Africa (Ollis *et al.*, 2013) includes wetland ecosystems defined by the National Water Act (Act 36 of 1998) as well as those “wetland systems” defined in the Ramsar Convention. The broader definition of wetlands, according to the Ramsar Convention is that wetlands are areas of marsh, fen, peatland or water, whether natural or artificial, permanent or temporary, with water that is static or flowing, fresh, brackish or salt, including areas of marine water to the depth of which at low tide does not exceed six metres (cited by Ramsar Convention Secretariat 2011). This Ramsar definition of “wetlands” overlaps broadly with the definition of aquatic systems according to the South African system of classifying wetlands and other aquatic ecosystems. In South Africa an aquatic ecosystem is an ecosystem that is permanently or periodically inundated by flowing or standing water, or which has soils that are permanently or periodically saturated within 0.5 m of the soil surface (Ollis *et al.*, 2013). Therefore an important consideration of the Classification System for Wetlands and other Aquatic Ecosystems in South Africa (Ollis *et al.*, 2013) is that a wetland (narrow definition according to water act and not Ramsar definition) is taken to be a unique type of aquatic system.

## **1.2 Importance of wetlands**

The importance of wetlands for human well-being and the conservation of biodiversity are recognised world-wide. Ecosystem services which directly or indirectly benefit human well-being are of particular importance when wetlands are considered. Wetlands play a major role to enhance supporting services such as nutrient cycling and primary production, which in turn is the basis for other ecosystem services. Wetlands are very important to regulating services such as maintaining water flow and water quality by processing water and regulating water run-off, provisioning services such as providing freshwater, cultural services such as appreciating the landscape and biodiversity. Overall wetlands play a major role in the sustainability of land use from socio-economic and biodiversity conservation perspectives. The setting and function of wetlands at each site should therefore be evaluated to inform land use management.

Wetland vegetation is of significant importance for wetlands to play a role in valuable ecosystem services. Vegetation plays an important role in natural wetland ecosystems. It holds soil together and slows down the flow of water, reducing the risk of erosion and promoting sediment deposition. Plants are the source of organic material in wetland soils, and form the organic soil in peat wetlands.

Vegetation also has an impact on the quality of surface and subsurface water as it (1) provides organic soil matter required by microbes in order to assimilate nutrients and toxicants (2) provides habitat for the microbes in the soil immediately surrounding the roots, and (3) contributes through direct uptake of nutrients and toxicants and incorporation of these into plant tissues (Sieben *et al.* 2009).

### **1.3 Aims and objectives of the survey**

A survey consisting of three visits to investigate key elements of habitats on the site, relevant to the conservation of wetlands are conducted. The importance and significance of the site with special emphasis on the current status of biodiversity and ecological services of the wetland are evaluated. Literature investigations are integrated with field observations to identify potential ecological impacts that could occur as a result of the development and to make recommendations to reduce or minimise impacts, should the development be approved.

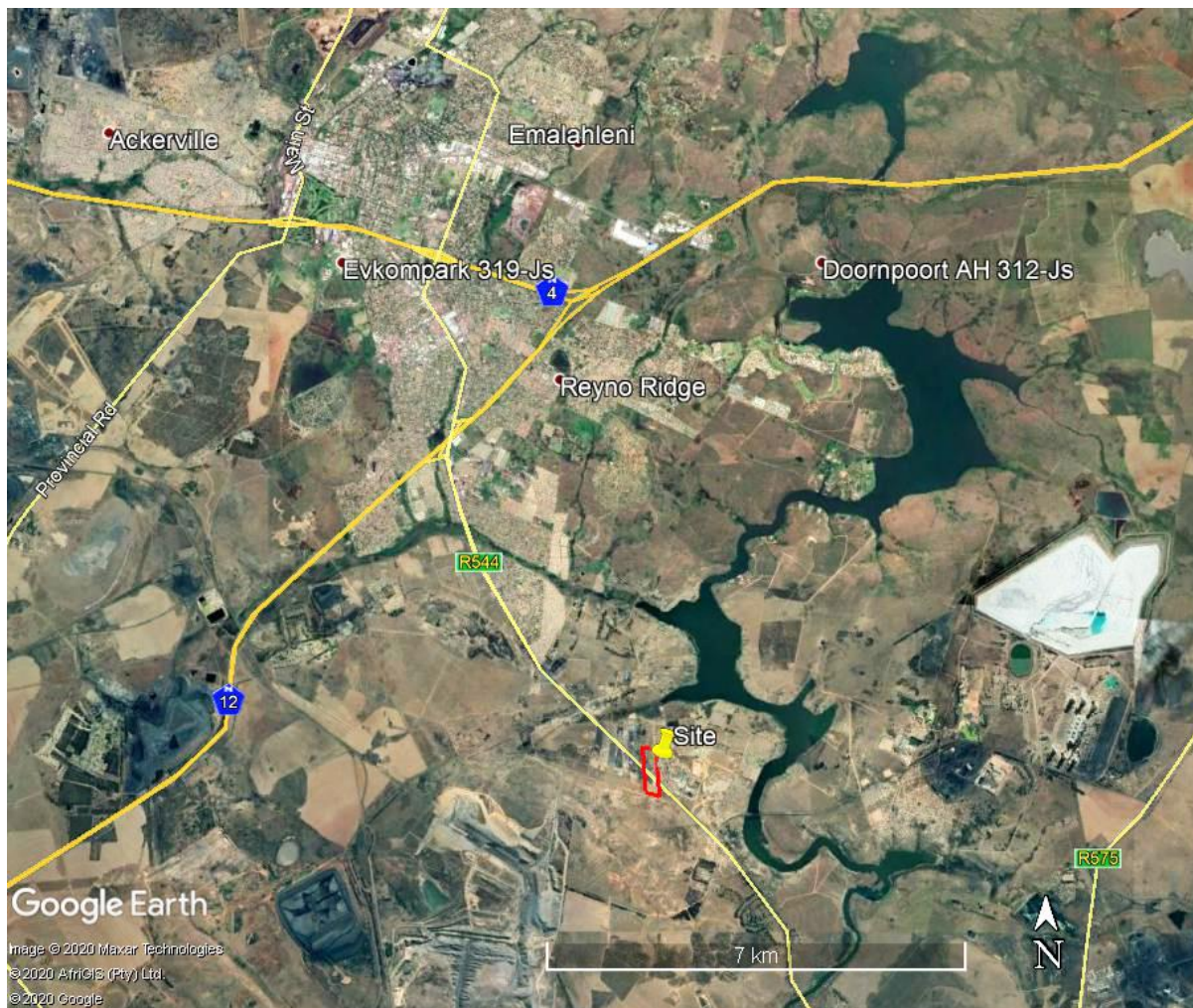
The objectives of the wetland habitat assessment are to provide:

- An indication of the existence of wetlands at the site and if so:
- An identification of major aspects of the hydro-geomorphic setting and terrain unit at which the wetland occur;
- An estimate of the size and roughness of the wetland
- An indication of the hydric soils at the site;
- An indication of erodability;
- An indication of the presence or absence of peat at the site;
- An outline of hydrological drivers that support the existence and character of the wetland;
- An assessment of the possible presence or absence of threatened or localised plant species, vertebrates and invertebrates of the region, at the site;
- A description of the functions provided by the wetland at the site;
- An interpretation of the priority of the wetland for local communities in the area;
- An interpretation of the priority of the wetland to biodiversity at the site;



## 2 STUDY AREA

The site is located north and south of the R544 road and approximately 10 km south of Emalahleni in the Mpumalanga Province. Site is located in the Grassland Biome which is represented by the Eastern Highveld Grassland vegetation type (Mucina & Rutherford 2006).



**Figure 1** Map with an indication of the location of the site.

Map information were analysed and depicted on Google images with the aid of Google Earth Pro (US Dept. of State Geographer, MapLink/ Tele Atlas, Google, 2019).

## Gm 12 Eastern Highveld Grassland

Distribution: In South Africa the Eastern Highveld Grassland (Gm 12) is found in the Mpumalanga and Gauteng Provinces: Plains between Belfast in the east and the eastern side of Johannesburg in the west and extending southwards to Bethal, Ermelo and west of Piet Retief. Altitude 1520-1780 m, but also as low as 1300 m (Mucina & Rutherford 2006).

Vegetation and landscape features: Slightly to moderately undulating plains, including some low hills and pan depressions. The vegetation is short dense grassland dominated by the usual highveld grass composition (*Aristida*, *Digitaria*, *Eragrostis*, *Themeda*, *Tristachya* etc.) with small, scattered rocky outcrops with wiry, sour grasses and some woody species (*Acacia caffra*, *Celtis africana*, *Diospyros lycioides* subsp. *lycioides*, *Parinari capensis*, *Protea caffra*, *Protea welwitschii* and *Searsia magalismsontanum*).

Geology and soils: Red and yellow sandy soils found on shales and sandstones of the Madzaringwe Formation (Karoo Supergroup) (Mucina & Rutherford 2006).

Climate: Climate is characterized by strongly seasonal summer-rainfall, with very dry winters. Mean annual precipitation is 650 - 900 mm, (overall average 726 mm). Incidence of frost from 13 – 42 days, but higher at higher elevations (Mucina & Rutherford 2006).

Important taxa of the Eastern Highveld Grassland listed by Mucina & Rutherford (2006):  
Graminoids: *Aristida aequiglumis*, *Aristida congesta*, *Aristida junciformis* subsp. *galpinii*, *Brachiaria serrata*, *Cynodon dactylon*, *Digitaria monodactyla*, *Digitaria tricholaenoides*, *Elionurus muticus*, *Eragrostis chloromelas*, *Eragrostis curvula*, *Eragrostis plana*, *Eragrostis racemosa*, *Eragrostis sclerantha*, *Heteropogon contortus*, *Loudetia simplex*, *Microchloa caffra*, *Monocymbium cerasiiforme*, *Setaria sphacelata*, *Sporobolus africanus*, *Sporobolus pectinatus*, *Themeda triandra*, *Trachypogon spicatus*, *Tristachya leucothrix*, *Tristachya rehmannii*, *Alloteropsis semialata* subsp. *eckloniana*, *Andropogon appendiculatus*, *Andropogon schirensis*, *Bewisia biflora*, *Ctenium concinnum*, *Diheteropogon amplexans*, *Eragrostis capensis*, *Eragrostis gummiflua*, *Eragrostis patentissima*, *Harpochloa falx*, *Panicum natalense*, *Rendlia altera*, *Schizachyrium sanguineum*, *Setaria nigrirostris*, *Urelytrum agropyroides*. Herbs: *Berkheya setifera*, *Haplocarpha scaposa*, *Justicia anagalloides*, *Pelargonium luridum*, *Acalypha angustata*, *Chamaecrista mimosoides*, *Dicoma anomala*, *Euryops gilfillanii*, *Euryops transvaalensis* subsp. *setilobus*, *Helichrysum aureonitens*, *Helichrysum caespitium*, *Helichrysum callicomum*, *Helichrysum oreophilum*, *Helichrysum rugulosum*, *Ipomoea crassipes*, *Pentanisia prunelloides* subsp. *latifolia*, *Selago*

*densiflora*, *Senecio coronatus*, *Vernonia oligocephala*, *Wahlenbergia undulata*. Geophytic Herbs: *Gladiolus crassifolius*, *Haemanthus humilus* subsp. *hirsutus*, *Hypoxis rigidula* var. *pilosissima*, *Ledebouria ovatifolia*. Succulent Herb: *Aloe ecklonis*. Low Shrubs: *Anthospermum rigidum* subsp. *pumilum*, *Seriphium plumosum*.

Note that many, but *not* all of the above plant species occur at the site.

### 3 METHODS

A desktop study comprised not only an initial phase, but also it was used throughout the study to accommodate and integrate all the data that became available during the field observations.

Surveys by R.F. Terblanche took place on 10,11 March 2020 to note key elements of habitats on the site, relevant to wetland indicators and the conservation of wetland fauna and flora.

Classification of any inland wetland systems that could be present at the site is according to the Classification System for Wetlands and other Aquatic Ecosystems in South Africa (Ollis *et al.*, 2013). One of the major advantages of the Classification System for South Africa (Ollis *et al.*, 2013) is that the functional aspects of wetlands are the focal point of the classification. Wetlands are very dynamic systems and their functionality weighs high against the rapid changes in their appearance (Terblanche *In prep*). In this document the main guideline for the delineation and identification of wetlands where present is the practical field procedure for identification and delineation of wetlands by DWAF (2005) and Job *et. al.* (2008).

The following sections highlight the materials and methods applicable to different aspects that were observed.

#### 3.1 Classification of wetlands (SANBI: Ollis *et al.*, 2013)

##### 3.1.1 System, regional setting and landscape unit (Levels 1, 2 and 3)

Three broad types of Inlands Systems are dealt with in the Classification System namely rivers, open waterbodies and wetlands. These Inland Systems are then classified according to a six-tiered structure that includes six levels.

At the systems level (Level 1) of wetland classification, a distinction is made between Marine, Estuarine and Inland ecosystems using the level of connectivity to the open ocean as discriminator of the biophysical character of each (Ollis *et al.*, 2013). Inland wetland systems are aquatic

ecosystems with no no existing connection to the ocean (i.e. characterised by the complete absence of marine exchange and/ or tidal influence (Ollis *et al.*, 2013). In this case if any wetland is present it obviously qualifies as an Inland wetland system.

At Level 2 the regional setting is a spatial framework that is preferred by the investigator to allow for gaining an understanding of the broad ecological context within which an aquatic system occurs (Ollis *et al.*, 2013). A regional setting can be identified according to the DWA ecoregion classification of Kleynhans *et al.* (2005).

A distinction is made between four landscape units at Level 3 of the Classification System for Inland Systems on the basis of the landscape setting (i.e. topographical position) (Ollis *et al.*, 2013). Four landscape units are recognized: slope, valley floor, plain and bench.

### 3.1.2 *Hydrogeomorphic units (Level 4)*

Seven primary hydrogeomorphic (HGM) units are recognised for Inland Systems at Level 4A of the Classification System for Wetlands and other Aquatic Ecosystems in South Africa, on the basis of hydrology and geomorphology (Ollis *et al.*, 2013). These are a River, Channeled valley-bottom wetland, Unchannelled valley-bottom wetland, Floodplain wetland, Depression, Seep and Wetland flat.

### 3.1.3 *Hydrological regime (Level 5)*

While the hydrogeomorphic unit (HGM) is influenced by the source of water and how it moves into, through and out of an Inland System, the hydrological regime (as catergorised by the Classification System) describes the behaviour fo the water within the system and, for wetlands, in the underlying soil (Ollis *et al.*, 2013). Together with the hydrogeomorphology the hydrological regime is used to describe the wetland as a functional unit (Ollis *et al.*, 2013). In the case of Inland wetlands which are classified as rivers, perennality is an important characteristic to describe the hydrological regime. For Inland Systems other than rivers, five categories relating to the frequency and duration of inundation have been provided: Permanently inundated, Seasonally inundated, Intermittently inundated, Never inundated/ rarely inundated and unknown (Ollis *et al.*, 2013). Period of saturation within the upper 0.5 m of the soil is a very important discriminator that also links to the wetland

delineation system of DWAF (2005). The following categories for saturation of wetland soils are recognised: Permanently saturated, Seasonally saturated, Intermittently saturated and unknown. These categories of period of saturation correspond to the permanent, seasonal and temporary zones of wetlands respectively.

#### 3.1.4 Wetland descriptors (Level 6)

At Level 6 several “descriptors” are included for the structural/ chemical/ biological characterisation of Inland Systems (Ollis *et al.*, 2013). These descriptors are non-hierarchical to one another and can be applied in any order depending on the purpose of a study and the availability of information. Descriptors include natural vs. artificial, salinity, substratum type, pH, geology and vegetation cover (Ollis *et al.*, 2013). Various definitions are given for the descriptors which are likely to increase the consistency and use of the system.

### 3.2 Delineation of wetland

Together with terrain unit, indirect indicators of prolonged saturation by water: wetland plants (hydrophytes) and wetland (hydromorphic) soils are identified and used to delineate the wetland (DWAF 2005). Three zones, which may not all three be present in all wetlands, namely the permanent zone of wetness, the seasonal zone and the temporary zone are identified. The temporary zone is the outer zone and is saturated for only a short period of the year that is sufficient, under normal circumstances, for the formation of hydromorphic soils and the growth of wetland vegetation (DWAF 2005). Hydromorphic soils must display signs of wetness within 50cm of the soil to qualify as wetland soil that can support hydrophytic vegetation. Grid references and altitudes are taken on site with a GPS Garmin E-trex 20 ® instrument. Map information are analysed and depicted on Google images with the aid of Google Earth Pro (US Dept. of State Geographer, MapLink/ Tele Atlas, Google, 2015).

### **3.3 Vegetation at and near wetland**

Though vegetation is a key component of the wetland definition in the Water Act, using vegetation as a primary indicator requires undisturbed conditions and expert knowledge (DWAF 2005). Modern wetland classification systems in South Africa therefore place more emphasis on the soil wetness indicators. It remains however, that plant assemblages undergo distinct changes in species composition from the centre of a wetland to the edge, and into adjacent terrestrial areas (DWAF 2005). This change in species composition of vegetation provides valuable clues for determining the wetland boundary and wetness zones (DWAF 2005).

Apart from botanical aspects which are integrated into the description of a wetland it is imperative to note the existence or not of threatened plant species or other plant species of conservation concern, such as near-threatened, data deficient or declining species at a wetland. Floristic composition is therefore also considered during the wetland assessment. Voucher specimens of plant species are only taken where the taxonomy is in doubt or where the plant specimens are of significant relevance for invertebrate conservation. Field guides such as those by Germishuizen (2003), Manning (2003), Manning (2009), Van Oudtshoorn (2012), Van Wyk (2000), Van Wyk & Malan (1998) and Van Wyk & Van Wyk (1997) were used to confirm the taxonomy of the species. Works on specific plant groups (often genera) such as those by Goldblatt (1986), Goldblatt & Manning (1998), Jacobsen (1983), McMurtry, Grobler, Grobler & Burns (2008), Smit (2008), Van Jaarsveld (2006) and Van Wyk & Smith (2003) were also consulted to confirm the identification of species. An important source of identifications of plant species for the wetland survey is Van Ginkel, Glen, Gordon-Gray, Cilliers, Muasya & Van Deventer (2011). In this case no plant specimens were needed to be collected as voucher specimens or to be send to a herbarium for identification. For the most recent treatise of scientific plant names and broad distributions, Germishuizen, Meyer & Steenkamp (2006) or Raimondo *et al.* (2009) or updated lists on SANBI websites are followed to compile the lists of species.

### **3.4 Fauna at and near wetland**

Species composition of fauna is not used in wetland characterization and assessments. However, it is important to note species that favour wetlands and especially whether threatened animal species are present at a wetland or not.

Mammals are noted as sight records by day. For the identification of species and observation of diagnostic characteristics Smithers (1986), Skinner & Chimimba (2005), Cillié, Oberprieler and Joubert (2004) and Apps (2000) are consulted. Sites are been walked, covering as many habitats as possible. Signs of the presence of mammal species, such as calls of animals, animal tracks (spoor), burrows, runways, nests and faeces are recorded. Walker (1996), Stuart & Stuart (2000) and Liebenberg (1990) are consulted for additional information and for the identification of spoor and signs. Trapping is only done if necessary. Habitat characteristics are also surveyed to note potential occurrences of mammals. Many mammals can be identified from field sightings but a number of bats, rodents and shrews can only be reliably identified in the hand, and even then, some species needs examination of skulls, or even chromosomes (Apps, 2000).

Birds are noted as sight records, mainly with the aid of binoculars (10x30). Nearby bird calls of which the observer was sure of the identity were also recorded. For practical skills of noting diagnostic characteristics, the identification of species and observation techniques Ryan (2001) is followed. For information on identification, biogeography and ecology Barnes (2000), Hockey, Dean & Ryan, P.G. (2005), Cillié, Oberprieler & Joubert (2004), Tarboton & Erasmus (1998) and Chittenden (2007) are consulted. Ringing of birds falls beyond the scope of this survey. Sites are walked, covering as many habitats as possible. Signs of the presence of bird species such as spoor and nests are additionally been recorded. Habitat characteristics are surveyed to note potential occurrences of birds.

Reptiles are noted as sight records in the field. Binoculars (10x30) can also be used for identifying reptiles of which some are wary. For practical skills of noting diagnostic characteristics, the identification of species and observation techniques, Branch (1998), Marais (2004), Alexander & Marais (2007) and Cillié, Oberprieler and Joubert (2004) are followed. Sites are walked, covering as many habitats as possible. Smaller reptiles are sometimes collected for identification, but this practice was not necessary in the case of this study. Habitat characteristics are surveyed to note potential occurrences of reptiles.

Frogs and toads are noted as sight records in the field or by their calls. For practical skills of noting diagnostic characteristics, the identification of species and observation techniques Carruthers (2001), Du Preez (1996), Conradie, Du Preez, Smith & Weldon (2006) and the recent complete guide by Du Preez & Carruthers (2009) are consulted. CD's with frog calls by Carruthers (2001)



and Du Preez & Carruthers (2009) are used to identify species by their calls when applicable. Sites are walked, covering as many habitats as possible. Smaller frogs are often collected by pitfall traps put out for epigeal invertebrates (on the soil), but this practice falls beyond the scope of this survey. Habitat characteristics are also surveyed to note potential occurrences of amphibians.

Invertebrates of which enough information is available to be integrated into an assessment, such as butterflies, are recorded as sight records, photographic records or voucher specimens. Voucher specimens are mostly taken of those species of which the taxa warrant collecting due to taxonomic difficulties or in the cases where species can look similar in the veldt. Many butterflies use only one species or a limited number of plant species as host plants for their larvae. Myrmecophilous (ant-loving) butterflies such as the *Aloeides*, *Chrysoritis*, *Erikssonia*, *Lepidochrysops* and *Orachrysops* species (Lepidoptera: Lycaenidae), which live in association with a specific ant species, require a unique ecosystem for their survival (Deutschländer & Bredenkamp, 1999; Terblanche, Morgenthal & Cilliers, 2003; Edge, Cilliers & Terblanche, 2008; Gardiner & Terblanche, 2010). Known food plants of butterflies are therefore also recorded. Other invertebrate groups such as fruit chafer beetles and mygalomorph spiders are also investigated where relevant.

### **3.5 Present Ecological Status**

Ecological status of wetlands are based on models such as the modified Habitat Integrity approach developed by Kleynhans (1996, 1999). Present ecological status PES methodology is then largely based on criteria for assessing the habitat integrity of floodplain wetlands and notes for allocating a score to attributes and rating the confidence level associated with each score (DWAF 1999). Such criteria are selected on the assumption that anthropogenic modification can generally be regarded as the primary causes of degradation of the ecological integrity of a wetland (see DWAF 1999). This is done by using Table W4-1 given by DWAF (1999):

- Score each attribute according to the guidelines provided in the footnote.
- Calculate a mean score for Table W4-1 using the individual scores for all attributes.
- Provide a confidence rating for each score according to the guidelines provided in the footnote to indicate the areas of uncertainty in the determination.

Table W4-2 provides guidelines for the determination of the Present Ecological Status Class (PESC), based on the mean score determined for Table W4-1. If any of the attributes scores < 2 (i.e., it is considered to be seriously or critically modified) this score and not the mean should be taken into consideration. This approach is based on the assumption that extensive degradation of any of the wetland attributes may determine the Present Ecological Status Category (PESC). In any case, the mean on which the assessment of the PESC is based should be regarded as a guideline and should also be tested against the opinion of local experts (DWAF 1999).

Biological integrity is not directly estimated through this approach though in some systems or parts of systems, information on biological integrity is available. In such cases, the information on biological integrity can be used as a check of the PES Category determination. The mean is used to relate the ecological state of the wetland to a particular PES Category (Table W4-2) (DWAF 1999).

### **3.6 Ecological Importance and Sensitivity**

The assessment of the ecological importance and sensitivity is according to DWAF (1999) which in turn is adapted from Kleynhans (1996) and Kelynhans (1999). "Ecological importance" of a water resource is an expression of its importance to the maintenance of ecological diversity and functioning on local and wider scales. "Ecological sensitivity" refers to the system's ability to resist disturbance and its capability to recover from disturbance once it has occurred. The Ecological Importance and sensitivity (EIS) provide a guideline for determination of the Ecological Management Class (EMC) DWAF (1999).

In the method outlined here, a series of determinants for EIS according to Table W5-1 of DWAF (1999) are assessed on a scale of 0 to 4, where 0 indicates no importance and 4 indicates very high importance. The method is used as a guideline for the professional judgement of individuals familiar with an area and its wetlands. The assessors must substantiate and document their judgement as far as possible for future reference and revision (DWAF 1999).

### **3.7 Risk Rating**

The risk matrix is based on the DWS publication: Section 21 c and 1 water use Risk Assessment Protocol and Notice 509 of 2016 (Government Gazette No. 40229: 105-133; Republic of South Africa). Risk is determined after considering all listed control and/ or mitigation measures. Borderline low/ moderate risk scores can be manually adapted downwards up to a maximum of 25 points (from a score of 80) subject to listing of additional mitigation measures considered and listed in red font. Construction is here interpreted in accordance with the definition provided in Notice 509 of 2016 (Government Gazette No. 40229, p.107) to mean “any works undertaken to initiate or establish impeding or diverting or modifying resource quality, for the first time, including vegetational removal, site preparation and ground levelling”.

### **3.8 Limitations**

Wetlands are very dynamic systems and owing to time constraints a glimpse of conditions at wetlands are taken, even though the hydrogeomorphological setting, soil wetness characteristics and established vegetation constitute some longterm features of a wetland. For each site visited, it should then be emphasized that surveys can by no means result in an exhaustive list of wetland plants and animals present on the site, because of the time constraint. The onsite wetland surveys by R.F. Terblanche were conducted in March 2020 which is an optimal time of the year to note key elements of habitats on the site, relevant to the conservation of wetlands and fauna and flora. Weather conditions during the surveys were favourable for recording fauna and flora. The focus of the survey remains a habitat survey that concentrates on the hydrogeomorphological, hydrological and additional descriptors to classify and assess the wetland.

## 4 RESULTS AND DISCUSSION



**Photo 1** View from beyond the site towards the Witbank Dam.  
Photo: R.F. Terblanche.



**Photo 2** View at the site which mainly consists of modified or disturbed terrestrial grassland.  
Photo: R.F. Terblanche

#### **4.1 Absence of wetlands at site**

An inlet of the Witbank Dam north of the site is located more than 500 m from the nearest boundary of the site.

A few narrow and shallow ditches have been dug at the site.

Wetlands that could be classified as Floodplain Wetlands, Channelled Valley-bottom Wetlands, Unchannelled Valley-bottom Wetlands, Depressions (Pans), Seeps or Wetland Flats appear to be absent at site.

## 5 CONCLUSION

- Site is characterised by ecologically disturbed terrestrial vegetation where hitherto cleared areas, areas that were cultivated in the past, a tar road, footpaths and tracks are found. Patches of secondary grassland with indigenous plant species remain in some areas. An area with with conspicuous high cover of alien invasive Australian *Acacia* trees is found in the northwestern corner of the site. *Eucalyptus* species (Gum Trees), *Pinus* species (Pines) occur at parts of the site. Numerous alien invasive weeds are present at the site (Ecological Habitat Survey Report).
- An inlet of the Witbank Dam is located more than 500 m from the nearest boundary of the site.
- Wetlands such as those that could be classified as Floodplain Wetlands, Channelled Valley-bottom Wetlands, Unchannelled Valley-bottom Wetlands, Depressions (Pans), Seeps or Wetland Flats appear to be absent at site. No rivers and riparian zones are found at the site.
- Site is situated in the Olifants Water Management Area (WMA 4). Site falls outside any FEPA (Freshwater Ecosystem Priority Area) (Nel *et al.*, 2011a, 2011b).

## 6 REFERENCES

- Alexander, G. & Marais, J. 2007. A guide to the reptiles of Southern Africa. Struik, Cape Town.
- Apps, P. 2012. Smithers' mammals of Southern Africa 4<sup>th</sup> ed: A field guide, revised and updated by Peter Apps. Struik Nature, Cape Town.
- Armstrong, A.J. 1991. On the biology of the marsh owl, and some comparisons with the grass owl. *Honeyguide* 37:148-159.
- Barnes, K.N. ed. 2000. The Eskom Red Data Book of birds of South Africa, Lesotho and Swaziland. BirdLife South Africa, Johannesburg.
- Bates, M.F., Branch, W.R., Bauer, A.M., Burger, M., Marais, J., Alexander, G.J. & De Villiers, M.S. (eds). 2014. Atlas and Red List of the Reptiles of South Africa, Lesotho and Swaziland. *Suricata* 1. South African National Biodiversity Institute, Pretoria.
- Boon, R. 2010. *Pooley's trees of eastern South Africa: a complete guide 2<sup>nd</sup> ed.* Flora and Fauna Publications Trust, Durban.
- Branch, B. 1998. Field guide to snakes and other reptiles of southern Africa. 3<sup>rd</sup> ed. Struik, Cape Town.
- Branch, B. 2008. Tortoises, Terrapins & Turtles of Africa. Struik Nature, Cape Town.
- Branch, W.R. & Patterson, R.W. 1975. Notes on the ecology of the Giant Girdled Lizard, *Cordylus giganteus*. *Journal of Herpetology* 9(4): 364-366.
- Branch, W.R., Tolley, K.A., Cunningham, M., Bauer, A.M., Alexander, G., Harrison, J.A., Turner, A.A. & Bates, M.F. eds. 2006. A plan for phylogenetic studies of southern African reptiles: proceedings of a workshop held at Kirstenbosch, February 2006. Biodiversity Series 5. South African National Biodiversity Institute, Pretoria.

- Bronner, G. 2011. *Mammals*. In: Picker, M. & Griffiths, C. 2011. *Alien & Invasive animals: a South African perspective*. Struik Nature, Cape Town, p 22-35.
- Bromilow, C. 2010. Problem plants and alien weeds of South Africa. Briza Publications, Pretoria.
- Carruthers, V. & Du Preez, 2011. *Frogs and frogging in southern Africa* 2<sup>nd</sup> ed. Struik, Cape Town.
- Chittenden, H. 2007. *Roberts Bird Guide*. John Voelcker Book Fund, Cape Town.
- Cillié, B., Oberprieler, U. & Joubert, C. 2004. *Animals of Pilanesberg: an identification guide*. Game Parks Publishing, Pretoria.
- Cilliers, S.S., Müller, N. & Drewes, E. 2004. Overview on urban nature conservation: situation in the western-grassland biome of South Africa. *Urban forestry and urban greening* 3: 49-62.
- Coetzee, N. & Monadjem, A. 2008. *Mystromys albicaudatus*. In: IUCN 2012. IUCN Red List of Threatened Species. Version 2012.2. <[www.iucnredlist.org](http://www.iucnredlist.org)>.
- Conradie, W., Du Preez, L.H., Smith, K. & Weldon, C. 2006. *Field guide to the frogs and toads of the Vredefort Dome World Heritage Site*. School of Environmental Sciences and Development, Potchefstroom.
- Court, D. 2010. *Succulent Flora of Southern Africa*. Struik Nature, Cape Town.
- Crouch, N.R., Klopper, R.R., Burrows, J.E. & Burrows, S.M. 2011. *Ferns of Southern Africa: a comprehensive guide*. Struik Nature, Cape Town.
- Deuschländer, M.S. & Bredenkamp, C.J. 1999. Importance of vegetation analysis in the conservation management of the endangered butterfly *Aloeides dentatis* subsp. *dentatis* (Swierstra) (Lepidoptera: Lycaenidae). *Koedoe* 42(2): 1-12.



- Dippenaar-Schoeman, A.S. 2002. Baboon and trapdoor spiders in southern Africa: an identification manual. Plant Protection Research Institute Handbook No. 13. Agricultural Research Council, Pretoria.
- Dippenaar-Schoeman, A.S. & Jocqué, R. 1997. African spiders: an identification manual. Plant Protection Research Institute Handbook No. 9. Agricultural Research Council, Pretoria.
- Du Preez, L.H. 1996. Field guide and key to the frogs and toads of the Free State. Department of Zoology and Entomology, University of the Orange Free State, Bloemfontein.
- Du Preez, L.H. & Carruthers, V. 2009. A complete guide to the frogs of southern Africa. Struik Nature, Cape Town. CD with calls included.
- DWAF (Department of Water Affairs and Forestry). 1997. South African Water Quality Guidelines for Aquatic Ecosystems.
- DWAF (Department of Water Affairs and Forestry). 1999. Resource Directed Measures for Protection of Water Resources: Wetland Ecosystems: W4. Department of Water Affairs and Forestry, Pretoria.
- DWAF (Department of Water Affairs and Forestry). 2005. A practical field procedure for identification and delineation of wetland and riparian areas. DWAF, Pretoria.
- Ellery, W., Grenfell, M., Grenfell, S., Kotze, D., McCarthy, T., Tooth, S., Grundling, P-L., Beckedahl, H., Le Maitre, D. & Ramsay, L. 2009. WET-origins: controls on the distribution and dynamics of wetlands in South Africa.
- Germishuizen, G. 2003. Illustrated guide to the wildflowers of northern South Africa. Briza, Pretoria.
- Goldblatt, P. 1986. The *Moraeas* of Southern Africa. Annals of Kirstenbosch Botanic Gardens, Volume 14. National Botanic Gardens, Cape Town.
- Goldblatt, P. & Manning, J. 1998. *Gladiolus* in Southern Africa.

- Henderson, L. 2001. *Alien weeds and alien invasive plants: a complete guide to the declared weeds and invaders in South Africa*. Plant Protection Research Institute Handbook No. 12. ARC: Plant Protection Research Institute, Pretoria.
- Henderson, L. & Cilliers, C.J. 2002. *Invasive aquatic plants: a guide to the identification of the most important and potentially dangerous invasive aquatic and wetland plants in South Africa*. Plant Protection Research Handbook No. 16. Agricultural Research Council, Pretoria.
- Henning, G.A., Terblanche, R.F. & Ball, J.B. (eds) 2009. South African Red Data Book: butterflies. *SANBI Biodiversity Series No 13*. South African National Biodiversity Institute, Pretoria.
- Henning, S.F. 1983. Biological groups within the Lycaenidae (Lepidoptera). *Journal of the Entomological Society of Southern Africa* 46(1): 65-85.
- Henning, S.F. 1987. Outline of Lepidoptera conservation with special reference to ant associated Lycaenidae. *Proceedings of the first Lepidoptera conservation Symposium, Roodepoort: Lepidopterists' Society of southern Africa*: 5-7.
- Henning, S.F. & Henning, G.A. 1989. South African Red Data Book: butterflies. *South African National Scientific Programmes Report No. 158*. CSIR, Pretoria.
- Hockey, P. 2011. *Birds*. In: Picker, M. & Griffiths, C. 2011. *Alien & Invasive animals: a South African perspective*. Struik Nature, Cape Town, p 36-44.
- Hockey, P.A.R., Dean, W.J.R. & Ryan, P.G. (eds.). 2005. *Roberts Birds of Southern Africa*. John Voelcker Bird Book Fund, Cape Town.
- Holm, E. & Marais, E. 1992. *Fruit chafers of southern Africa*. Ekogilde, Hartebeespoort.
- Impson, D. & Swartz, E. 2007. *Labeobarbus kimberleyensis*. The IUCN Red List of Threatened Species. 2007: e. 63292A12638641. <http://dx.doi.org/10.2305/IUCN.UK.2007.RLTS.T63292A12638641.en>. Downloaded on 26 April 2017.

IUCN. 2001. *IUCN Red List Categories and Criteria: Version 3.1*. IUCN Species Survival Commission. IUCN, Gland, Switzerland and Cambridge, UK.

IUCN. 2012. IUCN Red list of Threatened Species. Version 2012.1).

Job, N., Nbona, N., Dayaram, A. & Kotze, D. 2018. Guidelines for mapping wetlands in South Africa. SANBI Biodiversity Series 28. South African National Biodiversity Institute, Pretoria.

Kemper, N.P. 2001. RVI: Riparian Vegetation Index, final report, WRC Report No. 850/3/1. Institute for Water Research, Pretoria.

Kleynhans, C.J. 1999. A procedure for the determination of the ecological reserve for the purposes of the national water balance model for South African River. Institute of Water Quality Studies, Department of Water Affairs & Forestry, Pretoria.

Kleynhans, C.J., Thirion, C. & Moolman, J. 2005. A level 1 ecoregion classification system for South Africa, Lesotho and Swaziland. Report No. N/0000/00/REQ0104. Resource Quality Services, Department of Water Affairs and Forestry, Pretoria.

Kotze, D., Marneweck, G., Batchelor, A., Lindley, D. and Collins, N. 2008. WET-EcoServices: A technique for rapidly assessing ecosystem services supplied by wetlands. Wetland Management Series. Water Research Commission Report TT339/08, Water Research Commission, Pretoria.

Liebenberg, L. 1990. A field guide to the animal tracks of Southern Africa. David Philip Publishers, Cape Town.

Leeming, J. 2003. Scorpions of southern Africa. Struik, Cape Town.

Leroy, A. & Leroy, J. 2003. Spiders of southern Africa. Struik, Cape Town.

Low, A.B. & Rebelo, A.G. (Eds.) 1996. Vegetation of South Africa, Lesotho and Swaziland. Department of Environmental Affairs and Tourism, Pretoria.

Manning, J. 2003. Photographic guide to the wild flowers of South Africa. Briza, Pretoria.

- Manning, J. 2009. Field guide to the wild flowers of South Africa. Struik, Cape Town.
- Marneweck, G.C. & Batchelor, A. 2002. Wetland inventory and classification. In: Ecological and economic evaluation of wetlands in the upper Olifants River catchment. Palmer, R.W., Turpie, J., Marneweck, G.C. and Batchelor, A. (eds). Water Research Commission Report No. 1162/02.
- McMurtry, D., Grobler, L., Grobler, J. & Burns, S. 2008. Field guide to the orchids of northern South Africa and Swaziland. Umdaus Press, Hatfield.
- Mecenero, S., Ball, J.B., Edge, D.A., Hamer, M.L., Henning, G.A., Krüger, M, Pringle, E.L., Terblanche, R.F. & Williams, M.C. 2013. *Conservation Assessment of Butterflies of South Africa, Lesotho and Swaziland: Red List and Atlas*. Saftronics, Johannesburg & Animal Demography Unit, Cape Town.
- Minter, L.R., Burger, M., Harrison, J.A., Braack, H.H., Bishop, P.J. & Kloepfer, D. eds. 2004. Atlas and Red Data Book of the Frogs of South Africa, Lesotho and Swaziland. SI/MAB series 9, Smithsonian Institution, Washington DC.
- Mucina, L. & Rutherford, M.C. eds. 2006. The vegetation of South Africa, Lesotho and Swaziland. Strelitzia 19. Pretoria: South African National Biodiversity Institute.
- Mucina, L., Rutherford, M.C., and Powrie, L.W. eds. 2005. Vegetation map of South Africa, Lesotho and Swaziland, 1:1 000 000 scale sheet maps. Pretoria: South African National Biodiversity Institute.
- Nel, J.L., Driver, A., Strydom, W.F., Maherry, A.M., Petersen, C.P., Hill, L., Roux, D.J., Nienaber, S., Van Deventer, H., Swartz, E.R. & Smith-Adao, L.B. 2011. Atlas of Freshwater Ecosystem Priority Areas in South Africa: Maps to support sustainable development of water resources. WRC Report No. TT 500/11. Water Research Commission, Pretoria.
- Nel, J.L., Murray, K.M., Maherry, A.M., Petersen, C.P., Roux, D.J., Driver, A., Hill, L., Van Deventer, H., Funke, N., Swartz, E.R., Smith-Adao, L.B., Mbona, N., Downsborough, L. & Nienaber, S.

2011. Technical Report for the Freshwater Ecosystem Priority Areas Project. WRC Report No. TT 1801/2/11. Water Research Commission, Pretoria.
- New, T.R. 1993. *ed.* Conservation biology of *Lycaenidae* (butterflies). *Occasional paper of the IUCN Species Survival Commission* No. 8.
- New, T.R. 1995. Butterfly conservation in Australasia – an emerging awareness and an increasing need. (*In* Pullin, A.S. *ed.* Ecology and conservation of butterflies. London: Chapman & Hall. p. 304 – 315.)
- Ollis, D.J., Snaddon, C.D., Job, N.M. & Mbona, N. 2013. Classification System for Wetlands and other Aquatic Ecosystems in South Africa. User Manual: Inland Systems. *SANBI Biodiversity Series 22*. South African National Biodiversity Institute, Pretoria.
- Peacock, F. 2006. Pipits of Southern Africa. Published by the author, Pretoria. [www.pipits.co.za](http://www.pipits.co.za).
- Pfab, M.F. 2002. Priority ranking scheme for Red Data plants in Gauteng, South Africa. *South African Journal of Botany* (68): 299-303.
- Pfab, M.F. & Victor, J.E. 2002. Threatened plants of Gauteng, South Africa. *South African Journal of Botany* (68): 370-375.
- Picker, M. & Griffiths, C. 2011. Alien & Invasive animals: a South African perspective. Struik Nature, Cape Town.
- Picker, M., Griffiths, C. & Weaving, A. 2004. Field guide to insects of South Africa. 2<sup>nd</sup> ed. Cape Town: Struik.
- Pooley, E. 1998. A field guide to wild flowers of KwaZulu-Natal and the eastern region. Natal Flora Publications Trust, Durban.
- Rautenbach, I.L. 1982. The mammals of the Transvaal. *Ecoplan monograph 1*: 1-211.

- Retief, E. & Herman, P.P.J. 1997. Plants of the northern provinces of South Africa: keys and diagnostic characteristics. *Strelitzia* 6. National Botanical Institute, Pretoria.
- Rutherford, M.C. & Westfall, R.H. 1994. Biomes of southern Africa: An objective categorisation, 2<sup>nd</sup> ed. *Memoirs of the Botanical Survey of South Africa*, Vol. 63, pp. 1-94. National Botanical Institute, Pretoria.
- Ryan, P. 2001. *Practical Birding: A guide to birdwatching in southern Africa*. Struik, Cape Town.
- Samways, M.J. 2005. *Insect diversity conservation*. Cambridge University Press, Cambridge.
- Sieben, E.E., Kotze, D.C., Ellery, W.N. & Russell, W.B. 2009. Chapter 6: Using vegetation in wetland rehabilitation. In: Russel, W. 2009. *WET-RehabMethods: National guidelines and methods for wetland rehabilitation*. WRC Report TT 341/09, Water Research Commission, Pretoria, pp. 54-94.
- Skelton, P. 2001. *A complete guide to the freshwater fishes of Southern Africa*. Struik, Cape Town.
- Skelton, P. & Weyl, O. 2011. *Fishes*. In: Picker, M. & Griffiths, C. 2011. *Alien & Invasive animals: a South African perspective*. Struik Nature, Cape Town, p 36-44.
- Skinner, J.D. & Chimimba, C.T. 2005. *The mammals of the southern African subregion*. Cambridge University Press, Cape Town.
- South Africa. 2004. *National Environmental Management: Biodiversity Act No. 10 of 2004*. Government Printer, Pretoria.
- Stuart, C. & Stuart, T. 2006. *Field guide to the larger mammals of Africa* 3<sup>rd</sup> ed. Struik Nature, Cape Town.
- Stuart, C. & Stuart, T. 2013. *A field guide to the tracks and signs of Southern, Central and East African wildlife* 4<sup>th</sup> ed. Struik Nature, Cape Town.
- Tarboton, W. & Erasmus, R. 1998. *Owls and owling in southern Africa*. Struik, Cape Town.

- Taylor, J.C., Janse Van Vuuren, M.S. & Pieterse, A.J.H. 2007. The application and testing of diatom-based indices in the Vaal and Wilge Rivers, South Africa. *Water SA* 33(1): 51-59.
- Terblanche, R.F. & Edge, D.A. 2007. The first record of an *Orachrysops* in Gauteng. *Metamorphosis* 18(4): 131-141.
- Van Ginkel, C.E., Glen, R.P., Gordon-Gray, K.D., Cilliers, C.J., Muasya, M. & van Deventer, P.P. 2011. Easy identification of some South African Wetland Plants. WRC Report No TT 479/10. Water Research Commission, Gezina.
- Van Jaarsveld, E.J. 2006. The Southern African *Plectranthus* and the art of turning shade to glade.
- Van Oudtshoorn, F. 2012. Guide to grasses of southern Africa, 3<sup>rd</sup> ed. Briza, Pretoria.
- Van Wyk, B. 2000. A photographic guide to wild flowers of South Africa. Struik, Cape Town.
- Van Wyk, B. & Malan, S. 1998. Field Guide to the Wild Flowers of the Highveld. Struik, Cape Town.
- Van Wyk, A.E. & Smith, G.F. 2001. Regions of floristic endemism in Southern Africa: a review with emphasis on succulents, Umdaus Press, Pretoria.
- Van Wyk, B.E. & Smith, G.F. 2003. Guide to the aloes of South Africa, 2<sup>nd</sup> ed. Briza, Pretoria.
- Van Wyk, B. & Van Wyk, P. 2013. Field guide to trees of southern Africa, 2<sup>nd</sup> ed. Struik, Cape Town.
- Walker, C. 1996. Signs of the Wild. 5<sup>th</sup> ed. Struik, Cape Town.