

Mafube Roads Project: Vegetation and Terrestrial Ecosystems

29°45'0"E

29°46'0"E

29°47'0"E

29°48'0"E

25°46'0"S

25°46'0"S

25°47'0"S

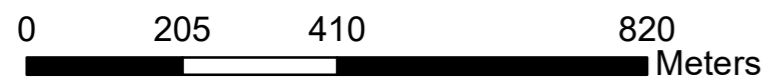
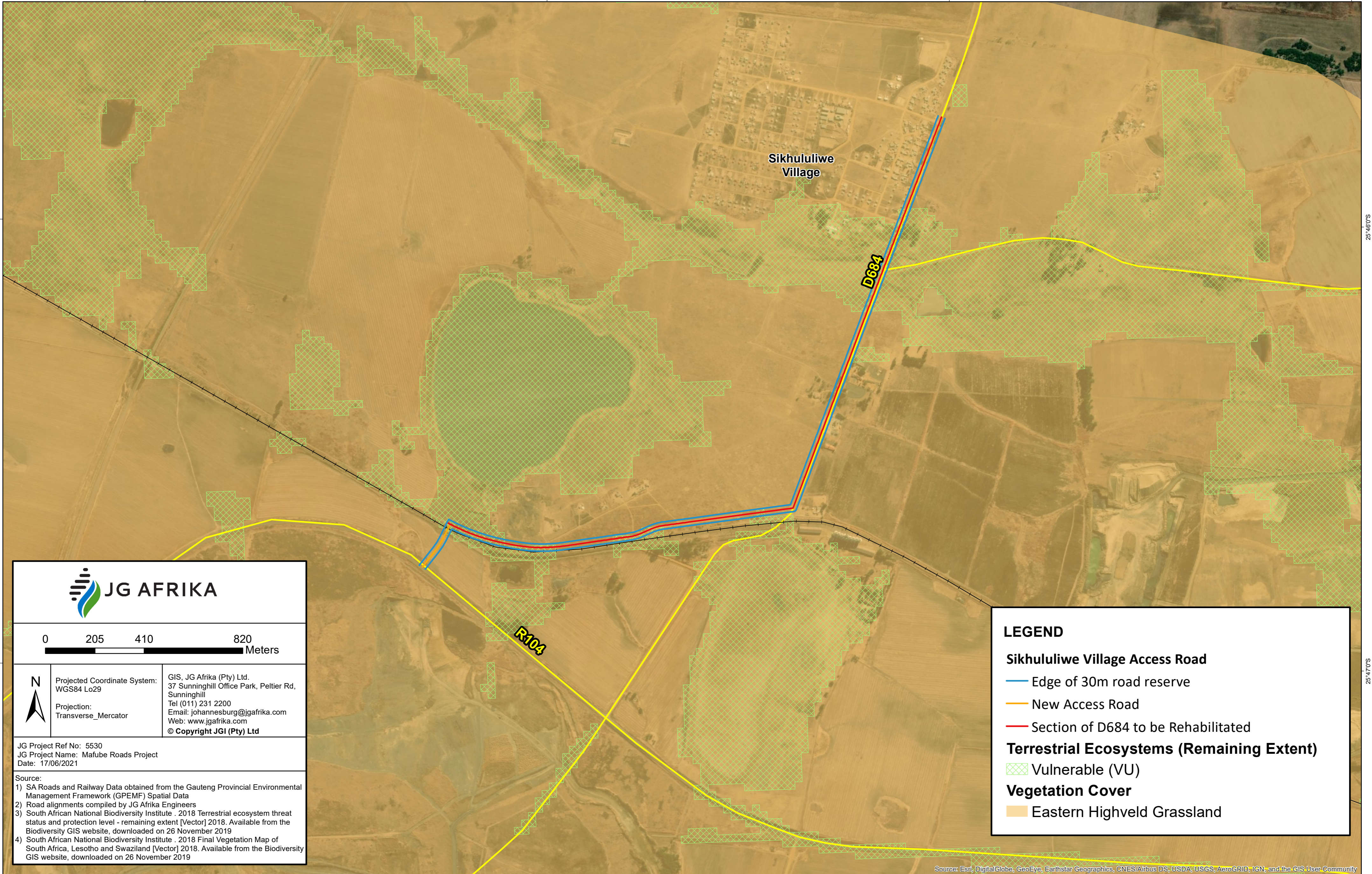
25°47'0"S

29°45'0"E

29°46'0"E

29°47'0"E

29°48'0"E



Projected Coordinate System:
WGS84 Lo29

Projection:
Transverse_Mercator

GIS, JG Afrika (Pty) Ltd.
37 Sunninghill Office Park, Pettier Rd,
Sunninghill
Tel (011) 231 2200
Email: johannesburg@jgafrika.com
Web: www.jgafrika.com
© Copyright JGI (Pty) Ltd

JG Project Ref No: 5530
JG Project Name: Mafube Roads Project
Date: 17/06/2021

- Source:
- 1) SA Roads and Railway Data obtained from the Gauteng Provincial Environmental Management Framework (GPEMF) Spatial Data
 - 2) Road alignments compiled by JG Afrika Engineers
 - 3) South African National Biodiversity Institute . 2018 Terrestrial ecosystem threat status and protection level - remaining extent [Vector] 2018. Available from the Biodiversity GIS website, downloaded on 26 November 2019
 - 4) South African National Biodiversity Institute . 2018 Final Vegetation Map of South Africa, Lesotho and Swaziland [Vector] 2018. Available from the Biodiversity GIS website, downloaded on 26 November 2019

LEGEND

Sikhululiwe Village Access Road

— Edge of 30m road reserve

— New Access Road

— Section of D684 to be Rehabilitated

Terrestrial Ecosystems (Remaining Extent)

▨ Vulnerable (VU)

Vegetation Cover

■ Eastern Highveld Grassland

Source: Esri, DigitalGlobe, GeoEye, Earthstar Geographics, CNES/Airbus DS, USDA, USGS, AeroGRID, IGN, and the GIS User Community