

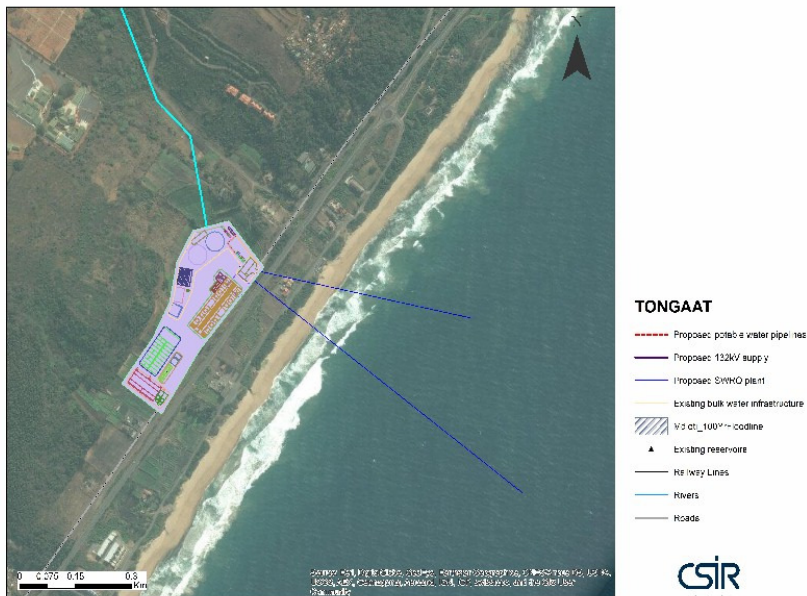
# DESK-TOP PALAEOLOGY ASSESSMENT: TONGAAT

*Alan Smith Pr. Sci. Nat. (11/11/2015)*

## TERMS OF REFERENCE

Provide a Desk-top Palaeontological Assessment for the proposed Tongaat Desalination site. The geology was obtained from the 1:250 000 Geological Map (Thomas, 1988).

Fig. 1: Proposed Tongaat desalination site.



Three lithologies crop out, or are anticipated to be at shallow depth, in the proposed Tongaat desalination site:

1. Berea Formation: According to the 1:2500 geological map, this site is entirely Berea Formation (Qb), which is not consolidated. Although it is described as Berea Formation it probably contains dunes of various Quaternary ages. No palaeontology reports are known from this location.
2. Dolerite: May be present as sills or dykes at depth. This rock is igneous and NOT FOSSILIFEROUS.
3. Vryheid Formation underlies the Quaternary at shallow depth and may crop out on the beach from time to time (depending on coastal erosion). This rock is rich in trace fossils but it is extremely common in KwaZulu-Natal and has no scarcity value.

## CONCLUSION: NOTHING OF PALAEOLOGICAL SIGNIFICANCE FROM DESK-TOP STUDY

## REFERENCES

Thomas, RJ (1988). 2930 DURBAN 125 000 geological map. Council for Geosciences, Government Printer, Pretoria.

GoogleEarth website