

# Transalloys Coal-Fired Power Station, Mpumalanga Province

## Sensitivity and Layout Map

### Legend

- Existing Substation
- Main Road
- Perennial River
- Existing Power Line
- 33kV Powerline

### Layout

- Updated Ash Yard
- Updated Power Plant Layout

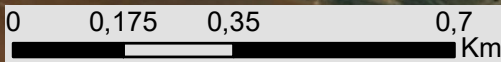
### Environmental Sensitivities

- ▲ NSD
- ★ Heritage Sites: Stone Cairns
- ★ Heritage Sites: Ruins
- ▨ Heritage Site Extent
- NFEPA Wetlands
- ▨ Visual (High Sensitivity)

### Surface Water Sensitivities

- Channelled Valley Bottom Wetland 1
- Channelled Valley Bottom Wetland 2
- Hillslope Seep Wetland

Scale: 1:12 000  
 Projection: LO29 WGS 1984  
 Map ref: Transalloys Sensitivity Map 2.07.2020



# CADASTRAL PLAN OF TRANSALLOYS PROPERTIES

Showing properties and servitudes as defined on approved Surveyor General Diagrams.

Plan must be read in conjunction with Title Deed T9949/2008

The Figure A, B, C, D, E, F, G, H, J, K, A Represents:

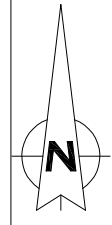
The remaining extent of portion 20 of the farm Schoongezicht 308 JS

The remaining extent of portion 24 of the farm Schoongezicht 308 JS

The remaining extent of portion 34 of the farm Elandsfontein 309 JS

Portion 35 of the farm Elandsfontein 309 JS

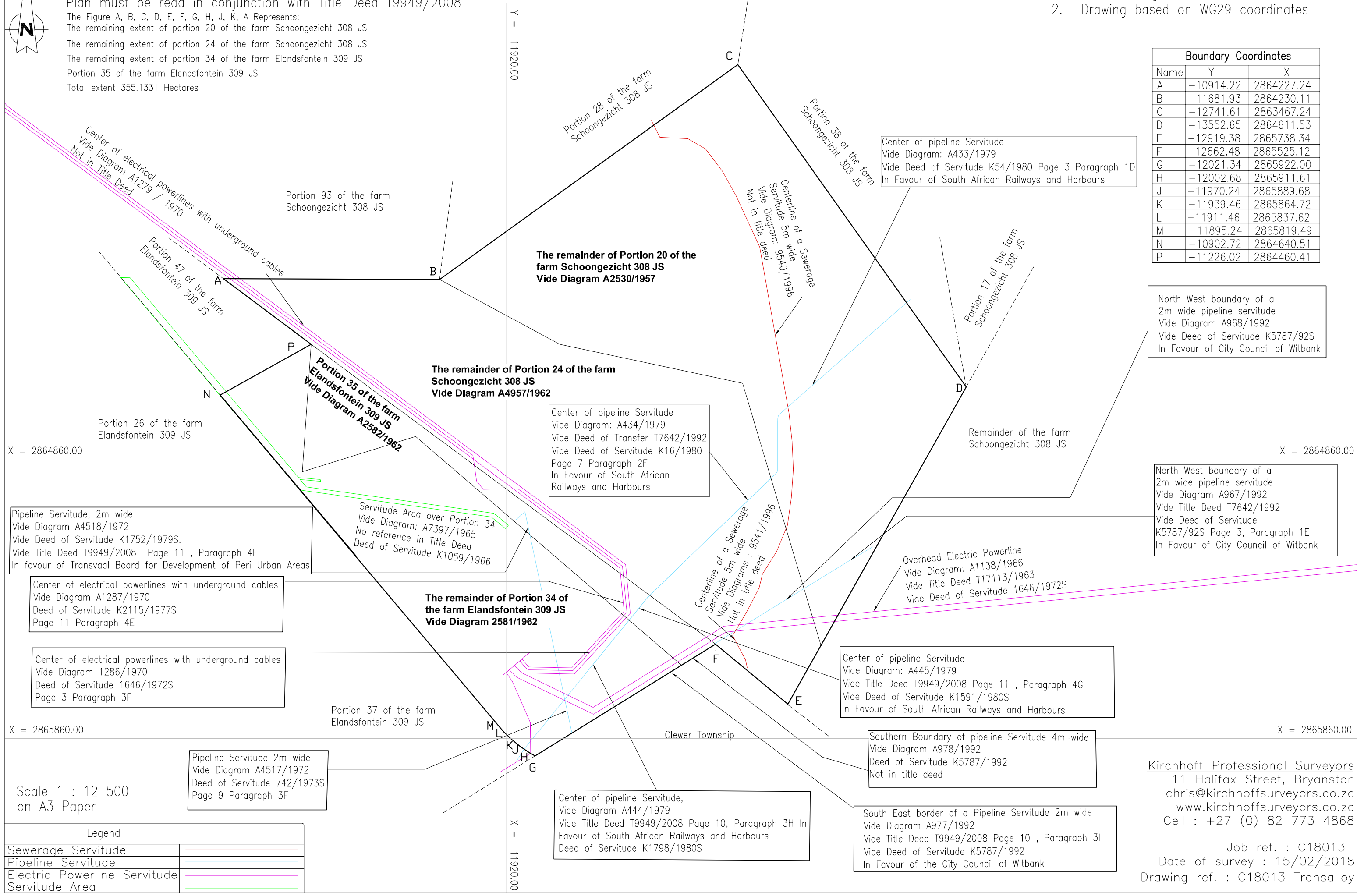
Total extent 355.1331 Hectares



Notes:

- Information based on available Survey General Diagrams
- Drawing based on WG29 coordinates

Boundary Coordinates		
Name	Y	X
A	-10914.22	2864227.24
B	-11681.93	2864230.11
C	-12741.61	2863467.24
D	-13552.65	2864611.53
E	-12919.38	2865738.34
F	-12662.48	2865525.12
G	-12021.34	2865922.00
H	-12002.68	2865911.61
J	-11970.24	2865889.68
K	-11939.46	2865864.72
L	-11911.46	2865837.62
M	-11895.24	2865819.49
N	-10902.72	2864640.51
P	-11226.02	2864460.41



X = 2864860.00

X = 2864860.00

X = 2865860.00

X = 2865860.00

Y = -11920.00

X = -11920.00

Legend	
Sewerage Servitude	
Pipeline Servitude	
Electric Powerline Servitude	
Servitude Area	

Scale 1 : 12 500  
on A3 Paper

Kirchhoff Professional Surveyors  
11 Halifax Street, Bryanston  
chris@kirchhoffsurveyors.co.za  
www.kirchhoffsurveyors.co.za  
Cell : +27 (0) 82 773 4868

Job ref. : C18013  
Date of survey : 15/02/2018  
Drawing ref. : C18013 Transalloy